

Record of Survey - ML 564754

Survey Number ML 564754
Surveyor Reference 210268 37 Owhata Road
Surveyor Nicholas Gordon Davies
Survey Firm Cheal Consultants Limited
Surveyor Declaration I Nicholas Gordon Davies, being a licensed cadastral surveyor, certify that--
 (a) this dataset provided by me and its related survey are accurate, correct and in accordance with the Cadastral Survey Act 2002 and Cadastral Survey Rules 2021; and
 (b) the survey was undertaken by me or under my personal direction.
 Declared on 10 Oct 2022 05:16 PM

Survey Details

Dataset Description	Partition of Owhata 1D2 Block		
Purpose	Partition		
Status	Approved by Maori Land Court	Type	Survey
Land District	South Auckland	Survey Class	Class A
Meridional Circuit	Bay of Plenty 2000	Vertical Datum	None

Survey Dates

Surveyed Date	07/07/2021	Certified Date	10/10/2022
Submitted Date	10/10/2022 17:16:30	Survey Approval Date	17/10/2022
Deposit Date			

Referenced Surveys

Survey Number	Land District	Bearing Correction
ML 13312	South Auckland	0°00'00"
ML 18192	South Auckland	0°00'00"
ML 19781	South Auckland	0°00'00"
ML 20909	South Auckland	0°00'00"
ML 21508	South Auckland	0°00'00"
SO 51701	South Auckland	0°00'00"
ML 19102	South Auckland	0°00'00"
SO 60785	South Auckland	0°00'00"
SO 60879	South Auckland	0°00'00"
SO 315597	South Auckland	0°00'00"

Territorial Authorities

Rotorua District

Comprised In

RT SA32B/482

Created Parcels

Parcels	Parcel Intent	Area	RT Reference
Area C Maori Land Plan 564754	Easement		
Area D Maori Land Plan 564754	Easement		



Record of Survey - ML 564754

Created Parcels

Parcels	Parcel Intent	Area	RT Reference
Owhata 1D2A Block Maori Land Plan 564754	Maori	0.0987 Ha	1106865
Owhata 1D2B Block Maori Land Plan 564754	Maori	0.2605 Ha	1106866
Owhata 1D2C Block Maori Land Plan 564754	Maori	0.1796 Ha	1106867
Owhata 1D2D Block Maori Land Plan 564754	Maori	0.1796 Ha	1106868
Area A Maori Land Plan 564754	Easement		
Area B Maori Land Plan 564754	Easement		
Total Area		<hr/> 0.7184 Ha	

Mark and Vector

Survey Number ML 564754

Meridional Circuit Bay of Plenty 2000

From	To	Code	Bearing	Adpt Surv	Bearing Correction	Distance	Adpt Surv	Class
IS V SO 60785	IB IV ML 21508	ob0	335°22'20"	A SO 315597	0°00'00"	201.24 A	SO 315597	
IB IV ML 21508	RUM IX SO 51701	ob4	151°55'20"	A SO 315597	0°00'00"	201.34 A	SO 315597	
RUM IX SO 51701	IS V SO 60785	ob6	244°05'00"	A SO 315597	0°00'00"	12.12 A	SO 315597	
IS V SO 60785	BS SO 60879	ob1	335°10'00"	M		359.36 M		
BS SO 60879	IT ML 19102	ob12	168°36'00"	A SO 60879	0°00'00"	5.22 A	SO 60879	
IT ML 19102	IT III ML 18192	ob14	154°26'00"	A ML 21508	0°00'00"	80.19 A	ML 21508	
IT III ML 18192	PEG B ML 13312	ob15	154°26'00"	A ML 21508	0°00'00"	5.01 A	ML 19102	
PEG B ML 13312	IB IV ML 21508	ob18	154°27'30"	A ML 21508	0°00'00"	67.85 A	ML 21508	
IS V SO 60785	IB 5 ML 564754	ob2	334°36'30"	M		149.36 M		
IB 5 ML 564754	IB 2 ML 564754	ob45	334°36'30"	M		46.42 M		
IB 2 ML 564754	IB 1 ML 564754	ob35	334°36'30"	M		31.86 M		
IB 1 ML 564754	BS SO 60879	ob31	336°07'50"	M		131.75 M		
IB 1 ML 564754	IB 4 ML 564754	ob32	98°10'00"	M		49.39 M		
IB 4 ML 564754	IB 2 ML 564754	ob38	238°17'20"	M		41.41 M		
IB IV ML 21508	IS II ML 18192	ob5	154°26'00"	A ML 18192	0°00'00"	69.53 A	ML 18192	
IS II ML 18192	PEG E ML 564754	ob7	68°55'00"	A ML 18192	0°00'00"	10.09 A	ML 18192	
PEG E ML 564754	UNMK 20 ML 564754	ob8	334°26'00"	A ML 18192	0°00'00"	33.71 C		Class A
UNMK 20 ML 564754	PEG F ML 564754	ob51	334°26'00"	A ML 18192	0°00'00"	3.25 C		Class A
PEG F ML 564754	UNMK 22 ML 564754	ob19	334°26'00"	A ML 18192	0°00'00"	3.25 C		Class A
UNMK 22 ML 564754	UNMK 26 ML 564754	ob53	334°26'00"	A ML 18192	0°00'00"	35.59 C		Class A
UNMK 25 ML 564754	PEG G ML 564754	ob59	334°26'00"	A ML 18192	0°00'00"	47.39 C		Class A
PEG G ML 564754	PEG B ML 13312	ob9	294°20'00"	A ML 18192	0°00'00"	15.61 A	ML 18192	
IS V SO 60785	IT IV SO 60785	ob3	22°41'20"	M		307.88 M		
IT IV SO 60785	IT IXA SO 51701	ob13	118°51'00"	A SO 60785	0°00'00"	8.33 A	SO 60785	
IT IXA SO 51701	IT SO 51701	ob16	204°38'10"	A SO 51701	0°00'00"	131.27 A	SO 51701	
IT SO 51701	RUM IX SO 51701	ob17	201°14'30"	A SO 51701	0°00'00"	166.79 A	SO 51701	
PEG G ML 564754	PEG M ML 564754	ob10	114°20'00"	A ML 19781	0°00'00"	56.58 C		Class A
PEG M ML 564754	PEG (1) ML 18192	ob23	114°20'00"	A ML 19781	0°00'00"	35.37 C		Class A
PEG (1) ML 18192	PEG A ML 564754	ob11	114°20'00"	A ML 19781	0°00'00"	33.03 C		Class A

Mark and Vector

Survey Number ML 564754

Meridional Circuit Bay of Plenty 2000

From	To	Code	Bearing	Adpt Surv	Bearing Correction	Distance	Adpt Surv	Class
PEG A ML 564754	PEG D ML 564754	ob24	114°20'00"	A ML 19781	0°00'00"	51.78 C		Class A
PEG D ML 564754	IB 5 ML 564754	ob42	256°38'10"	M		129.68 M		
PEG D ML 564754	PEG B ML 564754	ob43	248°55'00"	A ML 20909	0°00'00"	65.45 C		Class A
PEG B ML 564754	PEG E ML 564754	ob30	248°55'00"	A ML 20909	0°00'00"	48.75 C		Class A
PEG D ML 564754	IT SO 51701	ob44	114°20'00"	A ML 13312	0°00'00"	10.06 A	ML 13312	
PEG F ML 564754	PEG C ML 564754	ob20	68°55'30"	C		48.75 C		Class A
PEG C ML 564754	UNMK 24 ML 564754	ob25	68°55'30"	C		16.05 C		Class A
UNMK 24 ML 564754	PEG A ML 564754	ob56	68°55'30"	C		15.95 C		Class A
PEG C ML 564754	UNMK 21 ML 564754	ob26	154°26'00"	C		3.25 C		Class A
UNMK 21 ML 564754	PEG B ML 564754	ob55	154°26'00"	C		33.72 C		Class A
PEG H ML 564754	PEG J ML 564754	ob22	73°47'00"	C		15.70 C		Class A
PEG J ML 564754	UNMK 27 ML 564754	ob27	44°17'00"	C		3.05 C		Class A
PEG K ML 564754	PEG L ML 564754	ob28	126°30'00"	C		0.63 C		Class A
PEG L ML 564754	PEG M ML 564754	ob29	37°48'00"	C		9.67 C		Class A
IB 5 ML 564754	PEG E ML 564754	ob46	119°35'00"	M		22.53 M		
IB 4 ML 564754	PEG H ML 564754	ob36	260°12'00"	M		29.50 M		
IB 4 ML 564754	PEG J ML 564754	ob37	267°20'00"	M		14.01 M		
IB 4 ML 564754	PEG K ML 564754	ob39	329°15'00"	M		9.90 M		
IB 4 ML 564754	PEG L ML 564754	ob40	330°45'00"	M		9.33 M		
IB 4 ML 564754	PEG M ML 564754	ob41	4°58'00"	M		15.84 M		
IB 1 ML 564754	PEG G ML 564754	ob33	357°42'00"	M		32.10 M		
IB 5 ML 564754	PEG F ML 564754	ob47	9°21'00"	M		22.56 M		
IB 5 ML 564754	PEG C ML 564754	ob48	51°00'20"	M		63.21 M		
IB 5 ML 564754	PEG A ML 564754	ob49	57°00'00"	M		94.20 M		

Mark and Vector

Survey Number ML 564754

Meridional Circuit Bay of Plenty 2000

From	To	Code	Bearing	Adpt Surv	Bearing Correction	Distance	Adpt Surv	Class
IB 5 ML 564754	PEG B ML 564754	ob50	84°21'00"	M		65.41 M		
UNMK 20 ML 564754	UNMK 21 ML 564754	ob52	68°55'30"	C		48.75 C		Class A
UNMK 22 ML 564754	UNMK 23 ML 564754	ob54	68°55'30"	C		59.50 C		Class A
UNMK 23 ML 564754	UNMK 24 ML 564754	ob57	99°09'00"	C		6.43 C		Class A
IB 1 ML 564754	RUM IX SO 51701	ob34	151°33'20"	M		227.86 M		
PEG H ML 564754	UNMK 25 ML 564754	ob21	334°26'00"	A	ML 18192	0°00'00"	1.52 C	Class A
UNMK 26 ML 564754	PEG H ML 564754	ob60	334°26'00"	A	ML 18192	0°00'00"	1.52 C	Class A
UNMK 27 ML 564754	PEG K ML 564754	ob62	44°17'00"	C		9.74 C		Class A
UNMK 25 ML 564754	UNMK 27 ML 564754	ob58	73°47'00"	C		18.60 C		Class A
UNMK 26 ML 564754	UNMK 28 ML 564754	ob61	73°47'00"	C		16.10 C		Class A
UNMK 28 ML 564754	UNMK 27 ML 564754	ob63	17°33'00"	C		3.61 C		Class A

Mark Name	Mark Condition	Description
BS SO 60879		flush in seal
IB 1 ML 564754		1m east of drain, 0.3 down
IB 2 ML 564754		1m east of drain, 0.3 down
IB 4 ML 564754		10.3 east of building, 0.3 down
IB 5 ML 564754		1m east of drain, 0.3 down
IS V SO 60785		0.7 east of bank, 0.25 down
IT IV SO 60785		2.3 east of fence, 0.3 down
PEG D ML 564754		OP ML 18192 ren
PEG E ML 564754		OP no rec 0.2 S/W of post
PEG K ML 564754		1m S/E of garage
PEG L ML 564754		1.4m south of garage
RUM IX SO 51701		SS nipple set in concrete pad in grass berm, 0.2m down.

*** End of Report ***

Schedule / Memorandum

Land Registration District

South Auckland

Survey Number

ML 564754

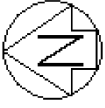
Territorial Authority (the Council)

Rotorua District

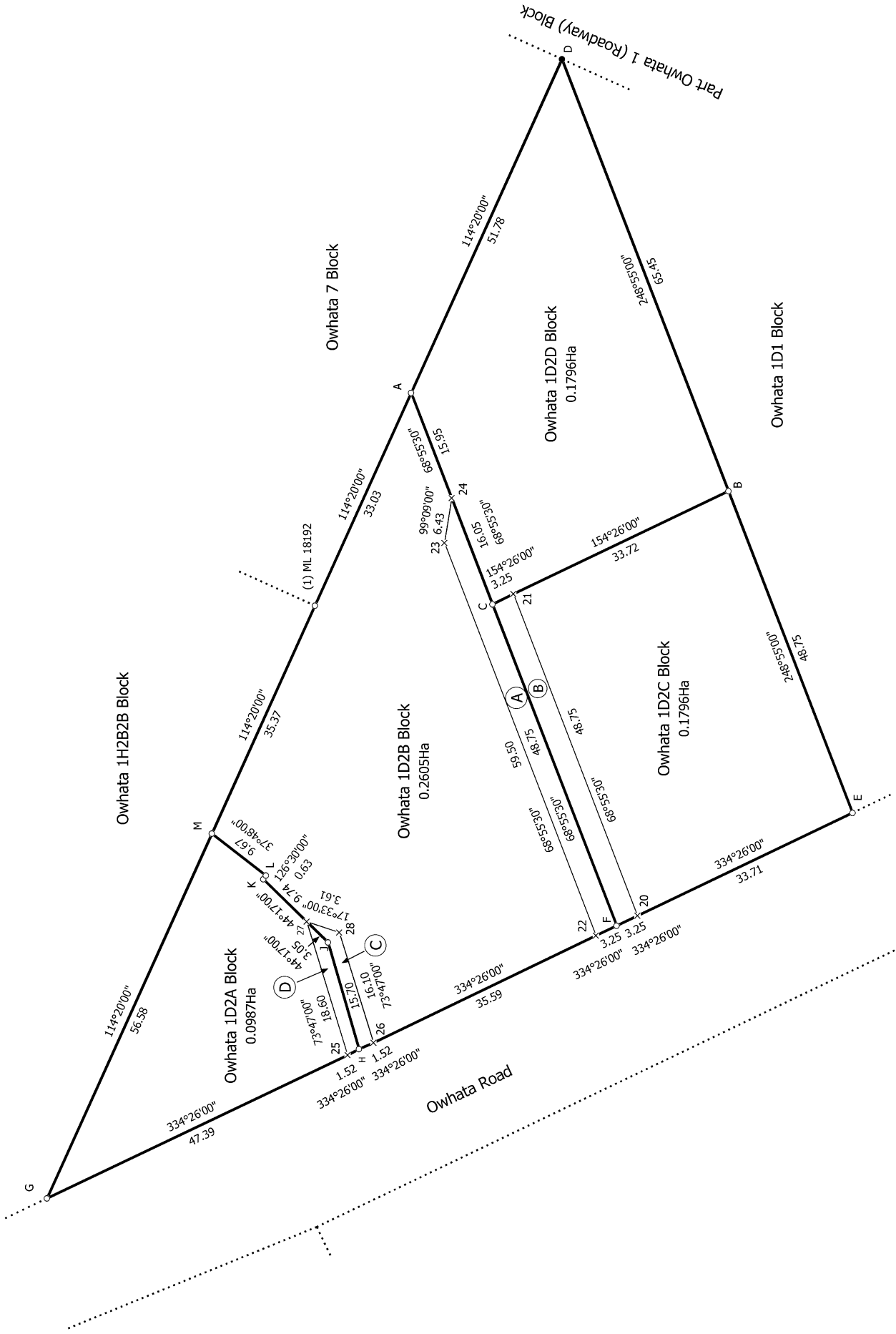
Schedule of Easements

Last Edited: 27 Sep 2021 11:18:51

<u>Purpose</u>	<u>Shown</u>	<u>Burdened Land</u> (<u>Servient Tenement</u>)	<u>Benefited Land</u> (<u>Dominant Tenement</u>)
Right of Way	A	Owhata 1D2B Block ML 564754	Owhata 1D2D Block ML 564754, Owhata 1D2C Block ML 564754
Right to convey electricity, gas, telecommunications, water	A	Owhata 1D2B Block ML 564754	Owhata 1D2D Block ML 564754
Right of Way	B	Owhata 1D2C Block ML 564754	Owhata 1D2B Block ML 564754, Owhata 1D2D Block ML 564754
Right to convey electricity, gas, telecommunications, water	B	Owhata 1D2C Block ML 564754	Owhata 1D2D Block ML 564754
Right of Way	C	Owhata 1D2B Block ML 564754	Owhata 1D2A Block ML 564754
	D	Owhata 1D2A Block ML 564754	Owhata 1D2B Block ML 564754
Right to drain water, sewage	A	Owhata 1D2B Block ML 564754	Owhata 1D2C Block ML 564754, Owhata 1D2D Block ML 564754
	B	Owhata 1D2C Block ML 564754	Owhata 1D2B Block ML 564754, Owhata 1D2D Block ML 564754
	C	Owhata 1D2B Block ML 564754	Owhata 1D2A Block ML 564754
	D	Owhata 1D2A Block ML 564754	Owhata 1D2B Block ML 564754



Diag. A



T 1/1

Partition of Owghata 1D2 Block

Surveyor: Nicholas Gordon Davies
 Firm: Creal Consultants Limited
 Date of Survey: 7/07/2021

Record of Survey
 ML 564754
 Approved on: 17/10/2022