

Record of Survey - ML 571535

Survey Number ML 571535
Surveyor Reference 425651 Gray
Surveyor Danny Ross Underwood
Survey Firm Stratum Consultants Limited
Surveyor Declaration I Danny Ross Underwood, being a licensed cadastral surveyor, certify that--
 (a) this dataset provided by me and its related survey are accurate, correct and in accordance with the Cadastral Survey Act 2002 and Cadastral Survey Rules 2021; and
 (b) the survey was undertaken by me or under my personal direction.
 Declared on 01 Jul 2022 10:03 AM

Survey Details

Dataset Description Maketu A 88G No 2A and Maketu A 88G No 2B being partition of Part Maketu A 88G No 2 Block
Purpose Partition
Status Approved by Maori Land Court **Type** Survey
Land District South Auckland **Survey Class** Class A
Meridional Circuit Bay of Plenty 2000 **Vertical Datum** None

Survey Dates

Surveyed Date 13/12/2021 **Certified Date** 01/07/2022
Submitted Date 01/07/2022 10:03:12 **Survey Approval Date** 01/07/2022
Deposit Date

Referenced Surveys

Survey Number	Land District	Bearing Correction
ML 20777	South Auckland	-0°01'00"
SO 59371	South Auckland	0°01'00"
SO 58797	South Auckland	-0°01'00"
ML 359669	South Auckland	0°00'00"

Territorial Authorities

Western Bay of Plenty District

Comprised In

RT 364419

Created Parcels

Parcels	Parcel Intent	Area	RT Reference
Maketu A 88G No 2A Block Maori Land Plan 571535	Maori	0.0827 Ha	
Maketu A 88G No 2B Block Maori Land Plan 571535	Maori	0.2964 Ha	
Total Area		0.3791 Ha	

Mark and Vector

Survey Number ML 571535

Meridional Circuit Bay of Plenty 2000

From	To	Code	Bearing	Adpt Surv	Bearing Correction	Distance	Adpt Surv	Class
IT II ML 21995	IT (2) ML 20777	ob0	242°48'50"	M		211.36 M		
IT (2) ML 20777	IS II ML 20777	ob5	83°05'30"	M		116.96 M		
IS II ML 20777	IS I ML 20777	ob25	2°57'40"	M		31.38 M		
IS I ML 20777	IT (2) ML 20777	ob26	248°54'20"	M		126.19 M		
IT (2) ML 20777	IS IV ML 20777	ob6	100°51'10"	M		90.94 M		
IS IV ML 20777	IS II ML 20777	ob9	40°39'30"	M		41.12 M		
IS IV ML 20777	IT III ML 20777	ob10	100°52'20"	A ML 20777	-0°01'00"	25.40 A ML 20777		
IT III ML 20777	IS II ML 20777	ob11	2°57'40"	A ML 20777	-0°01'00"	36.02 A ML 20777		
IT (2) ML 20777	IB I SO 59371	ob7	197°04'30"	M		64.73 M		
IB I SO 59371	IT X DP 33606	ob12	319°00'00"	A SO 58797	-0°01'00"	3.25 A SO 59371		
IT X DP 33606	IB III SO 58797	ob13	319°00'00"	A SO 58797	-0°01'00"	11.49 A SO 58797		
IB III SO 58797	IT (2) ML 20777	ob14	29°28'10"	A ML 359669	0°00'00"	58.30 A ML 359669		
IS I ML 20777	IT (1) ML 20777	ob27	2°57'40"	A ML 20777	-0°01'00"	48.26 A ML 20777		
IT (1) ML 20777	IT I SO 34696	ob18	260°14'00"	A ML 20777	-0°01'00"	18.82 A ML 20777		
IT I SO 34696	IT (2) ML 20777	ob19	228°21'20"	A ML 359669	0°00'00"	136.05 A ML 359669		
IS I ML 20777	IT II ML 21995	ob28	53°57'10"	M		86.92 M		
IB III SO 58797	PEG (1) SO 59371	ob15	45°17'00"	A SO 59371	0°01'00"	47.21 A SO 59371		
PEG (1) SO 59371	PEG (2) SO 59371	ob16	29°09'00"	A SO 59371	0°01'00"	2.96 A SO 59371		Class A
PEG (2) SO 59371	IT (2) ML 20777	ob20	157°09'00"	M		16.24 M		
PEG (1) SO 59371	PEG B ML 571535	ob17	89°59'00"	A ML 20777	-0°01'00"	45.61 C		Class A
PEG B ML 571535	PEG (4) ML 20777	ob22	89°59'00"	A ML 20777	-0°01'00"	43.59 C		Class A
PEG (4) ML 20777	IS IV ML 20777	ob23	274°30'00"	A ML 20777	-0°01'00"	4.78 A ML 20777		
PEG (4) ML 20777	PEG (1) ML 20777	ob24	359°59'00"	A ML 20777	-0°01'00"	77.97 A ML 20777		Class A
PEG (1) ML 20777	IT (1) ML 20777	ob29	38°19'00"	A ML 20777	-0°01'00"	42.22 A ML 20777		
PEG (2) SO 59371	PEG (3) SO 59371	ob21	39°21'30"	A SO 59371	0°01'00"	25.48 A SO 59371		Class A
PEG (3) SO 59371	IT (2) ML 20777	ob32	78°05'00"	M		22.96 M		
PEG (1) ML 20777	PEG (3) SO 59371	ob30	232°05'40"	A SO 59371	0°01'00"	90.69 A SO 59371		Class A
IT (2) ML 20777	PEG (1) SO 59371	ob8	164°27'00"	M		18.21 M		
PEG (3) SO 59371	PEG A ML 571535	ob31	89°59'00"	M		28.02 M		Class A
PEG A ML 571535	PEG B ML 571535	ob33	179°59'00"	M		22.28 M		Class A

Mark and Vector

Survey Number ML 571535

Meridional Circuit Bay of Plenty 2000

From	To	Code	Bearing	Adpt Surv	Bearing Correction	Distance	Adpt Surv	Class
IT (2) ML 20777	PEG (2) ML 20777	ob1	132°25'30"	A ML 20777	-0°01'00"	10.20 A	ML 20777	
PEG (2) ML 20777	PEG (3) ML 20777	ob34	212°45'30"	A ML 20777	-0°01'00"	12.67 A	ML 20777	
PEG (3) ML 20777	IT (2) ML 20777	ob36	357°48'00"	A ML 20777	-0°01'00"	17.55 A	ML 20777	
PEG (2) ML 20777	PEG (3) SO 59371	ob35	52°05'40"	A SO 59371	0°01'00"	18.92 A	SO 59371	
PEG (3) ML 20777	PEG (1) SO 59371	ob37	89°59'00"	A SO 59371	0°01'00"	4.16 A	SO 59371	
IT (2) ML 20777	PEG A ML 571535	ob2	84°37'10"	M		50.70 M		
IT (2) ML 20777	PEG B ML 571535	ob3	109°08'30"	M		53.44 M		

Mark Name	Mark Condition	Description
IB I SO 59371		Flush in seal
IT (2) ML 20777		4.5m east of fence 4.2m south of PP
IT II ML 21995		1m south of fence

*** End of Report ***

Occupation Diagram



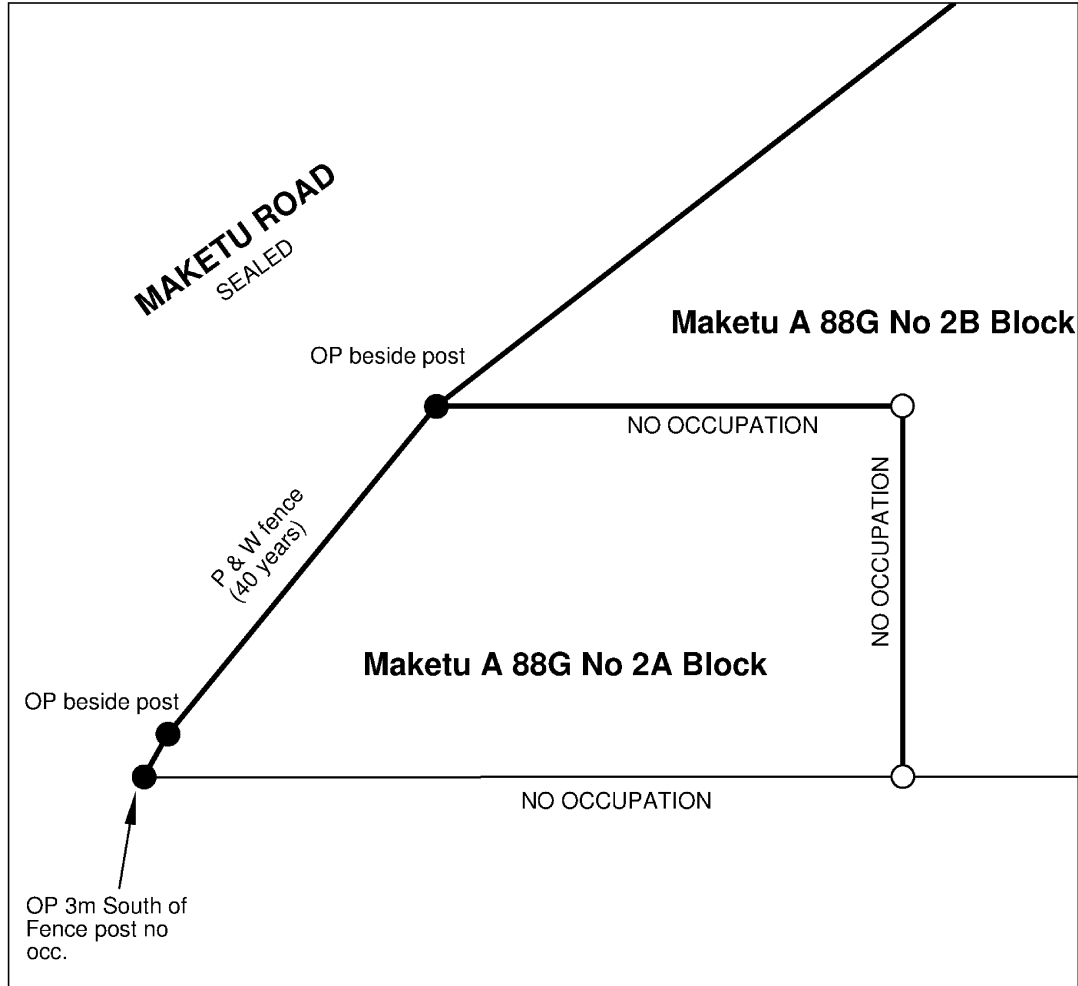
Supporting Document

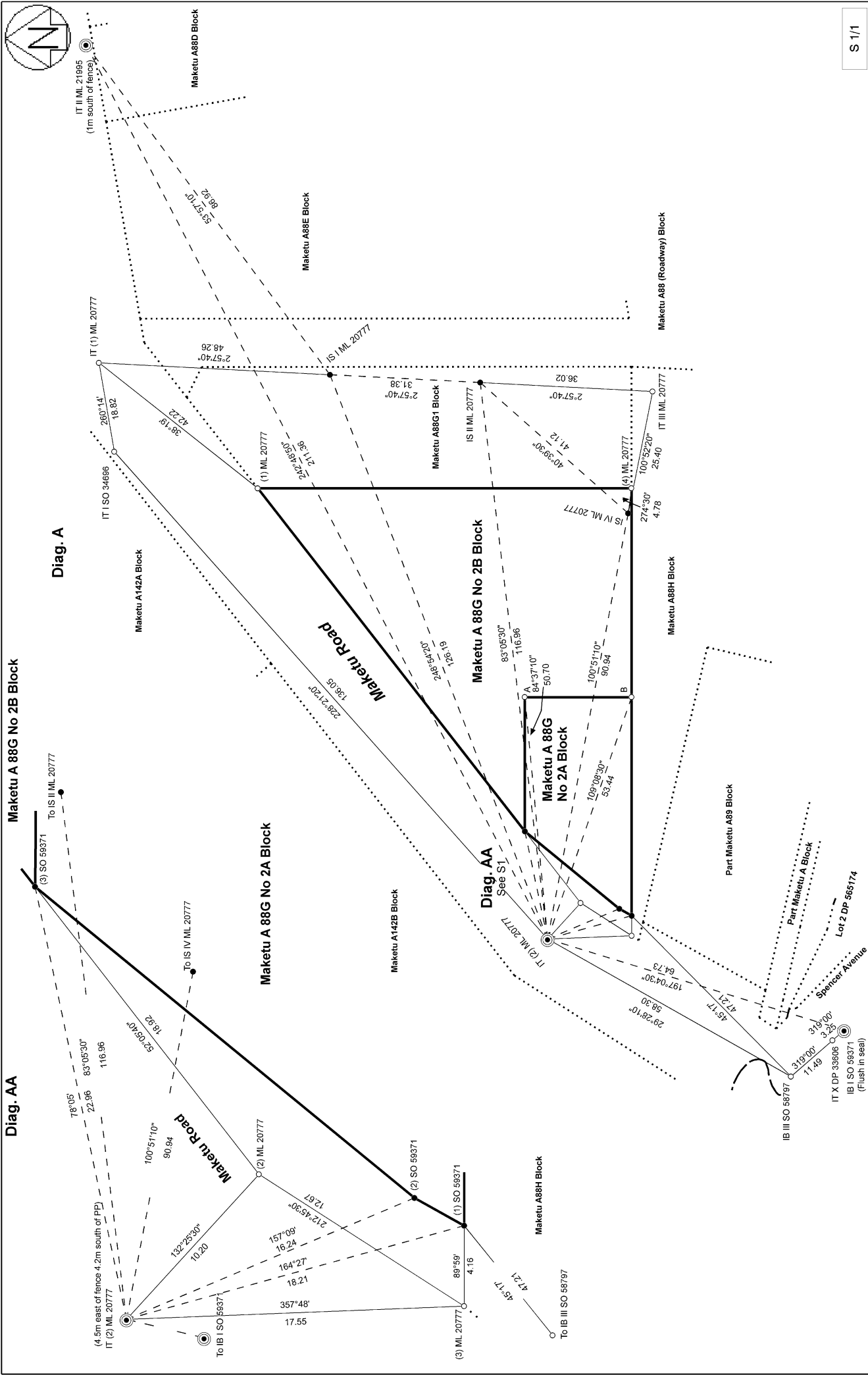
Occupation Diagram

Plan Number

ML 571535

Occupation Diagram





Record of Survey
 ML 571535
 Approved on: 1/07/2022

Surveyor: Danny Ross Underwood
 Firm: Stratum Consultants Limited
 Date of Survey: 13/12/2021

Maketu A 88G No 2A and Maketu A 88G No 2B being partition of Part Maketu A 88G No 2 Block

Land District: South Auckland
 Digitally Generated Plan
 Generated on: 22/07/2022 11:02:am Page 5 of 6



Diag. A

