

# Record of Survey - ML 576450

<b>Survey Number</b>	ML 576450		
<b>Surveyor Reference</b>	412111		
<b>Surveyor</b>	Kevin John Taylor		
<b>Survey Firm</b>	Survey Gisborne Ltd		
<b>Surveyor Declaration</b>	I Kevin John Taylor, being a licensed cadastral surveyor, certify that-- (a) this dataset provided by me and its related survey are accurate, correct and in accordance with the Cadastral Survey Act 2002 and Cadastral Survey Rules 2021; and (b) the survey was undertaken by me or under my personal direction. Declared on 17 Jun 2022 01:34 PM		

## Survey Details

<b>Dataset Description</b>	Nuhaka 9 and 10 (Formerly Nuhaka 2E3C6E2A)		
<b>Purpose</b>	Partition		
<b>Status</b>	Approved by Maori Land Court	<b>Type</b>	Survey
<b>Land District</b>	Hawkes Bay	<b>Survey Class</b>	Class B
<b>Meridional Circuit</b>	Hawkes Bay 2000	<b>Vertical Datum</b>	None

## Survey Dates

<b>Surveyed Date</b>	22/04/2022	<b>Certified Date</b>	17/06/2022
<b>Submitted Date</b>	17/06/2022 13:34:34	<b>Survey Approval Date</b>	20/06/2022
<b>Deposit Date</b>			

## Referenced Surveys

Survey Number	Land District	Bearing Correction
ML 257	Hawkes Bay	0°47'00"
ML 773	Hawkes Bay	0°47'00"
ML 1472	Hawkes Bay	0°00'00"
ML 1619	Hawkes Bay	0°00'00"
SO 4837	Hawkes Bay	0°00'00"
SO 6306	Hawkes Bay	0°00'00"
ML 385386	Hawkes Bay	0°00'00"

## Territorial Authorities

Wairoa District

## Comprised In

RT HBP4/228

## Created Parcels

Parcels	Parcel Intent	Area	RT Reference
Nuhaka 9 Block Maori Land Plan 576450	Maori	0.3711 Ha	
Nuhaka 10 Block Maori Land Plan 576450	Maori	0.4384 Ha	
Area A Maori Land Plan 576450	Easement		
<b>Total Area</b>		<b>0.8095 Ha</b>	

# Mark and Vector

Survey Number ML 576450  
 Meridional Circuit Hawkes Bay 2000

From	To	Code	Bearing	Adpt Surv	Bearing Correction	Distance	Adpt Surv	Class
BM HH 74 SO 6306	PAOKUHUKUR NO 2	ob0	350°41'46"	M				
BM HH 74 SO 6306	A (Nuhaka SD)	ob1	93°27'01"	M				
BM HH 74 SO 6306	SS 118 SO 4837	ob2	75°45'20"	M		113.80 M		
SS 118 SO 4837	IS I ML 576450	ob3	262°56'12"	M		24.37 M		
IS I ML 576450	IS I SO 6306	ob10	262°56'12"	M		93.01 M		
IS I SO 6306	BM HH 74 SO 6306	ob14	155°30'00"	M		14.90 M		
SS 118 SO 4837	A (Nuhaka SD)	ob4	93°47'33"	M				
SS 118 SO 4837	IT V ML 576450	ob5	82°48'50"	M		50.37 M		
IT V ML 576450	BM HH 74 SO 6306	ob16	257°55'10"	M		163.91 M		
IS I ML 576450	IT II ML 576450	ob11	3°38'00"	M		38.19 M		
IT II ML 576450	IT III ML 576450	ob18	2°30'40"	M		92.22 M		
IT III ML 576450	IT IV ML 576450	ob19	77°18'00"	M		62.00 M		
IT IV ML 576450	IT V ML 576450	ob23	176°55'50"	M		134.78 M		
SS 118 SO 4837	PEG Ic ML 576450	ob6	355°27'00"	M		5.05 M		
SS 118 SO 4837	PEG ML 867	ob7	175°27'00"	A SO 4837	0°00'00"	5.05 A SO 4837		
SS 118 SO 4837	PEG 20 ML 773	ob8	175°27'00"	A SO 4837	0°00'00"	15.16 A SO 4837		
SS 118 SO 4837	SS 119 SO 4837	ob9	87°55'34"	A SO 4837	0°00'00"	229.58 A SO 4837		
SS 119 SO 4837	PEG ML 867	ob30	173°21'00"	A SO 4837	0°00'00"	5.04 A SO 4837		
SS 119 SO 4837	PEG ML 773	ob31	173°21'00"	A SO 4837	0°00'00"	15.19 A SO 4837		
IS I SO 6306	SS 117D SO 4837	ob15	262°56'12"	A SO 6306	0°00'00"	147.78 A SO 6306		
SS 117D SO 4837	PEG SO 4837	ob32	52°12'00"	A SO 4837	0°00'00"	9.64 A SO 4837		
SS 117D SO 4837	PEG ML 941	ob33	206°37'30"	A SO 4837	0°00'00"	18.37 A SO 4837		
IS I ML 576450	PEG Ia ML 576450	ob12	31°28'00"	M		6.44 M		
IS I ML 576450	PEG Ib ML 576450	ob13	53°53'00"	M		10.37 M		
IT III ML 576450	UNMK IIIa ML 576450	ob20	324°14'00"	C		9.35 C		
IT III ML 576450	PEG IIIb ML 576450	ob21	179°21'30"	M		44.85 M		
IT III ML 576450	PEG IIIc ML 576450	ob22	356°47'00"	M		7.84 M		
IT IV ML 576450	PEG IVa ML 576450	ob24	241°56'00"	M		6.94 M		

# Mark and Vector

**Survey Number** ML 576450  
**Meridional Circuit** Hawkes Bay 2000

From	To	Code	Bearing	Adpt Surv	Bearing Correction	Distance	Adpt Surv	Class
IT IV ML 576450	PEG IVb ML 576450	ob25	183°20'30"	M		60.17 M		
IT V ML 576450	PEG Va ML 576450	ob17	272°18'00"	M		7.32 M		
PEG Ic ML 576450	PEG Ib ML 576450	ob26	262°55'00"	A ML 773	0°47'00"	15.52 C		Class B
PEG Ib ML 576450	PEG Ia ML 576450	ob36	262°55'00"	A ML 773	0°47'00"	5.06 C		Class B
PEG Ia ML 576450	UNMK IIIa ML 576450	ob34	358°58'30"	C		132.37 A ML 1619		Class B
UNMK IIIa ML 576450	PEG IIIc ML 576450	ob37	87°20'30"	C		5.03 C		Class B
PEG IIIc ML 576450	PEG IVa ML 576450	ob39	87°20'30"	C		54.86 C		Class B
PEG IVa ML 576450	PEG IVb ML 576450	ob41	177°22'00"	A ML 773	0°47'00"	56.86 C		Class B
PEG IVb ML 576450	PEG Va ML 576450	ob42	177°22'00"	A ML 773	0°47'00"	74.30 C		Class B
PEG Va ML 576450	PEG Ic ML 576450	ob44	267°55'20"	A ML 773	0°47'00"	43.09 C		Class B
PEG IVb ML 576450	PEG IIIb ML 576450	ob43	271°36'30"	C		56.49 C		Class B
PEG IIIc ML 576450	PEG IIIb ML 576450	ob40	178°58'30"	C		52.68 C		Class B
PEG IIIb ML 576450	PEG Ib ML 576450	ob38	178°58'30"	C		79.30 C		Class B
PEG Ia ML 576450	PEG SO 4837	ob35	262°55'00"	A ML 773	0°47'00"	236.51 C		
PEG ML 867	PEG ML 867	ob27	87°55'20"	C		229.76 C		
PEG 20 ML 773	PEG ML 773	ob28	87°55'20"	C		230.13 C		
PEG 20 ML 773	PEG ML 941	ob29	262°55'00"	A ML 773	0°47'00"	274.68 C		

Mark Name	Mark Condition	Description
BM HH 74 SO 6306		Stainless steel pin set in concrete, down 0.5 metres.
IS I ML 576450		Down 0.25 metres.
IT II ML 576450		Down 0.25 metres.
IT III ML 576450		Galvanised iron tube, down 0.25 metres.
IT IV ML 576450		Down 0.25 metres.
IT V ML 576450		Down 0.25 metres.
SS 118 SO 4837		Iron tube set in concrete, down 0.65 metres.
UNMK IIIa ML 576450		Boundary position in stream.

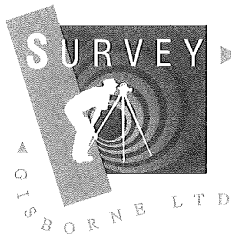
\*\*\* End of Report \*\*\*

**EASEMENT SCHEDULE**

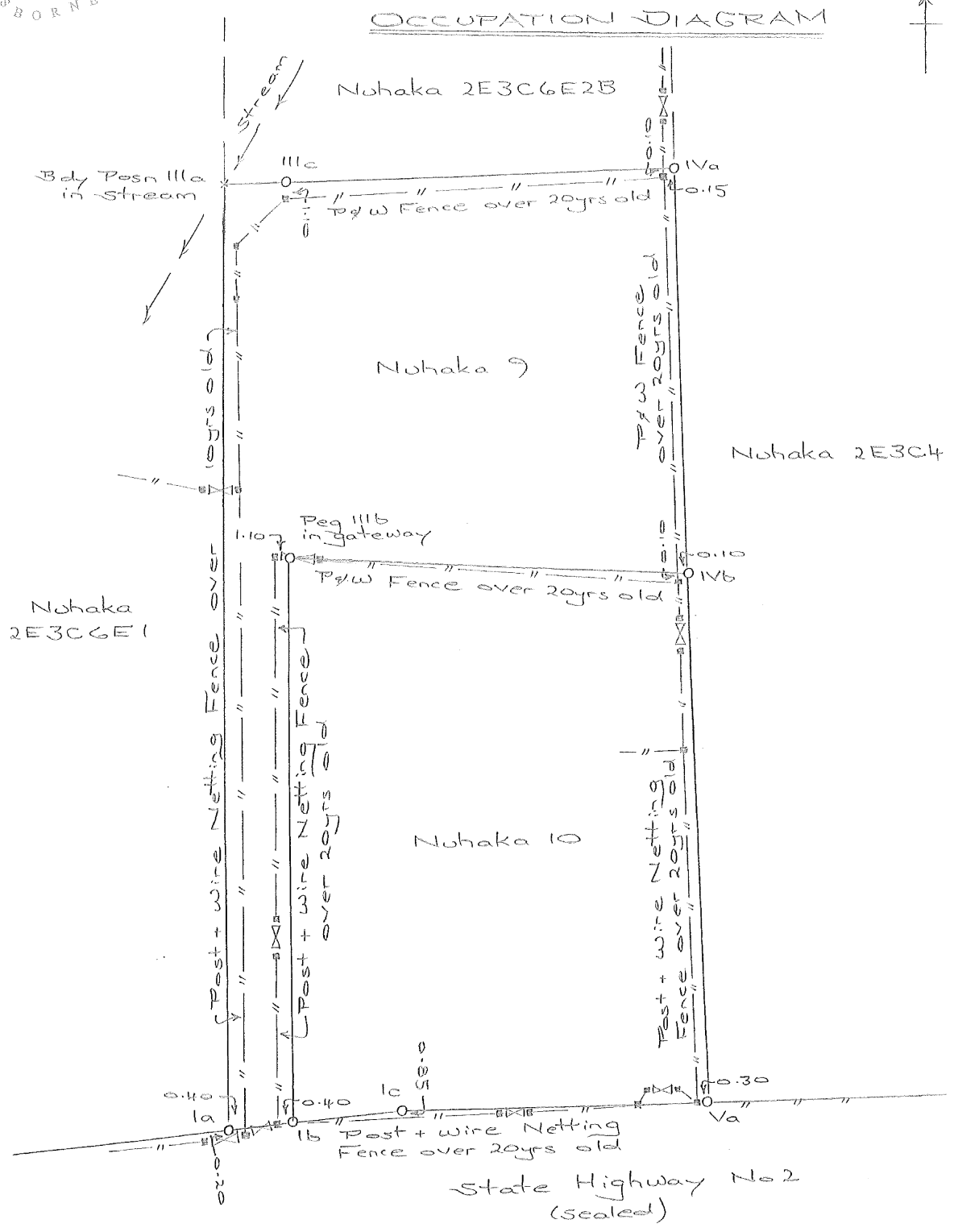
**Plan Number:** ML 576450  
**Land Registration District:** Hawkes Bay  
**Territory Authority:** Wairoa District Council

<b>Schedule of Existing Easement</b>			
<b>Purpose</b>	<b>Shown</b>	<b>Servient Tenement (Burdened Land)</b>	<b>Created by</b>
Right of Way	<b>A</b>	Nuhaka 9 hereon	

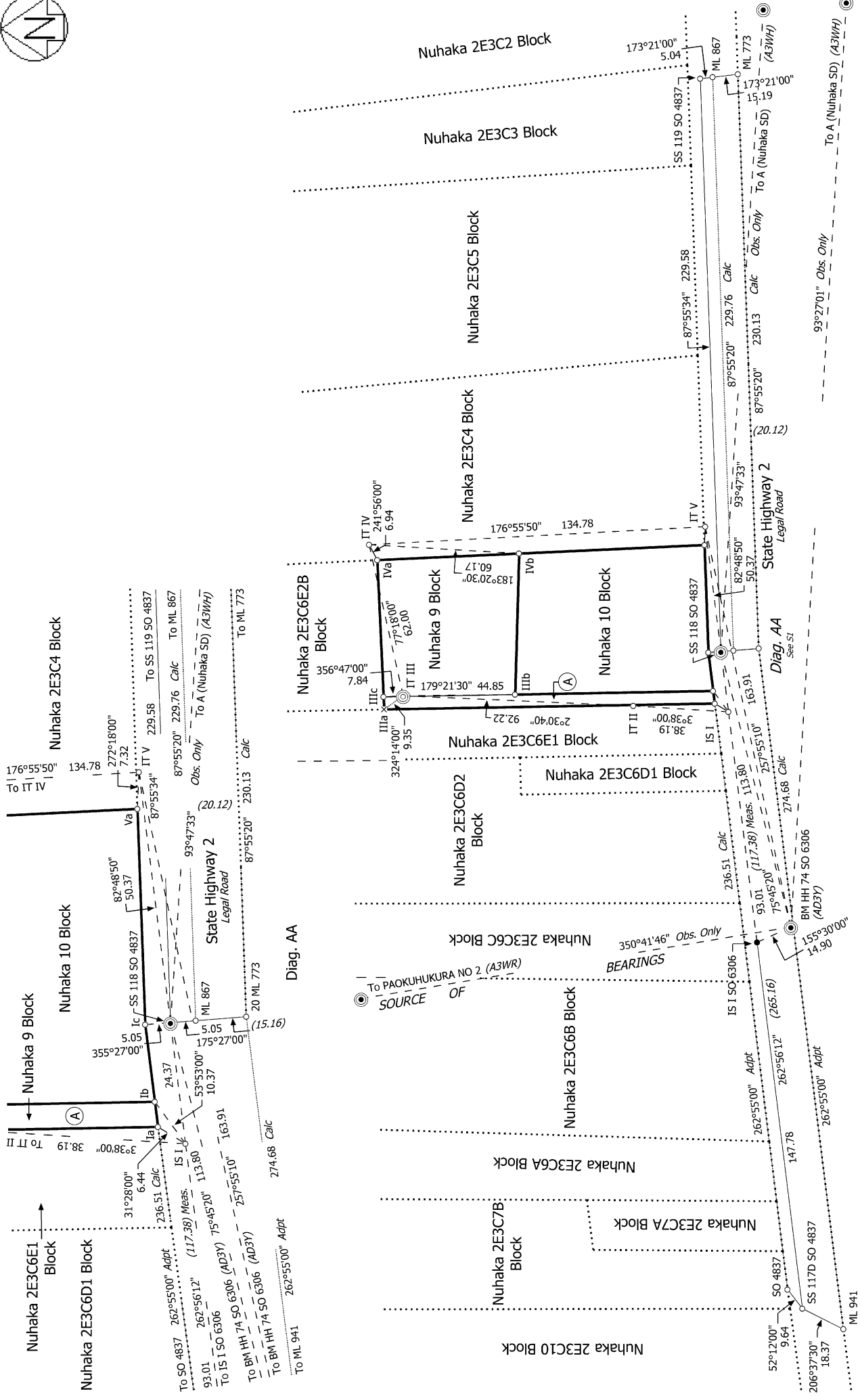
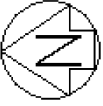
# Occupation Diagram



Corner Palmerston Road and Derby Street,  
 PO Box 440, Gisborne 4040  
 Email: surveyor@surveygis.co.nz admin@surveygis.co.nz  
 Office: 06 868 5588  
 www.surveygis.co.nz

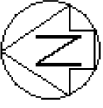


We will professionally work with you through each step to maximise the value and sustainability of your property and investment.



Diag. A

<p>Land District: Hawkes Bay</p> <p><b>Digitally Generated Plan</b> Generated on: 08/02/2023 06:55am   Page 6 of 7</p>	<p><b>Nuhaka 9 and 10 (Formerly Nuhaka 2E3C6E2A)</b></p>	<p>Surveyor: Kevin John Taylor Firm: Survey Gisborne Ltd Date of Survey: 22/04/2022</p>	<p>Record of Survey ML 576450 Approved on: 20/06/2022</p>
----------------------------------------------------------------------------------------------------------------------------	----------------------------------------------------------	-------------------------------------------------------------------------------------------------	-------------------------------------------------------------------



Diag. A

T 1/1

Record of Survey  
ML 576450  
Approved on: 20/06/2022

Surveyor: Kevin John Taylor  
Firm: Survey Gisborne Ltd  
Date of Survey: 22/04/2022

Nuhaka 9 and 10 (Formerly Nuhaka 2E3C6E2A)