



# Record of Survey - ML 580468

---

**Survey Number** ML 580468  
**Surveyor Reference** 412371  
**Surveyor** Kevin John Taylor  
**Survey Firm** Survey Gisborne Ltd  
**Surveyor Declaration** I Kevin John Taylor, being a licensed cadastral surveyor, certify that--  
(a) this dataset provided by me and its related survey are accurate, correct and in accordance with the Cadastral Survey Act 2002 and Cadastral Survey Rules 2021; and  
(b) the survey was undertaken by me or under my personal direction.  
Declared on 09 Aug 2022 03:02 PM

---

## Survey Details

**Dataset Description** Sections 20 to 22 Block III Waipiro Maori Township (Formerly Sections 1 - 3 Block III Waipiro Maori Township)  
**Purpose** Partition  
**Status** Approved by Maori Land Court  
**Land District** Gisborne  
**Meridional Circuit** Poverty Bay 2000

|                       |         |
|-----------------------|---------|
| <b>Type</b>           | Survey  |
| <b>Survey Class</b>   | Class B |
| <b>Vertical Datum</b> | None    |

---

## Survey Dates

|                       |                     |                             |            |
|-----------------------|---------------------|-----------------------------|------------|
| <b>Surveyed Date</b>  | 13/07/2022          | <b>Certified Date</b>       | 09/08/2022 |
| <b>Submitted Date</b> | 09/08/2022 15:02:54 | <b>Survey Approval Date</b> | 29/08/2022 |
| <b>Deposit Date</b>   |                     |                             |            |

---

## Referenced Surveys

| Survey Number | Land District | Bearing Correction |
|---------------|---------------|--------------------|
| ML 1384       | Gisborne      | 0°00'00"           |
| DP 1980       | Gisborne      | 0°00'00"           |
| SO 4892       | Gisborne      | 0°00'00"           |
| SO 462680     | Gisborne      | 0°00'00"           |
| SO 499432     | Gisborne      | 0°00'00"           |

---

## Territorial Authorities

Gisborne District

---

## Comprised In

RT 477252  
RT 477253  
RT 640492  
RT 443259

---

## Created Parcels

| Parcels   | Parcel Intent | Area      | RT Reference |
|---|---------------|-----------|--------------|
| Waipiro Maori Township Block III Section 20 Block<br>Maori Land Plan 580468 | Maori         | 0.0908 Ha |              |

---



# Record of Survey - ML 580468

---

## Created Parcels

| Parcels   | Parcel Intent | Area            | RT Reference |
|---|---------------|-----------------|--------------|
| Waipiro Maori Township Block III Section 21 Block<br>Maori Land Plan 580468 | Maori         | 0.3412 Ha       |              |
| Waipiro Maori Township Block III Section 22 Block<br>Maori Land Plan 580468 | Maori         | 0.3741 Ha       |              |
| <b>Total Area</b>   |               | <hr/> 0.8061 Ha |              |

# Mark and Vector

Survey Number ML 580468  
Meridional Circuit Poverty Bay 2000

| From             | To               | Code | Bearing      | Adpt Surv | Bearing Correction | Distance | Adpt Surv | Class   |
|------------------|------------------|------|--------------|-----------|--------------------|----------|-----------|---------|
| BP 1 SO 448992   | IT 2 SO 462680   | ob0  | 1°48'30" M   |           |                    | 94.95 M  |           | Class B |
| IT 2 SO 462680   | IT 1 SO 462680   | ob1  | 39°17'00" M  |           |                    | 71.19 M  |           |         |
| IT 1 SO 462680   | BP 1 SO 448992   | ob3  | 197°46'05" A | SO 499432 | 0°00'00"           | 157.51 A | SO 499432 |         |
| IT 1 SO 462680   | IS I ML 580468   | ob4  | 16°11'10" M  |           |                    | 45.77 M  |           |         |
| IS I ML 580468   | IT II ML 580468  | ob6  | 312°13'30" M |           |                    | 75.64 M  |           |         |
| IT II ML 580468  | IT 2 SO 462680   | ob11 | 180°41'40" M |           |                    | 149.90 M |           |         |
| IT II ML 580468  | IS III ML 580468 | ob10 | 235°16'40" M |           |                    | 65.80 M  |           |         |
| IS III ML 580468 | IT IV ML 580468  | ob14 | 235°16'40" M |           |                    | 17.95 M  |           |         |
| IT IV ML 580468  | IS V ML 580468   | ob18 | 146°44'30" M |           |                    | 97.38 M  |           |         |
| IS V ML 580468   | IT 2 SO 462680   | ob20 | 146°44'30" M |           |                    | 24.82 M  |           |         |
| IS I ML 580468   | IT I SO 499432   | ob7  | 16°11'10" M  |           |                    | 53.93 M  |           |         |
| IT I SO 499432   | IS IV SO 499432  | ob22 | 110°59'10" A | SO 499432 | 0°00'00"           | 90.49 A  | SO 499432 |         |
| IS IV SO 499432  | IT 1 SO 462680   | ob26 | 240°34'20" A | SO 499432 | 0°00'00"           | 128.91 A | SO 499432 |         |
| IT 2 SO 462680   | IT SO 4892       | ob2  | 132°00'30" M |           |                    | 16.39 M  |           |         |
| IT I SO 499432   | IT VI ML 580468  | ob23 | 14°32'00" M  |           |                    | 83.62 M  |           |         |
| IT I SO 499432   | IT II SO 499432  | ob24 | 14°21'00" A  | SO 499432 | 0°00'00"           | 83.42 A  | SO 499432 |         |
| IT I SO 499432   | PEG Ia SO 499432 | ob25 | 107°50'00" A | SO 499432 | 0°00'00"           | 4.25 A   | SO 499432 |         |
| IT SO 4892       | PEG ML 1384      | ob27 | 19°40'20" A  | DP 1980   | 0°00'00"           | 14.15 A  | DP 1980   |         |
| PEG ML 1384      | PEG IA ML 1384   | ob29 | 5°31'00" A   | ML 1384   | 0°00'00"           | 20.24 A  | ML 1384   |         |
| PEG IA ML 1384   | PEG I ML 1384    | ob30 | 5°31'00" A   | ML 1384   | 0°00'00"           | 10.46 A  | ML 1384   |         |
| PEG I ML 1384    | PEG II ML 1384   | ob31 | 58°00'00" A  | ML 1384   | 0°00'00"           | 35.18 A  | ML 1384   |         |
| PEG II ML 1384   | PEG ML 1384      | ob32 | 15°29'00" A  | ML 1384   | 0°00'00"           | 20.90 A  | ML 1384   |         |
| PEG ML 1384      | PEG ML 1384      | ob34 | 15°29'00" A  | ML 1384   | 0°00'00"           | 18.11 A  | ML 1384   |         |
| PEG ML 1384      | PEG ML 1384      | ob35 | 15°29'00" A  | ML 1384   | 0°00'00"           | 18.11 A  | ML 1384   |         |
| PEG ML 1384      | PEG ML 1384      | ob36 | 15°29'00" A  | ML 1384   | 0°00'00"           | 18.11 A  | ML 1384   |         |
| PEG ML 1384      | PEG Ia SO 499432 | ob37 | 15°29'00" A  | ML 1384   | 0°00'00"           | 26.45 A  | ML 1384   |         |
| PEG II ML 1384   | PEG 2 ML 580468  | ob33 | 306°44'30" C |           |                    | 21.59 C  |           |         |
| PEG 2 ML 580468  | PEG 1 ML 580468  | ob38 | 238°00'00" A | ML 1384   | 0°00'00"           | 48.24 A  | ML 1384   | Class B |
| PEG 1 ML 580468  | PEG ML 1384      | ob39 | 145°21'00" A | ML 1384   | 0°00'00"           | 19.86 A  | ML 1384   |         |
| PEG ML 1384      | PEG IA ML 1384   | ob41 | 90°11'00" A  | ML 1384   | 0°00'00"           | 16.07 A  | ML 1384   |         |
| PEG 1 ML 580468  | PEG ML 1384      | ob40 | 325°21'00" A | ML 1384   | 0°00'00"           | 68.70 A  | ML 1384   | Class B |
| PEG ML 1384      | PEG ML 1384      | ob42 | 55°30'00" A  | ML 1384   | 0°00'00"           | 49.35 A  | ML 1384   |         |
| PEG ML 1384      | PEG ML 1384      | ob45 | 105°30'00" A | ML 1384   | 0°00'00"           | 53.59 A  | ML 1384   |         |
| PEG ML 1384      | PEG 2 ML 580468  | ob47 | 195°29'00" A | ML 1384   | 0°00'00"           | 46.23 A  | ML 1384   |         |

# Mark and Vector

Survey Number ML 580468

Meridional Circuit Poverty Bay 2000

| From             | To               | Code | Bearing    | Adpt Surv | Bearing Correction | Distance | Adpt Surv | Class   |
|------------------|------------------|------|------------|-----------|--------------------|----------|-----------|---------|
| PEG ML 1384      | PEG 8 ML 580468  | ob43 | 325°21'00" | A ML 1384 | 0°00'00"           | 25.55 A  | ML 1384   |         |
| PEG ML 1384      | PEG 6 ML 580468  | ob46 | 350°33'00" | A ML 1384 | 0°00'00"           | 28.14 A  | ML 1384   |         |
| PEG 6 ML 580468  | PEG 5 ML 580468  | ob51 | 350°33'00" | A ML 1384 | 0°00'00"           | 8.05 A   | ML 1384   | Class B |
| PEG ML 1384      | PEG 4 ML 580468  | ob48 | 15°29'00"  | A ML 1384 | 0°00'00"           | 32.77 A  | ML 1384   | Class B |
| IS V ML 580468   | PEG 1 ML 580468  | ob21 | 15°50'30"  | M         |                    | 18.86 M  |           |         |
| IT 1 SO 462680   | PEG 2 ML 580468  | ob5  | 306°35'00" | M         |                    | 15.72 M  |           |         |
| IS I ML 580468   | PEG 3 ML 580468  | ob8  | 282°56'30" | M         |                    | 15.24 M  |           |         |
| IS I ML 580468   | PEG 4 ML 580468  | ob9  | 354°06'00" | M         |                    | 41.77 M  |           |         |
| IT II ML 580468  | PEG 6 ML 580468  | ob12 | 275°15'00" | M         |                    | 13.35 M  |           |         |
| IT II ML 580468  | PEG 5 ML 580468  | ob13 | 302°04'30" | M         |                    | 17.25 M  |           |         |
| IS III ML 580468 | PEG 8 ML 580468  | ob15 | 292°17'30" | M         |                    | 10.58 M  |           |         |
| IS III ML 580468 | PEG 7 ML 580468  | ob16 | 42°31'00"  | M         |                    | 39.21 M  |           |         |
| IS III ML 580468 | PEG 10 ML 580468 | ob17 | 105°48'00" | M         |                    | 27.49 M  |           |         |
| IT IV ML 580468  | PEG 9 ML 580468  | ob19 | 101°00'00" | M         |                    | 17.43 M  |           |         |
| PEG ML 1384      | PEG 9 ML 580468  | ob44 | 325°21'00" | A ML 1384 | 0°00'00"           | 4.20 C   |           | Class B |
| PEG 9 ML 580468  | PEG 8 ML 580468  | ob58 | 325°21'00" | A ML 1384 | 0°00'00"           | 21.35 C  |           | Class B |
| PEG 8 ML 580468  | PEG 7 ML 580468  | ob50 | 55°33'00"  | C         |                    | 44.00 C  |           | Class B |
| PEG 7 ML 580468  | PEG 6 ML 580468  | ob55 | 55°33'00"  | C         |                    | 17.32 C  |           | Class B |
| PEG 5 ML 580468  | PEG 4 ML 580468  | ob52 | 105°32'00" | C         |                    | 68.86 A  | ML 1384   | Class B |
| PEG ML 1384      | PEG 3 ML 580468  | ob49 | 195°29'00" | A ML 1384 | 0°00'00"           | 6.80 C   |           | Class B |
| PEG 3 ML 580468  | PEG 2 ML 580468  | ob53 | 195°29'00" | A ML 1384 | 0°00'00"           | 39.43 C  |           | Class B |
| PEG 3 ML 580468  | PEG 10 ML 580468 | ob54 | 272°02'30" | C         |                    | 68.83 C  |           | Class B |
| PEG 10 ML 580468 | PEG 9 ML 580468  | ob56 | 255°52'00" | C         |                    | 24.85 C  |           | Class B |
| PEG 10 ML 580468 | PEG 7 ML 580468  | ob57 | 0°04'30"   | C         |                    | 36.39 C  |           | Class B |

# Mark and Vector

Survey Number ML 580468

Meridional Circuit Poverty Bay 2000

| From            | To              | Code | Bearing     | Adpt Surv | Bearing Correction | Distance | Adpt Surv | Class |
|-----------------|-----------------|------|-------------|-----------|--------------------|----------|-----------|-------|
| IT II SO 499432 | IT VI ML 580468 | ob28 | 67°38'00" C |           |                    | 0.33 C   |           |       |

| Mark Name        | Mark Condition | Description  |
|------------------|----------------|--|
| BP 1 SO 448992   |                | Bronze plaque set in concrete, down 0.2 metres, in grass berm. |
| IS I ML 580468   |                | Flush in seal.   |
| IS III ML 580468 |                | Down 0.25 metres.  |
| IS V ML 580468   |                | Down 0.25 metres.  |
| IT 2 SO 462680   |                | Iron tube, down 0.2 metres, in grass berm.                     |
| IT II ML 580468  |                | Galvanised iron tube, down 0.3 metres.                         |
| IT IV ML 580468  |                | Down 0.2 metres.   |
| IT VI ML 580468  |                | IT II SO 499432 found out of position.                         |

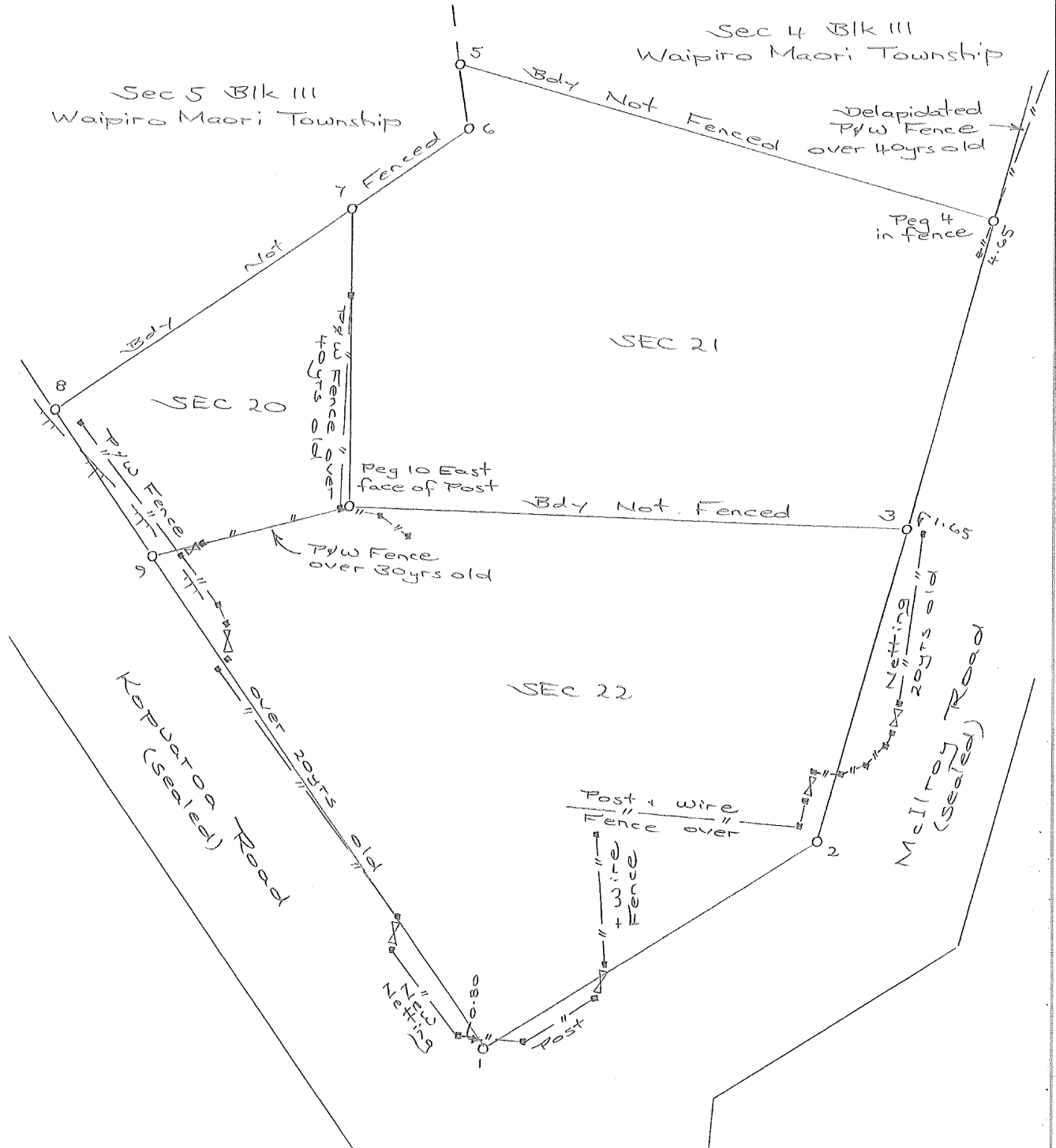
\*\*\* End of Report \*\*\*

# Occupation Diagram



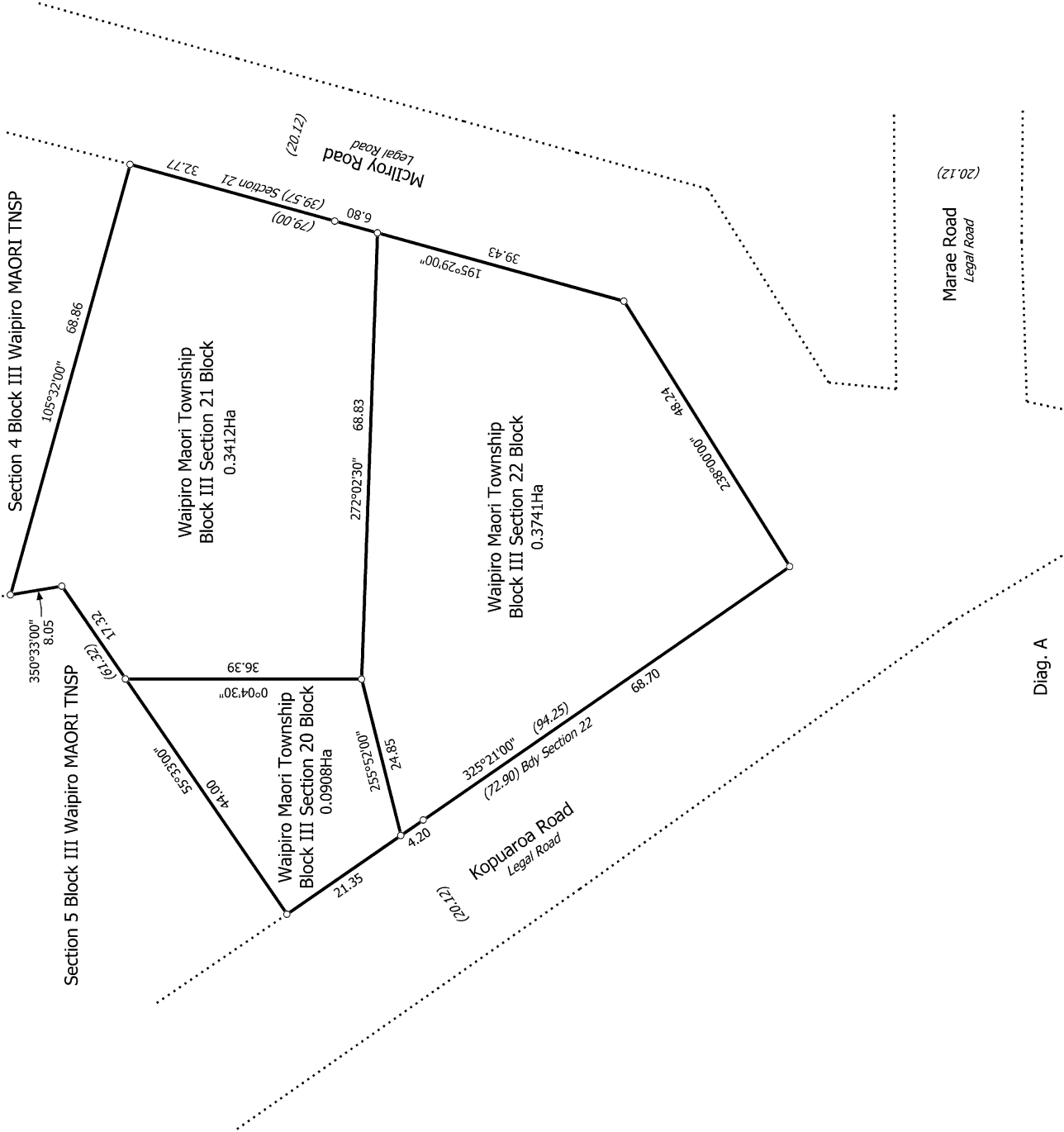
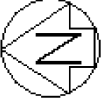
Corner Palmerston Road and Derby Street,  
 PO Box 440, Gisborne 4040  
 Email: [surveyor@surveygis.co.nz](mailto:surveyor@surveygis.co.nz) [admin@surveygis.co.nz](mailto:admin@surveygis.co.nz)  
 Office: 06 868 5588  
[www.surveygis.co.nz](http://www.surveygis.co.nz)

## OCCUPATION DIAGRAM



We will professionally work with you through each step to maximise the value and sustainability of your property and investment.





Diag. A

T 1/1

Land District: Gisborne

**Digitally Generated Plan**

Generated on: 21/02/2023 12:05pm | Page 8 of 8

Sections 20 to 22 Block III Waipiro Maori Township (Formerly Sections 1 - 3)  
Block III Waipiro Maori Township

Surveyor: Kevin John Taylor  
Firm: Survey Gisborne Ltd  
Date of Survey: 13/07/2022

Record of Survey  
ML 580468  
Approved on: 29/08/2022