



Record of Survey - ML 586558

Survey Number	ML 586558
Surveyor Reference	412314
Surveyor	Kevin John Taylor
Survey Firm	Survey Gisborne Ltd
Surveyor Declaration	I Kevin John Taylor, being a licensed cadastral surveyor, certify that-- (a) this dataset provided by me and its related survey are accurate, correct and in accordance with the Cadastral Survey Act 2002 and Cadastral Survey Rules 2021; and (b) the survey was undertaken by me or under my personal direction. Declared on 09 Jan 2023 08:53 AM

Survey Details

Dataset Description	Hueatepo 6A and 6B (Formerly Hueatepo 6)		
Purpose	Partition		
Status	Approved as to Survey	Type	Survey
Land District	Gisborne	Survey Class	Class A
Meridional Circuit	Poverty Bay 2000	Vertical Datum	None

Survey Dates

Surveyed Date	19/12/2022	Certified Date	09/01/2023
Submitted Date	09/01/2023 08:53:50	Survey Approval Date	09/02/2023
Deposit Date			

Referenced Surveys

Survey Number	Land District	Bearing Correction
SO 8086	Gisborne	0°00'00"
ML 6065	Gisborne	0°00'00"
LT 7830	Gisborne	0°00'00"
ML 8894	Gisborne	0°00'00"
DP 382031	Gisborne	0°00'00"

Territorial Authorities

Gisborne District

Comprised In

RT 259585

Created Parcels

Parcels	Parcel Intent	Area	RT Reference
Hueatepo 6A Block Maori Land Plan 586558	Maori	0.0400 Ha	
Hueatepo 6B Block Maori Land Plan 586558	Maori	0.0802 Ha	
Area A Maori Land Plan 586558	Easement		
Total Area		<u>0.1202 Ha</u>	

Mark and Vector

Survey Number ML 586558
Meridional Circuit Poverty Bay 2000

From	To	Code	Bearing	Adpt Surv	Bearing Correction	Distance	Adpt Surv	Class
IT II ML 8894	IS II LT 7830	ob0	329°24'00" M			141.55 M		Class A
IS II LT 7830	IT I LT 7830	ob2	348°53'50" M			44.31 M		
IT I LT 7830	IT II ML 8894	ob4	154°00'30" M			183.93 M		
IS II LT 7830	IT I ML 586558	ob3	347°59'30" M			114.12 M		
IT I ML 586558	IT I LT 7830	ob6	167°25'40" M			69.81 M		
IT I ML 586558	IT VII ML 6065	ob7	82°40'30" M			45.18 M		
IT VII ML 6065	IT I LT 7830	ob10	201°50'20" M			79.61 M		
IT VII ML 6065	IT II ML 8894	ob11	167°58'00" M			244.59 M		
IT VII ML 6065	PEG VIIf ML 586558	ob12	258°53'50" M			6.66 M		
IT VII ML 6065	PEG VIIg ML 586558	ob13	168°53'50" M			30.44 M		
IT VII ML 6065	PEG VIIh ML 586558	ob14	69°31'00" M			22.41 M		
IT II ML 8894	RS 191 SO 8086	ob1	328°07'00" A	DP 382031	0°00'00"	133.15 A	DP 382031	
RS 191 SO 8086	IS II LT 7830	ob25	348°53'50" A	ML 8894	0°00'00"	8.94 A	DP 382031	
IT I LT 7830	IS II ML 6065	ob5	348°53'50" A	LT 7830	0°00'00"	25.29 A	LT 7830	
IS II ML 6065	IS I ML 6065	ob26	348°53'50" A	LT 7830	0°00'00"	41.51 A	LT 7830	
IS I ML 6065	PEG Ia ML 586558	ob27	78°53'50" A	ML 6065	0°00'00"	15.09 A	ML 6065	
PEG Ia ML 586558	PEG VIIf ML 586558	ob30	78°53'50" A	ML 6065	0°00'00"	21.52 A	ML 6065	Class A
PEG VIIg ML 586558	PEG VIIe ML 586558	ob22	168°53'50" A	ML 6065	0°00'00"	11.07 A	ML 6065	Class A
PEG VIIe ML 586558	PEG ML 6065	ob32	258°53'50" A	ML 6065	0°00'00"	28.18 A	ML 6065	
PEG ML 6065	IS II ML 6065	ob33	258°53'50" A	ML 6065	0°00'00"	15.09 A	ML 6065	
IS I ML 6065	IT IV ML 4960	ob28	348°53'50" A	ML 6065	0°00'00"	32.23 A	ML 6065	
IT IV ML 4960	IT IV ML 6065	ob34	77°42'20" A	ML 6065	0°00'00"	65.39 A	ML 6065	
IT IV ML 6065	PEG ML 6065	ob35	168°53'50" A	ML 6065	0°00'00"	13.66 A	ML 6065	
PEG ML 6065	PEG VIIh ML 586558	ob36	168°53'50" A	ML 6065	0°00'00"	16.27 A	ML 6065	
PEG VIIh ML 586558	PEG VIId ML 586558	ob23	168°53'50" A	ML 6065	0°00'00"	45.17 A	ML 6065	
PEG VIId ML 586558	PEG VIIe ML 586558	ob37	258°53'50" A	ML 6065	0°00'00"	22.11 A	ML 6065	Class A
IS I ML 6065	PEG Ib ML 586558	ob29	65°16'20" A	ML 6065	0°00'00"	15.52 A	ML 6065	
IT I ML 586558	PEG Ia ML 586558	ob8	88°54'30" M			17.15 M		
IT I ML 586558	PEG Ib ML 586558	ob9	76°36'30" M			16.90 M		
IT VII ML 6065	PEG VIIa ML 586558	ob15	303°25'00" M			5.21 M		

Mark and Vector

Survey Number ML 586558

Meridional Circuit Poverty Bay 2000

From	To	Code	Bearing	Adpt Surv	Bearing Correction	Distance	Adpt Surv	Class
IT VII ML 6065	PEG VIIb ML 586558	ob16	169°09'30" M			13.05 M		
IT VII ML 6065	PEG VIIc ML 586558	ob17	109°27'00" M			25.67 M		
IT VII ML 6065	PEG VIId ML 586558	ob18	140°51'30" M			47.03 M		
IT VII ML 6065	PEG VIIe ML 586558	ob19	168°53'50" M			41.51 M		
PEG Ia ML 586558	PEG Ib ML 586558	ob31	348°53'50" A	ML 6065	0°00'00"	3.66 A	ML 6065	Class A
PEG Ib ML 586558	PEG VIIa ML 586558	ob38	78°53'50" A	ML 6065	0°00'00"	24.48 C		Class A
PEG VIIa ML 586558	PEG VIIh ML 586558	ob39	78°53'50" A	ML 6065	0°00'00"	25.81 C		Class A
PEG VIIf ML 586558	PEG VIIg ML 586558	ob20	156°33'40" A	ML 6065	0°00'00"	31.16 A	ML 6065	Class A
PEG VIIa ML 586558	UNMK VIIj ML 586558	ob40	156°33'40" C			3.74 C		Class A
UNMK VIIj ML 586558	PEG VIIb ML 586558	ob43	156°33'40" C			13.36 C		Class A
PEG VIIb ML 586558	PEG VIIc ML 586558	ob41	78°53'50" C			22.17 C		Class A
PEG VIIf ML 586558	UNMK VIIj ML 586558	ob21	78°53'50" C			3.74 C		Class A
PEG VIIc ML 586558	PEG VIId ML 586558	ob42	168°53'50" A	ML 6065	0°00'00"	28.47 C		Class A
PEG VIIh ML 586558	PEG VIIc ML 586558	ob24	168°53'50" A	ML 6065	0°00'00"	16.70 C		Class A

Mark Name	Mark Condition	Description
IS II LT 7830		Down 0.2 metres, behind kerb.
IT I LT 7830		Down 0.2 metres, behind kerb.
IT I ML 586558		Galvanised iron tube, down 0.25 metres, in grass berm.
IT II ML 8894		25 millimetre diameter galvanised iron tube, down 0.2 metres, under cast iron survey standard cover, in grass berm.
PEG Ia ML 586558		Plastic Peg.
PEG Ib ML 586558		Plastic Peg.
PEG VIIa ML 586558		Plastic Peg.
PEG VIIb ML 586558		Plastic Peg.
PEG VIIc ML 586558		Plastic Peg.
PEG VIId ML 586558		Plastic Peg.
PEG VIIe ML 586558		Plastic Peg.
PEG VIIf ML 586558		PEG ML 4847 found and renewed. Plastic Peg.



Mark and Vector

Survey Number ML 586558
Meridional Circuit Poverty Bay 2000

Mark Name	Mark Condition	Description
PEG VIIg ML 586558		PEG ML 4847 found and renewed. Plastic Peg.
PEG VIIh ML 586558		PEG ML 6065 found and renewed. Plastic Peg.
RS 191 SO 8086		IS I ML 8894 in position of RS 191 SO 8086.

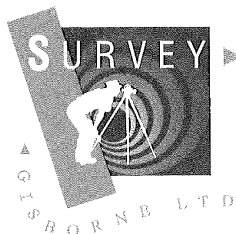
*** End of Report ***

EASEMENT SCHEDULE

Plan Number: ML 586558
Land Registration District: Gisborne
Territory Authority: Gisborne District Council

Schedule of Easement			
Purpose	Shown	Servient Tenement (Burdened Land)	Dominant Tenement (Benefited Land)
Right of Way Right to convey electricity, telecommunications and water	A	Hueatepo 6B	Hueatepo 6A

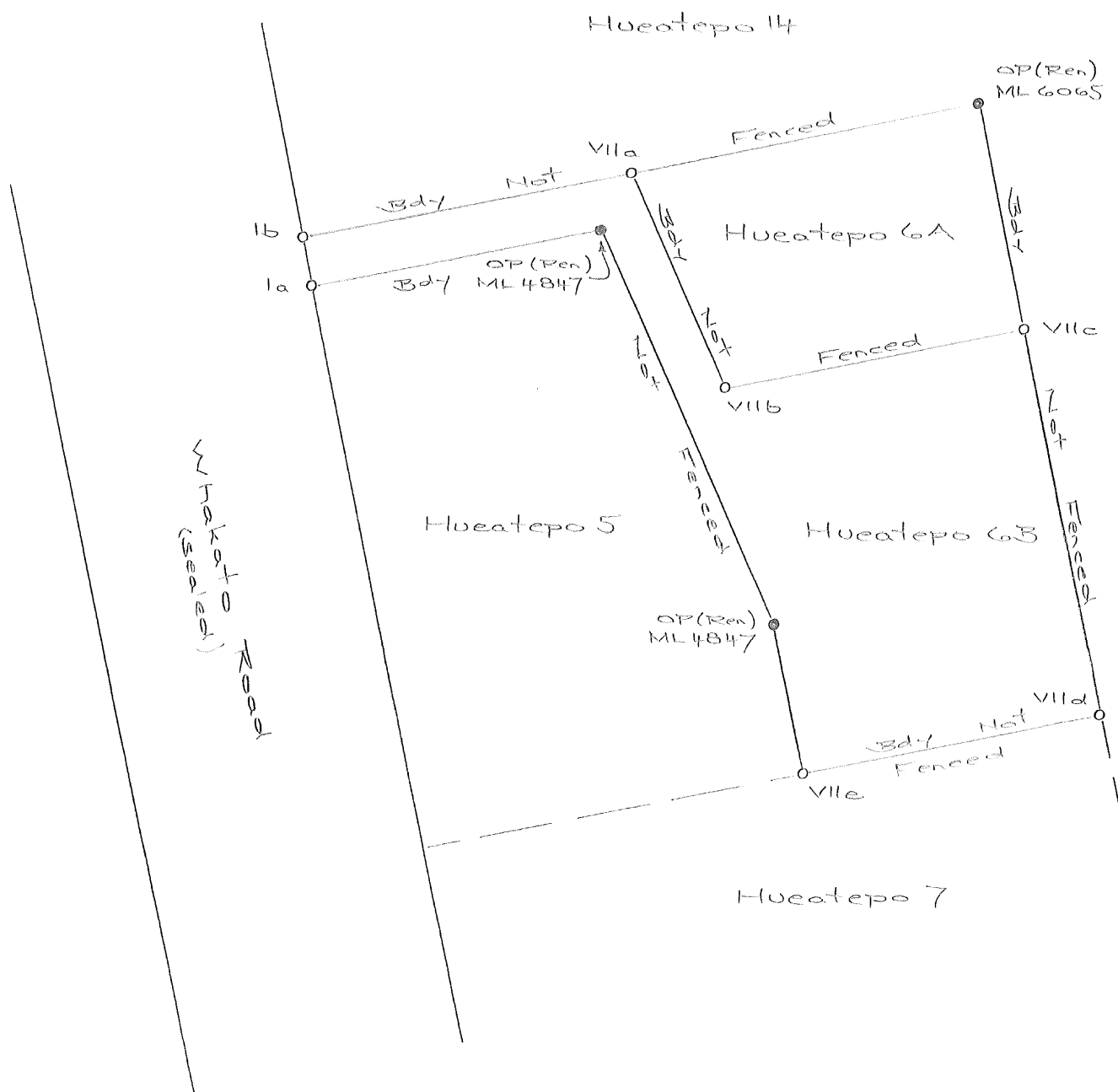
Occupation Diagram



Corner Palmerston Road and Derby Street,
PO Box 440, Gisborne 4040
Email: surveyor@surveygis.co.nz admin@surveygis.co.nz
Office: 06 868 5588
www.surveygis.co.nz



OCCUPATION DIAGRAM



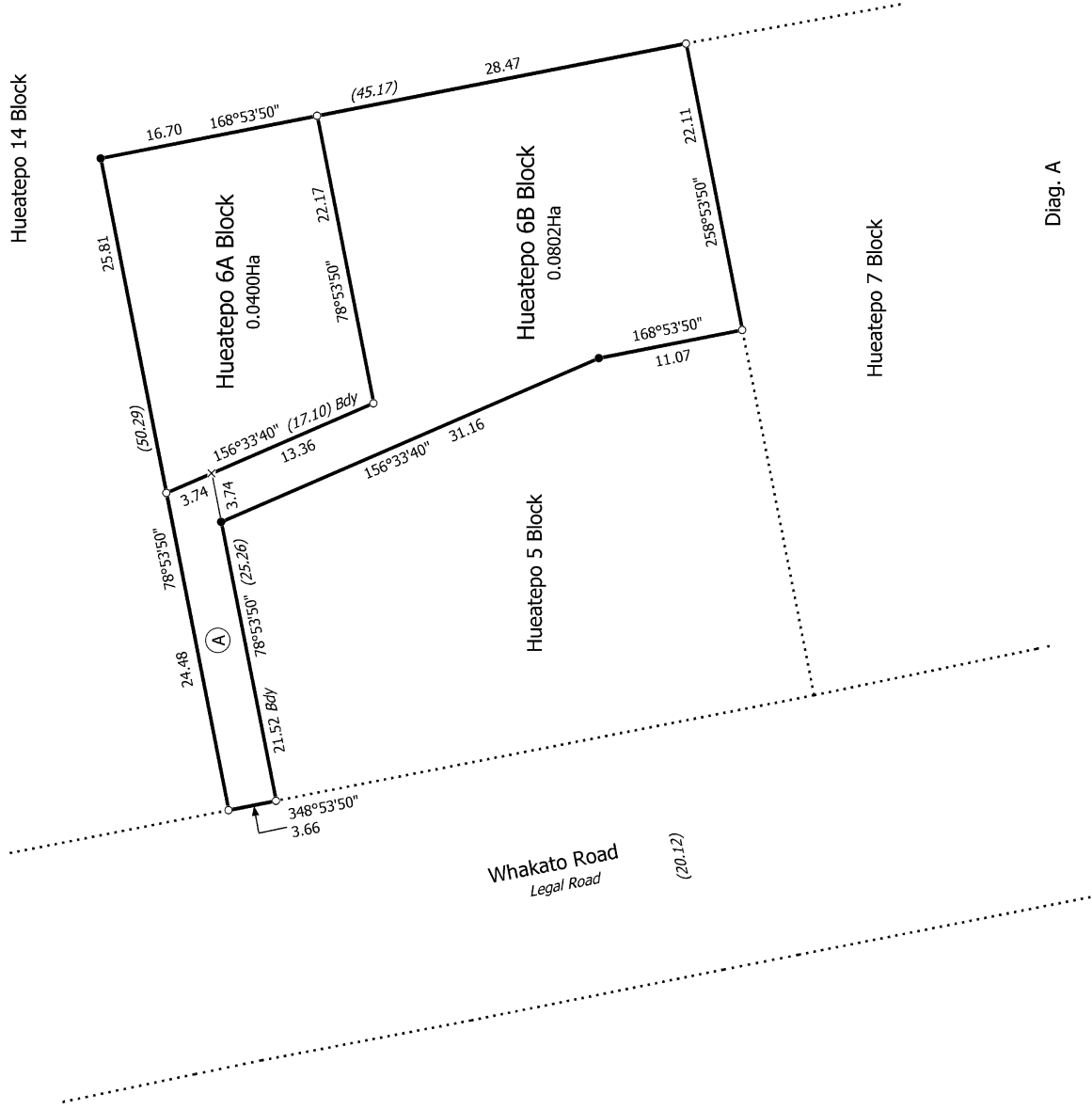
We will professionally work with you through each step to maximise the value and sustainability of your property and investment.



Record of Survey
 ML 586558
 Approved on: 9/02/2023

Surveyor: Kevin John Taylor
 Firm: Survey Gisborne Ltd
 Date of Survey: 19/12/2022

Hueatepo 6A and 6B (Formerly Hueatepo 6)



T 1/1

Hueatepo 6A and 6B (Formerly Hueatepo 6)

Surveyor: Kevin John Taylor
Firm: Survey Gisborne Ltd
Date of Survey: 19/12/2022

Record of Survey
ML 586558
Approved on: 9/02/2023