



Record of Survey - SO 557211

Survey Number SO 557211
Surveyor Reference 1848
Surveyor Michal Falis
Survey Firm Coromandel Surveyors Ltd (Thames)
Surveyor Declaration I Michal Falis, being a licensed cadastral surveyor, certify that--
(a) this dataset provided by me and its related survey are accurate, correct and in accordance with the Cadastral Survey Act 2002 and Cadastral Survey Rules 2021; and
(b) the survey was undertaken by me or under my personal direction.
Declared on 11 Jul 2022 08:10 PM

Survey Details

Dataset Description	Sections 1 to 4	Type	Survey
Purpose	Legalisation	Survey Class	Class B
Status	Approved as to Survey	Vertical Datum	None
Land District	South Auckland		
Meridional Circuit	Mount Eden 2000		

Survey Dates

Surveyed Date	06/05/2021	Certified Date	11/07/2022
Submitted Date	11/07/2022 20:10:55	Survey Approval Date	05/08/2022
Deposit Date			

Referenced Surveys

Survey Number	Land District	Bearing Correction
DP 1201	South Auckland	0°03'00"
DPS 7864	South Auckland	-0°00'30"
SO 11201	South Auckland	0°03'00"
SO 30358	South Auckland	0°03'00"
SO 51279	South Auckland	0°00'00"
DP 320506	South Auckland	0°00'00"
SO 457681	South Auckland	0°00'00"

Territorial Authorities

Thames-Coromandel District

Comprised In

RT 652932

Created Parcels

Parcels	Parcel Intent	Area	RT Reference
Section 1 Survey Office Plan 557211	Legalisation	0.1284 Ha	
Section 2 Survey Office Plan 557211	Legalisation	0.0334 Ha	
Section 3 Survey Office Plan 557211	Fee Simple Title	0.3543 Ha	
Section 4 Survey Office Plan 557211	Legalisation	0.0622 Ha	
Total Area		<u>0.5783 Ha</u>	

Mark and Vector

Survey Number SO 557211
 Meridional Circuit Mount Eden 2000

From	To	Code	Bearing	Adpt Surv	Bearing Correction	Distance	Adpt Surv	Class
LP VII SO 53795	IT 3 DP 320506	ob0	127°54'40"	M		94.72 M		
IT 3 DP 320506	IT 3 SO 457681	ob8	357°12'50"	A SO 457681	0°00'00"	88.91 A SO 457681		
IT 2 SO 457681	LP VII SO 53795	ob11	276°45'00"	M		99.13 M		
IT 2 SO 457681	IS II SO 51279	ob12	96°45'00"	A SO 457681	0°00'00"	9.98 A SO 457681		
LP VII SO 53795	IS IV SO 51279	ob1	97°21'30"	M		67.52 M		
IT 3 SO 457681	PEG 3L SO 457681	ob10	338°41'00"	A SO 457681	0°00'00"	6.49 A SO 457681		
PEG 3L SO 457681	PEG 3H SO 457681	ob20	178°25'00"	A SO 51279	0°00'00"	7.45 A SO 457681		Class B
PEG 3H SO 457681	PEG 3J SO 457681	ob21	178°25'00"	A SO 51279	0°00'00"	17.63 A SO 457681		Class B
PEG 3J SO 457681	PEG 1A SO 457681	ob22	178°25'00"	A SO 51279	0°00'00"	13.21 A SO 457681		Class B
PEG 1A SO 457681	PEG 1F SO 457681	ob23	178°25'00"	A SO 51279	0°00'00"	9.06 A SO 51279		Class B
PEG 1F SO 457681	PEG 1E SO 457681	ob24	178°25'00"	A SO 51279	0°00'00"	1.56 A SO 51279		Class B
PEG SO 51279	PEG 1D SO 457681	ob25	268°23'00"	A SO 51279	0°00'00"	36.68 A SO 51279		Class B
PEG 1D SO 457681	PEG 1E SO 457681	ob26	268°23'00"	A SO 51279	0°00'00"	2.62 A SO 51279		Class B
IT 3 DP 320506	PEG 7A SO 457681	ob9	352°41'00"	A SO 457681	0°00'00"	5.13 A SO 457681		
PEG 7A SO 457681	PEG SO 51279	ob27	358°23'00"	A SO 51279	0°00'00"	3.16 A SO 51279		Class B
PEG SO 51279	PEG SO 51279	ob28	88°23'00"	A SO 51279	0°00'00"	35.80 A SO 51279		Class B
PEG SO 51279	PEG 4 SO 557211	ob29	358°23'00"	A SO 51279	0°00'00"	11.17 C		Class B
PEG 6 SO 557211	UNMK 2 SO 457681	ob30	358°23'00"	A SO 51279	0°00'00"	3.30 A SO 457681		Class B
UNMK 2 SO 457681	PEG SO 51279	ob32	358°23'00"	A SO 51279	0°00'00"	19.65 A SO 457681		Class B
PEG 1 SO 557211	PEG 7A SO 457681	ob58	358°23'00"	A SO 51279	0°00'00"	6.40 C		Class B
PEG XV DP 320506	PEG DPS 7864	ob37	356°17'30"	A DPS 7864	0°00'00"	12.19 A DPS 7864		Class B
PEG DPS 7864	IS V DP 1201	ob38	356°17'30"	A DPS 7864	0°00'00"	5.03 A DPS 7864		Class B
IS V DP 1201	PEG VI DP 1201	ob39	356°17'00"	A DP 1201	0°00'00"	1.81 A DP 1201		Class B
PEG VI DP 1201	PEG SO 51279	ob40	356°17'00"	A SO 30358	0°00'00"	2.21 A SO 30358		Class B
PEG 4B SO 457681	PEG DP 1201	ob53	141°45'00"	A DP 1201	0°00'00"	12.66 A SO 457681		Class B
PEG DP 1201	PEG DPS 7864	ob44	168°02'00"	A DP 1201	0°00'00"	5.87 A DP 1201		Class B
PEG DPS 7864	PEG 4E SO 457681	ob45	208°53'30"	A DPS 7864	0°00'00"	9.29 A SO 457681		Class B
PEG 4E SO 457681	PEG DPS 7864	ob46	208°53'30"	A DPS 7864	0°00'00"	15.16 A SO 457681		Class B

Mark and Vector

Survey Number SO 557211

Meridional Circuit Mount Eden 2000

From	To	Code	Bearing	Adpt Surv	Bearing Correction	Distance	Adpt Surv	Class
PEG DPS 7864	POST DPS 7864	ob47	176°16'30"	A DPS 7864	0°00'00"	47.91 A	DPS 7864	Class B
POST DPS 7864	PEG DPS 7864	ob48	265°31'30"	A DPS 7864	0°00'00"	4.93 A	DPS 7864	Class B
PEG DPS 7864	PEG DPS 7864	ob49	355°47'30"	A DPS 7864	0°00'00"	47.93 A	DPS 7864	Class B
PEG DPS 7864	PEG 4 DP 320506	ob50	265°49'30"	A DPS 7864	-0°00'30"	40.23 A	DP 320506	Class B
PEG 4 DP 320506	PEG 5 DP 320506	ob51	265°49'30"	A DPS 7864	-0°00'30"	12.64 A	DP 320506	Class B
PEG 5 DP 320506	PEG XV DP 320506	ob52	265°49'30"	A DPS 7864	-0°00'30"	14.78 A	DP 320506	Class B
IT 4 SO 457681	PEG 4A SO 457681	ob18	324°01'00"	A SO 457681	0°00'00"	6.07 A	SO 457681	
PEG 4A SO 457681	UNMK 9 SO 557211	ob34	321°45'00"	A DP 1201	0°03'00"	25.25 C		Class B
UNMK 9 SO 557211	PEG III SO 11201	ob57	321°45'00"	A DP 1201	0°00'00"	29.40 C		Class B
PEG III SO 11201	PEG 3N SO 457681	ob41	307°24'00"	A SO 11201	0°00'00"	35.06 A	SO 11201	Class B
PEG 3N SO 457681	PEG 3M SO 457681	ob42	287°13'00"	A SO 11201	0°00'00"	13.08 A	SO 11201	Class B
PEG 3M SO 457681	PEG 3L SO 457681	ob43	253°01'00"	A SO 51279	0°00'00"	2.67 A	SO 51279	Class B
PEG 4A SO 457681	PEG 4B SO 457681	ob35	141°45'00"	A DP 1201	0°00'00"	10.38 A	SO 457681	Class B
PEG 6 SO 557211	Peg 5 SO 557211	ob31	88°29'00"	C		2.10 C		Class B
Peg 5 SO 557211	Peg 7 SO 557211	ob36	358°23'00"	C		22.71 C		Class B
Peg 7 SO 557211	PEG 2F SO 457681	ob56	88°23'00"	C		2.60 C		Class B
PEG 8 SO 557211	UNMK 9 SO 557211	ob75	88°23'00"	C		7.04 C		Class B
IT 2 SO 457681	PEG 8 SO 557211	ob13	88°23'00"	M		23.67 M		
IT 2 SO 457681	Peg 7 SO 557211	ob14	88°24'00"	M		12.37 M		
IT 2 SO 457681	PEG 2F SO 457681	ob15	88°24'00"	M		14.97 M		
PEG SO 51279	PEG 1 SO 557211	ob33	358°23'00"	A SO 51279	0°00'00"	0.44 C		Class B
PEG 1 SO 557211	PEG 2 SO 557211	ob59	84°53'00"	C		37.83 C		Class B
PEG 2 SO 557211	PEG 3 SO 557211	ob60	356°46'00"	C		18.51 C		Class B
PEG 3 SO 557211	PEG 4 SO 557211	ob61	264°55'00"	C		1.45 C		Class B
PEG 4 SO 557211	PEG 6 SO 557211	ob62	358°23'00"	A SO 51279	0°00'00"	3.70 C		Class B
PEG 3F SO 457681	PEG 3E SO 457681	ob63	314°21'00"	A SO 457681	0°00'00"	4.82 A	SO 457681	Class B

Mark and Vector

Survey Number SO 557211

Meridional Circuit Mount Eden 2000

From	To	Code	Bearing	Adpt Surv	Bearing Correction	Distance	Adpt Surv	Class
PEG 3E SO 457681	PEG 3D SO 457681	ob64	303°19'00"	A SO 457681	0°00'00"	2.86 A	SO 457681	Class B
PEG 3D SO 457681	PEG 3C SO 457681	ob65	295°06'00"	A SO 457681	0°00'00"	4.17 A	SO 457681	Class B
PEG 3G SO 457681	PEG 3H SO 457681	ob67	224°10'00"	A SO 457681	0°00'00"	3.60 A	SO 457681	Class B
PEG 3C SO 457681	PEG 3B SO 457681	ob66	278°37'00"	A SO 457681	0°00'00"	2.69 A	SO 457681	Class B
PEG 3B SO 457681	PEG 3A SO 457681	ob68	252°31'00"	A SO 457681	0°00'00"	2.33 A	SO 457681	Class B
PEG 3A SO 457681	PEG 3G SO 457681	ob69	227°09'00"	A SO 457681	0°00'00"	1.92 A	SO 457681	Class B
PEG 2B SO 457681	PEG 2A SO 457681	ob70	341°01'00"	A SO 457681	0°00'00"	3.21 A	SO 457681	Class B
PEG 2C SO 457681	PEG 2B SO 457681	ob72	336°45'00"	A SO 457681	0°00'00"	5.91 A	SO 457681	Class B
PEG 2D SO 457681	PEG 2C SO 457681	ob73	326°17'00"	A SO 457681	0°00'00"	4.67 A	SO 457681	Class B
PEG 2A SO 457681	PEG 3F SO 457681	ob71	314°44'00"	A SO 457681	0°00'00"	1.74 A	SO 457681	Class B
PEG 2E SO 457681	PEG 2D SO 457681	ob74	322°19'00"	A SO 457681	0°00'00"	22.36 A	SO 457681	Class B
PEG 2F SO 457681	PEG 2E SO 457681	ob55	318°35'00"	A SO 457681	0°00'00"	8.87 A	SO 457681	Class B
IS II SO 51279	IT 4 SO 457681	ob16	119°34'00"	A SO 457681	0°00'00"	45.96 A	SO 457681	
IT 3 DP 320506	PEG 1 SO 557211	ob2	199°49'00"	M		1.39 M		
IT 3 DP 320506	PEG 2 SO 557211	ob3	86°49'00"	M		37.27 M		
IT 3 DP 320506	PEG 3 SO 557211	ob4	60°23'00"	M		41.60 M		
IT 3 DP 320506	PEG 4 SO 557211	ob5	59°32'00"	M		40.29 M		
IT 3 DP 320506	Peg 5 SO 557211	ob6	56°38'00"	M		43.97 M		
IT 3 DP 320506	PEG 6 SO 557211	ob7	55°07'00"	M		42.20 M		
PEG 2F SO 457681	PEG 8 SO 557211	ob54	88°23'00"	C		8.70 C		Class B
IS II SO 51279	IS IV SO 51279	ob17	275°45'00"	A SO 457681	0°00'00"	41.60 A	SO 457681	
IS IV SO 51279	IT 3 DP 320506	ob19	171°05'40"	M		50.15 M		

Mark Name	Mark Condition	Description
IS IV SO 51279		0.2 down, in grass
IT 2 SO 457681		Flush in seal
IT 3 SO 457681		In grass, 0.1 down, 2.1 to conc. PP, 1.25 to fce.
LP VII SO 53795		Lead Plug in bridge.



Mark and Vector

Survey Number SO 557211
Meridional Circuit Mount Eden 2000

Mark Name	Mark Condition	Description
PEG 2F SO 457681		at edge of concrete mowing strip at base of flood detention wall.
PEG 8 SO 557211		in top of bank

***** End of Report *****

Land Registration District

South Auckland

Plan Number

SO 557211

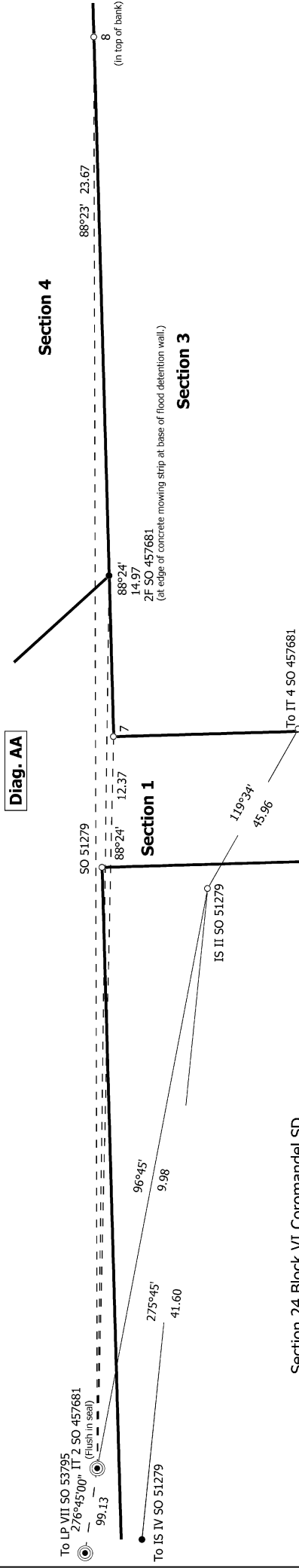
Territorial Authority (the Council)

Thames Coromandel District Council

SCHEDULE OF AREAS

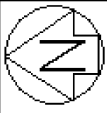
Land to be acquired for Recreation Reserve

<u>Shown</u>	<u>Description</u>	<u>Estate Record</u>	<u>Area</u>
Section 1	Section 2 SO 457681, Section 3 SO 457681, Pt Section 4 SO 457681, Pt Section 5 SO 457681.	RT 652932	0.1284 ha
Section 2	Pt Section 1 SO 457681, Pt Section 5 SO 457681.	RT 652932	0.0334 ha
Section 4	Pt Section 4 SO 457681, Pt Section 5 SO 457681.	RT 652932	0.0622 ha



S 2/2

<p>Land District: South Auckland</p> <p>Digitally Generated Plan</p> <p>Generated on: 05/08/2022 3:59pm Page 9 of 11</p>	<p>Sections 1 to 4</p>	<p>Surveyor: Michal Falls</p> <p>Firm: Coromandel Surveyors Ltd (Thames)</p> <p>Date of Survey: 6/05/2021</p>	<p>Record of Survey</p> <p>SO 557211</p> <p>Approved on: 5/08/2022</p>
---	------------------------	---	--



Torotepeka

Karaka Stream

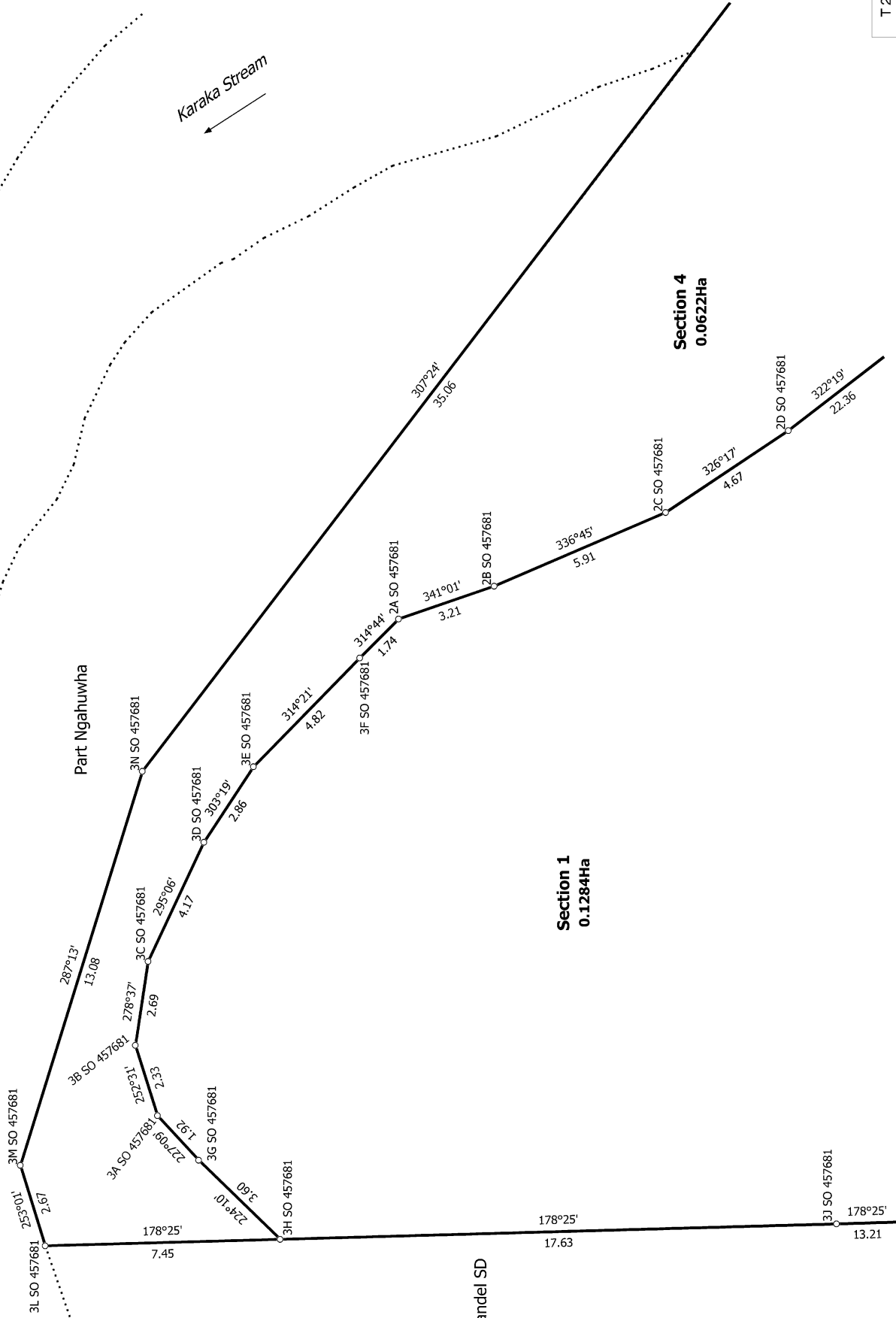
Diag. AA

Part Ngahuwha

Section 1
0.1284Ha

Section 4
0.0622Ha

Section 24 Block VI Coromandel SD



T 2/2

Record of Survey
SO 557211
Approved on: 5/08/2022

Surveyor: Michal Falls
Firm: Coromandel Surveyors Ltd (Thames)
Date of Survey: 6/05/2021

Sections 1 to 4

Land District: South Auckland
Digitally Generated Plan
Generated on: 05/08/2022 3:59pm Page 11 of 11