



Record of Survey - SO 574979

Survey Number SO 574979
Surveyor Reference S57
Surveyor John Douglas William Batt
Survey Firm Tasman Gowland Surveyors Ltd
Surveyor Declaration I John Douglas William Batt, being a licensed cadastral surveyor, certify that--
(a) this dataset provided by me and its related survey are accurate, correct and in accordance with the Cadastral Survey Act 2002 and Cadastral Survey Rules 2021; and
(b) the survey was undertaken by me or under my personal direction.
Declared on 21 Jun 2022 03:19 PM

Survey Details

Dataset Description	Sections 1 & 2	Type	Survey
Purpose	Legalisation	Survey Class	Class B
Status	Approved as to Survey	Vertical Datum	None
Land District	Nelson		
Meridional Circuit	Nelson 2000		

Survey Dates

Surveyed Date	23/03/2022	Certified Date	21/06/2022
Submitted Date	21/06/2022 15:19:38	Survey Approval Date	23/06/2022
Deposit Date			

Referenced Surveys

Survey Number	Land District	Bearing Correction
SO 568769	Nelson	0°00'00"
DP 17818	Nelson	0°00'00"
SO 14116	Nelson	0°00'00"
DP 376808	Nelson	0°00'00"

Territorial Authorities

Tasman District

Comprised In

RT 322566

Created Parcels

Parcels	Parcel Intent	Area	RT Reference
Section 1 Survey Office Plan 574979	Legalisation	0.1191 Ha	
Section 2 Survey Office Plan 574979	Fee Simple Title	12.2494 Ha	
Area A Survey Office Plan 574979	Easement		
Area B Survey Office Plan 574979	Easement		
Total Area		12.3685 Ha	

Mark and Vector

Survey Number SO 574979
Meridional Circuit Nelson 2000

From	To	Code	Bearing	Adpt Surv	Bearing Correction	Distance	Adpt Surv	Class
ND 82	IT VIII SO 14116	ob4	318°09'10" M			850.88 M		
ND 82	AP 1 SO 574979	ob5	327°05'05" M			877.25 M		
ND 82	AP 2 SO 574979	ob6	327°56'35" M			910.99 M		
ND 82	NAIL 3 SO 574979	ob7	326°46'20" M			938.92 M		
AP 1 SO 574979	AP 2 SO 574979	ob11	349°09'00" M			36.29 M		
AP 2 SO 574979	NAIL 3 SO 574979	ob14	293°16'00" M			33.73 M		
IT IX SO 14116	IB XXIII DP 17818	ob95	311°49'50" A	DP 17818	0°00'00"	11.04 A	DP 17818	
IT IX SO 14116	PEG (51) DP 17818	ob96	93°45'00" A	DP 17818	0°00'00"	5.61 A	DP 17818	
IT IX SO 14116	PEG (1) DP 17818	ob97	334°50'00" A	DP 17818	0°00'00"	73.97 A	DP 17818	
IB XXIII DP 17818	PEG (310) DP 17818	ob18	41°52'00" A	DP 17818	0°00'00"	37.01 A	DP 17818	
PEG (310) DP 17818	PEG (51) DP 17818	ob23	197°08'00" A	DP 17818	0°00'00"	36.93 A	DP 17818	Class B
PEG (51) DP 17818	PEG (87) DP 17818	ob19	197°08'00" A	DP 17818	0°00'00"	9.00 A	DP 17818	Class B
PEG (1) DP 17818	PEG (310) DP 17818	ob21	123°45'00" A	DP 17818	0°00'00"	57.65 A	DP 17818	Class B
AP 1 SO 574979	IB I DP 17818	ob12	117°19'00" M			40.17 M		
PEG (1) DP 17818	UNMK 10 SO 574979	ob22	12°49'00" A	DP 17818	0°00'00"	20.00 C		Class B
UNMK 10 SO 574979	PEG (2) DP 17818	ob30	12°49'00" A	DP 17818	0°00'00"	203.63 C		Class B
PEG (2) DP 17818	PEG (4) DP 17818	ob24	12°24'00" A	DP 17818	0°00'00"	153.70 A	DP 17818	Class B
PEG (4) DP 17818	IB XX DP 17818	ob25	70°02'00" A	DP 17818	0°00'00"	18.22 A	DP 17818	
IB XX DP 17818	IB XIX DP 17818	ob27	121°19'30" A	DP 17818	0°00'00"	82.01 A	DP 17818	
IB XIX DP 17818	IB XXI DP 17818	ob28	204°38'25" A	DP 17818	0°00'00"	594.11 A	DP 17818	
IB XXI DP 17818	IT VIII SO 14116	ob29	10°34'10" A	DP 17818	0°00'00"	36.34 A	DP 17818	
UNMK 10 SO 574979	PEG 11 SO 574979	ob31	116°20'00" C			48.53 C		Class B
PEG 11 SO 574979	PEG (310) DP 17818	ob32	180°00'00" C			30.00 C		Class B
AP 2 SO 574979	UNMK 10 SO 574979	ob15	351°02'40" C			54.44 C		
AP 2 SO 574979	PEG 11 SO 574979	ob16	47°21'00" M			47.61 M		

Mark and Vector

Survey Number SO 574979

Meridional Circuit Nelson 2000

From	To	Code	Bearing	Adpt Surv	Bearing Correction	Distance	Adpt Surv	Class
PEG (4) DP 17818	PEG (50) DP 17818	ob26	124°39'00"	A DP 17818	0°00'00"	15.39 A	DP 17818	Class B
PEG (50) DP 17818	PEG (21) DP 17818	ob33	104°21'00"	A DP 17818	0°00'00"	83.78 A	DP 17818	Class B
PEG (21) DP 17818	UNMK 39 DP 376808	ob34	114°47'00"	A DP 17818	0°00'00"	109.43 A	DP 376808	Class B
UNMK 39 DP 376808	UNMK 40 DP 376808	ob35	114°47'00"	A DP 17818	0°00'00"	19.67 A	DP 376808	Class B
UNMK 40 DP 376808	PEG (11) DP 17818	ob37	114°47'00"	A DP 17818	0°00'00"	9.57 A	DP 376808	Class B
PEG (11) DP 17818	PEG (12) DP 17818	ob39	106°26'00"	A DP 17818	0°00'00"	41.36 A	DP 17818	Class B
PEG (12) DP 17818	PEG 3 DP 376808	ob40	154°01'00"	A DP 376808	0°00'00"	30.69 A	DP 376808	Class B
PEG 3 DP 376808	PEG 2 DP 376808	ob41	228°47'00"	A DP 376808	0°00'00"	35.56 A	DP 376808	Class B
PEG 2 DP 376808	UNMK 41 DP 376808	ob42	181°55'00"	A DP 376808	0°00'00"	39.42 A	DP 376808	Class B
UNMK 41 DP 376808	PEG 1 DP 376808	ob44	181°55'00"	A DP 376808	0°00'00"	4.49 A	DP 376808	Class B
PEG 1 DP 376808	PEG (3) DP 17818	ob45	156°10'00"	A DP 376808	0°00'00"	217.86 A	DP 376808	Class B
PEG (3) DP 17818	PEG (13) DP 17818	ob46	302°19'00"	A DP 17818	0°00'00"	23.05 A	DP 17818	Class B
PEG (13) DP 17818	PEG (18) DP 17818	ob47	302°19'00"	A DP 17818	0°00'00"	81.06 A	DP 17818	Class B
PEG (18) DP 17818	PEG (16) DP 17818	ob48	258°09'00"	A DP 17818	0°00'00"	37.36 A	DP 17818	Class B
PEG (16) DP 17818	PEG (17) DP 17818	ob49	174°51'00"	A DP 17818	0°00'00"	40.82 A	DP 17818	Class B
PEG (17) DP 17818	PEG (14) DP 17818	ob50	258°52'00"	A DP 17818	0°00'00"	50.14 A	DP 17818	Class B
PEG (14) DP 17818	PEG (24) DP 17818	ob51	293°28'00"	A DP 17818	0°00'00"	41.40 A	DP 17818	Class B
PEG (24) DP 17818	PEG (19) DP 17818	ob52	255°22'00"	A DP 17818	0°00'00"	15.55 A	DP 17818	Class B
PEG (19) DP 17818	PEG (20) DP 17818	ob53	264°37'00"	A DP 17818	0°00'00"	17.57 A	DP 17818	Class B
PEG (20) DP 17818	PEG (15) DP 17818	ob54	232°55'00"	A DP 17818	0°00'00"	24.22 A	DP 17818	Class B
PEG (15) DP 17818	PEG (22) DP 17818	ob55	187°43'00"	A DP 17818	0°00'00"	41.90 A	DP 17818	Class B
PEG (22) DP 17818	PEG (23) DP 17818	ob56	162°53'00"	A DP 17818	0°00'00"	29.53 A	DP 17818	Class B
PEG (23) DP 17818	PEG (30) DP 17818	ob57	144°24'00"	A DP 17818	0°00'00"	62.34 A	DP 17818	Class B
PEG (30) DP 17818	PEG (25) DP 17818	ob58	225°08'00"	A DP 17818	0°00'00"	30.83 A	DP 17818	Class B

Mark and Vector

Survey Number SO 574979

Meridional Circuit Nelson 2000

From	To	Code	Bearing	Adpt Surv	Bearing Correction	Distance	Adpt Surv	Class
PEG (25) DP 17818	PEG (26) DP 17818	ob59	286°09'00"	A DP 17818	0°00'00"	42.69 A	DP 17818	Class B
PEG (26) DP 17818	PEG (29) DP 17818	ob60	279°08'00"	A DP 17818	0°00'00"	67.52 A	DP 17818	Class B
PEG (29) DP 17818	PEG (47) DP 17818	ob61	265°46'00"	A DP 17818	0°00'00"	11.67 A	DP 17818	Class B
PEG (47) DP 17818	PEG (37) DP 17818	ob62	286°32'00"	A DP 17818	0°00'00"	17.68 A	DP 17818	Class B
PEG (37) DP 17818	PEG (28) DP 17818	ob63	329°44'00"	A DP 17818	0°00'00"	27.69 A	DP 17818	Class B
PEG (28) DP 17818	PEG (32) DP 17818	ob64	357°35'00"	A DP 17818	0°00'00"	12.82 A	DP 17818	Class B
PEG (32) DP 17818	PEG (33) DP 17818	ob65	42°56'00"	A DP 17818	0°00'00"	13.80 A	DP 17818	Class B
PEG (33) DP 17818	PEG (34) DP 17818	ob66	63°40'00"	A DP 17818	0°00'00"	20.83 A	DP 17818	Class B
PEG (34) DP 17818	PEG (87) DP 17818	ob67	312°57'00"	A DP 17818	0°00'00"	21.65 A	DP 17818	Class B
PEG (51) DP 17818	PEG (27) DP 17818	ob20	123°44'00"	A DP 17818	0°00'00"	28.40 A	DP 17818	Class B
PEG (27) DP 17818	PEG (35) DP 17818	ob68	180°33'00"	A DP 17818	0°00'00"	16.55 A	DP 17818	Class B
PEG (35) DP 17818	PEG (31) DP 17818	ob69	247°42'00"	A DP 17818	0°00'00"	27.51 A	DP 17818	Class B
PEG (31) DP 17818	PEG (36) DP 17818	ob70	171°07'00"	A DP 17818	0°00'00"	24.61 A	DP 17818	Class B
PEG (36) DP 17818	PEG (43) DP 17818	ob71	100°45'00"	A DP 17818	0°00'00"	96.35 A	DP 17818	Class B
PEG (43) DP 17818	PEG (44) DP 17818	ob72	100°54'00"	A DP 17818	0°00'00"	41.85 A	DP 17818	Class B
PEG (44) DP 17818	PEG (39) DP 17818	ob73	32°31'00"	A DP 17818	0°00'00"	12.10 A	DP 17818	Class B
PEG (39) DP 17818	PEG (42) DP 17818	ob74	323°52'00"	A DP 17818	0°00'00"	55.54 A	DP 17818	Class B
PEG (42) DP 17818	PEG (7) DP 17818	ob75	342°26'00"	A DP 17818	0°00'00"	33.26 A	DP 17818	Class B
PEG (7) DP 17818	PEG (8) DP 17818	ob76	9°56'00"	A DP 17818	0°00'00"	49.87 A	DP 17818	Class B
PEG (8) DP 17818	PEG (9) DP 17818	ob77	56°17'00"	A DP 17818	0°00'00"	31.32 A	DP 17818	Class B
PEG (9) DP 17818	PEG (38) DP 17818	ob78	80°52'00"	A DP 17818	0°00'00"	36.96 A	DP 17818	Class B
PEG (38) DP 17818	PEG (45) DP 17818	ob79	112°44'00"	A DP 17818	0°00'00"	40.95 A	DP 17818	Class B
PEG (45) DP 17818	PEG (46) DP 17818	ob80	77°18'00"	A DP 17818	0°00'00"	24.20 A	DP 17818	Class B
PEG (46) DP 17818	PEG (49) DP 17818	ob81	57°13'00"	A DP 17818	0°00'00"	6.05 A	DP 17818	Class B

Mark and Vector

Survey Number SO 574979

Meridional Circuit Nelson 2000

From	To	Code	Bearing	Adpt Surv	Bearing Correction	Distance	Adpt Surv	Class
PEG (49) DP 17818	PEG (40) DP 17818	ob82	9°00'00"	A DP 17818	0°00'00"	36.88 A	DP 17818	Class B
PEG (40) DP 17818	PEG (41) DP 17818	ob83	56°37'00"	A DP 17818	0°00'00"	14.49 A	DP 17818	Class B
PEG (41) DP 17818	PEG (48) DP 17818	ob84	85°29'00"	A DP 17818	0°00'00"	22.22 A	DP 17818	Class B
PEG (48) DP 17818	PEG (18) DP 17818	ob85	123°04'00"	A DP 17818	0°00'00"	13.60 A	DP 17818	Class B
UNMK 40 DP 376808	UNMK 45 DP 376808	ob38	123°32'30"	A DP 376808	0°00'00"	54.62 A	DP 376808	Class B
UNMK 45 DP 376808	PEG 2 DP 376808	ob86	195°59'00"	A DP 376808	0°00'00"	38.00 A	DP 376808	Class B
PEG 2 DP 376808	UNMK 46 DP 376808	ob43	195°59'00"	A DP 376808	0°00'00"	31.77 A	DP 376808	Class B
UNMK 46 DP 376808	UNMK 41 DP 376808	ob87	140°00'00"	A DP 376808	0°00'00"	11.56 A	DP 376808	Class B
UNMK 39 DP 376808	UNMK 44 DP 376808	ob36	123°32'30"	A DP 376808	0°00'00"	71.86 A	DP 376808	Class B
UNMK 44 DP 376808	UNMK 43 DP 376808	ob88	195°59'00"	A DP 376808	0°00'00"	69.17 A	DP 376808	Class B
UNMK 43 DP 376808	PEG 1 DP 376808	ob89	140°00'00"	A DP 376808	0°00'00"	16.50 A	DP 376808	Class B
IT VIII SO 14116	IT 2 SO 568769	ob8	223°30'00"	A SO 568769	0°00'00"	20.83 A	SO 568769	
IT 2 SO 568769	IT 5 SO 568769	ob90	1°28'00"	A SO 568769	0°00'00"	196.05 A	SO 568769	
IT 5 SO 568769	IR 4 SO 568769	ob91	115°19'30"	A SO 568769	0°00'00"	76.79 A	SO 568769	
IR 4 SO 568769	IT 3 SO 568769	ob92	155°10'30"	A SO 568769	0°00'00"	91.79 A	SO 568769	
IT 3 SO 568769	IB I DP 17818	ob93	55°19'00"	A SO 568769	0°00'00"	34.12 A	SO 568769	
IB I DP 17818	IT IX SO 14116	ob17	311°49'50"	A DP 17818	0°00'00"	32.15 A	DP 17818	
IT IX SO 14116	IT VIII SO 14116	ob94	224°12'20"	A SO 14116	0°00'00"	147.30 A	SO 14116	
ND 82	IT 3 SO 568769	ob3	326°07'20"	M		841.44 M		
ND 82	IR 4 SO 568769	ob0	327°00'30"	M		932.19 M		
ND 82	IT 2 SO 568769	ob1	316°45'10"	M		849.46 M		
ND 82	IT 5 SO 568769	ob2	324°41'40"	M		998.35 M		
AP 2 SO 574979	IR 4 SO 568769	ob13	292°06'00"	M		26.00 M		
AP 1 SO 574979	PEG (51) DP 17818	ob9	81°20'00"	M		17.50 M		
AP 1 SO 574979	NAIL 3 SO 574979	ob10	322°18'00"	M		61.89 M		

Mark Name	Mark Condition	Description
AP 1 SO 574979		Alloy Pin & Disk on top Concrete Retaining Wall
AP 2 SO 574979		Alloy Pin & Disk on top Concrete Retaining Wall
IB I DP 17818		Down 0.2 on edge of road

Mark and Vector

Survey Number SO 574979
Meridional Circuit Nelson 2000

Mark Name	Mark Condition	Description
IT VIII SO 14116		Down 0.2
ND 82		On the south side of SH 60 approx 1.1 km west from the Riwaka Valley turnoff.
PEG (51) DP 17818		Old Peg in good condition
UNMK 10 SO 574979		Unable to Peg. Position at base of tree.

***** End of Report *****

Schedule / Memorandum

Land Registration District

Nelson

Survey Number

SO 574979

Territorial Authority (the Council)

Tasman District

Schedule of Existing Easements

Last Edited: 21 Apr 2022 09:13:56

<u>Purpose</u>	<u>Shown</u>	<u>Burdened Land</u> <u>(Servient Tenement)</u>	<u>Creating Document Reference</u>
Right of Way	A	Sect 2	EC 364198.4
Right to convey water	B	Sect 2	EI 7289462.2
Right to convey telecommunications and computer media	A	Sect 2	EC 364198.4
Right to convey electricity	A	Sect 2	EC 364198.4

Land Registration District

NELSON

Plan Number

SO 574979

Territorial Authority (the Council)

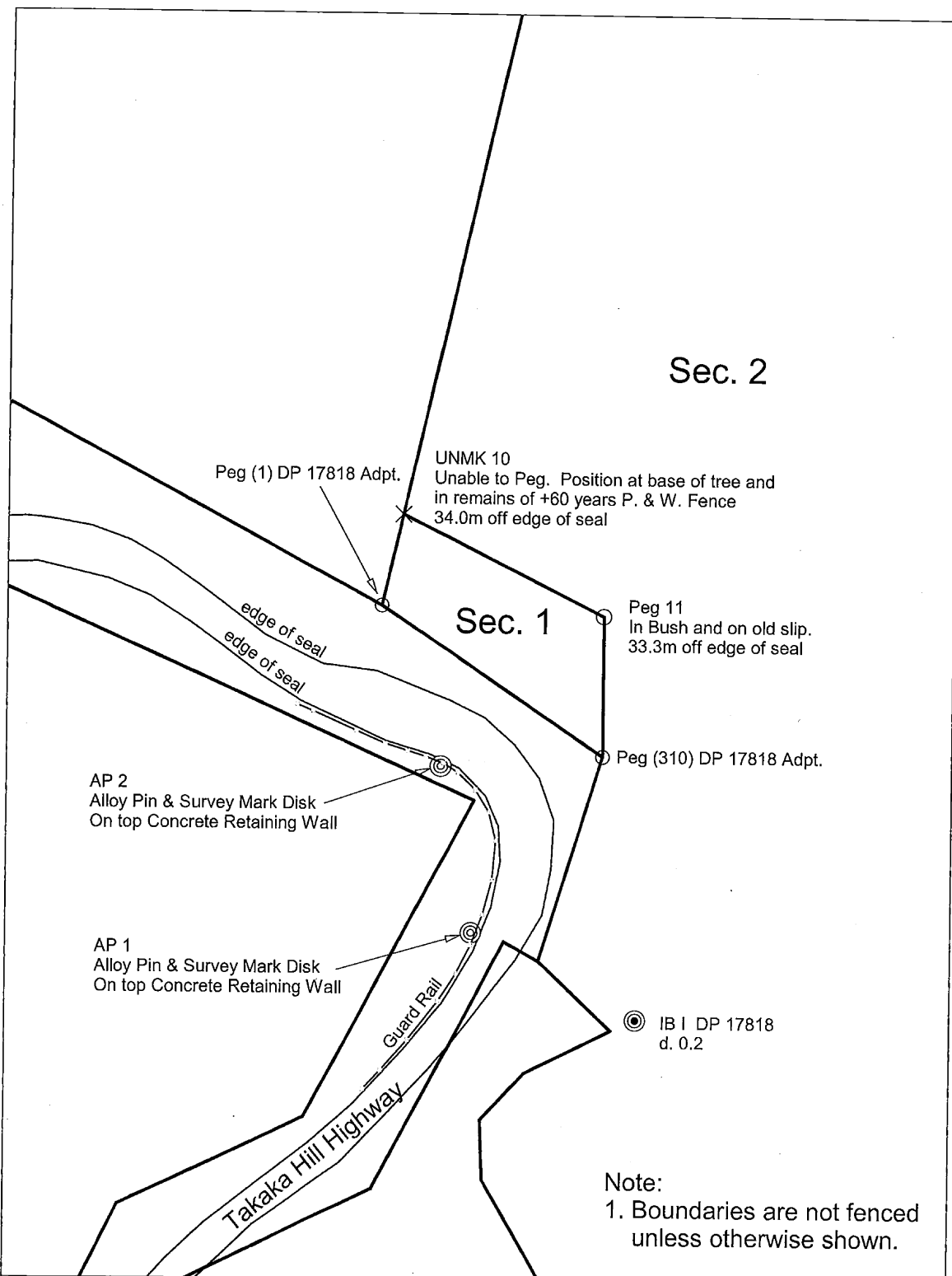
Tasman District

Schedule of Areas

Land to be Acquired for Road			
Shown	Description	Title Reference	Area
Section 1	Lot 1 DP 376808	322566	0.1191 Ha.

Balance Parcels			
Shown	Description	Title Reference	Area
Section 2	Lot 1 DP 376808	322566	12.2494 Ha.

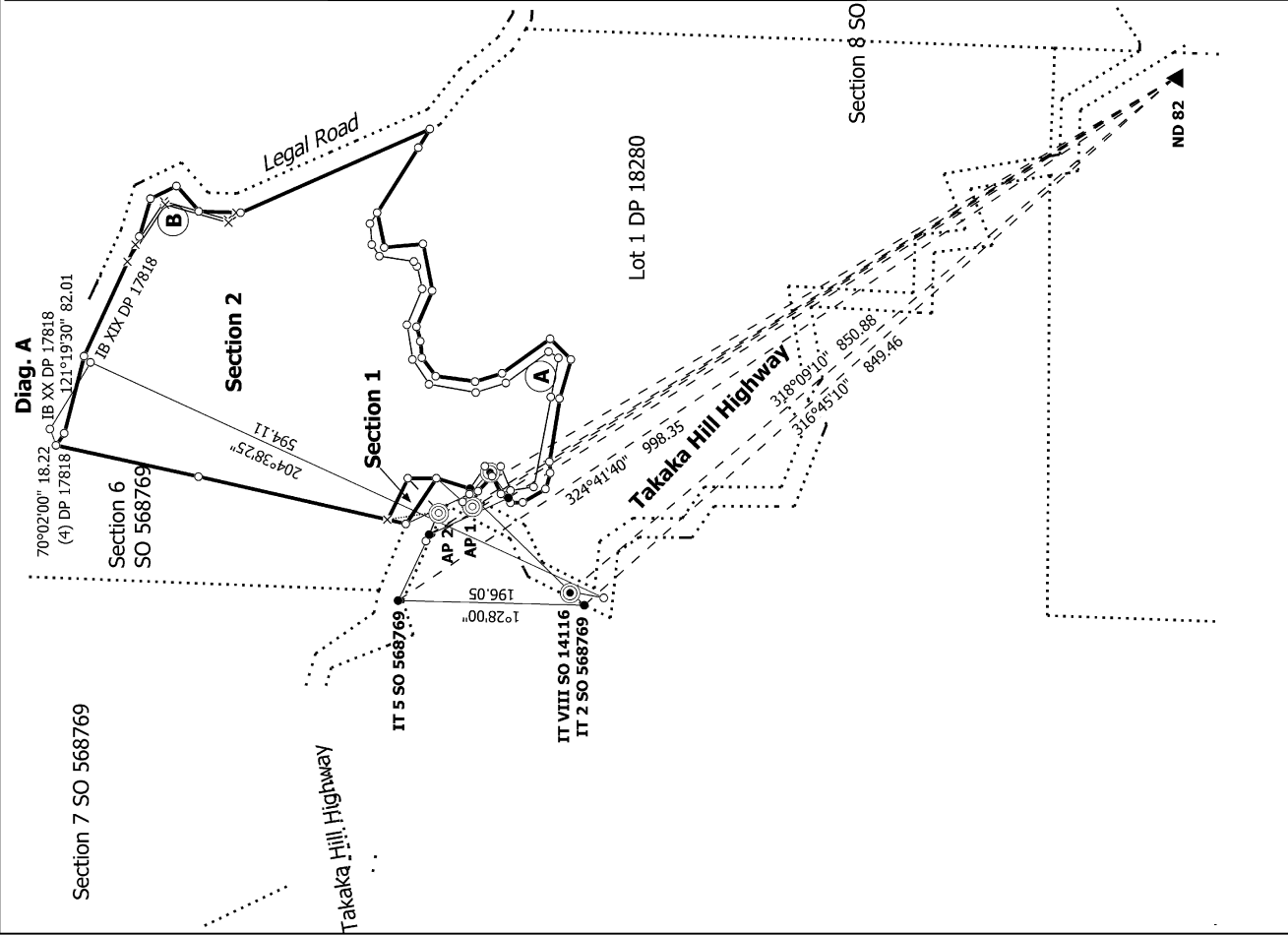
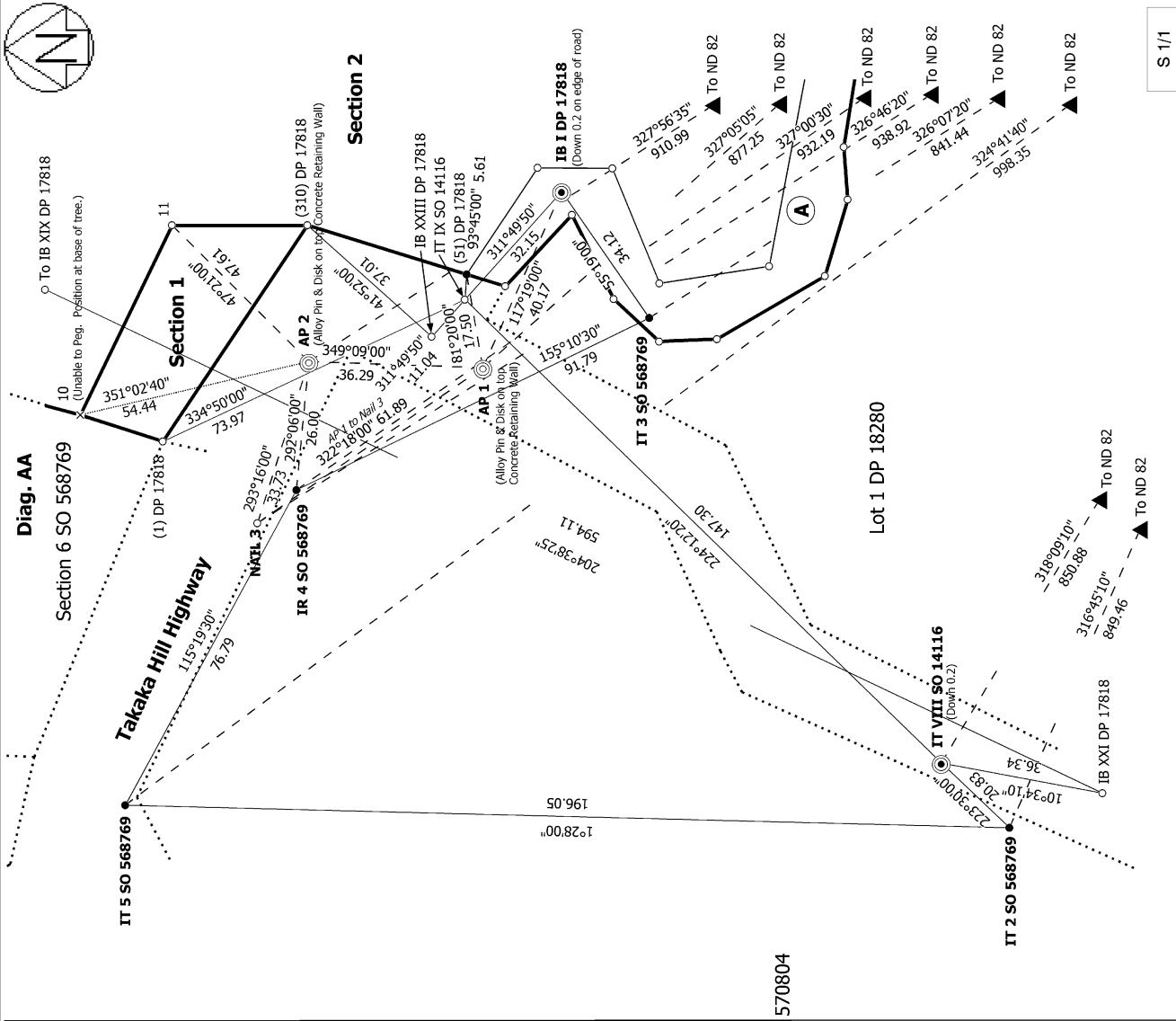
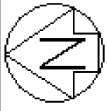
Occupation Diagram



<p>Client: NZTA</p> <p>TASMAN GOWLAND SURVEYORS 207a Queen St, RICHMOND Phone 03 544 1126</p>	<p>Drawing Title: SO 574979 Occupation Diagram</p> <p>Project: Takaka Hill SH60 Slips</p>		<table border="1" style="width: 100%; border-collapse: collapse;"> <tr><td>Job No:</td><td>857</td></tr> <tr><td>Surveyed by:</td><td>John Batt</td></tr> <tr><td>Checked by:</td><td></td></tr> <tr><td>Height Datum:</td><td></td></tr> <tr><td>Coord Datum:</td><td>Nelson 2000</td></tr> <tr><td>Scale:</td><td>@ A4 = 1:1100</td></tr> <tr><td>Date:</td><td>May 2022</td></tr> <tr><td>Sheet:</td><td>1 of 1</td></tr> </table>	Job No:	857	Surveyed by:	John Batt	Checked by:		Height Datum:		Coord Datum:	Nelson 2000	Scale:	@ A4 = 1:1100	Date:	May 2022	Sheet:	1 of 1
Job No:	857																		
Surveyed by:	John Batt																		
Checked by:																			
Height Datum:																			
Coord Datum:	Nelson 2000																		
Scale:	@ A4 = 1:1100																		
Date:	May 2022																		
Sheet:	1 of 1																		

P:\SIS5712D\Takaka Hill SH60 Slips Takaka Hill SH60 Slips

Plan Printed: Tue May 24 20:00:09 2022



S 1/1

Record of Survey
SO 574979
Approved on: 23/06/2022

Surveyor: John Douglas William Batt
Firm: Tasman Gowland Surveyors Ltd
Date of Survey: 23/03/2022

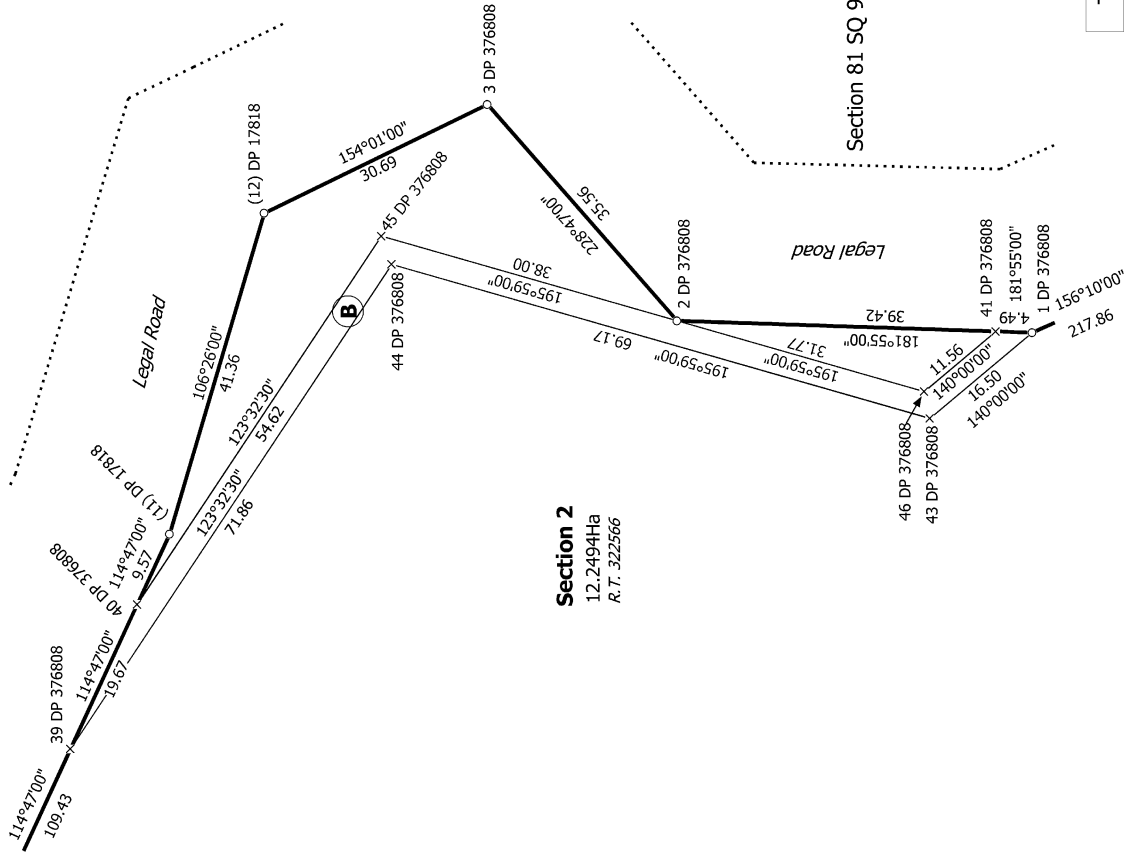
Sections 1 & 2

Land District: Nelson

Digitally Generated Plan
Generated on: 23/06/2022 06:28am | Page 10 of 12



Diag. B

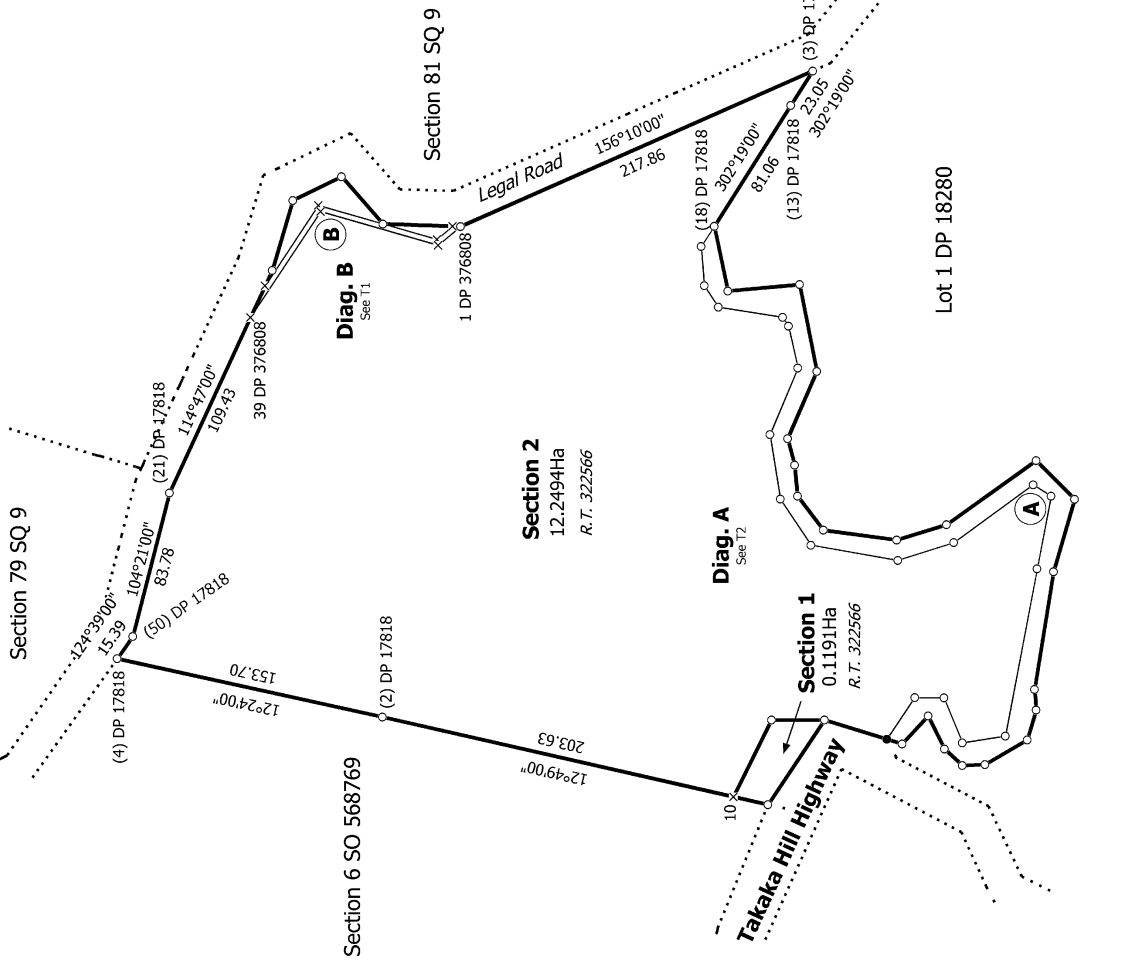


Section 2
12.2494Ha
R.T. 322566

T 1/2

Record of Survey
SO 574979
Approved on: 23/06/2022

Surveyor: John Douglas William Batt
Firm: Tasman Gowland Surveyors Ltd
Date of Survey: 23/03/2022



Section 2
12.2494Ha
R.T. 322566

Diag. A
See 72

Section 1
0.1191Ha
R.T. 322566

Sections 1 & 2

Land District: Nelson

Digitally Generated Plan

Generated on: 23/06/2022 06:28am Page 11 of 12

