



Record of Survey - SO 577371

Survey Number SO 577371
Surveyor Reference A2212349.00 Makatote Viaduct
Surveyor Andrew John Matthews
Survey Firm Harrison Grierson Consultants Ltd
Surveyor Declaration I Andrew John Matthews, being a licensed cadastral surveyor, certify that--
(a) this dataset provided by me and its related survey are accurate, correct and in accordance with the Cadastral Survey Act 2002 and Cadastral Survey Rules 2021; and
(b) the survey was undertaken by me or under my personal direction.
Declared on 26 May 2022 08:58 AM

Survey Details

Dataset Description Easement Over Part Section 27 Block VIII Manganui SD
Purpose Legalisation
Status Approved as to Survey
Land District Wellington
Meridional Circuit Tuhirangi OCD

Type	Parcels without Survey Information
Survey Class	Class B
Vertical Datum	None

Survey Dates

Surveyed Date	19/05/2022	Certified Date	26/05/2022
Submitted Date	26/05/2022 08:58:58	Survey Approval Date	13/06/2022
Deposit Date			

Referenced Surveys

Survey Number	Land District	Bearing Correction
SO 16018	Wellington	0°00'00"
SO 25519	Wellington	0°00'00"
SO 34229	Wellington	0°00'00"

Territorial Authorities

Ruapehu District

Comprised In

GN 1936 p 1519

Created Parcels

Parcels	Parcel Intent	Area	RT Reference
Area A Survey Office Plan 577371	Easement		
Total Area		0.0000 Ha	

Mark and Vector

Survey Number SO 577371

Meridional Circuit Tuhirangi OCD

From	To	Code	Bearing	Adpt Surv	Bearing Correction	Distance	Adpt Surv	Class
PEG (10) SO 16148	UNMK (1) SO 34229	ob0	40°33'00"	A SO 25519	0°00'00"	11.32 A	SO 34229	Class B
UNMK (1) SO 34229	PEG (2) SO 16148	ob2	40°33'00"	A SO 25519	0°00'00"	36.82 A	SO 34229	
PEG (2) SO 16148	UNMK (4) SO 25519	ob4	71°36'30"	A SO 25519	0°00'00"	92.05 A	SO 25519	
UNMK (4) SO 25519	PEG (6) SO 25519	ob5	43°06'00"	A SO 25519	0°00'00"	32.13 A	SO 25519	
PEG (6) SO 25519	UNMK 2 SO 577371	ob6	349°27'30"	A SO 16018	0°00'00"	23.83 C		
UNMK 2 SO 577371	UNMK 3 SO 577371	ob7	349°27'30"	A SO 16018	0°00'00"	8.19 C		Class B
UNMK 3 SO 577371	UNMK (5) SO 16018	ob8	349°27'30"	A SO 16018	0°00'00"	23.76 C		
PEG (10) SO 16148	UNMK 4 SO 577371	ob1	314°00'00"	C		8.47 C		Class B
UNMK 4 SO 577371	UNMK 5 SO 577371	ob9	266°25'00"	C		31.43 C		Class B
UNMK 5 SO 577371	UNMK 6 SO 577371	ob10	280°23'00"	C		13.31 C		Class B
UNMK 6 SO 577371	UNMK 7 SO 577371	ob11	323°24'00"	C		8.55 C		Class B
UNMK 7 SO 577371	UNMK 8 SO 577371	ob12	15°57'00"	C		7.53 C		Class B
UNMK 8 SO 577371	UNMK 9 SO 577371	ob13	64°41'00"	C		7.50 C		Class B
UNMK 9 SO 577371	UNMK 10 SO 577371	ob14	93°13'00"	C		9.47 C		Class B
UNMK 10 SO 577371	UNMK 11 SO 577371	ob15	64°23'00"	C		29.08 C		Class B
UNMK 11 SO 577371	UNMK 12 SO 577371	ob16	45°30'00"	C		18.17 C		Class B
UNMK 12 SO 577371	UNMK 13 SO 577371	ob17	19°24'00"	C		13.12 C		Class B
UNMK 13 SO 577371	UNMK 14 SO 577371	ob18	14°56'00"	C		19.44 C		Class B
UNMK 14 SO 577371	UNMK 15 SO 577371	ob19	42°11'00"	C		15.49 C		Class B
UNMK 15 SO 577371	UNMK 16 SO 577371	ob20	58°55'00"	C		23.66 C		Class B
UNMK 16 SO 577371	UNMK 17 SO 577371	ob21	74°47'00"	C		18.36 C		Class B
UNMK 17 SO 577371	UNMK 18 SO 577371	ob22	92°07'00"	C		28.74 C		Class B
UNMK 18 SO 577371	UNMK 19 SO 577371	ob23	83°32'00"	C		20.17 C		Class B

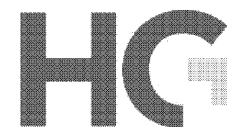
Mark and Vector

Survey Number SO 577371

Meridional Circuit Tuhirangi OCD

From	To	Code	Bearing	Adpt Surv	Bearing Correction	Distance	Adpt Surv	Class
UNMK 19 SO 577371	UNMK 3 SO 577371	ob24	67°00'00"	C		28.68 C		Class B
UNMK (1) SO 34229	UNMK 20 SO 577371	ob3	305°07'00"	C		9.81 C		Class B
UNMK 20 SO 577371	UNMK 21 SO 577371	ob25	266°25'00"	C		33.30 C		Class B
UNMK 21 SO 577371	UNMK 22 SO 577371	ob26	320°18'00"	C		3.46 C		Class B
UNMK 22 SO 577371	UNMK 23 SO 577371	ob27	64°23'00"	C		32.87 C		Class B
UNMK 23 SO 577371	UNMK 24 SO 577371	ob28	45°30'00"	C		21.35 C		Class B
UNMK 24 SO 577371	UNMK 25 SO 577371	ob29	19°24'00"	C		15.29 C		Class B
UNMK 25 SO 577371	UNMK 26 SO 577371	ob30	14°56'00"	C		17.81 C		Class B
UNMK 26 SO 577371	UNMK 27 SO 577371	ob31	42°11'00"	C		12.37 C		Class B
UNMK 27 SO 577371	UNMK 28 SO 577371	ob32	58°55'00"	C		21.37 C		Class B
UNMK 28 SO 577371	UNMK 29 SO 577371	ob33	74°47'00"	C		16.02 C		Class B
UNMK 29 SO 577371	UNMK 30 SO 577371	ob34	92°07'00"	C		28.12 C		Class B
UNMK 30 SO 577371	UNMK 31 SO 577371	ob35	83°32'00"	C		21.93 C		Class B
UNMK 31 SO 577371	UNMK 2 SO 577371	ob36	67°00'00"	C		28.10 C		Class B

*** End of Report ***

**Land Registration District**

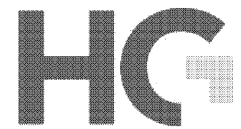
Wellington

Plan Number

SO 577371

Harrison Grierson Ref: A2212349.00

Schedule of Easements in Gross			
Purpose	Shown	Servient Tenement (Burdened Land)	Grantee
Right of Way	A	Part Section 27 Block VIII Manganui Survey District	KiwiRail Limited



Land Registration District

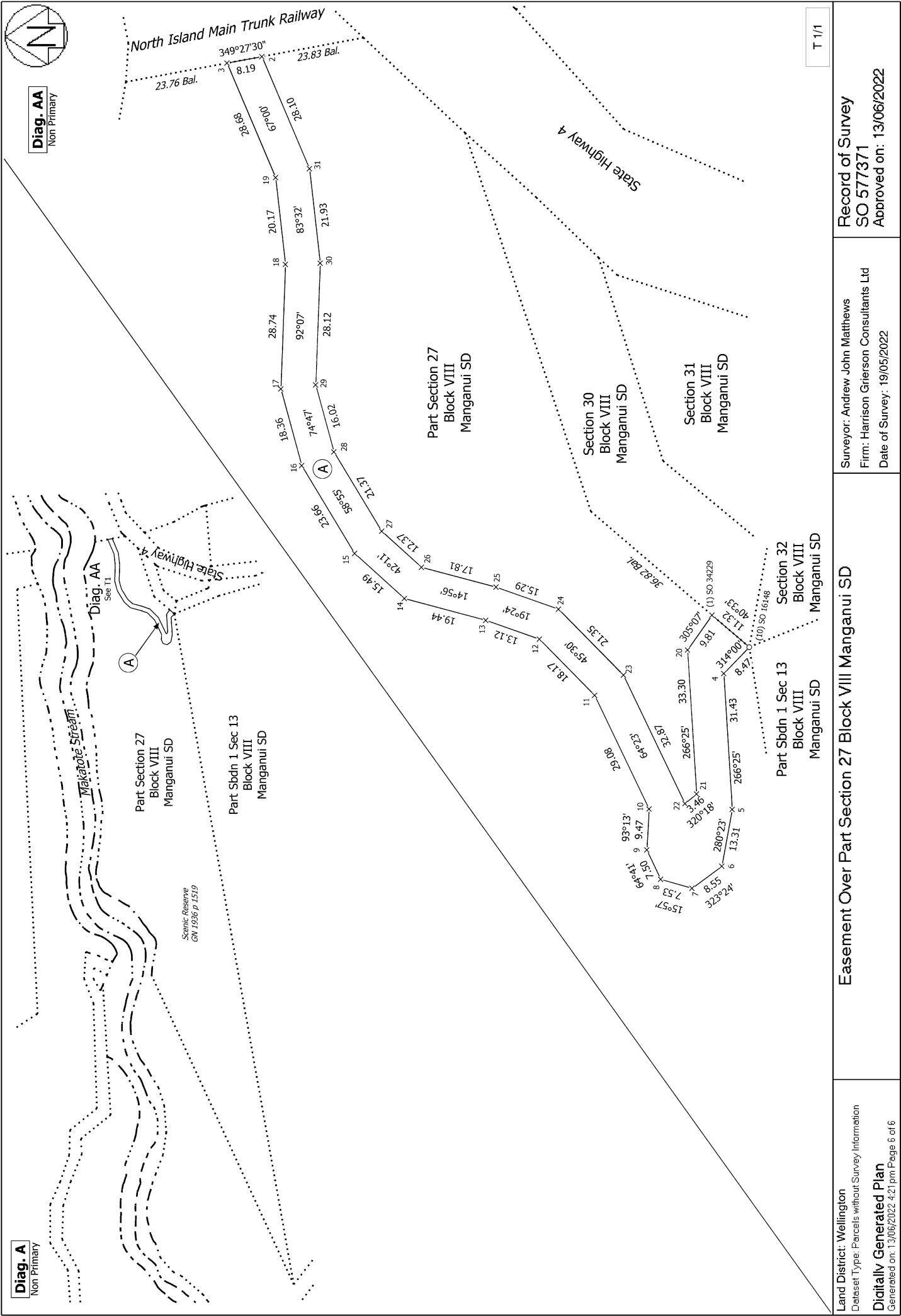
Wellington

Plan Number

SO 577371

Harrison Grierson Ref: A2212349.00

Easement to be Acquired			
Shown	Description	Estate Record	Area
A	Part Section 27 Block VIII Manganui Survey District	GN 1936 p 1519	2388m ²



T 1/1

Record of Survey
SO 577371
Approved on: 13/06/2022

Surveyor: Andrew John Matthews
Firm: Harrison Grierson Consultants Ltd
Date of Survey: 19/05/2022

Easement Over Part Section 27 Block VIII Manganui SD

Land District: Wellington
Dataset Type: Parcels without Survey Information
Digitally Generated Plan
Generated on: 13/06/2022 4:21pm Page 6 of 6