



# Record of Survey - SO 580791

---

**Survey Number** SO 580791  
**Surveyor Reference** P22-310 p22-15 Townsend Road  
**Surveyor** Michelle Tina Fletcher  
**Survey Firm** Wood & Partners Consultants Ltd  
**Surveyor Declaration** I Michelle Tina Fletcher, being a licensed cadastral surveyor, certify that--  
(a) this dataset provided by me and its related survey are accurate, correct and in accordance with the Cadastral Survey Act 2002 and Cadastral Survey Rules 2021; and  
(b) the survey was undertaken by me or under my personal direction.  
Declared on 20 Oct 2022 11:57 AM

---

## Survey Details

<b>Dataset Description</b>	Sections 1 & 2	<b>Type</b>	Survey
<b>Purpose</b>	Legalisation	<b>Survey Class</b>	Class B
<b>Status</b>	Approved as to Survey	<b>Vertical Datum</b>	None
<b>Land District</b>	Canterbury		
<b>Meridional Circuit</b>	Mount Pleasant 2000		

---

## Survey Dates

<b>Surveyed Date</b>	05/09/2022	<b>Certified Date</b>	20/10/2022
<b>Submitted Date</b>	20/10/2022 11:57:24	<b>Survey Approval Date</b>	25/10/2022
<b>Deposit Date</b>			

---

## Referenced Surveys

Survey Number	Land District	Bearing Correction
DP 516107	Canterbury	0°00'00"
DEED 3814	Canterbury	0°00'00"
DP 23261	Canterbury	0°00'00"
LT 74679	Canterbury	0°00'00"
DP 325765	Canterbury	0°00'00"
LT 56109	Canterbury	0°00'00"

---

## Territorial Authorities

Waimakariri District

---

## Comprised In

RT 103959

---

## Created Parcels

Parcels	Parcel Intent	Area	RT Reference
Section 1 Survey Office Plan 580791	Fee Simple Title	5.3687 Ha	1088814
Section 2 Survey Office Plan 580791	Legalisation	0.1292 Ha	
<b>Total Area</b>		<u>5.4979 Ha</u>	

---

# Mark and Vector

Survey Number SO 580791

Meridional Circuit Mount Pleasant 2000

From	To	Code	Bearing	Adpt Surv	Bearing Correction	Distance	Adpt Surv	Class
MA 6 DP 516107	MA 7 DP 516107	ob0	181°47'20"	M		9.16 M		
MA 6 DP 516107	MA 3 DP 516107	ob1	158°06'00"	M		18.11 M		
MA 6 DP 516107	IR 1 DP 516107	ob2	358°51'20"	M		33.38 M		
MA 6 DP 516107	IR II DP 325765	ob3	348°46'00"	M		324.06 M		
IR II DP 325765	PEG B6 DP 325765	ob10	175°01'00"	A	DP 325765	0°00'00"	43.64 A DP 325765	
PEG B6 DP 325765	PEG 20 SO 580791	ob12	169°46'30"	C		208.75 C		Class B
PEG 20 SO 580791	PEG (7) LT 74679	ob30	169°46'30"	C		58.59 C		Class B
PEG (7) LT 74679	IS IX DP 23261	ob14	155°26'00"	A	LT 74679	0°00'00"	40.71 A LT 74679	
IS IX DP 23261	IT REF DP 23261	ob15	169°45'35"	A	DP 23261	0°00'00"	7.30 A DP 23261	
IT REF DP 23261	IR II DP 325765	ob17	348°48'00"	A	DP 325765	0°00'00"	357.62 A DP 325765	
IS IX DP 23261	PEG (10) LT 74679	ob16	318°03'30"	A	LT 74679	0°00'00"	40.48 A LT 74679	
PEG (10) LT 74679	PEG (7) LT 74679	ob18	55°39'40"	A	LT 74679	0°00'00"	12.26 A LT 74679	Class B
IR II DP 325765	IT III LT 74679	ob11	261°26'30"	A	DP 325765	0°00'00"	224.71 A DP 325765	
IT III LT 74679	IT II DP 74679	ob19	251°13'40"	A	LT 74679	0°00'00"	146.18 A LT 74679	
IT II DP 74679	IT II LT 56109	ob20	121°34'10"	A	DP 325765	0°00'00"	386.37 A DP 325765	
IT II LT 56109	IT REF DP 23261	ob22	123°59'10"	A	DP 325765	0°00'00"	121.67 A DP 325765	
IT II DP 74679	PEG (14) LT 74679	ob21	74°44'00"	A	LT 74679	0°00'00"	15.68 A LT 74679	
PEG (14) LT 74679	PEG 21 SO 580791	ob23	121°32'20"	C		397.75 C		Class B
PEG 21 SO 580791	PEG (10) LT 74679	ob32	121°32'20"	C		55.77 C		Class B
PEG (14) LT 74679	POST (15) LT 74679	ob24	34°16'00"	A	LT 74679	0°00'00"	4.58 A LT 74679	Class B
POST (15) LT 74679	POST (16) LT 74679	ob25	349°03'00"	A	LT 74679	0°00'00"	16.62 A LT 74679	Class B
POST (16) LT 74679	POST (17) LT 74679	ob26	78°20'00"	A	LT 74679	0°00'00"	3.91 A LT 74679	Class B
POST (17) LT 74679	POST (18) LT 74679	ob27	59°44'00"	A	LT 74679	0°00'00"	25.86 A LT 74679	Class B
POST (18) LT 74679	PEG (19) LT 74679	ob28	90°13'00"	A	LT 74679	0°00'00"	118.79 A LT 74679	Class B
PEG (19) LT 74679	IT III LT 74679	ob29	294°05'30"	A	LT 74679	0°00'00"	23.10 A LT 74679	
PEG B6 DP 325765	PEG (19) LT 74679	ob13	270°10'30"	A	DP 325765	0°00'00"	204.86 A DP 325765	Class B
MA 7 DP 516107	MA 3 DP 516107	ob4	137°21'20"	M		10.39 M		

# Mark and Vector

Survey Number SO 580791

Meridional Circuit Mount Pleasant 2000

From	To	Code	Bearing	Adpt Surv	Bearing Correction	Distance	Adpt Surv	Class
PEG 20 SO 580791	PEG 22 SO 580791	ob31	204°16'00"	C		24.44 C		Class B
PEG 22 SO 580791	PEG 23 SO 580791	ob33	221°57'00"	C		23.08 C		Class B
PEG 23 SO 580791	PEG 21 SO 580791	ob34	280°28'00"	C		22.16 C		Class B
IR 1 DP 516107	PEG 22 SO 580791	ob7	292°45'00"	M		34.33 M		
IR 1 DP 516107	PEG 23 SO 580791	ob8	265°17'00"	M		47.25 M		
IR 1 DP 516107	IR II DP 325765	ob9	347°37'00"	M		291.25 M		
MA 7 DP 516107	IS 1 SO 580791	ob5	299°40'30"	M		81.45 M		
IS 1 SO 580791	IS 2 SO 580791	ob35	53°34'00"	M		64.97 M		
IS 2 SO 580791	IR 1 DP 516107	ob37	153°32'00"	M		40.64 M		
IS 2 SO 580791	PEG 20 SO 580791	ob38	256°47'00"	M		3.60 M		
IS 1 SO 580791	PEG 21 SO 580791	ob36	32°38'00"	M		2.78 M		
IR 1 DP 516107	DISK 4 DP 516107	ob6	164°12'40"	A	DP 516107	0°00'00"	53.02 A	DP 516107
IS II DP 23261	DISK 4 DP 516107	ob39	55°37'00"	A	DEED 3814	0°00'00"	4.41 A	DEED 3814
IS II DP 23261	PEG (20) LT 56109	ob40	211°30'00"	A	LT 56109	0°00'00"	16.09 A	LT 56109
PEG (20) LT 56109	IS IX DP 23261	ob41	22°13'00"	A	LT 56109	0°00'00"	8.73 A	LT 56109

Mark Name	Mark Condition	Description
IR 1 DP 516107		d0.05
IR II DP 325765		D 0.3
IS 1 SO 580791		D0.2
IS 2 SO 580791		D0.2
MA 3 DP 516107		fl in kerb
MA 6 DP 516107		fl in kerb
MA 7 DP 516107		fl in kerb
IT REF DP 23261	Searched For and Not Found	

\*\*\* End of Report \*\*\*

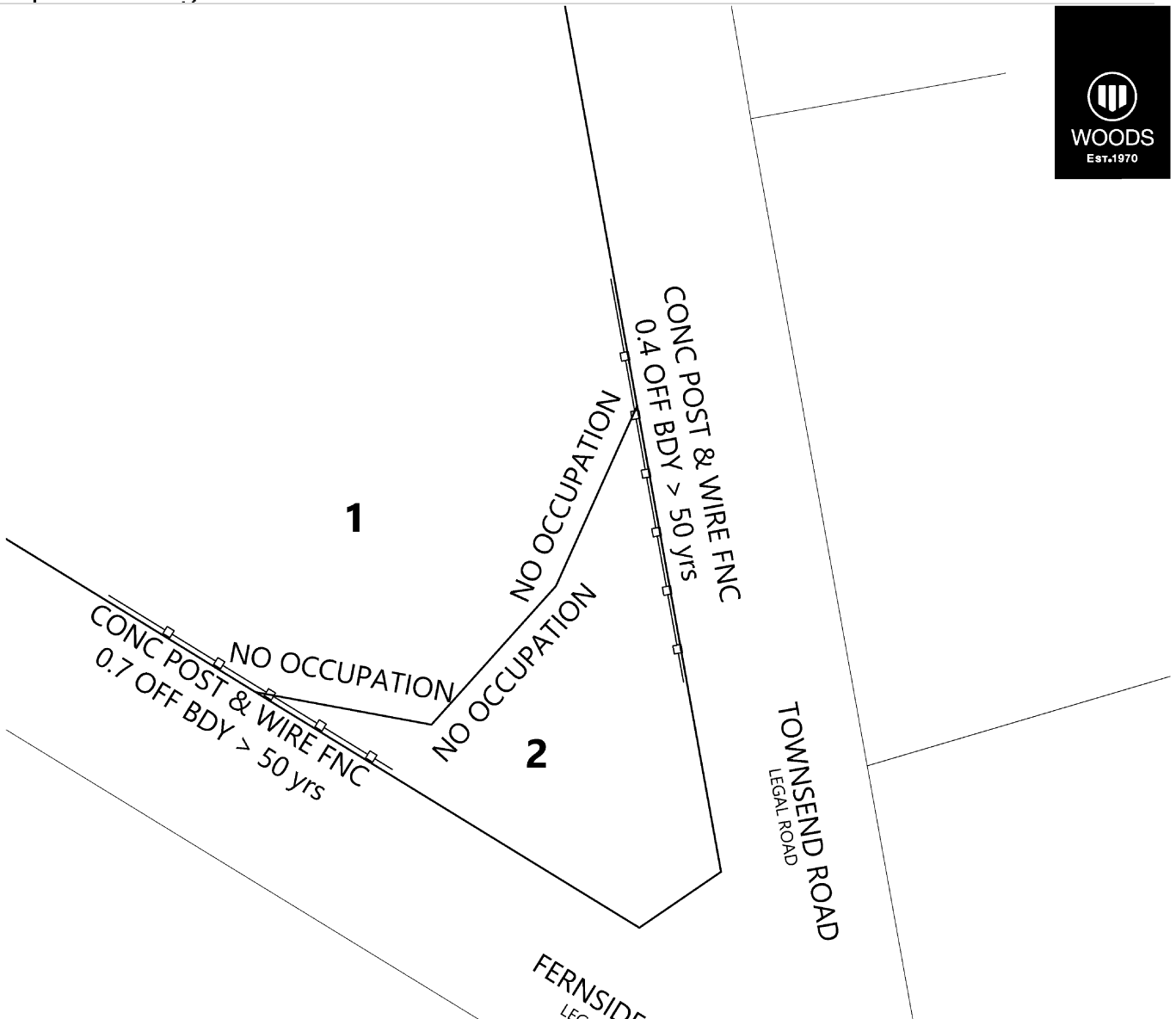


**SO 580791**

LAND TO BE ACQUIRED FOR ROAD			
SHOWN	DESCRIPTION	ESTATE RECORD	AREA
SECTION 2	LOT 5 DP 325765	RT 103959	0.1292ha

BALANCE			
SHOWN	DESCRIPTION	ESTATE RECORD	AREA
SECTION 1	LOT 5 DP 325765	RT 103959	5.3687ha

# Occupation Diagram



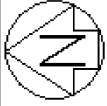
DISCLAIMER APPLIES VISIT WEBSITE FOR DETAILS  
WOODS.CO.NZ

P22-310 15  
Townsend Road

OCCUPATION

STATUS	ISSUED_FOR_LINZ	REV
SCALE	NTS@A4	1

P22-310-OCCUPATION



Diag. A

Lot 6 DP 325765

Lot 4 DP 325765

Lot 3 DP 325765

Lot 2 DP 325765

Lot 1 DP 325765

Diag. AA

Section 1

Section 2

Part RS 1579

Part RS 1352

Lot 2 DP 82284

Lot 1 DP 82284

Lot 2 DP 516107

Lot 1 DP 516107

Lot 8 DP 83411

Lot 2 DP 516107

Lot 8 DP 83411 (20) LT 56109

S 1/1

Land District: Canterbury

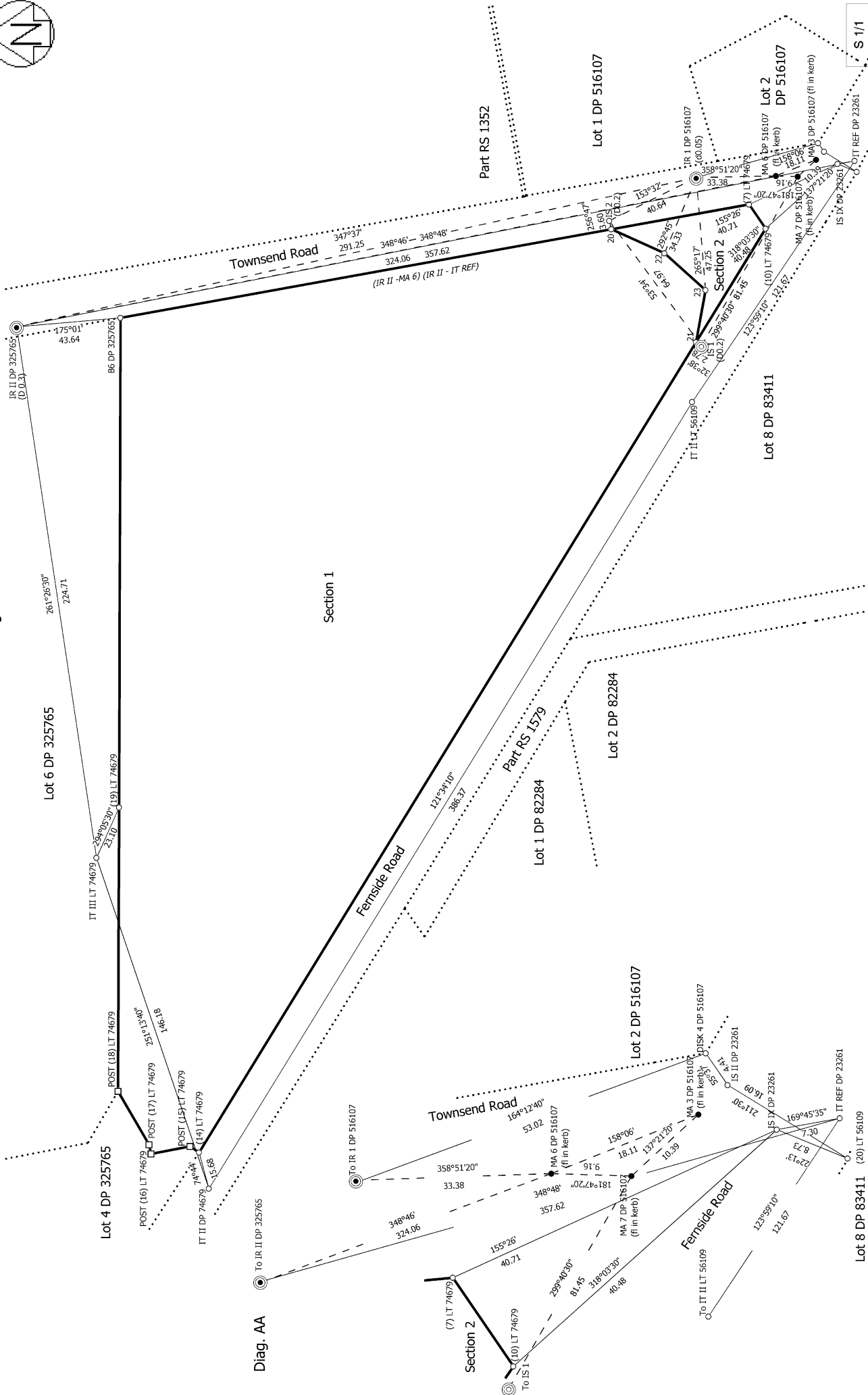
Sections 1 & 2

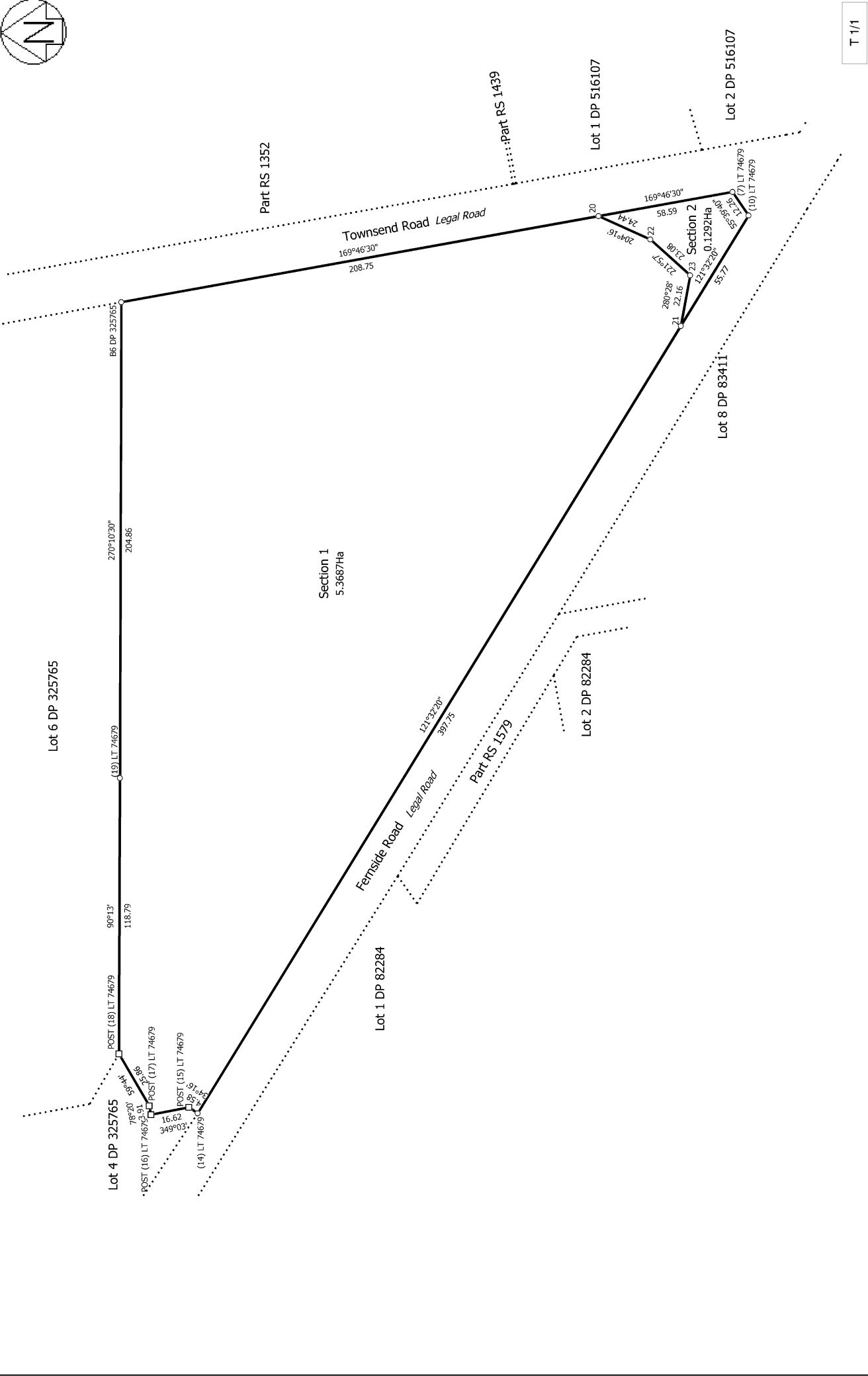
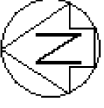
Surveyor: Michelle Tina Fletcher  
Firm: Wood & Partners Consultants Ltd  
Date of Survey: 5/09/2022

Record of Survey  
SO 580791  
Approved on: 25/10/2022

Digitally Generated Plan

Generated on: 25/10/2022 2:13pm Page 6 of 7





T 1/1

<p>Land District: Canterbury</p> <p><b>Digitally Generated Plan</b></p> <p><small>Generated on: 25/10/2022 2:13pm Page 7 of 7</small></p>	<p><b>Sections 1 &amp; 2</b></p>	<p>Surveyor: Michelle Tina Fletcher          Firm: Wood &amp; Partners Consultants Ltd          Date of Survey: 5/09/2022</p>	<p><b>Record of Survey</b>  <b>SO 580791</b>          Approved on: 25/10/2022</p>
---	----------------------------------	---	---