

# Record of Survey - SO 585473

**Survey Number** SO 585473  
**Surveyor Reference** A5098 - CODC (Mutton Town)  
**Surveyor** Elizabeth Sarah Whyte  
**Survey Firm** Paterson Pitts Limited Partnership (Cromwell)  
**Surveyor Declaration** I Elizabeth Sarah Whyte, being a licensed cadastral surveyor, certify that--  
 (a) this dataset provided by me and its related survey are accurate, correct and in accordance with the Cadastral Survey Act 2002 and Cadastral Survey Rules 2021; and  
 (b) the survey was undertaken by me or under my personal direction.  
 Declared on 13 Feb 2023 02:53 PM

## Survey Details

<b>Dataset Description</b>	Sections 1 - 4		
<b>Purpose</b>	Legalisation		
<b>Status</b>	Approved as to Survey	<b>Type</b>	Survey
<b>Land District</b>	Otago	<b>Survey Class</b>	Class A
<b>Meridional Circuit</b>	Lindis Peak 2000	<b>Vertical Datum</b>	None

## Survey Dates

<b>Surveyed Date</b>	23/11/2022	<b>Certified Date</b>	13/02/2023
<b>Submitted Date</b>	13/02/2023 14:53:12	<b>Survey Approval Date</b>	14/02/2023
<b>Deposit Date</b>			

## Referenced Surveys

Survey Number	Land District	Bearing Correction
SO 14162	Otago	-0°07'30"
DP 18990	Otago	0°00'00"
SO 390760	Otago	0°00'00"
SO 19730	Otago	0°00'00"
DP 525753	Otago	0°00'00"
SO 378918	Otago	0°00'00"
SO 557686	Otago	0°00'00"
DP 12265	Otago	-0°07'30"

## Territorial Authorities

Central Otago District

## Comprised In

RT OT4C/1309

## Created Parcels

Parcels	Parcel Intent	Area	RT Reference
Section 4 Survey Office Plan 585473	Fee Simple Title Road	2.6726 Ha	
Section 1 Survey Office Plan 585473	Legalisation	0.3027 Ha	
Section 2 Survey Office Plan 585473	Legalisation	0.1583 Ha	



# Record of Survey - SO 585473

---

## Created Parcels

Parcels	Parcel Intent	Area	RT Reference
Section 3 Survey Office Plan 585473	Legalisation	0.2996 Ha	
<b>Total Area</b>		<u>3.4332 Ha</u>	

# Mark and Vector

Survey Number SO 585473  
 Meridional Circuit Lindis Peak 2000

From	To	Code	Bearing	Adpt Surv	Bearing Correction	Distance	Adpt Surv	Class
PEG (1) SO 14162	PEG (2) SO 14162	ob0	315°38'00"	A SO 14162	-0°07'30"	216.20	A SO 14162	Class A
PEG 25 SO 585473	POST DP 12265	ob32	226°53'15"	A SO 14162	-0°07'30"	130.40	C	Class B
POST DP 12265	PEG SO 14162	ob6	316°52'30"	A SO 14162	-0°07'30"	216.07	A SO 14162	Class B
PEG 24 SO 585473	PEG SO 14162	ob30	226°52'30"	A SO 14162	-0°07'30"	116.95	C	Class B
PEG SO 19730	PEG SO 14162	ob4	135°38'20"	A SO 19730	0°00'00"	65.66	A SO 19730	Class A
PEG 2 SO 585473	PEG 26 SO 585473	ob7	135°38'20"	A DP 18990	0°00'00"	15.02	C	Class A
PEG 26 SO 585473	PEG (1) DP 12610	ob8	135°38'20"	A DP 18990	0°00'00"	100.95	C	Class A
PEG SO 19730	PEG 3 SO 585473	ob5	206°59'00"	C		14.14	C	Class A
PEG 3 SO 585473	PEG 4 SO 585473	ob10	172°39'00"	C		9.93	C	Class A
PEG 4 SO 585473	PEG 5 SO 585473	ob11	137°23'00"	C		12.10	C	Class A
PEG 5 SO 585473	PEG 6 SO 585473	ob12	136°33'00"	C		17.33	C	Class A
PEG 6 SO 585473	PEG 7 SO 585473	ob13	137°23'00"	C		18.34	C	Class A
PEG 7 SO 585473	PEG 8 SO 585473	ob14	137°09'00"	C		8.00	C	Class A
PEG 8 SO 585473	PEG 9 SO 585473	ob15	136°37'00"	C		17.10	C	Class A
PEG 9 SO 585473	PEG 10 SO 585473	ob16	135°18'00"	C		16.00	C	Class A
PEG 10 SO 585473	PEG 11 SO 585473	ob17	136°25'00"	C		16.00	C	Class A
PEG 12 SO 585473	PEG 13 SO 585473	ob75	134°55'00"	C		12.82	C	Class A
PEG 13 SO 585473	PEG 14 SO 585473	ob19	88°08'00"	C		8.39	C	Class A
PEG 14 SO 585473	PEG 2 SO 585473	ob20	42°27'00"	C		15.02	C	Class A
PEG 26 SO 585473	PEG 15 SO 585473	ob9	222°27'00"	C		14.16	C	Class A
PEG 15 SO 585473	PEG 16 SO 585473	ob21	177°47'00"	C		8.53	C	Class A
PEG 16 SO 585473	PEG 17 SO 585473	ob22	132°37'00"	C		12.93	C	Class A
PEG 17 SO 585473	PEG 18 SO 585473	ob23	130°22'00"	C		15.00	C	Class A
PEG 18 SO 585473	PEG 19 SO 585473	ob24	130°01'00"	C		15.99	C	Class A

# Mark and Vector

**Survey Number** SO 585473  
**Meridional Circuit** Lindis Peak 2000

From	To	Code	Bearing	Adpt Surv	Bearing Correction	Distance	Adpt Surv	Class
PEG 19 SO 585473	PEG 20 SO 585473	ob25	129°32'00"	C		15.00 C		Class A
PEG 20 SO 585473	PEG 21 SO 585473	ob26	129°06'00"	C		18.13 C		Class A
PEG 21 SO 585473	PEG 22 SO 585473	ob27	128°58'00"	C		6.21 C		Class A
PEG 22 SO 585473	PEG 23 SO 585473	ob28	127°36'00"	C		10.87 C		Class A
PEG 23 SO 585473	PEG (1) DP 12610	ob29	46°52'00"	C		10.34 C		Class A
PEG (2) SO 14162	PEG 24 SO 585473	ob2	226°52'30"	A SO 14162	-0°07'30"	18.26 C		Class B
PEG (1) SO 14162	PEG 25 SO 585473	ob1	226°53'15"	A SO 14162	-0°07'30"	9.47 C		Class A
PEG 24 SO 585473	PEG 25 SO 585473	ob31	133°18'30"	C		216.55 C		Class A
D 125 (MOW)	IT II DP 12265	ob40	100°41'00"	A SO 557686	0°00'00"	64.41 A SO 557686		
IT 1 SO 378918	D 125 (MOW)	ob45	8°21'10"	A SO 378918	0°00'00"	377.99 A SO 378918		
IT 1 SO 378918	IT 2 SO 378918	ob46	36°57'40"	A SO 378918	0°00'00"	91.59 A SO 378918		
IT 2 SO 378918	IR 3 SO 378918	ob47	43°41'00"	A SO 378918	0°00'00"	87.47 A SO 378918		
IR 3 SO 378918	IT 4 SO 378918	ob48	47°12'30"	A SO 378918	0°00'00"	106.79 A SO 378918		
IT 4 SO 378918	IT I DP 12265	ob50	82°03'10"	A SO 378918	0°00'00"	65.79 A SO 378918		
IT V DP 8881	PEG (1) DP 12610	ob42	42°39'30"	A DP 525753	0°00'00"	10.09 A DP 525753		
IT I SO 19730	PEG SO 19730	ob58	117°23'00"	A SO 19730	0°00'00"	32.12 A SO 19730		
IT VII DP 12265	D 125 (MOW)	ob59	109°34'00"	M		253.56 M		
IR 3 SO 378918	POST DP 12265	ob49	306°49'00"	A SO 378918	0°00'00"	1.76 A SO 378918		
IT II DP 12265	IT I SO 19730	ob44	315°38'20"	A SO 19730	0°00'00"	96.16 A SO 19730		
IT VII DP 12265	NAIL 1 SO 585473	ob60	137°36'10"	M		321.10 M		
IT I DP 12265	IT V DP 8881	ob56	137°02'30"	A DP 525753	0°00'00"	0.74 A DP 525753		
PEG 11 SO 585473	PEG 12 SO 585473	ob18	136°07'00"	C		16.35 C		Class A
D 125 (MOW)	PEG 3 SO 585473	ob35	31°39'00"	M		34.59 M		
D 125 (MOW)	PEG 4 SO 585473	ob33	44°45'00"	M		27.60 M		
D 125 (MOW)	PEG 5 SO 585473	ob34	68°52'00"	M		29.63 M		
D 125 (MOW)	PEG 6 SO 585473	ob36	92°46'00"	M		39.58 M		
D 125 (MOW)	PEG 7 SO 585473	ob37	106°29'30"	M		54.21 M		
D 125 (MOW)	PEG 8 SO 585473	ob38	110°19'20"	M		61.20 M		
NAIL 1 SO 585473	PEG 9 SO 585473	ob61	37°42'00"	M		149.78 M		

# Mark and Vector

Survey Number SO 585473

Meridional Circuit Lindis Peak 2000

From	To	Code	Bearing	Adpt Surv	Bearing Correction	Distance	Adpt Surv	Class
NAIL 1 SO 585473	PEG 10 SO 585473	ob62	43°49'40" M			148.50 M		
NAIL 1 SO 585473	PEG 11 SO 585473	ob63	49°59'40" M			148.63 M		
NAIL 1 SO 585473	PEG 12 SO 585473	ob64	56°12'40" M			150.64 M		
NAIL 1 SO 585473	PEG 13 SO 585473	ob65	60°54'20" M			153.65 M		
NAIL 1 SO 585473	PEG 14 SO 585473	ob66	62°16'20" M			161.16 M		
D 125 (MOW)	PEG 2 SO 585473	ob39	116°54'00" M			146.18 M		
IT I DP 12265	D 125 (MOW)	ob51	307°22'40" M			256.85 M		
IT I DP 12265	PEG 26 SO 585473	ob52	321°20'00" M			101.24 M		
IT I DP 12265	PEG 23 SO 585473	ob53	225°15'00" M			0.29 M		
IT I DP 12265	PEG 25 SO 585473	ob54	279°44'30" M			50.45 M		
IT I DP 12265	NAIL 1 SO 585473	ob55	270°56'20" M			226.56 M		
D 125 (MOW)	PEG 24 SO 585473	ob41	289°53'00" M			3.38 M		
NAIL 1 SO 585473	PEG 15 SO 585473	ob67	67°07'00" M			166.86 M		
NAIL 1 SO 585473	PEG 16 SO 585473	ob68	69°54'30" M			164.05 M		
NAIL 1 SO 585473	PEG 17 SO 585473	ob69	73°46'30" M			170.36 M		
NAIL 1 SO 585473	PEG 18 SO 585473	ob70	77°47'00" M			179.06 M		
NAIL 1 SO 585473	PEG 19 SO 585473	ob71	81°36'50" M			189.27 M		
NAIL 1 SO 585473	PEG 20 SO 585473	ob72	84°48'40" M			199.64 M		
NAIL 1 SO 585473	PEG 21 SO 585473	ob73	88°13'00" M			212.99 M		
NAIL 1 SO 585473	PEG 22 SO 585473	ob74	89°17'00" M			217.73 M		
IT I DP 12265	PEG (1) DP 12610	ob57	46°55'00" M			10.04 M		
IT V DP 8881	D 125 (MOW)	ob43	307°24'20" A	DP 525753	0°00'00"	257.58 A	DP 525753	
PEG (2) SO 14162	PEG IV SO 14162	ob3	315°38'00" A	SO 14162	-0°07'30"	20.12 A	SO 14162	
PEG IV SO 14162	PEG (1) DP 12265	ob76	315°38'00" A	SO 14162	-0°07'30"	125.29 A	DP 12265	
PEG (1) DP 12265	ISV DP 12265	ob77	45°38'00" A	DP 12265	-0°07'30"	20.12 A	DP 12265	

# Mark and Vector

Survey Number SO 585473

Meridional Circuit Lindis Peak 2000

From	To	Code	Bearing	Adpt Surv	Bearing Correction	Distance	Adpt Surv	Class
ISV DP 12265	IT VI DP 12265	ob78	315°38'00"	A DP 12265	-0°07'30"	87.53	A DP 12265	
PEG SO 14162	PEG 2 SO 585473	ob79	135°38'20"	A DP 18990	0°00'00"	85.64	C	Class A

Mark Name	Mark Condition	Description
D 125 (MOW)		25 mm stainless steel pin in 0.40 x 0.40 concrete block - 0.20 m below ground level - under concrete lid.
IT I DP 12265		Mark is down 0.20m.
IT VII DP 12265		d 0.10m
NAIL 1 SO 585473		Nail in Kerb

\*\*\* End of Report \*\*\*

PATERSONPITTSGROUP

**Land Registration District**

Otago

**Plan Number**

SO 585473

**Territorial Authority**

Central Otago District Council

**Job Number**

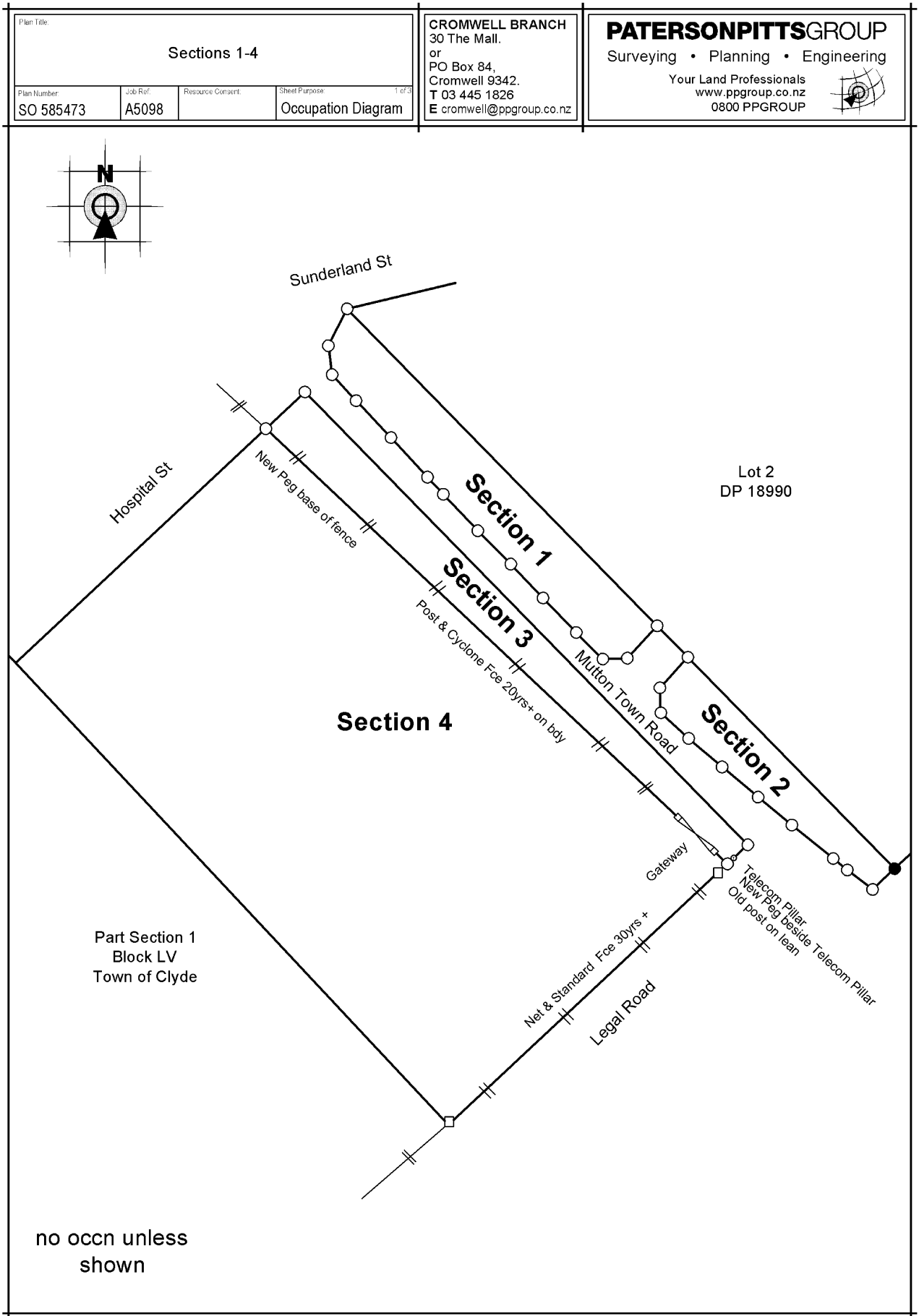
A5098

**SCHEDULE OF AREAS**

<b>ROAD TO BE STOPPED</b>			
SHOWN	Adjoining	Estate Title	Area
Section 1	Lot 2 DP 18990	OT17D/237	0.3027ha
Section 2			0.1583ha

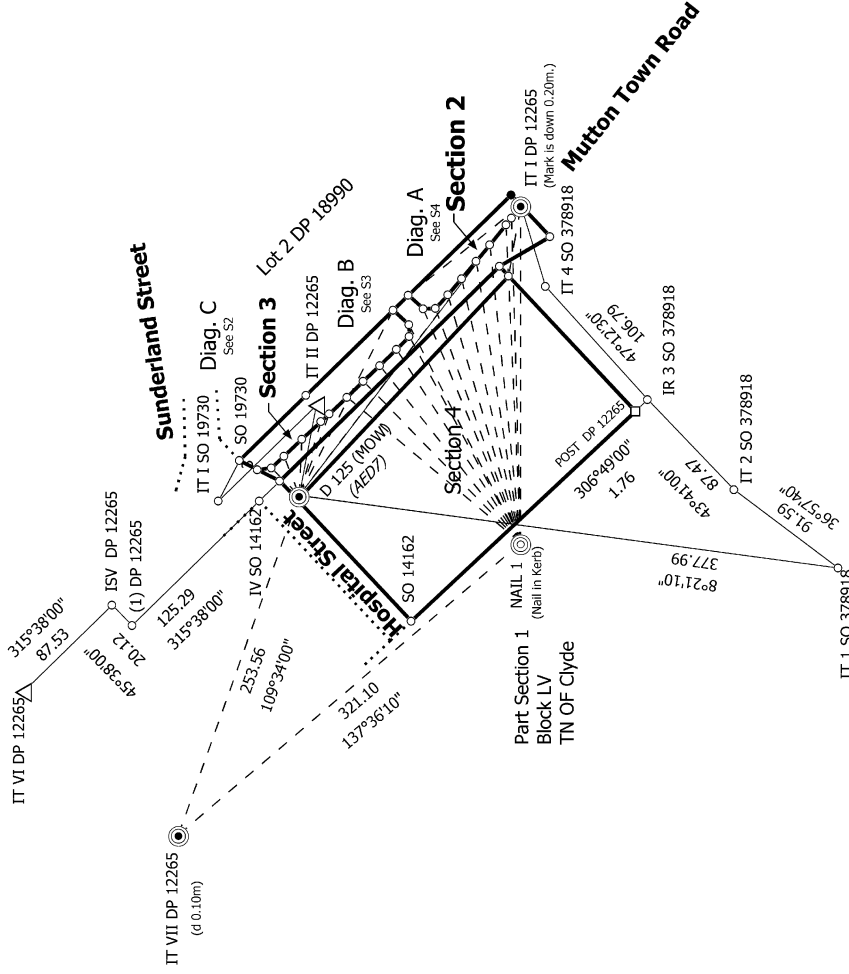
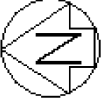
<b>LAND TO BE ACQUIRED FOR ROAD</b>			
SHOWN	Description	Estate Title	Area
Section 3	Section 3 Block LV Town of Clyde	OT4C/1309	0.2996ha

# Occupation Diagram

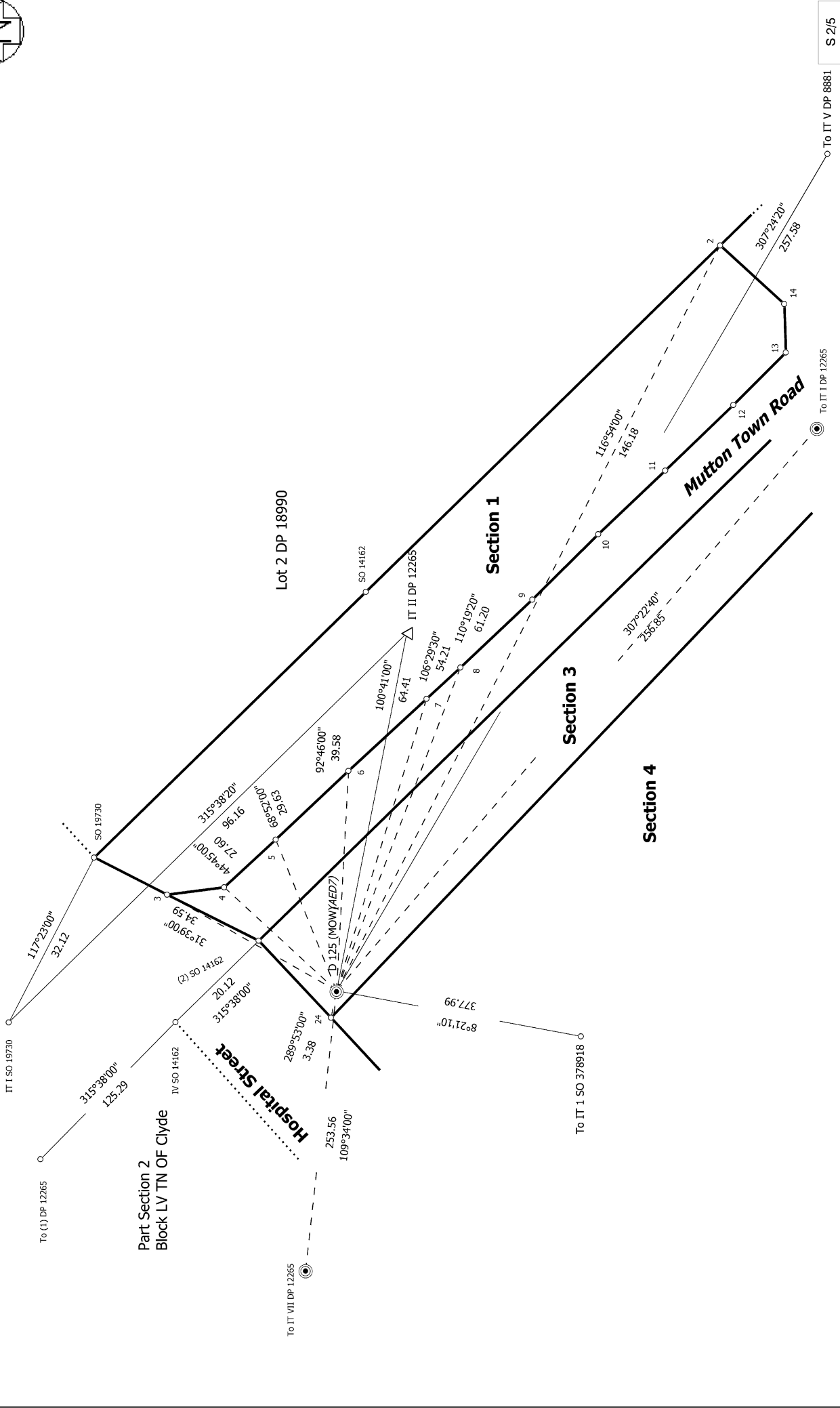


PLOT DATE: 16 December, 2022 - 12:08 PM BY: LibbyWhyte JVA\_5098 CODC (CLYDE ROAD STOPPING)ESURVISO5854730CCDIA.DWG





<p>Land District: Otago</p> <p><b>Digitally Generated Plan</b></p> <p>Generated on: 14/02/2023 11:06am   Page 9 of 16</p>	<p><b>Sections 1 - 4</b></p>	<p>Surveyor: Elizabeth Sarah Whyte          Firm: Paterson Pitts Limited Partnership (C)          Date of Survey: 23/11/2022</p>	<p>Record of Survey  <b>SO 585473</b>          Approved on: 14/02/2023</p>
---	------------------------------	--	--



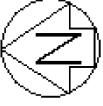
S 2/5

Land District: Otago  
 Digitally Generated Plan  
 Generated on: 14/02/2023 11:06am | Page 10 of 16

Sections 1 - 4

Surveyor: Elizabeth Sarah Whyte  
 Firm: Paterson Pitts Limited Partnership (C)  
 Date of Survey: 23/11/2022

Record of Survey  
 SO 585473  
 Approved on: 14/02/2023



Diag. B

To D 125 (MOW)

Lot 2 DP 18990

Section 1

9

10

11

12

13

14

2

Mutton Town Road

Section 3

Section 4

To IT VI DP 12265

321.10  
137°36'10"

NAIL 1  
(Nail in Kerb)

226.56  
270°56'20"

To IT I DP 12265

S 3/5

Land District: Otago

**Digitally Generated Plan**  
Generated on: 14/02/2023 11:06am | Page 11 of 16

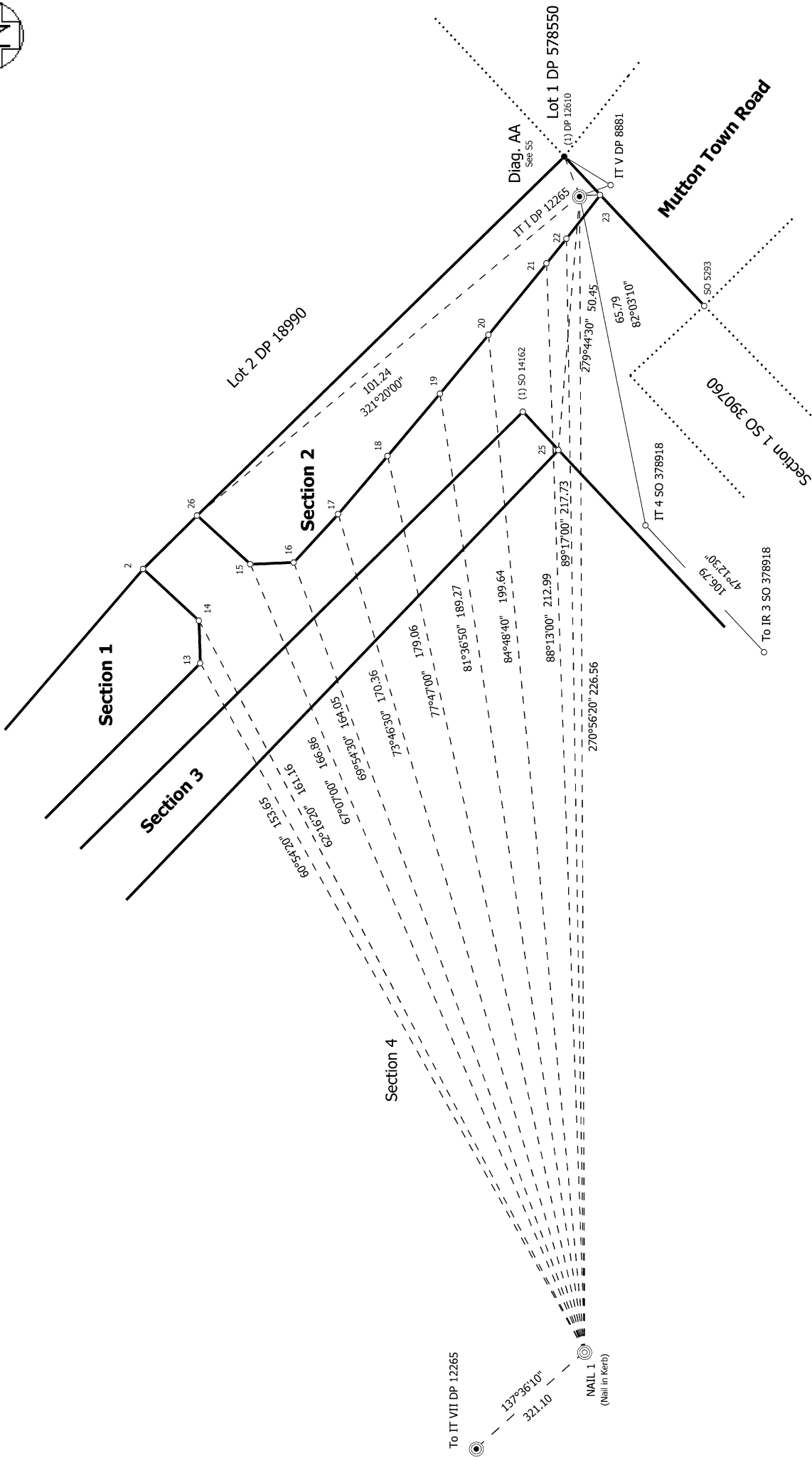
Sections 1 - 4

Surveyor: Elizabeth Sarah Whyte  
Firm: Paterson Pitts Limited Partnership (C)  
Date of Survey: 23/11/2022

Record of Survey  
SO 585473  
Approved on: 14/02/2023



Diag. A

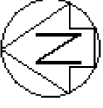


Record of Survey  
 SO 585473  
 Approved on: 14/02/2023

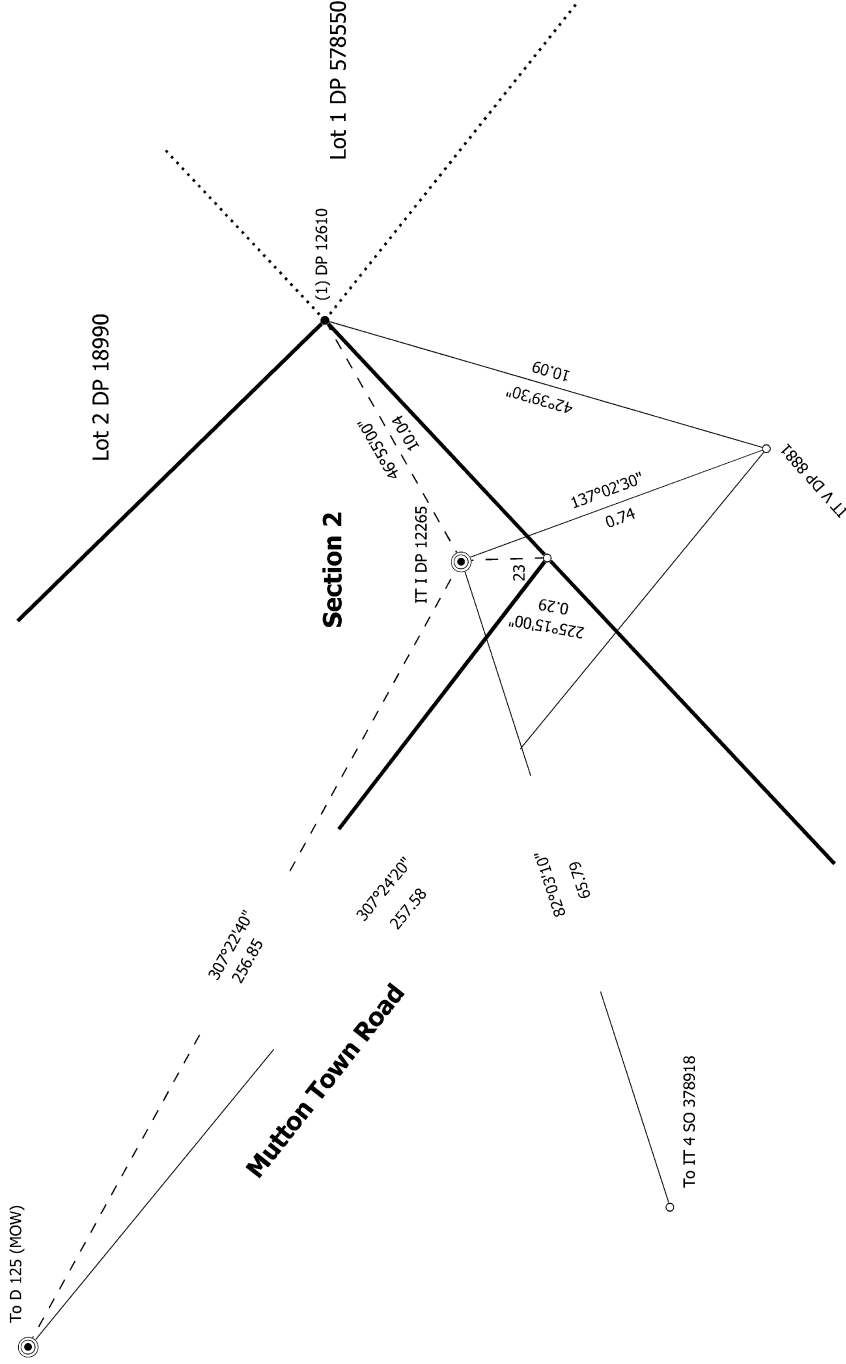
Surveyor: Elizabeth Sarah Whyte  
 Firm: Paterson Pitts Limited Partnership (C)  
 Date of Survey: 23/11/2022

Sections 1 - 4

Land District: Otago



Diag. AA



S 5/5

Land District: Otago

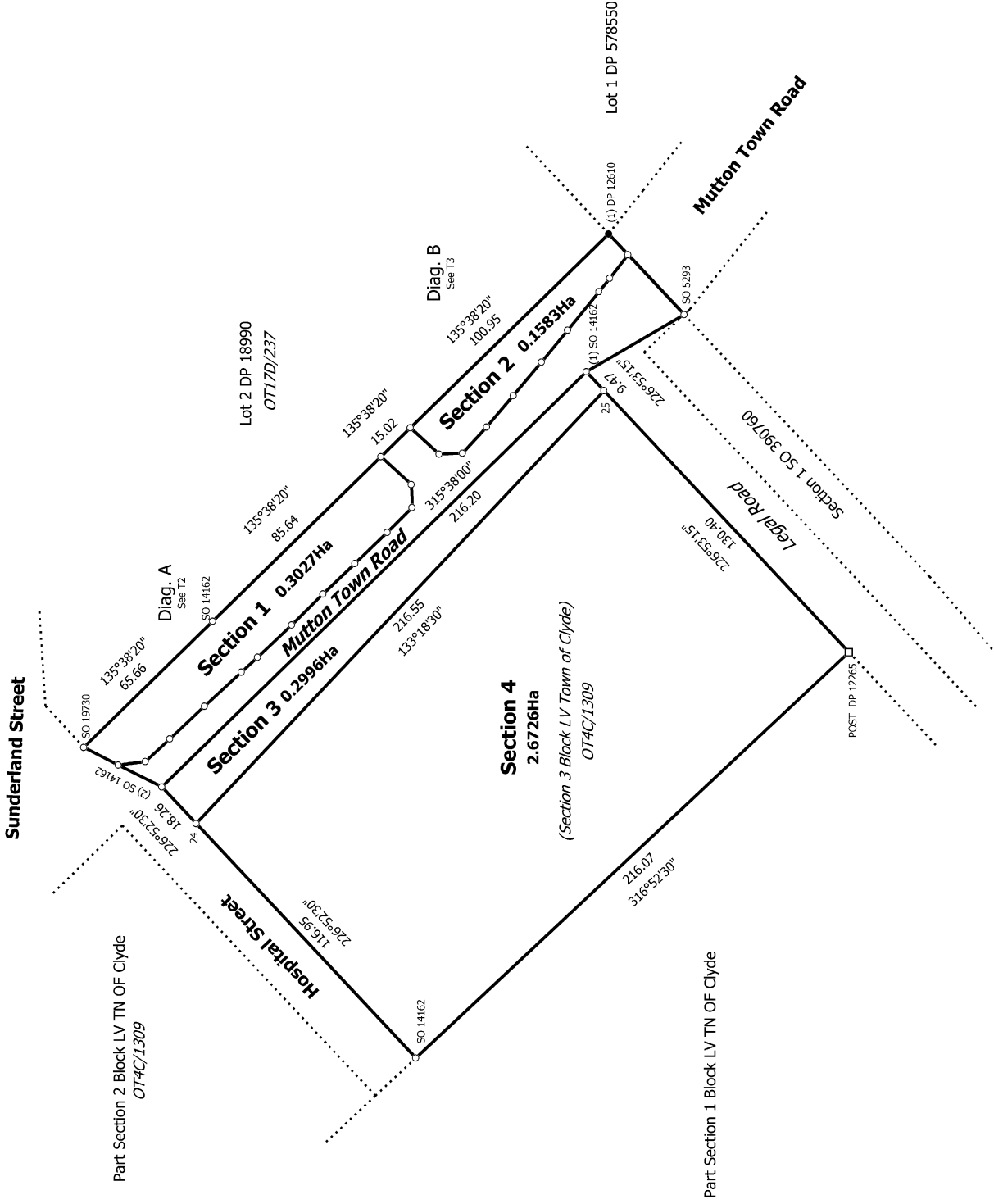
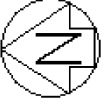
**Digitally Generated Plan**

Generated on: 14/02/2023 11:06am Page 13 of 16

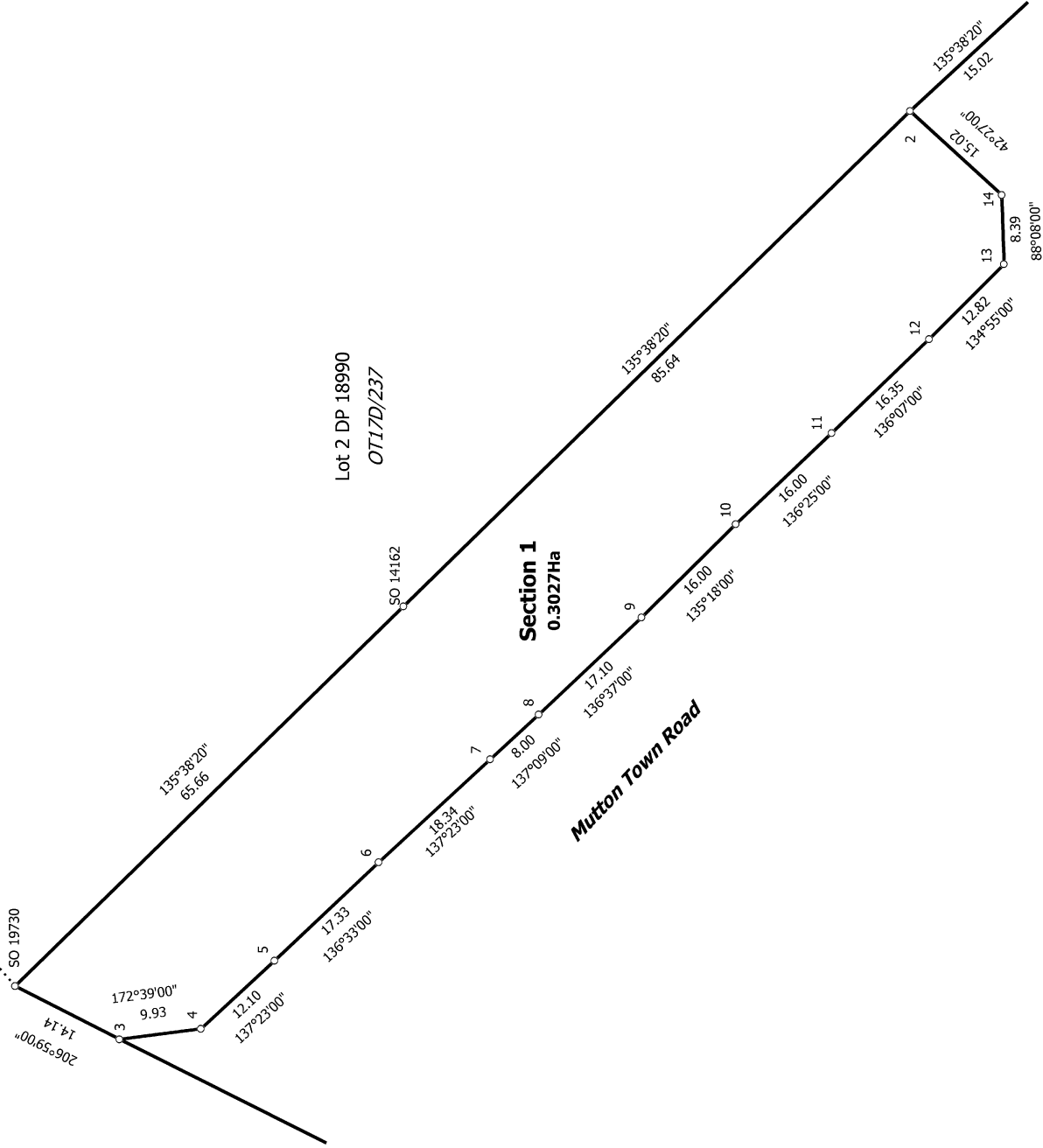
Sections 1 - 4

Surveyor: Elizabeth Sarah Whyte  
Firm: Paterson Pitts Limited Partnership (C)  
Date of Survey: 23/11/2022

Record of Survey  
SO 585473  
Approved on: 14/02/2023



Diag. A



Lot 2 DP 18990  
OT17D/237

**Section 1**  
0.3027Ha

**Mutton Town Road**

T 2/3

Land District: Otago

**Digitally Generated Plan**

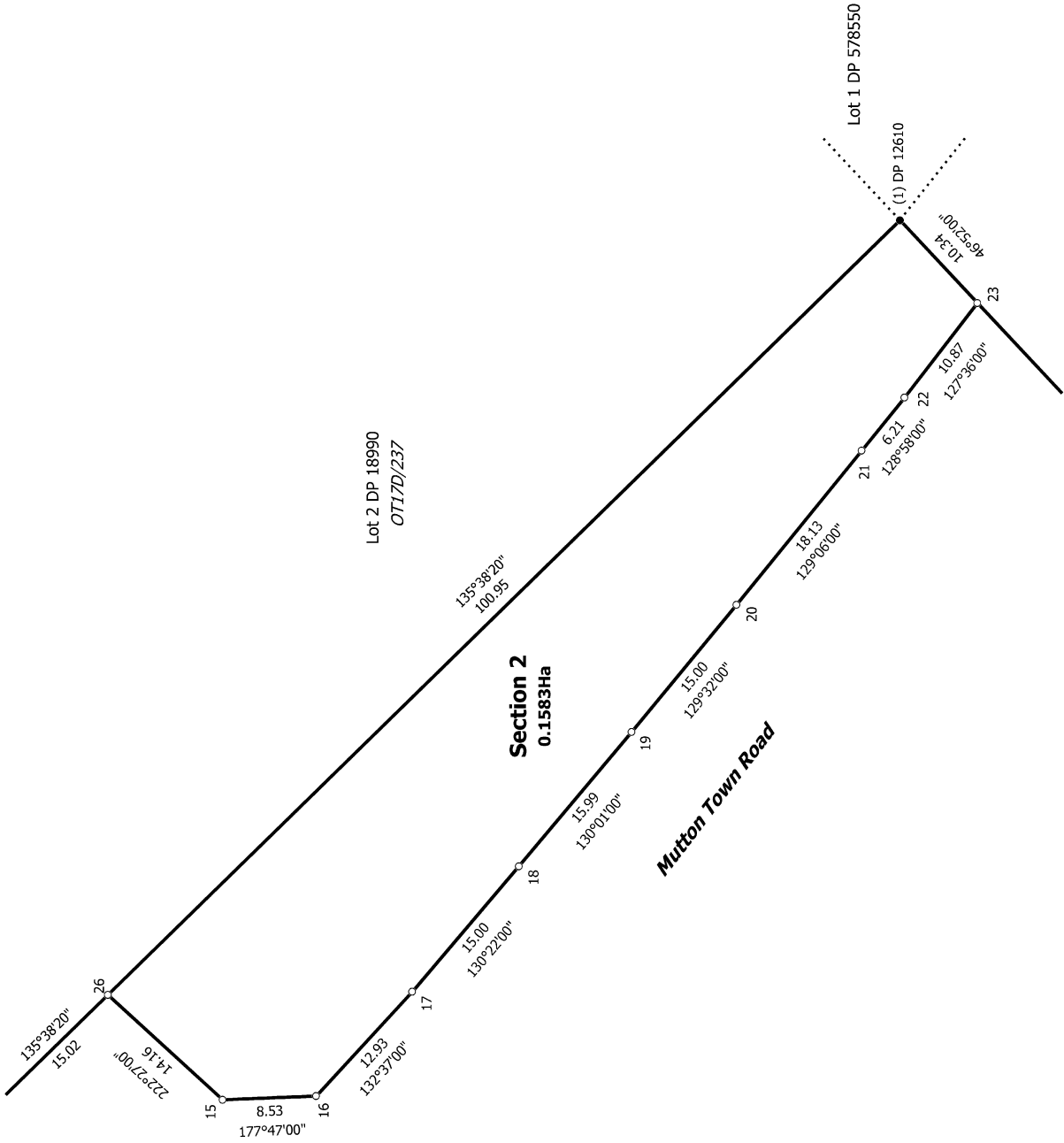
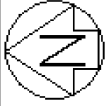
Generated on: 14/02/2023 11:06am | Page 15 of 16

Sections 1 - 4

Surveyor: Elizabeth Sarah Whyte  
Firm: Paterson Pitts Limited Partnership (C)  
Date of Survey: 23/11/2022

Record of Survey  
SO 585473  
Approved on: 14/02/2023

Diag. B



T 3/3

Land District: Otago

**Digitally Generated Plan**  
Generated on: 14/02/2023 11:06am | Page 16 of 16

Sections 1 - 4

Surveyor: Elizabeth Sarah Whyte  
Firm: Paterson Pitts Limited Partnership (C)  
Date of Survey: 23/11/2022

Record of Survey  
SO 585473  
Approved on: 14/02/2023