

Record of Survey - DP 578555

Survey Number	DP 578555
Surveyor Reference	6183
Surveyor	Scott Jay Becker
Survey Firm	Survey Worx Ltd
Surveyor Declaration	I Scott Jay Becker, being a licensed cadastral surveyor, certify that-- (a) this dataset provided by me and its related survey are accurate, correct and in accordance with the Cadastral Survey Act 2002 and Cadastral Survey Rules 2021; and (b) the survey was undertaken by me or under my personal direction. Declared on 24 Aug 2022 02:00 PM

Survey Details

Dataset Description	Lots 1 and 2 being a Subdivision of Tahoraiti 1F2 Block and Part Tahoraiti 1F1 Block and Easement over Lot 2 DP 360914		
Purpose	LT Subdivision		
Status	Deposited	Type	Survey
Land District	Hawkes Bay	Survey Class	Class B
Meridional Circuit	Hawkes Bay 2000	Vertical Datum	None

Survey Dates

Surveyed Date	16/06/2022	Certified Date	24/08/2022
Submitted Date	24/08/2022 14:00:50	Survey Approval Date	30/08/2022
Deposit Date	12/07/2023		

Referenced Surveys

Survey Number	Land District	Bearing Correction
DP 15170	Hawkes Bay	0°00'00"
DP 26919	Hawkes Bay	0°00'00"
ML 1037	Hawkes Bay	0°00'00"
ML 1307	Hawkes Bay	0°00'00"
ML 858	Hawkes Bay	-0°03'00"
SO 2418	Hawkes Bay	0°00'00"
DP 360914	Hawkes Bay	0°00'00"

Territorial Authorities

Tararua District

Comprised In

RT HBA4/742
RT HBB1/1347

Created Parcels

Parcels	Parcel Intent	Area	RT Reference
Lot 1 Deposited Plan 578555	Fee Simple Title	1.9246 Ha	1071365
Lot 2 Deposited Plan 578555	Fee Simple Title	44.4100 Ha	1071366
Area A Deposited Plan 578555	Easement		



Record of Survey - DP 578555

Created Parcels

Parcels	Parcel Intent	Area	RT Reference
Area B Deposited Plan 578555	Easement		
Area C Deposited Plan 578555	Easement		
Area D Deposited Plan 578555	Easement		
Area E Deposited Plan 578555	Easement		
Total Area		<hr/> 46.3346 Ha	

Mark and Vector

Survey Number DP 578555

Meridional Circuit Hawkes Bay 2000

From	To	Code	Bearing	Adpt Surv	Bearing Correction	Distance	Adpt Surv	Class
SS 5 SO 4782	IT I DP 360914	ob37	248°24'10"	A DP 360914	0°00'00"	119.94 A	DP 360914	
IT I DP 360914	IT V DP 15170	ob38	248°24'10"	M		146.05 M		
IT V DP 15170	IS VI DP 15170	ob40	246°15'20"	M		141.34 M		
IS VI DP 15170	IS VII DP 15170	ob41	246°15'20"	A DP 360914	0°00'00"	154.71 A	DP 360914	
IS VII DP 15170	IT VIII DP 15170	ob42	246°15'20"	A DP 360914	0°00'00"	90.58 A	DP 360914	
IT VIII DP 15170	SS 5E SO 4782	ob43	245°32'55"	A DP 15170	0°00'00"	408.50 A	DP 15170	
IT I DP 360914	IS I DP 15170	ob39	75°25'00"	M		199.34 M		
IS I DP 15170	IT 2 DP 578555	ob44	90°43'30"	M		212.64 M		
IT 2 DP 578555	IS 1 DP 578555	ob46	89°40'10"	M		248.46 M		
IS 1 DP 578555	IT I DP 360914	ob49	265°43'20"	M		655.82 M		
IT 2 DP 578555	IT 3 DP 578555	ob47	160°26'00"	M		112.30 M		
IT 3 DP 578555	IS 1 DP 578555	ob53	63°02'20"	M		236.56 M		
IS 1 DP 578555	IT CXV SO 4629	ob50	79°19'00"	M		31.38 M		
IT CXV SO 4629	IS III SO 2418	ob56	270°00'00"	A SO 2418	0°00'00"	313.51 A	SO 2418	
IS III SO 2418	IT CXVI SO 4629	ob3	270°00'00"	A SO 2418	0°00'00"	116.64 A	SO 2418	
IT CXVI SO 4629	IS I DP 15170	ob0	265°46'37"	A DP 15170	0°00'00"	61.94 A	DP 15170	
IS I DP 15170	SS 5 SO 4782	ob45	265°46'37"	A DP 15170	0°00'00"	81.61 A	DP 15170	
PEG (2) SO 2418	PEG (3) SO 2418	ob4	336°58'50"	A SO 2418	0°00'00"	180.05 A	SO 2418	Class A
PEG (3) SO 2418	IS III SO 2418	ob6	336°58'50"	A SO 2418	0°00'00"	6.62 A	SO 2418	
IT CXV SO 4629	PEG (2) ML 858	ob57	189°54'00"	A SO 2418	0°00'00"	6.12 A	SO 2418	
PEG (2) ML 858	PEG (5) ML 858	ob7	269°59'00"	A SO 2418	0°00'00"	18.11 A	ML 858	
PEG (5) ML 858	PEG 10 DP 578555	ob8	269°59'00"	A SO 2418	0°00'00"	6.60 C		Class B
PEG 10 DP 578555	UNMK Y DP 360914	ob35	269°59'00"	A SO 2418	0°00'00"	127.58 C		Class B
UNMK Y DP 360914	UNMK X DP 360914	ob9	269°59'00"	A SO 2418	0°00'00"	4.28 A	DP 360914	Class B
UNMK X DP 360914	PEG 15 DP 578555	ob10	269°59'00"	A SO 2418	0°00'00"	77.94 C		Class B
PEG 15 DP 578555	PEG (5) SO 2418	ob34	269°59'00"	A SO 2418	0°00'00"	53.45 C		Class B
PEG (5) SO 2418	PEG (3) SO 2418	ob11	269°59'00"	A SO 2418	0°00'00"	21.83 A	DP 360914	Class B
PEG (7) SO 2418	PEG (4) SO 2418	ob12	89°57'00"	A SO 2418	0°00'00"	21.24 A	SO 2418	
PEG (4) SO 2418	PEG (3) SO 2418	ob13	89°59'00"	A SO 2418	0°00'00"	109.92 A	SO 2418	
PEG (6) SO 2418	PEG (2) SO 2418	ob14	67°00'00"	A SO 2418	0°00'00"	120.70 A	SO 2418	Class B
PEG (6) SO 2418	UNMK L DP 360914	ob15	156°58'40"	A SO 2418	0°00'00"	1.50 A	DP 360914	Class B
UNMK L DP 360914	PEG (1) ML 1037	ob61	156°58'40"	A SO 2418	0°00'00"	119.02 A	DP 360914	Class B
PEG (1) ML 1037	PEG (2) ML 1037	ob17	156°58'40"	A SO 2418	0°00'00"	31.64 A	SO 2418	Class B

Mark and Vector

Survey Number DP 578555

Meridional Circuit Hawkes Bay 2000

From	To	Code	Bearing	Adpt Surv	Bearing Correction	Distance	Adpt Surv	Class
PEG (2) ML 1037	PEG III ML 858	ob18	157°00'30"	A ML 1307	0°00'00"	82.88 A	ML 1307	Class B
PEG III ML 858	UNMK 20 DP 578555	ob19	157°00'30"	A ML 1307	0°00'00"	274.44 C		Class B
UNMK 20 DP 578555	UNMK 21 DP 578555	ob76	157°00'30"	A ML 1307	0°00'00"	14.54 C		Class B
UNMK 21 DP 578555	PEG (4) ML 1037	ob78	157°00'30"	A ML 1307	0°00'00"	11.44 C		Class B
PEG (4) ML 1037	PEG (3) ML 1037	ob20	157°00'30"	A ML 1307	0°00'00"	382.70 A	ML 858	Class B
PEG (3) ML 1037	PEG (7) ML 858	ob21	111°22'00"	A ML 858	-0°03'00"	52.65 A	ML 858	
PEG (7) ML 858	PEG (10) ML 858	ob23	164°22'00"	A ML 858	-0°03'00"	86.38 A	ML 858	
PEG (10) ML 858	PEG (8) ML 858	ob24	72°54'30"	A ML 858	-0°03'00"	133.23 A	ML 858	
PEG (8) ML 858	PEG (6) ML 858	ob25	120°53'00"	A ML 858	-0°03'00"	120.60 A	ML 858	
PEG (6) ML 858	PEG (11) ML 858	ob26	159°59'00"	A ML 858	-0°03'00"	74.75 A	ML 858	
PEG (11) ML 858	PEG (1) ML 858	ob27	72°24'00"	A ML 858	-0°03'00"	77.73 A	ML 858	
PEG (1) ML 858	PEG (4) ML 858	ob28	49°52'00"	A ML 858	-0°03'00"	65.38 A	ML 858	
PEG (4) ML 858	PEG (3) ML 858	ob29	20°45'00"	A ML 858	-0°03'00"	35.28 A	ML 858	
PEG (3) ML 858	PEG (5) ML 858	ob30	336°57'00"	A ML 858	-0°03'00"	1,255.29 A	ML 858	Class B
PEG (6) SO 2418	UNMK DP 26919	ob16	336°58'40"	A DP 26919	0°00'00"	37.81 A	DP 26919	
UNMK DP 26919	PEG (1) SO 2418	ob32	336°58'40"	A DP 26919	0°00'00"	78.95 A	DP 26919	
PEG (1) SO 2418	PEG (7) SO 2418	ob33	336°57'00"	A DP 26919	0°00'00"	114.47 A	DP 26919	
IT CXVI SO 4629	PEG (7) SO 2418	ob2	242°40'00"	A SO 2148	0°00'00"	13.42 A	SO 2148	
IT 3 DP 578555	PEG 14 DP 578555	ob54	5°24'00"	M		42.37 M		
IT 3 DP 578555	PEG 13 DP 578555	ob55	67°55'00"	M		44.42 M		
IS 1 DP 578555	PEG 12 DP 578555	ob51	154°01'00"	M		89.36 M		
IS 1 DP 578555	PEG 10 DP 578555	ob52	92°32'00"	M		5.07 M		
IT 2 DP 578555	PEG 15 DP 578555	ob48	88°28'00"	M		43.66 M		
PEG 10 DP 578555	PEG 12 DP 578555	ob36	156°57'00"	C		87.07 C		Class B
PEG 13 DP 578555	UNMK 32 DP 578555	ob60	87°12'00"	C		37.88 C		Class B
UNMK 32 DP 578555	UNMK 33 DP 578555	ob93	87°12'00"	C		2.24 C		Class B

Mark and Vector

Survey Number DP 578555

Meridional Circuit Hawkes Bay 2000

From	To	Code	Bearing	Adpt Surv	Bearing Correction	Distance	Adpt Surv	Class
UNMK 33 DP 578555	PEG 12 DP 578555	ob91	87°12'00"	C		168.96 C		Class B
PEG 14 DP 578555	PEG 13 DP 578555	ob58	124°26'00"	C		45.07 C		Class B
PEG 14 DP 578555	PEG 15 DP 578555	ob59	1°49'00"	C		64.84 C		Class B
UNMK L DP 360914	UNMK M DP 360914	ob62	67°00'00"	A DP 360914	0°00'00"	120.99 A DP 360914		Class B
UNMK M DP 360914	UNMK O DP 360914	ob63	45°12'10"	A DP 360914	0°00'00"	21.41 A DP 360914		Class B
UNMK O DP 360914	UNMK 33 DP 578555	ob64	45°12'10"	A DP 360914	0°00'00"	90.23 C		Class B
UNMK 33 DP 578555	UNMK P DP 360914	ob92	45°12'10"	A DP 360914	0°00'00"	64.06 C		Class B
UNMK P DP 360914	UNMK Q DP 360914	ob65	313°30'00"	A DP 360914	0°00'00"	1.55 A DP 360914		Class B
UNMK Q DP 360914	UNMK S DP 360914	ob66	43°30'00"	A DP 360914	0°00'00"	7.37 A DP 360914		Class B
UNMK S DP 360914	UNMK W DP 360914	ob67	313°30'00"	A DP 360914	0°00'00"	8.87 A DP 360914		Class B
UNMK W DP 360914	UNMK V DP 360914	ob68	223°30'00"	A DP 360914	0°00'00"	3.23 A DP 360914		Class B
UNMK V DP 360914	UNMK Y DP 360914	ob69	314°26'20"	A DP 360914	0°00'00"	47.21 A DP 360914		Class B
PEG (2) SO 2418	UNMK N DP 360914	ob5	45°12'10"	A DP 360914	0°00'00"	21.72 A DP 360914		Class B
UNMK N DP 360914	UNMK 32 DP 578555	ob70	45°12'10"	A DP 360914	0°00'00"	87.96 C		Class B
UNMK 32 DP 578555	UNMK R DP 360914	ob94	45°12'10"	A DP 360914	0°00'00"	64.19 C		Class B
UNMK R DP 360914	UNMK Q DP 360914	ob71	43°30'00"	A DP 360914	0°00'00"	1.50 A DP 360914		Class B
UNMK R DP 360914	UNMK T DP 360914	ob72	313°30'00"	A DP 360914	0°00'00"	8.87 A DP 360914		Class B
UNMK T DP 360914	UNMK U DP 360914	ob73	43°30'00"	A DP 360914	0°00'00"	2.64 A DP 360914		Class B
UNMK U DP 360914	UNMK V DP 360914	ob74	43°30'00"	A DP 360914	0°00'00"	3.00 A DP 360914		Class B
UNMK U DP 360914	UNMK X DP 360914	ob75	314°26'20"	A DP 360914	0°00'00"	50.31 A DP 360914		Class B
UNMK 20 DP 578555	UNMK 22 DP 578555	ob77	200°23'00"	C		117.19 C		Class B
UNMK 22 DP 578555	UNMK 23 DP 578555	ob79	215°34'00"	C		284.81 C		Class B
UNMK 23 DP 578555	UNMK 24 DP 578555	ob80	196°00'00"	C		48.23 C		Class B
UNMK 24 DP 578555	UNMK 25 DP 578555	ob81	161°58'00"	C		21.42 C		Class B

Mark and Vector

Survey Number DP 578555

Meridional Circuit Hawkes Bay 2000

From	To	Code	Bearing	Adpt Surv	Bearing Correction	Distance	Adpt Surv	Class
UNMK 25 DP 578555	UNMK 26 DP 578555	ob82	164°45'00"	C		10.19 C		Class B
UNMK 26 DP 578555	UNMK 27 DP 578555	ob83	74°45'00"	C		12.80 C		Class B
UNMK 27 DP 578555	UNMK 28 DP 578555	ob84	344°45'00"	C		10.19 C		Class B
UNMK 28 DP 578555	UNMK 29 DP 578555	ob85	333°37'00"	C		19.18 C		Class B
UNMK 29 DP 578555	UNMK 30 DP 578555	ob86	16°00'00"	C		43.45 C		Class B
UNMK 30 DP 578555	UNMK 31 DP 578555	ob87	35°34'00"	C		284.42 C		Class B
UNMK 31 DP 578555	UNMK 21 DP 578555	ob88	20°23'00"	C		107.94 C		Class B
PEG (3) ML 1037	UNMK ML 1037	ob22	157°00'30"	A	ML 1307	0°00'00"	46.27 A	ML 858 Class BD
PEG (3) ML 858	PEG (9) ML 858	ob31	212°55'00"	A	ML 858	-0°03'00"	31.22 A	ML 858 Class BD
PEG (9) ML 858	UNMK ML 858	ob89	212°55'00"	A	ML 858	-0°03'00"	14.04 A	ML 858 Class BD
UNMK ML 858	UNMK ML 1037	ob90	282°18'00"	C		432.52 C		

Mark Name	Mark Condition	Description
IS 1 DP 578555		-0.3m
IS I DP 15170		-0.3 in berm
IT 2 DP 578555		-0.3m
IT 3 DP 578555		-0.3m
IS III SO 2418	Searched For and Not Found	
IT CXVI SO 4629	Searched For and Not Found	
PEG (3) SO 2418	Searched For and Not Found	
PEG (5) ML 858	Searched For and Not Found	
SS 5 SO 4782	Searched For and Not Found	

*** End of Report ***

Schedule / Memorandum

Land Registration District

Hawkes Bay

Survey Number

LT 578555

Territorial Authority (the Council)

Tararua District

Schedule of Easements

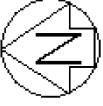
Last Edited: 17 Jun 2022 08:53:19

<u>Purpose</u>	<u>Shown</u>	<u>Burdened Land</u> (<u>Servient Tenement</u>)	<u>Benefited Land</u> (<u>Dominant Tenement</u>)
Right to convey water	A	Lot 2 DP 360914	Lot 2

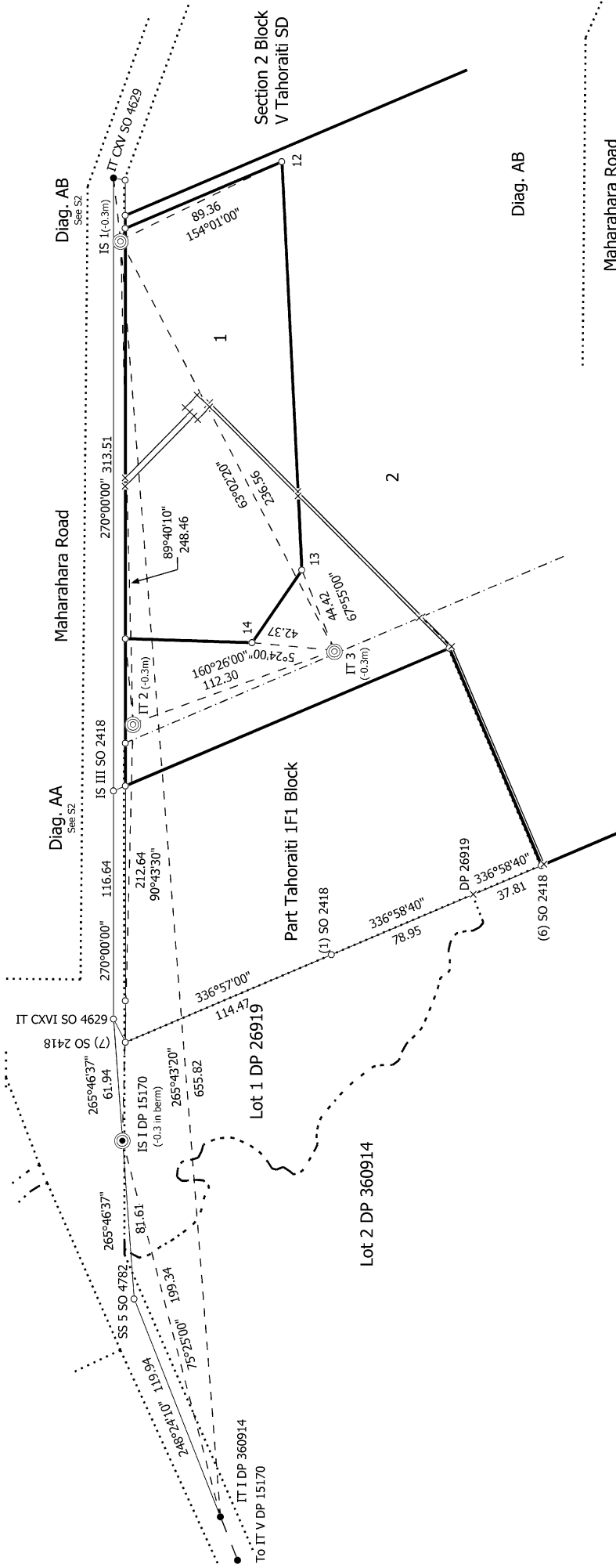
Schedule of Existing Easements

Last Edited: 17 Jun 2022 08:55:51

<u>Purpose</u>	<u>Shown</u>	<u>Burdened Land</u> (<u>Servient Tenement</u>)	<u>Creating Document Reference</u>
Right to convey electricity	B, C	Lot 1	EI 8919816.2
Right to convey water	C, D E	Lot 1 Lot 2	EI 8919816.2 EI 8919816.2



Diag. A

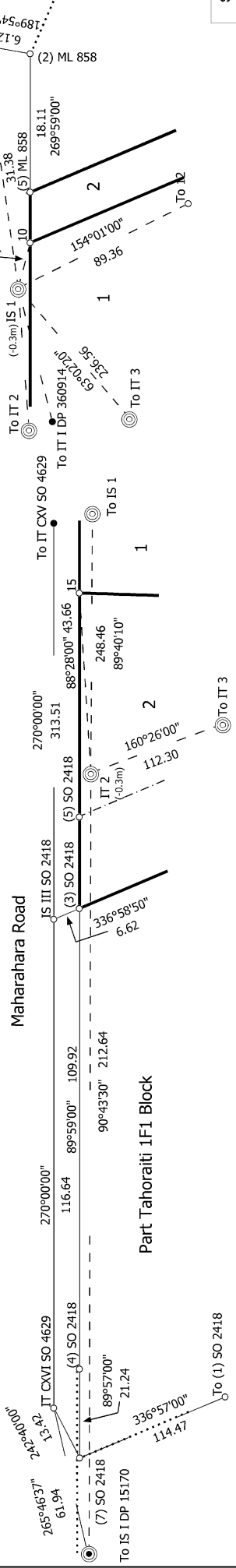


Diag. AA

Diag. AB

Diag. AA

Diag. AB



S 2/2

Land District: Hawkes Bay

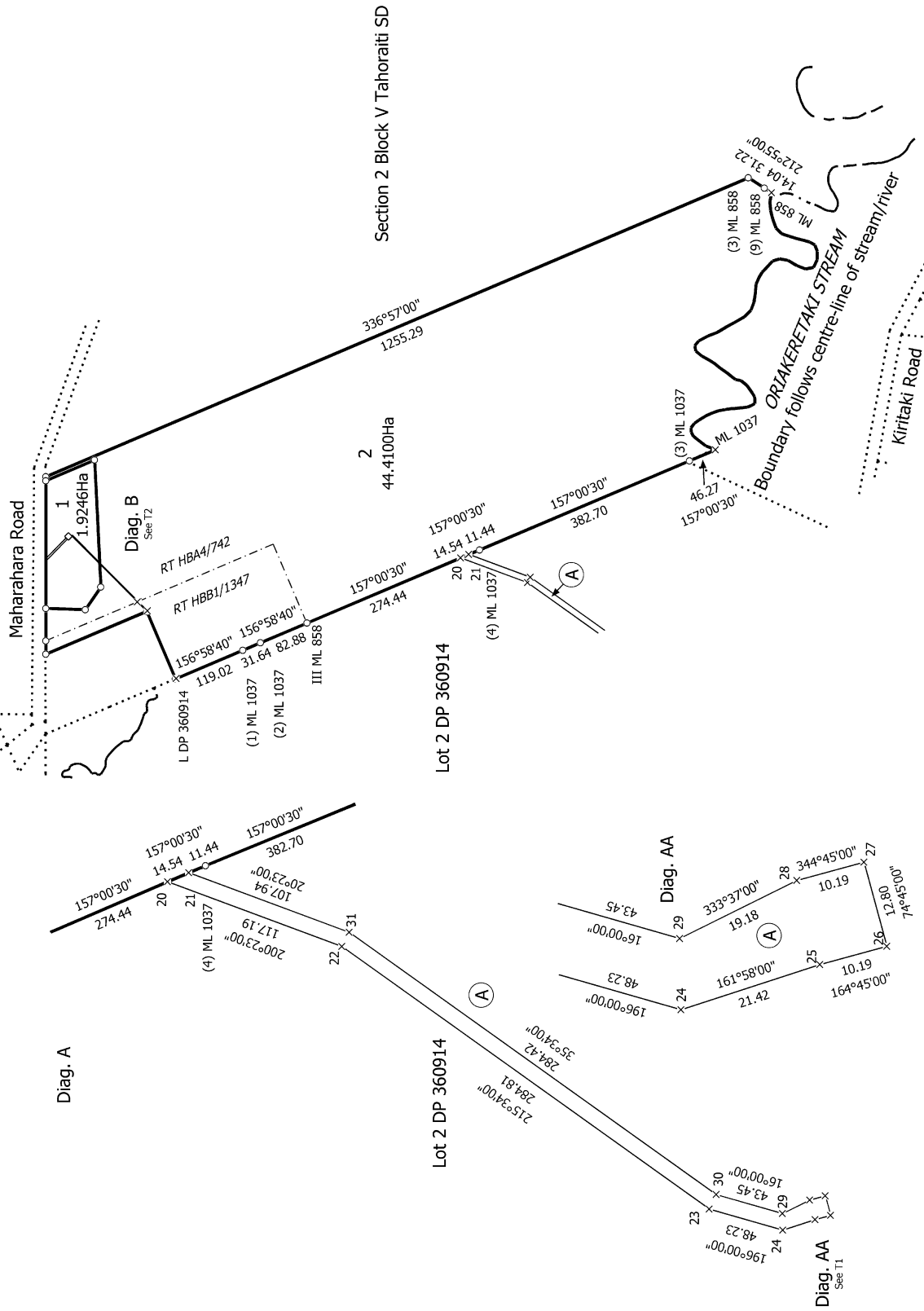
Digitally Generated Plan
Generated on: 31/07/2023 2:56pm Page 10 of 12

Lots 1 and 2 being a Subdivision of Tahoraiti 1F2 Block and Part Tahoraiti 1F1 Block and Easement over Lot 2 DP 360914

Surveyor: Scott Jay Becker
Firm: Survey Work Ltd
Date of Survey: 16/06/2022

Record of Survey
DP 578555

Deposited on: 12/07/2023



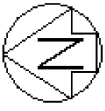
T 1/2

Lots 1 and 2 being a Subdivision of Tahoraiti 1F2 Block and Part Tahoraiti 1F1 Block and Easement over Lot 2 DP 360914

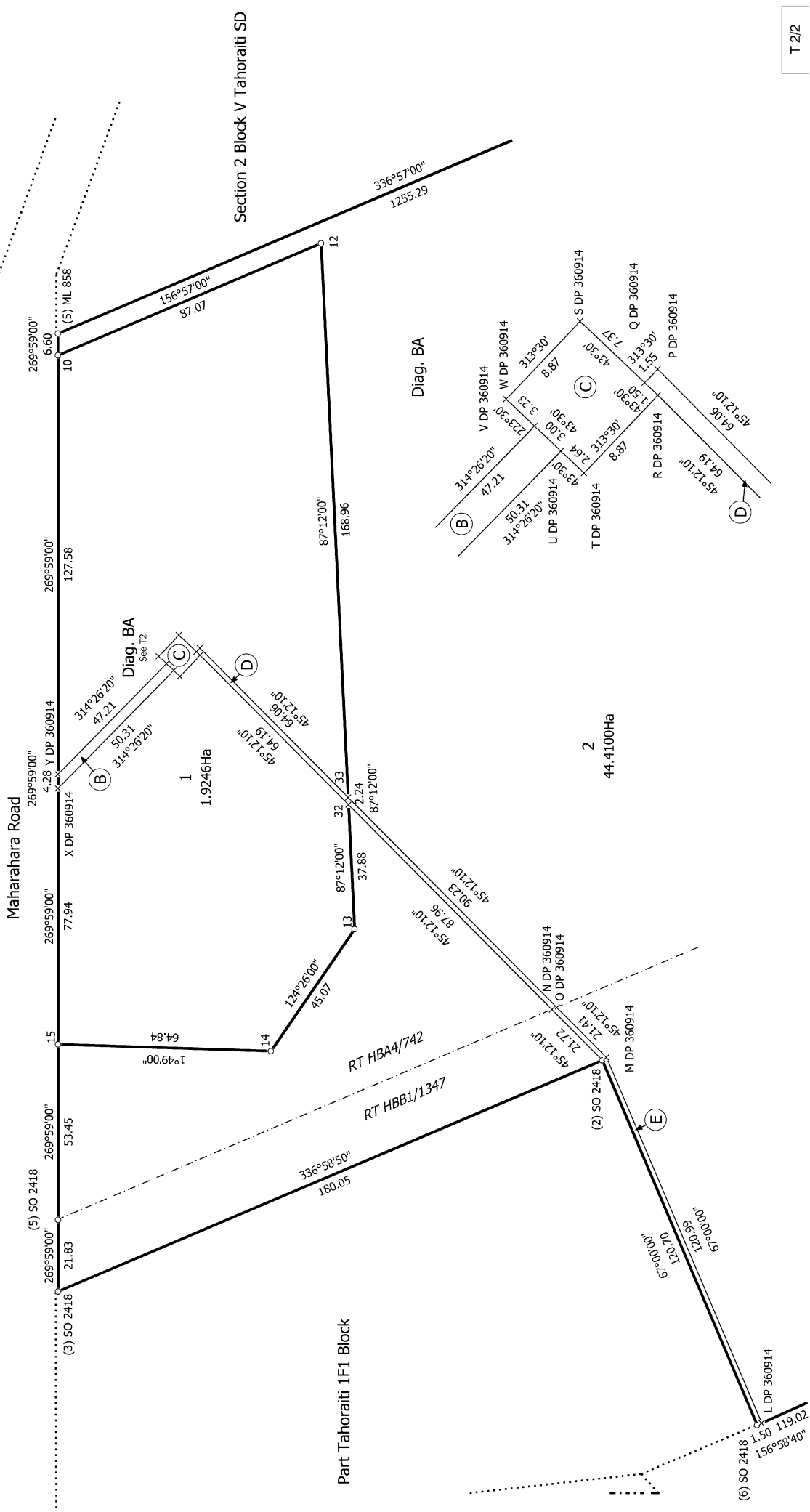
Surveyor: Scott Jay Becker
 Firm: Survey Wox Ltd
 Date of Survey: 16/06/2022

Land District: Hawkes Bay
Digitally Generated Plan
 Generated on: 31/07/2023 2:56pm Page 11 of 12

Record of Survey
 DP 578555
 Deposited on: 12/07/2023



Diag. B



T 2/2

Record of Survey
 DP 578555
 Deposited on: 12/07/2023

Surveyor: Scott Jay Becker
 Firm: Survey Worx Ltd
 Date of Survey: 16/06/2022

Lots 1 and 2 being a Subdivision of Tahoraiti 1F2 Block and Part Tahoraiti 1F1 Block and Easement over Lot 2 DP 360914

Land District: Hawkes Bay
 Digitally Generated Plan
 Generated on: 31/07/2023 2:56pm Page 12 of 12