



Record of Survey - DP 584986

Survey Number DP 584986
Surveyor Reference 22/048 Leever's
Surveyor John Butler Carruthers
Survey Firm Tomlinson and Carruthers Surveyors Limited
Surveyor Declaration I John Butler Carruthers, being a licensed cadastral surveyor, certify that--
(a) this dataset provided by me and its related survey are accurate, correct and in accordance with the Cadastral Survey Act 2002 and Cadastral Survey Rules 2021; and
(b) the survey was undertaken by me or under my personal direction.
Declared on 29 Nov 2022 08:49 AM

Survey Details

Dataset Description LOTS 1 TO 3 BEING SUBDIVISION OF LOT 5 DP 64400
Purpose LT Subdivision
Status Deposited **Type** Survey
Land District Wellington **Survey Class** Class B
Meridional Circuit Wairarapa 2000 **Vertical Datum** None

Survey Dates

Surveyed Date 28/09/2022 **Certified Date** 29/11/2022
Submitted Date 29/11/2022 08:49:37 **Survey Approval Date** 19/12/2022
Deposit Date 07/09/2023

Referenced Surveys

Survey Number	Land District	Bearing Correction
DP 12887	Wellington	0°00'00"
DP 64400	Wellington	0°00'00"
DP 87913	Wellington	0°00'00"
DP 457796	Wellington	0°00'00"
DP 535291	Wellington	0°00'00"

Territorial Authorities

Carterton District

Comprised In

RT WN34C/112

Created Parcels

Parcels	Parcel Intent	Area	RT Reference
Lot 1 Deposited Plan 584986	Fee Simple Title	1.1225 Ha	1101954
Lot 2 Deposited Plan 584986	Fee Simple Title	8.6932 Ha	1101955
Lot 3 Deposited Plan 584986	Fee Simple Title	1.3507 Ha	1101956
Area A Deposited Plan 584986	Easement		
Area B Deposited Plan 584986	Easement		
Area C Deposited Plan 584986	Easement		
Total Area		11.1664 Ha	

Mark and Vector

Survey Number DP 584986

Meridional Circuit Wairarapa 2000

From	To	Code	Bearing	Adpt Surv	Bearing Correction	Distance	Adpt Surv	Class
WAINGAWA	RM 3 DP 64400	ob0	325°53'41" M			2,479.33 M		
RM 3 DP 64400	IT I DP 457796	ob5	69°19'30" M			273.53 M		
IT I DP 457796	WAINGAWA	ob6	152°10'40" M			2,430.40 M		
WAINGAWA	IT V DP 12887	ob1	328°27'12" M			2,009.09 M		
IT V DP 12887	IT XV DP 64400	ob8	315°23'30" M			179.70 M		
IT XV DP 64400	RM 4 DP 64400	ob19	315°23'30" A	DP 64400	0°00'00"	102.14 A	DP 64400	
RM 4 DP 64400	RM 3 DP 64400	ob10	314°47'00" A	DP 64400	0°00'00"	198.85 A	DP 64400	
WAINGAWA	IT I DP 584986	ob2	332°14'14" M			2,307.35 M		
WAINGAWA	IT XV DP 64400	ob3	327°23'20" M			2,184.51 M		
WAINGAWA	IT VIII DP 64400	ob4	336°44'16" M			2,308.19 M		
IT V DP 12887	IT XXI DP 12887	ob9	68°00'20" A	DP 64400	0°00'00"	319.35 A	DP 64400	
IT XXI DP 12887	IT X DP 64400	ob21	307°12'20" A	DP 64400	0°00'00"	95.15 A	DP 64400	
IT X DP 64400	IT IX DP 64400	ob23	323°27'00" A	DP 64400	0°00'00"	133.01 A	DP 64400	
IT IX DP 64400	IT VIII DP 64400	ob24	359°14'00" A	DP 64400	0°00'00"	124.45 A	DP 64400	
IT VIII DP 64400	IS VII DP 64400	ob51	32°42'40" A	DP 64400	0°00'00"	86.45 A	DP 64400	
IS VII DP 64400	IT VI DP 64400	ob45	11°11'00" A	DP 64400	0°00'00"	215.24 A	DP 64400	
IT VI DP 64400	IT V DP 64400	ob46	350°30'00" A	DP 64400	0°00'00"	193.71 A	DP 64400	
IT V DP 64400	IT IV DP 64400	ob48	230°31'00" A	DP 64400	0°00'00"	196.66 A	DP 64400	
IT IV DP 64400	IT III DP 64400	ob49	230°31'00" A	DP 64400	0°00'00"	152.34 A	DP 64400	
IT III DP 64400	IT I DP 457796	ob50	182°29'00" A	DP 457796	0°00'00"	224.32 A	DP 457796	
IT I DP 584986	IT VIII DP 64400	ob11	64°13'00" M			181.25 M		
IT I DP 584986	IT II DP 584986	ob12	236°29'45" M			131.81 M		
IT II DP 584986	IT XV DP 64400	ob25	176°43'00" M			129.07 M		
IT II DP 584986	RM 3 DP 64400	ob26	292°13'00" M			221.96 M		
IT I DP 584986	IT I DP 457796	ob13	331°06'00" M			123.09 M		
IT I DP 584986	RM 3 DP 64400	ob14	272°01'30" M			315.56 M		
IT I DP 584986	IT V DP 12887	ob15	175°53'30" M			330.40 M		
IT I DP 584986	IT XV DP 64400	ob16	206°57'00" M			226.16 M		
IT XV DP 64400	PEG (1) DP 64400	ob20	42°33'00" A	DP 64400	0°00'00"	8.68 A	DP 64400	
PEG (1) DP 64400	POST DP 64400	ob52	47°56'00" A	DP 64400	0°00'00"	217.58 A	DP 64400	Class B
POST DP 64400	POST DP 87913	ob53	48°58'00" A	DP 87913	0°00'00"	136.52 A	DP 87913	Class B
POST DP 87913	IT IX DP 64400	ob54	182°03'00" A	DP 87913	0°00'00"	85.79 A	DP 87913	
IT XXI DP 12887	IT XI DP 50300	ob22	48°59'10" A	DP 64400	0°00'00"	220.02 A	DP 64400	
IT XI DP 50300	IT XI DP 64400	ob56	46°40'00" A	DP 64400	0°00'00"	53.68 A	DP 64400	
IT XI DP 64400	IT XII DP 64400	ob57	297°37'00" A	DP 64400	0°00'00"	162.49 A	DP 64400	

Mark and Vector

Survey Number DP 584986

Meridional Circuit Wairarapa 2000

From	To	Code	Bearing	Adpt Surv	Bearing Correction	Distance	Adpt Surv	Class
IT XII DP 64400	IT XIII DP 64400	ob58	339°42'30"	A DP 64400	0°00'00"	207.48 A	DP 64400	
IT XIII DP 64400	IT XIV DP 64400	ob59	1°14'00"	A DP 64400	0°00'00"	85.88 A	DP 64400	
IT XIV DP 64400	IT VI DP 64400	ob60	301°09'00"	A DP 64400	0°00'00"	69.17 A	DP 64400	
POST DP 87913	PEG (5) DP 64400	ob55	44°03'00"	A DP 87913	0°00'00"	198.35 A	DP 87913	Class BD
PEG (5) DP 64400	IT XIII DP 64400	ob74	3°04'00"	A DP 64400	0°00'00"	58.53 A	DP 64400	
IT VI DP 64400	PEG (2) DP 64400	ob47	55°43'00"	A DP 64400	0°00'00"	39.88 A	DP 64400	
PEG (2) DP 64400	PEG (3) DP 64400	ob61	229°09'00"	A DP 64400	0°00'00"	125.00 A	DP 64400	Class B
PEG (3) DP 64400	UNMK 16 DP 457796	ob63	229°09'00"	A DP 64400	0°00'00"	195.00 A	DP 457796	Class B
UNMK 16 DP 457796	PEG 1 DP 457796	ob70	229°09'00"	A DP 64400	0°00'00"	104.13 A	DP 457796	Class B
PEG 1 DP 457796	DISK 1 DP 584986	ob71	229°09'00"	A DP 64400	0°00'00"	17.72 C		Class B
DISK 1 DP 584986	PEG (4) DP 64400	ob73	229°09'00"	A DP 64400	0°00'00"	182.10 C		Class B
PEG (4) DP 64400	IT DP 12887	ob64	352°57'00"	A DP 64400	0°00'00"	98.38 A	DP 64400	
IT DP 12887	IT I DP 64400	ob66	355°04'00"	A DP 64400	0°00'00"	82.70 A	DP 64400	
IT I DP 64400	IT II DP 64400	ob67	27°01'00"	A DP 64400	0°00'00"	140.67 A	DP 64400	
IT II DP 64400	IT III DP 64400	ob68	62°00'20"	A DP 64400	0°00'00"	105.25 A	DP 64400	
PEG (2) DP 64400	UNMK DP 64400	ob62	49°09'00"	A DP 64400	0°00'00"	20.00 A	DP 64400	Class BD
UNMK DP 64400	IT VI DP 64400	ob69	233°31'30"	A DP 457796	0°00'00"	59.79 A	DP 457796	
PEG (4) DP 64400	PEG 2 DP 584986	ob65	178°51'00"	A DP 12887	0°00'00"	21.26 C		Class B
PEG 2 DP 584986	PEG DP 12887	ob75	178°51'00"	A DP 12887	0°00'00"	62.19 C		Class B
PEG DP 12887	UNMK 23 DP 584986	ob72	134°57'00"	A DP 12887	0°00'00"	20.54 C		Class B
UNMK 23 DP 584986	UNMK 24 DP 584986	ob103	134°57'00"	A DP 12887	0°00'00"	2.05 C		Class B
UNMK 24 DP 584986	POST 3 DP 584986	ob104	134°57'00"	A DP 12887	0°00'00"	81.53 C		Class B
POST 3 DP 584986	PEG 4 DP 584986	ob76	134°57'00"	A DP 12887	0°00'00"	7.85 C		Class B
PEG 4 DP 584986	PEG (1) DP 64400	ob78	134°57'00"	A DP 12887	0°00'00"	13.91 C		Class B
PEG 4 DP 584986	PEG 5 DP 584986	ob79	16°35'00"	C		18.39 C		Class B

Mark and Vector

Survey Number DP 584986

Meridional Circuit Wairarapa 2000

From	To	Code	Bearing	Adpt Surv	Bearing Correction	Distance	Adpt Surv	Class
PEG 5 DP 584986	DISK 6 DP 584986	ob80	27°14'00"	C		26.91 C		Class B
DISK 6 DP 584986	PEG 7 DP 584986	ob81	330°44'00"	C		37.92 C		Class B
PEG 7 DP 584986	PEG 8 DP 584986	ob82	26°19'00"	C		22.06 C		Class B
PEG 8 DP 584986	PEG 9 DP 584986	ob83	323°59'20"	C		58.58 C		Class B
PEG 9 DP 584986	UNMK 14 DP 584986	ob85	269°25'20"	C		13.36 C		Class B
UNMK 14 DP 584986	UNMK 21 DP 584986	ob91	269°25'20"	C		16.42 C		Class B
UNMK 21 DP 584986	UNMK 22 DP 584986	ob99	269°25'20"	C		2.00 C		Class B
UNMK 22 DP 584986	PEG 2 DP 584986	ob101	269°25'20"	C		23.05 C		Class B
PEG 8 DP 584986	PEG 10 DP 584986	ob84	31°18'00"	C		34.18 C		Class B
PEG 10 DP 584986	DISK 11 DP 584986	ob87	55°21'40"	C		101.27 C		Class B
DISK 11 DP 584986	PEG 12 DP 584986	ob88	332°10'00"	C		35.88 C		Class B
PEG 12 DP 584986	DISK 1 DP 584986	ob89	332°10'00"	C		77.68 C		Class B
PEG 9 DP 584986	PEG 13 DP 584986	ob86	87°19'00"	C		17.03 C		Class B
PEG 13 DP 584986	PEG 12 DP 584986	ob90	55°21'20"	C		123.69 C		Class B
POST 3 DP 584986	POST 15 DP 584986	ob77	25°18'00"	C		17.06 C		Class B
POST 15 DP 584986	PEG 16 DP 584986	ob92	4°20'00"	C		22.36 C		Class B
PEG 16 DP 584986	PEG 17 DP 584986	ob93	332°11'00"	C		32.16 C		Class B
PEG 17 DP 584986	PEG 18 DP 584986	ob95	32°47'00"	C		19.33 C		Class B
PEG 18 DP 584986	PEG 19 DP 584986	ob96	355°57'00"	C		10.07 C		Class B
PEG 19 DP 584986	POST 20 DP 584986	ob97	325°31'00"	C		44.93 C		Class B
POST 20 DP 584986	UNMK 14 DP 584986	ob98	299°26'00"	C		13.47 C		Class B
UNMK 21 DP 584986	UNMK 25 DP 584986	ob100	182°27'00"	C		17.15 C		Class B
UNMK 25 DP 584986	UNMK 26 DP 584986	ob105	168°57'00"	C		38.71 C		Class B
UNMK 26 DP 584986	UNMK 24 DP 584986	ob106	211°59'00"	C		27.40 C		Class B

Mark and Vector

Survey Number DP 584986

Meridional Circuit Wairarapa 2000

From	To	Code	Bearing	Adpt Surv	Bearing Correction	Distance	Adpt Surv	Class
UNMK 22 DP 584986	UNMK 27 DP 584986	ob102	182°28'00"	C		17.28 C		Class B
UNMK 27 DP 584986	UNMK 28 DP 584986	ob107	168°57'00"	C		38.16 C		Class B
UNMK 28 DP 584986	UNMK 23 DP 584986	ob108	211°59'00"	C		26.15 C		Class B
IT II DP 584986	IT VIII DP 64400	ob27	60°58'10"	M		312.34 M		
IT II DP 584986	IT I DP 457796	ob28	15°36'00"	M		187.43 M		
IT II DP 584986	PEG 5 DP 584986	ob29	174°48'00"	M		95.42 M		
IT II DP 584986	DISK 6 DP 584986	ob30	163°35'20"	M		74.12 M		
IT I DP 584986	DISK 11 DP 584986	ob17	141°39'00"	M		5.41 M		
IT I DP 584986	PEG 12 DP 584986	ob18	334°01'00"	M		30.58 M		
IT I DP 457796	DISK 1 DP 584986	ob7	139°32'00"	M		15.19 M		
IT II DP 584986	PEG 10 DP 584986	ob31	69°54'00"	M		31.88 M		
IT II DP 584986	PEG 8 DP 584986	ob32	146°16'00"	M		21.94 M		
IT II DP 584986	PEG 7 DP 584986	ob33	176°23'00"	M		38.10 M		
IT II DP 584986	PEG 4 DP 584986	ob34	178°17'00"	M		112.71 M		
IT II DP 584986	POST 3 DP 584986	ob35	181°09'40"	M		107.13 M		
IT II DP 584986	POST 15 DP 584986	ob36	176°48'20"	M		91.83 M		
IT II DP 584986	PEG 16 DP 584986	ob37	174°24'00"	M		69.73 M		
IT II DP 584986	PEG 17 DP 584986	ob38	191°19'00"	M		41.76 M		
IT II DP 584986	PEG 18 DP 584986	ob39	174°45'00"	M		24.80 M		
IT II DP 584986	PEG 19 DP 584986	ob40	173°57'00"	M		14.74 M		
IT II DP 584986	PEG 13 DP 584986	ob41	350°04'00"	M		30.39 M		
IT II DP 584986	PEG 9 DP 584986	ob42	322°38'00"	M		36.66 M		
IT II DP 584986	POST 20 DP 584986	ob43	313°09'00"	M		32.73 M		
IT II DP 584986	PEG 2 DP 584986	ob44	290°20'40"	M		82.21 M		

Mark and Vector

Survey Number DP 584986

Meridional Circuit Wairarapa 2000

From	To	Code	Bearing	Adpt Surv	Bearing Correction	Distance	Adpt Surv	Class
PEG 16 DP 584986	DISK 6 DP 584986	ob94	96°54'00" C			14.24 C		Class B

Mark Name	Mark Condition	Description
IT I DP 457796		0.1m deep
IT I DP 584986		0.2m deep, 1m to fce
IT II DP 584986		0.2m deep, 1m to fce
RM 3 DP 64400		boxed mark under steel lid

*** End of Report ***

Schedule / Memorandum

Land Registration District

Wellington

Survey Number

LT 584986

Territorial Authority (the Council)

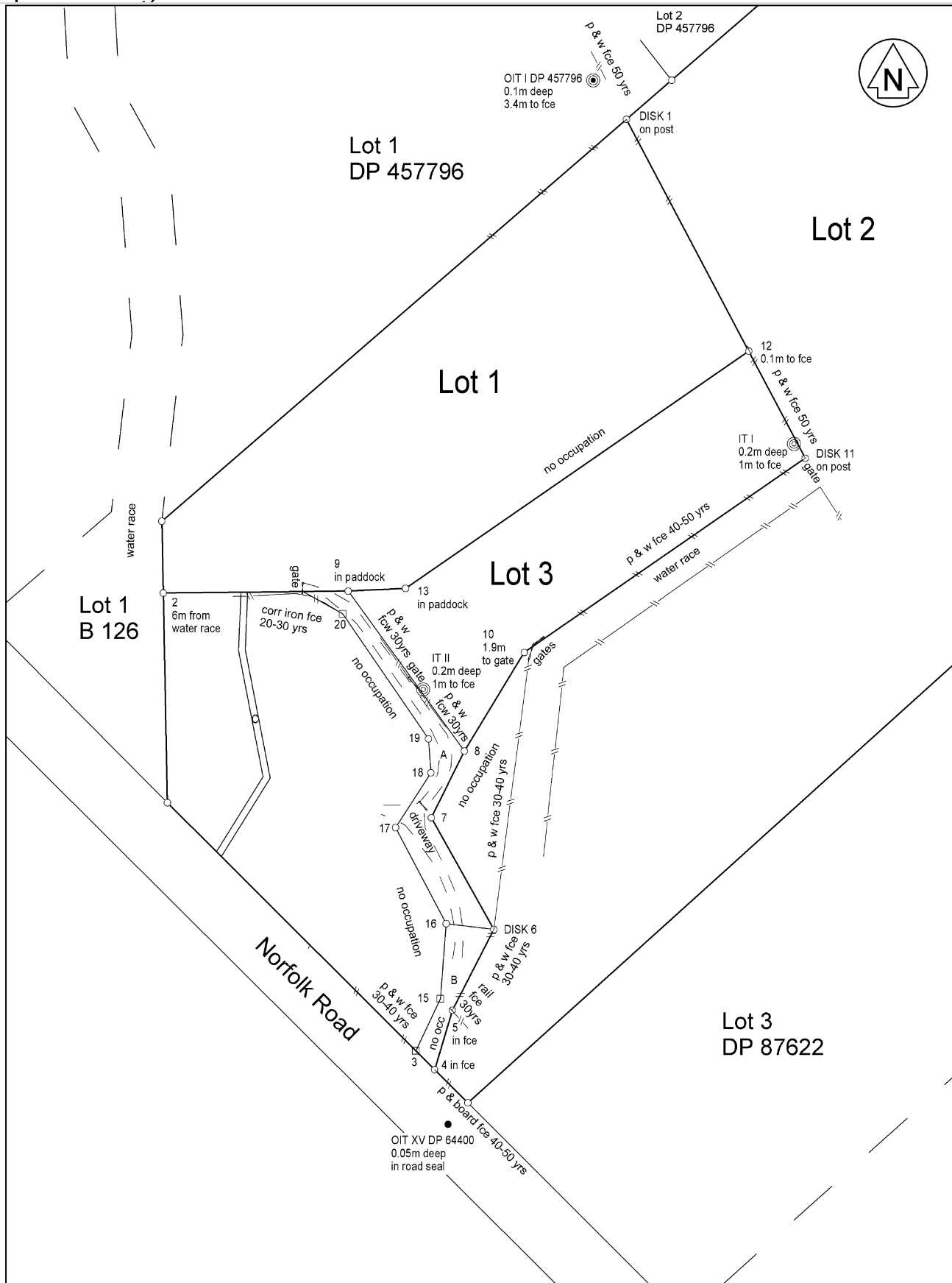
Carterton District

Schedule of Easements

Last Edited: 11 Nov 2022 17:07:36

<u>Purpose</u>	<u>Shown</u>	<u>Burdened Land</u> (<u>Servient Tenement</u>)	<u>Benefited Land</u> (<u>Dominant Tenement</u>)
Right of Way	A B	Lot 3 Lot 3	Lot 1 Lot 1, Lot 2
Right to convey electricity	C	Lot 3	Lot 1

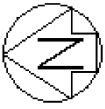
Occupation Diagram



TOMLINSON & CARRUTHERS
SURVEYORS
 16 Perry Street, PO Box 246, Masterton 5840
 Ph: 06 - 3700 820
 Email: mail@tcsurvey.co.nz

OCCUPATION DIAGRAM FOR DP 584986

Prepared for:	
Drawn Date:	Wed Nov 16 09:29:23 2022
Comprised in:	
Territorial Authority:	
Scale: 1:1000 @ A3	Ref #: 22/048



Diag. AC

Lot 2 DP 457796

Diag. AB

Lot 1 DP 457796

To IT III DP 64400

224.32

182°29'

69°15'30"

273.53

15°36'

187.43

139°32'

15.19

DISK 1

To RM 3 DP 64400

To IT II

IT I DP 457796

(0.1m deep)

331°06'

123.09

334°01'

30.58

To IT VIII DP 64400

To IT IX DP 64400

To IT X DP 64400

To IT XI DP 64400

To IT XII DP 64400

To IT XIII DP 64400

To IT XIV DP 64400

To IT XV DP 64400

To IT XVI DP 64400

To IT XVII DP 64400

To IT XVIII DP 64400

To IT XIX DP 64400

To IT XX DP 64400

To IT XXI DP 64400

To IT XXII DP 64400

To IT XXIII DP 64400

To IT XXIV DP 64400

To IT XXV DP 64400

To IT XXVI DP 64400

To IT XXVII DP 64400

To IT XXVIII DP 64400

To IT XXIX DP 64400

To IT XXX DP 64400

To IT XXXI DP 64400

To IT XXXII DP 64400

To IT XXXIII DP 64400

To IT XXXIV DP 64400

To IT XXXV DP 64400

To IT XXXVI DP 64400

To IT XXXVII DP 64400

To IT XXXVIII DP 64400

To IT XXXIX DP 64400

To IT XL DP 64400

Lot 1 DP 457796

To IT V DP 64400

193.71

350°30'

55°43'

36.88

(2) DP 64400

IT VI DP 64400

To IT VII DP 64400

11°11'

215.24

To IS VII DP 64400

17°16'

61.11

30°10'30"

17.66

To IT XIV DP 64400

IT XIII DP 64400

58.53

3°04'

1°14'

85.88

To IT XII DP 64400

IT XIII DP 64400

339°42'30"

207.48

(5) DP 64400

To IT XI DP 64400

Lot 3 DP 87622

To IT XII DP 64400

22/048

Waingawa River

The boundary is the 1m high right bank of the river adopted from DP 64400

Waingawa River

Waingawa River

Waingawa River

Waingawa River

Waingawa River

Waingawa River

Waingawa River

Waingawa River

Waingawa River

Waingawa River

Waingawa River

Waingawa River

Waingawa River

Waingawa River

Waingawa River

Waingawa River

Waingawa River

LOTS 1 TO 3 BEING SUBDIVISION OF LOT 5 DP 64400

Land District: Wellington

Digitally Generated Plan

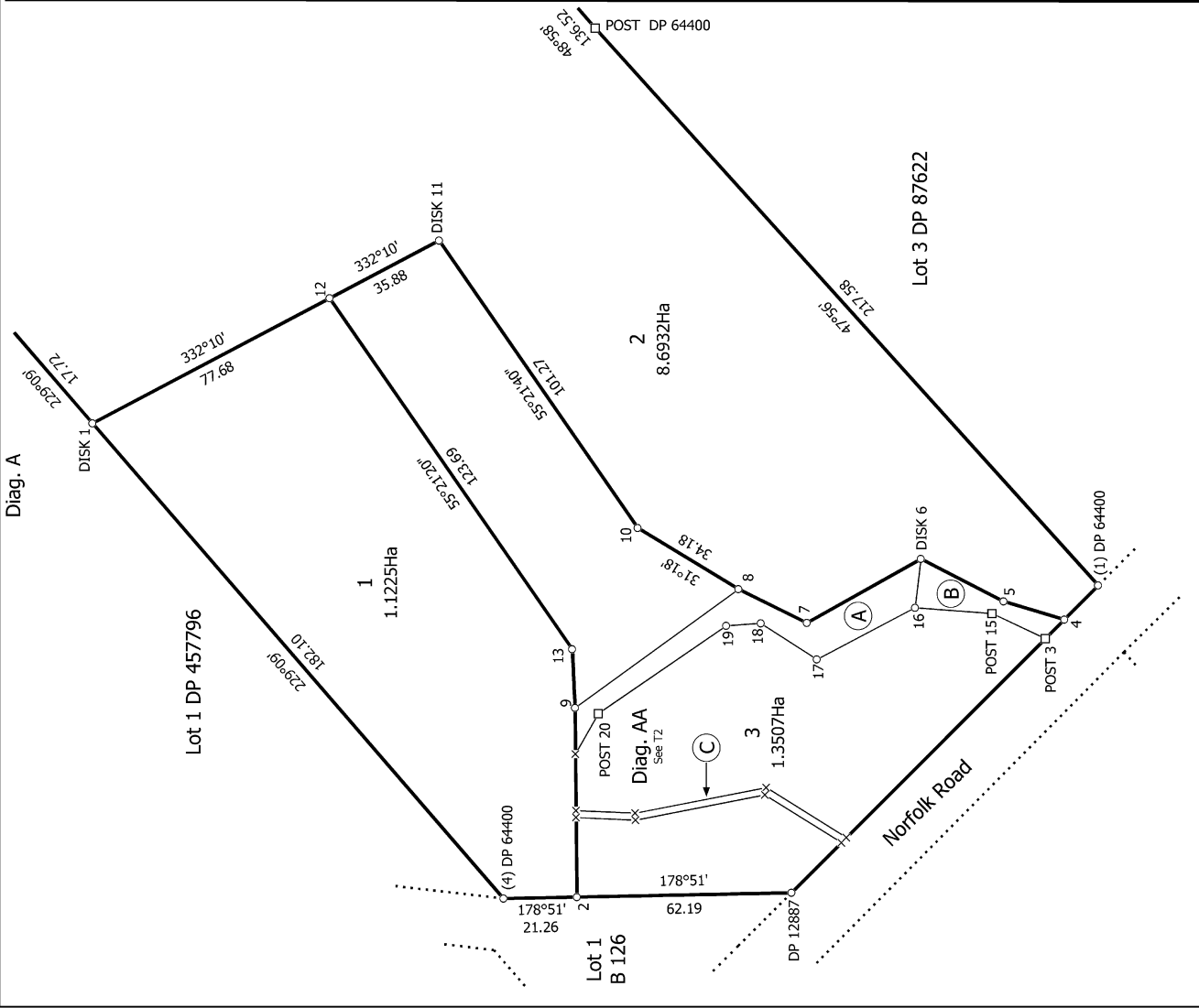
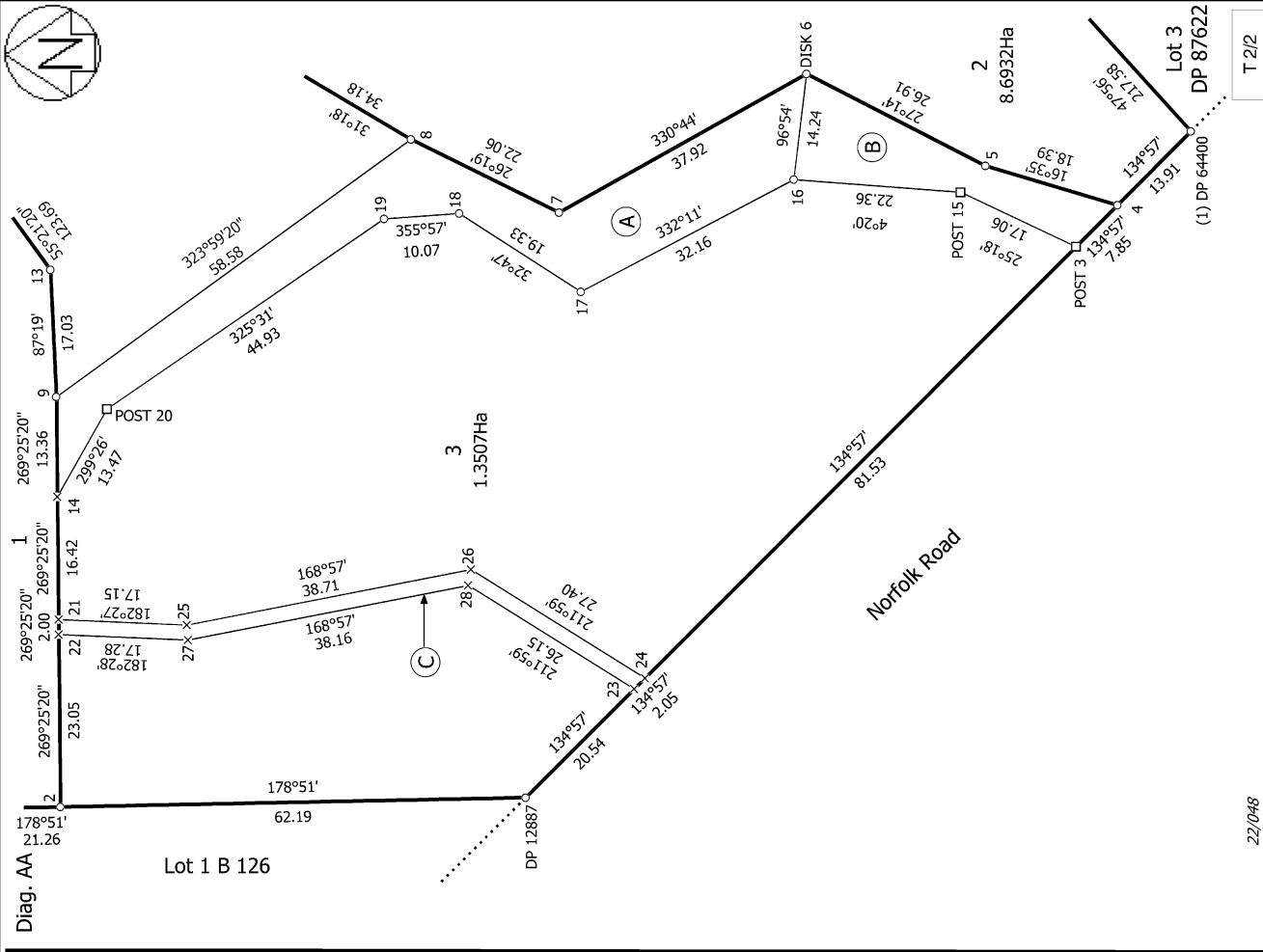
Generated on: 15/09/2023 09:52:00 Page 11 of 13

Record of Survey DP 584986

Surveyor: John Butler Carruthers
Firm: Tomlinson and Carruthers Surveyors
Date of Survey: 28/09/2022

Deposited on: 7/09/2023

S 3/3



22/048

T 2/2

<p>Land District: Wellington</p>	<p>Record of Survey DP 584986</p>	<p>Surveyor: John Butler Carruthers Firm: Tomlinson and Carruthers Surveyors Date of Survey: 28/09/2022</p>
<p>LOTS 1 TO 3 BEING SUBDIVISION OF LOT 5 DP 64400</p>		
<p>Digitally Generated Plan Generated on: 15/09/2023 09:52:00 Page 13 of 13</p>		
<p>Deposited on: 7/09/2023</p>		