



# Record of Survey - ML 601373

---

**Survey Number** ML 601373  
**Surveyor Reference** 4879 Te hiiri Marae  
**Surveyor** William Louden Riordan  
**Survey Firm** Truebridge Associates Ltd (Feilding)  
**Surveyor Declaration** I William Louden Riordan, being a licensed cadastral surveyor, certify that--  
(a) this dataset provided by me and its related survey are accurate, correct and in accordance with the Cadastral Survey Act 2002 and Cadastral Survey Rules 2021; and  
(b) the survey was undertaken by me or under my personal direction.  
Declared on 20 Jun 2024 10:21 AM

---

## Survey Details

**Dataset Description** Reu Reu 2G No 1B Block with Te Hiiri Marae Reservation being a Māori Reservation over part thereon  
**Purpose** Partition  
**Status** Approved as to Survey  
**Land District** Wellington  
**Meridional Circuit** Wanganui 2000

**Type** Parcels without Survey Information  
**Survey Class** Class B  
**Vertical Datum** None

---

## Survey Dates

**Surveyed Date** 20/03/2024  
**Submitted Date** 20/06/2024 10:21:05  
**Deposit Date**

**Certified Date** 20/06/2024  
**Survey Approval Date** 20/06/2024

---

## Referenced Surveys

Survey Number	Land District	Bearing Correction
ML 3973	Wellington	0°00'00"
ML 399097	Wellington	0°00'00"
ML 585135	Wellington	0°00'00"

---

## Territorial Authorities

Manawatu District

---

## Comprised In

RT 443016

---

## Created Parcels

Parcels	Parcel Intent	Area	RT Reference
Te Hiiri Marae Reservation Maori Land Plan 601373	Maori	1.1817 Ha	
Reu Reu 2G 1B Block Maori Land Plan 601373	Maori	4.7568 Ha	
<b>Total Area</b>		<b>5.9385 Ha</b>	

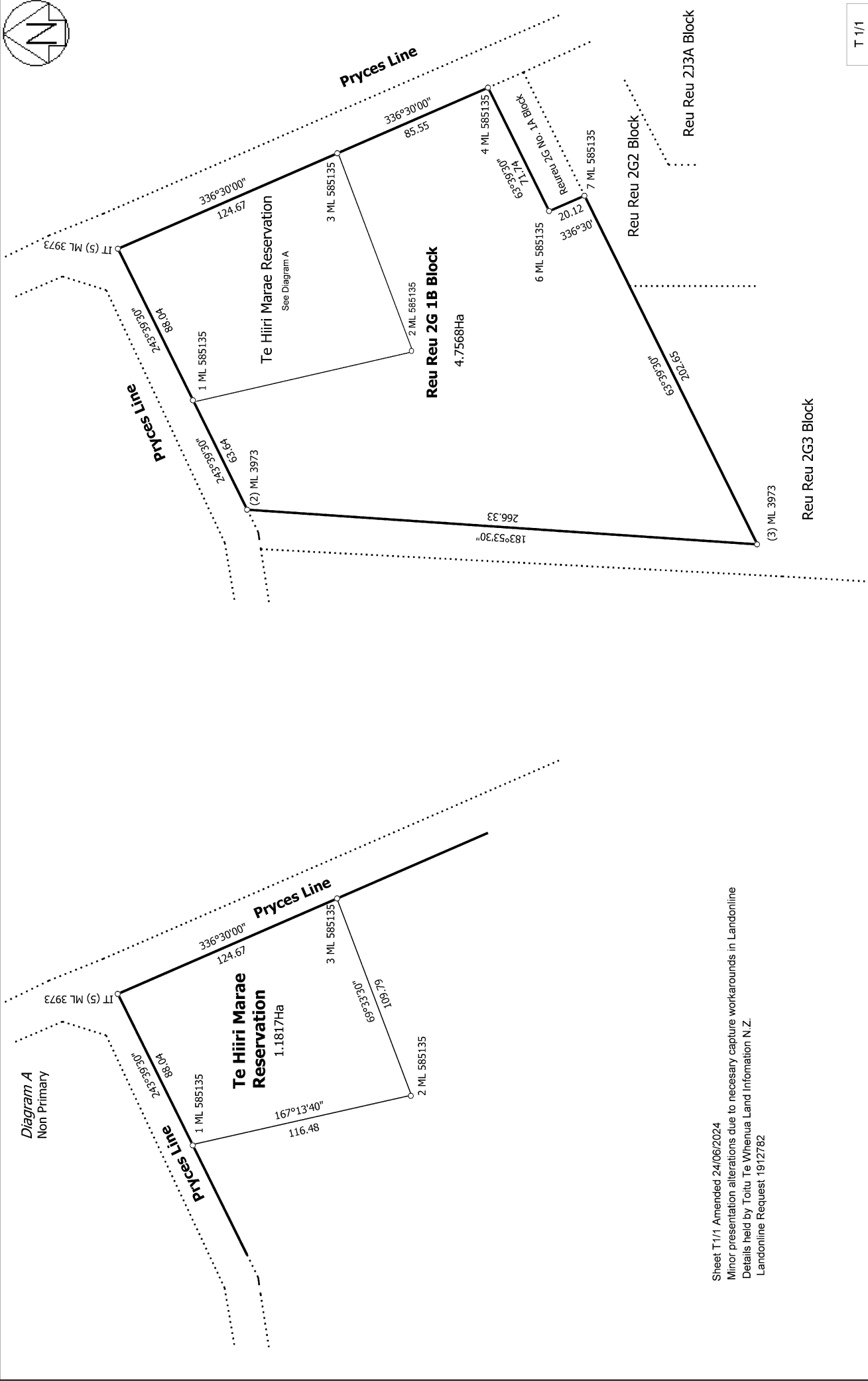
# Mark and Vector

Survey Number ML 601373

Meridional Circuit Wanganui 2000

From	To	Code	Bearing	Adpt Surv	Bearing Correction	Distance	Adpt Surv	Class
IT (5) ML 3973	PEG 1 ML 585135	ob3	243°39'30"	A ML 3973	0°00'00"	88.04 A	ML 585135	Class B
PEG 1 ML 585135	PEG 2 ML 585135	ob8	167°13'40"	A ML 585135	0°00'00"	116.48 A	ML 585135	Class B
PEG 2 ML 585135	PEG 3 ML 585135	ob7	69°33'30"	A ML 585135	0°00'00"	109.79 A	ML 585135	Class B
PEG 3 ML 585135	IT (5) ML 3973	ob6	336°30'00"	A ML 3973	0°00'00"	124.67 A	ML 585135	Class B
PEG 1 ML 585135	PEG (2) ML 3973	ob9	243°39'30"	A ML 3973	0°00'00"	63.64 A	ML 3973	Class B
PEG (2) ML 3973	PEG (3) ML 3973	ob5	183°53'30"	A ML 3973	0°00'00"	266.33 A	ML 3973	Class B
PEG (3) ML 3973	PEG 7 ML 585135	ob4	63°39'30"	A ML 3973	0°00'00"	202.65 A	ML 399097	Class B
PEG 7 ML 585135	PEG 6 ML 585135	ob1	336°30'00"	A ML 399097	0°00'00"	20.12 A	ML 399097	Class B
PEG 6 ML 585135	PEG 4 ML 585135	ob0	63°39'30"	A ML 399097	0°00'00"	71.74 A	ML 399097	Class B
PEG 4 ML 585135	PEG 3 ML 585135	ob2	336°30'00"	A ML 3973	0°00'00"	85.55 A	ML 585135	Class B

\*\*\* End of Report \*\*\*



T 1/1

Sheet T1/1 Amended 24/06/2024  
 Minor presentation alterations due to necessary capture workarounds in Landonline  
 Details held by Toitu Te Whenua Land Information N.Z.  
 Landonline Request 1912782

<p>Land District: Wellington          Dataset Type: Parcels without Survey Information  <b>Digitally Generated Plan</b>          Generated on: 01/07/2024 1:37pm Page 3 of 3</p>	<p><b>Reu Reu 2G No 1B Block with Te Hiiri Marae Reservation being a Maori Reservation over part thereon</b></p>	<p>Surveyor: William Loudon Flordan          Firm: Truebridge Associates Ltd (Feilding)          Date of Survey: 20/03/2024</p>	<p>Record of Survey  <b>ML 601373</b>          Approved on: 20/06/2024</p>
--	--	---	--