



Management Plan

Alexandra River Clutha Walking Tracking Risk Tree Assessment



Prepared for LINZ

9 December 2024

Prepared by Asplundh NZ



Purpose

Asplundh were engaged by LINZ to assess potentially hazardous trees that were adjacent to the walkway on the Clutha River in Alexandra. The walkway is heavily used by the community especially over the summer months and there were concerns that some of the trees may be at risk of failure and may cause an injury.

Objectives

The survey was carried out in the field over 3 days in December 2024. The results have been collected in an app to best show separate areas surveyed, from Clyde to Alexandra and Bridge Hill.

In the first instance the work has been identified based on the below criteria, with only the sites that show signs of imminent failure highlighted in this initial report.

- Imminent probability of failure and likelihood of falling across the track
- Potential fire risk that is accessible and can be processed using a chipper

The report provides approximate values for time spent carrying out the work on the site with the site split into sections to best manage budgets or number of visits to the region. Asplundh have outlined the general health and condition of the predominantly willow and poplar trees in various areas and it outlined recommended works to be carried out and approximate timelines for this work to be completed.

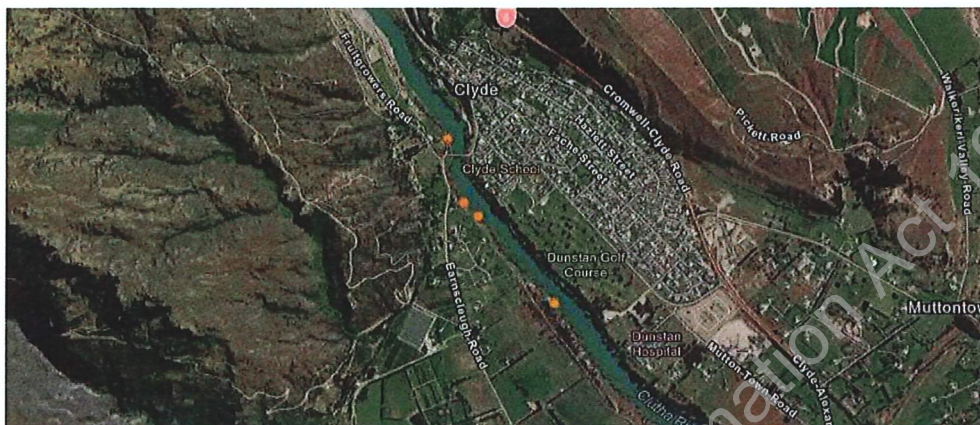
Actions

The methodology used for the management programme required a qualified arborist to inspect the walkway and its surroundings. Fulcrum was used to collect and store all data on site which is geotagged and timestamped for future changes and additions as the programme is worked through.

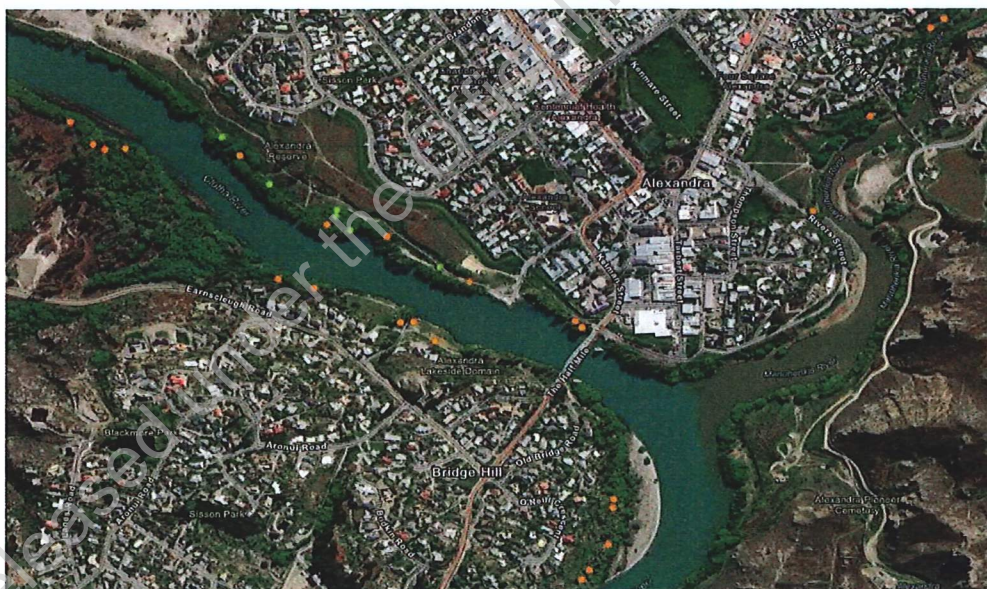
- Asplundh has endeavored to focus on work that is critical to the ongoing management of the site.
- This report is considered an overview of the findings, Asplundh are more than happy to share the contents of the survey recorded in the fulcrum app if requested.

ASPLUNDH®

Zones established are: Clyde with 4 sites of concern



Alexandra / Bridge Hill with 30 sites of concerns on the north and south banks of the river



Status Key

- Open
- Inspected
- Approved
- No work required
- Complete

ASPLUNDH®

Proposed Management Plan:

Findings

Asplundh found 34 trees or groups of trees that pose a potential threat to users of the walkway in Alexandra and Clyde. Asplundh chose to categorize the trees in line with the internationally recognized Tree Risk Assessment (TRAQ) system to rate the likelihood of failure against the likelihood of impacting a target and the consequence of hitting that target. This system provides a pragmatic approach to risk assessment and allows us to categorize the trees that require most urgent attention, managing LINZ's risk profile in the area.

Asplundh have only highlighted trees that are of immediate concern and or pose a fire risk and require attention in the short term.

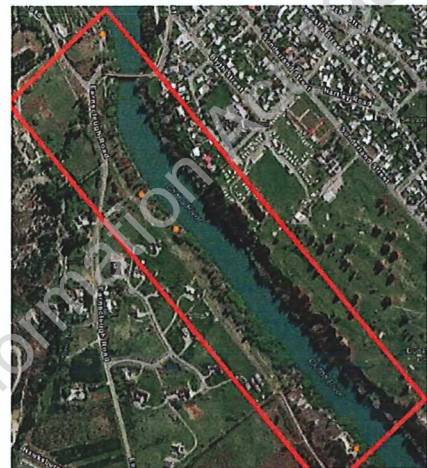
- Whole dead specimen
- Sever cracking in major limb
- Heaving root plate
- Un processed debris on the ground posing a fire risk



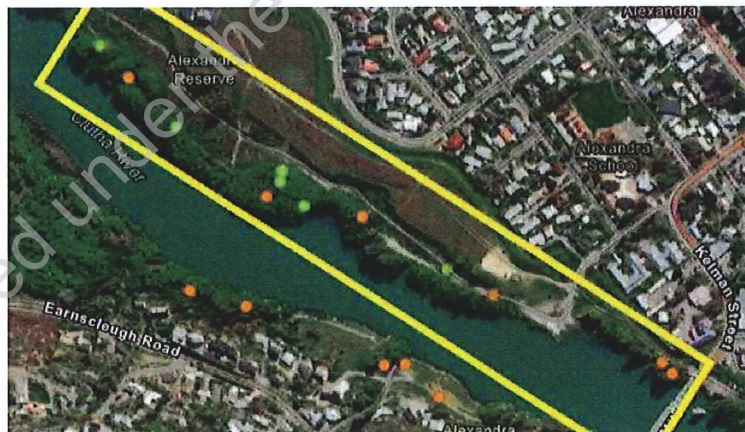
ASPLUNDH®

Pricing for proposed works

Asplundh have separated the work into 5 coloured sections, with red at the Clyde end of the walkway



Below are the highlighted sites in green in the yellow area already approved after discussions with LINZ and scheduled to complete prior to Christmas 2024.



Number of Sites – 6

Estimated cost for works