
MĀORI INTEREST IN SURPLUS CROWN-OWNED LAND

Notice is hereby given that the properties owned by the Crown and its agencies described in the Schedule below have been declared surplus by the Crown.

This schedule is published in order to operate the Protection Mechanism and the Sites of Significance process established by the Government to protect specific Māori interests in surplus Crown-owned land. Iwi/hapu representatives are invited to inform The Office of Treaty Settlements and Takutai Moana: Te Tari Whakataou of specific interests they have in these properties, in accordance with the criteria set out on the forms for Landbanking and the Protection of Sites of Significance. Local Iwi representatives known to The Office of Treaty Settlements and Takutai Moana: Te Tari Whakataou are being notified directly.

Submissions must be accompanied by the correct forms which can be obtained from the Settlement Advisor- Protection Mechanism at The Office of Treaty Settlements and Takutai Moana: Te Tari Whakataou or at www.linz.govt.nz (search: protection mechanism or landbank). Forms for the Protection of Sites of Significance can also be obtained from the local office of Te Puni Kōkiri. Applications for both processes must be lodged with the Settlement Advisor- Protection Mechanism at The Office of Treaty Settlements and Takutai Moana: Te Tari Whakataou by

4.00 pm on Friday, 11 July 2025.

Properties for which no submission has been received by this date may be disposed of.

Contact

Denis McCord Ph (04) 494 9835 or protectionmechanism@tearawhiti.govt.nz

The Office of Treaty Settlements and Takutai Moana: Te Tari Whakataou,
Justice Centre, 19 Aitken Street, Wellington 6011 (SX10111 Wellington).

Reception: ph (04) 494 900, Website: www.whakataou.govt.nz

SCHEDULE

NORTH AUCKLAND LAND DISTRICT

- HN*101682 845 m² - Lot 9 DP 44830 held in Record of Title NA90D/569.
Vacant section.
22 Tokiri Road, Titoki (31 km west of Whangarei)
- HN*101683 1095 m² - Lot 5 DP 52018 subject to right of way easements held in Gazette Notice 453703.1.
Section with dwelling; narrow part adjoins the Marsden Bay Marginal Strip along the foreshore of the harbour.
52 One Tree Point Road, One Tree Point, Whangarei.

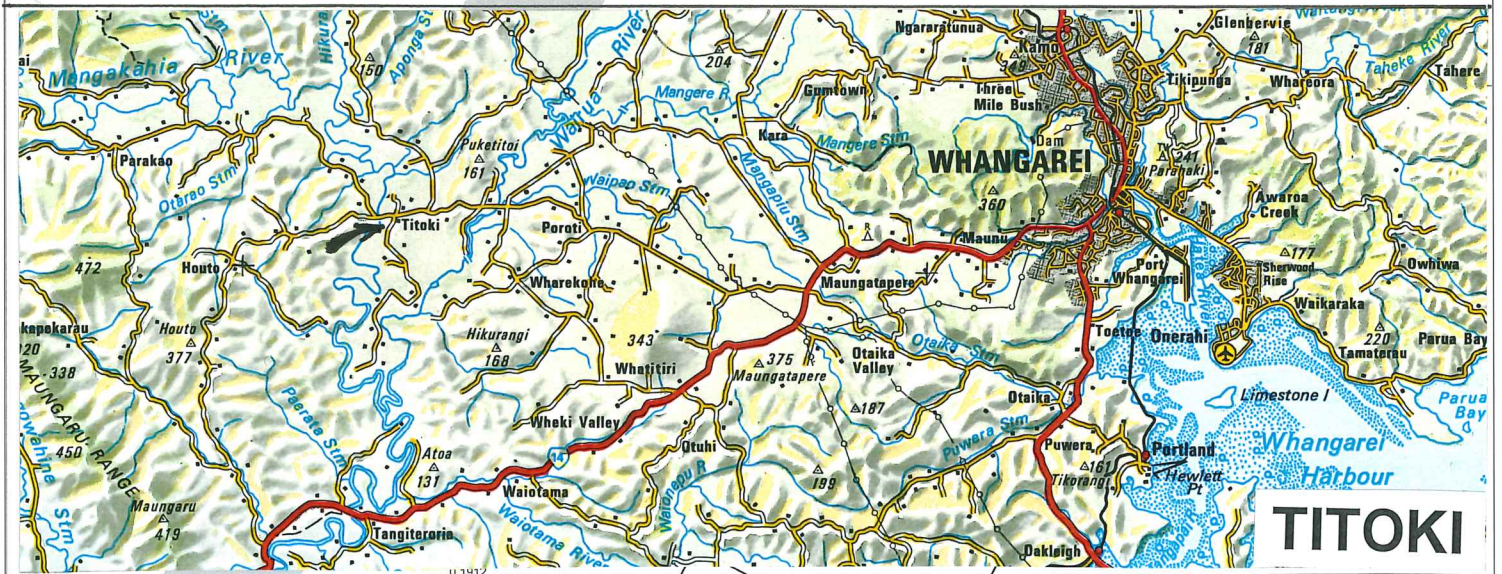
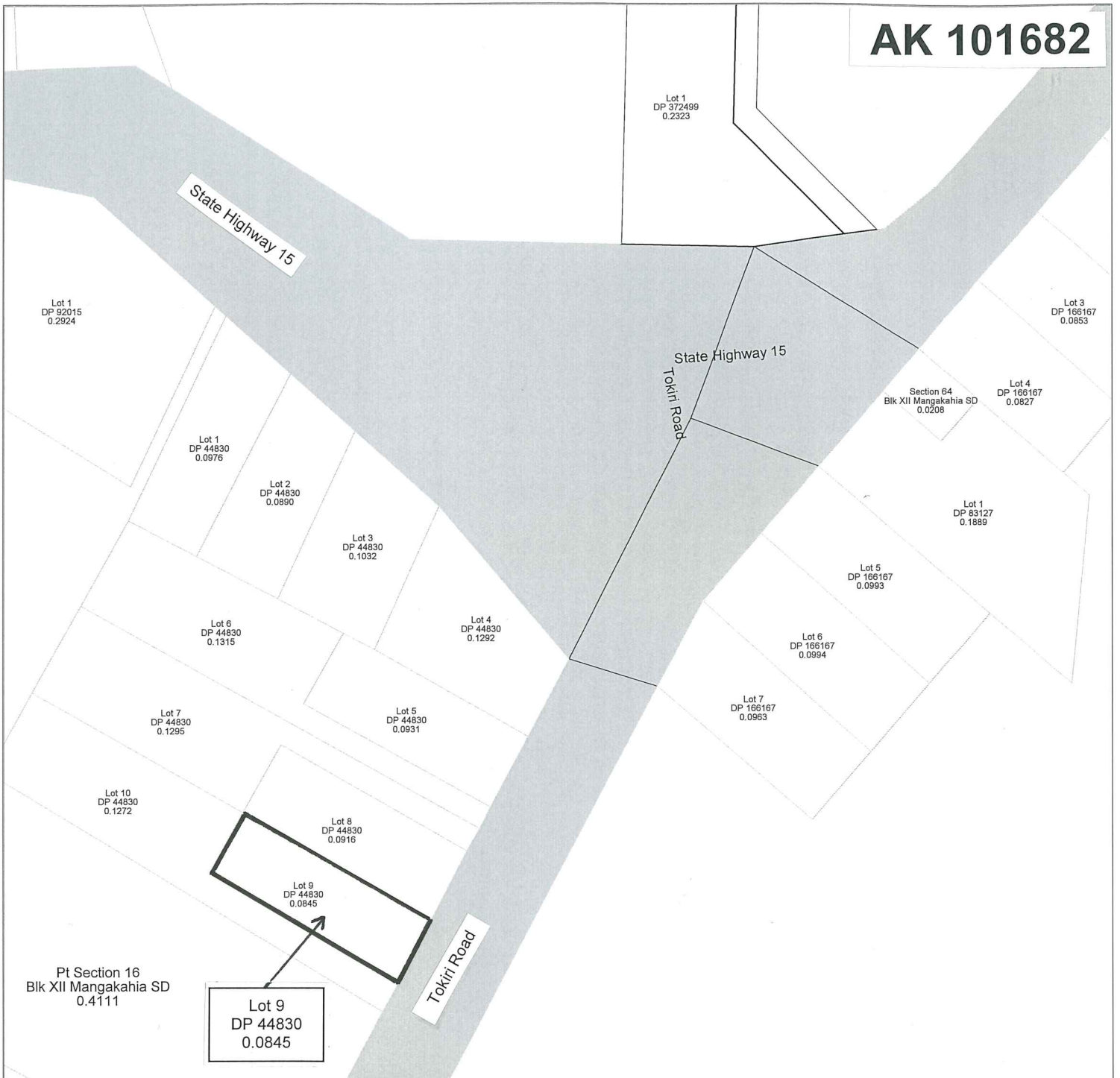
SOUTH AUCKLAND LAND DISTRICT

- HN*101684 1012 m² – Section 1 SO 567660 held in GN 12970603.1.
Section with dwelling - will require some maintenance.
117 Broadway (State Highway 24), Matamata.
- HN*101685 733 m² - Lot 38 DPS 1238 held in Record of Title 1159003.
Section with dwelling.
11 Price Terrace, Matamata.

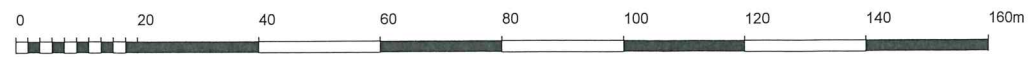
For more information visit www.linz.govt.nz

OTSTM Surplus Schedule B247

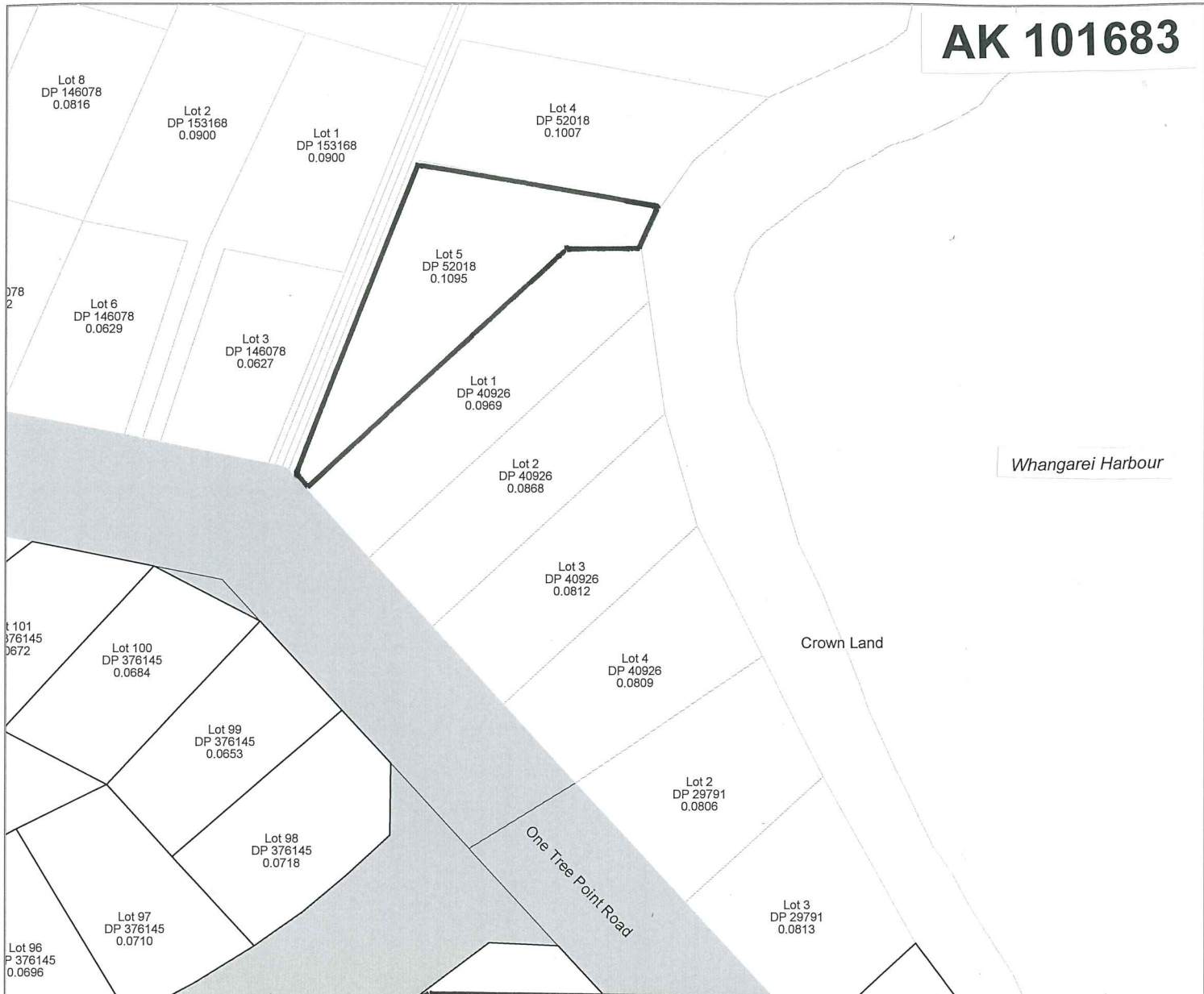
AK 101682



QuickMap
Custom Software Ltd



AK 101683

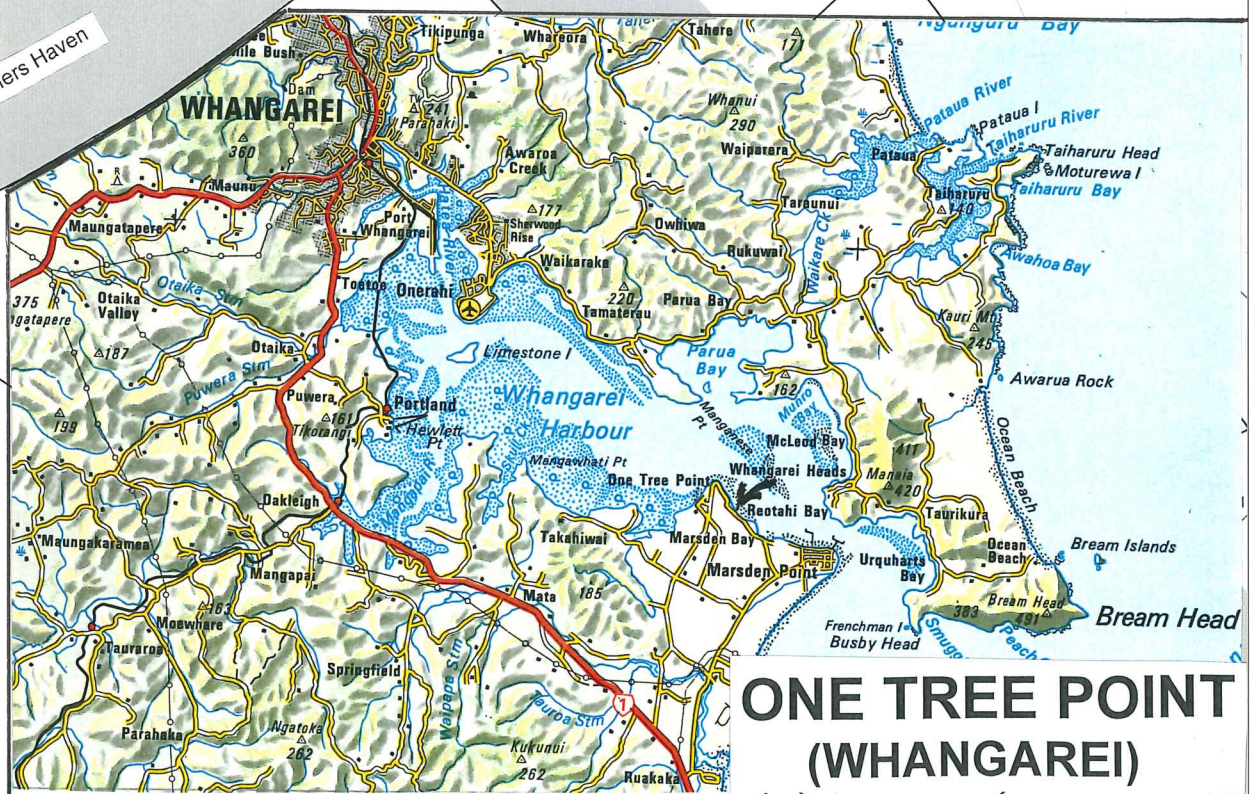


Whangarei Harbour

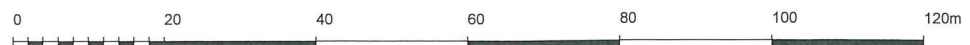
Crown Land

One Tree Point Road

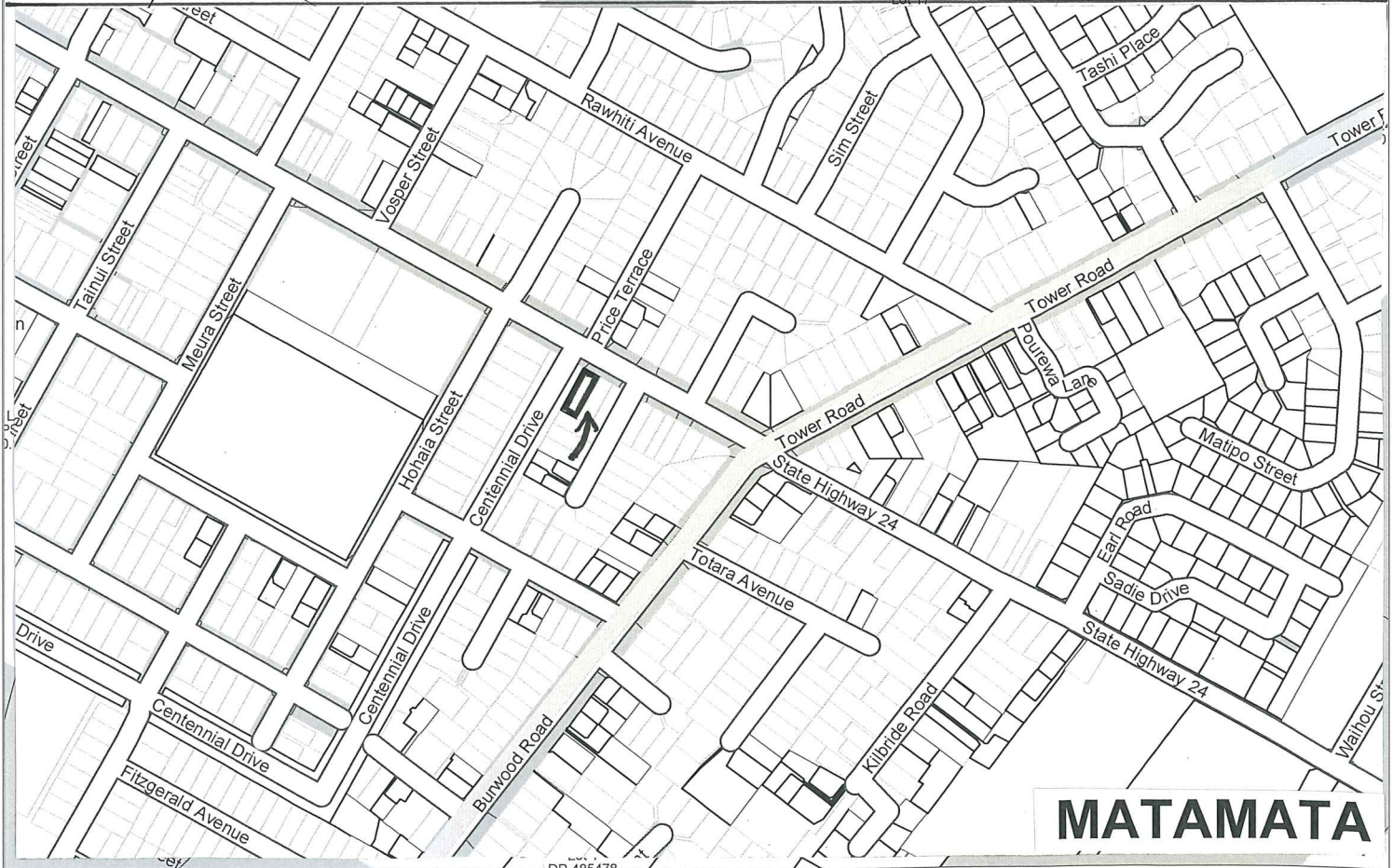
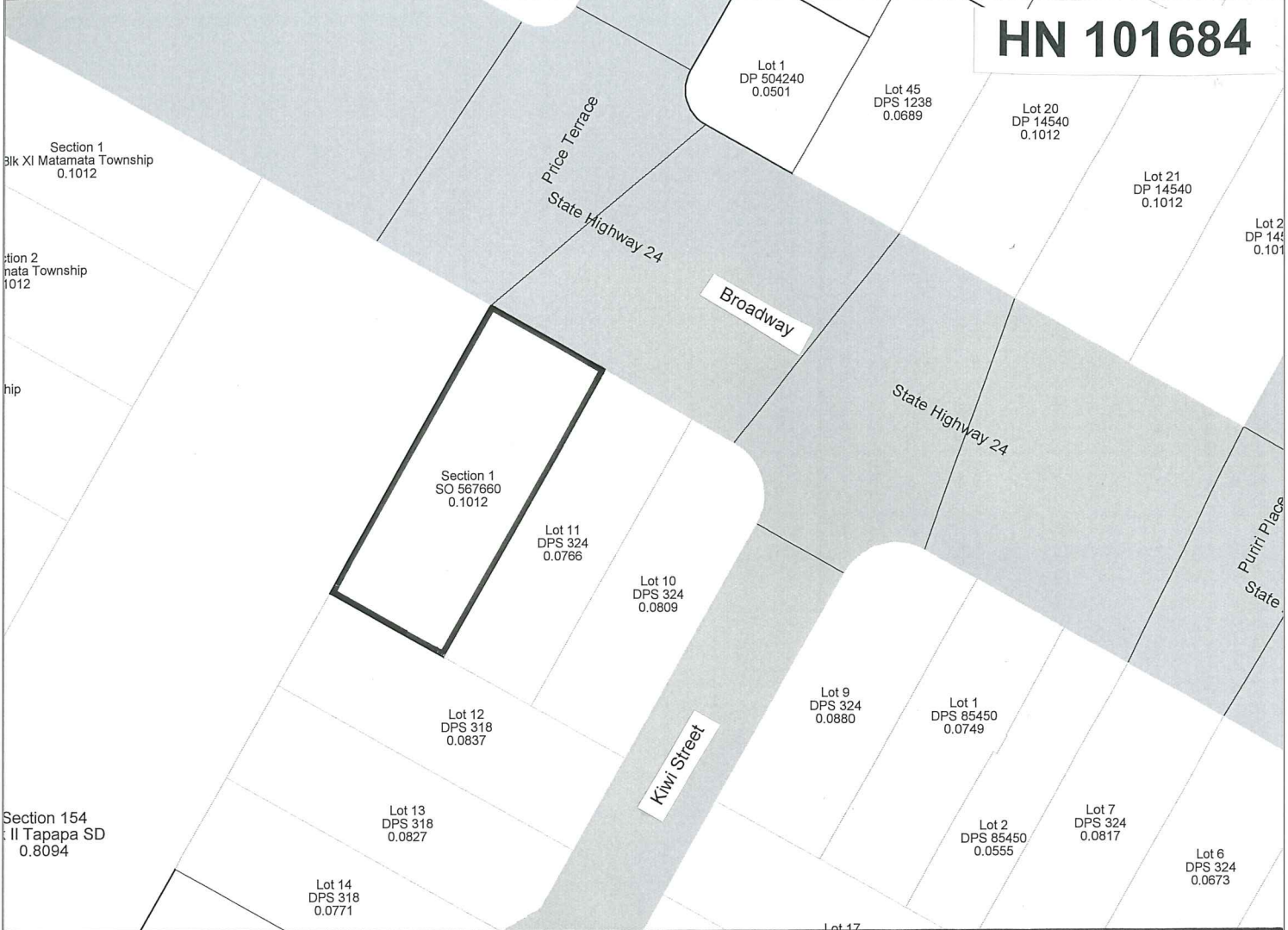
Mariners Haven



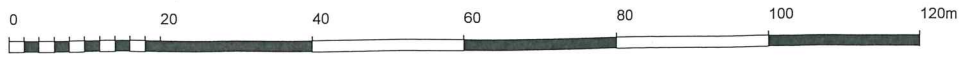
ONE TREE POINT (WHANGAREI)



HN 101684

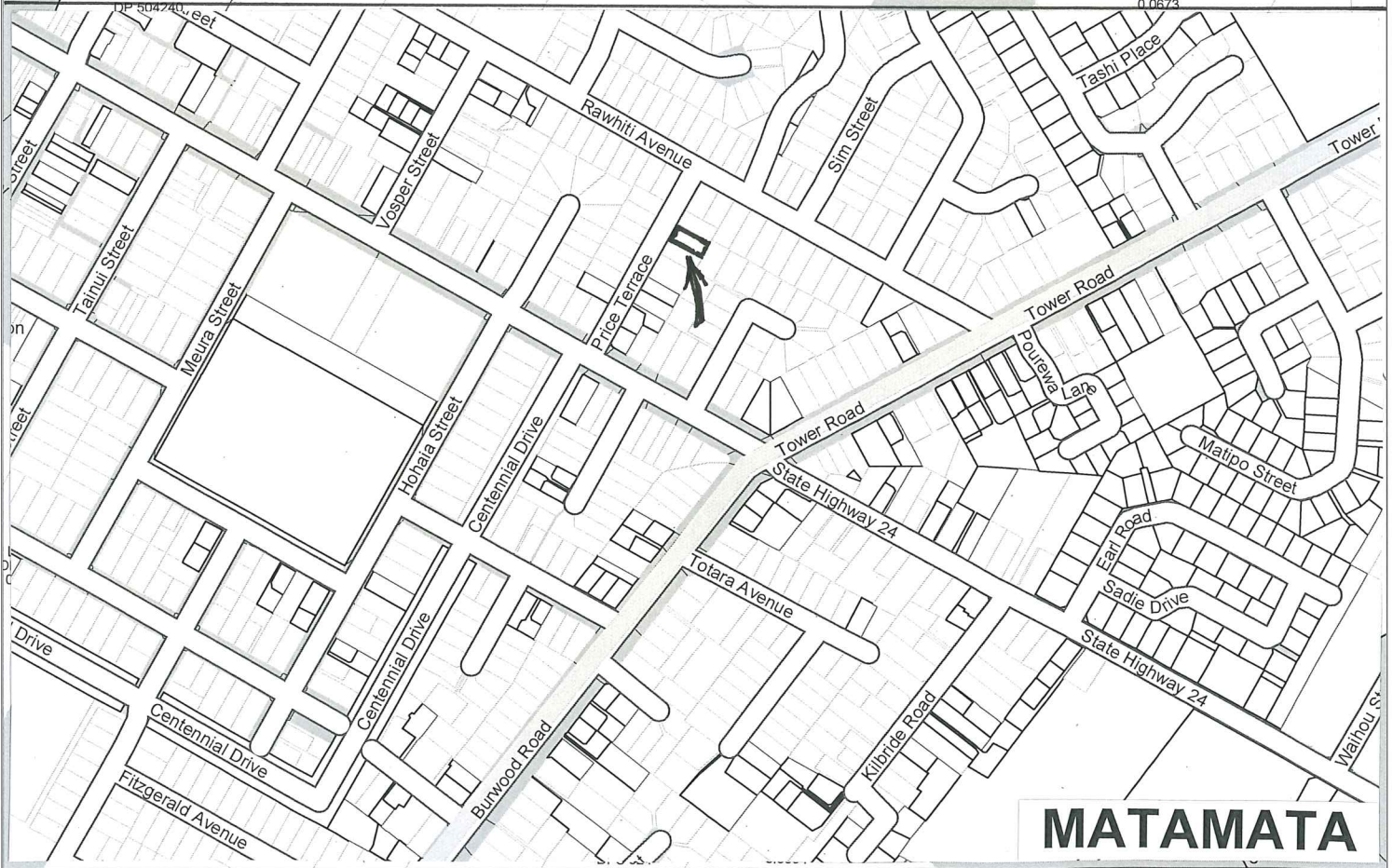
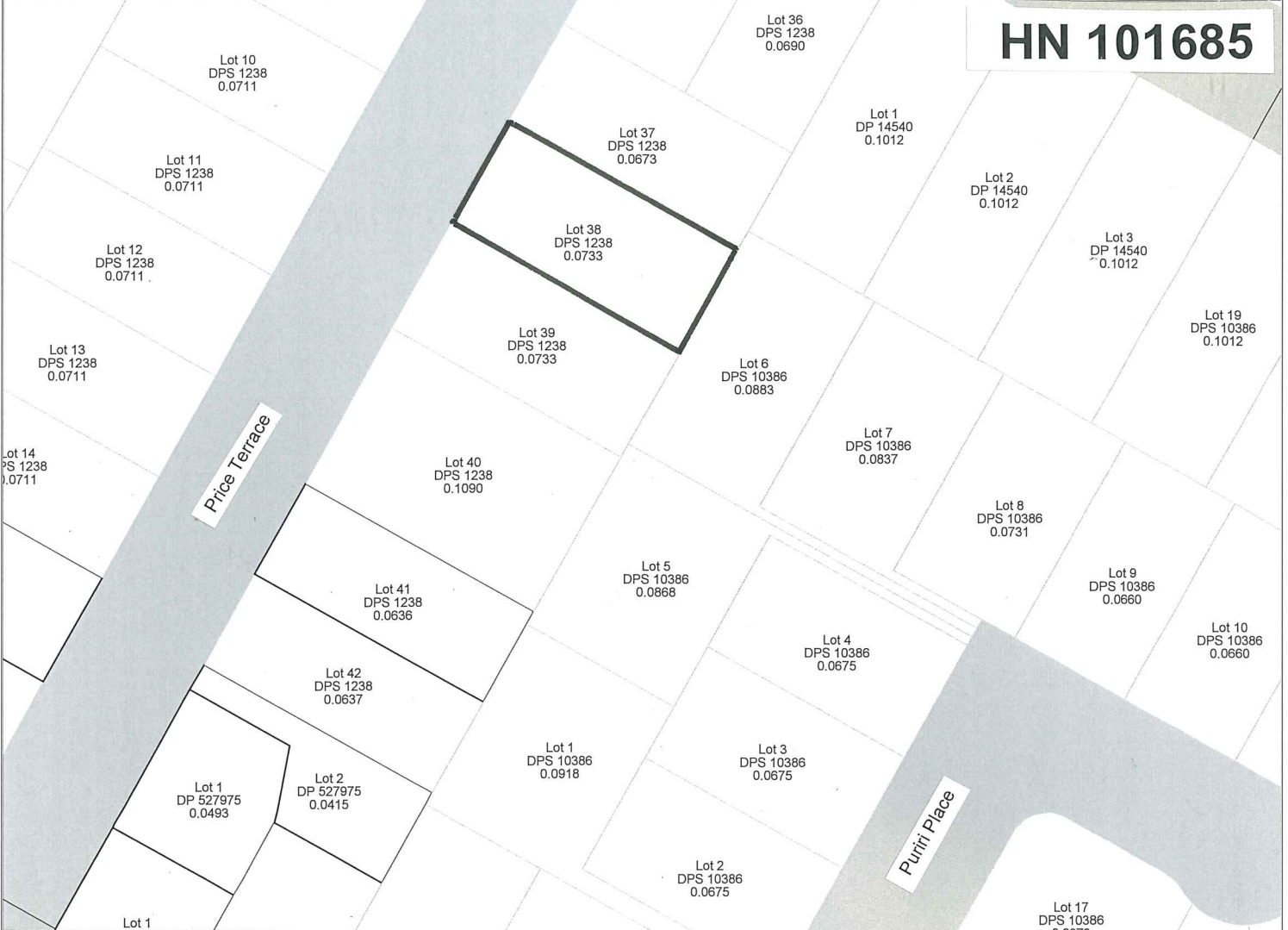


MATAMATA



QuickMap
Custom Software Ltd

HN 101685



MATAMATA

