

Former *Annual New Zealand Notice to Mariners, No. 1*, published 1 July 2025 is cancelled. Additions and amendments to the former notice are indicated by sidelines.

Authority: Toitū Te Whenua Land Information New Zealand

### General Information

1. In accordance with agreements between New Zealand, Australia (AUS) and the British Admiralty (BA) for reducing duplication in charting activities, New Zealand has a defined Charting Area (NZ AREA) the extent of which is shown at the end of this Notice.
2. New Zealand Notices to Mariners (NTMs), are published by Toitū Te Whenua Land Information New Zealand (Toitū Te Whenua LINZ), the New Zealand Hydrographic Authority. There are two main types of NTMs: Annual Notices and fortnightly Notices;
  - (a) Annual NTMs (ANTMs) are numbered 1–19 and are published in July as part of the New Zealand Nautical Almanac (NZ 204). They provide important safety critical information for mariners and are updated by fortnightly NTMs.
  - (b) Fortnightly NTMs are numbered sequentially following on from the highest numbered ANTM annually and are the authority for correcting New Zealand nautical charts and publications. For more details on the content of this service see the NTM section on the Toitū Te Whenua LINZ website [www.linz.govt.nz/products-services/maritime-safety](http://www.linz.govt.nz/products-services/maritime-safety).
3. Fortnightly NTMs can be obtained electronically from Toitū Te Whenua LINZ;
  - (a) Via [www.linz.govt.nz/products-services/maritime-safety/notices-mariners](http://www.linz.govt.nz/products-services/maritime-safety/notices-mariners) where current and previous notices can be viewed and downloaded in PDF format; or
  - (b) By subscribing to the NTMs email distribution service via [www.charts.linz.govt.nz/notices-mariners/subscribe](http://www.charts.linz.govt.nz/notices-mariners/subscribe)
4. Mariners are requested to notify Toitū Te Whenua LINZ immediately when new or suspected dangers to navigation are discovered or of any shortcomings in charts and publications:

Toitū Te Whenua Land Information New Zealand  
New Zealand Hydrographic Authority  
Level 7, 155 The Terrace  
PO Box 5501  
Wellington 6145  
New Zealand

Free phone (NZ): 0800 665 463  
Phone: +64 4 460 0110  
Email: [ntm@linz.govt.nz](mailto:ntm@linz.govt.nz)

A reporting form (Hydrographic Note) can be found at the back of the New Zealand Nautical Almanac (NZ 204) and each fortnightly NTM edition. This form is also available online at [www.linz.govt.nz/products-services/maritime-safety/safety-sea/report-hazard-navigation-hydrographic-note](http://www.linz.govt.nz/products-services/maritime-safety/safety-sea/report-hazard-navigation-hydrographic-note) for download or it can be completed and submitted via the website.

5. Changes to or defects in aids to navigation should be reported via the nearest coast radio station to:

24-hour Emergency Phone (NZ): 0508 472 269  
Phone (INT): +64 4 577 8030  
Fax: +64 4 577 8038  
Email: [rccnz@maritimenz.govt.nz](mailto:rccnz@maritimenz.govt.nz)  
Inmarsat-C (POR): 451 200 067

### International Chart Series

6. The New Zealand Hydrographic Authority publishes International Charts within the NZ Area which provides the mariner with worldwide coverage to a uniform specification. As part of this series New Zealand has 25 charts covering its adjacent oceans and seas.

This chart series is available for reprinting by Member States of the International Hydrographic Organization (IHO), with a minimum of modification. Each chart has an international number with the prefix INT, but may also bear a national number allocated by the producer or printer nation to facilitate identification in the national series.

International charts are maintained by NTMs and IHO Member States have undertaken to repeat notices affecting their international charts. Mariners can therefore correct charts from the NTMs of the producer or printer nation concerned.

#### 7. Selected Nautical Publications

Publisher	Title	Obtainable from
<b>Toitū Te Whenua Land Information New Zealand (Toitū Te Whenua LINZ)</b> <a href="http://www.linz.govt.nz">www.linz.govt.nz</a>	Charts of New Zealand and adjacent waters	Chart retailers
	<i>New Zealand Tidal Stream Atlas (NZ 206)</i>	Chart retailers
	<i>New Zealand Chart Catalogue</i>	Toitū Te Whenua LINZ website
	<i>New Zealand Nautical Almanac (NZ 204) (including Annual New Zealand Notices to Mariners)</i>	Chart retailers Book retailers Toitū Te Whenua LINZ website
	<i>New Zealand Notices to Mariners, fortnightly edition (for correcting charts and publications)</i>	Toitū Te Whenua LINZ website Maritime New Zealand Maritime Safety Inspectors Chart retailers
<b>UK Hydrographic Office</b> <a href="http://www.admiralty.co.uk">www.admiralty.co.uk</a>	<i>ADMIRALTY Sailing Directions, New Zealand Pilot (NP51), Edition 21, 2026</i>	Admiralty Chart agent UKHO website
	<i>The Mariner's Handbook (NP100), Edition 13, 2023</i>	
	<i>How to Keep Your ADMIRALTY Charts Up-To-Date (NP294), Edition 11, 2022</i>	
	<i>Symbols And Abbreviations Used on ADMIRALTY Charts. Chart NP5011 (INT 1), Edition 8, 2021</i>	
	<i>Guide to ENC Symbols used in ECDIS (NP5012), Edition 2, 2015</i>	
<b>Maritime New Zealand (MNZ)</b> <a href="http://www.maritimenz.govt.nz">www.maritimenz.govt.nz</a>	<i>New Zealand's System of Buoys and Beacons – Revision 2008</i>	Maritime New Zealand MNZ website
	<i>Distress Beacons Save Lives – Revision 2013</i>	
	<i>Radio Handbook – Your Guide to Marine Communication – 2025</i>	
<b>Coastguard Tautiaki Moana</b> <a href="http://www.coastguard.nz">www.coastguard.nz</a>	<i>Safety in Small Craft, Revised Edition 2021</i>	Boat Books Some chart retailers and chandleries
	<i>Rules of the Road at Sea, 10th Edition, 2018</i>	

### Charts and Publications

8. Should you have difficulty in obtaining any charts or publications contact:

Toitū Te Whenua Land Information New Zealand  
 New Zealand Hydrographic Authority  
 Level 7, 155 The Terrace  
 PO Box 5501  
 Wellington 6145  
 New Zealand  
 Free phone (NZ): 0800 665 463  
 Phone: +64 4 460 0110  
 Email: [hydro@linz.govt.nz](mailto:hydro@linz.govt.nz)

Maritime New Zealand  
 PO Box 25620  
 Wellington 6146  
 New Zealand  
 Free phone (NZ): 0508 22 55 22  
 Phone: +64 4 473 0111  
 Fax: +64 4 494 1263  
 Email: [enquiries@maritimenz.govt.nz](mailto:enquiries@maritimenz.govt.nz)

### Legal Status – Use of Charts and Publications

9. For compliance with New Zealand legal requirements for nautical charts and publications please refer to *Maritime Rules Part 25*, available from [www.maritimenz.govt.nz/rules/all-rules/](http://www.maritimenz.govt.nz/rules/all-rules/)

10. When used in an IMO compliant ECDIS, New Zealand ENC's will allow vessels navigating in New Zealand to meet the strict chart carriage requirements of the *International Convention for Safety of Life at Sea, 1974*, (SOLAS), Chapter V (IMO) and *Maritime Rules Part 25: Nautical Charts and Publications* (MNZ).

### Official Paper Charts

11. Toitū Te Whenua LINZ produces official nautical charts to aid safe navigation in New Zealand waters and certain areas of Antarctica and the South West Pacific. Using charts safely involves keeping them up-to-date using NTMs.
12. Official nautical charts are available for purchase from approved chart retailers. Contact details for all chart retailers are available from [www.linz.govt.nz/products-services/charts/where-find-charts](http://www.linz.govt.nz/products-services/charts/where-find-charts).

A full list of all Permanent, Temporary and Preliminary notices affecting any given chart can be found using the *New Zealand Chart Catalogue* online database, see paragraph 13 below.

### New Zealand Chart Catalogue

13. The online *New Zealand Chart Catalogue* allows mariners to search for all New Zealand ENC's or paper charts by region or chart name/number. The *Chart Catalogue* spatial view is located at [www.charts.linz.govt.nz/charts/spatial-viewer](http://www.charts.linz.govt.nz/charts/spatial-viewer). The *Chart Catalogue* list views are located at [www.charts.linz.govt.nz/charts](http://www.charts.linz.govt.nz/charts).

### Official Electronic Navigational Charts (ENCs)

Mariners are strongly advised to read the latest version of the IHO publication S-66 – *Facts about Electronic Charts and Carriage Requirements*, which can be downloaded from [www.iho.int](http://www.iho.int).

14. ENC's are specifically designed for use in ECDIS onboard ships. As the New Zealand Hydrographic Authority, Toitū Te Whenua LINZ is responsible for creating and maintaining the official set of ENC's for the New Zealand area of charting responsibility (NZ Area). The NZ Area includes the South West Pacific, New Zealand home waters and the Ross Sea region in Antarctica – see the Area of New Zealand Charting and Coverage of Notices to Mariners map at the end of this notice.
15. The ENC readme.txt file located within the ENC exchange set contains **Important Safety Related Information**. This file should be consulted to ensure that all related issues are taken into consideration.

16. NZ ENC Service within the NZ Area are available free-of-charge to mariners by subscribing to the Toitū Te Whenua LINZ NZ ENC Service [www.encservice.linz.govt.nz/](http://www.encservice.linz.govt.nz/).
- NZ ENCs are also available from chart retailers through the International Centre for ENCs (IC-ENC) [www.ic-enc.org](http://www.ic-enc.org) and PRIMAR global distribution network [www.primar.org](http://www.primar.org). For more information see [www.linz.govt.nz/products-services/charts](http://www.linz.govt.nz/products-services/charts).
- The release of all new Toitū Te Whenua LINZ ENCs is promulgated through the fortnightly editions of *New Zealand Notices to Mariners* (NTMs). ENC updates are issued for NTMs where appropriate.
17. New Zealand ENCs are official electronic charts produced in accordance with the *IHO Transfer Standard for Digital Hydrographic Data, S-57*, Edition 3.1 and protected using the international data security scheme as defined in the *IHO Data Protection Scheme, S-63*, Edition 1.2.0. They are authorised for use in International Maritime Organization (IMO) compliant ECDIS and can also be used in compatible ECS.
18. Toitū Te Whenua LINZ ENCs currently available are listed at [www.linz.govt.nz/products-services/charts/nz-chart-catalogue](http://www.linz.govt.nz/products-services/charts/nz-chart-catalogue) and the IHO website: [www.iho.int](http://www.iho.int).

#### Chart Images – TIFF Images of Paper Charts

19. Toitū Te Whenua LINZ provides electronic images of New Zealand's official paper charts in high resolution TIFF format.

Note: Toitū Te Whenua LINZ raster chart images available from [www.linz.govt.nz](http://www.linz.govt.nz) are not geo-referenced, not to be used for navigation and are not corrected for NTMs.

20. Toitū Te Whenua LINZ's raster chart images are available at no cost for users to download via the online *Chart Catalogue*, see paragraph 11 above.

Note: Data viewed or downloaded from the website is not equivalent to or a replacement for the Official Charts, Notices to Mariners, Tide Table, Light List and Nautical Almanac as specified in MNZ's *Maritime Rules Part 25: Nautical Charts and Publications* (pursuant to Section 36 of the *Maritime Transport Act 1994*).

#### Reliance on Charts and Associated Publications

21. While every effort is made to ensure the accuracy of the information on New Zealand charts and other publications, it should be appreciated that it may not always be complete and up to date. The mariner must be the final judge of the reliance to be placed on the information given, bearing in mind their particular circumstances, the need of safe and prudent navigation, local pilotage guidance and the judicious use of available navigational aids.

#### The Use of Charts and Associated Publications

22. Charts should be used with prudence: there are areas where the source data are old, incomplete or of poor quality. Mariners should use the largest scale appropriate for their particular purpose; apart from being the most detailed, the larger scales are usually corrected first. When extensive new information (such as a new hydrographic survey) is received, some months may elapse before it can be fully incorporated in published charts. On small scale charts of ocean areas where hydrographic information is, in many cases, still sparse, charted shoals may be in error as regards position, least depth and extent. Undiscovered dangers may exist, particularly away from well-established routes.

#### Further Guidance

23. The Admiralty publication, *The Mariner's Handbook* (NP100) gives a fuller explanation of the limitations of charts. All users should study it in their own interest.

New Zealand's Area of Charting Responsibility

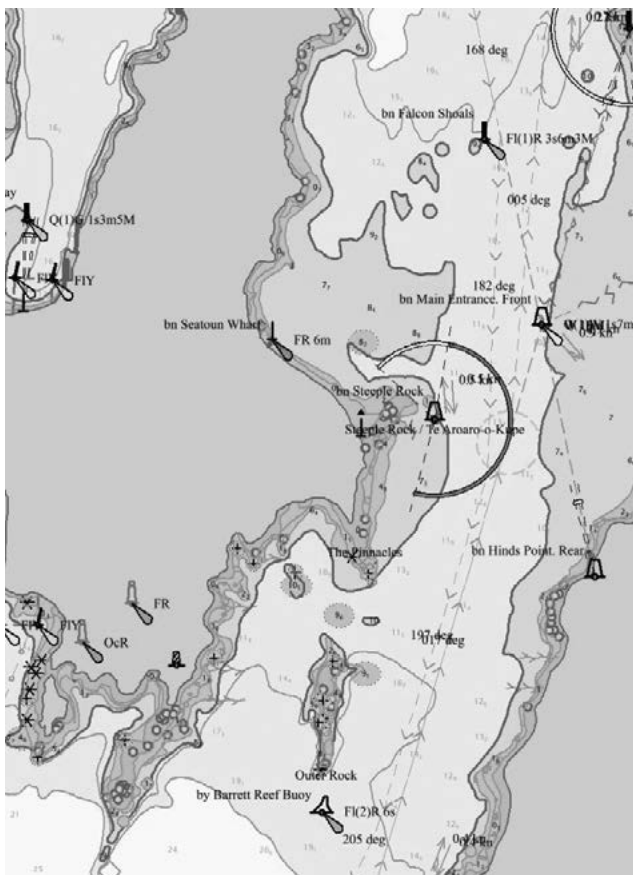


# NZ ENC Service

## Official NZ Electronic Navigational Charts

### Why do I need NZ ENCs?

NZ ENCs are official electronic navigational charts published and authorised by the New Zealand Hydrographic Authority. They contain up-to-date information necessary for safe navigation in NZ waters, South West Pacific and Ross Dependency, Antarctica.



### Benefits of using NZ ENCs:

- Updated weekly with the latest information
- Contain more information than a paper chart
- Meet Safety of Life at Sea (SOLAS) requirements

### NZ ENCs allow your navigation system to:

- Select displays to show only what you need
- Trigger alarms and warnings based on your vessel's draft and preferred look-ahead requirements
- Query object for more information

### Who can use NZ ENCs?

- ✓ SOLAS vessels
- ✓ State registered commercial vessels
- ✓ Recreational boaties

### Free of charge for mariners

[www.encservice.linz.govt.nz](http://www.encservice.linz.govt.nz)

