

# Te Komiti Ingoa mō ngā Tārainga Takere Moana | Undersea Feature Names Committee (UFNC) recommendations (6)

Summary of  
UFNC hui

At its 11 February 2026 hui, the UFNC considered undersea name proposals within New Zealand's 12 nautical mile territorial limit. Six recommendations were made to the Board to assign and alter undersea names therefore require public notification. Reports from the UFNC to the Board's 30 April 2026 hui follow the Board's recommendations below. They do not show the Secretariat's recommendations to the Board and are edited to be specific to each proposal.

## Board's decision to accept the proposals and seek public submissions

At its 30 April 2026 hui the Board made these decisions on the proposals:

The Board agrees to **alter** these existing unofficial recorded undersea feature names within 12 nautical miles for the reasons noted:

- Motuhora Scarp to **Moutohorā Escarpment** [correct spelling and update obsolete generic term],
- Otago Basin to **Kōura Basin** [alter one of two duplicated Otago Basin names to another name],
- Motiti Spit to **Mōtiti Shoal** [standardise orthography and correct generic term],
- Whakaari High to **Whakaari Shelf** [correct generic term],

**and**

**Notify** as proposals to **alter** for one month.

The Board accepted the proposals to **assign** these new or existing published (but not 'recorded') names as official for undersea features within 12 nautical miles:

- **Lloyd Dome** [published name but not an unofficial recorded name],
- **Pāhaua Bank** [Pahaua Bank used in publications but not an unofficial recorded name],

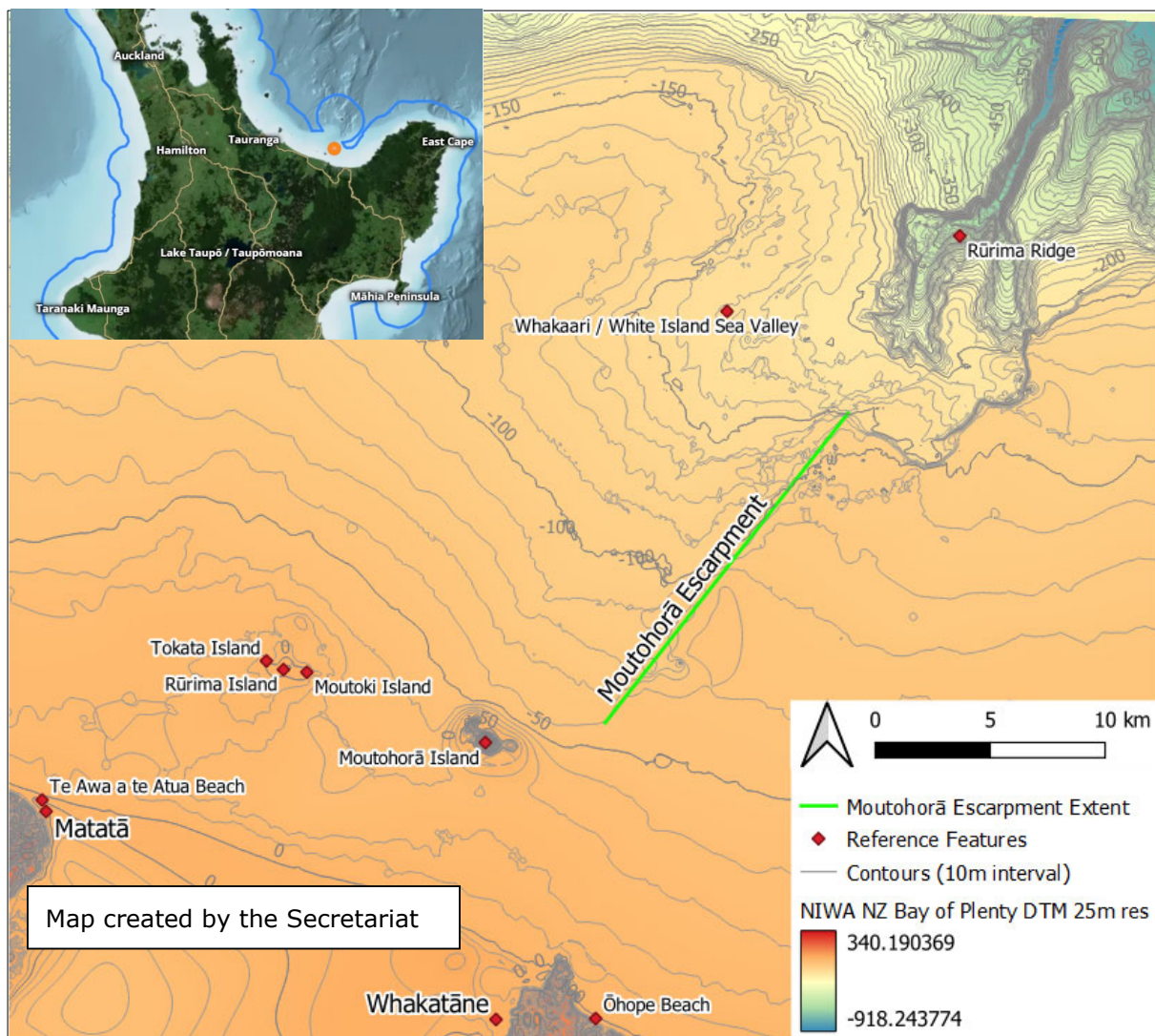
**and**

**Notify** as proposals to **assign** for one month.

# Moutohorā Escarpment

[altered from Motuhora Scarp]

Bay of Plenty



## Summary

The UFNC<sup>1</sup> is requested to recommend the Board accepts a proposal to alter the unofficial recorded name Motuhora Scarp to **Moutohorā Escarpment** as an official name for an escarpment north of Whakatāne, Bay of Plenty. The Secretariat submitted the proposal to standardise the specific name with the associated land feature, Moutohorā Island. The proposal also seeks to update the generic term to 'escarpment', noting that 'scarp' is now an obsolete term. The existing recorded name Motuhora Scarp was added to the *NZ Gazetteer* as an unofficial recorded name from the NIWA<sup>2</sup> spreadsheet provided in 2013. The feature is within New Zealand's 12NM territorial sea and within the Board's naming jurisdiction<sup>3</sup>.

<sup>1</sup> Undersea Feature Names Committee

<sup>2</sup> National Institute of Water and Atmospheric Research; recently merged with GNS Science to form Earth Sciences New Zealand

<sup>3</sup> The continental shelf as defined in s.2(1) of the Continental Shelf Act 1964, and the Ross Dependency as defined in s.7(1) of the Antarctica (Environmental Protection) Act 1994

The UFNC is requested to confirm that the escarpment has the correct description, extent, coordinates, and feature type according to the specifications in the [Cookbook for generic terms of undersea feature names](#).

## Secretariat assessment

The proposal The Secretariat has proposed altering Motuhora Scarp to Moutohorā Escarpment for consistency with the name of the associated land-based feature, Moutohorā Island. The Board assigned Moutohora Island as an official name in 1992, being the correct original Māori name for Whale Island (mou = island, tohorā = whale). In 2024 the name was standardised as Moutohorā Island. The Secretariat has also proposed updating the outdated generic term ‘scarp’ with the approved generic term ‘escarpment’.

Name shown on charts The feature was named on chart NZ 542 for the first time in March 2020. It is also named on a bathymetric map.

Chart	Date	Name
NZ 542	2020 (first appearance)	Motuhora Scarp
NZ 54	2020	Not depicted or named
Coastal Series CBS_Bay of Plenty	1973, 1989	Motuhora Scarp

Location and extent of the feature, geographic feature type and generic term

The undersea feature is a fully submerged escarpment starting approximately 4-5km from Moutohorā Island. It is a surface expression of the Whakaari / White Island fault and forms the eastern boundary of the Whakatāne Graben. It is ~17km long and of low relief with a 40m change in elevation between 100m deep, rising to 60m at its shallowest point. It extends from 37 50 53.28020 latitude, 177 01 54.83039 longitude to 37 43 22.64263 latitude, 177 08 41.62967 longitude.

‘Escarpment’ is an approved generic term in the Board’s [Standard for Undersea Feature Names](#) and the IHO’s [B-6 Guidelines](#). The [Cookbook for generic terms of undersea feature names](#) does not recommend using ‘scarp’ for new undersea feature names, as it’s now an obsolete term.

The *Cookbook* describes:

### **ESCARPMENT**

Definition: An elongated, characteristically linear, steep slope separating horizontal or gently sloping areas of the sea floor.

Dimensions: Usually greater than 10 kilometres in length and can be 100s of kilometres long.

Length to width ratio: Greater than 3:1, but usually greater than 10:1.

Depth: Any water depth.

Steepness: Usually steeper than 10 degrees – 175 m change in elevation over one kilometre.

Comments: Can occur at the edge of other features such as TROUGHS, CANYONS and TERRACES.

Similar Features: May be the riser of a TERRACE.

---

Associated names, history and references to the feature

The name Motuhora Scarp first appears on a 1973 bathymetric map for coastal Bay of Plenty. It was added to the *NZ Gazetteer* as an unofficial recorded undersea name from the NIWA spreadsheet provided in 2013. The feature is named in association with the land feature Moutohorā Island. The Board assigned Moutohora Island as an official name in 1992 (replacing Motuhora Island), to ensure the spelling reflected the correct meaning 'Whale Island'. It was subsequently amended to the standardised orthography, Moutohorā Island, in *NZ Gazette* notice [2024-In5734](#), as a result of the Board's work on the second edition 'Tangata Whenua Place Names' maps. Another associated name in the *NZ Gazetteer* is [Moutohora \(Whale\) Island Wildlife Management Reserve](#). There's also Moutohora (locality) on the Mōtū River, approximately 38km south-southeast of Ōpōtiki, and associated names: Moutohora (hill), Moutohora (trig station), Moutohora Railway Station and Moutohora Post Office, a discontinued name. The locality and hill were apparently named in reference to Moutohorā Island, though Reed and Dowling (2010) query this association, noting that the features are well inland.<sup>4</sup> None of these 'duplications' are likely to cause confusion with Moutohorā Escarpment.

---

Consultation with iwi

The Secretariat has advised Ngāti Awa, Whakatōhea, Ngāi Tahu, and Te Whānau-ā-Apanui of the proposal to alter Motuhora Scarp to Moutohorā Escarpment, asking for their feedback. No responses have been received at the date of writing this report (mid December 2025).

---

Advice on orthography<sup>5</sup>

A Te Taura Whiri i te Reo Māori licensed translator advised that Moutohorā is the correct standardised orthography in relation to Moutohorā Island during the Board's project to release the second edition 'Tangata Whenua Place Names' maps. *New Zealand Gazette* notice [2024-In5734](#) amended the official name to the correct standardised orthography with a tohūtō (macron) on the [a].

---

Relevant section from the [NZGB Act 2008](#)

Because the feature is wholly within 12NM of territorial New Zealand and the proposal is to alter a recorded name, it's processed through sections 16-21 of the Act.

Under section 25 of the Act a proposal would only be made to SCUFN<sup>6</sup> if the feature was more than 50% beyond New Zealand's territorial limits.

---

<sup>4</sup> Reed, A.W. & Peter Dowling, *Place Names of New Zealand*, 2010, page 263. In 1950 these names were altered from the spelling 'Motuhora' – see *NZ Gazette* 16 November 1950, No. 70, page 1989.

<sup>5</sup> The conventions and rules of how to write a language

<sup>6</sup> Sub-committee on Undersea Feature Names

Section 11(1)(e) refers in respect to encouraging the use of original Māori names, noting that this one is translocated.

---

[Standard for undersea feature names NZGBS60000](#)  
criteria

#### 4.1 Specific terms

The Board will apply these principles when considering proposals to assign, approve, alter, adopt or discontinue official and recorded undersea feature names:

(k) Where appropriate, the specific term should be named after the geographically connected and already named land based geographic feature, with consideration given to the original Māori name. For example: Haast Channel is associated with Waiatoto River, so it was officially altered to Waiatoto Channel, Foulwind Canyon is associated with Cape Foulwind, and Koutunui Point is associated with Koutunui Bank. Consistent and correct orthography should be applied to associated names

*Secretariat comment: this proposal will ensure that consistent and correct orthography is applied between the undersea feature and its associated land-based feature.*

#### 4.2. Generic Terms

The Board will apply these principles when considering proposals to assign, approve, alter, adopt or discontinue official and recorded names for undersea features:

(a) Generic terms must be selected from the list of definitions in Appendix A: Approved generic terms to reflect physical descriptions of features.

(b) Existing names that use generic terms not listed in Appendix A may be altered, for example, Volcano to Seamount, Sea Valley to Valley

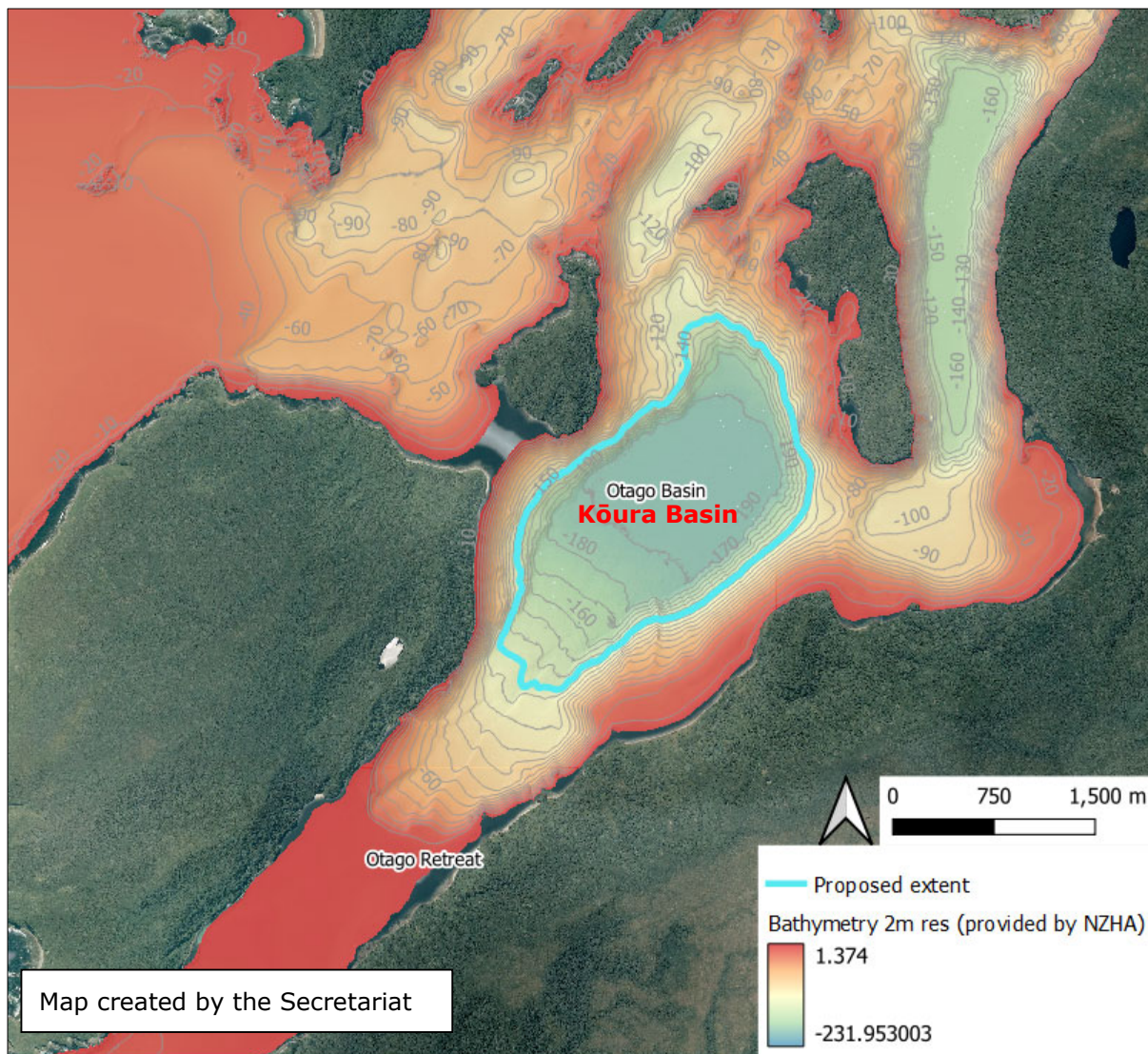
*Secretariat comment: this proposal seeks to replace the obsolete generic term 'scarp' with the approved generic term 'escarpment' as per Appendix A of the Standard*

---

# Kōura Basin

[altered from Otago Basin]

Fiordland



## Summary

The UFNC<sup>7</sup> is requested to recommend the Board accepts a proposal to alter the unofficial recorded name Otago Basin to **Kōura Basin** as an official name for a basin in Rakituma / Preservation Inlet, Fiordland. The Secretariat submitted the proposal to remove the duplication (and potential confusion) with another sea feature name, Otago Basin (unofficial recorded) ~80km north in Te Rā / Dagg Sound.

Both existing recorded Otago Basin names were added to the *NZ Gazetteer* as unofficial recorded names from the NIWA<sup>8</sup> spreadsheet provided in 2013. The Secretariat has proposed this southernmost Otago Basin name be changed because the adjacent channel it was named in association with, Otago Retreat, has an original Māori name, Kōura, recorded in *Kā Huru Manu*. It is not

<sup>7</sup> Undersea Feature Names Committee

<sup>8</sup> National Institute of Water and Atmospheric Research; recently merged with GNS Science to form Earth Sciences New Zealand

proposed to change Otago Retreat, but the UFNC may wish to consider altering it to Kōura Retreat to be consistent with the associated proposal. The feature is within New Zealand’s 12NM territorial sea and within the Board’s naming jurisdiction<sup>9</sup>.

The UFNC is requested to confirm that the basin has the correct description, extent, coordinates, and feature type according to the specifications in the [Cookbook for generic terms of undersea feature names](#).

## Secretariat assessment

The proposal The Secretariat has proposed altering Otago Basin to Kōura Basin to remove duplication between this undersea name and the other Otago Basin, ~80km north in Te Rā / Dagg Sound. The Secretariat has proposed to alter this Otago Basin name because the associated sea feature name, Otago Retreat, has an original Māori name recorded in *Kā Huru Manu* – Kōura.

Names shown on charts The feature isn’t named on hydrographic charts but is named on a bathymetric map.

Chart/Map	Date	Name
NZ 7654	2016	Not named
NZ 76	2016	Not named
Miscellaneous N58 Preservation Inlet (south)	1982	Otago Basin

Location and extent of the feature, geographic feature type and generic term The undersea feature is a fully submerged depression within Otago Retreat (unofficial recorded sea channel feature), the southern arm of Rakituma / Preservation Inlet. It is approximately 2.7km long by 1.4km wide and -190m deep, rising to -130m at its shallowest point. It is centred on -46.107 latitude 166.6787 longitude.

‘Basin’ is an approved generic term in the Board’s [Standard for Undersea Feature Names](#) or the IHO’s [B-6 Guidelines](#).

The [Cookbook for generic terms of undersea feature names](#) describes:

### **BASIN**

**Definition:** A depression more or less equidimensional in plan and of variable extent.

**Dimensions:** Usually greater than 10 kilometres in largest dimension.

**Length to width ratio:** Can be up to 3:1.

**Depth:** Any water depth.

**Steepness:** Usually less than two degrees – 350 m change in elevation over 10 kilometres.

**Comments:** Definition can cover many different features but try to restrict this term to features with length to width ratios of less than 3:1. This term should

<sup>9</sup> The continental shelf as defined in s.2(1) of the Continental Shelf Act 1964, and the Ross Dependency as defined in s.7(1) of the Antarctica (Environmental Protection) Act 1994

not be confused with “sedimentary basin”, a sediment deposition centre that can occur in within several different morphological depressions.

Similar Features: If depth is greater than 4000 m and area is more than 100 x 100 kilometres consider ABYSSAL PLAIN definition. If the length to width ratio is greater than 3:1 consider TROUGH or TRENCH definitions.

---

Associated names, history and references to the feature

The name Otago Basin first appears on a 1982 bathymetric map for Preservation Inlet. It was added to the *NZ Gazetteer* as an unofficial recorded undersea name from the NIWA<sup>10</sup> spreadsheet provided in 2013. The basin is named in association with the sea channel feature, Otago Retreat. Otago Retreat has the original Māori name Kōura in *Kā Huru Manu* which the Secretariat proposes to use on this undersea basin feature, altering it to Kōura Basin. *Kā Huru Manu* states that Kōura is so named for the crayfish which were found in abundance in the southern part of Rakituma / Preservation Inlet. The name Koura (without the macron) is duplicated in [Koura Beach](#) ~20km north of Karamea, northwest Nelson and [Koura Point](#) on the Karikari Peninsula, Northland. It’s also partially duplicated in several other place names through the country, such as Te Koura, a locality ~12km north of Taumarunui.

---

Consultation with iwi

The Secretariat has advised Te Rūnanga o Ngāi Tahu of the proposal to alter Otago Basin to Kōura Basin. No response has been received at the date of writing this report (mid December 2025).

---

Advice on orthography<sup>11</sup>

A Te Taura Whiri i te Reo Māori licensed translator advised that kōura is the correct standardised orthography for the kupu Māori for salt-water crayfish, the southern rock lobster, red rock lobster, and spiny rock lobster.

---

Relevant section from the [NZGB Act 2008](#)

Because the feature is wholly within 12NM of territorial New Zealand and the proposal is to alter a recorded name, it’s processed through sections 16-21 of the Act.

Under section 25 of the Act a proposal would only be made to SCUFN<sup>12</sup> if the feature was more than 50% beyond New Zealand’s territorial limits.

Section 11(1)(e) refers in respect to encouraging the use of original Māori names, noting that this one is translocated.

---

[Standard for undersea feature names NZGBS60000](#) criteria

#### 4.1 Specific terms

The Board will apply these principles when considering proposals to assign, approve, alter, adopt or discontinue official and recorded undersea feature names:

- (c) Names are to be short and simple and not repeated elsewhere.

---

<sup>10</sup> National Institute of Water and Atmospheric Research; recently merged with GNS Science to form Earth Sciences New Zealand

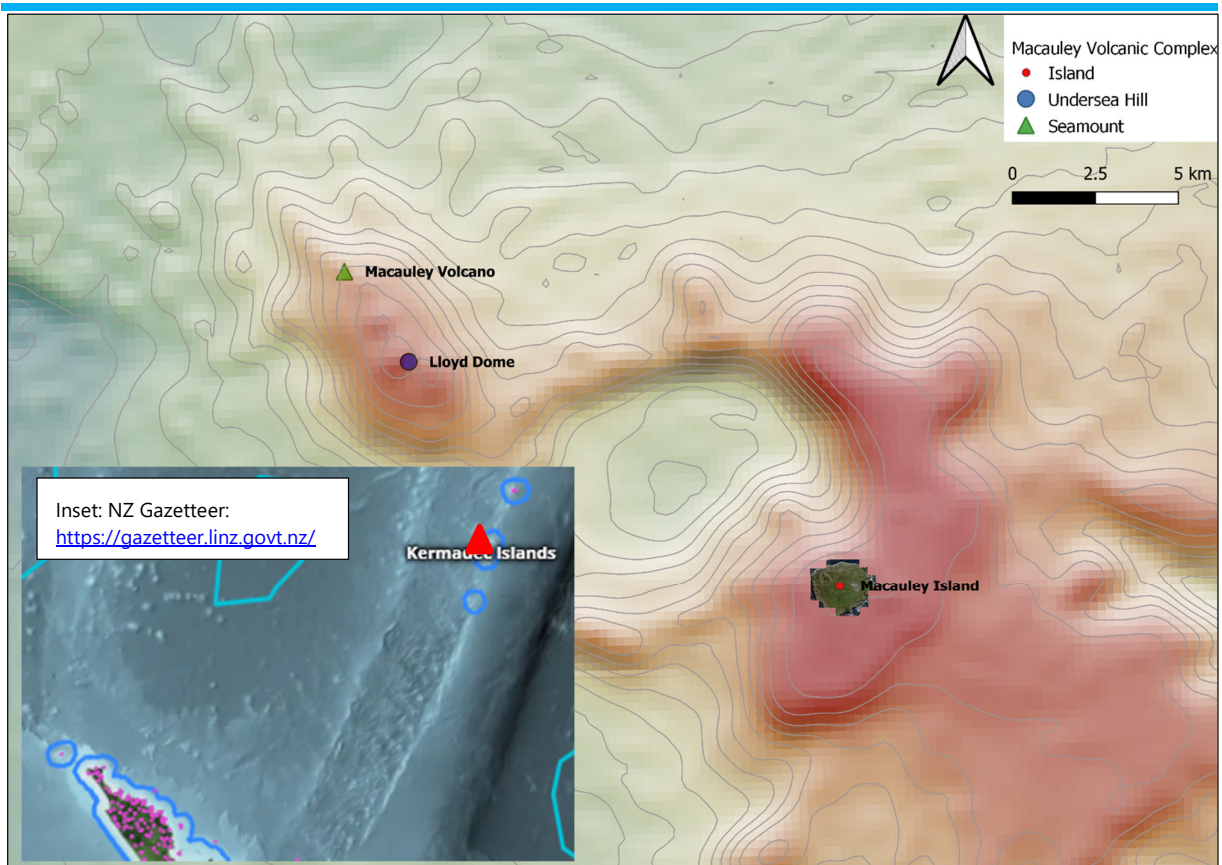
<sup>11</sup> The conventions and rules of how to write a language

<sup>12</sup> Sub-committee on Undersea Feature Names

*Secretariat comment: the primary motivation for this proposal is to remove duplication because this name is shared by two distinct undersea features.*

(k) (abridged) Where appropriate, the specific term should be named after the geographically connected and already named land based geographic feature, *with consideration given to the original Māori name* (emphasis added). For example: Haast Channel is associated with Waiatoto River, so it was officially altered to Waiatoto Channel.

---



### Action requested of the UFNC<sup>13</sup>

- confirm that the undersea feature (incorrectly in the *NZ Gazetteer* as unofficial recorded) Lloyd Dome exists,
- comment on any incorrect coordinates, feature type and/or extent, and
- agree on proposal to the Board to assign (applying the correct generic term), and/or recommend the name be removed (not discontinued) from the *NZ Gazetteer* as appropriate, and the spelling be corrected as applicable.

### Summary

The proposal is included in the 2009 NIWA<sup>14</sup> spreadsheet of undersea feature names and was selected by the Secretariat for this UFNC hui, having been deferred since 2016. Noting that in the future the Secretariat aims to complete processing the small number of remaining names from the NIWA list.

Lloyd Dome is approximately 15km northwest of Macauley Island. Macauley Island is the tiny above-water part of the wider Macauley Volcano. They are both within 12NM of territorial New Zealand.

The Board therefore can't approve this undersea feature name as official under Section 24 of the NZGB Act 2008. But even if it could, the name requires updates to its generic term.<sup>15</sup> 'Dome' is not an approved generic terms as per the *Standard for Undersea Feature Names*. The name would need to be assigned as

<sup>13</sup> Undersea Feature Names Committee

<sup>14</sup> National Institute of Water and Atmospheric Research; recently merged with GNS Science to form Earth Sciences New Zealand

<sup>15</sup> Furthermore, the Board would need to determine that the scientific publications that cite these names are authoritative in terms of Section 4 of the NZGB Act 2008, since they aren't shown on charts or maps.

'new' through s.16-21 of the NZGB Act 2008, meaning public notification inviting submissions.

Because the feature is within New Zealand's 12NM territorial limit, SCUFN<sup>16</sup> will not be advised.

## Secretariat assessment and advice

Relevant sections from the [NZGB Act 2008](#)

Section 4: **recorded name** means the name of a geographic feature that—

- (a) is not an official geographic name; but
- (b) appears in at least 2 publications or databases that are—
  - (i) publicly available; and
  - (ii) in the opinion of the Board, authoritative publications or databases

Lloyd Dome is not named on any publications or databases that the Board has agreed as authoritative. While all names from the 2009 NIWA spreadsheet were added to the *NZ Gazetteer* as recorded names, many are only 'published names' – names used in scientific publications. Names published in scientific publication can be adopted under section 26, but this is only applicable to features beyond 12NM.

Because the feature is wholly within 12NM of territorial New Zealand the UFNC would need to recommend to the Board to make a proposal to assign a 'new' name, noting its existing scientific use, meaning it will be processed through sections 16-21 of the Act.

Under section 25 of the Act a proposal would only be made to SCUFN if the feature was more than 50% beyond New Zealand's territorial limits.

There is no provision in the NZGB Act 2008 to discontinue 'published' names within 12NM. When recorded names are found to not meet the legal threshold, the names can be removed from the *NZ Gazetteer* or at least hidden from public view.

Relevant sections from the [Standard for Undersea Feature Names](#)

### 4.1 Specific terms

- (h) Names that are misspelled will not be accepted.
- (k) Where appropriate, the specific term should be named after the geographically connected and already named land based geographic feature, with consideration given to the original Māori name. For example: Haast Channel is associated with Waitototo River, so it was officially altered to Waitototo Channel, Foulwind Canyon is associated with Cape Foulwind, and Koutunui Point is associated with Koutunui Bank. Consistent and correct orthography should be applied to associated names.

---

<sup>16</sup> Sub-Committee on Undersea Feature Names

Location and extent of the feature

### *Lloyd Dome*

NZ Gazetteer entry: 'Kermadecs. A dome-shaped hill inside the caldera of Macauley Volcano. Rises to 75m from a depth of 820m and has an area of 21.28 sq km.'

Note the reference point is not inside of the caldera but on the seamount to the west. The reference point is consistent with the description in scientific literature but the text description in the Gazetteer is not.

Scientific literature: Northwest of the caldera is a 9km long 6km wide hill rising to 300-500m depth capped with small cones rising to 80m water depth.

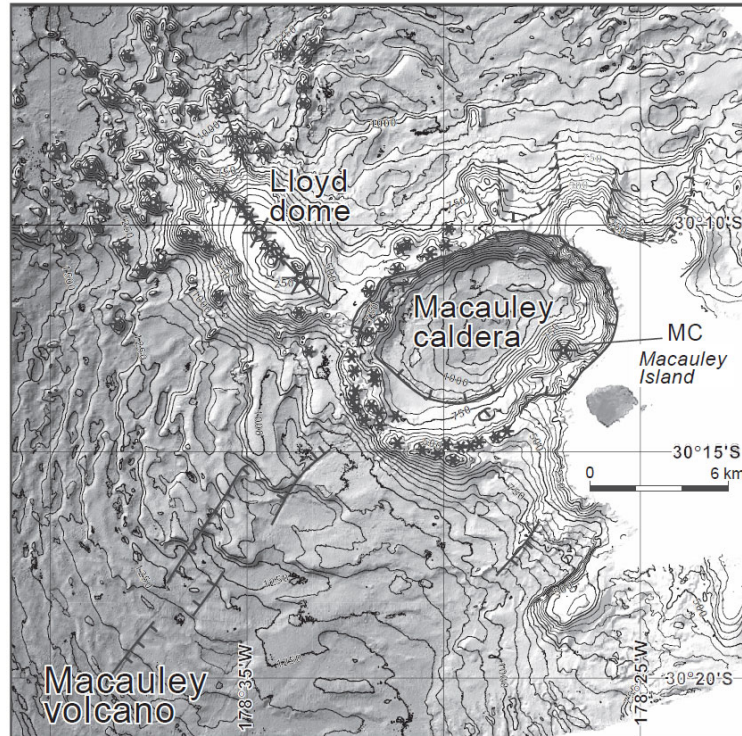


Fig. 6. Bathymetry and synoptic volcanic geology of Macauley complex including Macauley cone (MC) and caldera, and Lloyd dome. Interpretative key is given in Fig. 4.

Map of the features from Wright, I. C., Worthington, T. J., & Gamble, J. A. (2006). New multibeam mapping and geochemistry of the 30°–35° S sector, and overview, of southern Kermadec arc volcanism. *Journal of Volcanology and Geothermal Research*, 149(3-4), 263-296. <https://doi.org/10.1016/j.jvolgeores.2005.03.021>

Generic terms

The UFNC is requested to determine the correct generic term for the features from the precise definitions in the *Standard for Undersea Feature Names* and [Cookbook for generic terms of undersea feature names](#):

### *Lloyd Dome*

**Hill** (current undersea feature type)

Definition: A distinct elevation generally of irregular shape, less than 1000 m above the surrounding relief as measured from the deepest isobath that surrounds most of the feature.

Dimensions: Can be smaller than one square kilometre and can also be greater than 1000 square kilometres (33 x 33 kilometres).

Length to width ratio: Can be up to 3:1.

Depth: Any water depth.

Steepness: Sides are usually steeper than 5 degrees - 450 m change in elevation over 5 kilometres.

Comments: Often confused with KNOLL which has a smooth rounded shape. Deepest isobath has to encircle at least 50% of the feature.

Similar Features: Consider KNOLL definition if smooth rounded shape. Features more than 100 kilometres in any dimension with almost flat tops may better fit the definition for RISE or PLATEAU. If the feature has a length to width ratio greater than 3:1 consider RIDGE definition.

### **Knoll**

Definition: A distinct elevation with a rounded profile less than 1000 m above the surrounding relief as measured from the deepest isobath that surrounds most of the feature.

Dimensions: Can be smaller than 1 square kilometre and can also be greater than 1000 square kilometres (33 x 33 kilometres).

Length to width ratio: Can be up to 3:1.

Depth: Any water depth.

Steepness: Sides are usually steeper than over 5 degrees - 450 m rise over 5 kilometres.

Comments: Often confused with HILL which has a more irregular topography. Deepest isobath has to encircle at least 50% of the feature.

Similar Features: If the feature is not smooth and rounded or conical in shape consider HILL definition. If the length to width ratio is greater than 3:1 consider RIDGE definition. Features more than 50 kilometres in any dimension may better fit the definition for RISE or PLATEAU definitions.

---

Origins,  
associated  
place names  
and use

### *Lloyd Dome*

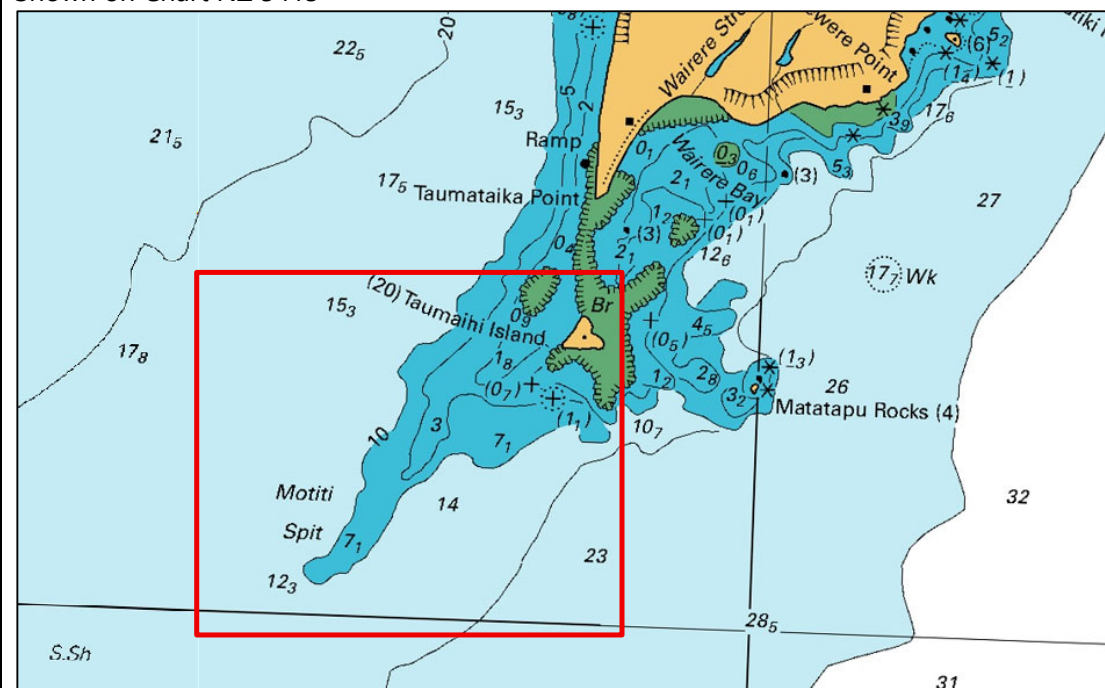
Lloyd Dome was named for the researcher Edward Forsyth Lloyd who participated in the survey tasks at Macauley Island by Russian research vessel R.V. *Vulkanolog* from 15-29 March 1988. Lloyd worked for the Department of Scientific and Industrial Research (predecessor of GNS and Earth Sciences NZ) as a Geological Surveyor.

Earliest use in Wright, et al. (2006) (refer supporting information). Less well used than Macauley Volcano.

## Mōtiti Shoal

Current location and description	176 23 32.3E 37 39 51.5S. A spit off the south coast of Motiti Island in the Bay of Plenty.
Generic term discussion	<p>The feature is a shallow and narrow slope extending undersea from the southwest end of Mōtiti Island for approximately 1.5km from 0m below chart datum to 12m, as shown on Chart NZ 5413.</p> <p>'Spit' is not a recognised generic term for undersea features in the <i>Undersea Standard</i> and Cookbook. 'Shoal' may be the most appropriate generic term as the feature is shallower than 30m depth and potentially hazardous to safe navigation.</p> <p>There is local use of the name Motiti Spit for the intertidal area of rocks and sand at the south of Mōtiti Island but reviewing historic hydrographic charts the name has always been shown for the undersea feature.</p>

Shown on Chart NZ 5413



Generic term definitions from the [Cookbook for generic terms of undersea feature names](#)

**SHOAL**

Definition: A shallow elevation composed of unconsolidated material that may constitute a hazard to surface navigation.

Dimensions: Can vary greatly from less than one square kilometre to greater than 1000 square kilometres.

Length to width ratio: Any length to width ratio.

Depth: Less than 30 m, but in some cases may be as deep as 50 m.

Steepness: Usually less than two degrees - 350 m change in elevation over 10 kilometres.

Comments: Shoals are composed of unconsolidated material (sand and mud rather than hard rock or coral). To fit definition of being avoided by shipping should be less than 30 m depth (or 50 m in some circumstances).

Similar Features: Use REEF definition if composed of consolidated material (rock, coral).

**REEF**

Definition: A shallow elevation composed of consolidated material that may constitute a hazard to surface navigation.

Dimensions: Can vary greatly from less than one square kilometres to 10,000s of square kilometres.

Length to width ratio: Any length to width ratio, often elongate and in some cases very long (e.g. Great Barrier Reef).

Depth: Less than 30 m, but in special cases may be as much as 50 m.

Steepness: Variable.

Comments: REEFS need to be hard and composed of consolidated material (not sandy). To fit definition of being avoided by shipping should be less than 30 m depth (or 50 m in some circumstances).

Similar Features: Consider SHOAL definition if composed of unconsolidated material (sand).

Additional information

While Motiti Spit is named on hydrographic charts for an undersea feature, Motiti Spit appears to be in local use instead for the intertidal area between Taumataika Point and Taumaihi Island:

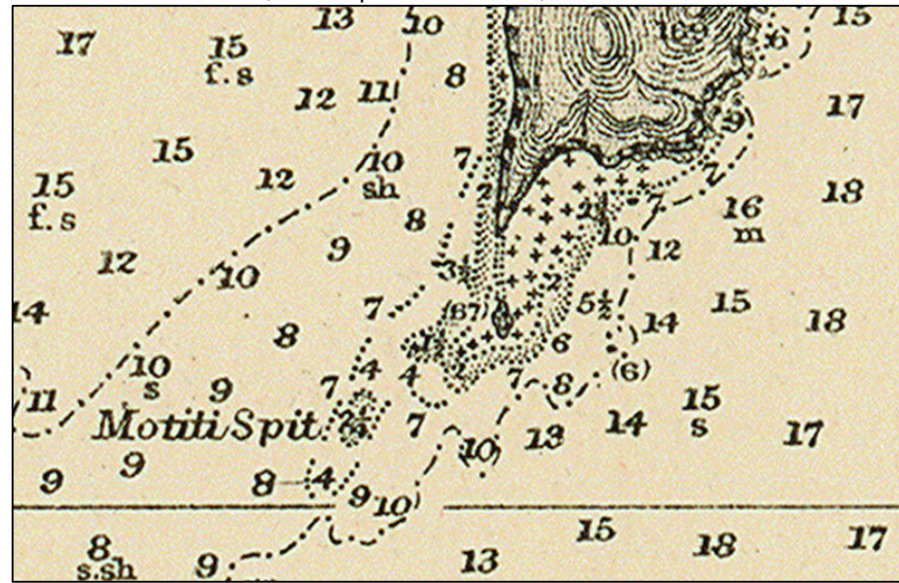


Motiti Spit, the site of 1831 battle and the long vanished plateau of Hurepupo<sup>17</sup>

<sup>17</sup> Taken from <https://taurangahistorical.blogspot.com/2019/12/captain-jack-and-prince-of-denmark.html>

Use of Motiti Spit on hydrographic charts is consistent over time, ie, the cartographic text has not migration incorrectly from the dry area to the undersea feature over time:

From Chart BA 3332 (1903, updates to 1922).



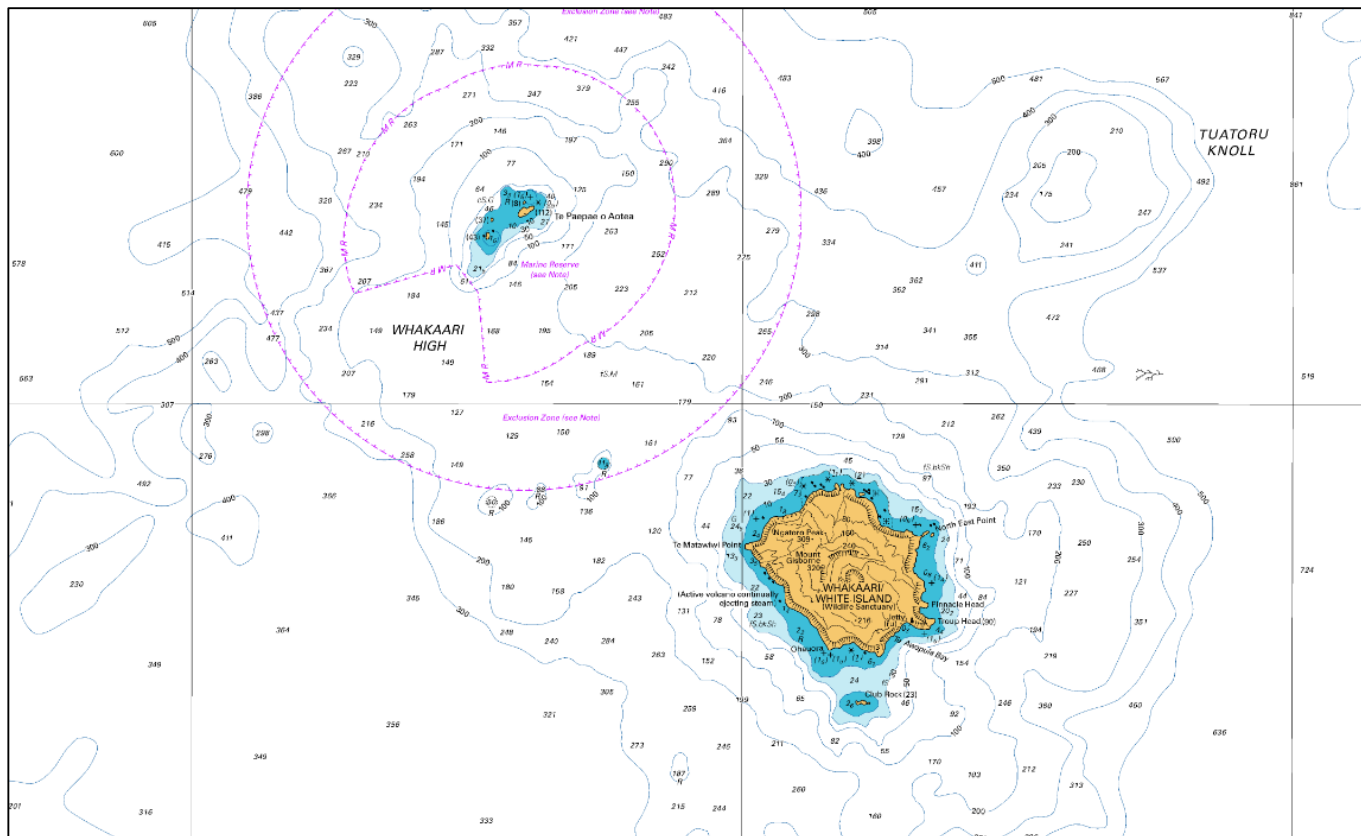
Motiti Spit is not mentioned in the current *Admiralty Sailing Directions*.

Motiti Spit is not named on official topographic maps.

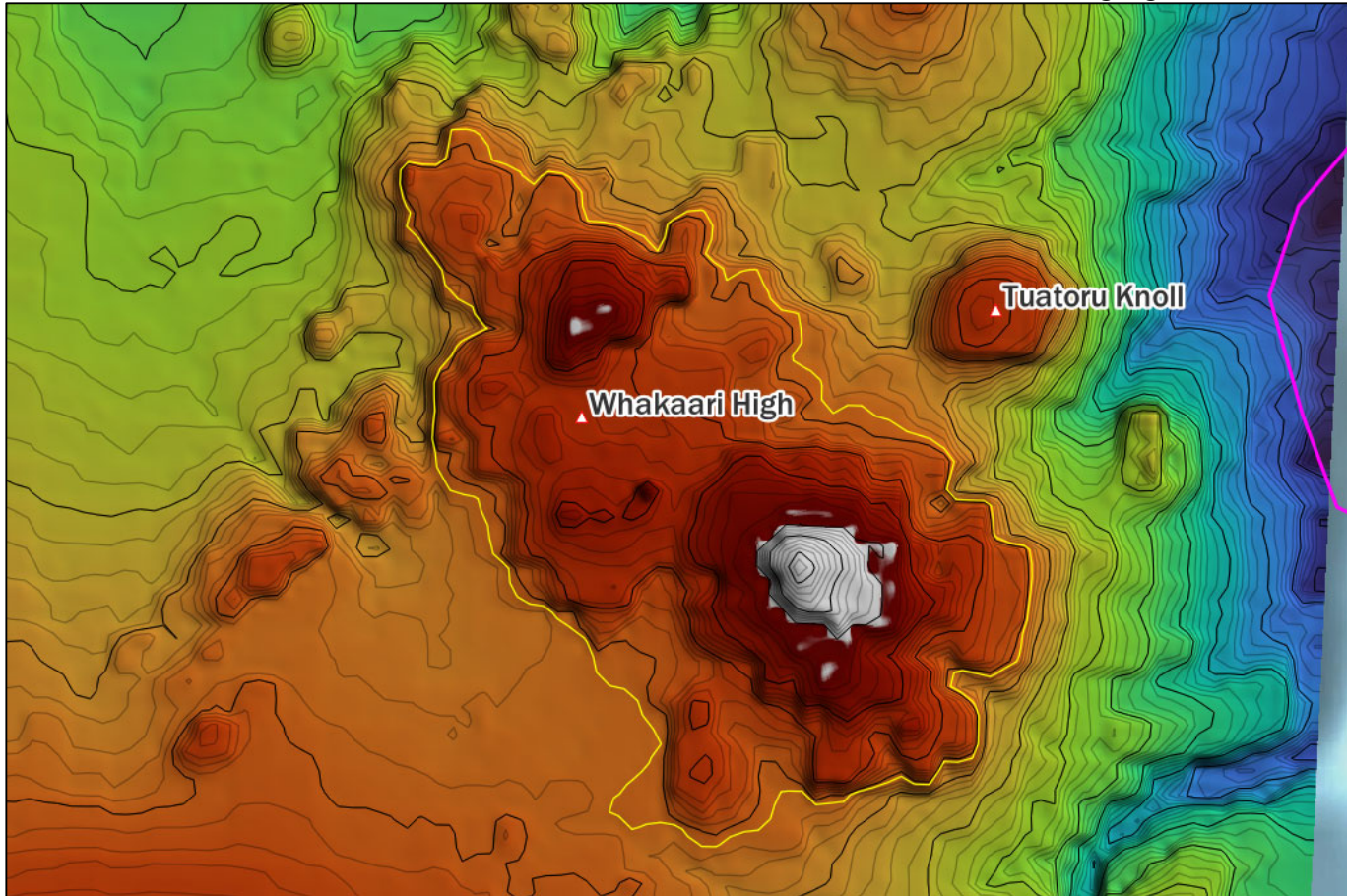
# Whakaari Shelf

Current location and description	177 07 48.5E 37 29 41.0S. Whakaari / White Island. Bay of Plenty, North Island. A ridge connecting the surrounding area of Whakaari / White Island to Te Paepae o Aotea, northwest of Whakaari / White Island. Ridge depth is 150m.
Generic term discussion	The feature Whakaari / White Island and Te Paepae o Aotea sit on appears to be a shelf that is contiguous to ~320m depth, with a shallower saddle between the two features rising to between -220 to -180m depth.

Shown on Chart NZ 5423



From NIWA 250m (2023) data. 20m contours with bolded 100m contours. -320m contour highlighted:



Generic term definitions from the [Cookbook for generic terms of undersea feature names](#)

**SHELF**

Definition: The flat or gently sloping region adjacent to a continent or around an island that extends from the low water line to a depth, generally about 200 m, where there is a marked increase in downward slope.

Dimensions: Can be less than 10 kilometres wide, but often extend for 100s kilometres from shore line.

Length to width ratio: Variable - depends on the shape of the coastline.

	<p><u>Depth:</u> Less than 200 m. <u>Steepness:</u> Usually less than 1 degree - 175 m change in elevation over 10 kilometres, except in the case of very narrow shelves less than one or two kilometres wide.</p> <p><u>Comments:</u> Same definition as CONTINENTAL SHELF.</p> <p><u>Similar Features:</u> If not adjacent to a continent or around an island consider TERRACE definition.</p>
Additional information	Named in association with Whakaari / White Island.

## Pāhaua Bank

Current location and description

175 37 00.0E 41 39 00.0S.

A bank 19km east of Mātakitaki-a-Kupe / Cape Palliser. Minimum depth is about 400m.

Generic term discussion

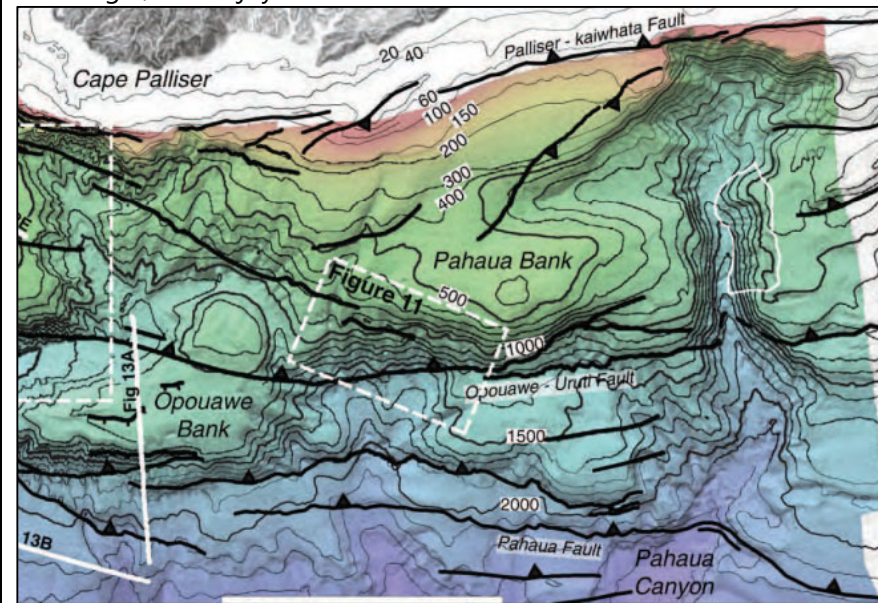
The feature is much deeper than the 'generally less than 200m' indicated in the *Cookbook* for a 'bank'.

However, adjacent similar features such as Ōpouawe Bank (2018) were approved as official with the generic term 'Bank'. This was prior to the 2021 publication of the SCUFN *Cookbook*.

Defining and renaming the feature as a Ridge or Spur may significantly expand the extent of the named feature, ie, Pahaua Bank may only have been intended to apply to the feature between 500m and 380m depth, not the wider feature between Ōpouawe Bank and Pāhaua Canyon.

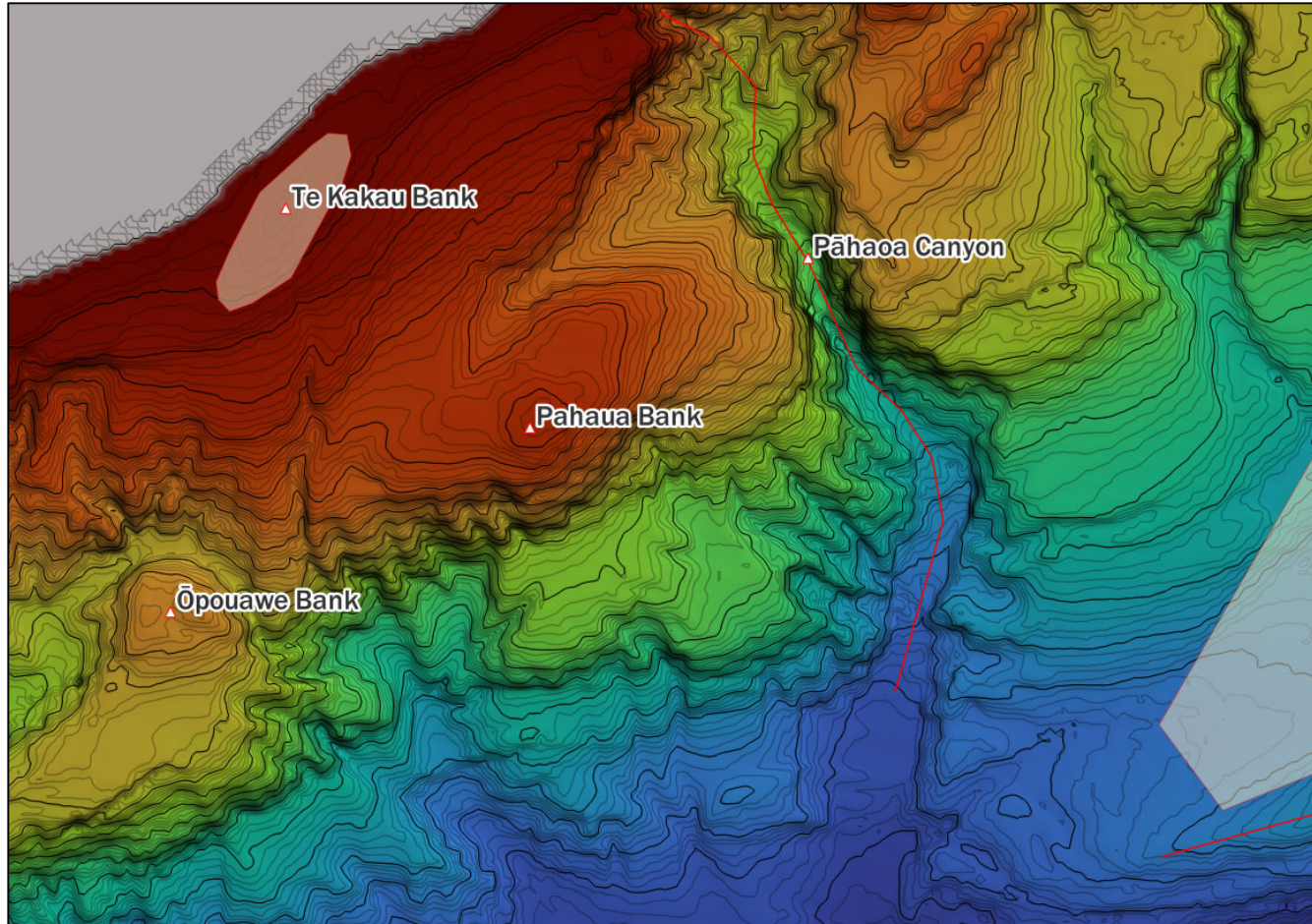
Alternatively, the feature would also appear to meet the definition of an undersea Terrace, with all the surrounding features being terraces.

From Fig 4, Mountjoy et al 2009<sup>18</sup>:



<sup>18</sup> Mountjoy, J.J., Barnes, P.M. and Pettinga, J.R., 2009. Morphostructure and evolution of submarine canyons across an active margin: Cook Strait sector of the Hikurangi Margin, New Zealand. *Marine Geology*, 260(1-4): 49

From NIWA 250m (2023) data. 20m contours with bolded 100m contours:



Generic term definitions from the [Cookbook for generic terms of undersea feature names](#)

**RIDGE**

Definition: An elongated elevation of varying complexity, size and gradient.

Dimensions: Usually greater than 10 kilometres long and can be over 1000 kilometres in length.

Length to width ratio: Greater than 3:1.

Depth: Any water depth.

Steepness: Variable, but usually has sloping sides greater than 5 degrees - 450 m rise over 5 kilometres.

	<p><u>Comments:</u> RIDGEs can host other features such as PEAKs, PINNACLEs, SEAMOUNTs, SPURs etc. RIDGEs can be confused with SEAMOUNT CHAINs, but they should be a continuous feature with no gaps between SEAMOUNTs.</p> <p><u>Similar Features:</u> If the length to width ratio is less than 3:1 consider GUYOT, HILL, KNOLL or SEAMOUNT definitions. If feature is composed of individual SEAMOUNTs and is not continuous, consider SEAMOUNT CHAIN definition.</p> <p><b>SPUR</b></p> <p><u>Definition:</u> A subordinate RIDGE protruding from a larger feature.</p> <p><u>Dimensions:</u> Not usually less than 10 kilometres in length but in rare cases may extend for more than 100 kilometres from RIDGE.</p> <p><u>Length to width ratio:</u> Greater than 3:1.</p> <p><u>Depth:</u> Any water depth.</p> <p><u>Steepness:</u> Sides are usually steeper than over 5 degrees - 450 m rise over 5 kilometres.</p> <p><u>Comments:</u> Often confused with RIDGE. SPURs are subordinate to another feature, but if the SPUR has greater than 50% of the area of the feature it protrudes from then it may be called a RIDGE.</p> <p><u>Similar Features:</u> Consider RIDGE definition if the feature has greater than 50% of the area of the feature it protrudes from.</p> <p><b>BANK</b></p> <p><u>Definition:</u> An elevation of the seafloor at depths generally less than 200 m, but sufficient for safe surface navigation, commonly found on the CONTINENTAL SHELF or near an island.</p> <p><u>Dimensions:</u> Can vary greatly from less than one square kilometre to 100s of square kilometres.</p> <p>Length to width ratio: Typically, about 1:1, but can be elongate up to 3:1. In rare cases may be greater than 3:1.</p> <p><u>Depth:</u> Less than 200 m and greater than 30 m (largest ships today have a draft of 25 m)</p> <p><u>Steepness:</u> Usually less than two degrees - 350 m change in elevation over 10 kilometres.</p> <p><u>Comments:</u> BANKs are commonly found on the SHELF but may also occur at the summit of a SEAMOUNT or GUYOT. The definition is only for that part of the feature less than 200 m, therefore a BANK with one name may occur on a SEAMOUNT with a different name.</p> <p><u>Similar Features:</u> If length to width ratio is greater than 3:1 consider RIDGE definition.</p>
Additional information	<p>The adjacent Pahaua Canyon was altered to Pāhaoa Canyon in 2016. It's unclear why Pahaua Bank was not considered at the same time. It was possibly because Pahaua Bank was not named on bathymetric maps or hydrographic charts.</p> <p>The name was noted by the Board at its 18 October 2019 under the s.24 approvals project for Wellington Region. It was not approved on the basis the UFNC should first review the name.</p>