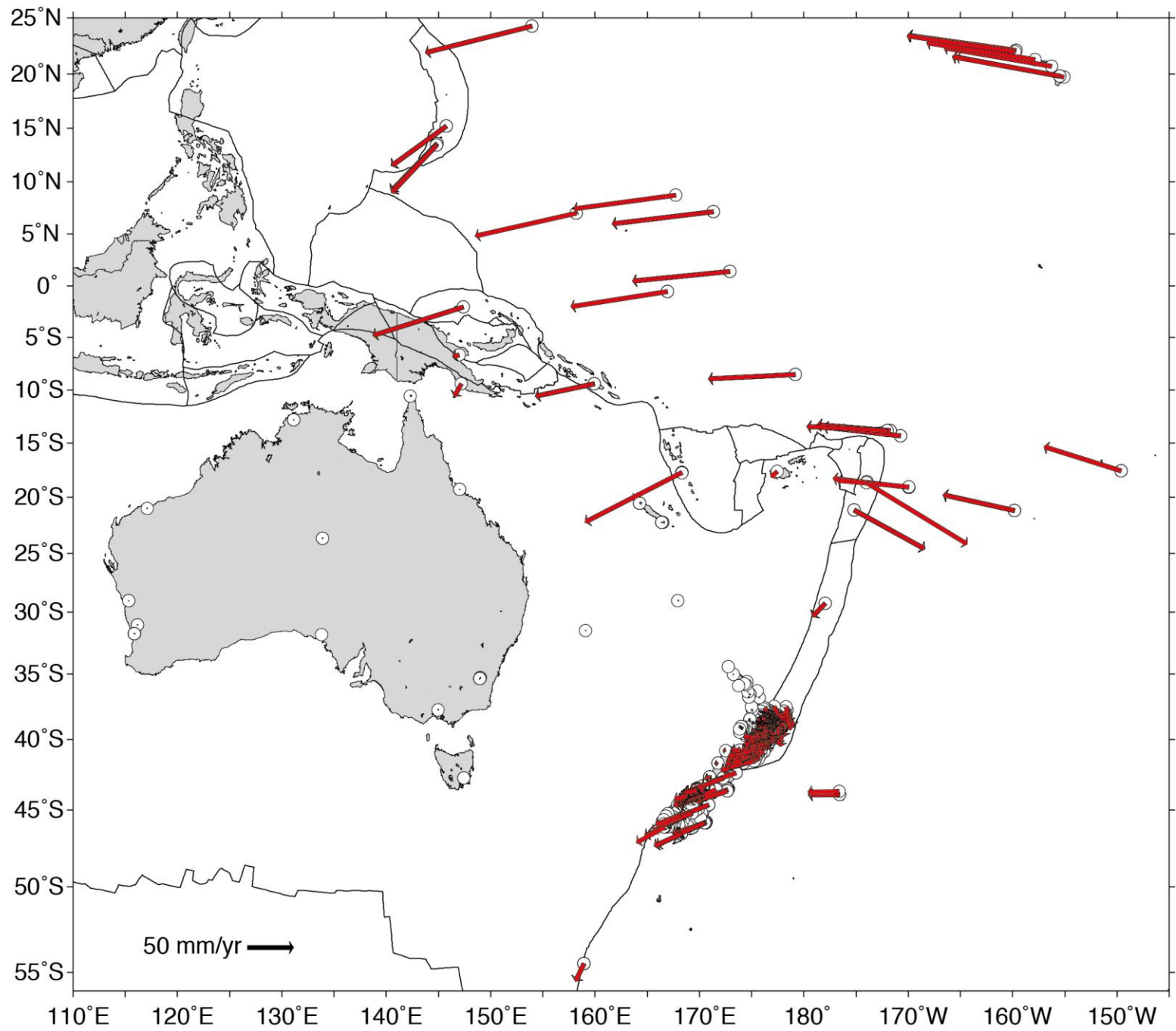
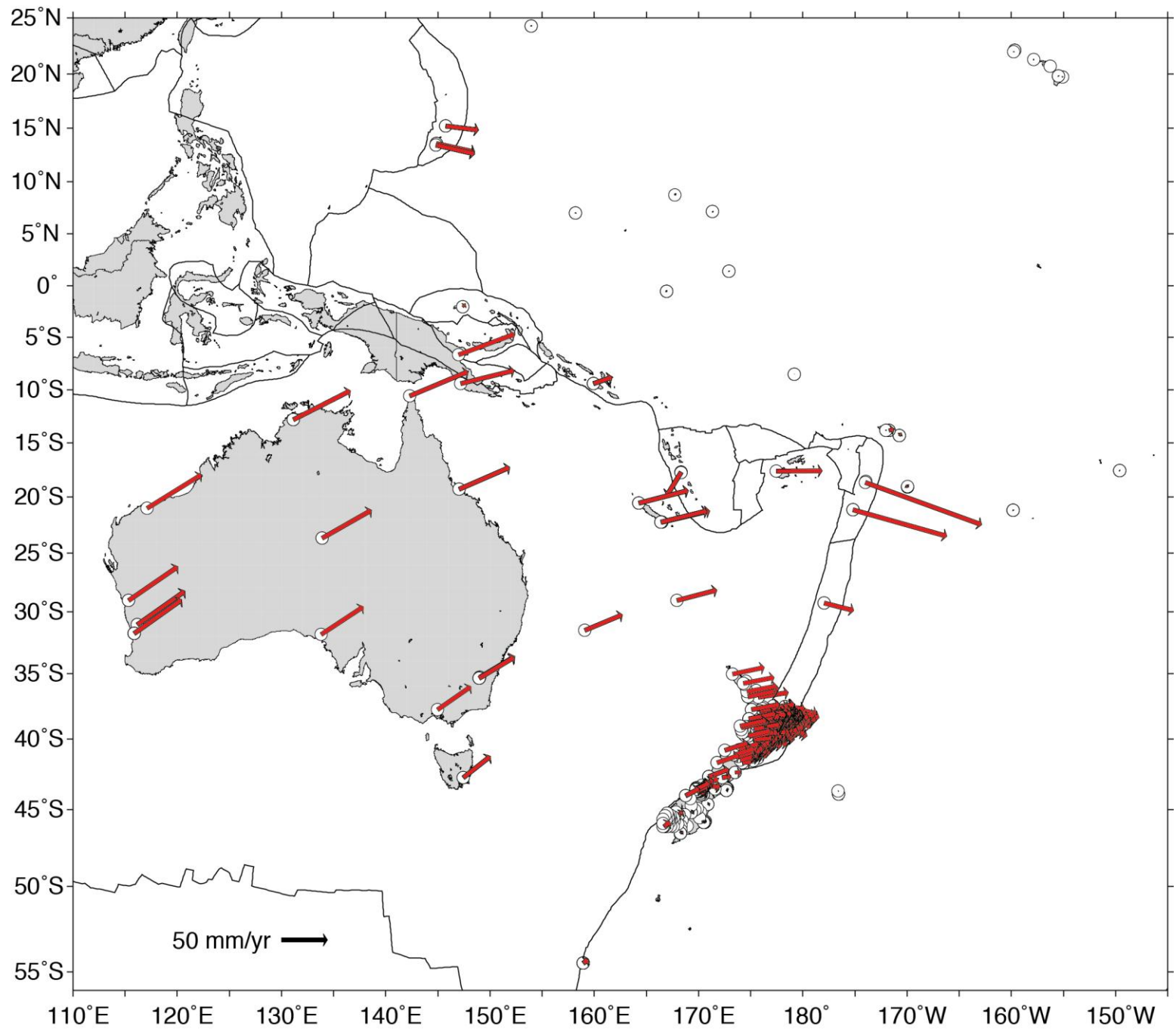


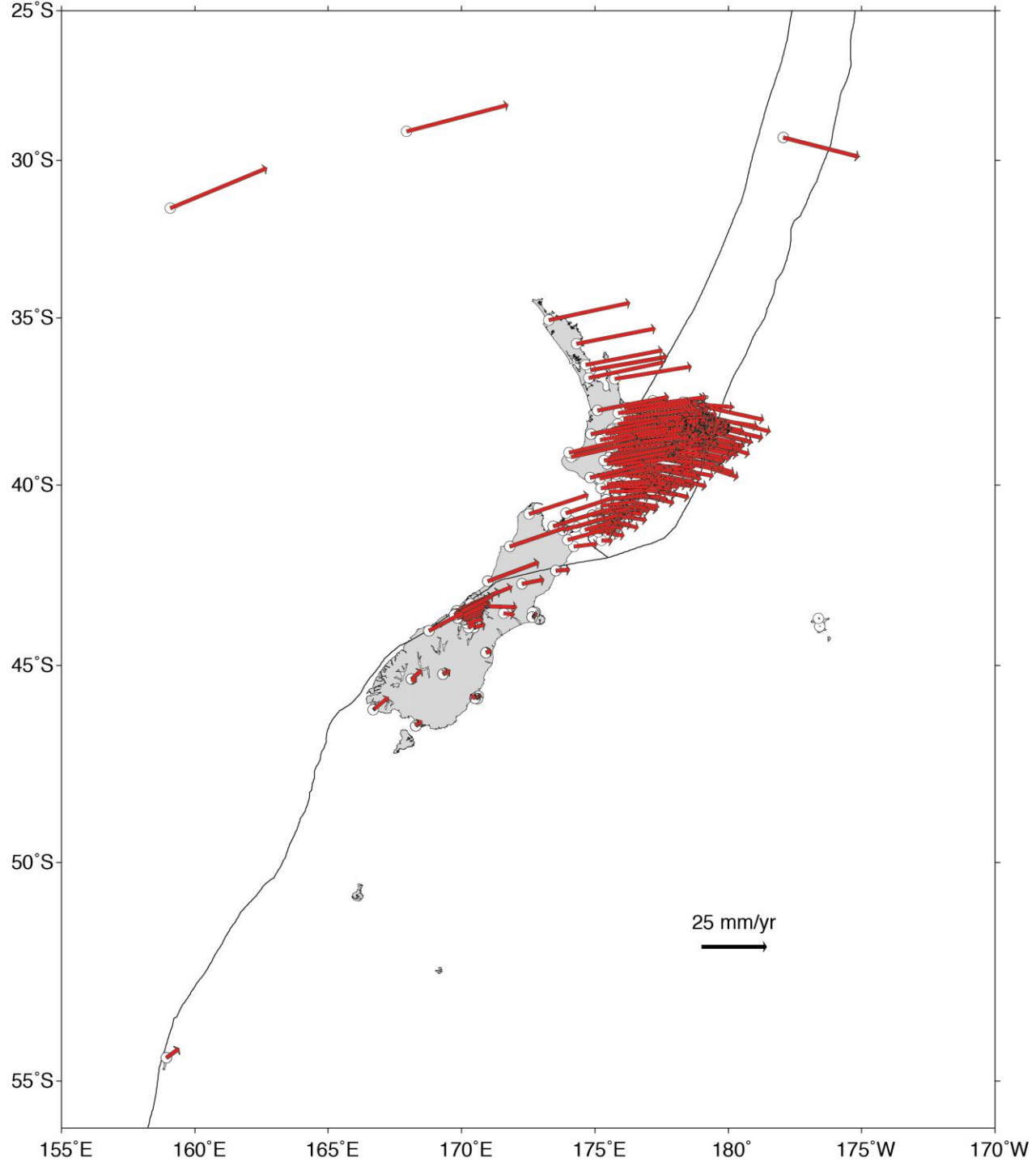
Sigrún Hreinsdóttir
GNS Science

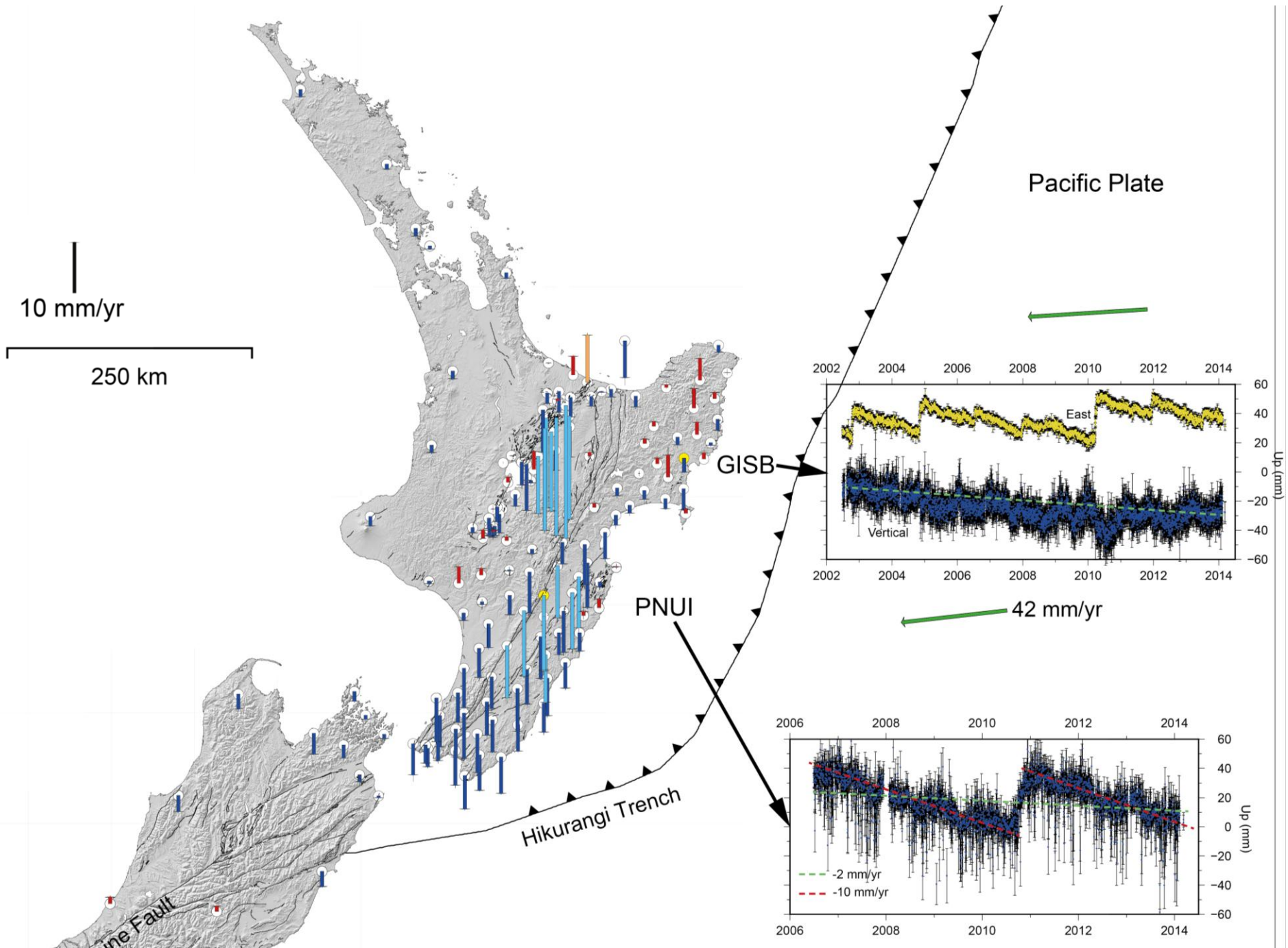
1 December 2014

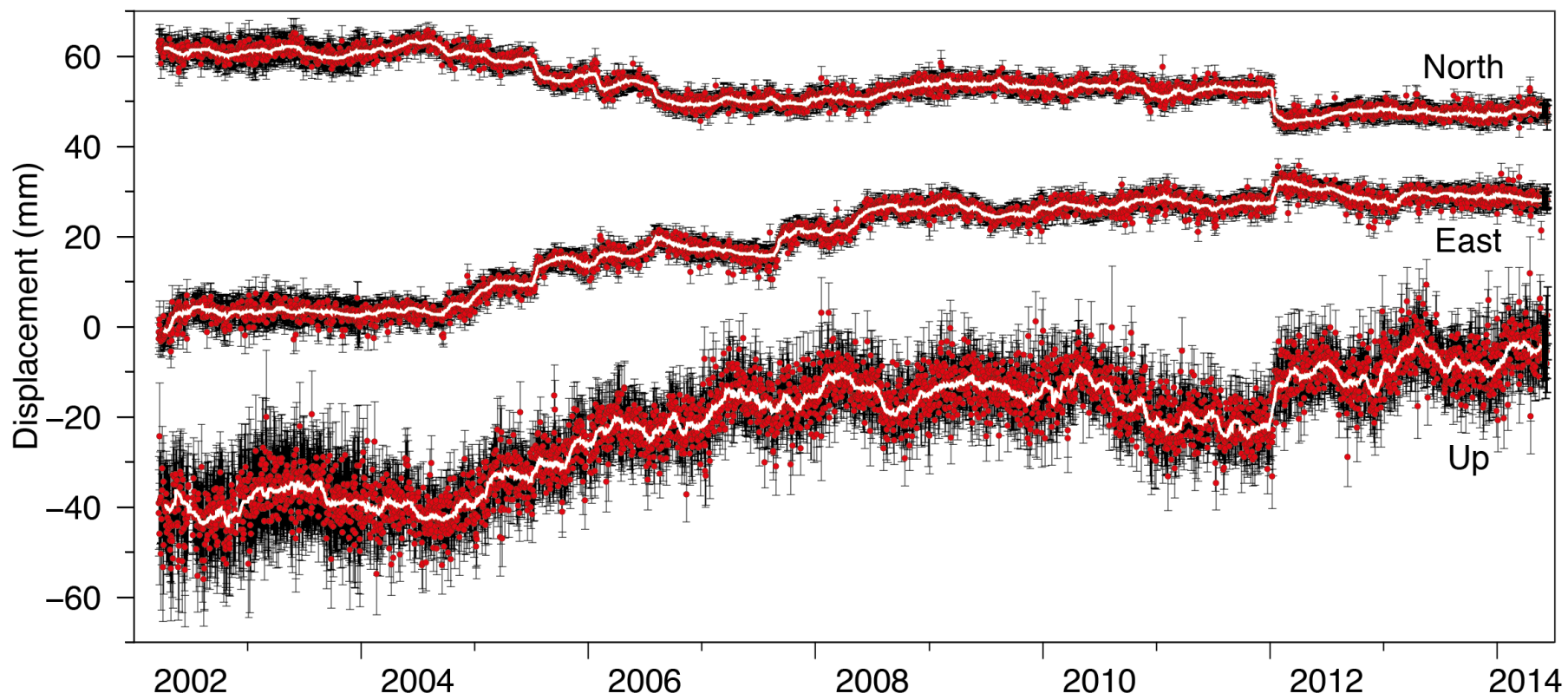
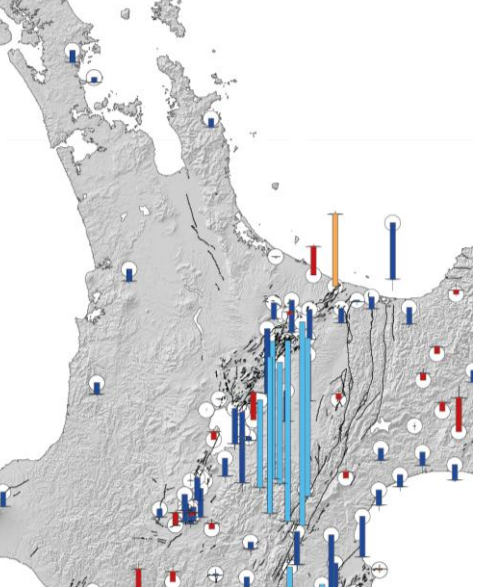
Time dependent deformation in New Zealand

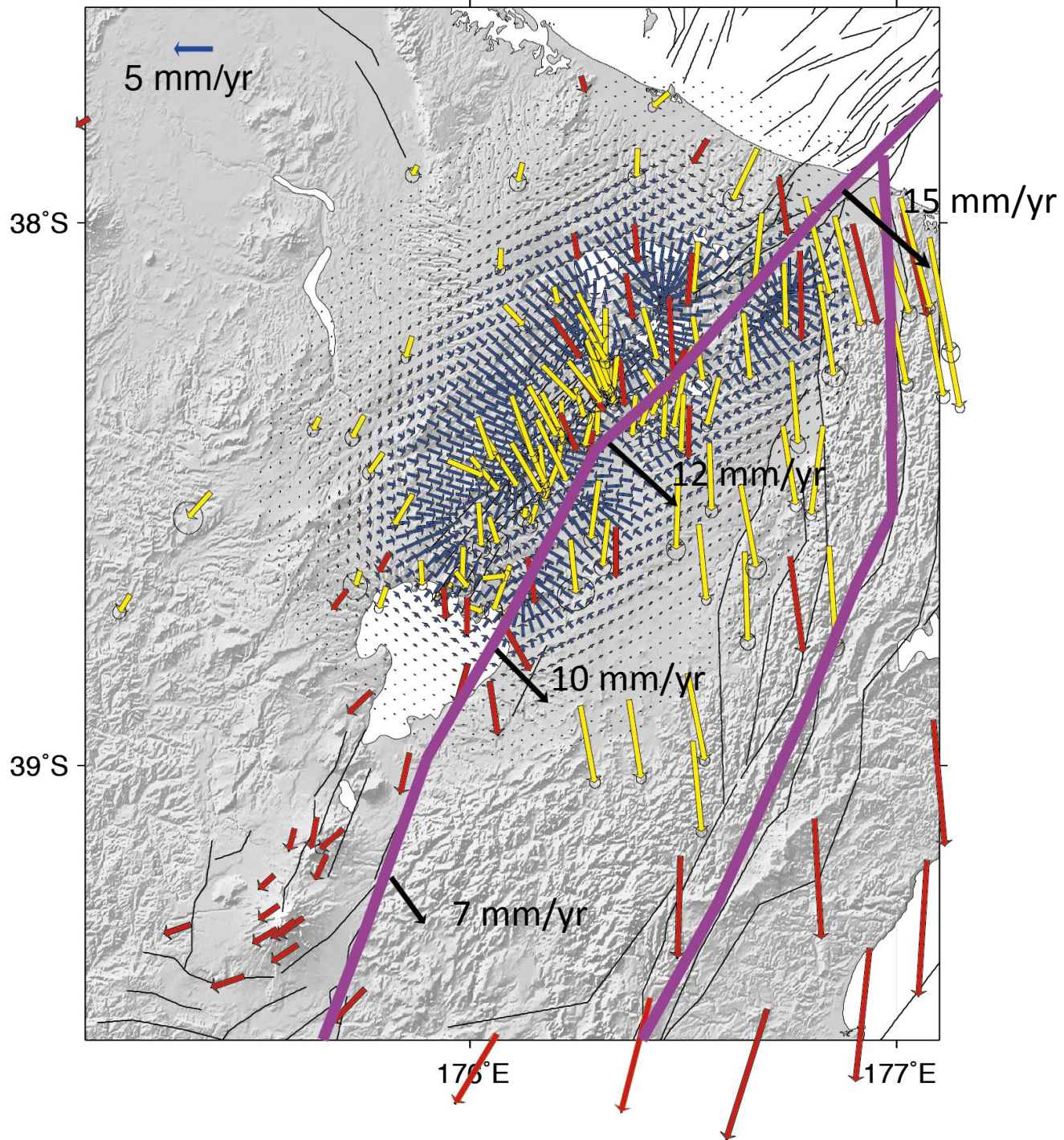




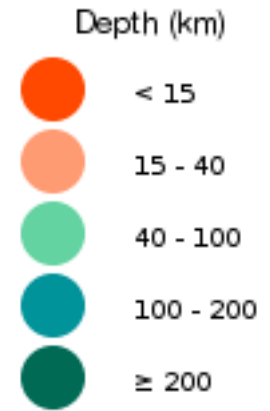
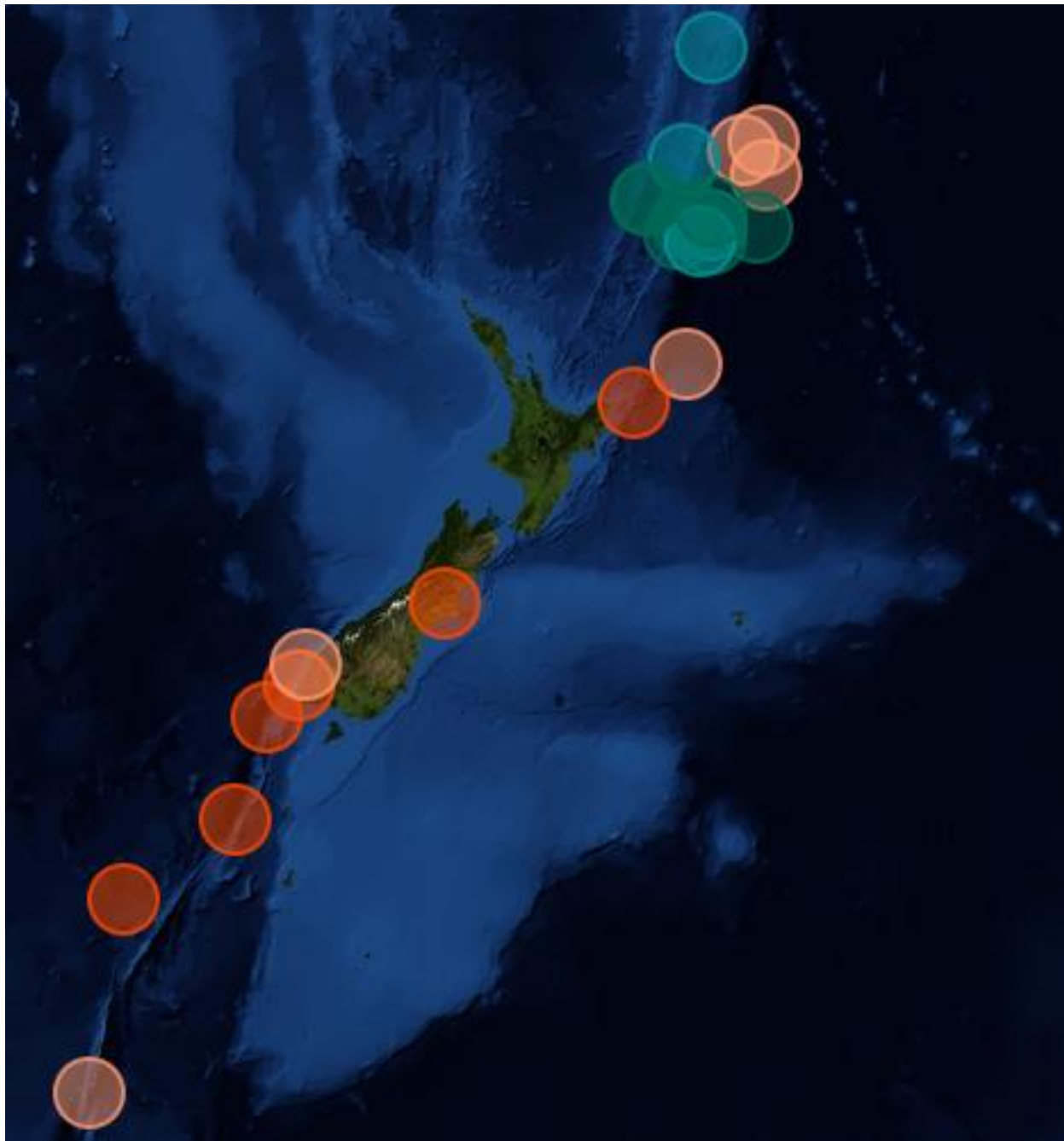


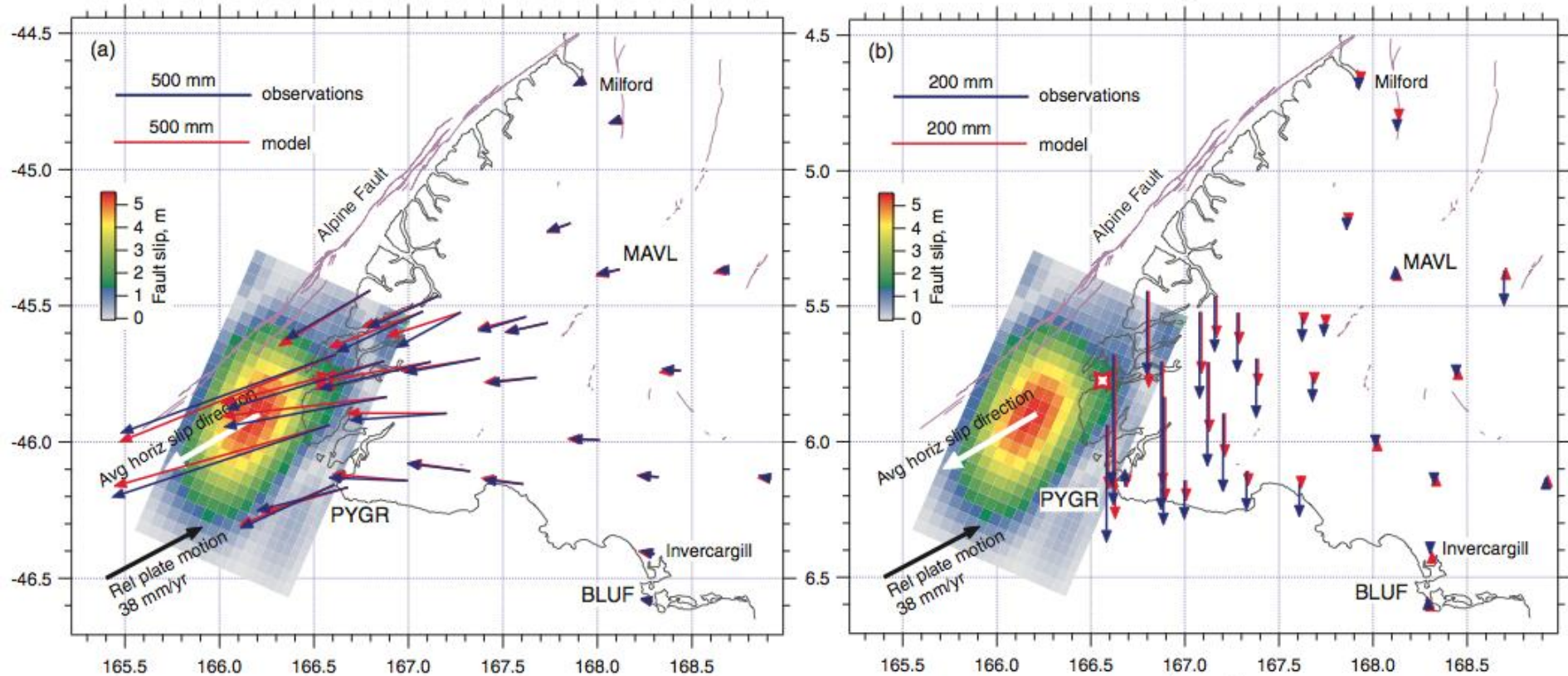






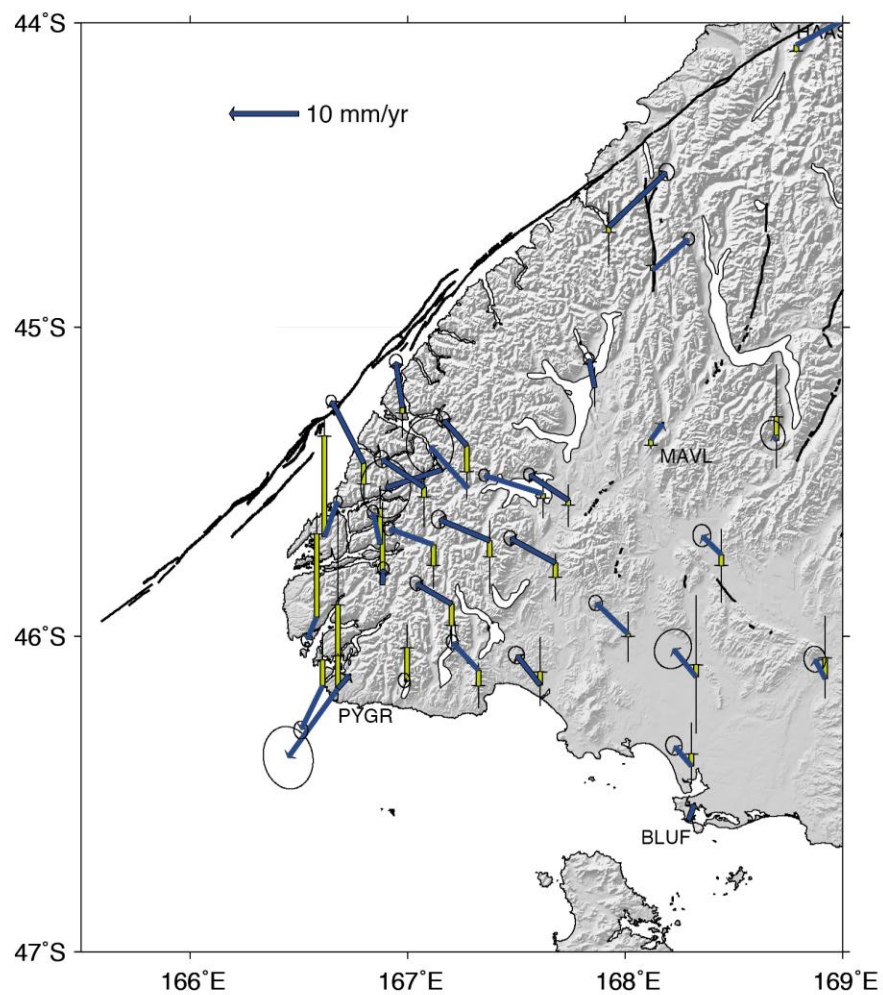
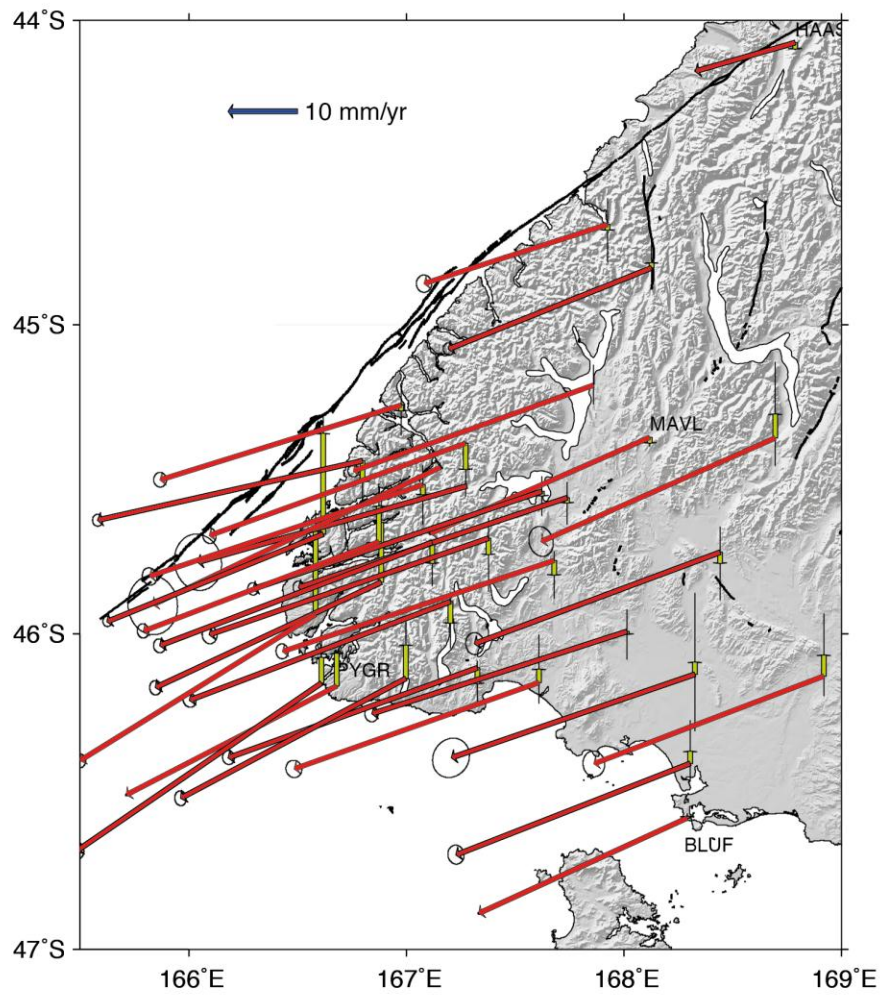
Geonet
1990 to present
M7+

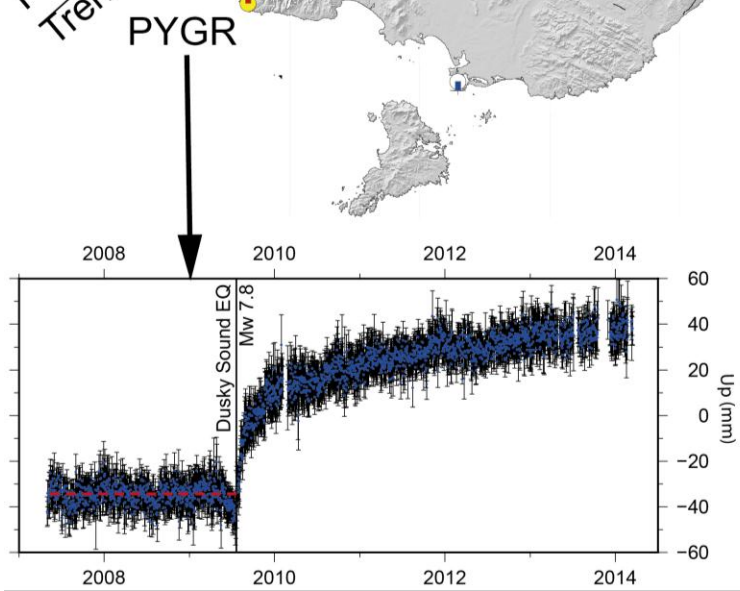
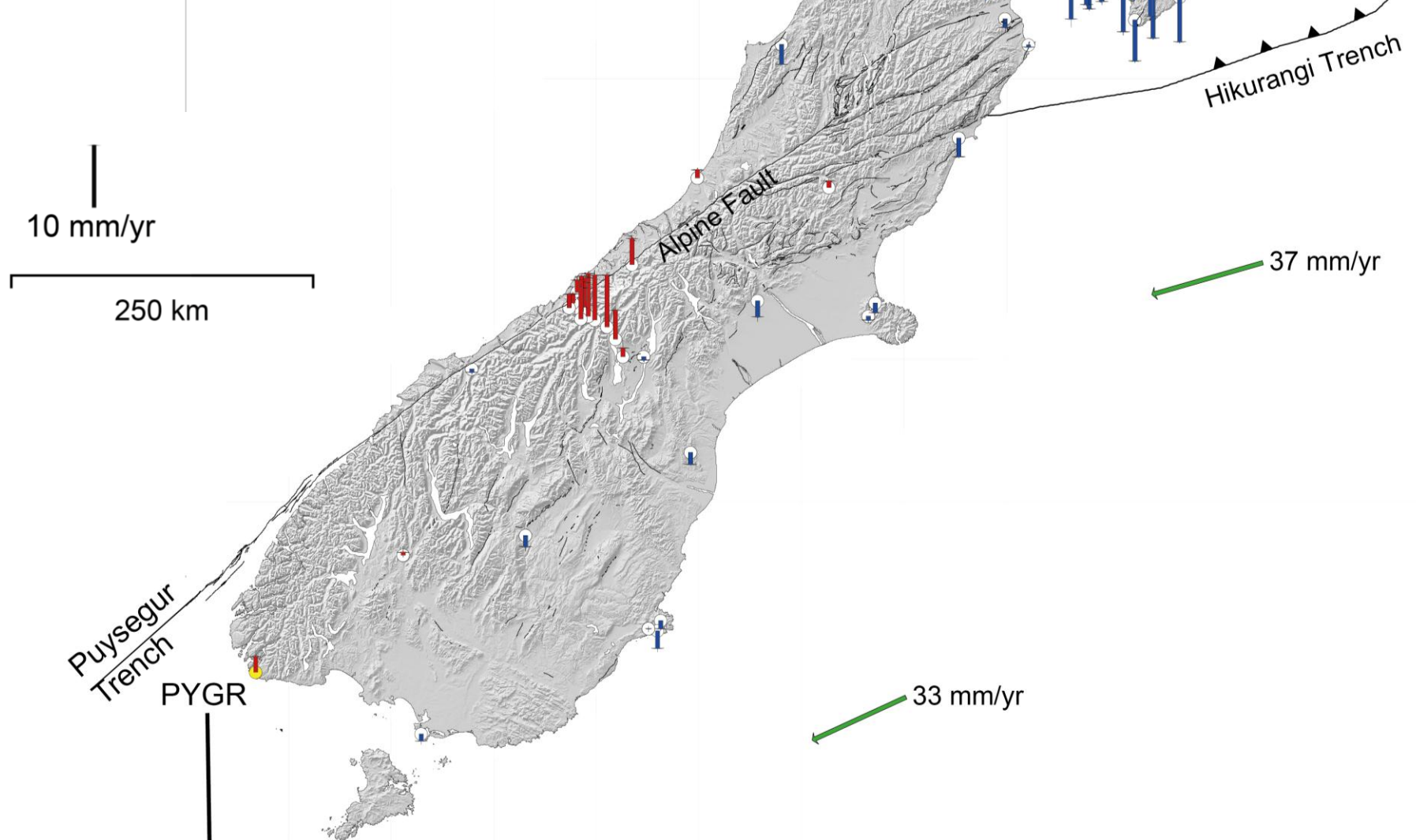


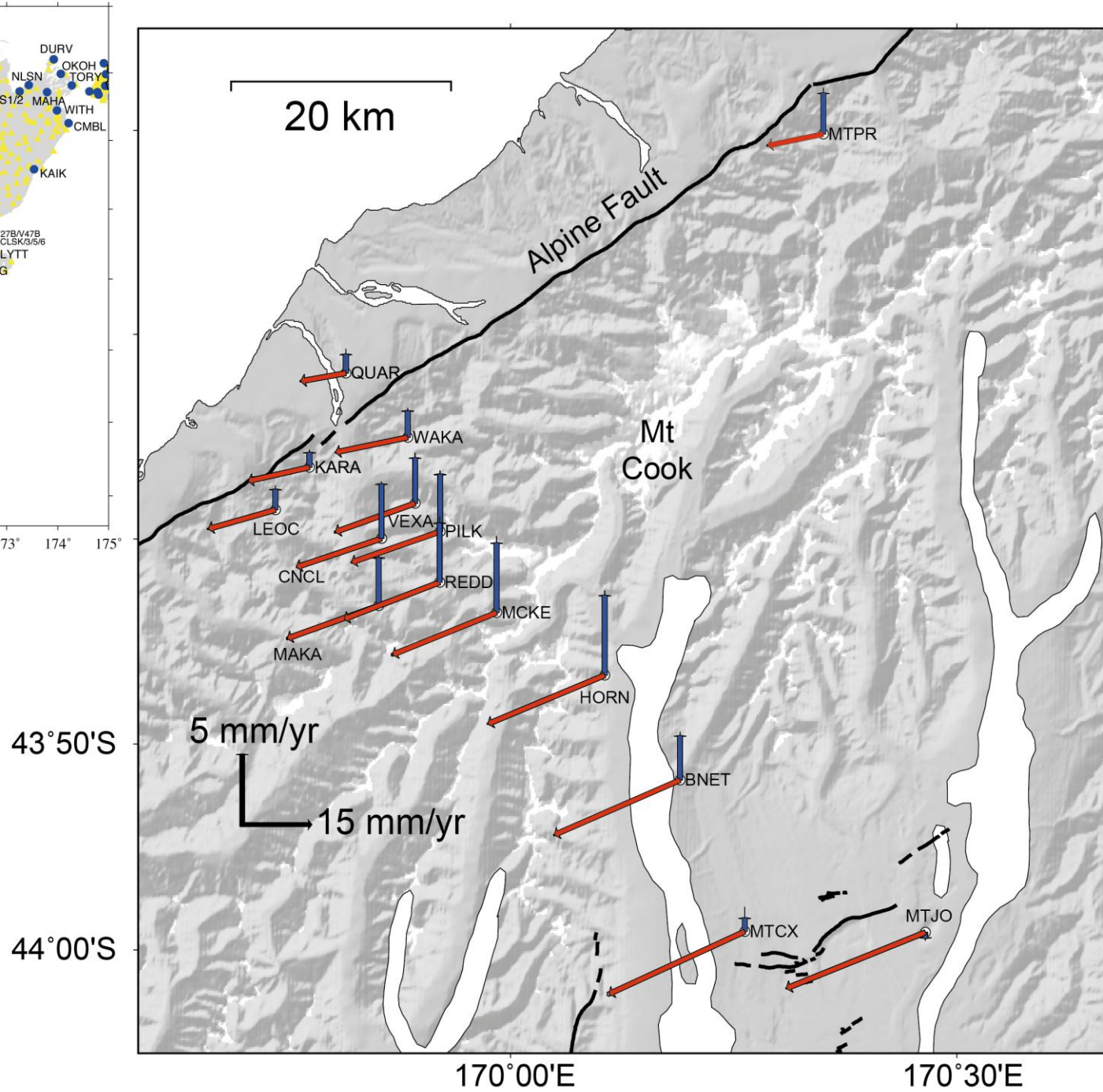
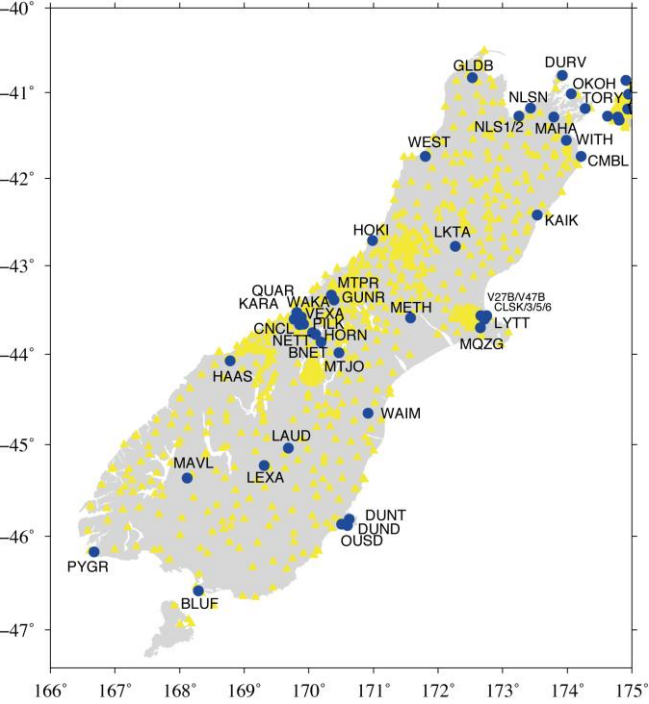


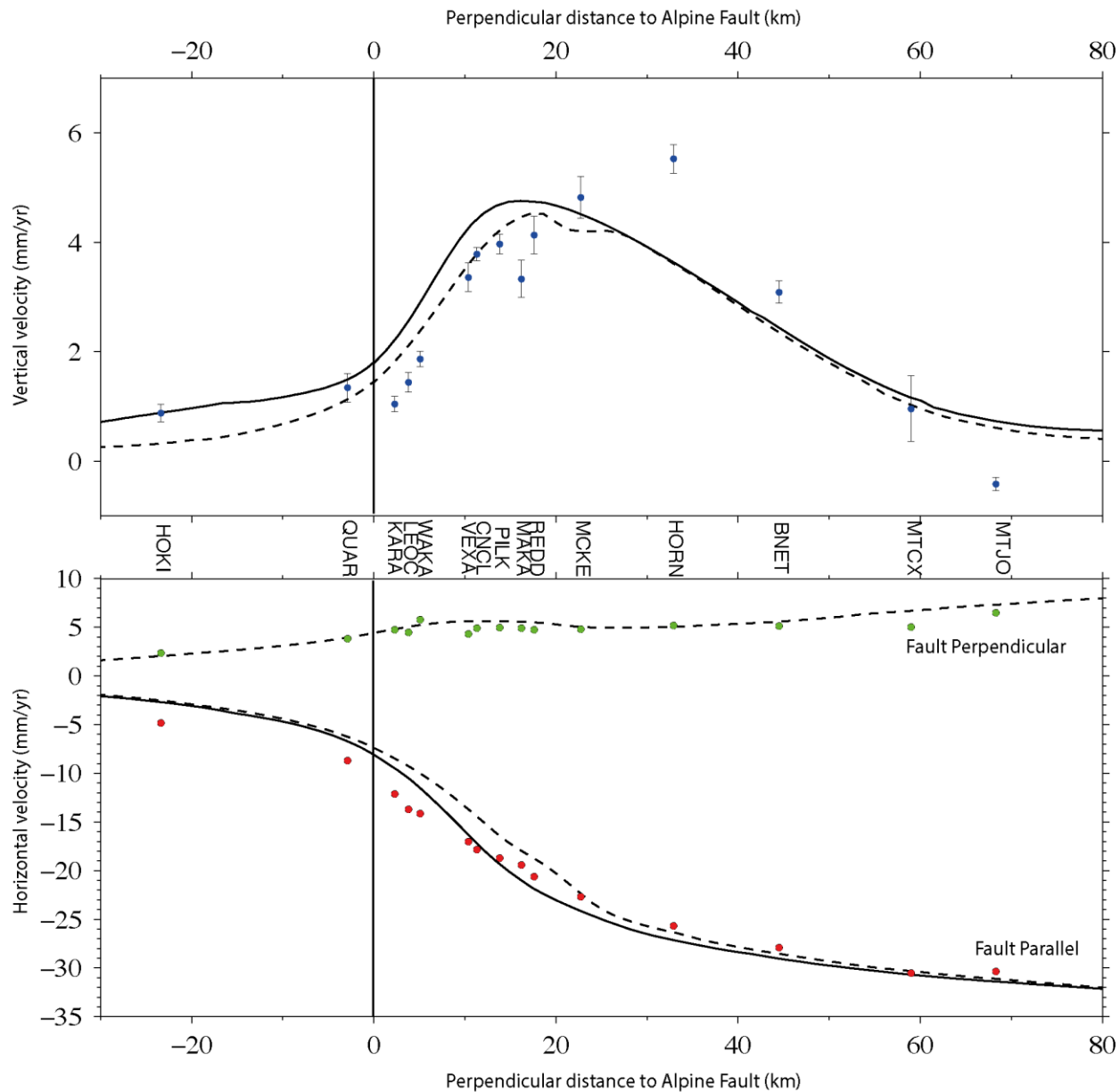
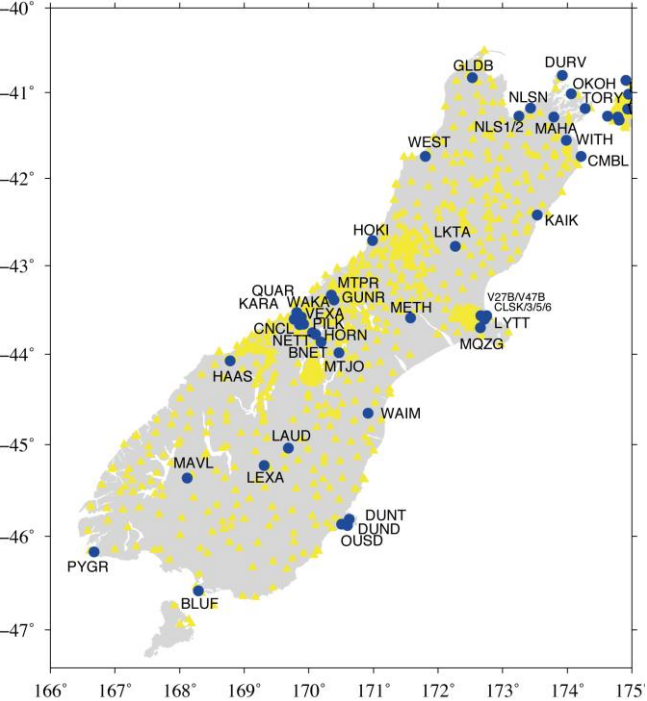
Oblique slip on the Puysegur subduction interface in the 2009 July M_w 7.8 Dusky Sound earthquake from GPS and InSAR observations: implications for the tectonics of southwestern New Zealand

J. Beavan,¹ S. Samsonov,^{1*} P. Denys,² R. Sutherland,¹ N. Palmer¹ and M. Denham²









Model profiles from:

Ellis, S., J. Beavan, D. Eberhart-Phillips, and B. Stöckhert (2006), Simplified models of the Alpine Fault seismic cycle: Stress transfer in the mid- crust, *Geophys. J. Int.*, doi:10.1111/j.1365-246X.2006.02917.x.