

Investing in Community Resilience

An aerial photograph of Wellington, New Zealand, showing the city skyline, harbor, and surrounding hills. The city is built on a hillside, with a dense cluster of buildings in the center. The harbor is filled with water, and several ships are visible. The surrounding hills are covered in green vegetation.

Ainslie Ryder
Wellington Region Emergency
Management Office (WREMO)

Wellington Region Emergency Management Office

Community Resilience Strategy

Second Edition

Building Capacity - Increasing Connectedness - Fostering Cooperation



Our guiding principles...

- Listen first
- Support local ideas
- Encourage ownership
- Focus on end-users
- Be informed by evidence
- Innovate
- Engage proactively
- Be inclusive
- Be transparent
- Be hospitable
- Collaborate
- Act ethically
- Have fun!

What communities do...



Historic home ravaged by Gita's fury

Tim O'Connell · 09:00, Mar 03 2018



The Ryder homestead near Riwaka has housed six generations of the family.

The owners of a century-old Riwaka homestead face an uncertain few weeks to hear if their home will survive another generation.

The Ryder family's Riwaka homestead, at the base of Takaka Hill, was badly damaged in a landslide during ex-Cyclone Gita on February 20.

February 20, 2018

Dad

There has been a large slip come down our creek and water has come through the house. I am at warren and Gail s . Mum is at Graham & clares

6:08 PM

D





Search this chat

Cancel



6:51 PM

M

Shit happens!

6:51 PM

Sam Ryder

Hahah

8:05 PM

SR

Did you eat a bad curry?

8:05 PM



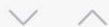
8:06 PM ✓✓

M

Mum

If I did the effects have lasted for nearly three weeks!!!!

8:07 PM





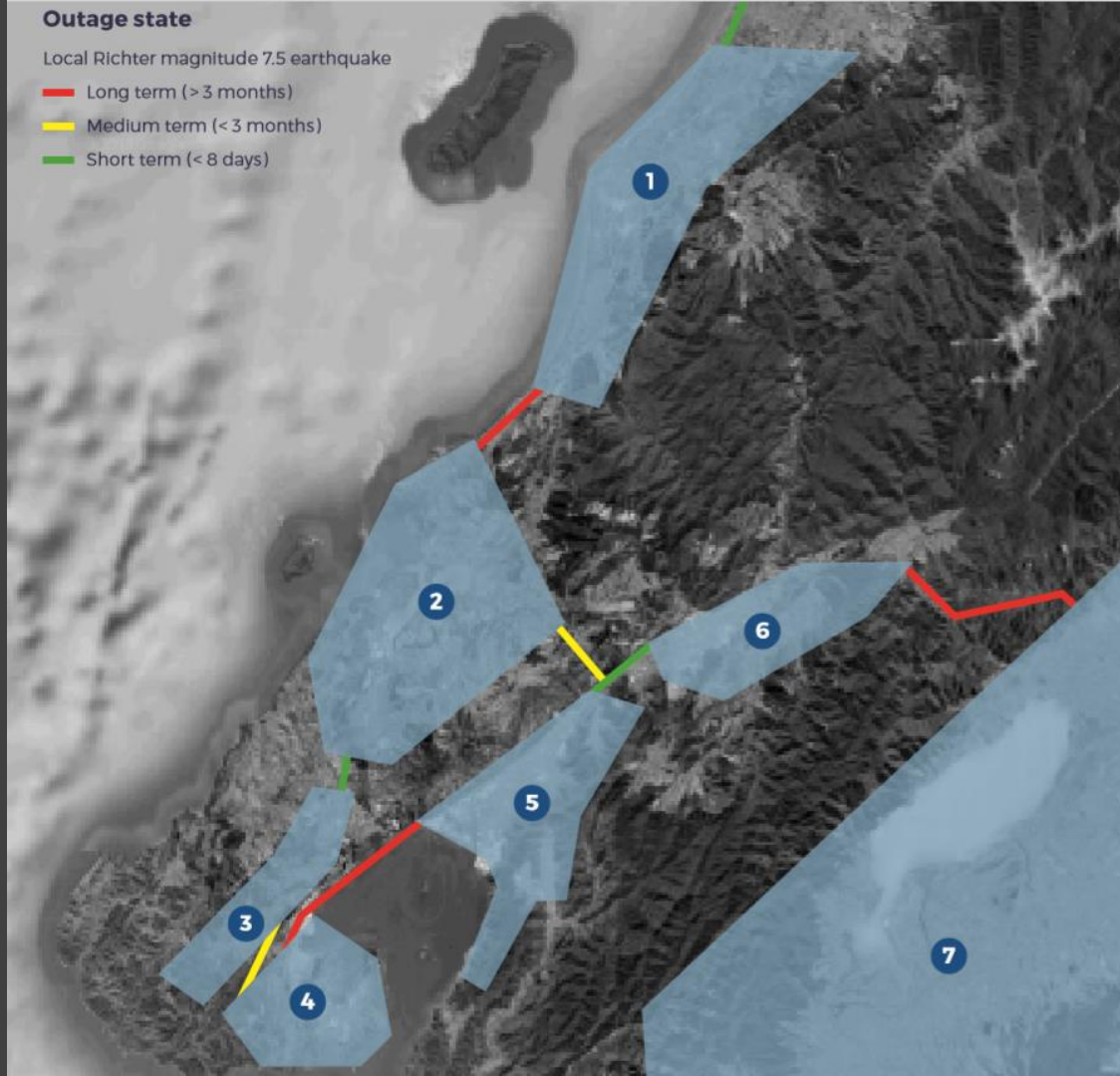
Outage state

Local Richter magnitude 7.5 earthquake

Long term (> 3 months)

Medium term (< 3 months)

Short term (< 8 days)



Wellington Region
Earthquake Plan, 2018

BIG CHALLENGE FOR OUR SECTOR

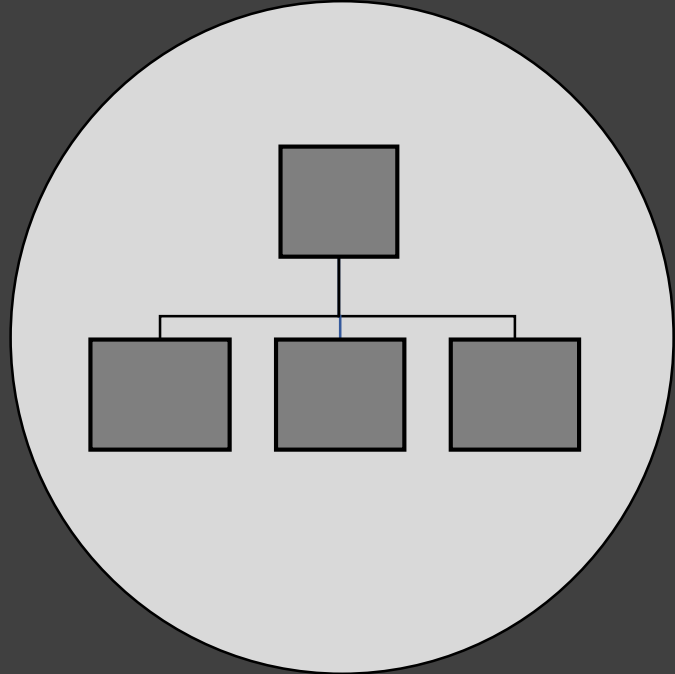
**How do we best
provide structure to
an unstructured
community response?**

Disaster Response

Community Response



Official Response

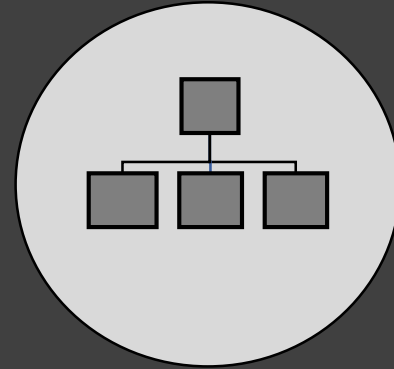


Disaster Response

Community Response



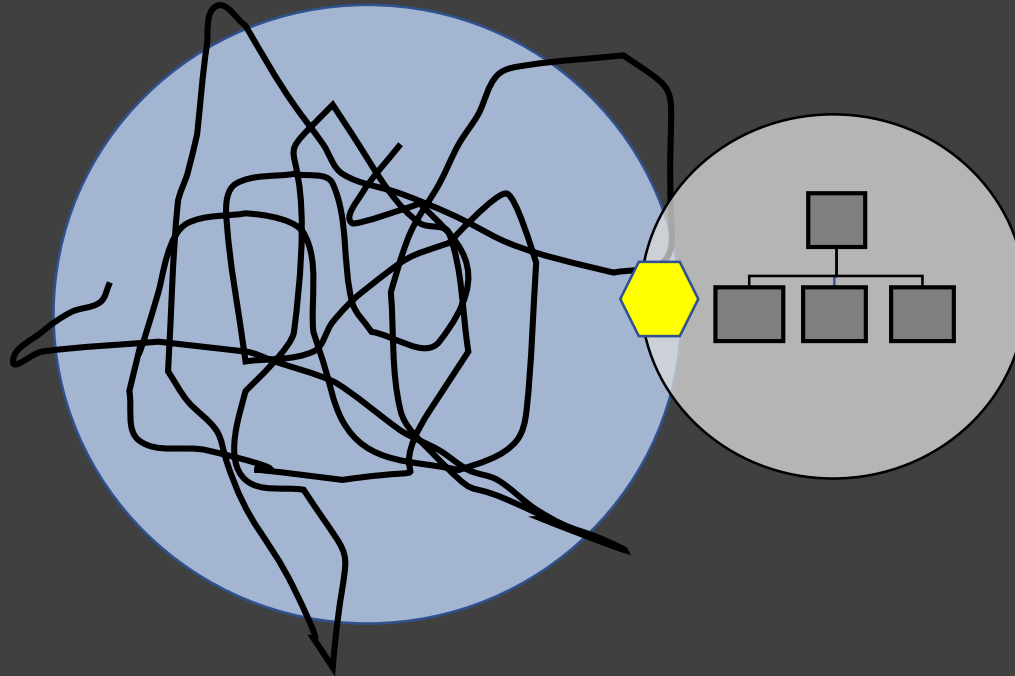
Official Response



Disaster Response

Community Response

Official Response



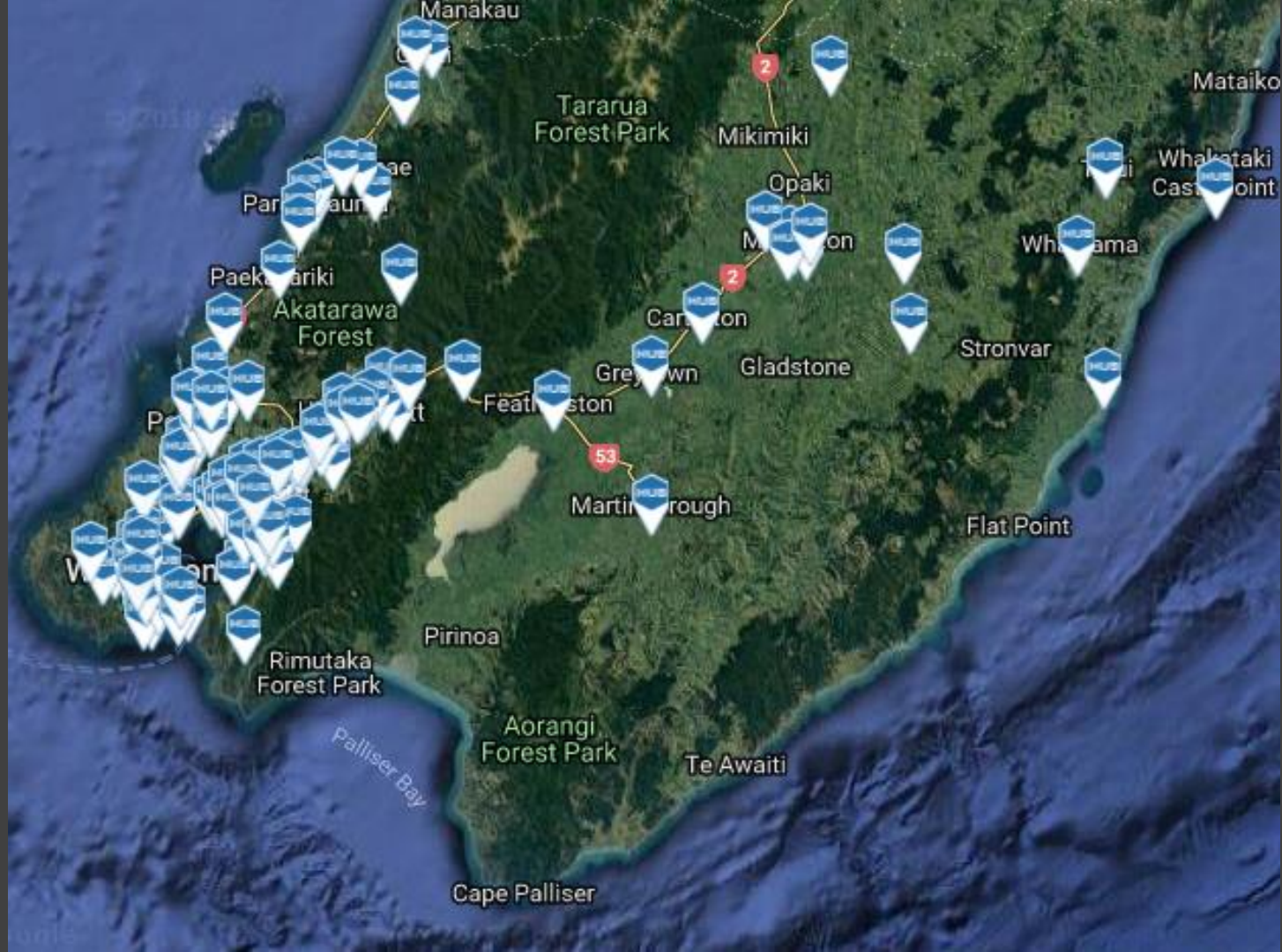
AFTER AN EARTHQUAKE

Where would you go to ask for and offer help?





- **Share information**
- **Share resources**
- **Comfort & support one another**
- **Connect and coordinate with the official response (EOC)**



Community Response Model

**AFTER A DISASTER
SOLVE PROBLEMS CLOSE TO HOME FIRST**

Needs, offers and information

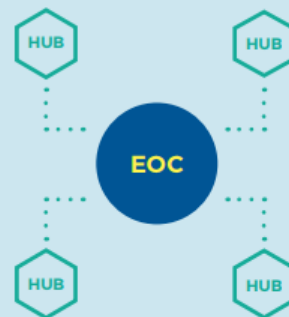


Needs, offers and information

**THEN GO TO YOUR LOCAL
COMMUNITY EMERGENCY HUB**



**YOUR LOCAL EMERGENCY OPERATIONS CENTRE
WILL SUPPORT YOUR ACTIVITIES**



Support and information



Support and information

A photograph of four men standing around a white and red motorboat on a trailer. The boat has a blue outboard motor with the number '90' on it. The men are dressed in outdoor gear like jackets and hats. In the background, there's a white bus and a sign for 'French Pass Campground'. The scene is set in a lush, green, wooded area.

Graham

Richie

Foss

Steve

- Fisherman
- Skipper
- Orchardist
- Policeman
- Stevedore
- Truck driver
- Heavy machinery operator
- Excellent at backing trailers

- Business owner
- Teacher
- 200+ years' combined camping experience
- (Almost) unlimited access to firewood
- Grow great wine grapes

Pomare Community Emergency Hub Guide

This Hub is a place for the community to coordinate your efforts to help each other during and after a disaster.

Objectives of the Community Emergency Hub are to:

- › Provide information so that your community knows how to help each other and stay safe.
- › Understand what is happening.
- › Solve problems using what your community has available.
- › Provide a safe gathering place for members of the community to support one another.



Contents

Hub objectives and the wider response

→ | [SEE PAGE 3](#)

Facility map

→ | [SEE PAGE 4](#)

1

Accessing the Hub

Getting into the Hub safely and finding equipment

→ | [SEE PAGE 5](#)

2

Working as a team

Getting organised and choosing roles

→ | [SEE PAGE 9](#)

3

Setting up

How to make best use of the space you have

→ | [SEE PAGE 26](#)

4

Before you open

Making sure everyone understands what you are here to do

→ | [SEE PAGE 30](#)

5

Your community's response

Local ideas and solutions for challenges you may face

→ | [SEE PAGE 32](#)

6

Thinking about recovery

Considerations for your community for the future

→ | [SEE PAGE 50](#)

Needs and Offers

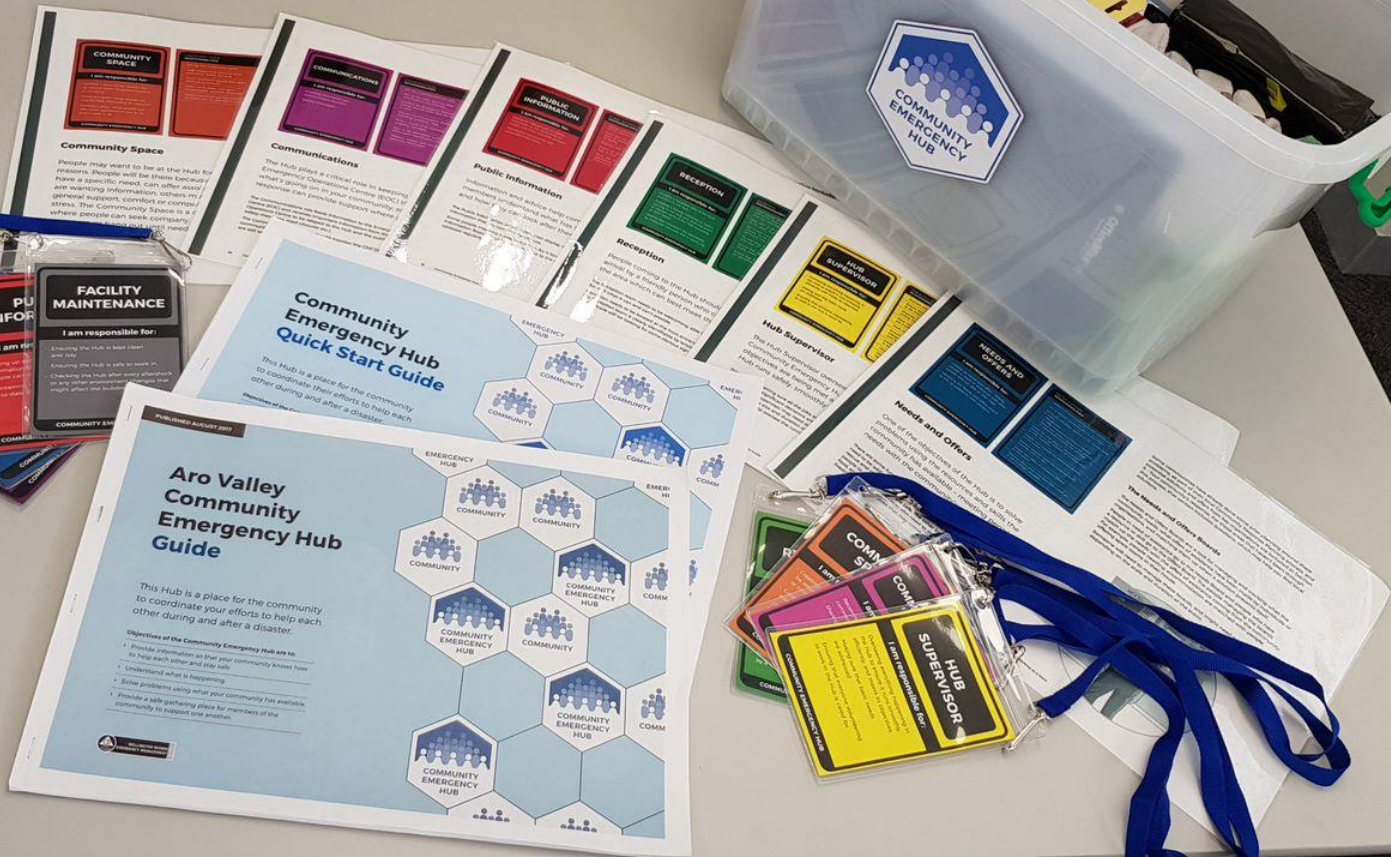
You are an intuitive person who understands people's strengths and needs!

A pivotal role at the Hub, the Needs and Offers role is responsible for matching up the people who are offering to help with the people who need it most.

One of the objectives of the Hub is to solve problems using the resources and skills the community has available – meeting people's needs with the community's offers of assistance.



Be inclusive



Listen first

Community Response Planning

A word cloud of community-related terms, tilted diagonally. The words are in various colors and sizes, representing different themes. The most prominent words are 'friendly', 'space', 'neighbours', 'schools', 'transport', 'community', 'people', 'access', 'park', 'green', 'river', 'history', 'home', 'flat', 'sports', 'friends', 'varied', 'location', 'walking', 'valley', 'support', 'spaces', 'medical', 'handy', 'clean', 'activities', 'family', 'biking', 'quiet', 'wilderness', 'togetherness', 'beautiful', 'shops', 'central', 'affordability', 'centre', 'recreation', 'valley', 'location', 'walking', 'valley', 'support', 'spaces', 'medical', 'handy', 'clean', 'activities', 'family', 'biking', 'quiet', 'wilderness', 'togetherness', 'beautiful', 'shops', 'central', 'affordability', 'centre', 'recreation'.

friendly
central shops beautiful togetherness affordability centre
home flat
access
park
schools
quiet wilderness recreation
green
river
clean
sports
history
family biking
handy
people
community
support spaces medical
valley location walking
transport
friends
varied
neighbours
space
friendly

Local resources

During Community Response Planning the following local resources were identified that could be useful for various purposes during an emergency. Use this information as a starting point when looking for solutions to community needs. Local resources may need to be shared with nearby communities, so communicate with your neighbouring hubs to work out the most efficient use of the available resources. Check with the owner to coordinate the use of their resources.

Coordinate with neighbouring Community Emergency Hubs

- Taita Central School, 33 Churton Crescent, Taita
- Pomare School, 4 Partridge Street, Taita
- Avalon Primary School, 10 Gordon Street, Avalon
- Rata Street School, 73 Rata Street, Naenae

Infrastructure

- › Water reservoir Wingate/Naenae
- › Emergency water tank at Pomare School
- › Emergency water tank at Taita Central School
- › Wingate bridge
- › Rail overbridge
- › Wellington Water building
- › BP Petrol Station, 1217 High Street

Groups and networks of people

- › St Matthew's Anglican Church, 53 Reynolds Street
- › Hosanna Church, 1117 High Street
- › Pathways Christian Centre, 1334A High Street
- › St Michael's School, Cooper Street
- › Taita Central School, 33 Churton Crescent, Taita
- › Pomare School, 4 Partridge Street, Taita
- › Taita College, 188 Eastern Hutt Road, Taita
- › Avalon Intermediate, 1041 High Street, Avalon
- › Pomare Union Health, 51 Farmer Crescent, Pomare
- › Naku Enei Tamariki, 25 Peterkin Street, Taita
- › Taita Community Patrol
- › Learning Connexion, 182 Eastern Hutt Rd, Taita
- › Netball Hutt Valley, 28 Taine Street, Taita
- › Te Whare Koha, Farmer Crescent, Pomare
- › Taita Community Noticeboard Facebook page

Engage proactively

Community Response Planning

Identify local assets

Apply them to address local challenges:

- Food and water
- Shelter
- Medical assistance
- Checking on people and damage

Where are the nearest medical providers?

- › Pomare Union Health, 51 Farmer Cres, Pomare
- › Taita GP, 1205 High Street, Taita
- › Avalon Medical Centre, 840 High Street, Avalon

Where else could we provide medical assistance if the above facilities are not available?

- › Taita Pharmacy, 1206 High St, Taita, Lower Hutt 5011
- › Aroha Care Centre, 6 Cooper St, Taita
- › Pomare Community House
- › Great Start Taita
- › Walter Nash

Who can help provide medical assistance?

- › Doctors and Nurses in the community
- › Vets and vet nurses
- › Teachers
- › People with First Aid certificates
- › Life Guards
- › Surf life savers

How do we get people to medical assistance or medical assistance to people?

- › The Learning Connexion Bus
- › St Matthews van
- › Aroha Care Centre van
- › Taita College van
- › Naku Enei Tamariki cars

Wainuiomata Community Response Plan September 2012

Developed by
The Wainuiomata Community Board
Key Stakeholders from Wainuiomata
Wellington Region Emergency Management



Wainuiomata Community Response Plan

September 2014
Version 2.0 (Final Review)
For further enquiries, contact:
The Wainuiomata Community Board
Tara.Mahoney@wainuiomata.govt.nz
Or
Mircha Hill, Emergency Management Advisor, Hutt Valley
Wellington Region Emergency Management Office
Mircha.Hill@erdc.govt.nz

IT'S EASY
Helping our community during a disaster

A guide to operating
Papakowhai Civil Defence Centre

STOP!
Ensure the buildings are safe before proceeding

- Walk around the outside of the building to check for any signs of damage.
- If you see serious cracks, check around and report them.
- If you see anything that may indicate significant structural damage to the building, or any other potential source of harm, leave immediately and do not enter.
- Do not enter the building until it is safe.
- If the site is not safe to use find an alternative location for the Civil Defence Centre. This could be a neighbouring school, community hall, or any other place that you can use to provide support for the centre and all the Emergency Operations Centre services.

This Centre is based in a school, the school's responsibility to its students is a priority, please abide by school staff's instructions and request.

This guide is customised for this particular Civil Defence Centre, it has local information and maps. It is designed to be pulled apart to use as guides to various sections of the Civil Defence Centre.

PUBLISHED AUGUST 2017

Wainuiomata (Wellington Road) Community Emergency Hub Guide

This Hub is a place for the community to coordinate your efforts to help each other during and after a disaster.

Objectives of the Community Emergency Hub are to:

- Provide information to that your community knows how to help each other and stay safe.
- Understand what is happening.
- Solve problems using what your community has available.
- Provide a safe gathering place for members of the community to support one another.

Focus on end users

Be collaborative





Be hospitable



Encourage ownership



- Community leadership
- Testing and evaluation
- Partnership between official and community-led response

An aerial photograph of Auckland, New Zealand, taken from a high vantage point on a hill. The city's skyline is visible, with numerous high-rise buildings clustered in the central business district. The harbor is filled with water, reflecting the sky, and several boats are visible. In the foreground, there are green, tree-covered hills. A semi-transparent dark grey rectangular box is overlaid on the middle of the image, containing white text.

www.getprepared.nz/hubs

ainslie.ryder@wremo.nz