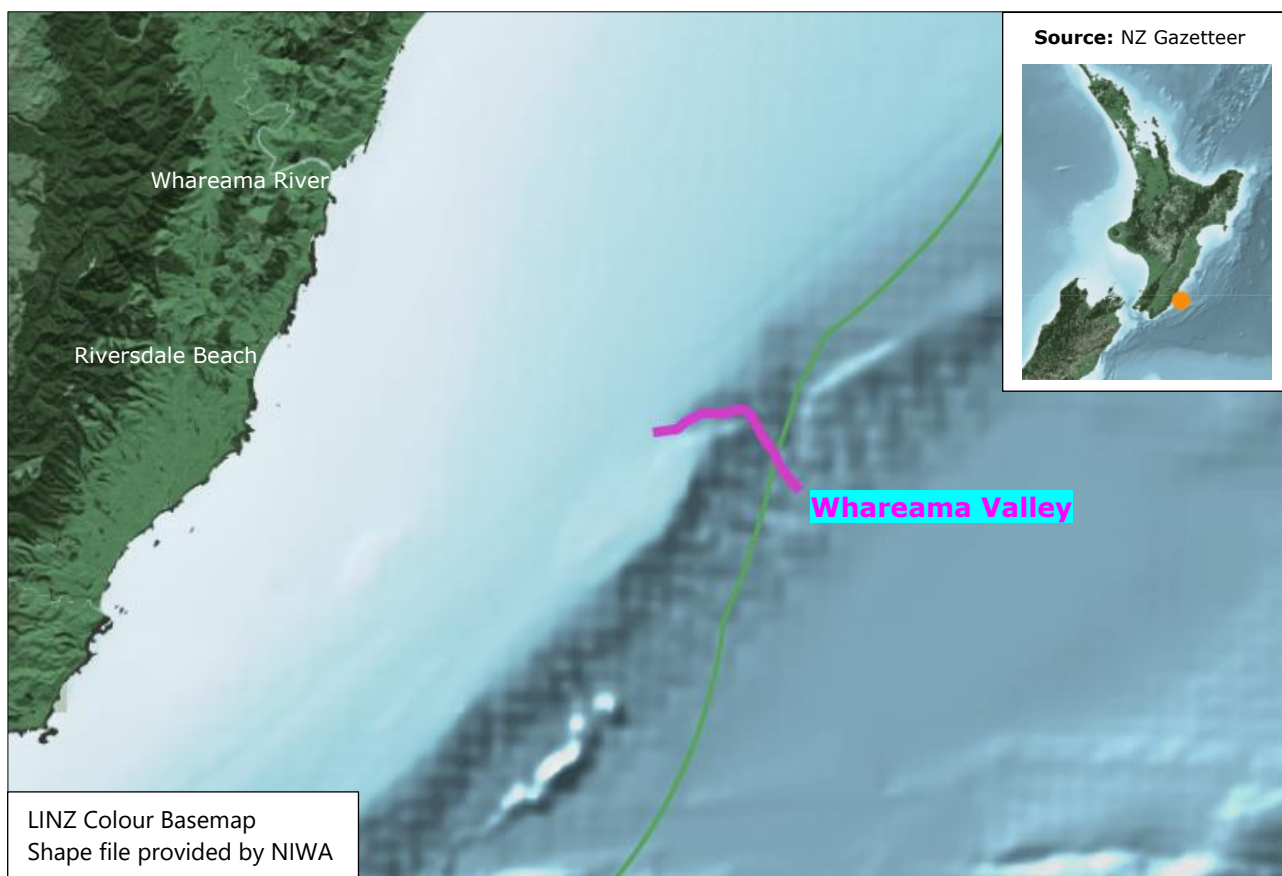


# Proposal considered by the NZGB on 2 April 2020 for: Whareama Valley [altered from Whareama Sea Valleys]



**Summary** Whareama Sea Valleys was initially included in the 2019 project to approve recorded Wellington Region place names as official. However, when confirming the feature's correct position NIWA advised that it is more appropriately a single valley, not a series of small valleys.

At its meeting on 3 February 2020 the UFNC<sup>1</sup> noted that although the feature had previously been described as a series of sea valleys, the small gullies extend for hundreds of miles, so it is very difficult to determine where each gully begins and ends. On that basis the UFNC agreed that the feature be accepted as one valley.

The UFNC agreed that the generic term should be altered from 'Sea Valleys' to 'Valley' to align with the NZGB's [Standard for undersea feature names](#) and GEBCO<sup>2</sup>'s [B-6 Guidelines](#).

A Te Taura Whiri i te Reo Māori licenced translator has confirmed that Whareama is the correct orthography<sup>3</sup>.

No proposal will be made to SCUFN<sup>4</sup> as the feature is less than 50% beyond New Zealand's 12NM territorial sea.

<sup>1</sup> Undersea Feature Names Committee

<sup>2</sup> General Bathymetric Chart of the Oceans

<sup>3</sup> The conventions and rules of how to write a language

<sup>4</sup> Sub-Committee on Undersea Feature Names

## UFNC's recommendation to the NZGB

At its meeting on 2 April 2020 the NZGB resolved this recommendation

---

That the NZGB **accepts** a proposal to **alter** the recorded (unofficial) undersea feature name Whareama Sea Valleys to an official undersea feature name

**Whareama Valley** based on:

- the feature being a single large sea valley on the western flank of Urutī Basin,
- evidence of the feature recorded on charts as a single sea valley,
- 'Whareama' being the correct orthography, and
- the generic term 'Valley' conforming with the NZGB's [Standard for undersea feature names](#) and GEBCO's [B-6 Guidelines](#).

**and**

If the NZGB accepts Whareama Valley that it be **notified** as a proposal to alter for one month.

---

## Supporting information

1. UFNC report to alter Whareama Sea Valleys – 2020-02-03