

Crown Pastoral Land Tenure Review

Lease name : DEEP CREEK

Lease number : Po 036

Substantive Proposal Designations Plan

A Designations Plan forms part of the Tenure Review Substantive Proposal. The attached plan is a copy of the Designations Plan included in the Substantive Proposal for the above review. The Substantive Proposal has been accepted by the Leaseholder.

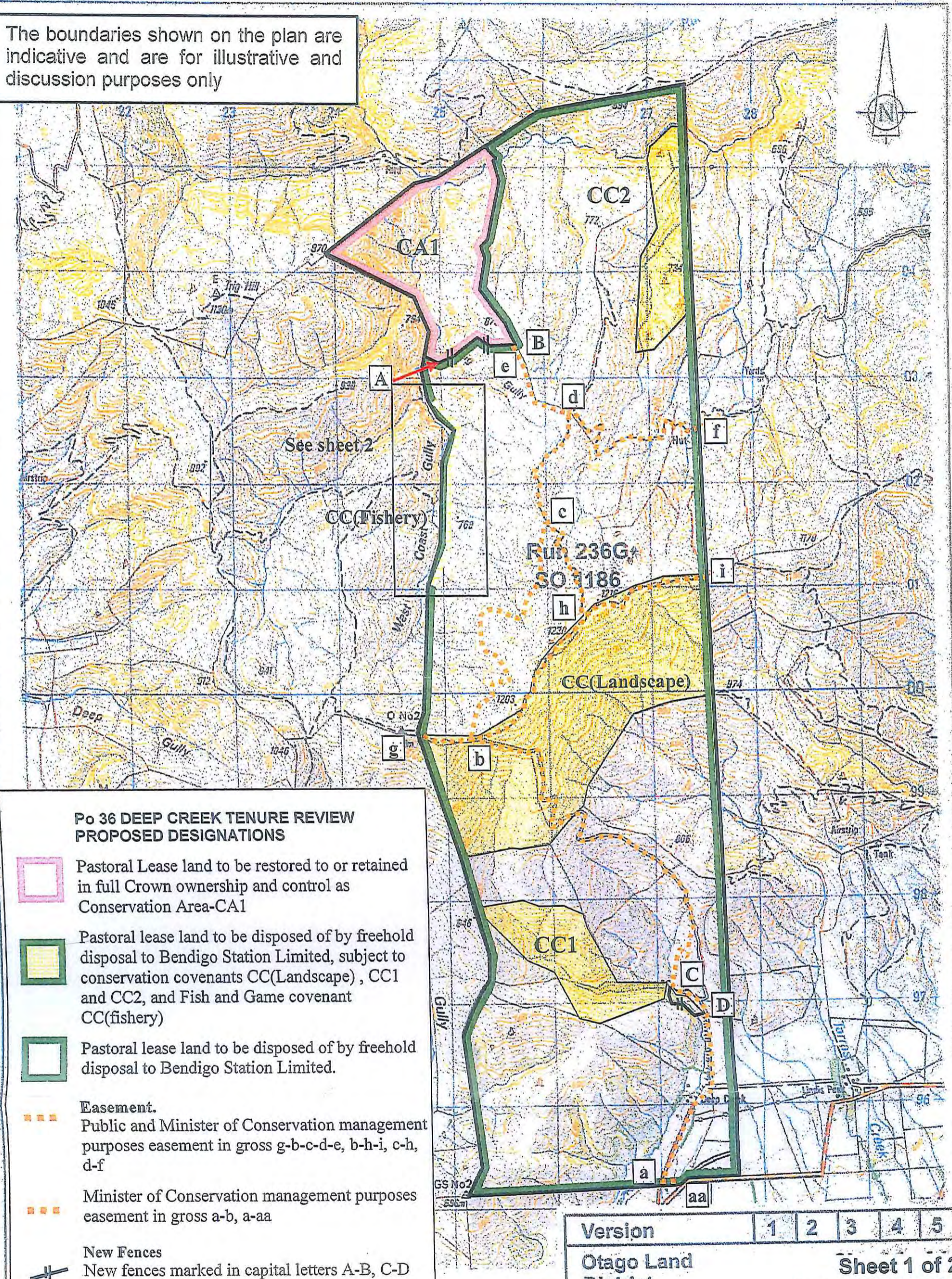
A summary of the Substantive Proposal is available as part of a notice of acceptance document lodged for registration against the Landonline computer register of the leasehold Certificate of Title being OT338/67. The Notice of Acceptance is a public document searchable by licensed remote access to Landonline.

The report attached is released under the Official Information Act 1982.

July

13

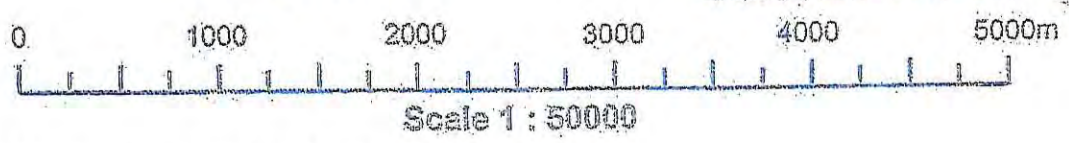
The boundaries shown on the plan are indicative and are for illustrative and discussion purposes only



- Po 36 DEEP CREEK TENURE REVIEW PROPOSED DESIGNATIONS**
- Pastoral Lease land to be restored to or retained in full Crown ownership and control as Conservation Area-CA1
 - Pastoral lease land to be disposed of by freehold disposal to Bendigo Station Limited, subject to conservation covenants CC(Landscape), CC1 and CC2, and Fish and Game covenant CC(fishery)
 - Pastoral lease land to be disposed of by freehold disposal to Bendigo Station Limited.
 - Easement. Public and Minister of Conservation management purposes easement in gross g-b-c-d-e, b-h-i, c-h, d-f
 - Minister of Conservation management purposes easement in gross a-b, a-aa
 - New Fences
 - New fences marked in capital letters A-B, C-D

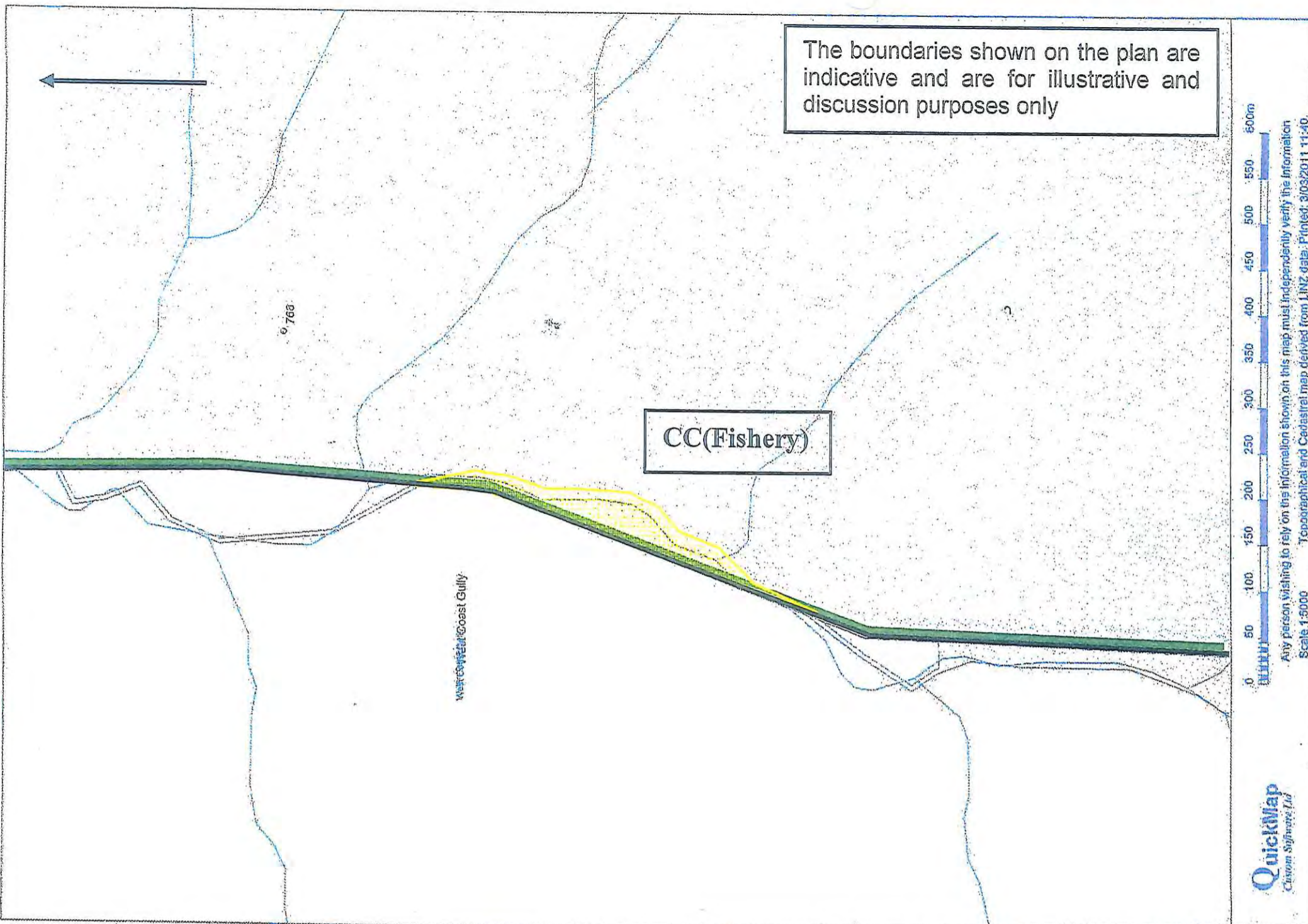
Version	1	2	3	4	5
Otago Land District	Sheet 1 of 2				
NZMS 260 G.40	Date: 02/02/2011				

Certified a true copy of the original status check plan.



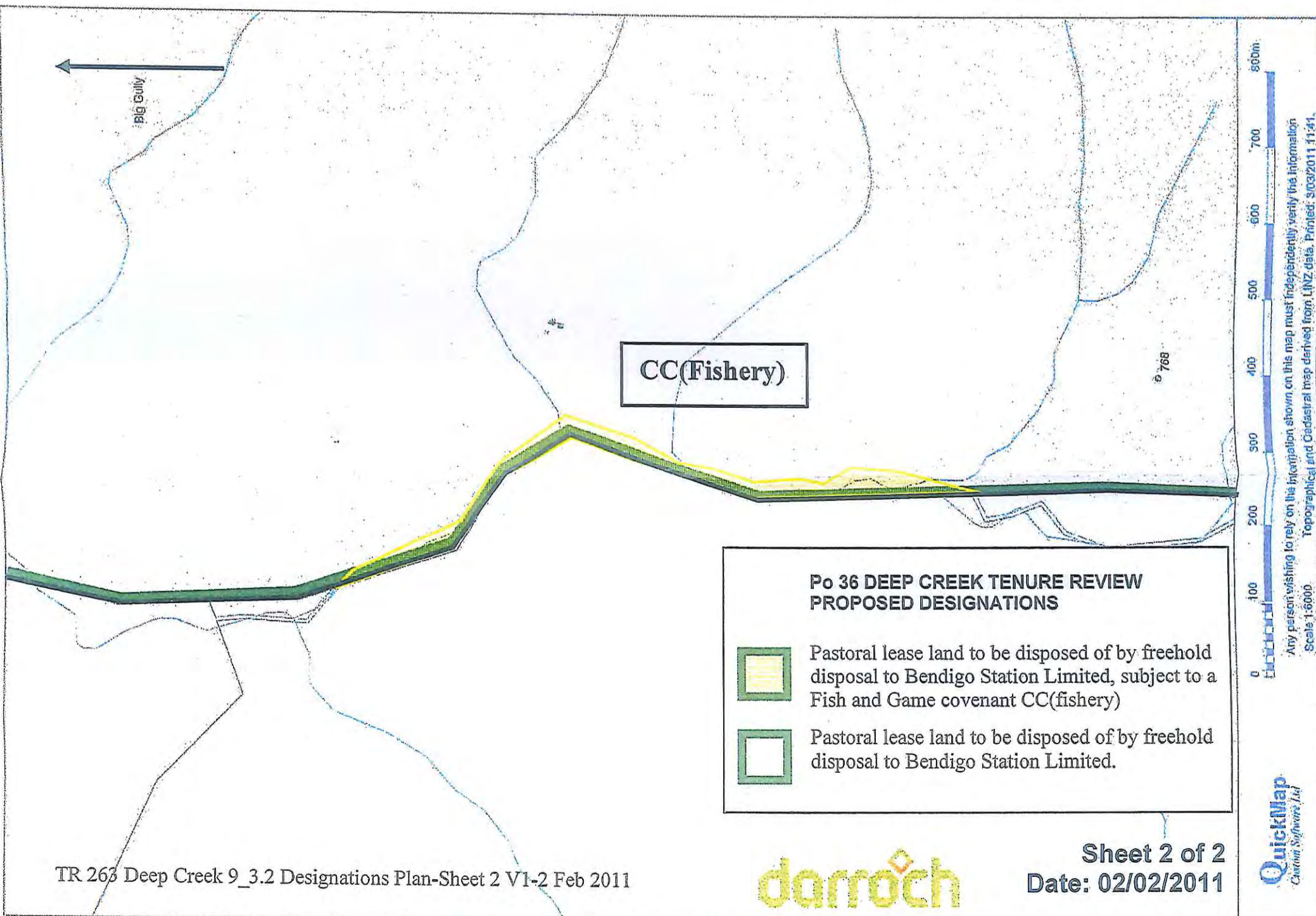
Graphics by:
TL Survey Services Ltd
DUNEDIN



The boundaries shown on the plan are indicative and are for illustrative and discussion purposes only



QuickMap
Custom Software Ltd

Any person wishing to rely on the information shown on this map must independently verify the information
Scale 1:6000 Topographical and Cadastral map derived from LINZ data. Printed: 3/03/2011 11:40.



- Po 36 DEEP CREEK TENURE REVIEW PROPOSED DESIGNATIONS**
-  Pastoral lease land to be disposed of by freehold disposal to Bendigo Station Limited, subject to a Fish and Game covenant CC(fishery)
 -  Pastoral lease land to be disposed of by freehold disposal to Bendigo Station Limited.

QuickMap
Custom Software Ltd

Any person wishing to rely on the information shown on this map must independently verify the information
Scale 1:6000 Topographical and Cadastral map derived from LINZ data. Printed: 3/03/2011 11:41.