

Crown Pastoral Land Tenure Review

Lease name : LONGLANDS

Lease number : PO 260

Preliminary Proposal Designations Plan

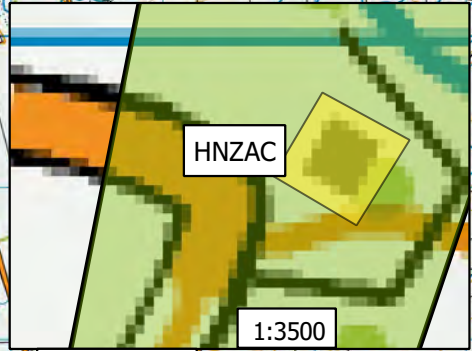
The attached plan is a copy of the Designations Plan included in the Preliminary Proposal for the above review.

The report attached is released under the Official Information Act 1982.

March

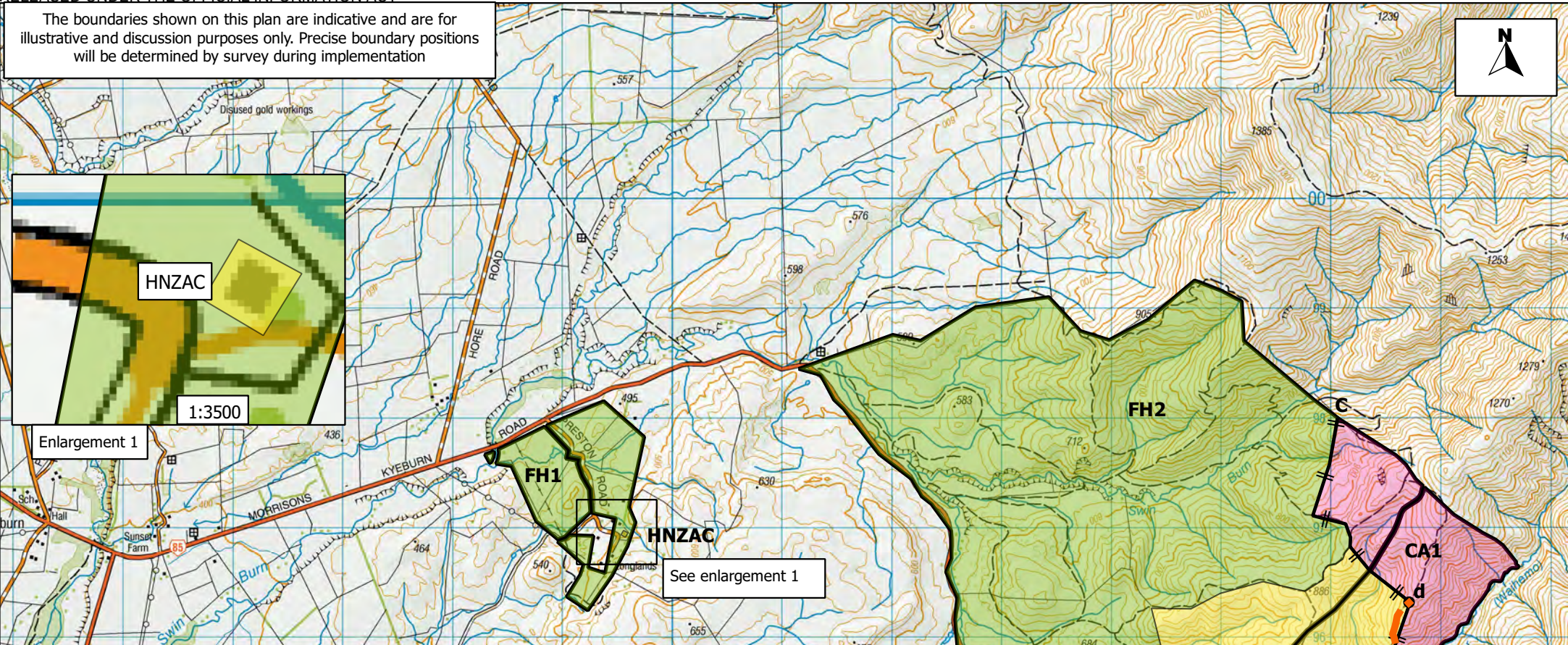
15

The boundaries shown on this plan are indicative and are for illustrative and discussion purposes only. Precise boundary positions will be determined by survey during implementation



Enlargement 1

1:3500



Po260 Longlands Proposed Designations Plan

Longlands Designations

- Pastoral lease land to be restored or retained in full Crown ownership as Conservation land- CA1, CA2
- Pastoral lease land to be disposed of by freehold disposal to Longlands Station Ltd- FH1, FH2
- Pastoral lease land to be disposed of subject to Conservation covenants- CC1
- Pastoral lease land to be disposed of subject to Heritage New Zealand Covenant-(HNZAC)

Longlands access easements

- Public and conservation management easement a-b-c-d
- Conservation management easement b-c

New Fencelines

- Proposed new boundary and covenant fencelines A-B, C-D

TR Longlands Designations Plan
Version 4: 4 November 2014. Lease boundary data sourced from LINZ Data Service. The plan is certified as a true version of the latest LINZ Status Plan

1:50000

