

MĀORI INTEREST IN SURPLUS CROWN-OWN LAND

Notice is hereby given that the properties owned by the Crown and its agencies described in the Schedule below have been declared surplus by the Crown.

This schedule is published in order to operate the Protection Mechanism and the Sites of Significance process established by the Government to protect specific Māori interests in surplus Crown-owned land. Iwi/hapu representatives are invited to inform The Office for Māori Crown Relations – Te Arawhiti of specific interests they have in these properties, in accordance with the criteria set out on the forms for Landbanking and the Protection of Sites of Significance. Local Iwi representatives known to The Office for Māori Crown Relations – Te Arawhiti are being notified directly.

Submissions must be accompanied by the correct forms which can be obtained from the Settlement Advisor-Protection Mechanism at The Office for Māori Crown Relations – Te Arawhiti or at www.lin.govt.nz (search: protection mechanism or landbank). Forms for the Protection of Sites of Significance can also be obtained from the local office of Te Puni Kōkiri. Applications for both processes must be lodged with the Settlement Advisor- Protection Mechanism at The Office for Māori Crown Relations – Te Arawhiti by **4.00 pm on Friday, 8 September 2023**.

Properties for which no submission has been received by this date may be disposed of.

Contact:

Denis McCord Ph (04) 494 9835 or denis.mccord@tearawhiti.govt.nz
The Office for Māori Crown Relations – Te Arawhiti, Justice Centre
19 Aitken Street, Wellington 6011, (SX10111), Wellington
Reception: ph (04) 494 9800, Website: www.tearawhiti.govt.nz

SCHEDULE

NORTH AUCKLAND LAND DISTRICT

- AK*101645** 814 m² Part 17 Block VI Omapere Survey District held in Record of Title NA93C/87 Residential section with dwelling which has been used for local health board offices and meeting room. Requires maintenance work. Settlers Way, Okaihau
- AK*101646** 728 m² Lot 1 DP 50900 held in Record of Title NA93D/43 excluding coal and minerals remaining in Record of Title NA323/199. Section with dwelling used for local health board office. Requires maintenance repairs. George Street, Hikurangi
- AK*101647** 878 m² Lot 3 DP 55004 held in Record of Title NA111B/79. Residential section with dwelling. Marsden Point Road, Ruakaka

WELLINGTON LAND DISTRICT

- WN*101648** 426 m² Section 1 SO 36345 comprised in Record of Title WN38D/364 Former Department of Conservation Mangaweka Field Base and originally the Mangaweka Post Office site. Kawakawa Street, Mangaweka.
- WN*101649** 7658 m² Section 21 SO 505430 held in Record of Title 1060812 subject to a reverse sensitivity covenant. Vacant land with no frontage to a legal road (landlocked). The property adjoins residential properties fronting Quadrant Heights, Paraparaumu.
- WN*101650** 8378 m² Sections 22 & 23 SO 505430 held in Record of Titles 1082469 & 1084656, subject to a reverse sensitivity covenant, & subject to planting covenant, and easement for a relocatable right of way and an easement for stormwater drainage. Vacant irregular shaped land with no frontage to a legal road (landlocked). The property adjoins residential properties fronting Kiwi Road, Raumati.

DP 34311

DF
0

AK 101645

Lot 2
DP 34311
0.1012

Lot 1
DP 34311
0.1012

Pt Section 17
Blk VI Omapere SD
0.0814

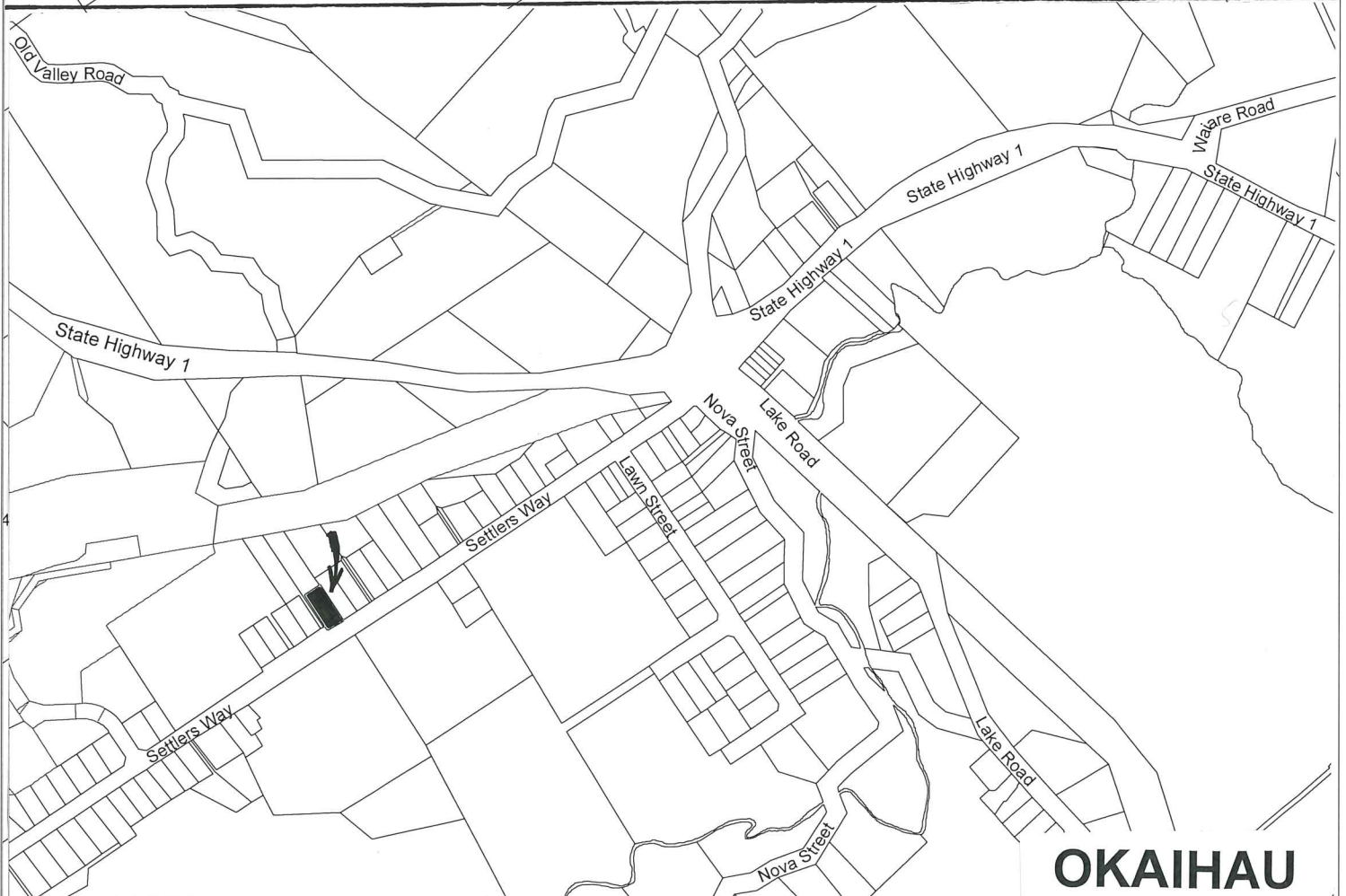
Lot 1
DP 46885
0.0814

Lot 2
DP 46885
0.0814

Lot 3
DP 46885
0.0814

Lot 4
DP 46885
0.0814

Settlers Way



OKAIHAU

QuickMap
Custom Software Ltd



Scale 1:750

Topographical and Cadastral map derived from LINZ data.

AK 101646

Lot 5
Deed 311
0.0889

Lot 3
Deed W 39
0.1189

Lot 3
DP 50900
0.1303

Lot 1
DP 50900
0.0728

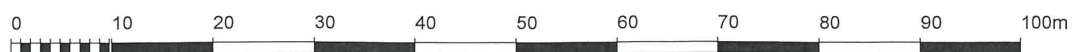
Lot 2
DP 50900
0.0817

George Street
Factory Lane



HIKURANGI

QuickMap
Custom Software Ltd



Scale 1:750

Topographical and Cadastral map derived from LINZ data.

AK 101647

Marsden Point Road

Lot 2
DP 55004
0.0878

Lot 3
DP 55004
0.0878

Lot 1
DP 55004
0.2828

Lot 5
DP 55004
0.0878

Lot 4
DP 55004
0.2921



RUAKAKA

Town of Mangaweka
0.1012

WN 101648

Section
Town of Mar
0.101

Section 24
Town of Mangaweka
0.1012

Broadway
Kawakawa Street

Section 1
SO 36345
0.0426

Section 1
SO 33971
0.0585

Section 19
Town of Mangaweka
0.1012

Section 17
Town of Mangaweka
0.1012

Section 15
Town of Mangaweka
0.1012

Pt Section 22
Town of Mangaweka
0.0784

Pt Section 20
Town of Mangaweka
0.0684

Section 13

Reservoir Road

Reservoir Road

Kakariki Street

Weka Street

State Highway 1
Ruhine Road

Raumaewa Road

State Highway 1

State Highway 1

State Highway 1

Koragenui Street

Raumaewa Road

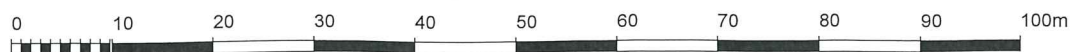
Te Kapua Road

Te Kapua Road

State Highway 1

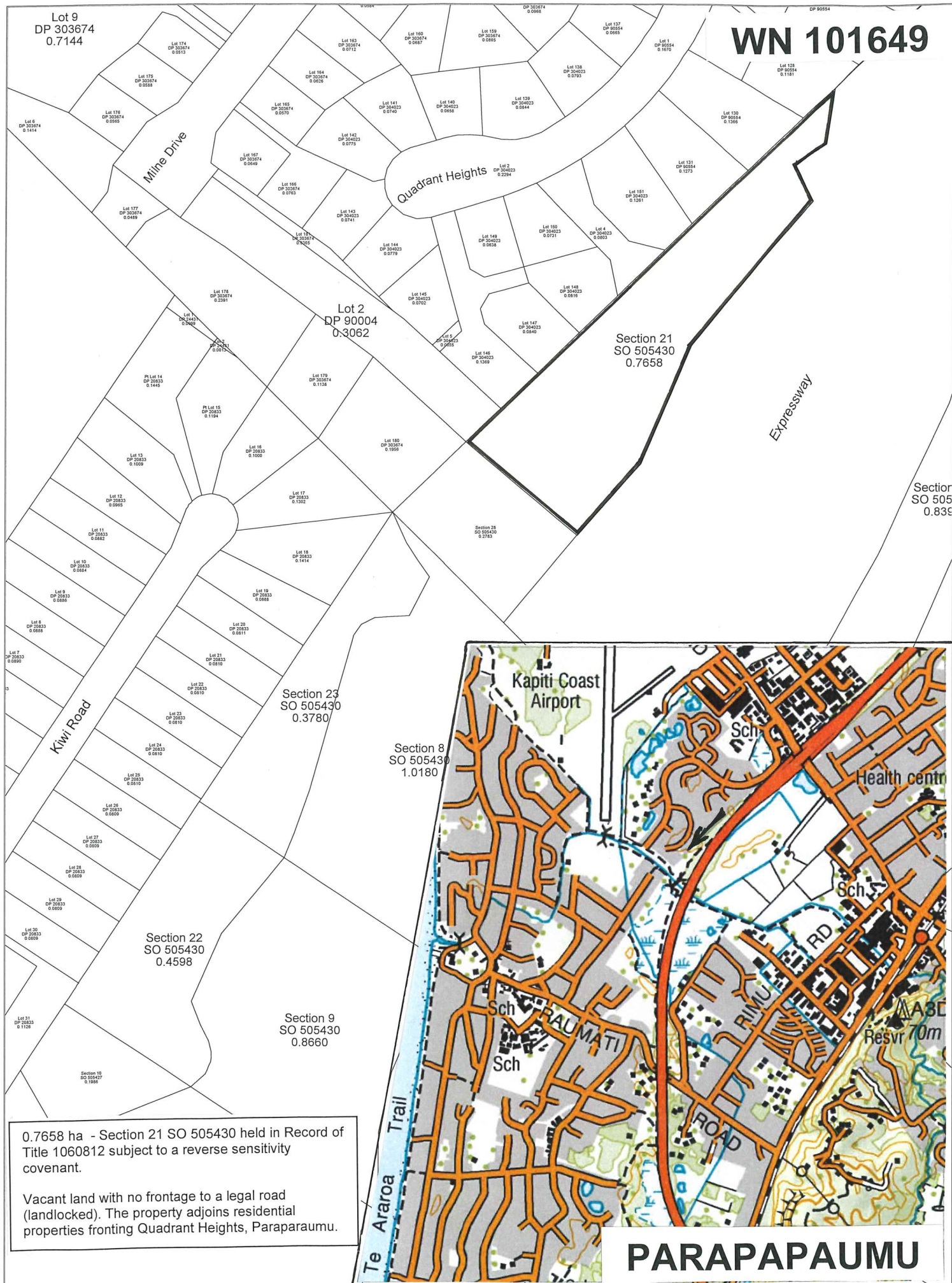
MANGAWEKA

QuickMap
Custom Software Ltd



Scale 1:750

Topographical and Cadastral map derived from LINZ data.



0.7658 ha - Section 21 SO 505430 held in Record of Title 1060812 subject to a reverse sensitivity covenant.

Vacant land with no frontage to a legal road (landlocked). The property adjoins residential properties fronting Quadrant Heights, Parapapaumu.

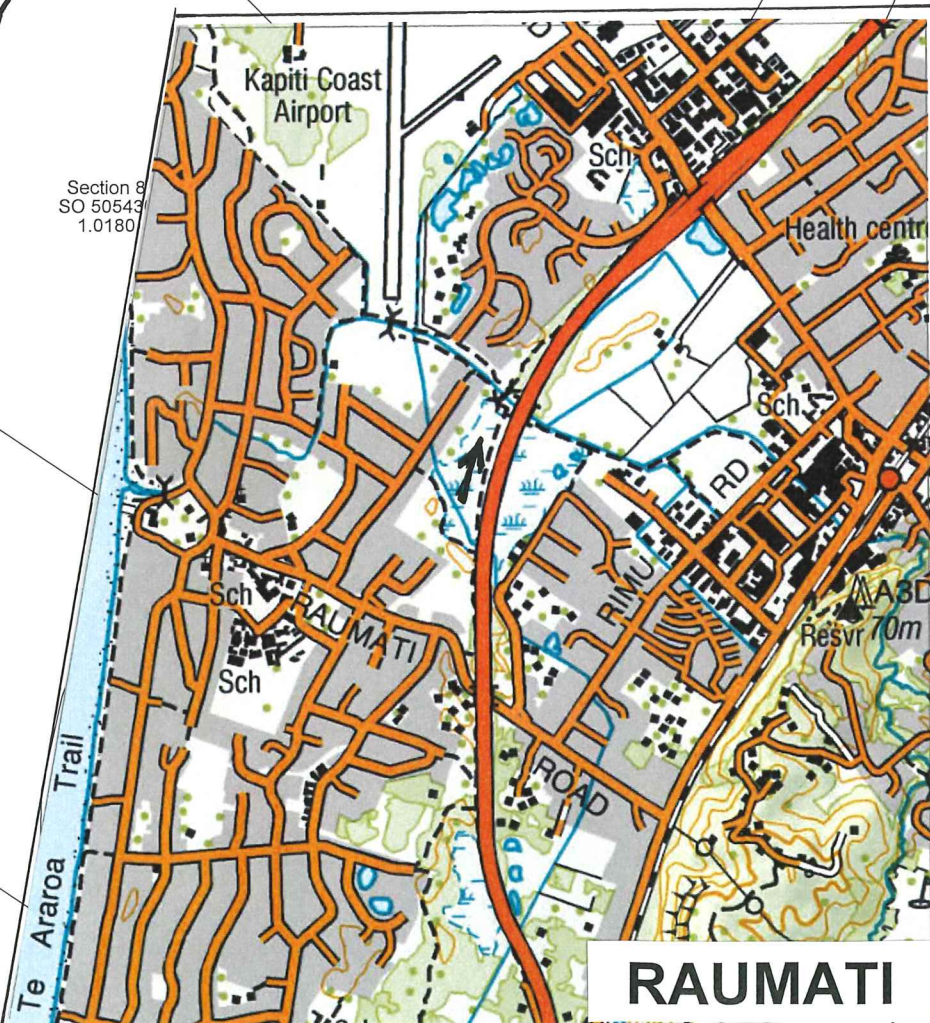
Lot 9
DP 303674
0.7144

WN 101650



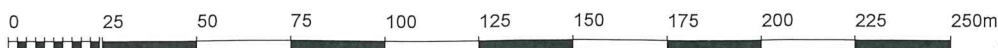
0.8378 ha - Sections 22 & 23 SO 505430 held in Record of Titles 1082469 & 1084656, subject to a reverse sensitivity covenant, & subject to planting covenant, and easement for a relocatable right of way and an easement for stormwater drainage.

Vacant irregular shaped land with no frontage to a legal road (landlocked). The property adjoins residential properties fronting Kiwi Road.



RAUMATI

QuickMap
Custom Software Ltd



Scale 1:2000

Topographical and Cadastral map derived from LINZ data.