



**Land Information
New Zealand**
Toitū te whenua

Crown Pastoral Land Tenure Review

Lease name : SHAG VALLEY

Lease number : PO 331

Preliminary Proposal Designations Plan

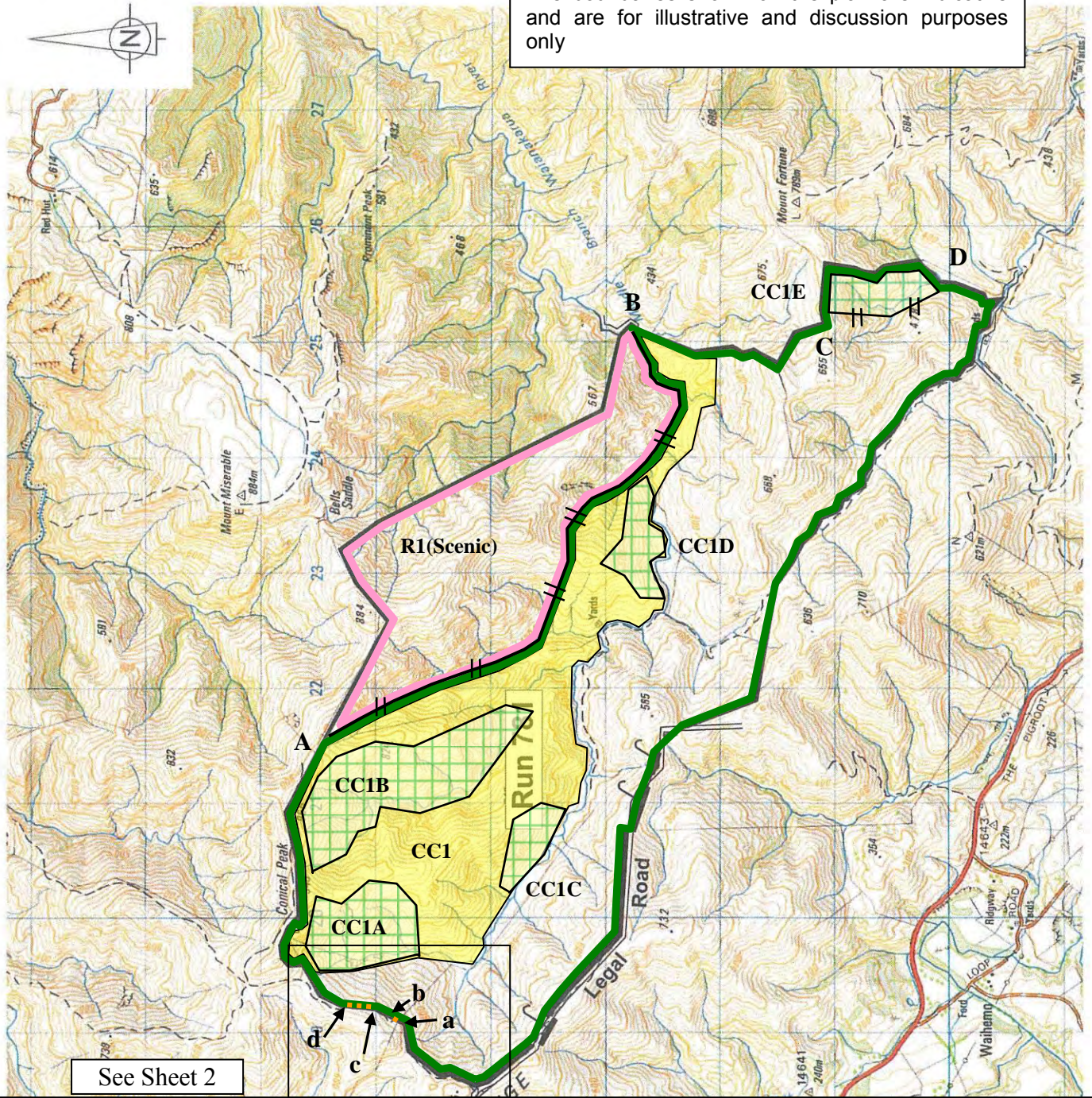
The attached plan is a copy of the Designations Plan included in the Preliminary Proposal for the above review.

The report attached is released under the Official Information Act 1982.





November

12



The boundaries shown on the plan are indicative and are for illustrative and discussion purposes only



Po 331 SHAG VALLEY TENURE REVIEW PROPOSED DESIGNATION

-  Pastoral lease land to be restored to or retained in full Crown ownership and control as Reserve land R1(Scenic)
-  Pastoral lease land to be disposed of by freehold disposal to Jonathan Dillon Bell, Tanya Elms Bell and H.G.W. Trustees Limited (51/200 share) Alfred Dillon Bell, Jonathan Dillon Bell and Trustees Executors Limited (149/200 Share)
-  Pastoral lease land to be disposed of by freehold disposal to Jonathan Dillon Bell, Tanya Elms Bell and H.G.W. Trustees Limited (51/200 share) Alfred Dillon Bell, Jonathan Dillon Bell and Trustees Executors Limited (149/200 Share), subject to a conservation covenant CC1 and CC1A-E
- 

Easements

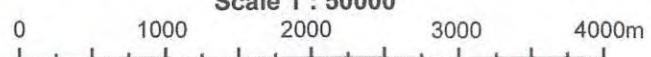
-  Public and Minister of Conservation Management Access easement in gross a-b, c-d
-  New fence line marked A-B, C-D

TR220 Shag Valley 8_5.1.5 Designations Plan V1-16 Feb 2011

Version	1	2	3	4	5
Otago Land District	Sheet 1 of 2				
NZMS 260 1.42	Date: 12/02/2002				



Shag Valley Station
Scale 1 : 50000



Graphics by :
TL Survey Services Ltd DUNEDIN

Po 331 SHAG VALLEY TENURE REVIEW PROPOSED DESIGNATION



Pastoral lease land to be disposed of by freehold disposal to Jonathan Dillon Bell, Tanya Elms Bell and H.G.W. Trustees Limited (51/200 share) Alfred Dillon Bell, Jonathan Dillon Bell and Tower Trust Limited (149/200 Share)



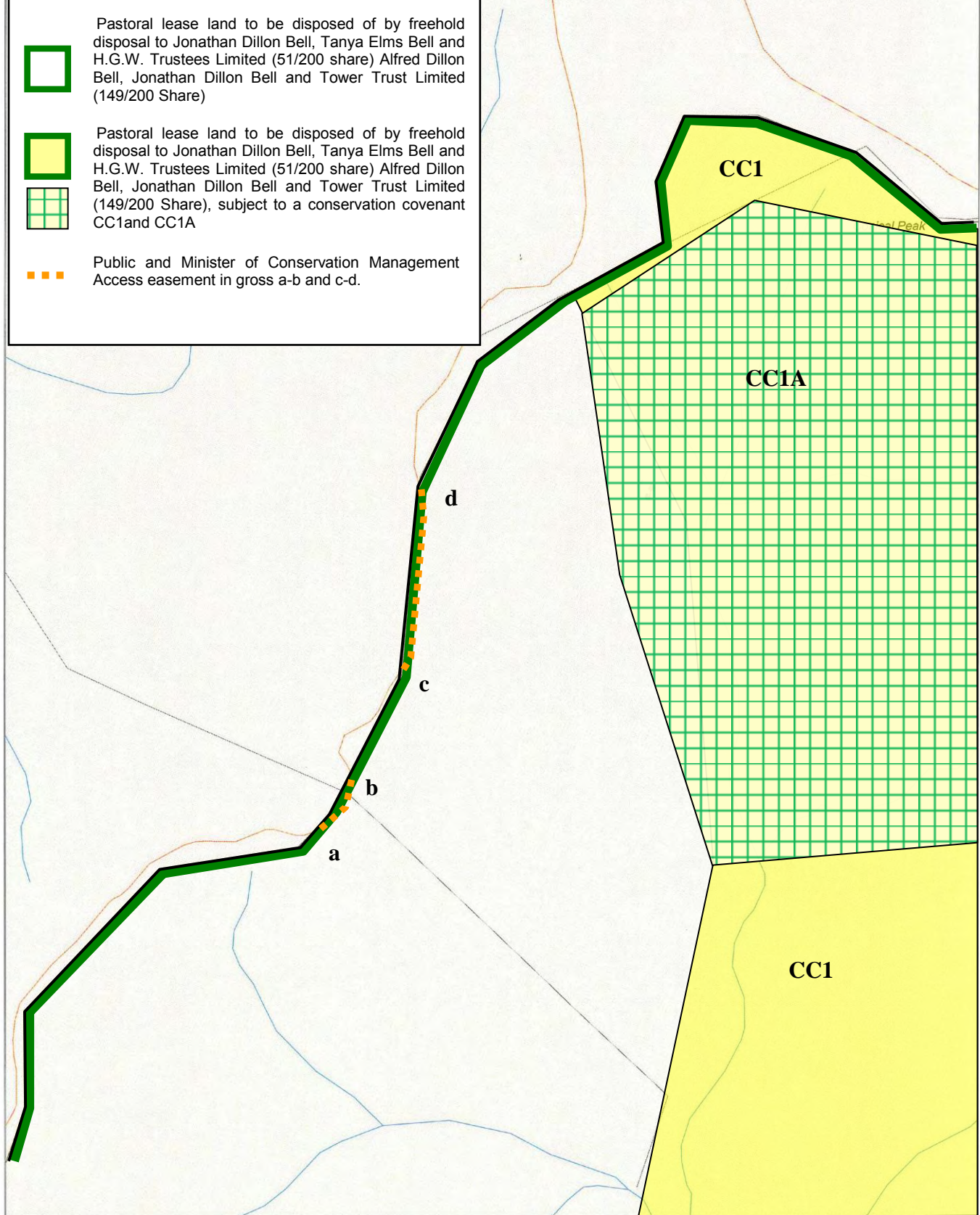
Pastoral lease land to be disposed of by freehold disposal to Jonathan Dillon Bell, Tanya Elms Bell and H.G.W. Trustees Limited (51/200 share) Alfred Dillon Bell, Jonathan Dillon Bell and Tower Trust Limited (149/200 Share), subject to a conservation covenant CC1 and CC1A



Public and Minister of Conservation Management Access easement in gross a-b and c-d.



The boundaries shown on the plan are indicative and are for illustrative and discussion purposes only



Shag Valley Station

Sheet 2 of 2