

Crown Pastoral Land Tenure Review

Lease name: AWAKINO

Lease number: Oo 098

Public Submissions - Part 1

These submissions were received as a result of the public advertising of the Preliminary Proposal for Tenure Review.

December

10



New Zealand Deerstalkers' Association Incorporated

Level 1 45 – 51 Rugby Street P O Box 6514 Wellington

Phone: 04 801 7367 Fax: 04 801 7368

Email: deerstalkers.org.nz

Website: <http://www.deerstalkers.org.nz>

30 November 2008

The Manager
DTZ
Box 27 Alexandra
alexandra@dtz.co.nz

DTZ ALEXANDRA

3 - DEC 2008

RECEIVED

NZ Deerstalkers' Association Submission: Awakino expired POL

Greetings. **New Zealand Deerstalkers' Association Incorporated (NZDA)** is the national body of recreational deerstalkers and other big game hunters. We have 50 branches and hunting member clubs throughout New Zealand. We have 7500 members, and have been actively advocating for recreational deerstalking and hunting, running hunter training courses, trips, conferences etc since 1937. We maintain ethical standards for hunting.

1 Summary: This 800 Ha area was formerly a pastoral occupation licence (POL), a licence to graze with no right of renewal, and no rights to exclude the public. It has now expired. So it is being dealt with as unoccupied Crown land, under Part 3 of the Crown Pastoral Lands Act 1998. ie it is unencumbered by any lease or licence, or commitment to a past licensee.

The former POL was surrendered from the original pastoral lease in 1988, paving the way for the rest of the pastoral lease to be free-held. Consequently, it has already come through a negotiated tenure review process.

It has valuable landscape, recreational hunting, amenity and open space values, evident in the photo of the Tin Hut and associated wilding pines. NZDA supports it becoming a Conservation Area, and being added to the adjacent Hawkdun Conservation Park.

2 Area is appropriate for adding to the Hawkdun Conservation Park:

The area is backed in the west and south by public conservation land that is part of the Hawkdun-Oteake proposed Conservation Park. As seen from the photo, it is attractive tussock, fell-field and open mountainland, in a relatively natural state, and primarily of Class VII (404 Ha – severe limitations for pastoral lease) and VIII (342 Ha – generally unsuited for pastoral use). It has already been surrendered from a former pastoral lease as part of a freeholding deal. The low level of grazing allowed (400 SU on an annual basis, and not always used) highlights the limited nature of any grazing.

Consequently, the land is not capable of ecologically sustainable pastoral use, and should not be freeholded (S 24 (a) Crown Pastoral Lands Act). It is better added to the public conservation estate for its recreational and scenic qualities. It already has some recreational hunting attributes, and would also be valued for tramping use, and for access to the St Mary Range behind.

3 Public Access and huts: Though access is possible from the adjacent Public Conservation Land, there is a need for public access directly from Kurow and the Waitaki Valley. Gaining such access is highly desirable, as it would open up the north side of the Hawkdun Conservation Park to users from the Waitaki Valley, and Canterbury generally. It should have been negotiated at the

time of the surrender of the POL from the former lease. But this does not appear to have happened.

Public access for recreational hunters with made-safe firearms is needed, preferably along with public 4WD access. 4WD access makes it more attractive for big game hunters, because it is then easier to take out meat harvested for the table. This would also encourage hunters into the Hawkdun Conservation Park.

The Tin Hut on the land should be kept for recreational use. It is similar to many shelter huts on former pastoral lease land.

4 Future addition to the Hawkdun-Oteake proposed Conservation Park:

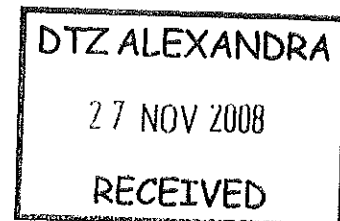
NZDA supports this land becoming part of the Oteake-Hawkdun Conservation Park, where its primary purpose will be for facilitating recreational enjoyment and use.

Thank you for the opportunity to make this submission. NZDA strongly supports the Commissioner's proposal.

Yours truly

Hugh Barr
National Advocate

10 Smacks Close
Papanui
Christchurch.8051



Re: Awakino Station

Dear Sir,

I agree with the proposal to retain "Awakino" in full Crown ownership and control as a conservation area.

However there are two areas of concern.

1. The grazing of the property.
2. The wildlings spread.

I've stated that I agree with the designation as a conservation area. So I mean the protection of the soil and flora and fauna. This proposal mentions several times the poor state of these assets. Therefore I disagree with the continual grazing. The statement that 1700 wethers equates to 400 on an annual basis is misleading at best. If a property can only be grazed at certain times of the year due to grass growth, then the resultant grazing is still 1700 su per year. It is possible that this is intensive grazing, especially if the land is not improving. Any class 7 and 8 land shouldn't be grazed, which is basically this entire property.

The wildlings spread is also a concern. The farmers should be made to remove all the wildlings and the existing trees around the hut.

If I go tramping I'm expected to carry gas for heating food etc. I'm not to rely on fires. The days of needing firewood (the pines) is no longer necessary, so the pines should be removed before they become a further problem.

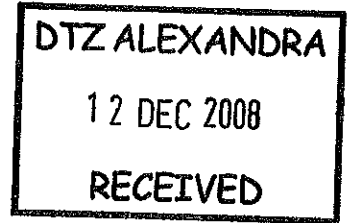
I fail to see why land left ungrazed is looked on as a waste. The land will be providing quality water for downstream users.

Regards
Geoff Clark.

Public Access New Zealand

Incorporated

Secretary, Public Access New Zealand Inc., P. O. Box 17, Dunedin, Otago New Zealand.
phone/fax 64-03-489 8284



The Commissioner of Crown Lands,
C/o DTZ,
PO..Box 27,
Alexandra.

Dear Sir

9th December 2008

Refers Preliminary Proposal –Review of other Crown Land -Awakino Station Ltd.,

Thank you for your advice on this.

Public Access New Zealand Inc,(PANZ) is a Charitable Trust formed in 1992 .

PANZ objects are the preservation and improvement of public access to public lands, waters, and the countryside, through the retention in public ownership and control of resources of value for recreation.

We understand the area involved was formally subject to a pastoral occupation licence with no right of renewal and is subsequently unencumbered by lease or licence .

Public Access New Zealand Inc, are pleased to advise that we support the area becoming part of the Conservation Estate and being added to the adjacent Hawkdun Conservation Park.

We would wish to indicate however that we have concerns at the absence of any public access ways through this property and we would ask you to give this matter some further consideration.

We note the only access to the area at present is via a public road on an adjacent property with no access to the interior of the Awakino property .

This area has significant tramping potential and is of considerable value as a recreational hunting area for deer and pig. As such it can provide not only an opportunity for recreational hunting, an excellent outdoor exercise activity in itself, but the food gathering potential of the activity is becoming an increasingly important consideration for New Zealanders.

To aid the recovery of game animals, and from a safety point of view it would be desirable to have 4 wheel drive access to the interior of this property and we would ask that you give this matter further consideration.

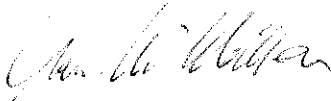
Particularly there is a need for public access of this type directly from the Kurow area specifically and Waitaki Valley generally.

We do support the inclusion of this land in the proposed Conservation Park but believe some considerable effort should be applied to providing adequate public 4 wheel drive access to the interior.

Thank you for this opportunity to make a submission on the matter

Yours sincerely,

Alan McMillan,
Chairman,
Board of Trustees,
Public Access New Zealand Inc.,
P.O.Box 17,
Dunedin
Ph/fax 03 489 82 84
club.wingatui@xtra.co.nz

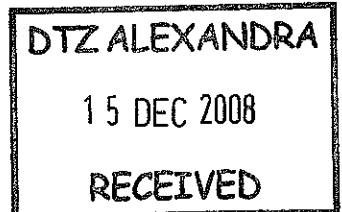


Council of Outdoor Recreation Associations of New Zealand Inc

P O Box 1876 Wellington
Tel&Fax +64 4 934 2244
hugh@infosmart.co.nz

15 December 2008

The Manager
DTZ
Box 27 Alexandra
alexandra@dtz.co.nz



Dear CCL via DTZ

CORANZ Submission: Awakino expired POL

This submission is made on behalf of the Council of Outdoor Recreation Associations of New Zealand - CORANZ. The Council is the national association of seven major national outdoor recreation associations – New Zealand Federation of Freshwater Anglers, New Zealand Deerstalkers Association, New Zealand Four Wheel Drive Association, Option4 – Recreational sea fishers' Trust, Public Access New Zealand, New Zealand Bowhunters Society, New Zealand Salmon Anglers Association; and the regional Marlborough Recreational Fishers Association. Our members seek discussion and common interests on outdoor recreation issues.

CORANZ member associations have approximately 18,000 members in total, and represent one of the larger membership alliances in New Zealand. CORANZ is interested in protecting public back-country wild land areas, parks and public open space in a natural state, for sustainable outdoor recreation purposes.

1 Summary: This 800 Ha area was formerly a pastoral occupation licence (POL), a licence to graze with no right of renewal, and no rights to exclude the public. It has now expired. So it is being dealt with as unoccupied Crown land, under Part 3 of the Crown Pastoral Lands Act 1998. ie it is unencumbered by any lease or licence, or commitment to a past licensee.

This former POL was surrendered from the original pastoral lease in 1988, paving the way for the rest of the pastoral lease to be free-held. Consequently, it has already come through effectively, a negotiated tenure review process.

It has valuable open space, tussock and montane landscapes, recreational hunting, tramping and amenity values, evident in the photo of the Tin Hut and associated wilding pines. CORANZ supports it becoming a Conservation Area, and being added to the adjacent Hawkdun Conservation Park.

2 Area is appropriate for adding to the Hawkdun Conservation Park:

The area is backed in the west and south by public conservation land that is part of the Hawkdun-Oteake proposed Conservation Park. As seen from the photo, it is attractive tussock, fell-field and open mountainland, in a relatively natural state, and primarily of Class VII (404 Ha – severe limitations for pastoral lease) and VIII (342 Ha – generally unsuited for pastoral use). It has already been surrendered from a former pastoral lease as part of a freeholding agreement. The low level of grazing allowed (400 SU on an annual basis, and not always used) highlights the limited nature of any grazing.

From this CORANZ concludes the land is not capable of ecologically sustainable pastoral use, and should not be freeholded (S 24 (a) Crown Pastoral Lands Act). It is far better added to the public conservation estate for its recreational and scenic qualities. It already has some

recreational hunting attributes, and would also be valued for tramping use, and for access to the St Mary Range behind.

3 Public Access and huts: Though access is possible from the adjacent Public Conservation Land, there is a need for public access directly from Kurow and the Waitaki Valley. Gaining such access is highly desirable, as it would open up the north side of the Hawkdun Conservation Park to users from the Waitaki Valley, and Canterbury generally. It should have been negotiated at the time of the surrender of the POL from the former lease. But this does not appear to have happened.

Public access for recreational hunters with made-safe firearms is needed, preferably along with public 4WD access. 4WD access makes it more attractive for big game hunters, because it is then easier to take out meat harvested for the table. This would also encourage hunters into the Hawkdun Conservation Park. As it is unlikely that access can be negotiated as part of this exercise, it will need to wait for negotiated access by DOC at a later stage.

The Tin Hut on the land should be kept for recreational use. It is similar to many shelter huts on former pastoral lease land, and although old, would be a valued base shelter for recreational users.

4 Future addition to the Hawkdun-Oteake proposed Conservation Park:

CORANZ supports this land becoming part of the Oteake-Hawkdun Conservation Park, where its primary purpose will be for facilitating recreational enjoyment and use. This is in line with Government's High Country objectives of forming conservation parks where possible from amalgamating lands surrendered from pastoral leases. This provides for facilitating recreation, which CORANZ strongly supports, as it should facilitate New Zealanders visiting and enjoying the area.

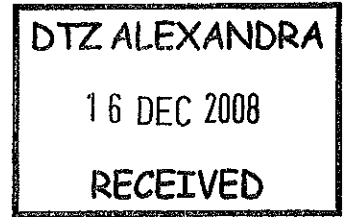
Thank you for the opportunity to make this submission. CORANZ strongly supports the Commissioner's proposal to make all of this land a conservation area. If you require any further information from us please contact the undersigned.

Yours truly

Hugh Barr
Secretary

Ken Taylor

From: Alison Devine [devine@ihug.co.nz]
Sent: Tuesday, 16 December 2008 6:23 a.m.
To: Ken Taylor
Subject: Submission- Pastoral Occupational Licence -Awakino Station.



The Commissioner of Crown Lands
c/o DTZ New Zealand Ltd

Dear Ken,

Awakino wishes to submit a submission on behalf of the family and Awakino Station Ltd to the Crown due to the expiry of the Pastoral Occupational Licence.

We are asking for 50 hectares of land around and including The Tin Hut to be transferred into the Sunny Peaks Pastoral Lease so we can retain ownership of the Tin Hut.

The Tin Hut has been an important part of Awakino's history for many years and is still used and maintained by the Station.

Its importance also lies in being the only shelter this side of the Range for many kilometres.

We would like a grazing license which we see as being crucial in the drought years to enable us to keep and feed cows.

We would accept grazing rights as becoming part of the Sunny Peaks Pastoral lease rather than Freehold.

Yours Faithfully

Alison Devine
Chairperson and Shareholder
Awakino Station Limited.



FEDERATED MOUNTAIN CLUBS OF NEW ZEALAND (Inc.)

P.O. Box 1604, Wellington



16 December 2008

The Commissioner of Crown Lands
c/- DTZ Ltd.
PO Box 27
ALEXANDRA



Dear Sir,

Re: Preliminary Proposal for Tenure Review: Awakino POL (Oo 098)

I write on behalf of Federated Mountain Clubs of NZ Inc. (FMC) which represents some 13,000 members of tramping, mountaineering, climbing and other outdoor clubs throughout New Zealand. We also indirectly represent the interests and concerns of many thousands of private individuals who may not currently be members of clubs but who enjoy recreation in the back country.

On their behalf, FMC aims to enhance recreation opportunities, to protect natural values, especially landscape and vegetation, and to improve public access to the back country through the tenure review process.

FMC fully supports the objectives of tenure review as set out in the Crown Pastoral Land (CPL) Act 1998, and the more recently stated government objectives for the South Island high country especially the following:-

- to promote the management of the Crown's high country in a way that is ecologically sustainable.*
- to protect significant inherent values of reviewable land by the creation of protective measures; or preferably by restoration of the land concerned to full Crown ownership and control.*
- to secure public access to and enjoyment of high country land.*
- to ensure that conservation outcomes for the high country are consistent with the NZ Biodiversity Strategy.*
- to progressively establish a network of high country parks and reserves.*

[EDC Min (03) 5/3; CAB Min (03) 11/5 refer]

FMC appreciates this opportunity to comment on the Preliminary Proposal for the review of Awakino POL. We also appreciate DTZ facilitating access for inspection, and the holder for permission to inspect the property on 9 December 2008.

THE PRELIMINARY PROPOSAL

FMC understands that the Preliminary Proposal is for 800 ha (approximately) to be designated as land to be retained as land in full Crown ownership and control as a conservation area pursuant to Section 86(5)(a)(i) Crown Pastoral Land Act 1998.

FMC COMMENTARY AND SUBMISSIONS

The details of FMC views on, and support for, the Preliminary Proposal are presented below. Please also refer to the accompanying illustrations listed in Appendix 1.

FMC understands that this area consists of the unrenovable licence known as 'Awakino' which occupies some 800 ha of land between (and including parts of) the headwaters of the Kurow and East Branch Awakino Rivers. The landform includes the following natural features:- the deeply etched side slopes that overlook the East Branch of the Awakino (Fig.1), the low saddle between the East Branch and the Kurow River, and a series of steep short valleys that penetrate into the St Marys Range which are characterised by large areas of scree and stone pavement.

We note that over 40% of the POL is classified Land Use Capability (LUC) Class VIII land (defined as unsuitable for pastoral production) while a further 50% is LUC Class VIIe land characterised by Dunstan Steepland High Country Yellow Brown Earth soils which are severely limited for pastoral use. (Fig.2). Given this distribution of soils and LUC classes it is difficult to imagine how this property (which consists of less than 10% land suitable for pastoral production) could be managed in a way that could support ecologically sustainable pastoral use. We submit that renewal of the Licence would not "*promote the management of Crown land in a way that is ecologically sustainable*" as required under Part 3 of the Crown Pastoral Land Act 1998, and that the Licence should not therefore, be renewed.

On the other hand we note that the Preliminary Proposal Document (CPL Standard 12) states under the heading 'Discussion of the proposed delegations' that "*It is expected that the tussock and shrubland ecosystems that currently exist within the area concerned would be sustained. It is therefore concluded that the retention of the land by the Crown would be expected to promote the management of the land in a manner that is ecologically sustainable*". This expectation will satisfy one of the two main objectives of a Part 3 Review (Fig. 3).

The steep and frequently scree-covered slopes are an impressive and dominant feature of the St Marys Range in general and this POL and its surrounding landscapes are typical (Fig. 4). Vegetation in many places is sparse but where present is mainly tussock grassland with patches of drachophyllum and some areas of cushion plants on dry exposed spurs. This combination of extensive scree slopes, alpine cushion plants, and sporadic tussock grassland give an impression of a largely unmodified landscape. This almost skeletal landscape with conspicuous scree and patterned ground features clearly reveal its geological origins and developmental processes through an interpretive value that landscape architects call its high 'legibility'. Because of these high values of naturalness and legibility it would be entirely appropriate to designate the entire POL as a new conservation area. In due course it is anticipated (and hoped) that this would be incorporated into the proposed Oteake Conservation Park.

Importantly, the southern, western boundaries and part of the northern boundary of the POL adjoin existing or proposed conservation land. This is important because this conservation land has been, or soon will be, incorporated into the proposed Oteake Conservation Park (Fig.5). It is notable that the Summary of the Preliminary Proposal document points out that its location "*places the licence in the context of an enclave into associated conservation land and indeed is not separated from the land to the west. A review of the subject area must be considered in this context*" (Fig. 5). It is most appropriate therefore to designate the POL as land to be retained in full Crown ownership and control as indicated in the Proposal.

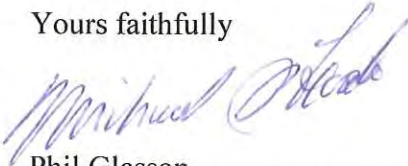
It is also important to note that a public access route through the proposed Park crosses the St Marys Range from Hut Creek (in the Otematata catchment) to the Awakino/Kurow catchment. This route runs very close the northern boundary of Awakino POL and joins the legal road which continues down the East Branch to join the Awakino Road and on down to Kurow (Figs 1, 4 and 6). We note that the legal alignment crosses into the POL at its westernmost point even though the actual formation of the track remains outside the POL. This route has already been used by the Goldfields Cavalcade and traverses some spectacular scree country in the St Marys Range (Fig. 4).. It is noteworthy that while many parts of St Marys Range are steep, rugged and difficult to traverse due to steep and extensive scree and stone pavement, this route follows a relatively gentle gradient for most of its length. It is therefore, particularly important for recreational use. After the new Conservation Park is gazetted it will become increasingly well used by public recreationalists. It is only a short diversion off this route to the "Tin Hut" among the trees near the northern boundary of the POL (Fig. 6).

For all the above reasons, the addition of Awakino POL to the public conservation estate will be a valuable addition, out of proportion to its small size.

The Preliminary Proposal Document (CPL Standard 12) finally states *that "Following consideration of the resource information and the views of the parties consulted, it is the recommendation of this report that the land be retained in full Crown ownership and control"*. **FMC fully endorses and supports this recommendation and the Preliminary Proposal which is for 800 ha (approximately) to be designated as land to be retained as land in full Crown ownership and control as a conservation area pursuant to Section 86(5)(a)(i) Crown Pastoral Land Act 1998.**

Finally, FMC thanks the Crown Agent, DTZ Ltd. for facilitating NGO inspection of the property and the holder for granting permission to inspect the property on 9 December 2008. We also thank the Commissioner of Crown Lands for the opportunity to comment on the Preliminary Proposal for the tenure review of Awakino POL.

Yours faithfully



pp Phil Glasson
Secretary, Federated Mountain Clubs of NZ Inc.,

Please also refer to the attached Appendix 1. List of Figures.

Appendix 1. List of Figures

Fig. 1. Looking towards the deeply etched side slopes that overlook the East Branch of the Awakino River which flows down to Kurow. The view here is from a track which closely follows a legal road over the St Marys Range, which will become increasingly important for recreation when it becomes a major entry point into the proposed Oteake Conservation Park.

Fig. 2. Over 40% of the land in the POL is classified LUC Class VIIe and about 50% is LUC Class VIII, totally unsuited for pastoral production. Less than 10% of the property is classified with even moderate suitability for pastoral production. It is therefore hard to imagine how it could be managed in a way which would "*promote the management of Crown land in a way that is ecologically sustainable*" as required by the CPL Act.

Fig. 3. The Preliminary Proposal states that "*It is expected that the tussock and shrubland ecosystems that currently exist within the area concerned would be sustained. It is therefore concluded that the retention of the land by the Crown would be expected to promote the management of the land in a manner that is ecologically sustainable*". This would satisfy one of the main objectives of the CPL Act.

Fig. 4. Steep and frequently scree-covered slopes are an impressive and dominant feature of the St Marys Range. The Awakino POL and surrounding landscapes are typical. Here the Otago Goldfields Cavalcade descends from the St Marys Range crest where the Awakino and Kurow river systems saddle with Hut Creek in the Otematata River system: This is an important access route through the proposed Oteake Conservation Park.

Fig. 5. Three of the boundaries of the Awakino POL adjoin public conservation land which will be part of the Proposed Oteake Conservation Park. The POL is thus an enclave into associated conservation land. The tenure review Preliminary Proposal states that "*A review of the subject area must be considered in this context*". Here walkers are ascending the Hut Creek track on adjoining conservation land.

Fig. 6. The Awakino POL includes the "Tin Hut" which could become important as a staging post into the proposed Oteake Conservation Park. Although close to the legal road which crosses the St Marys Range, the hut is currently not accessible from that road by the general public without permission from the holder.



Fig. 1. Looking towards the deeply etched side slopes that overlook the East Branch of the Awakino River which flows down to Kurow. The view here is from a track which closely follows a legal road over the St Marys Range, which will become increasingly important for recreation when it becomes a major entry point into the proposed Oteake Conservation Park.



Fig. 2. Over 40% of the land in the POL is classified LUC Class VIIe and about 50% is LUC Class VIII, totally unsuited for pastoral production. Less than 10% of the property is classified with even moderate suitability for pastoral production. It is therefore hard to imagine how it could be managed in a way which would *"promote the management of Crown land in a way that is ecologically sustainable"*, as required by the CPL Act.



Fig. 3. The Preliminary Proposal states that *“It is expected that the tussock and shrubland ecosystems that currently exist within the area concerned would be sustained. It is therefore concluded that the retention of the land by the Crown would be expected to promote the management of the land in a manner that is ecologically sustainable”*. This would satisfy one of the main objectives of the CPL Act



Fig. 4. Steep and frequently scree-covered slopes are an impressive and dominant feature of the St Marys Range. The Awakino POL and surrounding landscapes are typical. Here the Otago Goldfields Cavalcade descends from the St Marys Range crest where the Awakino and Kurow river systems saddle with Hut Creek in the Otematata River system: This is an important access route through the proposed Oteake Conservation Park.



Fig. 5. Three of the boundaries of the Awakino POL adjoin public conservation land which will be part of the Proposed Oteake Conservation Park. The POL is thus an enclave into associated conservation land. The tenure review Preliminary Proposal states that “*A review of the subject area must be considered in this context*”. Here walkers are ascending the Hut Creek track on adjoining conservation land.

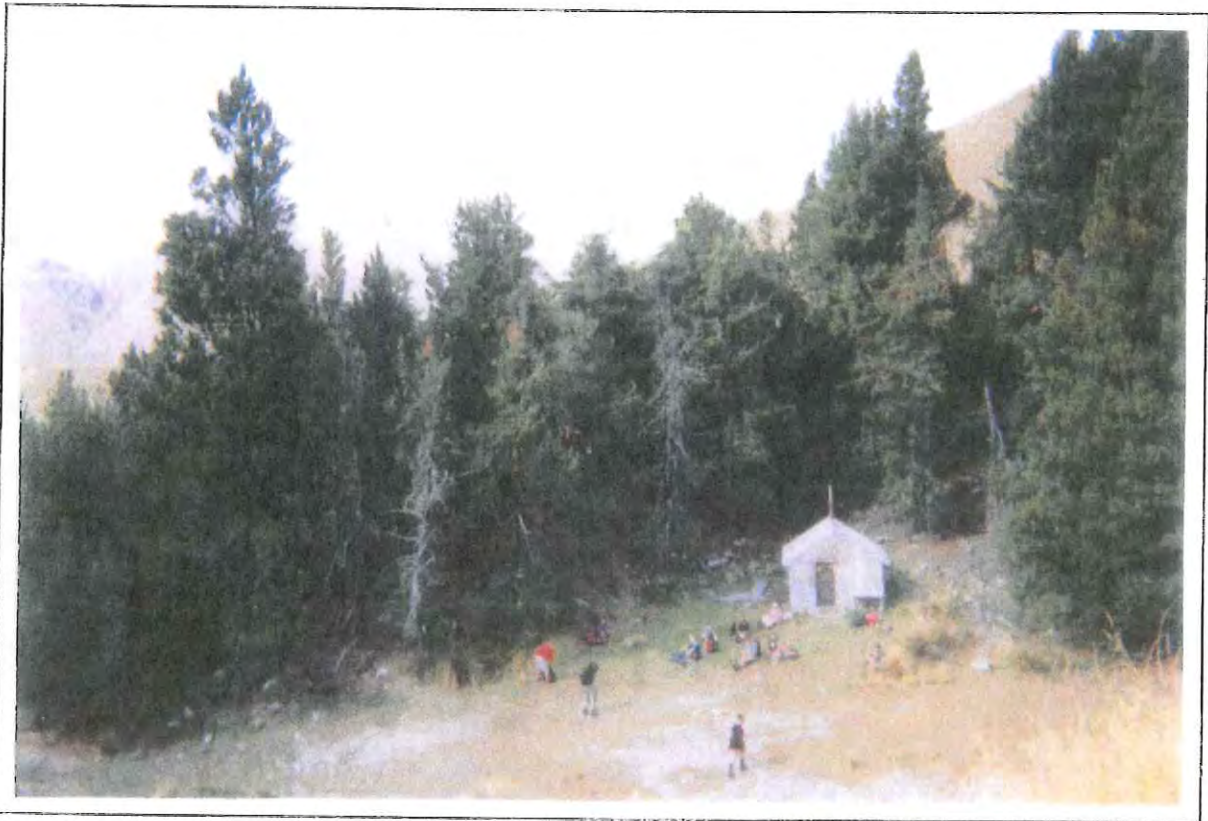


Fig. 6. The Awakino POL includes the “Tin Hut” which could become important as a staging post into the proposed Oteake Conservation Park. Although close to the legal road which crosses the St Marys Range, the hut is currently not accessible from that road by the general public without permission from the holder.