

Crown Pastoral Land Tenure Review

Lease name : AWAPIRI STATION

Lease number : PM 016

**Plan attaching to the Conservation
Resources Report**

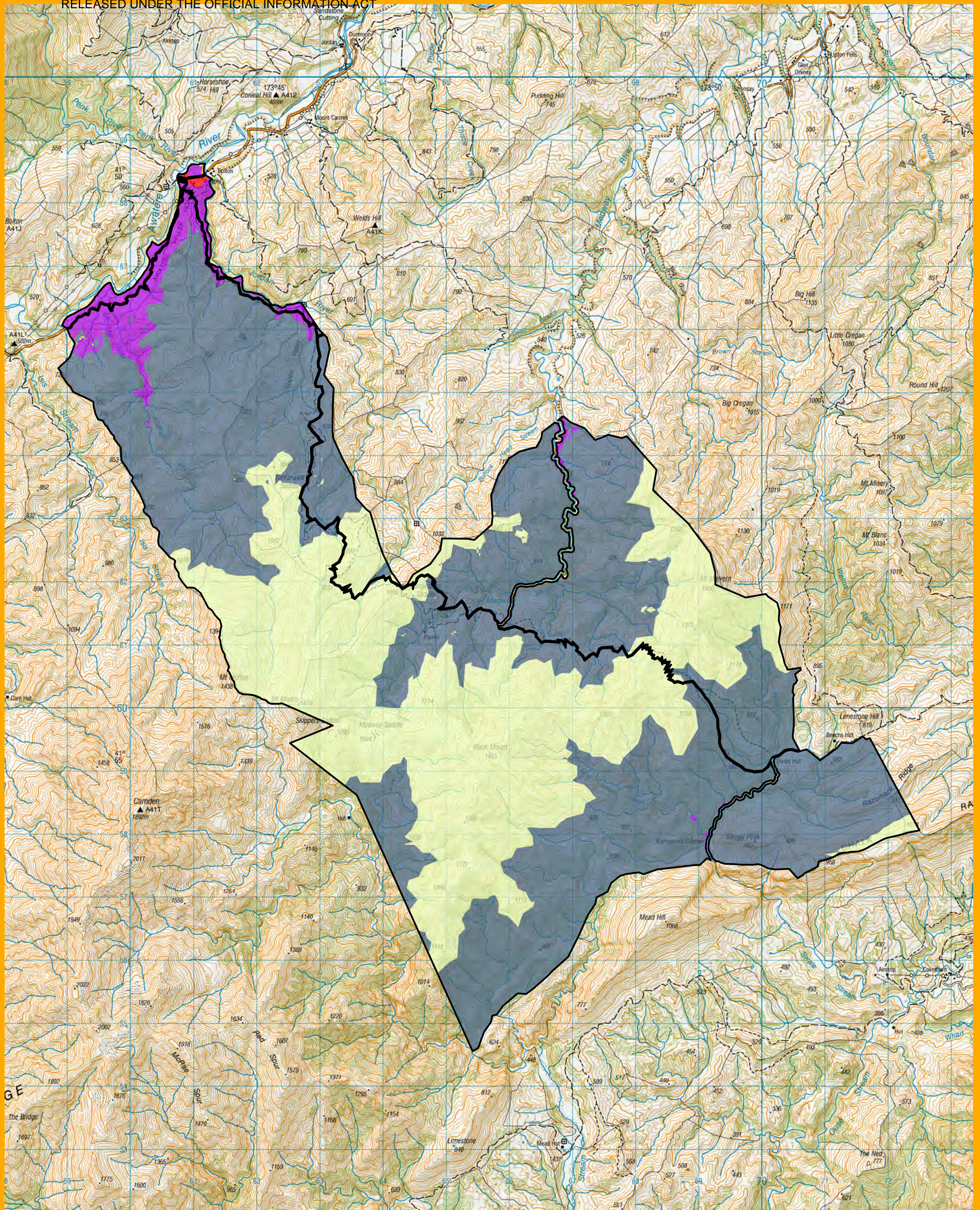
- LENZ Map**
- Botanical Values Map**

The following plan forms page XX of the Conservation Resources Report provided by the Department of Conservation.

It is released under the Official information Act 1982.

December

10



LENZ Threat Categories - Awapiri Station Pastoral Lease Conservation Resources Report 2010



Department of Conservation
Te Papa Atawhai

New Zealand Government

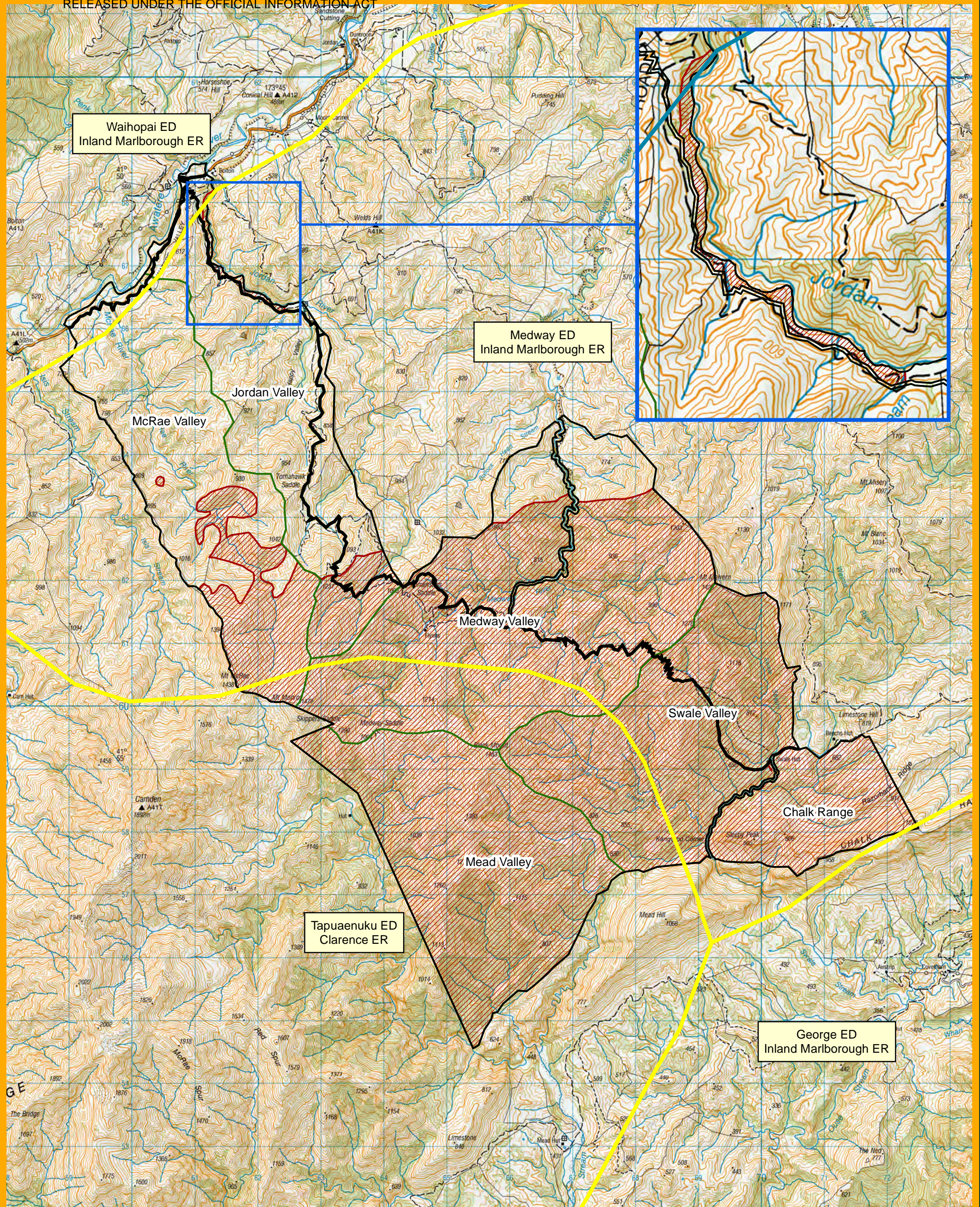


3
Kilometres

Legend

- Awapiri Station Pastoral Lease
- Acutely threatened
- Chronically threatened
- At risk
- Critically under-protected
- Under-protected
- Less reduced and better protected

Base map - LINZ topographic series
Cadastre - LINZ February 2010



Botanical Values - Awapiri Station Pastoral Lease Conservation Resources Report 2010



Department of Conservation
Te Papa Atawhai

New Zealand Government



Kilometres

Legend

- Awapiri Station Pastoral Lease
- Awapiri Station Botanical Units
- Awapiri Station Botanical Values
- Ecological Regions and Districts

Base map - LINZ topographic series
Cadastre - LINZ February 2010