

Crown Pastoral Land Tenure Review

Lease name: BARROSA

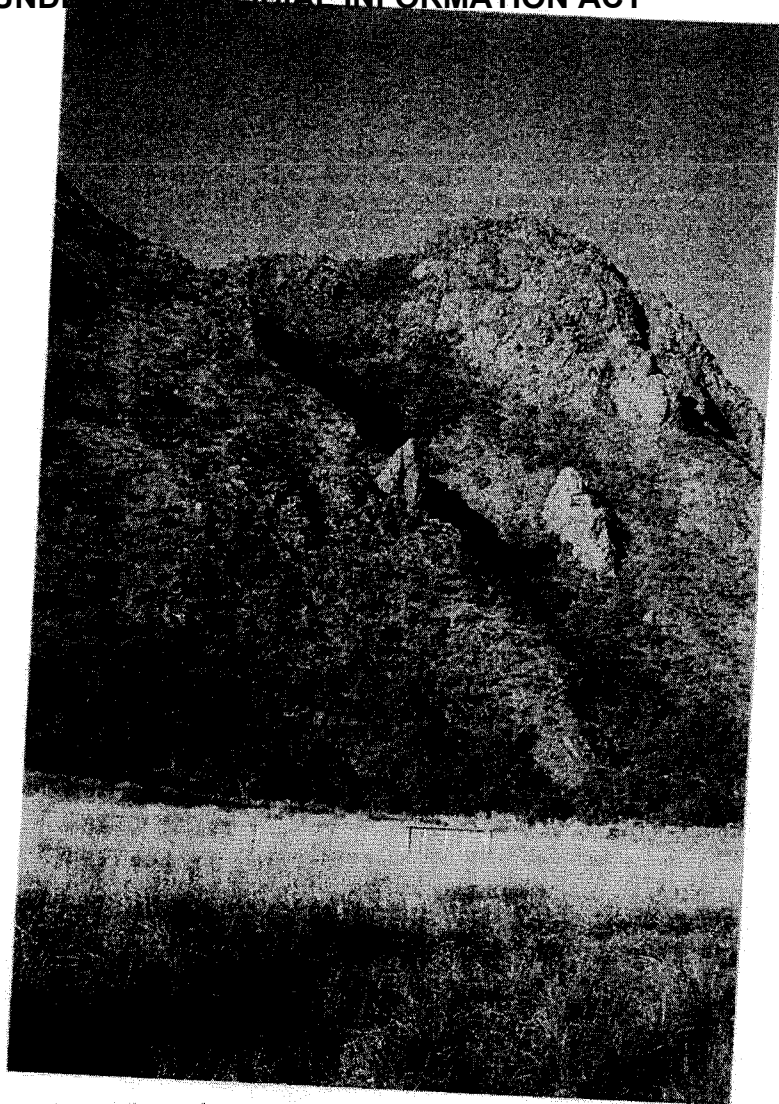
Lease number: PC 125

Public Submissions - Part 2

These submissions were received as a result of the public advertising of the Preliminary Proposal for Tenure Review.

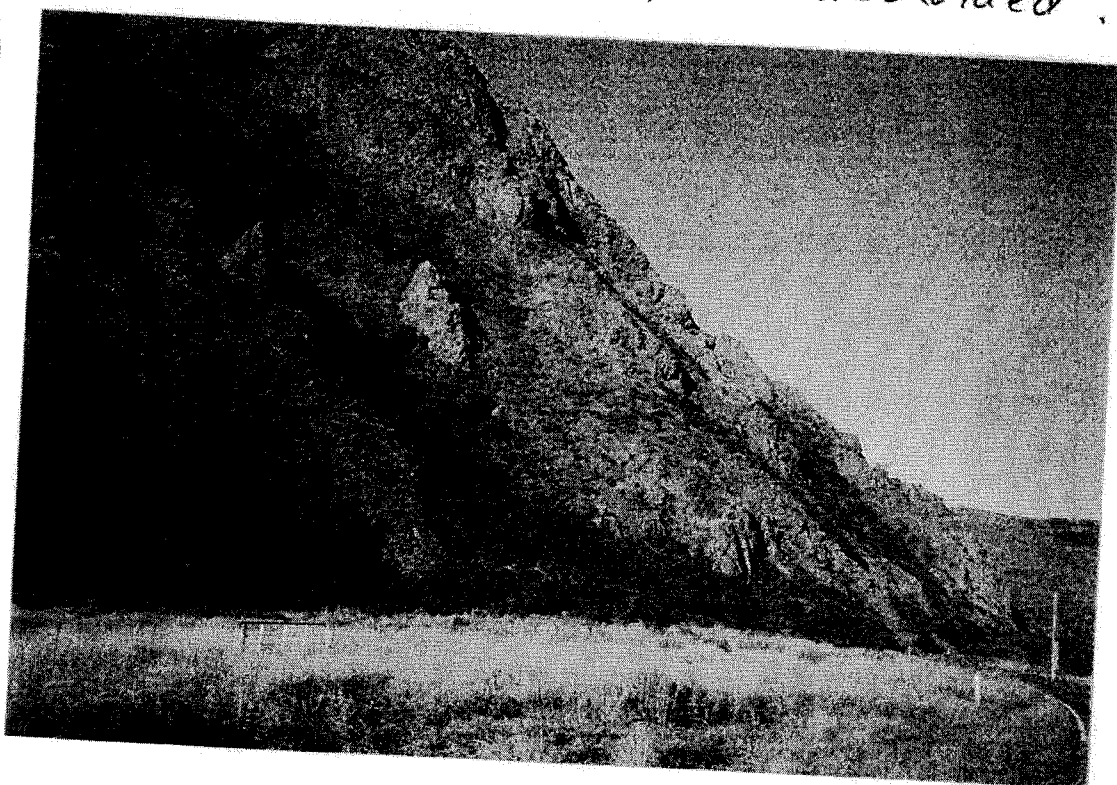
December

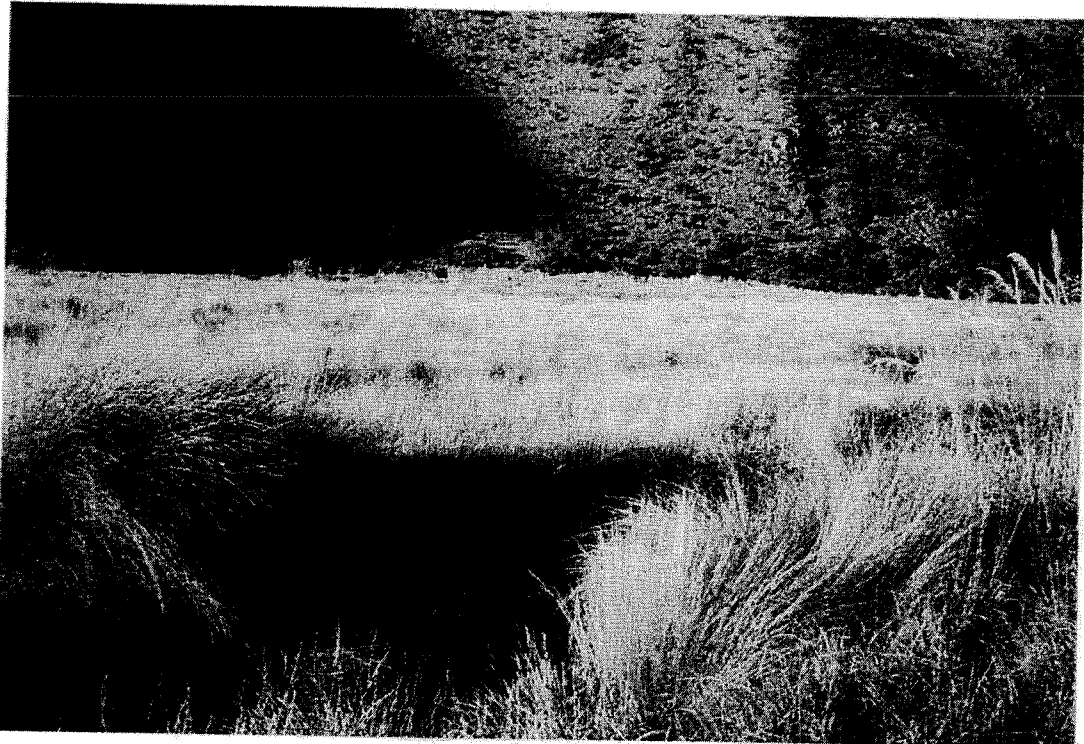
05



④ Eastern end of Blowing Point red tussock wetland, rock bluffs and shrublands which Forest and Bird seeks to be protected as conservation land, not freeholded.

↓
⑤

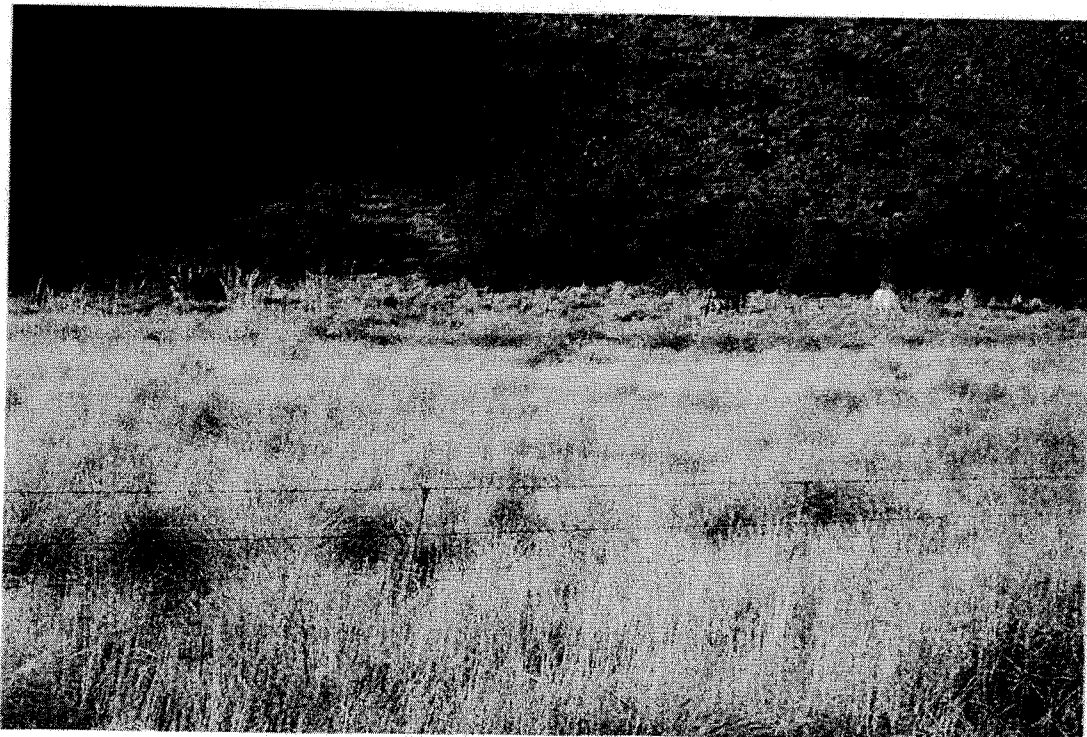


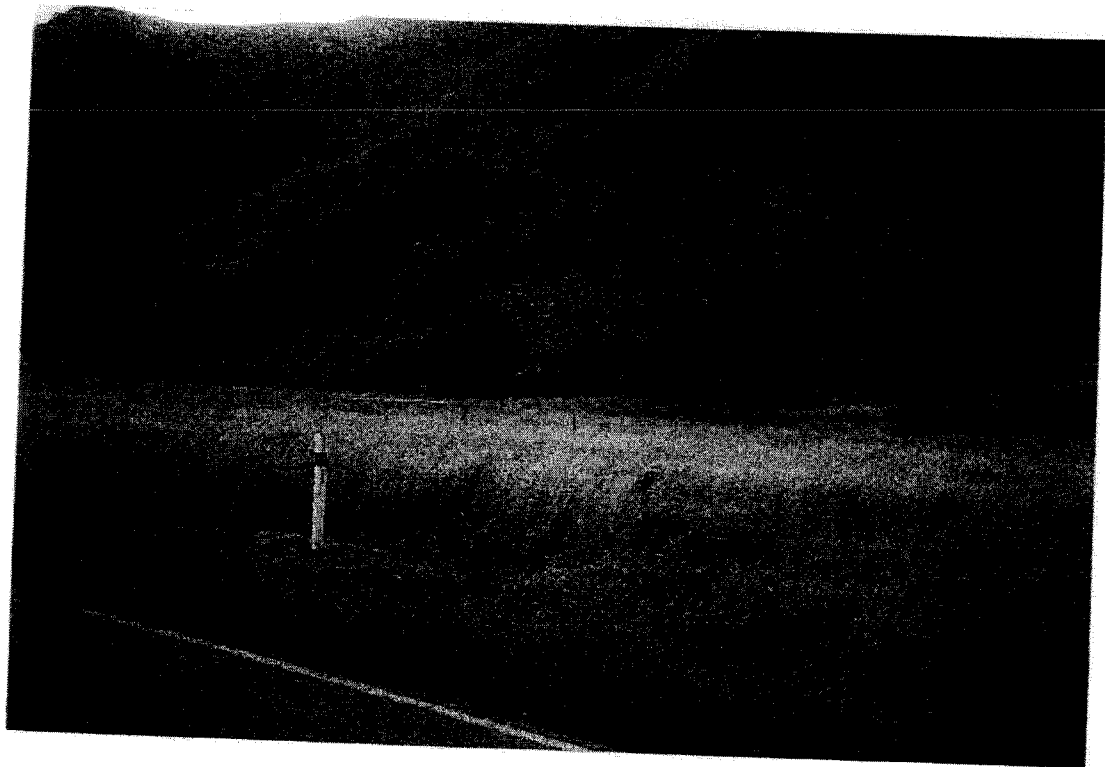


⑥

Red tussock wetland and adjacent shrublands
and rock outcrops from Ashburton Gorge Rd
south east of Blowing Point.

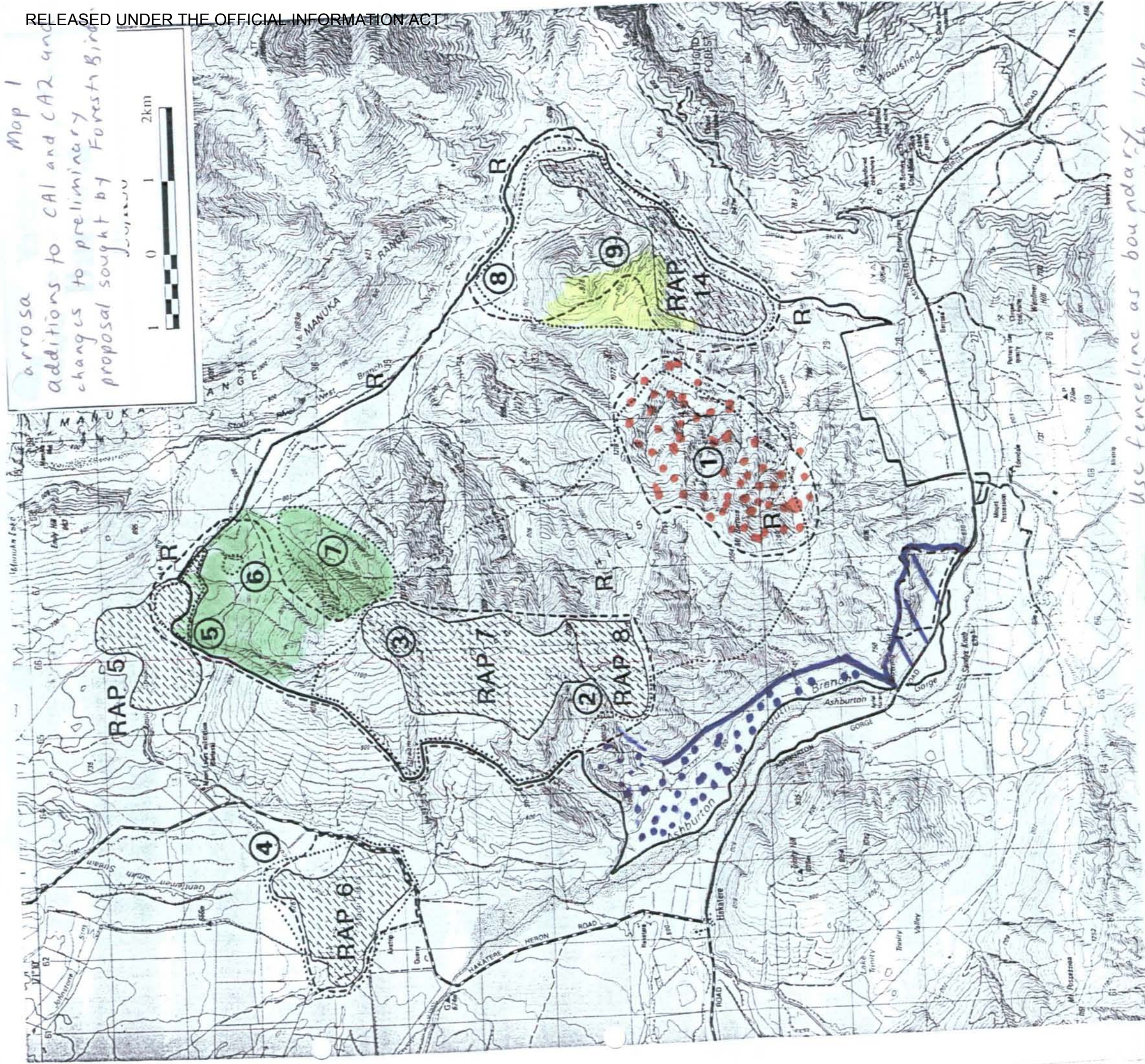
⑦





⑧ Blowing Point wetland and road verge

Map 1
 additions to CA1 and CA2 and
 changes to preliminary
 proposal sought by Forests Bird



Key

- Landscape value
- Ecological value
- R Recreation value
- [Hatched Box] R.A.P.
- Legal boundary

- [Green Box] Use fenceline as boundary with Lake Emily and Lake Heron conservation area - include ephemeral wetland.
- [Blue Box] Expand CA1 to include Ashburton River South Branch terraces
- [Yellow Box] CA4 Red tussock wetlands & shrublands - Blowing Point
- [Red Box] Expand CA2 to include rest of area with significant inherent values including tussock wetland
- [Red Dotted Box] POC recommended which deserves inclusion in CA1 or 2