

Crown Pastoral Land Tenure Review

Lease name: BARROSA

Lease number: PC 125

Public Submissions - Part 4

These submissions were received as a result of the public advertising of the Preliminary Proposal for Tenure Review.

December

05

Ashburton High Country Interest Group

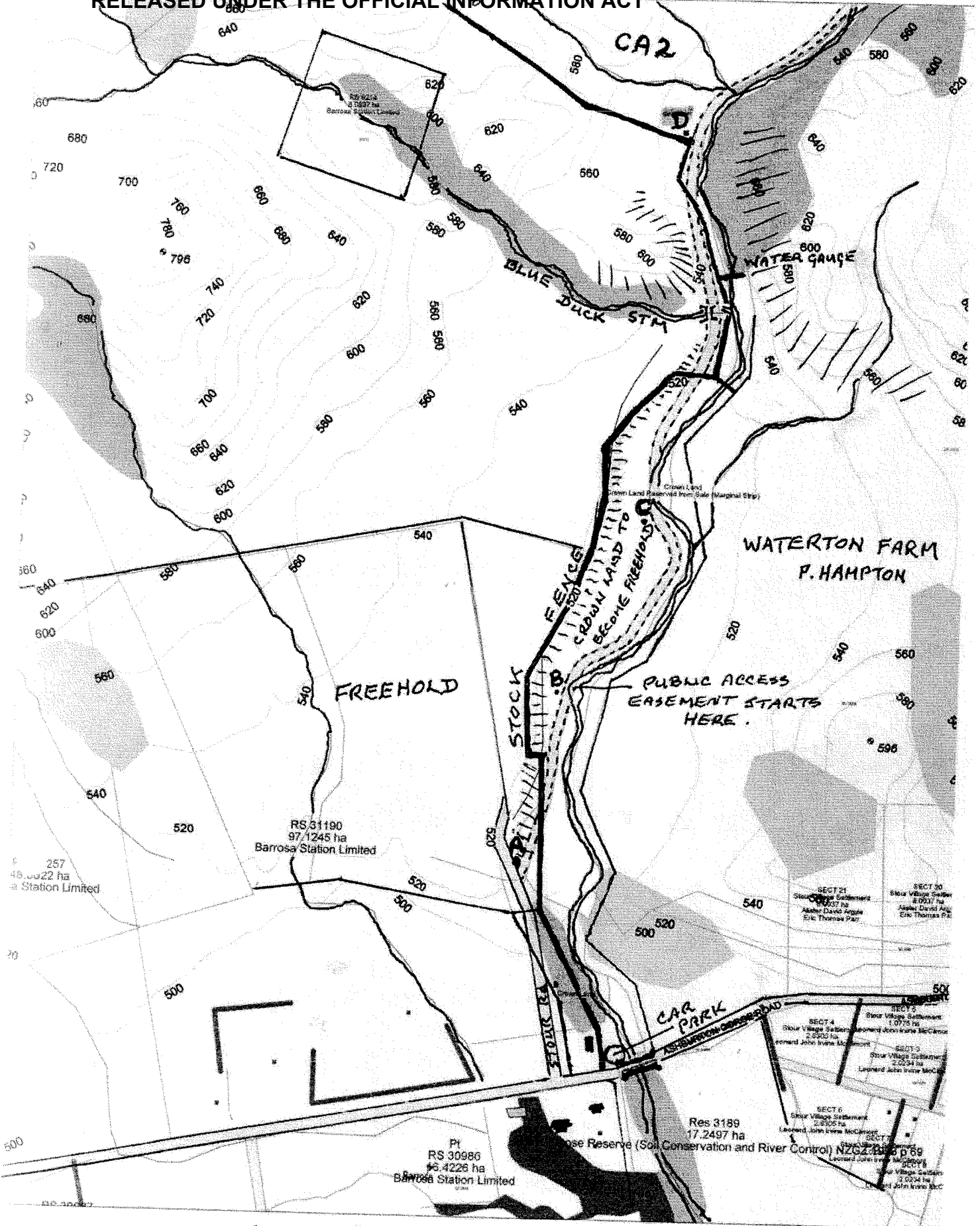
Name	Address	Background / interest
Alan Ayers	RD 6, Ashburton	Mid Canterbury farmer
Christine Bellringer	Mt Somers	Tourist accommodation provider
Gerard Bradley	113 Princess St	Mt Somers Walkway Society (Chairman)
David Howden	13 Smitheram St, Ash	Retired farmer
Bryan Humm	Mt Somers	Methven Tramping Club
Warren Jowett	Stavveley	Mt Somers-Foothills Promotions Association
Larry Rattray	Ashburton	Recreational fisherman
John Leith	Staveley	Mountain biker
Ian McBride	Ashburton	NZ Deer Stalkers Association
John Morgan	Ashburton	Mt Somers Walkway Society
Derek Newton	Springburn	Ashburton Water Trust
Robert Schikker	Mt Somers	Mt Somers Citizens Association
Brian Senior	Methven	NZ Alpine Club
Dan Symons	Alford Forest	Farmer
Robin Burton	Ashburton	Ashburton Strollers Club
Lindsay Holland	Ashburton	ex Aoraki Conservation Board

Groups and individuals we have had discussion with

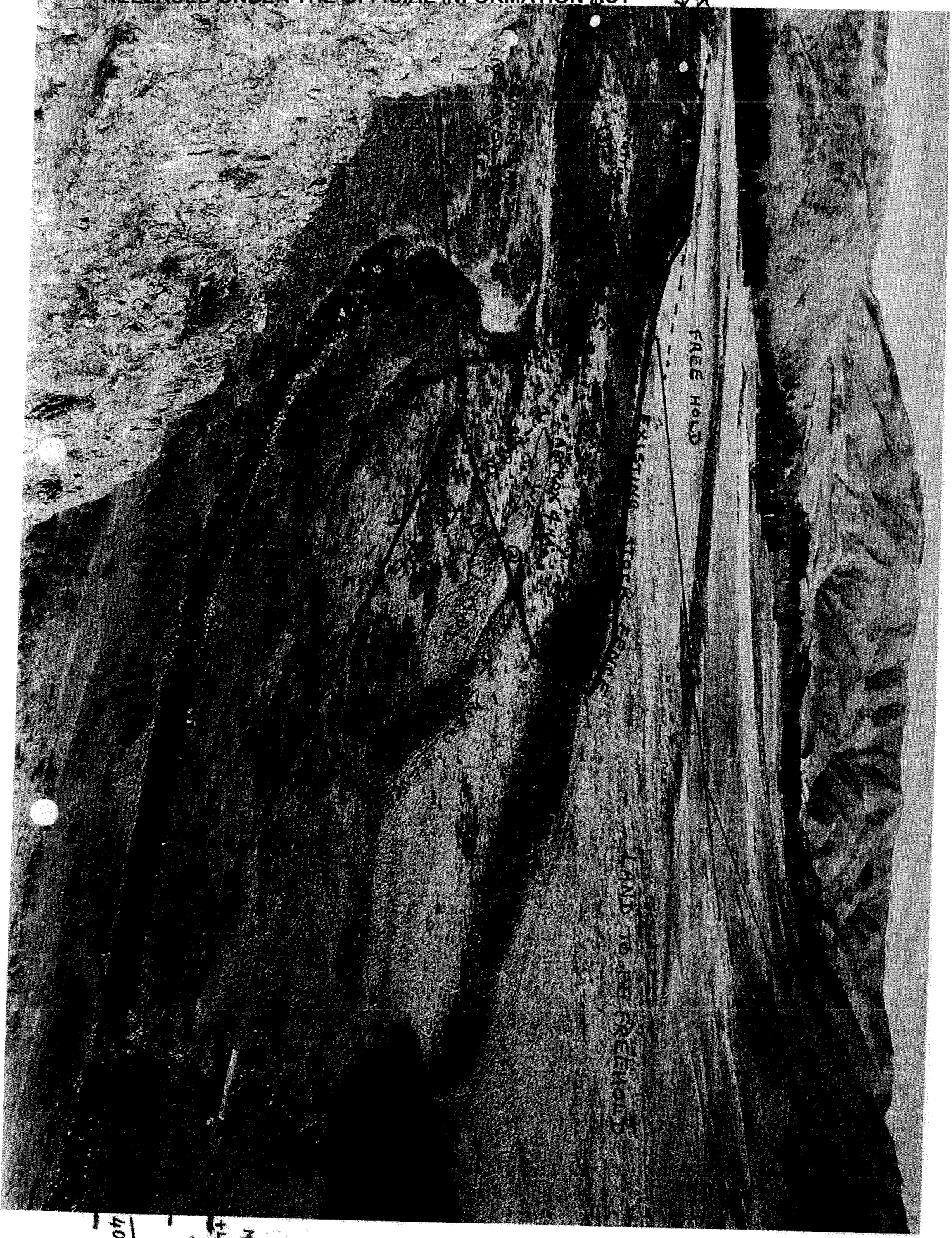
R. Grigg, Barossa Station
P & K Harmer Castle Ridge Station
Department of Conservation - Raukapuka Area Office
Fish & Game Temuka
Ashburton Water Trust
Electricity Ashburton
Federated Farmers Ashburton
Victory Lime 2000 (M. Acland)
Federated Mountain clubs
Ashburton Historical Society
Mr Somers-Foothills Promotions Association

Discussion and presentation to

Ashburton District Council
Aoraki Conservation Board.



AK
B*

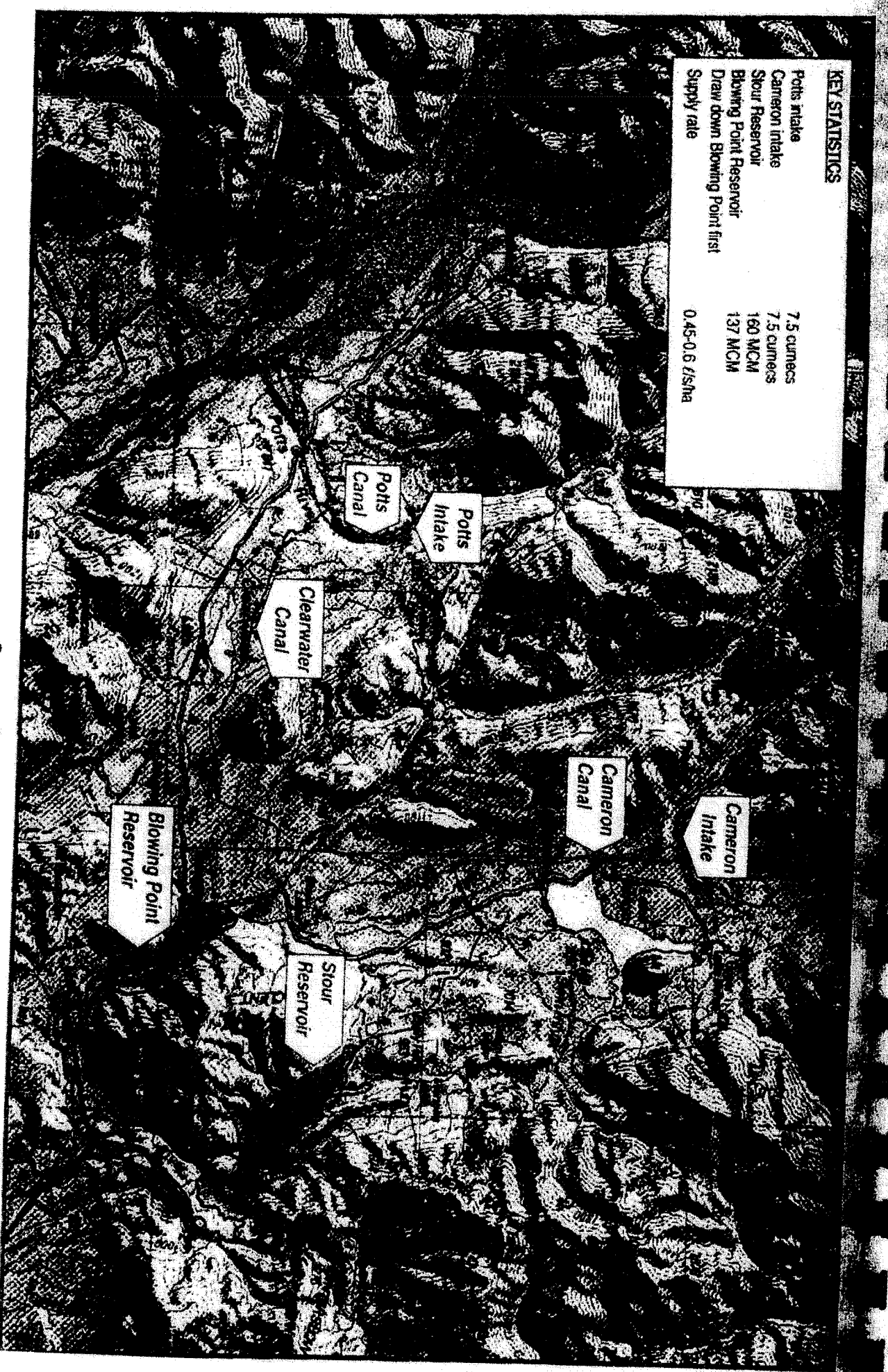


400m

MARGINAL STRIP + LEGAL ROAD 400m

KEY STATISTICS

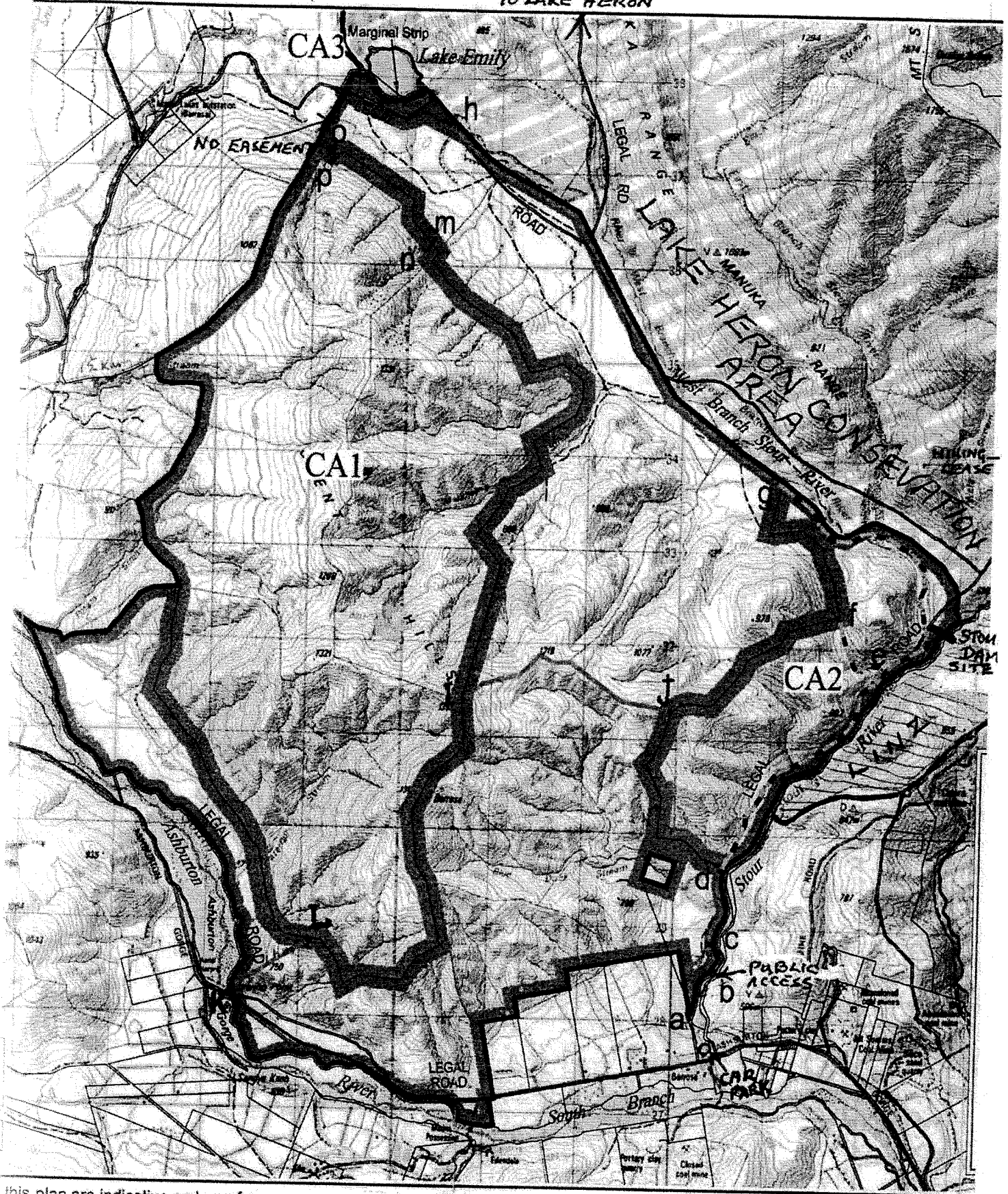
Potts Intake	7.5 cumecs
Cameron Intake	7.5 cumecs
Stour Reservoir	160 MCM
Blowing Point Reservoir	137 MCM
Draw down Blowing Point first	
Supply rate	0.45-0.6 t/s/ha



OPTION C

Ashburton District Water Resource Development - Stage II: Pre-feasibility
 Document for Ashburton Community Water Trust (Report No 44461, March 2001) - Appendix 1

TO LAKE HERON



This plan are indicative and are for purposes only. Precise boundary positions may vary during implementation

Freehold will be subject to Part IV A of the Act and Part IV A applies to the entire length of the boundaries of the land to be disposed of

BARROSA PASTORAL LEASE



1:50,000 SCALE (Kilometres)

EASEMENTS ONLY 10m WIDE.
APPENDIX 4 PAGE 3.