

Crown Pastoral Land Tenure Review

Lease name : BEAUMONT STATION

Lease number : PO 362

Conservation Resources Report - Part 2

As part of the process of Tenure Review, advice on significant inherent values within the pastoral lease is provided by Department of Conservation officials in the form of a Conservation Resources Report. This report is the result of outdoor survey and inspection. It is a key piece of information for the development of a preliminary consultation document.

Note: Plans which form part of the Conservation Resources Report are published separately.

These documents are all released under the Official information Act 1982.

December

10

APPENDIX 5: Plant Species List – Beaumont Pastoral Lease

Scientific name	Plant type	Family	Abundance at site	Localities	Threat ranking	Common name
<i>Abrotanella caespitosa</i>	DICOTYLEDONOUS HERBS	Asteraceae	Local	Wetlands	Not threatened	
<i>Abrotanella inconspicua</i>	DICOTYLEDONOUS HERBS	Asteraceae	Local	Ridgetops	Not threatened	
<i>Abrotanella patearoa</i>	DICOTYLEDONOUS HERBS	Asteraceae	Local	Tops	Naturally Uncommon	
<i>Acaena anserinifolia</i>	DICOTYLEDONOUS HERBS	Rosaceae	Occasional	Throughout	Not threatened	bidibid
<i>Acaena caesiiglauca</i>	DICOTYLEDONOUS HERBS	Rosaceae	Occasional	Tussockland	Not threatened	bidibid
<i>Acaena inermis</i>	DICOTYLEDONOUS HERBS	Rosaceae	Rare	Gravels	Not threatened	bidibid
<i>Acaena novae-zelandiae</i>	DICOTYLEDONOUS HERBS	Rosaceae	Rare	Lower altitudes	Not threatened	bidibid
<i>Acaena tesca</i>	DICOTYLEDONOUS HERBS	Rosaceae	Rare	Rock outcrops	Naturally Uncommon	bidibid
<i>Achillea millefolium</i>	DICOTYLEDONOUS HERBS	Asteraceae	Rare	Lower altitudes	Exotic	yarrow
<i>Aciphylla aurea</i>	DICOTYLEDONOUS HERBS	Apiaceae	Common	Tussockland	Not threatened	spaniard
<i>Aciphylla glaucescens</i>	DICOTYLEDONOUS HERBS	Apiaceae	Local	riparian sites	Not threatened	
<i>Aciphylla hectorii</i>	DICOTYLEDONOUS HERBS	Apiaceae	Local	Tops	Not threatened	dwarf spaniard
<i>Aciphylla scott-thomsonii</i>	DICOTYLEDONOUS HERBS	Apiaceae	Rare	Gullies	Not threatened	spaniard
<i>Acrothamnus colensoi</i>	DICOTYLEDONOUS TREES AND SHRUBS	Ericaceae	Occasional	Tussockland	Not threatened	
<i>Agrostis capillaris</i>	MONOCOTYLEDONOUS HERBS	Agrostidinae	Abundant	Throughout	Exotic	browntop
<i>Agrostis muelleriana</i>	MONOCOTYLEDONOUS HERBS	Poaceaea (Agrostidinae)	Occasional	Tussockland	Not threatened	
<i>Agrostis muscosa</i>	MONOCOTYLEDONOUS HERBS	Gramineae (Agrostidinae)	Local	Tops	Not threatened	pincushion grass
<i>Agrostis pallescens</i>	MONOCOTYLEDONOUS HERBS	Poaceaea (Agrostidinae)	Local	Wetlands	Not threatened	
<i>Agrostis personata</i>	MONOCOTYLEDONOUS HERBS	Gramineae (Agrostidinae)	Local	Ephemerally wet areas	Not threatened	
<i>Agrostis stolonifera</i>	MONOCOTYLEDONOUS HERBS	Agrostidinae	Local	Wetlands	Exotic	creeping bent
<i>Aira caryophyllea</i> subsp. <i>caryophyllea</i>	MONOCOTYLEDONOUS HERBS	Aveninae	Rare	Gravels	Exotic	silvery hair grass
<i>Alopecurus geniculatus</i>	MONOCOTYLEDONOUS HERBS	Agrostidinae	Local	Wetlands	Exotic	knead foxtail
<i>Anaphalioides bellidioides</i>	DICOTYLEDONOUS HERBS	Asteraceae	Occasional	Damp sites	Not threatened	
<i>Androstoma empetrifolia</i>	DICOTYLEDONOUS TREES AND SHRUBS	Epacridaceae	Rare	Wetlands	Not threatened	
<i>Anemone tenuicaulis</i>	DICOTYLEDONOUS HERBS	Ranunculaceae	Rare	Rock outcrops	Naturally Uncommon	

RELEASED UNDER THE OFFICIAL INFORMATION ACT

<i>Anisotome aromatica</i>	DICOTYLEDONOUS HERBS	Apiaceae	Occasional	Throughout	Not threatened	
<i>Anisotome flexuosa</i>	DICOTYLEDONOUS HERBS	Apiaceae	Local	Ridgetops	Not threatened	
<i>Anisotome imbricata</i> var. <i>imbricata</i>	DICOTYLEDONOUS HERBS	Apiaceae	Local	Subalpine cushionfield	Not threatened	
<i>Anthoxanthum odoratum</i>	MONOCOTYLEDONOUS HERBS	Phalaridinae	Common	Exotic grassland	Exotic	sweet vernal
<i>Anthriscus caucalis</i>	DICOTYLEDONOUS HERBS	Apiaceae	Local	CHR 607885. Exotic grassland	Exotic	beaked parsley
<i>Aphanes australiana</i>	DICOTYLEDONOUS HERBS	Rosaceae	Local	Exotic grassland	Exotic	
<i>Aporostylis bifolia</i>	MONOCOTYLEDONOUS HERBS	Orchidaceae	Local	Wetlands	Not threatened	
<i>Argyrotegium mackayi</i>	DICOTYLEDONOUS HERBS	Asteraceae	Local	Tops	Not threatened	
<i>Arthropodium candidum</i>	MONOCOTYLEDONOUS HERBS	Liliaceae	Rare	Lower altitudes	Not threatened	
<i>Asplenium appendiculatum</i> subsp. <i>appendiculatum</i>	FERNS	Aspleniaceae	Local	Beech forest	Not threatened	
<i>Asplenium flabellifolium</i> agg.	FERNS	Aspleniaceae	Local	Rock outcrops	Not threatened	necklace fern
<i>Asplenium flaccidum</i>	FERNS	Aspleniaceae	Local	Gullies	Not threatened	hanging spleenwort
<i>Asplenium hookerianum</i>	FERNS	Aspleniaceae	Local	Lower altitudes	Not threatened	Hooker's spleenwort
<i>Asplenium richardii</i>	FERNS	Aspleniaceae	Local	Rock outcrops	Not threatened	
<i>Astelia fragrans</i>	MONOCOTYLEDONOUS HERBS	Liliaceae	Rare	Gullies	Not threatened	
<i>Astelia linearis</i> var. <i>novaezelandiae</i>	MONOCOTYLEDONOUS HERBS	Liliaceae	Local	Tops	Not threatened	
<i>Astelia nervosa</i>	MONOCOTYLEDONOUS HERBS	Liliaceae	Rare	Gullies	Not threatened	
<i>Astelia nivicola</i>	MONOCOTYLEDONOUS HERBS	Liliaceae	Local	Snowbanks	Not threatened	
<i>Blechnum membranaceum</i>	FERNS	Blechnaceae	Rare	Bluffs	Not threatened	
<i>Blechnum montanum</i>	FERNS	Blechnaceae	Local	Gullies	Not threatened	mountain kiokio
<i>Blechnum penna-marina</i> subsp. <i>alpina</i>	FERNS	Blechnaceae	Occasional	Throughout	Not threatened	

RELEASED UNDER THE OFFICIAL INFORMATION ACT

<i>Blechnum vulcanicum</i>	FERNS	Blechnaceae	Local	Bluffs	Not threatened	
<i>Brachyglottis bellidioides</i> var. <i>bellidioides</i>	DICOTYLEDONOUS HERBS	Asteraceae	Occasional	Throughout	Not threatened	
<i>Brachyglottis southlandica</i>	DICOTYLEDONOUS HERBS	Asteraceae	Rare	Lower altitudes	Not threatened	
<i>Brachyscome</i> "Lammerlaw"	DICOTYLEDONOUS HERBS	Asteraceae	Local	Tussockland	Unknown	
<i>Brachyscome humilis</i>	DICOTYLEDONOUS HERBS	Asteraceae	Local	CHR 607861. Ephemeral wetlands	Data Deficient	
<i>Brachyscome radicata</i>	DICOTYLEDONOUS HERBS	Asteraceae	Rare	Tussockland	Not threatened	
<i>Brachyscome sinclairii</i>	DICOTYLEDONOUS HERBS	Asteraceae	Occasional	Throughout	Not threatened	
<i>Bromus hordeaceus</i>	MONOCOTYLEDONOUS HERBS	Bromeae	Local	Tussockland	Exotic	soft brome
<i>Bulbinella angustifolia</i>	MONOCOTYLEDONOUS HERBS	Liliaceae	Occasional	Tussockland	Not threatened	maori onion
<i>Callitriche petriei</i>	DICOTYLEDONOUS HERBS	Callitrichaceae	Local	Damp sites	Not threatened	starwort
<i>Capsella bursa-pastoris</i>	DICOTYLEDONOUS HERBS	Brassicaceae	Occasional	Lower altitudes	Exotic	shepherd's purse
<i>Cardamine</i> (b) (CHR 312947; "tarn")	DICOTYLEDONOUS HERBS	Brassicaceae	Rare	CHR 607865. Ephemerally wet areas	Nationally Critical	
<i>Cardamine</i> (c) (CHR 65058; Reporoa Bog)	DICOTYLEDONOUS HERBS	Brassicaceae	Rare	CHR 607866. Canadian Flats	Naturally Uncommon	
<i>Cardamine</i> (x) (; aff. <i>C. corymbosa</i> ; "small flower")	DICOTYLEDONOUS HERBS	Brassicaceae	Local	Bluffs	Not threatened	
<i>Cardamine corymbosa</i> agg. (hairy silique)	DICOTYLEDONOUS HERBS	Brassicaceae	Rare	CHR 607869. Rock outcrops	Unknown	
<i>Cardamine debilis</i> agg.	DICOTYLEDONOUS HERBS	Brassicaceae	Local	CHR 607859. Rock overhangs	Not threatened	
<i>Carex acicularis</i>	MONOCOTYLEDONOUS HERBS	Cyperaceae	Rare	Tops	Not threatened	
<i>Carex allanii</i>	MONOCOTYLEDONOUS HERBS	Cyperaceae	Rare	CHR 607887. Overhangs	Naturally Uncommon	
<i>Carex berggrenii</i>	MONOCOTYLEDONOUS HERBS	Cyperaceae	Rare	Damp sites	Naturally Uncommon	
<i>Carex breviculmis</i>	MONOCOTYLEDONOUS HERBS	Cyperaceae	Local	Tussockland	Not threatened	
<i>Carex comans</i>	MONOCOTYLEDONOUS	Cyperaceae	Rare	Talla Burn	Not threatened	

RELEASED UNDER THE OFFICIAL INFORMATION ACT

<i>Carex coriacea</i>	HERBS MONOCOTYLEDONOUS	Cyperaceae	Local	Wetlands	Not threatened	
<i>Carex dissita</i>	HERBS MONOCOTYLEDONOUS	Cyperaceae	Local	Gullies	Not threatened	
<i>Carex echinata</i>	HERBS MONOCOTYLEDONOUS	Cyperaceae	Local	Wetlands	Not threatened	star sedge
<i>Carex gaudichaudiana</i>	HERBS MONOCOTYLEDONOUS	Cyperaceae	Local	Wetlands	Not threatened	
<i>Carex geminata</i>	HERBS MONOCOTYLEDONOUS	Cyperaceae	Rare	Lower altitudes	Not threatened	
<i>Carex hectorii</i>	HERBS MONOCOTYLEDONOUS	Cyperaceae	Local	Tops	Not threatened	
<i>Carex lachenalii</i> subsp. <i>parkeri</i>	HERBS MONOCOTYLEDONOUS	Cyperaceae	Local	Subalpine cushionfield	Naturally Uncommon	
<i>Carex ovalis</i>	HERBS MONOCOTYLEDONOUS	Cyperaceae	Local	Wetlands	Exotic	oval sedge
<i>Carex pyrenaica</i> var. <i>cephalotes</i>	HERBS MONOCOTYLEDONOUS	Cyperaceae	Local	Tops	Not threatened	
<i>Carex sinclairii</i>	HERBS MONOCOTYLEDONOUS	Cyperaceae	Local	Wetlands	Not threatened	
<i>Carex solandri</i>	HERBS MONOCOTYLEDONOUS	Cyperaceae	Rare	Lower altitudes	Not threatened	
<i>Carex tenuiculmis</i>	HERBS MONOCOTYLEDONOUS	Cyperaceae	Local	Wetlands	Declining	
<i>Carex testacea</i>	HERBS MONOCOTYLEDONOUS	Cyperaceae	Local	Talla Burn	Not threatened	
<i>Carex virgata</i>	HERBS MONOCOTYLEDONOUS	Cyperaceae	Local	Wetlands	Not threatened	
<i>Carex wakatipu</i> agg.	HERBS MONOCOTYLEDONOUS	Cyperaceae	Occasional	Tussockland	Not threatened	
<i>Carmichaelia petriei</i>	DICOTYLEDONOUS TREES AND SHRUBS	Fabaceae	Rare	Gullies	Not threatened	Desert broom
<i>Carpha alpina</i>	HERBS MONOCOTYLEDONOUS	Cyperaceae	Local	Wetlands	Not threatened	
<i>Celmisia</i> (g) (CHR 274779; "rhizomatous")	HERBS DICOTYLEDONOUS	Asteraceae	Local	Wetlands	Not threatened	
<i>Celmisia argentea</i>	HERBS DICOTYLEDONOUS	Asteraceae	Local	CHR 607864. Wetlands	Not threatened	
<i>Celmisia argentea</i> X <i>C.</i> <i>semicordata</i>	0	Asteraceae	Rare	One plant in Teviot Swamp	Not threatened	
<i>Celmisia densiflora</i>	HERBS DICOTYLEDONOUS	Asteraceae	Local	Tops	Not threatened	

RELEASED UNDER THE OFFICIAL INFORMATION ACT

<i>Celmisia glandulosa</i> var. <i>glandulosa</i>	DICOTYLEDONOUS HERBS	Asteraceae	Local	Wetlands	Not threatened	
<i>Celmisia gracilentia</i> agg.	DICOTYLEDONOUS HERBS	Asteraceae	Occasional	Throughout	Not threatened	
<i>Celmisia graminifolia</i>	DICOTYLEDONOUS HERBS	Asteraceae	Local	Wetlands	Not threatened	
<i>Celmisia laricifolia</i>	DICOTYLEDONOUS HERBS	Asteraceae	Local	Snowbank	Not threatened	
<i>Celmisia lyallii</i>	DICOTYLEDONOUS HERBS	Asteraceae	Local	Throughout	Not threatened	false spaniard
<i>Celmisia prorepens</i>	DICOTYLEDONOUS HERBS	Asteraceae	Local	Wetlands	Not threatened	
<i>Celmisia semicordata</i> subsp. <i>aurigans</i>	DICOTYLEDONOUS HERBS	Asteraceae	Local	Higher elevations	Not threatened	
<i>Celmisia sessiliflorum</i> X <i>C. gracilentia</i> agg.? (= <i>C. linearis</i> J.B.Armst.)	DICOTYLEDONOUS HERBS	Asteraceae	Rare	Wetlands	Not threatened	
<i>Centrolepis ciliata</i>	MONOCOTYLEDONOUS HERBS	Centrolepidaceae	Local	Wetlands	Not threatened	
<i>Centrolepis pallida</i>	MONOCOTYLEDONOUS HERBS	Centrolepidaceae	Rare	Wetlands	Locally Notable	
<i>Cerastium fontanum</i> subsp. <i>vulgare</i>	DICOTYLEDONOUS HERBS	Caryophyllaceae	Occasional	Throughout	Exotic	mouse-ear chickweed
<i>Cerastium semidecandrum</i>	DICOTYLEDONOUS HERBS	Caryophyllaceae	Occasional	Tussockland	Exotic	little mouse-ear chickweed
<i>Chaerophyllum</i> (c) (CHR 469467; "bog")	DICOTYLEDONOUS HERBS	Apiaceae	Local	Wetlands	Not threatened	
<i>Chaerophyllum colensoi</i> agg.	DICOTYLEDONOUS HERBS	Apiaceae	Local	Hairy form. Wetlands	Not threatened	
<i>Chaerophyllum colensoi</i> agg.	DICOTYLEDONOUS HERBS	Apiaceae	Rare	Non-hairy form, Rock outcrop	Not threatened	
<i>Chaerophyllum ramosum</i>	DICOTYLEDONOUS HERBS	Apiaceae	Local	Tussockland	Not threatened	
<i>Chionochloa rigida</i> subsp. <i>rigida</i>	MONOCOTYLEDONOUS HERBS	Gramineae (Danthonieae)	Abundant	Tussockland	Not threatened	narrow-leaved snow-tussock
<i>Chionochloa rubra</i> subsp. <i>cuprea</i>	MONOCOTYLEDONOUS HERBS	Poaceae (Danthonieae)	Teviot	Johnson (1986)	Not threatened	copper tussock
<i>Chionochloa rubra</i> subsp. <i>cuprea</i> X <i>C. rigida</i> subsp. <i>rigida</i>	MONOCOTYLEDONOUS HERBS	Gramineae (Danthonieae)	Local	Wetlands	Not threatened	
<i>Cirsium vulgare</i>	DICOTYLEDONOUS HERBS	Asteraceae	Occasional	Lower altitudes	Exotic	Scotch thistle
<i>Clematis foetida</i>	DICOTYLEDONOUS LIANES & RELATED TRAILING PLANTS	Ranunculaceae	Rare	Lower altitudes	Not threatened	
<i>Clematis marata</i>	DICOTYLEDONOUS LIANES & RELATED TRAILING PLANTS	Ranunculaceae	Local	Lower altitudes	Not threatened	
<i>Colobanthus apetalus</i>	DICOTYLEDONOUS HERBS	Caryophyllaceae	Local	Wetlands	Not threatened	

RELEASED UNDER THE OFFICIAL INFORMATION ACT

<i>Colobanthus strictus</i>	DICOTYLEDONOUS HERBS	Caryophyllaceae	Occasional	Tussockland	Not threatened	
<i>Conium maculatum</i>	DICOTYLEDONOUS HERBS	Apiaceae	Local	Lower altitudes	Exotic	hemlock
<i>Coprosma atropurpurea</i>	DICOTYLEDONOUS TREES AND SHRUBS	Rubiaceae	Local	Wetlands	Not threatened	
<i>Coprosma cheesemanii</i>	DICOTYLEDONOUS TREES AND SHRUBS	Rubiaceae	Local	Rock outcrops	Not threatened	
<i>Coprosma crassifolia</i>	DICOTYLEDONOUS TREES AND SHRUBS	Rubiaceae	Local	Lower altitudes	Not threatened	
<i>Coprosma dumosa</i>	DICOTYLEDONOUS TREES AND SHRUBS	Rubiaceae	Rare	Gullies	Not threatened	
<i>Coprosma perpusilla</i> subsp. <i>perpusilla</i>	DICOTYLEDONOUS TREES AND SHRUBS	Rubiaceae	Local	Wetlands	Not threatened	creeping coprosma
<i>Coprosma petriei</i>	DICOTYLEDONOUS TREES AND SHRUBS	Rubiaceae	Teviot	Johnson (1986)	Not threatened	
<i>Coprosma propinqua</i> var. <i>propinqua</i>	DICOTYLEDONOUS TREES AND SHRUBS	Rubiaceae	Local	Gullies	Not threatened	
<i>Coprosma pumila</i>	DICOTYLEDONOUS TREES AND SHRUBS	Rubiaceae	Local	Damp sites	Not threatened	
<i>Coprosma rigida</i>	DICOTYLEDONOUS TREES AND SHRUBS	Rubiaceae	Local	Gullies	Not threatened	
<i>Coprosma rugosa</i>	DICOTYLEDONOUS TREES AND SHRUBS	Rubiaceae	Local	Shrublands	Not threatened	
<i>Coprosma tayloriae</i>	DICOTYLEDONOUS TREES AND SHRUBS	Rubiaceae	Local	Shrublands	Not threatened	
<i>Coprosma virescens</i>	DICOTYLEDONOUS TREES AND SHRUBS	Rubiaceae	Rare	Dry rock outcrops at low altitude	Regionally Significant	
<i>Cordyline australis</i>	MONOCOTYLEDONOUS TREES AND SHRUBS	Laxmanniaceae	Rare	Lower altitudes	Not threatened	cabbage tree, ti
<i>Corokia cotoneaster</i>	DICOTYLEDONOUS TREES AND SHRUBS	Escalloniaceae	Local	Gullies	Not threatened	corokia
<i>Cortaderia richardii</i>	MONOCOTYLEDONOUS HERBS	Gramineae (Cortaderiinae)	Local	Damp sites	Not threatened	South Island toetoe
<i>Craspedia incana</i>	DICOTYLEDONOUS HERBS	Asteraceae	Local	Tops	Not threatened	
<i>Craspedia</i> sp.	DICOTYLEDONOUS HERBS	Asteraceae	Local	CHR 607862. Teviot Swamp	Not threatened	
<i>Crassula colligata</i> subsp. <i>colligata</i>	DICOTYLEDONOUS HERBS	Crassulaceae	Local	Rock outcrops	Not threatened	
<i>Crepis capillaris</i>	DICOTYLEDONOUS HERBS	Asteraceae	Occasional	Throughout	Exotic	hawksbeard
<i>Cyathodes pumila</i>	DICOTYLEDONOUS TREES AND SHRUBS	Epacridaceae	Teviot	Johnson (1986)	Not threatened	

RELEASED UNDER THE OFFICIAL INFORMATION ACT

<i>Cystopteris tasmanica</i>	FERNS	Dryopteridaceae	Local	Overhangs	Not threatened	bladder fern
<i>Cytisus scoparius</i>	DICOTYLEDONOUS TREES AND SHRUBS	Fabaceae	Local	Lower altitudes	Exotic	broom
<i>Dactylis glomerata</i>	MONOCOTYLEDONOUS HERBS	Poeae	Local	Damp sites	Exotic	cocksfoot
<i>Deschampsia cespitosa</i>	MONOCOTYLEDONOUS HERBS	Gramineae (Aveninae)	Local	Fortification Creek	Declining	tufted hair-grass
<i>Deyeuxia aucklandica</i>	MONOCOTYLEDONOUS HERBS	Gramineae (Agrostidinae)	Rare	Rock outcrops	Not threatened	
<i>Deyeuxia avenoides</i>	MONOCOTYLEDONOUS HERBS	Gramineae (Agrostidinae)	Occasional	Tussockland	Not threatened	
<i>Deyeuxia youngii</i>	MONOCOTYLEDONOUS HERBS	Gramineae (Agrostidinae)	Rare	Rock outcrops	Naturally Uncommon	
<i>Dichelachne crinita</i>	MONOCOTYLEDONOUS HERBS	Gramineae (Agrostidinae)	Local	Rock outcrops	Not threatened	long-hair plume grass
<i>Dichondra repens</i> agg.	DICOTYLEDONOUS HERBS	Convolvulaceae	Rare	Lower altitudes	Not threatened	Mercury Bay weed
<i>Digitalis purpurea</i>	MONOCOTYLEDONOUS HERBS	Scrophulariaceae	Local	Lower altitudes	Exotic	foxglove
<i>Discaria toumatou</i>	DICOTYLEDONOUS TREES AND SHRUBS	Rhamnaceae	Occasional	Lower altitudes	Not threatened	matagouri
<i>Discaria toumatou</i>	DICOTYLEDONOUS TREES AND SHRUBS	Rhamnaceae	Rare	Lower altitudes	Not threatened	matagouri
<i>Dolichoglottis lyallii</i>	DICOTYLEDONOUS HERBS	Asteraceae	Rare	Bluffs	Not threatened	groundsel
<i>Donatia novae-zelandiae</i>	DICOTYLEDONOUS HERBS	Stylidiaceae	Local	Wetlands	Not threatened	
<i>Dracophyllum longifolium</i>	DICOTYLEDONOUS TREES AND SHRUBS	Epacridaceae	Local	Gullies	Not threatened	inaka
<i>Dracophyllum politum</i>	DICOTYLEDONOUS TREES AND SHRUBS	Epacridaceae	Local	Wetlands	Not threatened	
<i>Dracophyllum prostratum</i>	DICOTYLEDONOUS TREES AND SHRUBS	Epacridaceae	Local	Ridgetops	Not threatened	
<i>Dracophyllum rosmarinifolium</i>	DICOTYLEDONOUS TREES AND SHRUBS	Epacridaceae	Local	Wetlands	Not threatened	turpentine scrub
<i>Drosera arcturi</i>	DICOTYLEDONOUS HERBS	Droseraceae	Local	Wetlands	Not threatened	sundew
<i>Drosera spatulata</i>	DICOTYLEDONOUS HERBS	Droseraceae	Local	Wetlands	Not threatened	sundew
<i>Einadia allanii</i>	DICOTYLEDONOUS HERBS	Chenopodiaceae	Local	Lower altitudes	Naturally Uncommon	parahia
<i>Elatine gratioloides</i>	DICOTYLEDONOUS HERBS	Elatinaceae	Rare	Wetlands	Regionally Significant	
<i>Eleocharis acuta</i>	MONOCOTYLEDONOUS HERBS	Cyperaceae	Rare	Lower altitudes	Not threatened	sharp spike-sedge

RELEASED UNDER THE OFFICIAL INFORMATION ACT

<i>Eleocharis gracilis</i>	MONOCOTYLEDONOUS HERBS	Cyperaceae	Local	Ephemerally wet areas	Not threatened	slender spike- sedge
<i>Elymus solandri</i>	MONOCOTYLEDONOUS HERBS	Gramineae (Hordeae)	Rare	Tussockland	Not threatened	
<i>Epilobium alsinoides</i>	DICOTYLEDONOUS HERBS	Onagraceae	Local	Wetlands	Not threatened	
<i>Epilobium atriplicifolium</i>	DICOTYLEDONOUS HERBS	Onagraceae	Local	Wetlands	Not threatened	
<i>Epilobium brunnescens</i>	DICOTYLEDONOUS HERBS	Onagraceae	Local	Snowbank	Not threatened	
<i>Epilobium chionanthum</i>	DICOTYLEDONOUS HERBS	Onagraceae	Local	Wetlands	Not threatened	marsh willowherb
<i>Epilobium chlorifolium</i>	DICOTYLEDONOUS HERBS	Onagraceae	Local	Gullies	Not threatened	mountain willowherb
<i>Epilobium komarovianum</i>	DICOTYLEDONOUS HERBS	Onagraceae	Local	Damp sites	Not threatened	
<i>Epilobium macropus</i>	DICOTYLEDONOUS HERBS	Onagraceae	Local	CHR 607863. Damp sites	Not threatened	
<i>Epilobium microphyllum</i>	DICOTYLEDONOUS HERBS	Onagraceae	Rare	Gravels	Not threatened	
<i>Epilobium pubens</i>	DICOTYLEDONOUS HERBS	Onagraceae	Rare	Bluffs	Not threatened	
<i>Epilobium rotundifolium</i>	DICOTYLEDONOUS HERBS	Onagraceae	Local	Gullies	Not threatened	
<i>Erodium cicutarium</i>	DICOTYLEDONOUS HERBS	Geraniaceae	Occasional	Throughout	Exotic	storksbill
<i>Euchiton audax</i>	DICOTYLEDONOUS HERBS	Asteraceae	Rare	Tussockland	Not threatened	
<i>Euchiton delicatus</i>	DICOTYLEDONOUS HERBS	Asteraceae	Local	Rock outcrops	Not threatened	
<i>Euchiton lateralis</i>	DICOTYLEDONOUS HERBS	Asteraceae	Local	CHR 607870. Wetlands	Not threatened	
<i>Euchiton limosus</i>	DICOTYLEDONOUS HERBS	Asteraceae	Local	Gullies	Not threatened	creeping cudweed
<i>Euchiton paludosus</i>	DICOTYLEDONOUS HERBS	Asteraceae	Rare	Damp sites	Naturally Uncommon	
<i>Euchiton polylepis</i>	DICOTYLEDONOUS HERBS	Asteraceae	Local	Damp sites	Naturally Uncommon	
<i>Euchiton traversii</i>	DICOTYLEDONOUS HERBS	Asteraceae	Local	Damp sites	Not threatened	
<i>Euphrasia dyeri</i>	DICOTYLEDONOUS HERBS	Orobanchaceae	Local	Wetlands	Not threatened	
<i>Euphrasia petriei</i> agg. (W. Otago, Fiordland form with small flowers and glabrous leaves)	0	Orobanchaceae	Local	Tussockland	Not threatened	
<i>Euphrasia zelandica</i> (small flower)	0	Orobanchaceae	Local	Ridgetops	Not threatened	
<i>Festuca filiformis</i>	MONOCOTYLEDONOUS HERBS	Poeae	Local	Tussockland	Exotic	
<i>Festuca madida</i>	MONOCOTYLEDONOUS HERBS	Poaceaea (Poeae)	Rare	Tussockland	Not threatened	
<i>Festuca novae-zelandiae</i>	MONOCOTYLEDONOUS	Gramineae (Poeae)	Common	Throughout	Not threatened	hard tussock

RELEASED UNDER THE OFFICIAL INFORMATION ACT

<i>Festuca rubra</i> subsp.	HERBS MONOCOTYLEDONOUS HERBS	Poeae	Occasional	Throughout	Exotic	red fescue
<i>Festuca rubra</i> subsp. <i>rubra</i>	0	Poeae	Local	Alpine form. Wetlands	Exotic	red fescue
<i>Ficinia nodosa</i>	MONOCOTYLEDONOUS HERBS	Cyperaceae	Local	Damp sites	Not threatened	knobby clubrush
<i>Forstera tenella</i>	DICOTYLEDONOUS HERBS	Stylidiaceae	Occasional	Tussockland	Not Threatened	
<i>Fuchsia perscandens</i>	DICOTYLEDONOUS LIANES & RELATED TRAILING PLANTS	Onagraceae			Locally Notable	creeping fuchsia
<i>Gaimardia setacea</i>	MONOCOTYLEDONOUS HERBS	Centrolepidaceae	Local	Wetlands	Not threatened	
<i>Galium</i> (b) (CHR 469914; aff. <i>G. perpusillum</i> ; "lacustrine")	DICOTYLEDONOUS HERBS	Rubiaceae	Local	Ephemerally wet areas	Not threatened	
<i>Galium aparine</i>	DICOTYLEDONOUS HERBS	Rubiaceae	Occasional	Lower altitudes	Exotic	cleavers
<i>Galium perpusillum</i>	DICOTYLEDONOUS HERBS	Rubiaceae	Local	Rock outcrops	Not threatened	
<i>Gaultheria</i> (a) (<i>G.</i> <i>depressa</i> var. <i>novae-</i> <i>zelandiae</i>)	DICOTYLEDONOUS TREES AND SHRUBS	Ericaceae	Teviot	Johnson (1986)	Not threatened	snowberry
<i>Gaultheria antipoda</i>	DICOTYLEDONOUS TREES AND SHRUBS	Ericaceae	Local	Gullies	Not threatened	snowberry
<i>Gaultheria crassa</i>	DICOTYLEDONOUS TREES AND SHRUBS	Ericaceae	Local	Shrublands	Not threatened	snowberry
<i>Gaultheria depressa</i> s.s.	DICOTYLEDONOUS TREES AND SHRUBS	Ericaceae	Local	Throughout	Not threatened	snowberry
<i>Gaultheria macrostigma</i>	DICOTYLEDONOUS TREES AND SHRUBS	Ericaceae	Local	Tussockland	Not threatened	prostrate snowberry
<i>Gaultheria nubicola</i>	DICOTYLEDONOUS TREES AND SHRUBS	Ericaceae	Local	Tops	Not threatened	
<i>Gaultheria parvula</i>	DICOTYLEDONOUS TREES AND SHRUBS	Ericaceae	Local	Wetlands	Not threatened	
<i>Gentianella amabilis</i>	DICOTYLEDONOUS HERBS	Gentianaceae	Local	Wetlands	Not threatened	
<i>Gentianella bellidifolia</i>	DICOTYLEDONOUS HERBS	Gentianaceae	Common	Throughout	Not threatened	
<i>Gentianella grisebachii</i>	DICOTYLEDONOUS HERBS	Gentianaceae	Local	Two forms present - early- flowering delicate form (near <i>G.</i> <i>lilliputiana</i> in	Not threatened	

				dimensions: CHR 607860) and later flowering normal form. Co-occur in wetlands		
<i>Geranium</i> (d) (aff. <i>G. microphyllum</i> ; "mainland")	DICOTYLEDONOUS HERBS	Geraniaceae	Occasional	Tussockland	Not threatened	
<i>Geranium brevicaule</i>	DICOTYLEDONOUS HERBS	Geraniaceae	Occasional	Tussockland	Not threatened	
<i>Geranium molle</i>	DICOTYLEDONOUS HERBS	Geraniaceae	Rare	Lower altitudes	Exotic	dove's foot cranesbill
<i>Geum cockaynei</i>	DICOTYLEDONOUS HERBS	Rosaceae	Local	Rock outcrops	Not threatened	
<i>Geum leiospermum</i>	DICOTYLEDONOUS HERBS	Rosaceae	Local	Tops	Not threatened	
<i>Gingidia baxterae</i>	DICOTYLEDONOUS HERBS	Apiaceae	Local	Tops	Data Deficient	
<i>Gingidia decipiens</i>	DICOTYLEDONOUS HERBS	Apiaceae	Teviot	Johnson (1986)	Not threatened	
<i>Glyceria fluitans</i>	MONOCOTYLEDONOUS HERBS	Meliceae	Rare	Wetlands	Exotic	floating sweet grass
<i>Gonocarpus incanus</i>	DICOTYLEDONOUS HERBS	Haloragaceae	Local	Wetlands	Not threatened	
<i>Grammitis poeppigiana</i>	FERNS	Grammitidaceae	Local	Bluffs	Not threatened	
<i>Griselinia littoralis</i>	DICOTYLEDONOUS TREES AND SHRUBS	Griselinaceae	Rare	Lower altitudes	Not threatened	broadleaf
<i>Gunnera monoica</i>	DICOTYLEDONOUS HERBS	Gunneraceae	Local	Damp sites	Not threatened	
<i>Gunnera prorepens</i>	DICOTYLEDONOUS HERBS	Gunneraceae	Local	Wetlands	Not threatened	
<i>Halocarpus bidwillii</i>	GYMNOSPERM TREES AND SHRUBS	Podocarpaceae	Local	Wetlands	Regionally Significant	bog pine
<i>Hebe anomala</i>	DICOTYLEDONOUS TREES AND SHRUBS	Plantaginaceae	Local	Patches along streams and on peaks	Not threatened	
<i>Hebe hectorii</i> subsp. <i>hectorii</i>	DICOTYLEDONOUS TREES AND SHRUBS	Plantaginaceae	Local	Tops	Not threatened	
<i>Hebe imbricata</i>	DICOTYLEDONOUS TREES AND SHRUBS	Plantaginaceae	Local	Tops	Not threatened	
<i>Hebe lycopodioides</i>	DICOTYLEDONOUS TREES AND SHRUBS	Plantaginaceae	Local	Tops	Not threatened	
<i>Hebe odora</i>	DICOTYLEDONOUS TREES AND SHRUBS	Plantaginaceae	Local	Wetlands	Not threatened	
<i>Hebe pauciramosa</i>	DICOTYLEDONOUS TREES AND SHRUBS	Plantaginaceae	Local	Seep	Not threatened	

RELEASED UNDER THE OFFICIAL INFORMATION ACT

<i>Hebe propinqua</i>	DICOTYLEDONOUS TREES AND SHRUBS	Plantaginaceae	Local		Not threatened	
<i>Hebe rakaiensis</i>	DICOTYLEDONOUS TREES AND SHRUBS	Plantaginaceae	Rare	Gullies	Not threatened	
<i>Hebe salicifolia</i>	DICOTYLEDONOUS TREES AND SHRUBS	Plantaginaceae	Local	Gullies	Not threatened	koromiko
<i>Helichrysum filicaule</i>	DICOTYLEDONOUS HERBS	Asteraceae	Occasional	Tussockland	Not threatened	
<i>Herpolirion novae-zeelandiae</i>	MONOCOTYLEDONOUS HERBS	Liliaceae	Local	Damp sites	Not threatened	grass lily
<i>Hieracium lepidulum</i>	DICOTYLEDONOUS HERBS	Asteraceae	Occasional	Throughout	Exotic	tussock hawkweed
<i>Hieracium pilosella</i> subsp.	DICOTYLEDONOUS HERBS	Asteraceae	Common	Throughout	Exotic	mouse-eared hawkweed
<i>Hieracium praealtum</i>	DICOTYLEDONOUS HERBS	Asteraceae	Common	Tussockland	Exotic	king devil
<i>Hierochloa redolens</i>	MONOCOTYLEDONOUS HERBS	Gramineae (Phalaridinae)	Local	Gullies	Not threatened	scented holy grass
<i>Histiopteris incisa</i>	FERNS	Dennstaedtiaceae	Local		Not threatened	water fern
<i>Hoheria lyallii</i>	DICOTYLEDONOUS TREES AND SHRUBS	Malvaceae	Rare	Gullies	Not threatened	mountain ribbonwood
<i>Holcus lanatus</i>	MONOCOTYLEDONOUS HERBS	Aveninae	Occasional	Damp sites	Exotic	Yorkshire fog
<i>Huperzia australiana</i>	PSILOPSIDS, LYCOPODS & QUILLWORTS	Lycopodiaceae	Rare	Bluffs	Not threatened	
<i>Hydrocotyle (a) (H. novae-zeelandiae var. montana)</i>	DICOTYLEDONOUS HERBS	Apiaceae	Occasional	Tussockland	Not threatened	
<i>Hydrocotyle microphylla</i>	DICOTYLEDONOUS HERBS	Apiaceae	Teviot	Johnson (1986)	Not threatened	
<i>Hydrocotyle sulcata</i>	DICOTYLEDONOUS HERBS	Apiaceae	Local	Wetlands	Not threatened	
<i>Hymenochilus tanypodus</i>	MONOCOTYLEDONOUS HERBS	Orchidaceae	Occasional	Tussockland	Not threatened	
<i>Hypericum pusillum</i>	DICOTYLEDONOUS HERBS	Clusiaceae	Rare	Tussockland	Not threatened	
<i>Hypericum rubicundulum</i>	DICOTYLEDONOUS HERBS	Clusiaceae	Local	Teviot (Johnson 1986) and Canadian Flats	Naturally Uncommon	
<i>Hypochoeris radicata</i>	DICOTYLEDONOUS HERBS	Asteraceae	Occasional	Throughout	Exotic	catsear
<i>Hypolepis ambigua</i>	FERNS	Dennstaedtiaceae	Rare	Talla Burn	Not threatened	
<i>Hypolepis millefolium</i>	FERNS	Dennstaedtiaceae	Occasional	Throughout	Not threatened	thousand-leaved fern
<i>Isolepis aucklandica</i>	MONOCOTYLEDONOUS HERBS	Cyperaceae	Local	Wetlands	Not threatened	

RELEASED UNDER THE OFFICIAL INFORMATION ACT

<i>Isolepis basilaris</i>	MONOCOTYLEDONOUS HERBS	Cyperaceae	Local	Fortification Creek	Nationally Endangered	pygmy clubrush
<i>Isolepis inundata</i>	MONOCOTYLEDONOUS HERBS	Cyperaceae	Local	Gullies	Not threatened	
<i>Juncus antarcticus</i>	MONOCOTYLEDONOUS HERBS	Juncaceae	Local	Wetlands	Not threatened	
<i>Juncus articulatus</i>	MONOCOTYLEDONOUS HERBS	Juncaceae	Local	Wetlands	Exotic	jointed rush
<i>Juncus bufonius</i> var. <i>bufonius</i>	MONOCOTYLEDONOUS HERBS	Juncaceae	Local	Lower altitudes	Exotic	toad rush
<i>Juncus edgariae</i>	MONOCOTYLEDONOUS HERBS	Juncaceae	Local	Damp sites	Not threatened	
<i>Juncus effusus</i>	MONOCOTYLEDONOUS HERBS	Juncaceae	Local	Wetlands	Exotic	soft rush
<i>Juncus imbricatus</i> subsp. <i>chamissonis</i>	MONOCOTYLEDONOUS HERBS	Juncaceae	Rare	ID uncertain (CHR 607872). May be <i>J.</i> <i>capitatus</i> . By track in tussockland	Exotic	
<i>Juncus novae-zealandiae</i>	MONOCOTYLEDONOUS HERBS	Juncaceae	Local	Wetlands	Not threatened	
<i>Juncus pauciflorus</i>	MONOCOTYLEDONOUS HERBS	Juncaceae	Rare	Wetlands	Declining	
<i>Juncus pusillus</i>	MONOCOTYLEDONOUS HERBS	Juncaceae	Local	Wetlands	Naturally Uncommon	
<i>Kelleria croizatii</i>	DICOTYLEDONOUS HERBS	Thymelaeaceae	Local	Tops	Not threatened	
<i>Kelleria dieffenbachii</i>	DICOTYLEDONOUS HERBS	Thymelaeaceae	Local	Tussockland	Not threatened	
<i>Kelleria laxa</i>	DICOTYLEDONOUS HERBS	Thymelaeaceae	Teviot	Johnson (1986)	Not threatened	
<i>Kelleria paludosa</i>	DICOTYLEDONOUS HERBS	Thymelaeaceae	Local	Wetlands	Not threatened	
<i>Kirkianella novae- zealandiae</i>	DICOTYLEDONOUS HERBS	Asteraceae	Local	Tussockland	Nationally Vulnerable	
<i>Kunzea ericoides</i> s.l.	DICOTYLEDONOUS TREES AND SHRUBS	Myrtaceae	Common	Lower altitudes	Not threatened	kanuka
<i>Lachnagrostis filliformis</i>	MONOCOTYLEDONOUS HERBS	Poaceaea (Agrostidinae)	Teviot	Johnson (1986)	Not threatened	New Zealand wind grass
<i>Lagenifera cuneata</i>	DICOTYLEDONOUS HERBS	Asteraceae	Local	CHR 607886. Rock outcrops	Not threatened	
<i>Lagenifera pumila</i>	DICOTYLEDONOUS HERBS	Asteraceae	Rare	Lower altitudes	Not threatened	
<i>Lagenifera strangulata</i>	DICOTYLEDONOUS HERBS	Asteraceae	Local	Beech forest	Not threatened	
<i>Leptecophylla juniperina</i>	DICOTYLEDONOUS TREES	Epacridaceae	Local	Wetlands	Not threatened	prickly

RELEASED UNDER THE OFFICIAL INFORMATION ACT

s.l.	AND SHRUBS					mingimingi
<i>Leptinella</i> (f) (; "seep")	DICOTYLEDONOUS HERBS	Asteraceae	Local	Wetlands	Not threatened	
<i>Leptinella maniototo</i>	DICOTYLEDONOUS HERBS	Asteraceae	Rare	Ephemerally wet areas	Data Deficient	
<i>Leptinella pectinata</i> subsp. <i>villosa</i>	DICOTYLEDONOUS HERBS	Asteraceae	Local	Throughout	Not threatened	
<i>Leptinella serrulata</i>	DICOTYLEDONOUS HERBS	Asteraceae	Rare	Tussockland	Naturally Uncommon	dryland button daisy
<i>Leptospermum scoparium</i> agg.	DICOTYLEDONOUS TREES AND SHRUBS	Myrtaceae	Local	Lower altitudes	Not threatened	manuka
<i>Leucopogon fraseri</i> complex (mountain ecotype)	DICOTYLEDONOUS TREES AND SHRUBS	Ericaceae	Common	Throughout	Not threatened	
<i>Leycesteria formosa</i>	DICOTYLEDONOUS TREES AND SHRUBS	Caprifoliaceae	Local	Shrublands at low altitude	Exotic	Himalayan honeysuckle
<i>Limosella ruthiana</i>	DICOTYLEDONOUS HERBS	Plantaginaceae	Local	Fortification Creek	Not threatened	
<i>Linum catharticum</i>	DICOTYLEDONOUS HERBS	Linaceae	Rare	Bluffs	Exotic	purging flax
<i>Lobelia angulata</i>	DICOTYLEDONOUS HERBS	Lobeliaceae	Local	Damp sites	Not threatened	
<i>Lobelia ionantha</i>	DICOTYLEDONOUS HERBS	Lobeliaceae	Local	Damp sites	Declining	
<i>Lobelia macrodon</i>	DICOTYLEDONOUS HERBS	Lobeliaceae	Occasional	Throughout	Not threatened	
<i>Lobelia perpusilla</i>	DICOTYLEDONOUS HERBS	Lobeliaceae	Local	Moist sites	Naturally Uncommon	
<i>Lolium perenne</i>	MONOCOTYLEDONOUS HERBS	Poeae	Occasional	Exotic grassland	Exotic	perennial ryegrass
<i>Lotus pedunculatus</i>	DICOTYLEDONOUS HERBS	Fabaceae	Rare	Lower altitudes	Exotic	lotus
<i>Luzula</i> (b) (<i>L. crinita</i> var. <i>petrieana</i>)	MONOCOTYLEDONOUS HERBS	Juncaceae	Rare	Tops	Not threatened	
<i>Luzula banksiana</i> var. <i>migrata</i>	MONOCOTYLEDONOUS HERBS	Juncaceae	Local	Bluffs	Not threatened	
<i>Luzula banksiana</i> var. <i>rhadina</i>	MONOCOTYLEDONOUS HERBS	Juncaceae	Rare	Ridgetops	Not threatened	woodrush
<i>Luzula leptophylla</i>	MONOCOTYLEDONOUS HERBS	Juncaceae	Local	Wetlands	Not threatened	woodrush
<i>Luzula picta</i> var. 0	0	Juncaceae	Local	Bluffs	Not threatened	woodrush
<i>Luzula rufa</i>	MONOCOTYLEDONOUS HERBS	Juncaceae	Occasional	Tussockland	Not threatened	woodrush
<i>Luzula rufa</i> (form with white bractlets giving head a pale appearance)	MONOCOTYLEDONOUS HERBS	Juncaceae	Rare	Damp sites	Not threatened	woodrush

RELEASED UNDER THE OFFICIAL INFORMATION ACT

<i>Luzula subclavata</i>	MONOCOTYLEDONOUS HERBS	Juncaceae	Rare	Bluffs	Not threatened	
<i>Lycopodium fastigiatum</i>	PSILOPSIDS, LYCOPODS & QUILLWORTS	Lycopodiaceae	Occasional	Tussockland	Not threatened	mountain clubmoss
<i>Lycopodium scariosum</i>	PSILOPSIDS, LYCOPODS & QUILLWORTS	Lycopodiaceae	Local	Lower altitudes	Not threatened	
<i>Malva neglecta</i>	DICOTYLEDONOUS HERBS	Malvaceae	Local	Lower altitudes	Exotic	dwarf mallow
<i>Marrubium vulgare</i>	DICOTYLEDONOUS HERBS	Lamiaceae	Rare	Lower altitudes	Exotic	horehound
<i>Melicytus</i> aff. <i>alpinus</i> (erect)	DICOTYLEDONOUS TREES AND SHRUBS	Violaceae	Rare	Lower altitudes	Not threatened	porcupine shrub
<i>Melicytus</i> aff. <i>alpinus</i> (normal Otago form)	DICOTYLEDONOUS TREES AND SHRUBS	Violaceae	Occasional	Throughout	Not threatened	porcupine shrub
<i>Mentha cunninghamii</i>	DICOTYLEDONOUS HERBS	Lamiaceae	Rare	Overhangs	Not threatened	NZ mint
<i>Microseris scapigera</i> var.	DICOTYLEDONOUS HERBS	Asteraceae	Local	Damp sites	Not threatened	
<i>Microsorium pustulatum</i>	FERNS	Polypodiaceae	Local	Beech forest	Not threatened	hound's tongue fern
<i>Microtis unifolia</i> agg.	MONOCOTYLEDONOUS HERBS	Orchidaceae	Occasional	Tussockland	Not threatened	onion orchid
<i>Mimulus moschatus</i>	DICOTYLEDONOUS HERBS	Scrophulariaceae	Rare	Wetlands	Exotic	musk
<i>Montia angustifolia</i>	DICOTYLEDONOUS HERBS	Portulacaceae	Rare	Ephemerally wet areas	Naturally Uncommon	
<i>Montia fontana</i> subsp. <i>montana</i>	DICOTYLEDONOUS HERBS	Portulacaceae	Local	Wetlands	Not threatened	blinks
<i>Montia sessiliflora</i>	DICOTYLEDONOUS HERBS	Portulacaceae	Local	Damp sites	Not threatened	
<i>Muehlenbeckia australis</i>	DICOTYLEDONOUS LIANES & RELATED TRAILING PLANTS	Polygonaceae	Occasional	Lower altitudes	Not threatened	large-leaved pohuehue
<i>Muehlenbeckia axillaris</i>	DICOTYLEDONOUS LIANES & RELATED TRAILING PLANTS	Polygonaceae	Occasional	Tussockland	Not threatened	
<i>Muehlenbeckia complexa</i> agg.	DICOTYLEDONOUS LIANES & RELATED TRAILING PLANTS	Polygonaceae	Occasional	Throughout	Not threatened	small-leaved pohuehue
<i>Mycelis muralis</i>	DICOTYLEDONOUS HERBS	Asteraceae	Local	Lower altitudes	Exotic	wall lettuce
<i>Myosotis</i> "pygmaea" agg. (form intermediate between "drucei" s.s. and "pygmaea" s.s., Lvs green with brown base, nonwaxy, hairs c.1mm, Central Otago mid- altitude)	DICOTYLEDONOUS HERBS	Boraginaceae	Local	Rock outcrops	Not threatened	
<i>Myosotis</i> (aa) (<i>M.</i>	DICOTYLEDONOUS HERBS	Boraginaceae	Teviot	Johnson (1986)	Regionally	Druce's forget-

RELEASED UNDER THE OFFICIAL INFORMATION ACT

<i>pygmaea</i> var. <i>drucei</i>) <i>Myosotis</i> (hh) (AK 7570; aff. <i>M. tenericaulis</i> ; Garvie)	DICOTYLEDONOUS HERBS	Boraginaceae	Rare	Wetlands	Significant Naturally Uncommon	me-not
<i>Myosotis</i> (ii) (AK 231051; aff. <i>M. australis</i> ; "small white")	DICOTYLEDONOUS HERBS	Boraginaceae	Rare	Overhangs	Naturally Uncommon	
<i>Myosotis</i> (s) (CHR 572827; aff. <i>M. australis</i> ; Lammerlaw)	DICOTYLEDONOUS HERBS	Boraginaceae	Rare	Rock outcrops	Data Deficient	
<i>Myosotis discolor</i>	DICOTYLEDONOUS HERBS	Boraginaceae	Local	Tussockland	Exotic	grassland
<i>Myosotis laxa</i>	DICOTYLEDONOUS HERBS	Boraginaceae	Local	Wetlands	Exotic	forget-me-not water forget- me-not
<i>Myosotis</i> sp. undetermined (CHR 586012; cf. <i>M. forsteri</i> ; "overhang")	DICOTYLEDONOUS HERBS	Boraginaceae	Rare	Overhangs	Regionally Significant	
<i>Myosurus minimus</i> subsp. <i>novaezelandiae</i>	DICOTYLEDONOUS HERBS	Ranunculaceae	Rare	Stock camp	Nationally Critical	mousetail
<i>Myriophyllum propinquum</i>	DICOTYLEDONOUS HERBS	Haloragaceae	Local	Wetlands	Not threatened	
<i>Myriophyllum triphyllum</i>	DICOTYLEDONOUS HERBS	Haloragaceae	Local	Wetlands	Not threatened	
<i>Myrsine divaricata</i>	DICOTYLEDONOUS TREES AND SHRUBS	Myrsinaceae			Not threatened	weeping matipo
<i>Myrsine nummularia</i>	DICOTYLEDONOUS TREES AND SHRUBS	Myrsinaceae	Local	Tops	Not threatened	
<i>Nematoceras macranthum</i>	MONOCOTYLEDONOUS HERBS	Orchidaceae	Local	Gullies	Not threatened	silver-back spider orchid
<i>Nematoceras trilobum</i> agg.	MONOCOTYLEDONOUS HERBS	Orchidaceae	Local	Seep	Not threatened	
<i>Nertera balfouriana</i>	DICOTYLEDONOUS HERBS	Rubiaceae	Rare	Wetlands	Not threatened	
<i>Nertera depressa</i>	DICOTYLEDONOUS HERBS	Rubiaceae	Local	Gullies	Not threatened	
<i>Nothofagus menziesii</i>	DICOTYLEDONOUS TREES AND SHRUBS	Nothofagaceae	Local	Talla Burn	Not threatened	silver beech
<i>Olearia arborescens</i>	DICOTYLEDONOUS TREES AND SHRUBS	Asteraceae	Rare	Lower altitudes	Not threatened	
<i>Olearia bullata</i>	DICOTYLEDONOUS TREES AND SHRUBS	Asteraceae	Local	Gullies	Not threatened	
<i>Olearia cymbifolia</i>	DICOTYLEDONOUS TREES AND SHRUBS	Asteraceae	Rare	Shrublands	Not threatened	

RELEASED UNDER THE OFFICIAL INFORMATION ACT

<i>Olearia lineata</i>	DICOTYLEDONOUS TREES AND SHRUBS	Asteraceae	Rare	Gullies	Declining	
<i>Olearia odorata</i>	DICOTYLEDONOUS TREES AND SHRUBS	Asteraceae	Rare	Gullies	Not threatened	
<i>Oreobolus impar</i>	MONOCOTYLEDONOUS HERBS	Cyperaceae	Rare	Wetlands	Not threatened	
<i>Oreobolus pectinatus</i>	MONOCOTYLEDONOUS HERBS	Cyperaceae	Local	Wetlands	Not threatened	comb sedge
<i>Oreobolus pectinatus</i>	MONOCOTYLEDONOUS HERBS	Cyperaceae	Common	Wetlands	Not threatened	comb sedge
<i>Oreobolus strictus</i>	MONOCOTYLEDONOUS HERBS	Cyperaceae	Local	Tops	Not threatened	
<i>Oreostylidium subulatum</i>	DICOTYLEDONOUS HERBS	Stylidiaceae	Local	Damp sites	Not threatened	
<i>Oreostylidium subulatum</i>	DICOTYLEDONOUS HERBS	Stylidiaceae	Local	Wetlands	Not threatened	
<i>Ourisia caespitosa</i>	DICOTYLEDONOUS HERBS	Plantaginaceae	Local	Damp sites	Not threatened	
<i>Oxalis exilis</i>	DICOTYLEDONOUS HERBS	Oxalidaceae	Local	Rock outcrops	Not threatened	creeping oxalis
<i>Oxalis magellanica</i> "f. glaucous"	DICOTYLEDONOUS HERBS	Oxalidaceae	Local	Tops	Not threatened	native oxalis
<i>Ozothamnus vauvilliersii</i>	DICOTYLEDONOUS TREES AND SHRUBS	Asteraceae	Rare	Tussockland	Not threatened	tauhinu
<i>Pachycladon cheesemanii</i>	DICOTYLEDONOUS HERBS	Brassicaceae	Rare	Taieri Rapids	Nationally Vulnerable	
<i>Pachycladon novae-zelandiae</i>	DICOTYLEDONOUS HERBS	Brassicaceae	Local	Bluffs	Not threatened	
<i>Parsonsia heterophylla</i>	DICOTYLEDONOUS LIANES & RELATED TRAILING PLANTS	Apocynaceae	Local	Shrublands at low altitude	Not threatened	native jasmine
<i>Pelargonium inodorum</i>	DICOTYLEDONOUS HERBS	Geraniaceae	Rare	Lower altitudes	Regionally Significant	
<i>Pellaea rotundifolia</i>	FERNS	Pteridaceae	Local	Rock outcrops at low altitude	Not threatened	
<i>Pentachondra pumila</i>	DICOTYLEDONOUS TREES AND SHRUBS	Epacridaceae	Local	Tussockland	Not threatened	
<i>Phleum pratense</i>		Agrostidinae	Rare	Throughout	Exotic	timothy
<i>Phormium cookianum</i> subsp.	MONOCOTYLEDONOUS HERBS	Hemerocallidaceae	Local	Gullies	Not threatened	mountain flax
<i>Phyllachne colensoi</i>	DICOTYLEDONOUS HERBS	Stylidiaceae	Local	Wetlands	Not threatened	
<i>Phyllachne rubra</i>	DICOTYLEDONOUS HERBS	Stylidiaceae	Rare	Ridgetops	Not threatened	
<i>Phyllocladus alpinus</i>	GYMNOSPERM TREES AND SHRUBS	Phyllocladaceae	Rare	Recorded by Carter (1994)	Locally Notable	

RELEASED UNDER THE OFFICIAL INFORMATION ACT

<i>Pimelea oreophila</i>	DICOTYLEDONOUS TREES AND SHRUBS	Thymelaeaceae	Occasional	Tussockland	Not threatened	alpine daphne
<i>Pimelea oreophila</i> (<i>P. prostrata</i> -like but fruit orange)	DICOTYLEDONOUS TREES AND SHRUBS	Thymeleaceae	Local	Tops	Not threatened	
<i>Pinus radiata</i>	GYMNOSPERM TREES AND SHRUBS	Pinaceae	Rare	Lower altitudes	Exotic	radiata pine
<i>Plantago lanceolata</i>	DICOTYLEDONOUS HERBS	Plantaginaceae	Occasional	Lower altitudes	Exotic	narrow-leaved plantain
<i>Plantago lanigera</i>	DICOTYLEDONOUS HERBS	Plantaginaceae	Local	Wetlands	Not threatened	hairy swamp plantain
<i>Plantago major</i> subsp. <i>major</i>	DICOTYLEDONOUS HERBS	Plantaginaceae	Local	Lower altitudes	Exotic	broad-leaved plantain
<i>Plantago novae-zelandiae</i>	DICOTYLEDONOUS HERBS	Plantaginaceae	Local	Wetlands	Not threatened	
<i>Plantago triandra</i>	DICOTYLEDONOUS HERBS	Plantaginaceae	Local	Wetlands	Not threatened	
<i>Plantago uniflora</i>	DICOTYLEDONOUS HERBS	Plantaginaceae	Teviot	Johnson (1986)	Not threatened	
<i>Poa annua</i>	MONOCOTYLEDONOUS HERBS	Gramineae (Poeae)	Local	Damp sites	Exotic	annual poa
<i>Poa breviglumis</i>	MONOCOTYLEDONOUS HERBS	Gramineae (Poeae)	Local	Rock outcrops	Not threatened	
<i>Poa cita</i> agg.	MONOCOTYLEDONOUS HERBS	Gramineae (Poeae)	Occasional	Damp sites	Not threatened	silver tussock
<i>Poa colensoi</i> (small tussock)	MONOCOTYLEDONOUS HERBS	Gramineae (Poeae)	Common	Tussockland	Not threatened	blue tussock
<i>Poa imbecilla</i>	MONOCOTYLEDONOUS HERBS	Gramineae (Poeae)	Local	Rock outcrops	Not threatened	
<i>Poa kirkii</i>	MONOCOTYLEDONOUS HERBS	Gramineae (Poeae)	Local	Bluffs	Not threatened	
<i>Poa maniototo</i>	MONOCOTYLEDONOUS HERBS	Gramineae (Poeae)	Local		Not threatened	desert poa
<i>Poa matthewsii</i>	MONOCOTYLEDONOUS HERBS	Poaceaea (Poeae)	Local	Bluffs	Not threatened	
<i>Poa pratense</i>	MONOCOTYLEDONOUS HERBS	Gramineae (Poeae)	Local	Wetlands	Exotic	Kentucky bluegrass
<i>Podocarpus hallii</i>	GYMNOSPERM TREES AND SHRUBS	Podocarpaceae	Rare	Lower altitudes	Not threatened	Hall's totara
<i>Polycarpon tetraphyllum</i>	DICOTYLEDONOUS HERBS	Caryophyllaceae	Local	Lower altitudes	Exotic	allseed
<i>Polystichum cystostegia</i>	FERNS	Dryopteridaceae	Rare	Snowbank	Not threatened	alpine shield fern
<i>Polystichum</i>	FERNS	Dryopteridaceae	Local	Dry rock	Not threatened	

RELEASED UNDER THE OFFICIAL INFORMATION ACT

<i>neozelandicum</i> subsp. <i>zerophyllum</i> <i>Polystichum vestitum</i>	FERNS	Dryopteridaceae	Local	outcrops at low altitude Gullies	Not threatened	prickly shield fern
<i>Potamogeton cheesemanii</i>	MONOCOTYLEDONOUS HERBS	Potamogetonaceae	Local	Wetlands	Not threatened	pondweed
<i>Potentilla anserinoides</i>	DICOTYLEDONOUS HERBS	Rosaceae	Local	Damp sites	Not threatened	silverweed
<i>Prasophyllum colensoi</i>	MONOCOTYLEDONOUS HERBS	Orchidaceae	Occasional	Tussockland	Not threatened	
<i>Prunella vulgaris</i>	DICOTYLEDONOUS HERBS	Lamiaceae	Local	Damp sites	Exotic	selfheal
<i>Pseudognaphalium</i> (d) (CHR 275230; "lowland")	DICOTYLEDONOUS HERBS	Asteraceae	Rare	Rock outcrops	Not threatened	
<i>Pseudognaphalium ephemerum</i>	DICOTYLEDONOUS HERBS	Asteraceae	Rare	Ephemerally wet areas	Nationally Critical	
<i>Pseudopanax</i> (c) (<i>P. colensoi</i> var. <i>ternatus</i>)	DICOTYLEDONOUS TREES AND SHRUBS	Araliaceae	Local	Gullies	Not threatened	threefinger
<i>Psychrophila obtusa</i>	DICOTYLEDONOUS HERBS	Ranunculaceae	Local	Tops	Not threatened	white caltha
<i>Pteridium esculentum</i>	FERNS	Dennstaedtiaceae	Rare	Rock outcrops	Not threatened	bracken
<i>Pterostylis montana</i> agg. (non Hatch, L.B.Moore: sepals narrow)	MONOCOTYLEDONOUS HERBS	Orchidaceae	Rare	Lower altitudes	Not threatened	
<i>Pyrrosia eleagnifolia</i>	FERNS	Polypodiaceae	Rare	Lower altitudes	Not threatened	leather-leaf fern
<i>Ranunculus cheesemanii</i>	DICOTYLEDONOUS HERBS	Ranunculaceae	Local	Wetlands	Not threatened	
<i>Ranunculus ensyii</i>	DICOTYLEDONOUS HERBS	Ranunculaceae	Local	Tussockland	Not threatened	
<i>Ranunculus flammula</i>	DICOTYLEDONOUS HERBS	Ranunculaceae	Local	Wetlands	Exotic	
<i>Ranunculus foliosus</i>	DICOTYLEDONOUS HERBS	Ranunculaceae	Local	Bluffs	Not threatened	
<i>Ranunculus glabrifolius</i>	DICOTYLEDONOUS HERBS	Ranunculaceae	Local	Wetlands	Not threatened	
<i>Ranunculus gracilipes</i>	DICOTYLEDONOUS HERBS	Ranunculaceae	Local	Wetlands	Not threatened	
<i>Ranunculus macropus</i>	DICOTYLEDONOUS HERBS	Ranunculaceae	Local	CHR 607867, 607873. Canadian Flats	Data Deficient	
<i>Ranunculus maculatus</i>	DICOTYLEDONOUS HERBS	Ranunculaceae	Local	Tops	Naturally Uncommon	
<i>Ranunculus multiscapus</i>	DICOTYLEDONOUS HERBS	Ranunculaceae	Occasional	Tussockland	Not threatened	
<i>Ranunculus reflexus</i>	DICOTYLEDONOUS HERBS	Ranunculaceae	Local	Rock outcrops	Not threatened	hairy buttercup
<i>Ranunculus repens</i>	DICOTYLEDONOUS HERBS	Ranunculaceae	Local	Wetlands	Exotic	creeping buttercup
<i>Ranunculus royi</i>	DICOTYLEDONOUS HERBS	Ranunculaceae	Local	Rock outcrops	Not threatened	

RELEASED UNDER THE OFFICIAL INFORMATION ACT

<i>Ranunculus ternatifolius</i>	DICOTYLEDONOUS HERBS	Ranunculaceae	Rare	Wetlands	Naturally Uncommon	
<i>Raoulia australis</i>	DICOTYLEDONOUS HERBS	Asteraceae	Local	Tussockland	Not threatened	scabweed
<i>Raoulia grandiflora</i>	DICOTYLEDONOUS HERBS	Asteraceae	Local	Tops	Not threatened	
<i>Raoulia subsericea</i>	DICOTYLEDONOUS HERBS	Asteraceae	Common	Tussockland	Not threatened	
<i>Raoulia subulata</i>	DICOTYLEDONOUS HERBS	Asteraceae	Local	Tops	Not threatened	
<i>Raoulia tenuicaulis</i>	DICOTYLEDONOUS HERBS	Asteraceae	Rare	Gravels	Not threatened	scabweed
<i>Raukaua simplex</i>	DICOTYLEDONOUS TREES AND SHRUBS	Araliaceae	Rare	Beech forest	Not threatened	
<i>Rosa rubiginosa</i>	DICOTYLEDONOUS TREES AND SHRUBS	Rosaceae	Common	Lower altitudes	Exotic	sweet briar
<i>Rubus fruticosus</i> agg.	DICOTYLEDONOUS LIANES & RELATED TRAILING PLANTS	Rosaceae	Rare	Lower altitudes	Exotic	blackberry
<i>Rubus schmidelioides</i> var. <i>schmidelioides</i>	DICOTYLEDONOUS LIANES & RELATED TRAILING PLANTS	Rosaceae	Local	Lower altitudes	Not threatened	bush lawyer
<i>Rubus schmidelioides</i> var. <i>subpauperatus</i>	DICOTYLEDONOUS LIANES & RELATED TRAILING PLANTS	Rosaceae	Local	Lower altitudes	Not threatened	bush lawyer
<i>Rumex acetosella</i>	DICOTYLEDONOUS HERBS	Polygonaceae	Common	Throughout	Exotic	sheep's sorrel
<i>Rumex crispus</i>	DICOTYLEDONOUS HERBS	Polygonaceae	Rare	Wetlands	Exotic	curled dock
<i>Rumex flexuosus</i>	DICOTYLEDONOUS HERBS	Polygonaceae	Rare	Wetlands	Not threatened	native dock
<i>Rytidosperma australe</i>	MONOCOTYLEDONOUS HERBS	Gramineae (Danthonieae)	Local	Wetlands	Not threatened	
<i>Rytidosperma gracile</i>	MONOCOTYLEDONOUS HERBS	Gramineae (Danthonieae)	Local	Bluffs	Not threatened	
<i>Rytidosperma pumilum</i>	MONOCOTYLEDONOUS HERBS	Gramineae (Danthonieae)	Occasional	Tussockland	Not threatened	
<i>Rytidosperma unarede</i>	MONOCOTYLEDONOUS HERBS	Gramineae (Danthonieae)	Local	Lower altitudes	Not threatened	cliff fairy grass
<i>Sagina procumbens</i>	DICOTYLEDONOUS HERBS	Caryophyllaceae	Local	Damp sites	Exotic	procumbent pearlwort
<i>Salix fragilis</i>	DICOTYLEDONOUS TREES AND SHRUBS	Salicaceae	Local	Talla Burn	Exotic	crack willow
<i>Sambucus nigra</i>	DICOTYLEDONOUS TREES AND SHRUBS	Caprifoliaceae	Local	Lower altitudes	Exotic	elder
<i>Schizeilema</i> (b) (<i>S. haastii</i> var. <i>cyanopetalum</i>)	DICOTYLEDONOUS HERBS	Apiaceae	Local	Rock outcrops	Not threatened	
<i>Schizeilema cockaynei</i>	DICOTYLEDONOUS HERBS	Apiaceae	Local	Wetlands	Not threatened	
<i>Schizeilema trifoliolatum</i>	DICOTYLEDONOUS HERBS	Apiaceae	Rare	Overhangs	Not threatened	
<i>Schoenus pauciflorus</i>	MONOCOTYLEDONOUS HERBS	Cyperaceae	Local	Wetlands	Not threatened	bog-rush

RELEASED UNDER THE OFFICIAL INFORMATION ACT

<i>Scleranthus brockiei</i>	DICOTYLEDONOUS HERBS	Caryophyllaceae	Occasional	Tussockland	Not threatened	
<i>Scleranthus uniflorus</i>	DICOTYLEDONOUS HERBS	Caryophyllaceae	Occasional	Tussockland	Not threatened	
<i>Sedum acre</i>	DICOTYLEDONOUS HERBS	Crassulaceae	Local	Lower altitudes	Exotic	stonecrop
<i>Senecio jacobea</i>	DICOTYLEDONOUS HERBS	Asteraceae	Local	Lower altitudes	Exotic	ragwort
<i>Senecio minimus</i>	DICOTYLEDONOUS HERBS	Asteraceae	Rare	Talla Burn	Not threatened	fireweed
<i>Senecio quadridentatus</i>	DICOTYLEDONOUS HERBS	Asteraceae	Local	Dry rock outcrops at low altitude	Not threatened	cotton fireweed
<i>Senecio wairauensis</i>	DICOTYLEDONOUS HERBS	Asteraceae	Rare	Bluffs	Not threatened	groundsel
<i>Simplicia laxa</i>	MONOCOTYLEDONOUS HERBS	Gramineae (Agrostidinae)	Rare	Rock outcrops Taieri River	Nationally Critical	
<i>Sisymbrium officinale</i>	DICOTYLEDONOUS HERBS	Brassicaceae	Rare	Lower altitudes	Exotic	hedge mustard
<i>Solanum dulcamara</i>	DICOTYLEDONOUS LIANES & RELATED TRAILING PLANTS	Solanaceae	Occasional	Lower altitudes	Exotic	bittersweet
<i>Sonchus oleraceus</i>	DICOTYLEDONOUS HERBS	Asteraceae	Local	dry rock outcrops at low altitude	Exotic	sow thistle
<i>Sophora microphylla</i>	DICOTYLEDONOUS TREES AND SHRUBS	Fabaceae	Rare	Lower altitudes	Locally Notable	kowhai
<i>Spergularia rubra</i>	DICOTYLEDONOUS HERBS	Caryophyllaceae	Rare	Lower altitudes	Exotic	sand spurrey
<i>Stackhousia minima</i>	DICOTYLEDONOUS HERBS	Stackhousiaceae	Rare	Tussockland	Not threatened	
<i>Stegostyla lyallii</i>	MONOCOTYLEDONOUS HERBS	Orchidaceae	Local	Tussockland	Not threatened	
<i>Stellaria alsine</i>	DICOTYLEDONOUS HERBS	Caryophyllaceae	Local	Wetlands	Exotic	bog stitchwort
<i>Stellaria gracilentia</i>	DICOTYLEDONOUS HERBS	Caryophyllaceae	Local	Throughout	Not threatened	
<i>Stellaria media</i>	DICOTYLEDONOUS HERBS	Caryophyllaceae	Occasional	Lower altitudes	Exotic	chickweed
<i>Stellaria parviflora</i>	DICOTYLEDONOUS HERBS	Caryophyllaceae	Local	Rock outcrops	Not threatened	New Zealand chickweed
<i>Tanacetum parthenium</i>	DICOTYLEDONOUS HERBS	Asteraceae	Local	CHR 607831. Lower altitudes	Exotic	feverfew
<i>Taraxacum magellanicum</i>	DICOTYLEDONOUS HERBS	Asteraceae	Teviot	Johnson (1986)	Not threatened	native dandelion
<i>Taraxacum officinale</i>	DICOTYLEDONOUS HERBS	Asteraceae	Occasional	Throughout	Exotic	dandelion
<i>Thelymitra longifolia</i> agg.	MONOCOTYLEDONOUS HERBS	Orchidaceae	Local	Tussockland	Not threatened	sun orchid
<i>Trifolium dubium</i>	DICOTYLEDONOUS HERBS	Fabaceae	Local		Exotic	suckling clover
<i>Trifolium repens</i>	DICOTYLEDONOUS HERBS	Fabaceae	Occasional	Throughout	Exotic	white clover
<i>Ulex europaeus</i>	DICOTYLEDONOUS TREES	Fabaceae	Local	Lower altitudes	Exotic	gorse

RELEASED UNDER THE OFFICIAL INFORMATION ACT

	AND SHRUBS					
<i>Uncinia</i> (CHR 586013; aff. <i>U. rubra</i> ; Lammerlaw)	MONOCOTYLEDONOUS HERBS	Cyperaceae	Local	Overhangs	Regionally Significant	
<i>Uncinia divaricata</i>	MONOCOTYLEDONOUS HERBS	Cyperaceae	Local	Tops	Not threatened	hookgrass, bastard grass
<i>Uncinia purpurata</i>	MONOCOTYLEDONOUS HERBS	Cyperaceae	Rare	Overhangs	Naturally Uncommon	
<i>Uncinia rubra</i>	MONOCOTYLEDONOUS HERBS	Cyperaceae	Local	Throughout	Not threatened	red hookgrass
<i>Uncinia rupestris</i>	MONOCOTYLEDONOUS HERBS	Cyperaceae	Rare	Lower altitudes	Not threatened	
<i>Uncinia silvestris</i>	MONOCOTYLEDONOUS HERBS	Cyperaceae	Local	CHR 607868. Rock outcrops	Not threatened	
<i>Uncinia uncinata</i>	MONOCOTYLEDONOUS HERBS	Cyperaceae	Local	Gullies	Not threatened	hookgrass, bastard grass
<i>Urtica urens</i>	DICOTYLEDONOUS HERBS	Urticaceae	Local	Rock outcrops at low altitude	Exotic	nettle
<i>Utricularia dichotoma</i>	DICOTYLEDONOUS HERBS	Lentibulariaceae	Local	Damp sites	Not threatened	bladderwort
<i>Veronica serpyllifolia</i>	DICOTYLEDONOUS HERBS	Scrophulariaceae	Local	Wetlands	Exotic	turf speedwell
<i>Vicia sativa</i>	DICOTYLEDONOUS HERBS	Fabaceae	Local	dry rock outcrops at low altitude	Exotic	vetch
<i>Viola cunninghamii</i>	DICOTYLEDONOUS HERBS	Violaceae	Occasional	Throughout	Not threatened	
<i>Viola filicaulis</i>	DICOTYLEDONOUS HERBS	Violaceae	Local	Gullies	Not threatened	
<i>Viola lyallii</i>	DICOTYLEDONOUS HERBS	Violaceae	Rare	Wetlands	Not threatened	
<i>Vittadinia gracilis</i>	DICOTYLEDONOUS HERBS	Asteraceae	Local	dry rock outcrops at low altitude	Exotic	purple fuzzweed
<i>Vulpia myuros</i> var.	MONOCOTYLEDONOUS HERBS	Gramineae (Poeae)	Occasional	Throughout	Exotic	vulpia hair grass
<i>Wahlenbergia albomarginata</i> subsp. <i>albomarginata</i>	DICOTYLEDONOUS HERBS	Campanulaceae	Occasional	Tussockland	Not threatened	harebell
<i>Wahlenbergia violacea</i>	DICOTYLEDONOUS HERBS	Campanulaceae	Rare	Lower altitudes	Not threatened	

APPENDIX 6: Invertebrate Species Recorded on Beaumont Pastoral Lease

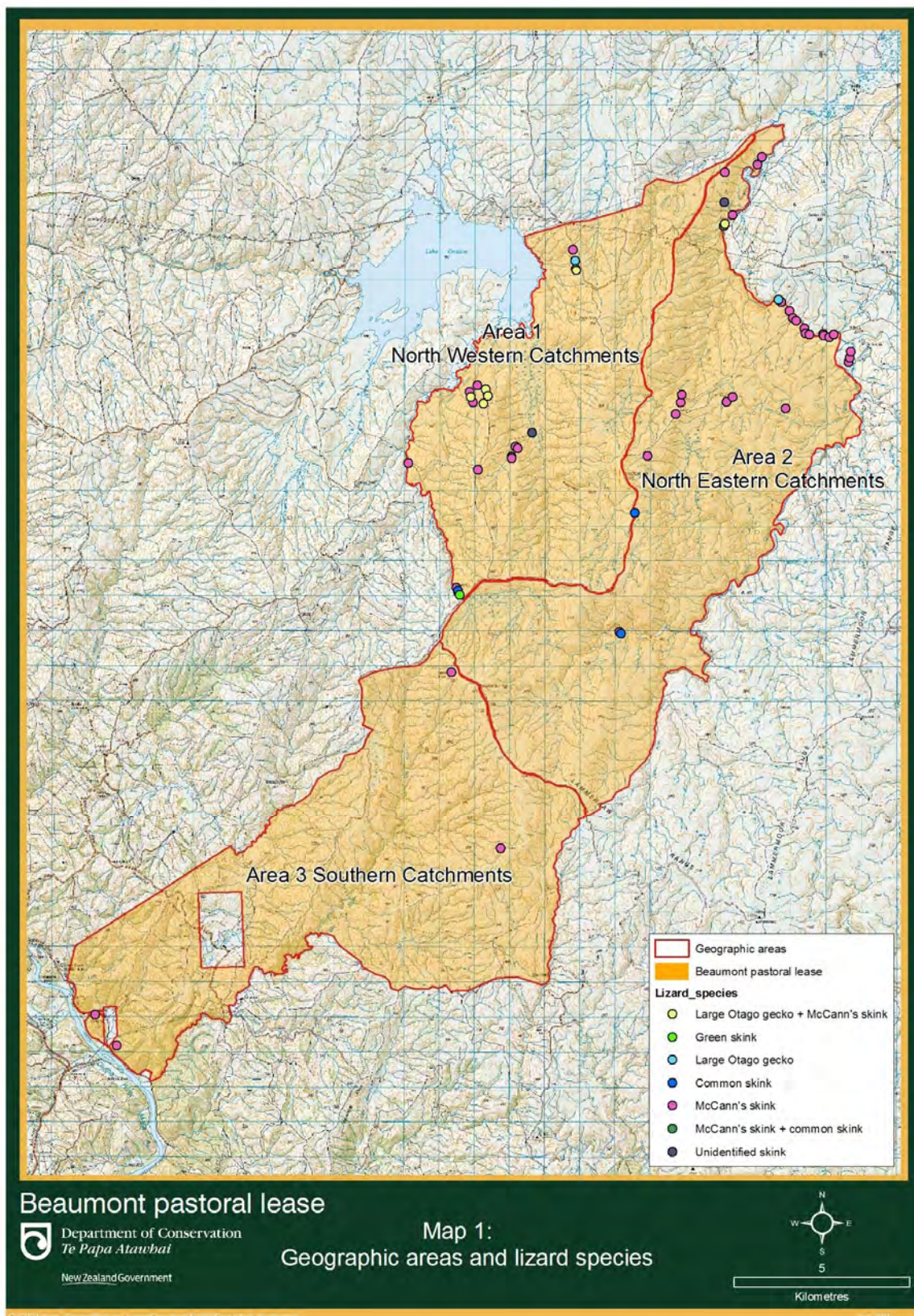
RELEASED UNDER THE OFFICIAL INFORMATION ACT

Arachnida	Araneae	Agelenidae	<i>Neoramia otagoa</i>	18	Endemic spiders, known globally as funnel web spiders. NZ species do not make funnels. <i>Data Deficient</i> .
Arachnida	Araneae	Agelenidae	Species 2	4,5,13,17	Probably endemic to Otago.
Arachnida	Araneae	Araneidae	<i>Coloranea</i> sp.	4,10,11,16,19	Native orb web spiders
Arachnida	Araneae	Cycloctenidae	<i>Cycloctenus</i> sp.	6,14	Endemic genus. Montane 'scuttling' spiders.
Arachnida	Araneae	Gnaphosidae	<i>Anzacia gemma</i>	6,8,11,12	Common endemic stealthy spider.
Arachnida	Araneae	Lycosidae	<i>Anoteropsis urquharti</i>	11,16	Endemic to Canterbury / Otago high country.
Arachnida	Araneae	Pisuridae	<i>Dolomedes minor</i>	1,2,14	Nursery web spider. Native.
Arachnida	Araneae	Stiphidiidae	<i>Cambridgea antipodiana</i>	3,19	Endemic sheet web spider.
Arachnida	Araneae	Tetragnathidae	<i>Tetragnatha</i> sp.	7,4,13,15	Swamp orb web spiders. Endemic.
Insecta	Blattodea	Blattidae	<i>Celatoblatta quinguemaculata</i>	6, 13, 17, 20	Alpine cockroach. An Otago endemic, abundant where found.
Insecta	Blattodea	Blattidae	<i>Parellipsidion inaculeatum</i>	2,3,9,18	Endemic species. Common and widespread.
Insecta	Coleoptera	Carabidae	<i>Demitrida moesta</i>	1,2,14	Native ground beetle.
Insecta	Coleoptera	Carabidae	<i>Dicrochile novaeselandiae</i>	5,7	Native ground beetle.
Insecta	Coleoptera	Carabidae	<i>Holcaspis placida</i>	14,17,19	Ground beetle. Endemic to Otago.
Insecta	Coleoptera	Carabidae	<i>Holcaspis</i> sp.	3,4,21	Small ground beetles. Endemic genus.
Insecta	Coleoptera	Carabidae	<i>Mecodema lucidum</i>	17,21	Ground beetle. Endemic.
Insecta	Coleoptera	Carabidae	<i>Mecodema</i> sp.	12	Genus of large ground beetles.
Insecta	Coleoptera	Carabidae	<i>Megadromus bullatus</i>	5	Large distinctive ground beetle, Mt Cook to Stewart Island.
Insecta	Coleoptera	Carabidae	<i>Megadromus</i> sp.	2,7	Genus of large ground beetles.
Insecta	Coleoptera	Carabidae	<i>Oregus aereus</i>	1,4,21,16,11	Common and widespread ground beetle. Endemic.
Insecta	Coleoptera	Curculionidae	<i>Inophloeus sulcifer</i>	13,19	South Island endemic to Otago and Canterbury.
Insecta	Coleoptera	Curculionidae	<i>Eugonmini</i> sp.	4,5,7,9,18,19,20,21	Sub family of common speargrass weevils.
Insecta	Coleoptera	Elatridae	Unidentified species	14	Click beetles.
Insecta	Coleoptera	Oedemeridae	<i>Selenopalpus aciphyllae</i>	7,19	Lax beetle.
Insecta	Coleoptera	Scarabidae	<i>Prodontria</i> sp.	5,10,1,2,3,5,10	Genus of endemic scarab beetles. Includes several rare and threatened scarabs.
Insecta	Coleoptera	Scarabidae	<i>Pyronota festiva</i>	1,2,3,5,10	Manuka beetle, native.
Insecta	Coleoptera	Tenebrionidae	<i>Mimopeus opaculus</i>	6,17,20	Darkling beetle. New Zealand endemic.
Insecta	Coleoptera	Tenebrionidae	<i>Zadelium intermedium</i>	8,9,14	Darkling beetle. Endemic.
Insecta	Diptera	Asilidae	<i>Neoitamus melanopogon</i>	1,19	Native robber fly. Common and widespread.
Insecta	Diptera	Stratiomyidae	<i>Beris</i> sp.	2,7	Cosmopolitan genus of soldier fly.
Insecta	Diptera	Syrphiidae	<i>Melanostoma fasciatum</i>	1,4,15	Common native hover fly.
Insecta	Diptera	Tanyderidae	Unidentified species	15	Primitive crane fly group. Probably endemic.
Insecta	Diptera	Tipulidae	<i>Leptotarsus montanus</i>	7,10,15,19	Mountain crane fly. Endemic.
Insecta	Lepidoptera	Crambidae	<i>Orocrambus philpotti</i>	4,8,9,16	Endemic grassland moth.
Insecta	Lepidoptera	Geometridae	<i>Pseudocoremia</i> sp. <i>P. suavis</i> ?	16,17	Endemic genus bearing several threatened species.

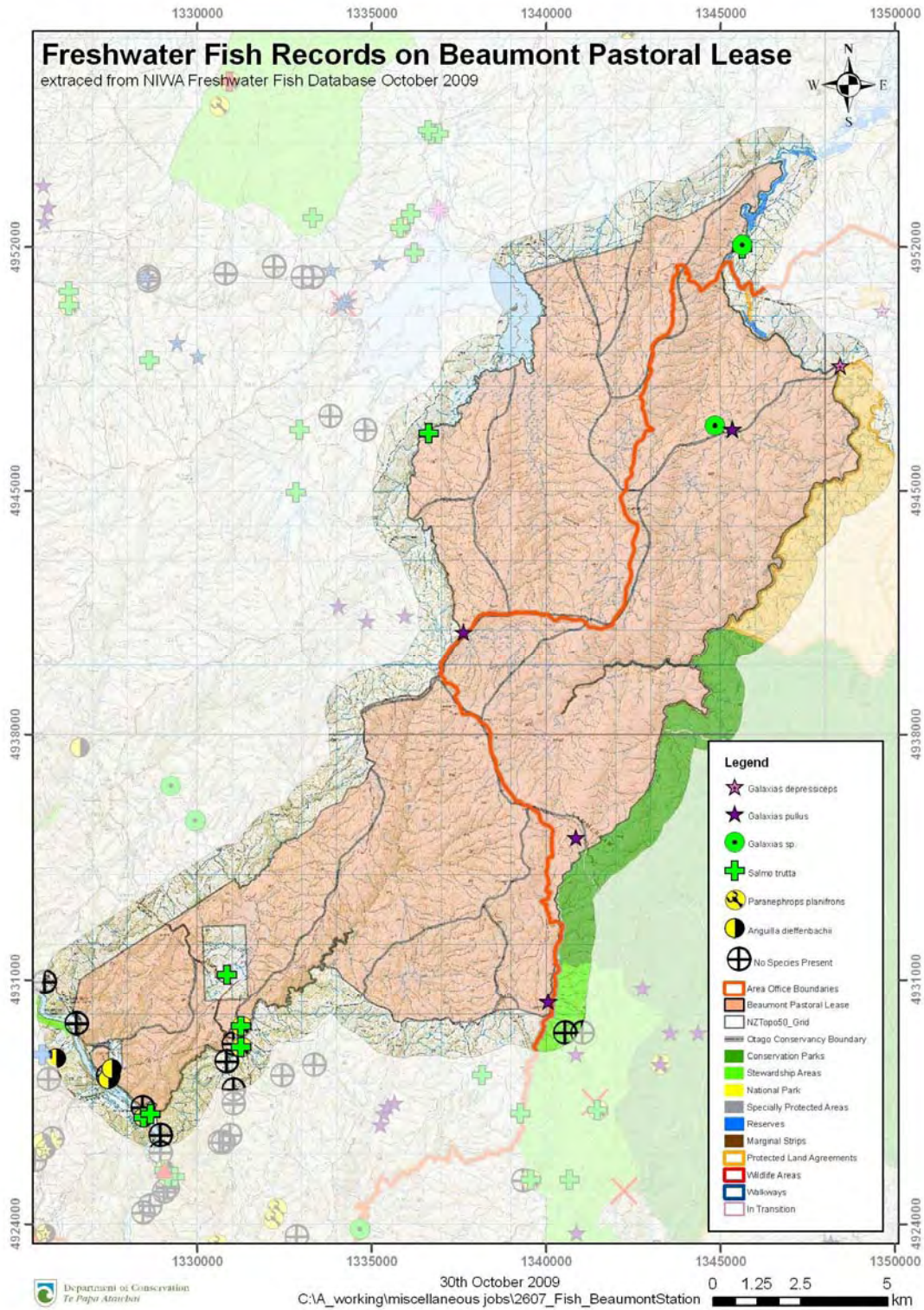
RELEASED UNDER THE OFFICIAL INFORMATION ACT

Insecta	Lepidoptera	Nymphalidae	<i>Argyrophenga antipodum</i>	10,15,17,21	Common tussock ringlet. Native.
Insecta	Lepidoptera	Noctuidae	<i>Graphania nullifera</i>	19	Speargrass moth
Insecta	Lepidoptera	Noctuidae	<i>Graphania mutans</i>	7	Common garden owlet
Insecta	Lepidoptera	Noctuidae	<i>Ichneutica ceraunias</i>	18	Common snowgrass owlet
Insecta	Hymenoptera	Pompilidae	<i>Sphictostethus nitidus</i>	12	Golden hunting wasp. Native
Insecta	Hymenoptera	Formicidae	<i>Monmorium antarcticum</i>	1,2,5,6,18,14	Common native southern ant.
Insecta	Odonata	Coenagrionidae	<i>Xanthocnemis zealandica</i>	7,10	Common red damselfly. Native.
Insecta	Odonata	Petaluridae	<i>Uropetala chiltoni</i>	8	Giant mountain dragon fly. Native.
Insecta	Orthoptera	Acrididae	<i>Sigaus australis</i>	11,12,13,15,16	Common south Island mountain grasshopper
Insecta	Orthoptera	Acrididae	<i>Sigaus campestris</i>	8,20	Notched grasshopper. Not common. Found from Hanmer Springs to Southland (300-1000m). Distinct notches on rear of pro-notal shield.
Insecta	Orthoptera	Acrididae	<i>Phaulacridium marginale</i>	1,2,4,8,14	Common lowland grasshopper. Native.
Insecta	Orthoptera	Anostomatidae	<i>Hemiandrus furcifer</i>	10	Common high country ground weta.
Insecta	Orthoptera	Rhaphidophoridae	<i>Pleiplectron</i> sp.	2	
Insecta	Plecoptera	Australperlidae	<i>Australpera cyrene</i>	7	Common Black Stone fly.
Insecta	Trichoptera	Hydrobiosidae	<i>Hydrobiosis torrentis</i>	19 McKay Stream	Endemic caddis fly, common.
Myriapoda	Chilopoda	Geophilidae	<i>Zelanophilus provocator</i>	3, 14	Endemic centipede. Widespread.
Myriapoda	Diplopoda	Icosidesmidae	<i>Icosidesmus worthingtoni</i>	5,7,13,14,19	Millipede, endemic to Otago.
Myriapoda	Diplopoda	<u>Iulomorphidae</u>	<i>Eumastigonus</i> sp.	7,18	Native 'coiling' millipedes.

APPENDIX 7: Geographic Areas and Lizard Species – Beaumont Pastoral Lease



APPENDIX 8 Freshwater fish previously recorded on Beaumont Pastoral Lease (NIWA Database)



**APPENDIX 9: Sampling sites and fish species found on Beaumont Pastoral Lease 14-17
December 2009**

Number	Location	Easting	Northing	Species present	Abundance
1	Bullocky Creek	1342868	4946719	Dusky galaxias (<i>Galaxias pullus</i>)	C
2	Canadian Creek	1345065	4951512	Brown trout (<i>Salmo trutta</i>)	R
3	Riddles Creek	1343019	4551475	Flathead galaxias (<i>Galaxias depressiceps</i>)	O
4	Bonds Creek	1341378	4951704	Unidentified galaxias (<i>Galaxias</i> sp?) – seen but not caught	R
5	Fortification Creek	1339630	4945695	Brown trout (<i>Salmo trutta</i>)	C
6	Unnamed Taieri Tributary	1348535	4947624	Dusky galaxias (<i>Galaxias pullus</i>)	O
7	Red Swamp Creek	1347329	4946050	Flathead galaxias (<i>Galaxias depressiceps</i>)	O
8	Teviot tributary (Grey Mares Tail Falls)	1339023	4945013	Unidentified galaxias (<i>G.</i> sp?) no sample able to be taken, possibly Teviot galaxias (<i>G.</i> sp “Teviot”)	O
9	Teviot River South Branch	1336096	4944787	Brown trout (<i>Salmo trutta</i>)	O
10	Talla Burn – beech forest 1	1331875	4930356	Dusky galaxias (<i>Galaxias pullus</i>) Brown trout (<i>Salmo trutta</i>)	O R
11	Talla Burn - beech forest 2	1332242	4930266	Unidentified galaxias (<i>Galaxias</i> sp?) – seen but not caught – probably dusky galaxias (<i>G. pullus</i>).	R
12	Talla Burn - upstream	1334752	4932940	Dusky galaxias (<i>Galaxias pullus</i>)	C
13	Little Beaumont River	1339182	4931510	Dusky galaxias (<i>Galaxias pullus</i>)	O
14	Moffats Stream	1337765	4930137	Dusky galaxias (<i>Galaxias pullus</i>)	A
15	Fruid Burn -upper	1331915	4934148	Dusky galaxias (<i>Galaxias pullus</i>)	O
16	Fruid Burn - lower	1331340	4931381	Nil recorded	n/a
17	Little Minzion Burn	1327811	4930600	Nil recorded	n/a
18	Little Minzion Burn tributary	1328164	4929590	Koura (<i>Paranephrops zealandicus</i>)	A

R = rare (one fish caught)

O = occasional (2-4 fish)

C = common (5-10 fish)

A = abundant (> 10 fish)

APPENDIX 10: Historic records from Beaumont Pastoral Lease

NZAA site record	Description	Comment
G43/192	Umu, Teviot South Branch	
G43/193	Rock shelter, Teviot South Branch	
G43/194	Rock shelter, Teviot South Branch	
G43/196	Wire holding pen for stock, Fortification Creek	
G43/197	Two huts and holding pen, head of Fortification Creek	
G43/198	Hut sites, Teviot River South Branch	
G43/199	Trig H	not field checked – read from SO plan
G43/200	Fence line, access road on eastern boundary	
G43/201	Fence line, access road on eastern boundary	
G43/202	Fortification Creek gold mining hydraulic lifting pit, tailings and hut site (Grey Mare’s Tail)	
G44/127	Umu, Tallaburn	
G44/129	Fruid Burn dam, Island Block Gold Mining Co.	
G44/130	Trig C	
G44/131	Sub-Trig 1, Craig Flat	
G44/132	Trig BB	not field checked – read from SO plan
G44/133	Trig I	not field checked – read from SO plan
G44/134	Trig N	not field checked – read from SO plan
G44/135	Trig P	not field checked – read from SO plan
H43/117	Early Taieri hut (1858?), upper Red Swamp Creek	
H43/118	Damaged hut site, Bottle Rock	
H43/119	Peat cutting area Taieri River, Canadian Flat	
H43/120	Current Taieri hut (1920s), upper Red Swamp Creek	
H43/121	Hut site (rabbits), Bottle Rock	
H43/122	Trench mining, reservoirs, water race and hut, Riddles Creek	
H43/123	Ah Pins hut, Riddles	
H43/124	Charles Ayton’s hut site, Riddles	
H43/125	Large earthen enclosure (unknown purpose), Riddles	
H43/126	Trig D Bottle Rock	
H43/127	Trig Q Davidsons Top	
H43/128	Water race, Riddles Creek	
H43/129	Water race, Canadian Flat	
H43/130	Fence line, Red Swamp Creek	
H43/131	Fence line, Riddles (northern boundary)	

H43/132	Hut site, lower Red Swamp Creek	
H43/133	Alluvial mining and water races, lower Red Swamp Creek	
H43/134	Hut site north of Canadian Creek, Canadian Flat	
H43/135	Sluicings and hut sites north of Canadian Creek, Canadian Flat	
H43/136	Mining Welshmans Gully alluvial sluicings and water races, Fortification Creek	
H44/1077	Trig K	not field checked – read from SO plan