

Crown Pastoral Land Tenure Review

Lease name : BEAUMONT STATION

Lease number : PO 362

Conservation Resources Report - Part 5

As part of the process of Tenure Review, advice on significant inherent values within the pastoral lease is provided by Department of Conservation officials in the form of a Conservation Resources Report. This report is the result of outdoor survey and inspection. It is a key piece of information for the development of a preliminary consultation document.

Note: Plans which form part of the Conservation Resources Report are published separately.

These documents are all released under the Official information Act 1982.

December

10

APPENDIX 15: Submission – New Zealand Deerstalkers' Association (Inc)

APPENDIX 15: Submission – New Zealand Deerstalkers' Association (Inc)

From: Debbie Hogg
Sent: Monday, 26 April 2010 9:29 a.m.
To: Rob Wardle
Subject: FW: Tenure review meeting, Alexandra, 27APR2010

FYI - comments from Chaz (NZDA) re Beaumont.
Deb

-----Original Message-----

From: forsyths@clear.net.nz [mailto:forisyths@clear.net.nz]
Sent: Friday, 23 April 2010 3:12 p.m.
To: Debbie Hogg; Helen James
Subject: Tenure review meeting, Alexandra, 27APR2010

Dear Debbie and Helen,

Earlier, I signalled my intention and willingness to attend the meeting in Alexandra to discuss tenure review matters in person.

I have now decided that at the expense of some 5 hours of driving, and in light of only limited feedback from affected NZDA branches in the area, I shall not.

There is recreational hunting interest in the Beaumont Station area, but it has been closely circumscribed by changes in station management which have precluded public access to my knowledge, to date. In past years the station was subject to an agreement between the runholder and interested recreational hunting organisations which allowed, under conditions, recreational hunting there.

Accordingly, both legal and physical access is desired for vehicles for recreational hunting purposes, under certain conditions which will need to be reviewed by both parties to ensure fairness.

I have no personal knowledge of the recreational hunting interest in the Obelisk area, although I suspect that hares and sundry wild animals will exist there. Access both physical and legal would be desirable for vehicles for recreational hunting purposes, under certain conditions which will need to be reviewed by both parties to ensure fairness.

Kelvin Grove is believed to contain a 'nomadic' feral pig population, and again, the access provisions mentioned earlier in this signal are seen as being most desirable by recreational hunters.

Glencoe North Otago (Kakanui Ranges) is of considerable recreational hunting interest and again, the provisions referred to earlier will apply here. It is noted that some aspects of this run are already freehold in nature and so are beyond the purview of this tenure review.

Yours faithfully,

Chaz Forsyth
Executive member
South Island
New Zealand Deerstalkers' Association (Incorporated)

APPENDIX 16: Submission – Clutha Gold Charitable Trail Trust

From: Dillon [mailto:G.J.Dillon@xtra.co.nz]
Sent: Tuesday, 25 May 2010 3:30 p.m.
To: Rob Wardle
Subject: FW: Re Beaumont Station Otago PO 362 Tenure Review.

Hi Rob.

I notice that the above property i.e. Beaumont Station is in the preliminary stages of Tenure Review.

I am acting as a Trustee for the *Clutha Gold Charitable Trail Trust*.

The Trust is attempting to construct a trail from Lake Roxburgh Dam down the true left bank of the Clutha River to Beaumont and then through to Lawrence.

The Trust has applied for funding from the *Government Cycleway Project* and has been allocated \$3.8 million for the project subject to certain conditions being achieved.

At this point in time the Trust has yet to finalise the trail route past the Beaumont Station Lease.

.Should we have to be in the road corridor we note that the corridor is very narrow and for safety reasons it maybe appropriate to attempt some very minor boundary adjustments with the road and Beaumont Station.

Could you please note The Trust's interest in the process at this stage.

Regards and Thanks

Graham Dillon
6A Lancewood Lane.
Queenstown
Phone 034413155

4.3 Maps

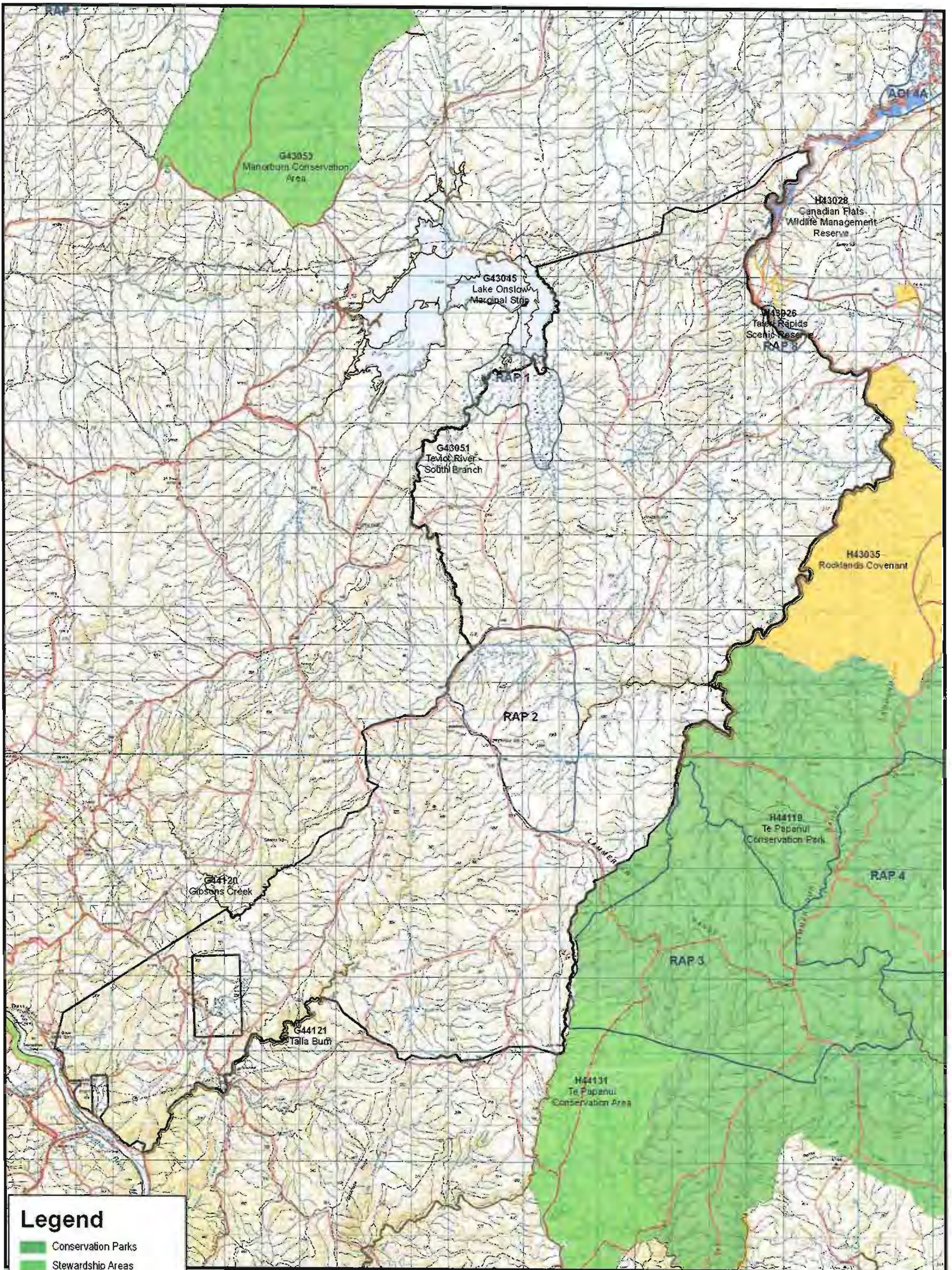
4.2.1 Topographic and Cadastral including Recommended Areas for Protection from PNAP Survey and Public Conservation Land

4.2.2 Landscape Units and Significant Landscape Units

4.2.3 Values - Ecological

4.2.4 Values - Historic

4.2.5 Values - Recreation

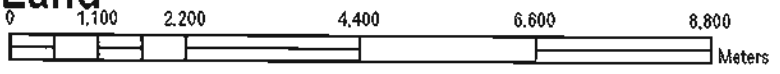


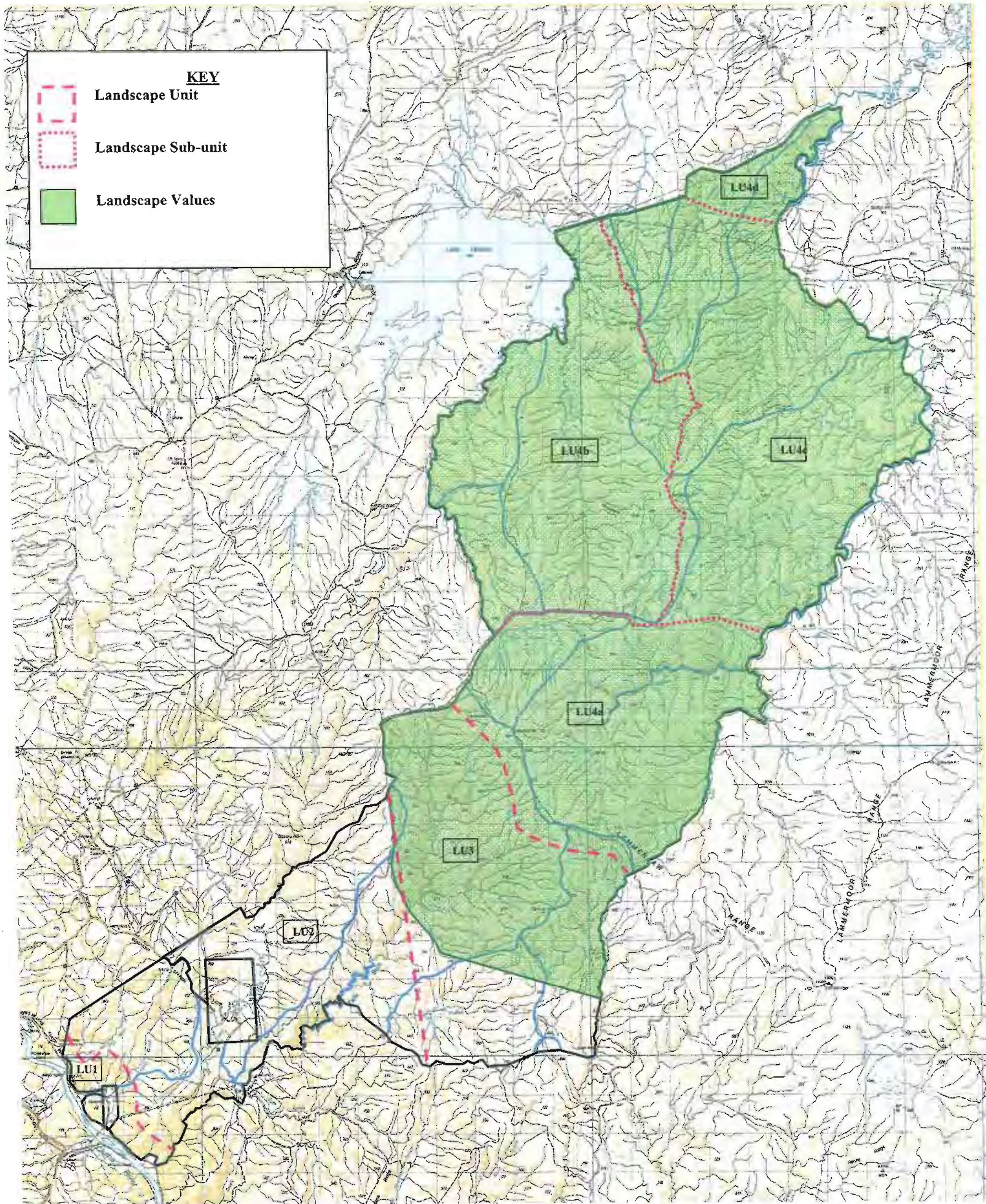
Legend

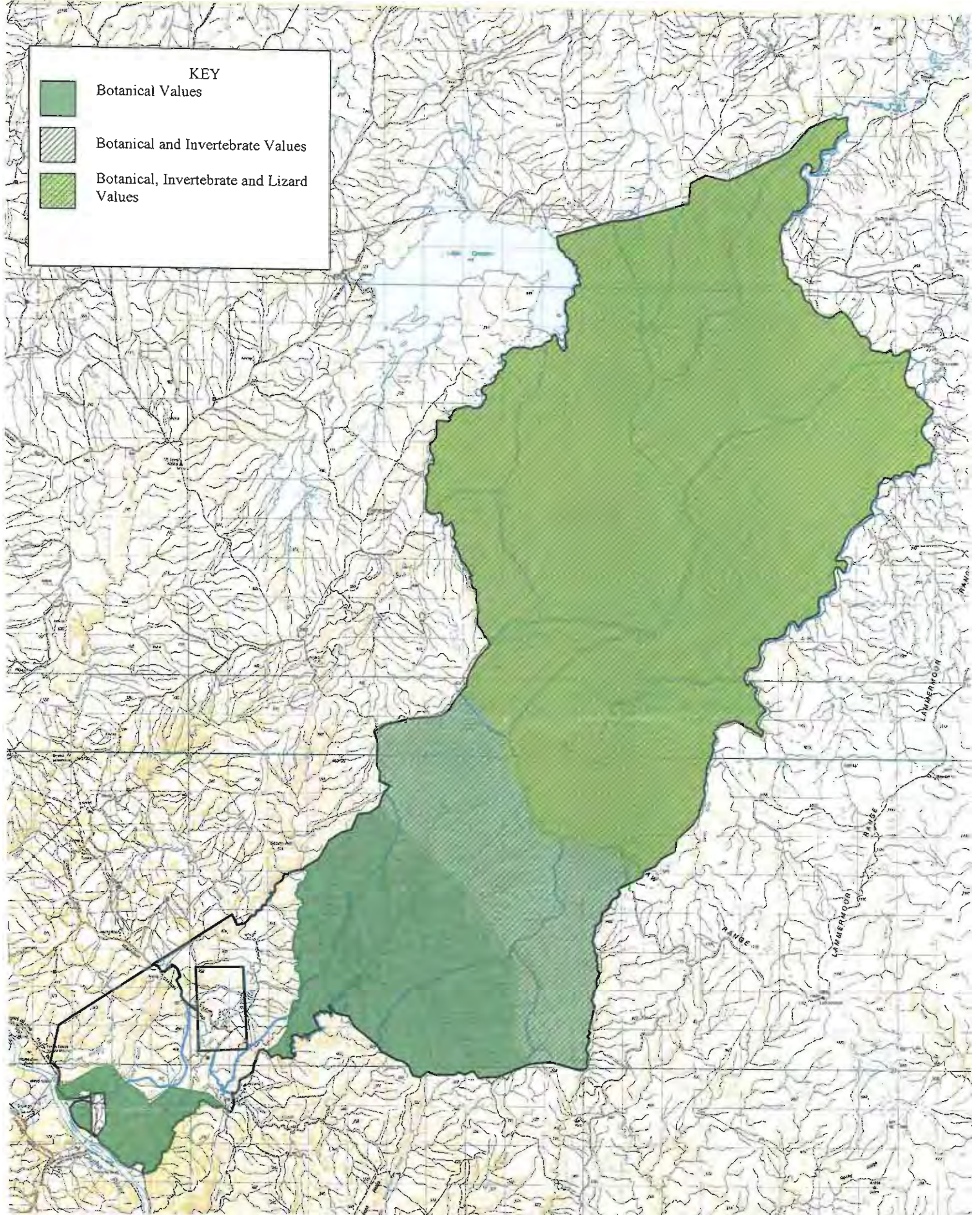
- Conservation Parks
- Stewardship Areas
- Reserves
- Marginal Strips
- Protected Land Agreements
- RAPs
- Legal Roads

Map 2.4.1: Topocadastral Map of Beaumont Pastoral Lease showing Recommended Areas for Protection from PNAP Survey and Public Conservation Land

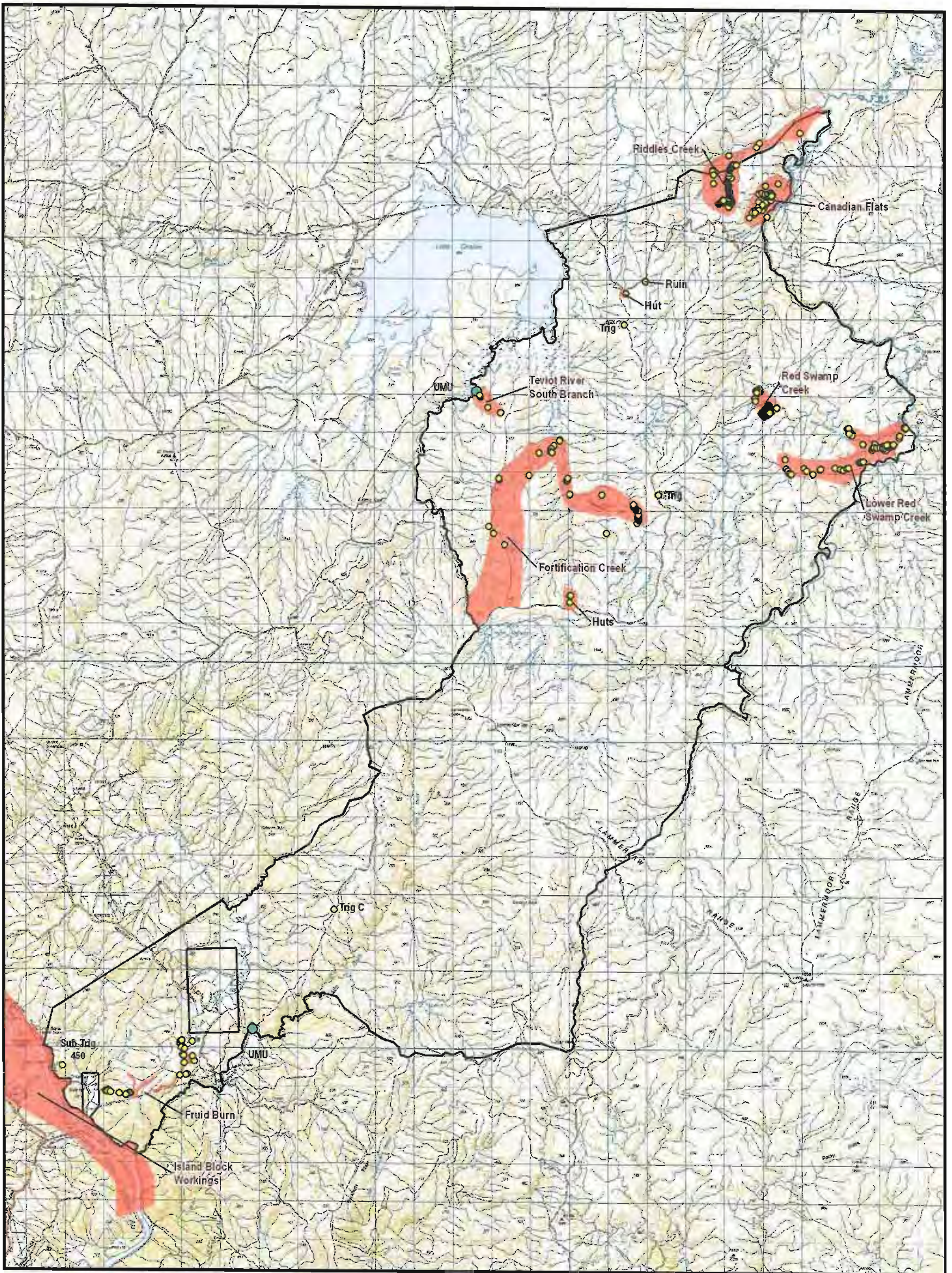
Department of Conservation
Te Papa Atawhai







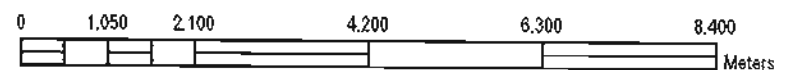
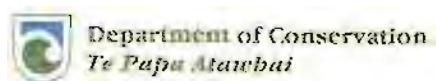
Map 4.2.3: Ecological Values- Beaumont Pastoral Lease

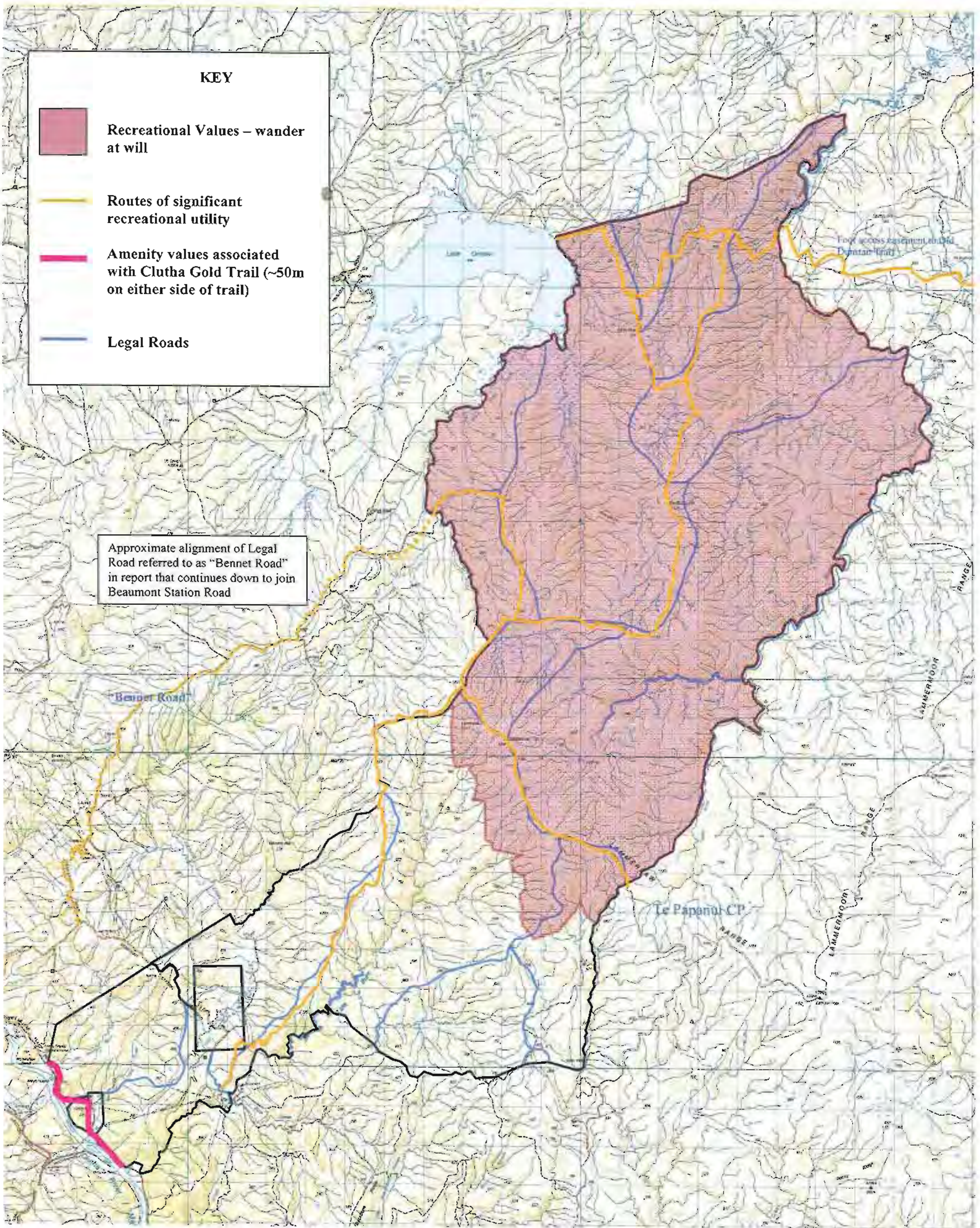


**Map 4.2.4 Historic Values
Beaumont Station Pastoral Lease**

Legend

- umu
- Key Historic points
- Key Historic Areas





Map 4.2.5 Recreation Values - Beaumont Pastoral Lease