

Crown Pastoral Land Tenure Review

Lease name : BEAUMONT STATION

Lease number : PO 362

Conservation Resources Report - Part 6

As part of the process of Tenure Review, advice on significant inherent values within the pastoral lease is provided by Department of Conservation officials in the form of a Conservation Resources Report. This report is the result of outdoor survey and inspection. It is a key piece of information for the development of a preliminary consultation document.

Note: Plans which form part of the Conservation Resources Report are published separately.

These documents are all released under the Official information Act 1982.

December

10

4.4 Photographs

4.4 Photographs

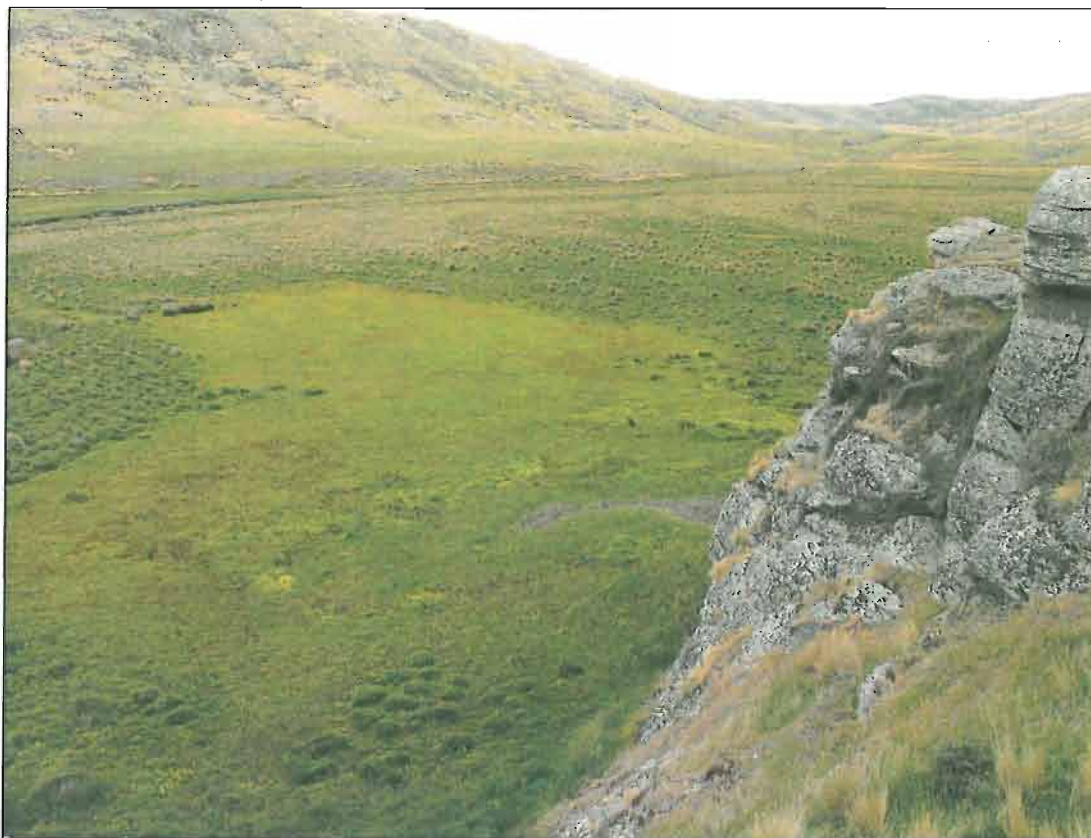
Taieri River



Taieri River 2km downstream of confluence with Ailsa Creek



Rocky habitat in upper Taieri River provides habitat for lizards



Canadian Flats, Taieri catchment



Canadian Flats in distance, from pylon track. Tall tussockland dominates the surrounding hillslopes, although mouse-eared hawkweed is common in disturbed areas



Taieri River Crossing near Canadian Flats. Rocky tors provide habitat for grass *Simplicia laxa*.



Riddles Creek area at northernmost extent of Lease. Degraded tussockland supports one of largest population of *Kirkianella novae-zelandiae* known nationally.

Teviot River Wetlands Feeder Streams and associated tussocklands



Aerial photo showing Fortification Swamp in middle left foreground, surrounded by extensive tall tussockland.



Lower Fortification Creek wetlands are nationally significant wetlands, providing habitat for a range of rare and threatened plants, and play an important role in regulating river flows and water quality.



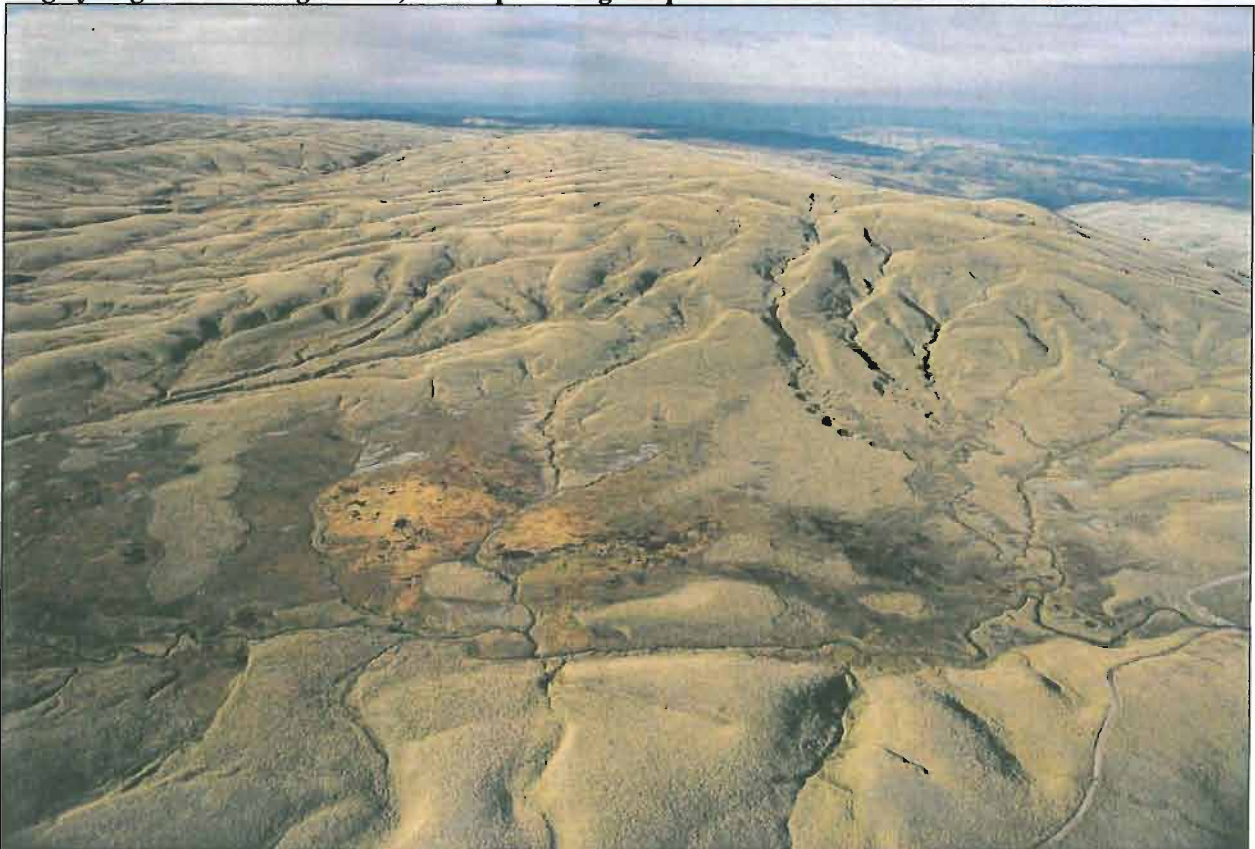
North of Red Swamp



Teviot Swamp from Davidsons Top; Lake Onslow in background



Lammerlaw tops. Extensive tall tussocklands punctuated by scattered wetlands. The farm track, largely aligned to the legal road, would provide good public access for recreation.



Teviot Swamp comprises peaty wetlands dominated by sphagnum moss and shrubby areas supporting bog pine and celery pine (RAP2).



Sheep grazing the wetlands



Upper MacKays Creek wetland



Upper MacKays Creek Wetland, east of main Lammerlaw Range ridgetop



Outcropping rock above Lake Onslow (left) and the Teviot River South Branch (right).



Astelia linearis var. *novaezealandiae* (above) and *Psychrophila obtusa* (below) occupy low alpine herbfields on the Lammerlaw Ridge tops.





Looking north from Davidsons Top towards Pineheugh top and Dunstan Range behind.



Snow banks persist, releasing melt water in December, thereby contributing to summer river flows

Southern Catchments



Bog pine wetland in upper Talla Burn



Aerial photo of property. Te Papanui Conservation Park boundary is at right hand side of photo. Large gorse infestation in centre left, is spreading out from an historic gorse fence.



Gorse has spread from an historic gorse fence across the front slopes of the property at about 700m asl.



Manuka shrubland in the Fruid Burn has been extensively sprayed.



Lower Talla Burn silver beech forest is an example of a vegetation type rare in the Waipori ED. Nearby shrubland have been sprayed and burned.



Silver beech forest remnant in lower Talla Burn merges with extensive shrubland. Willow trees line the stream margins.



Clutha faces, near Craig Flat have been extensively sprayed. Broom dominates the vegetation cover, although some native shrub species persist.

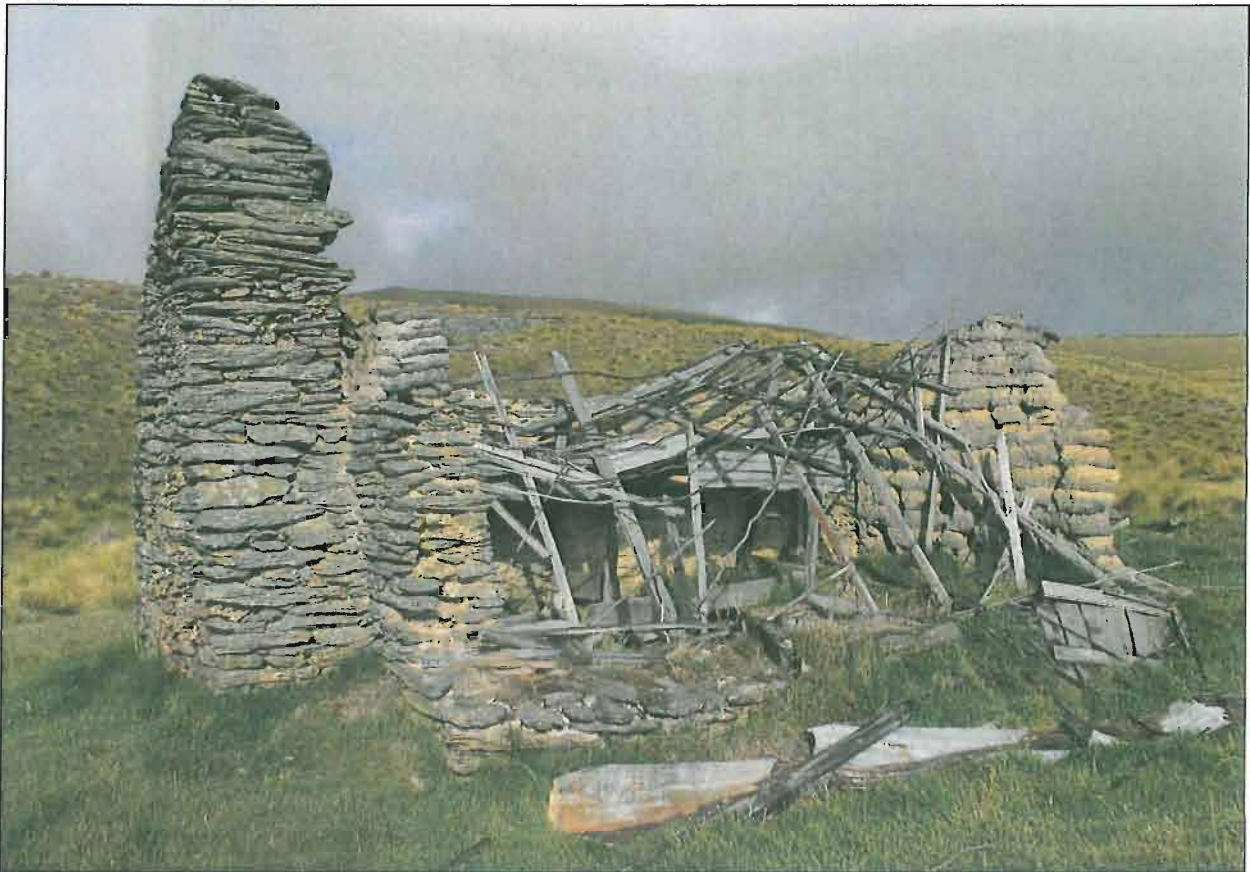


Dryland grey shrubland comprised of porcupine shrub, kanuka, and coprosma species persists on the spur where many of the Fruid Burn historic sites are located, overlooking Craig Hill and Clutha River. The Millenium Track winds its way across Craig Flat.



Bluffs above Craig Flat support the uncommon herb *Einadia allanii*.

Historic Values



Sod hut near Red Swamp Stream



Fruid Burn Workings- old fence post



Extensive water supply and early flume systems (comprising races, reservoirs, pipes, telephone line) associated with the Island Block Gold Mining Company Ltd are present at Fruid Burn and around the Clutha River.



Lizards



Lizard species found on Beaumont Lease: common skink (top left), McCann's skink (top right), green skink (bottom left) and large Otago gecko (bottom right). Threat rankings for these species are Not Threatened (common skink and McCann's skink) and Gradual Decline (green skink and large Otago gecko) (Hitchmough et al., 2007).