

## **Crown Pastoral Land Tenure Review**

**Lease name : BEN LEDI**

**Lease number : PO 199**

### **Conservation Resources Report - Part 5**

As part of the process of Tenure Review, advice on significant inherent values within the pastoral lease is provided by Department of Conservation officials in the form of a Conservation Resources Report. This report is the result of outdoor survey and inspection. It is a key piece of information for the development of a preliminary consultation document.

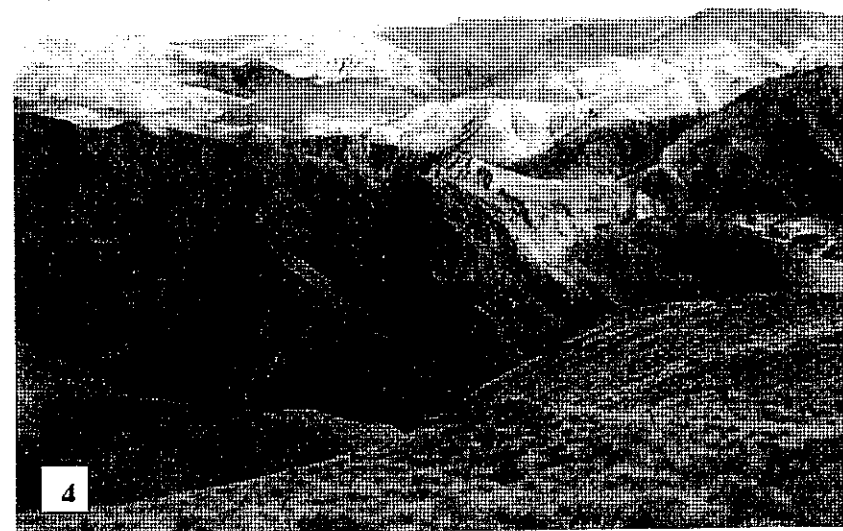
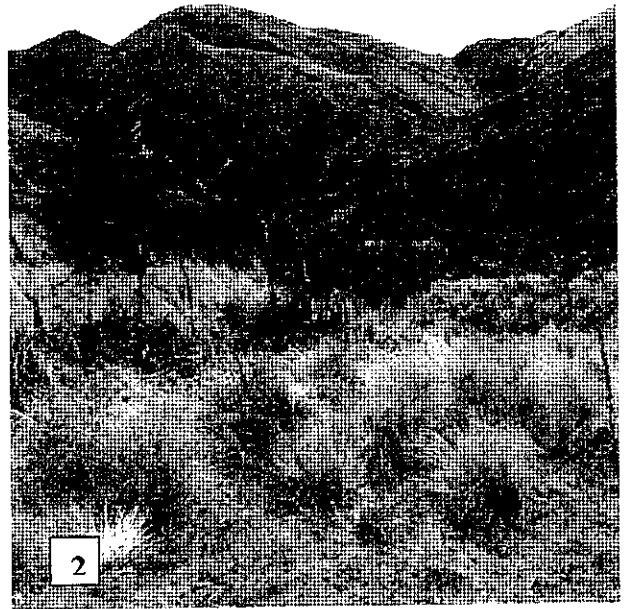
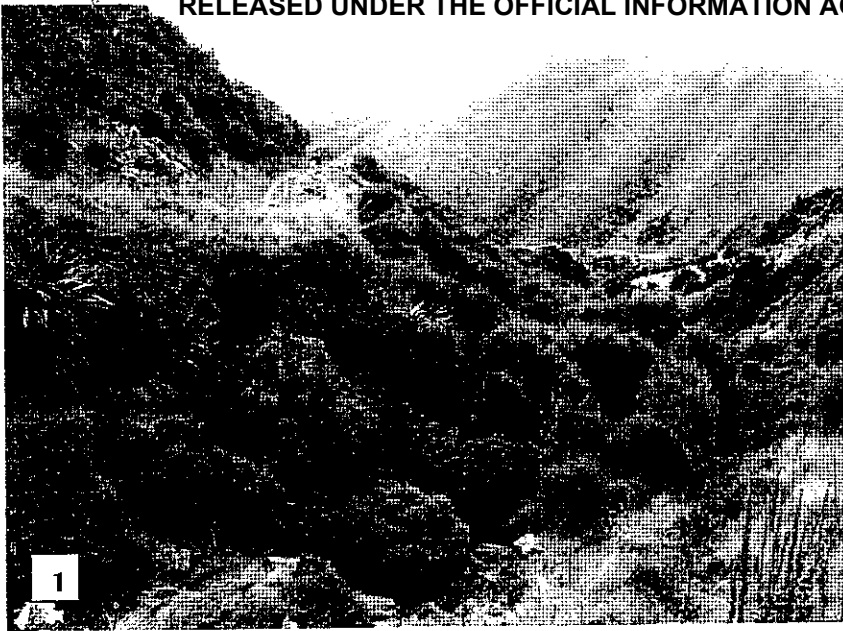
Note: Plans which form part of the Conservation Resources Report are published separately.

These documents are all released under the Official information Act 1982.

**June**

**06**

A8      Photos



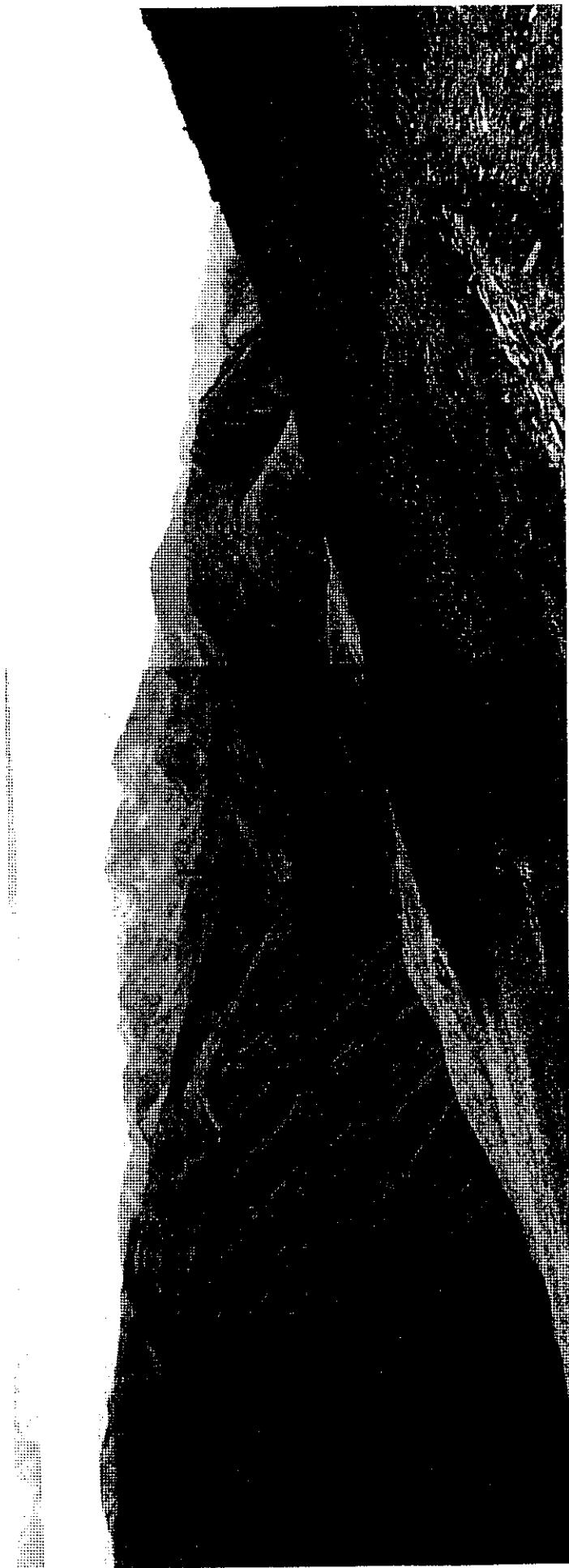
**BEN LEDI PHOTOS**

1 Shrublands looking toward South Branch Maerewhenua River.

2 South side of Maerewhenua Spur.

3 Back of property in snow.

4 Looking down to North Branch Maerewhenua River and RAP on neighbouring Mt Alexander.



The Maerewhenua Spur looking North East.



Shrublands on the South Side Maerewhenua Spur

**4.3 Illustrative Maps**

**4.2.1 Topo/Cadastral**

**4.2.2 Landscape Units and Values**

**4.2.3 Significant Inherent natural Values**