

Crown Pastoral Land Tenure Review

Lease name : BEN NEVIS

Lease number : PO 241

Preliminary Proposal Designations Plan

The attached plan is a copy of the Designations Plan included in the Preliminary Proposal for the above review.

The report attached is released under the Official Information Act 1982.

September 09

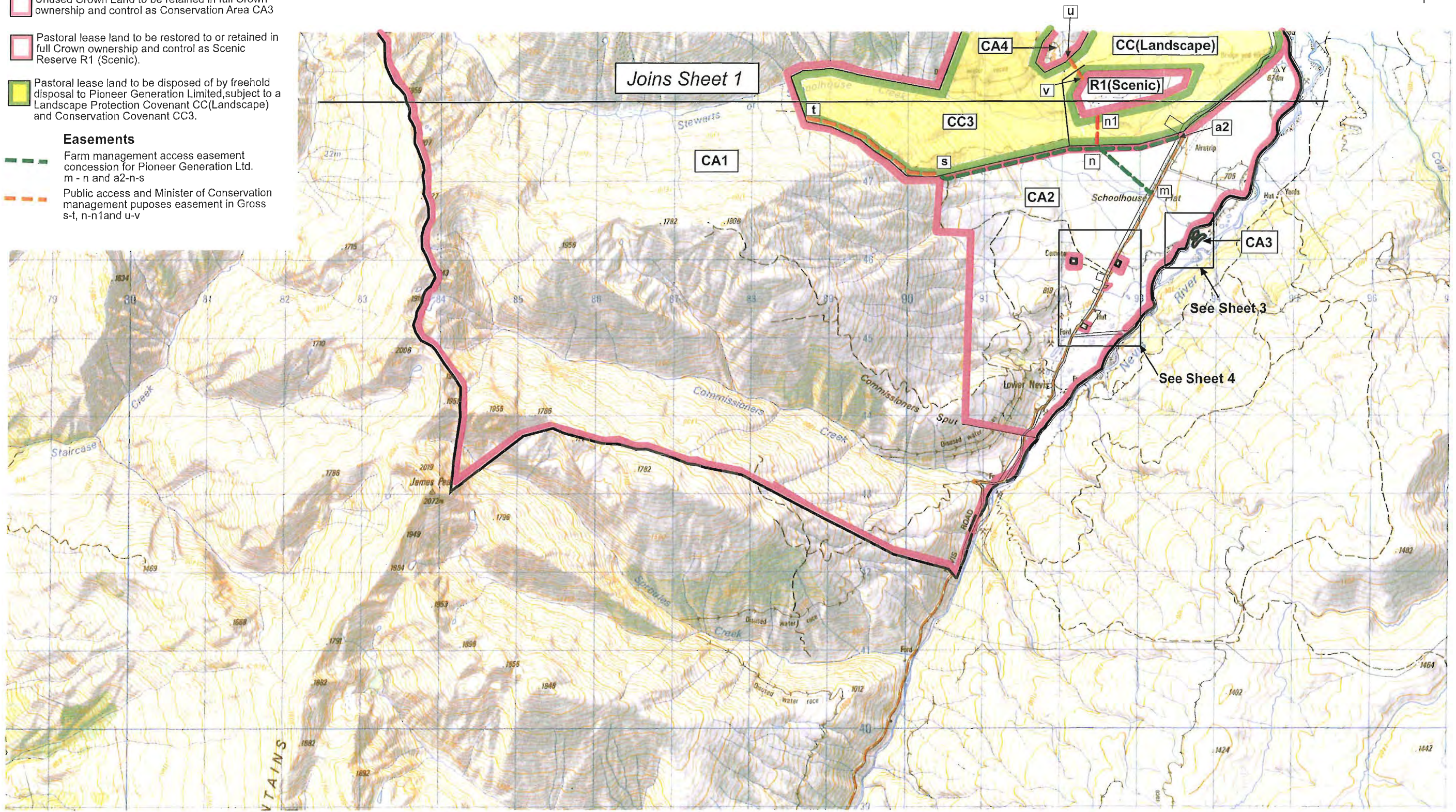
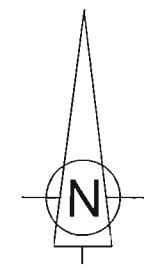
**P 241 BEN NEVIS TENURE REVIEW
PROPOSED DESIGNATIONS**

- Pastoral lease land to be restored to or retained in Crown control, as Conservation Area CA1, subject to a Heleskiing concession.
- Pastoral lease land to be restored to or retained in Crown control as Conservation Area CA2, subject to an easement concession.
- Unused Crown Land to be retained in full Crown ownership and control as Conservation Area CA3
- Pastoral lease land to be restored to or retained in full Crown ownership and control as Scenic Reserve R1 (Scenic).
- Pastoral lease land to be disposed of by freehold disposal to Pioneer Generation Limited, subject to a Landscape Protection Covenant CC(Landscape) and Conservation Covenant CC3.

Easements

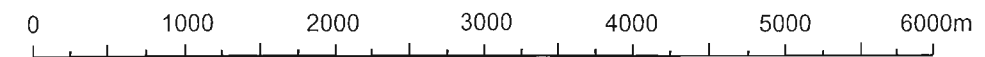
- Farm management access easement concession for Pioneer Generation Ltd. m - n and a2-n-s
- Public access and Minister of Conservation management purposes easement in Gross s-t, n-n1 and u-v

The boundaries on this plan are for illustrative purposes in showing the recommended designations.



Graphics by :
TL Survey services Ltd DUNEDIN
Certified a true copy of the
original status check plan.

Ben Nevis
Scale 1 : 50000



Version	1	2	3	4	5
Otago Land District NZMS 260 F.42	Sheet 2 of 5 Date 04/06/2009				

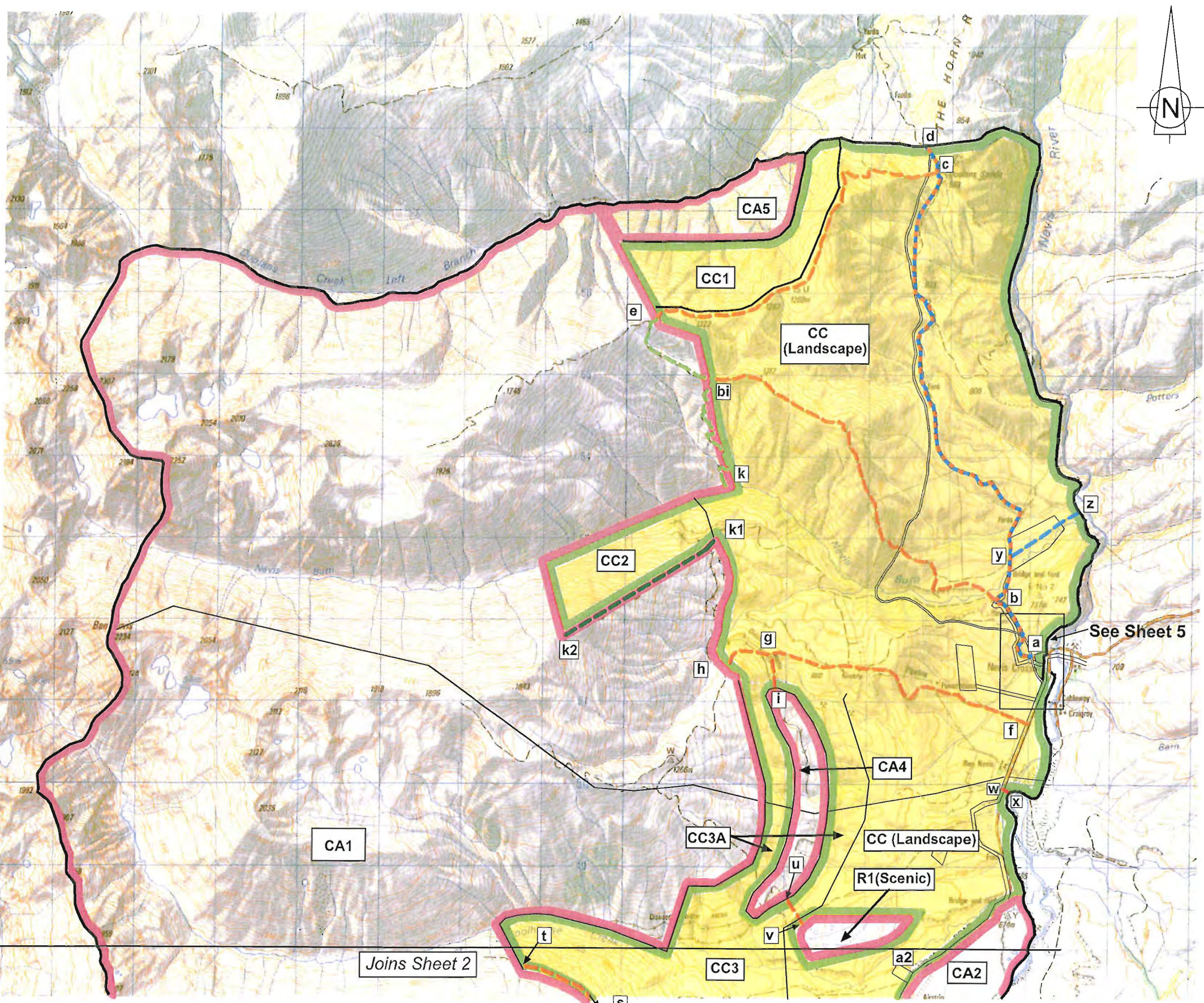
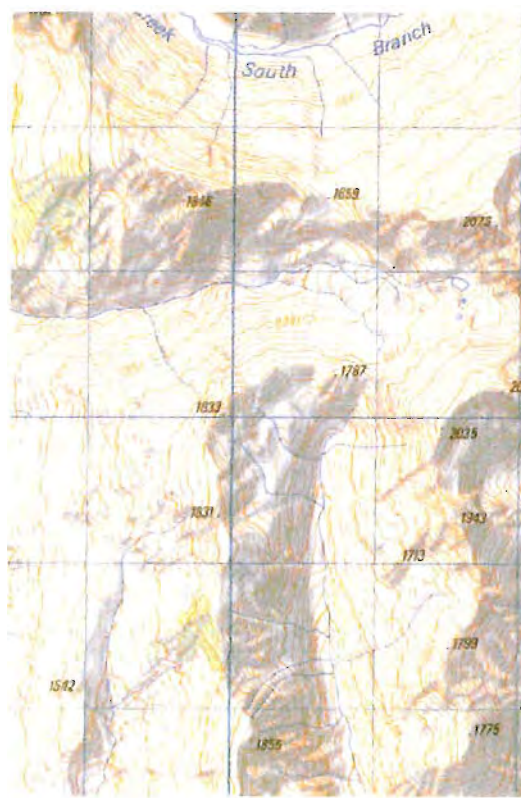
**P 241 BEN NEVIS TENURE REVIEW
PROPOSED DESIGNATIONS**

- Pastoral lease land to be restored to or retained in Crown control as conservation area CA1, subject to a Heleskiing Concession and farm management access easement concession e-b1-k and k1-k2.
- Pastoral lease land to be restored to Crown control as conservation area, subject to a grazing concession CA4 & CA5
- Pastoral lease land to be restored to or retained in full Crown ownership and control as Scenic Reserve R1 (Scenic)
- Pastoral lease land to be disposed of by freehold disposal to Pioneer Generation Limited, subject to a Landscape Protection Covenant CC (Landscape) and Conservation Covenant CC1, CC2, CC3 and CC3A

Easement

- Public access and Minister of Conservation management easement in gross a-b-y-c-d, b-bi, c-e, f-g-h, g-i, s-t, u-v, and w-x
- Public vehicle access easement in gross a-b-y-c-d
- Farm management access easement concession for Pioneer Generation Ltd. e-bi-k and k1-k2
- Otago Fish & Game Council management purposes easement a-b-y-c-d and y-z

The boundaries on this plan are for illustrative purposes in showing recommended designations.



See Sheet 5

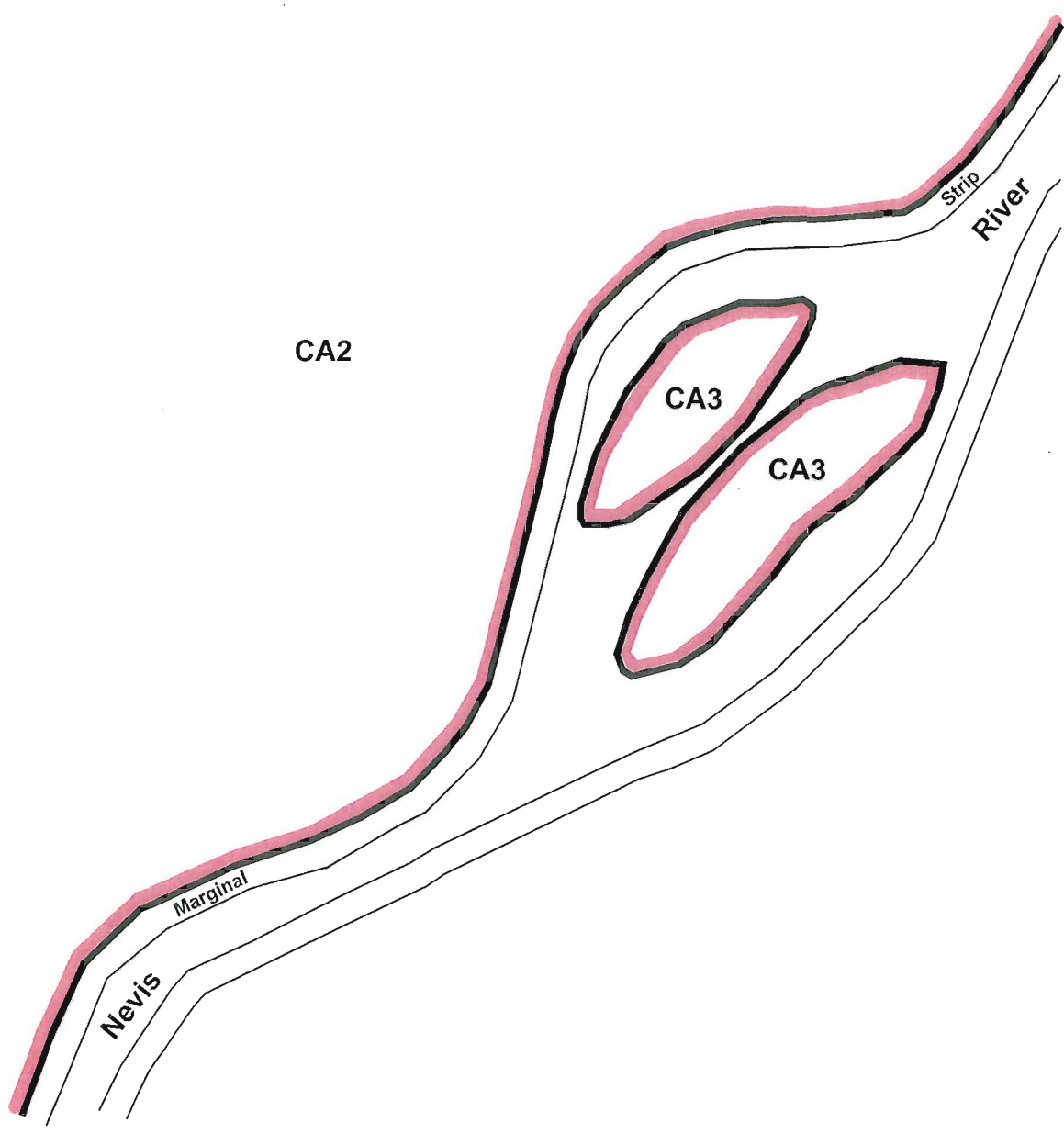
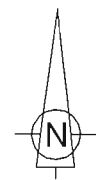
Joins Sheet 2

Graphics by :
TL Survey services Ltd DUNEDIN
Certified a true copy of the
original status check plan.



Ben Nevis
Scale 1 : 50000

Version	1	2	3	4	5
Otago Land District NZMS 260 F.42	Sheet 1 of 5 Date 04/06/2009				

The boundaries on this plan are for illustrative purposes in showing the recommended designations.



**P 241 BEN NEVIS TENURE REVIEW
PROPOSED DESIGNATIONS**

-  Pastoral lease land to be restored to or retained in Crown control as conservation area, subject to an easement concession CA2
-  Pastoral lease land to be restored to or retained in full Crown ownership and control as conservation area CA3

Version	1	2	3	4	5
Otago Land District	Sheet 3 of 5				
NZMS 260 F.42	Date 04/06/2009				

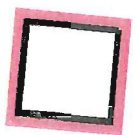
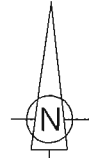
Certified a true copy of the original status check plan.

Ben Nevis
Scale 1:5000



Graphics by :
TL Survey Services Ltd
DUNEDIN

The boundaries on this plan are for illustrative purposes in showing the recommended designations.



Existing Conservation Land

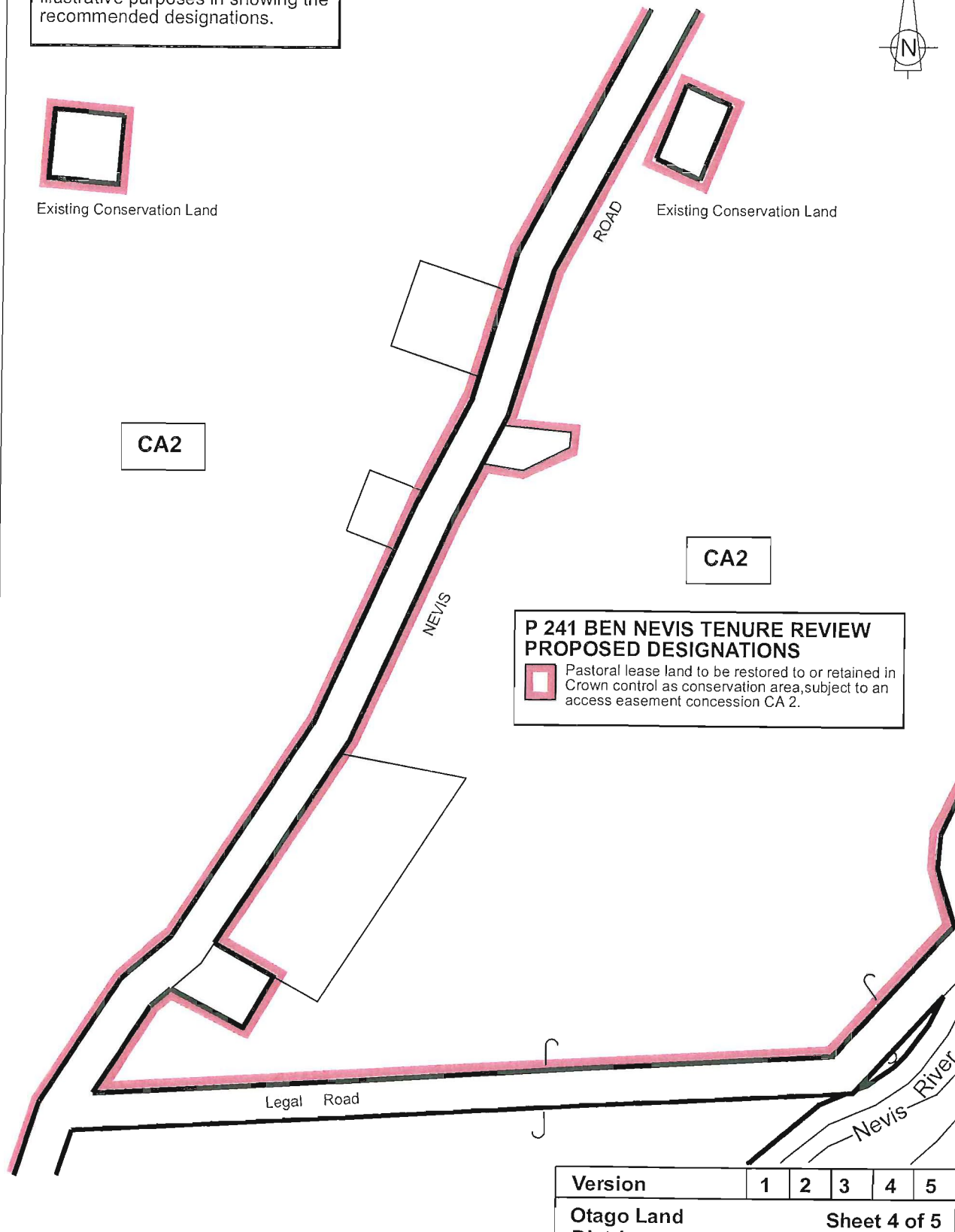


Existing Conservation Land

CA2

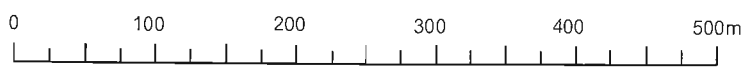
CA2

**P 241 BEN NEVIS TENURE REVIEW
PROPOSED DESIGNATIONS**
 Pastoral lease land to be restored to or retained in Crown control as conservation area, subject to an access easement concession CA 2.



Certified a true copy of the original status check plan.

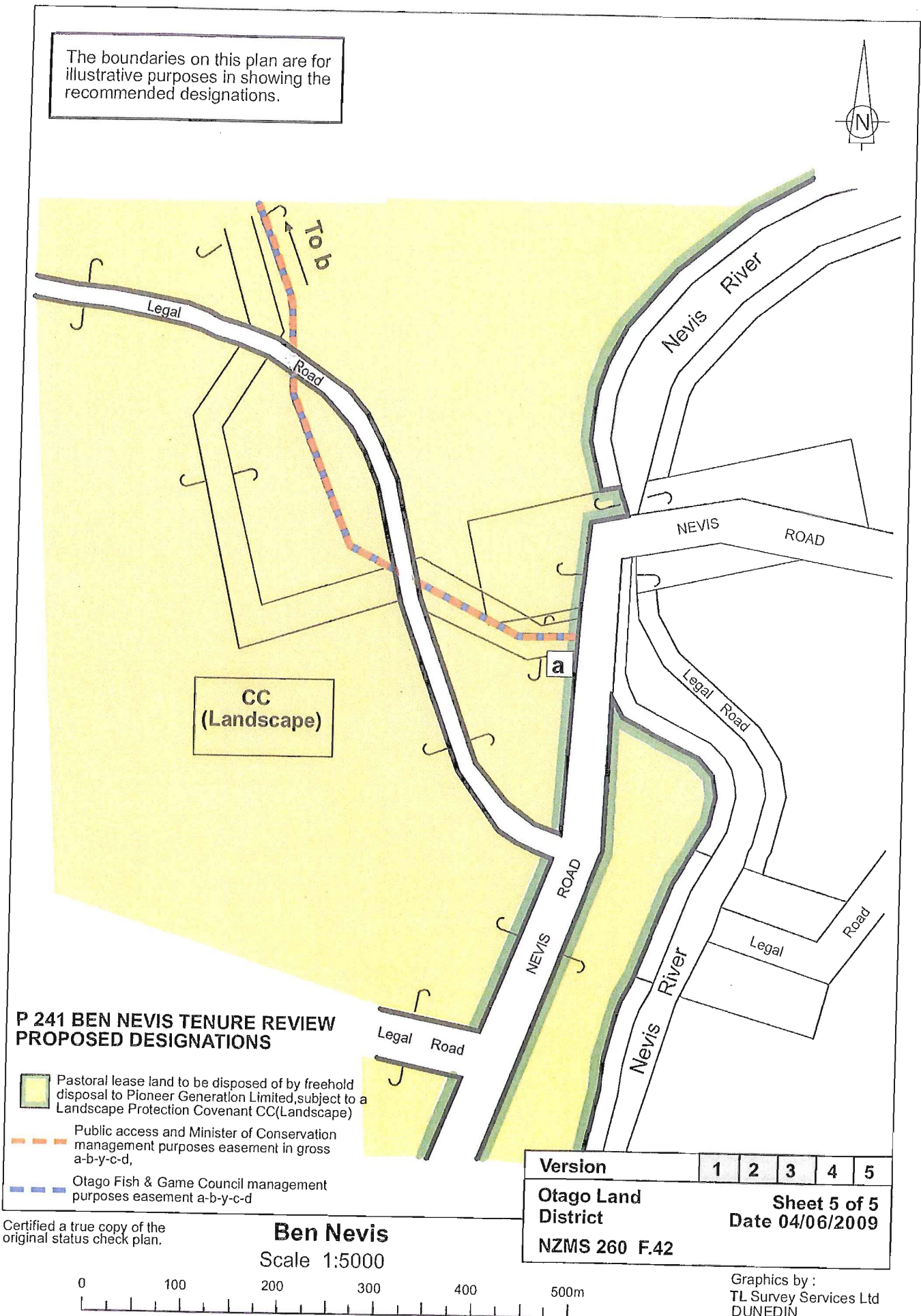
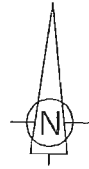
Ben Nevis
Scale 1:5000



Version	1	2	3	4	5
Otago Land District	Sheet 4 of 5				
NZMS 260 F.42	Date 04/06/2009				

Graphics by :
TL Survey Services Ltd
DUNEDIN

The boundaries on this plan are for illustrative purposes in showing the recommended designations.



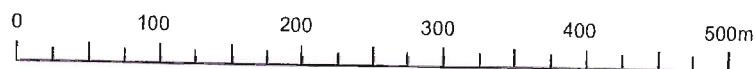
**P 241 BEN NEVIS TENURE REVIEW
PROPOSED DESIGNATIONS**

- Pastoral lease land to be disposed of by freehold disposal to Pioneer Generation Limited, subject to a Landscape Protection Covenant CC(Landscape)
- Public access and Minister of Conservation management purposes easement in gross a-b-y-c-d,
- Otago Fish & Game Council management purposes easement a-b-y-c-d

Version	1	2	3	4	5
Otago Land District	Sheet 5 of 5				
NZMS 260 F.42	Date 04/06/2009				

Certified a true copy of the original status check plan.

Ben Nevis
Scale 1:5000



Graphics by :
TL Survey Services Ltd
DUNEDIN