

## Crown Pastoral Land Tenure Review

Lease name : BERWEN STATION

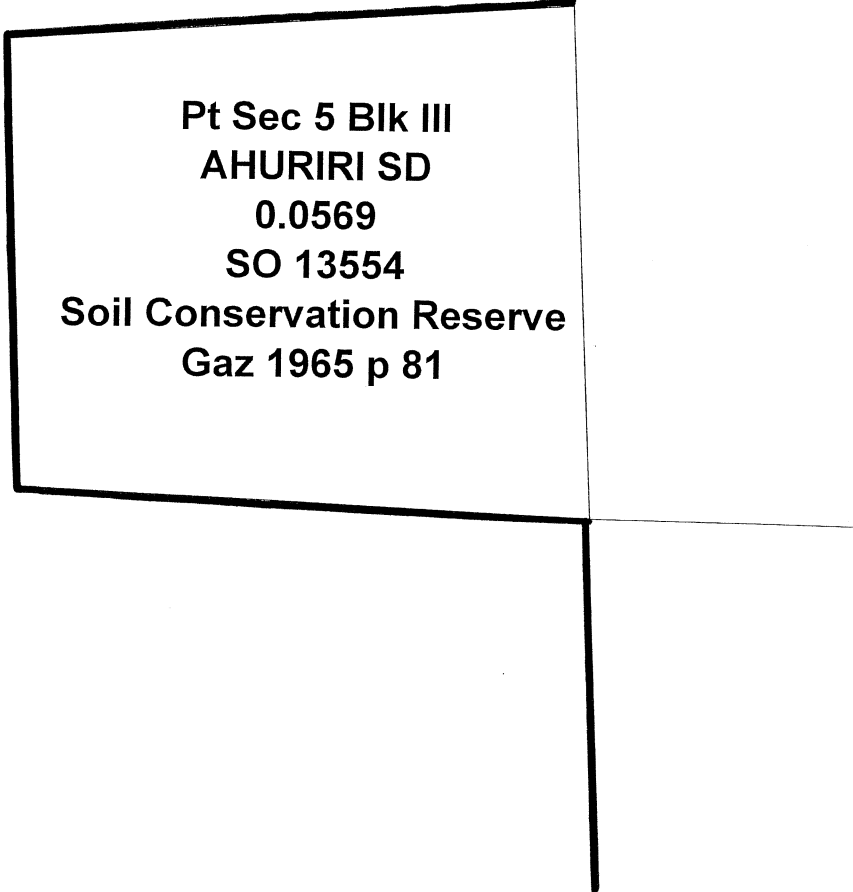
Lease number : PO 209

### Plans attaching to Due Diligence Report - Maps 3 & 4

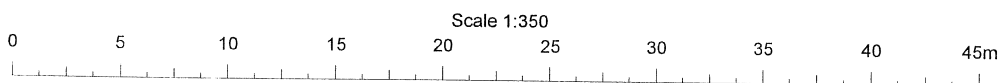
These plans attach to and support the Due Diligence Report.

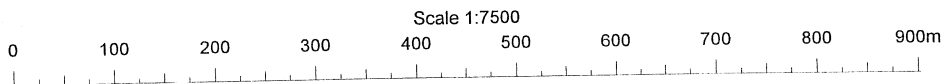
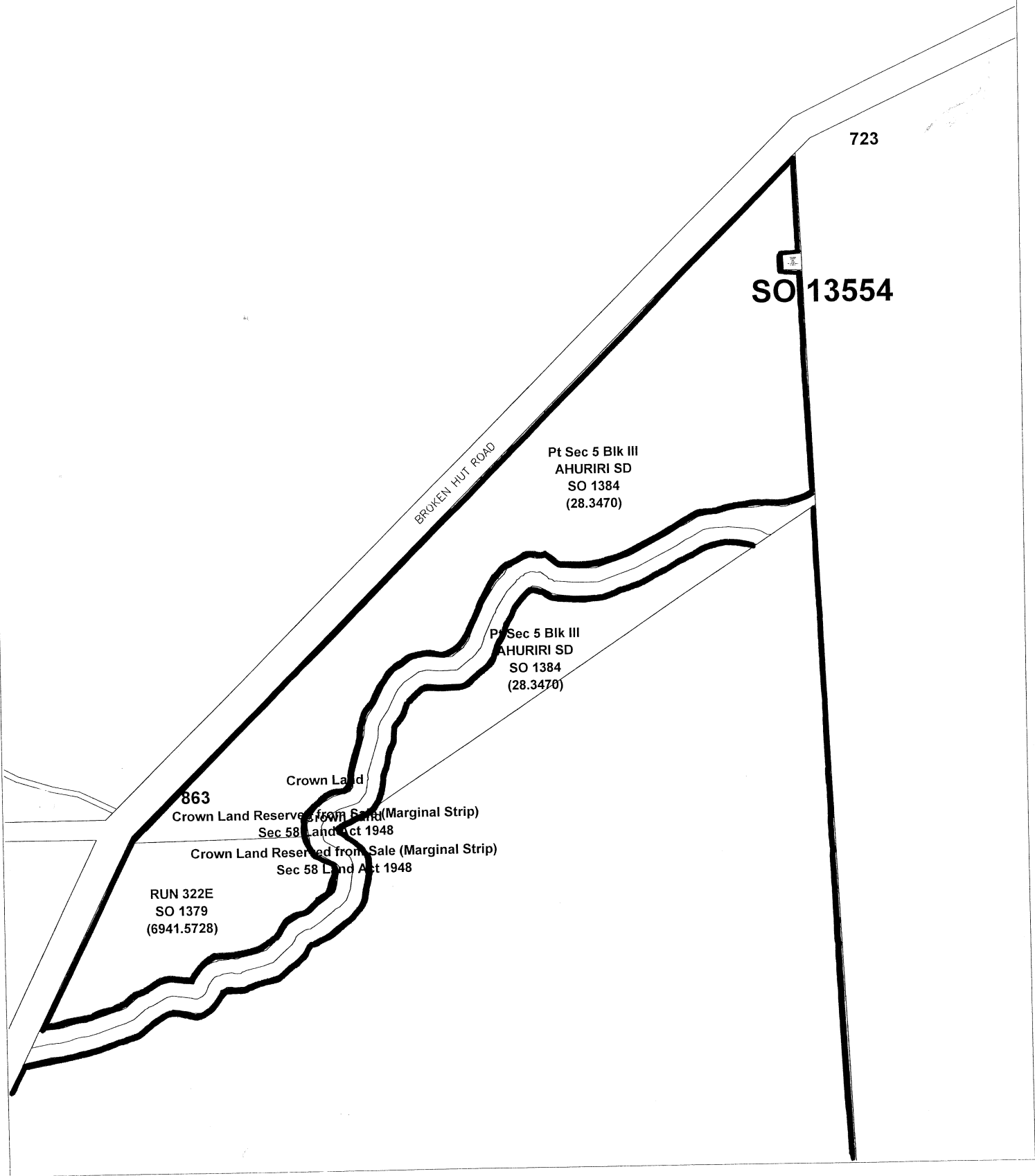
They are released under the Official Information Act 1982.

January 05



**Pt Sec 5 Blk III  
AHURIRI SD  
0.0569  
SO 13554  
Soil Conservation Reserve  
Gaz 1965 p 81**





“RELEASED UNDER THE OFFICIAL INFORMATION ACT”

