

Crown Pastoral Land Tenure Review

Lease name : Birchwood

Lease number : PO 075

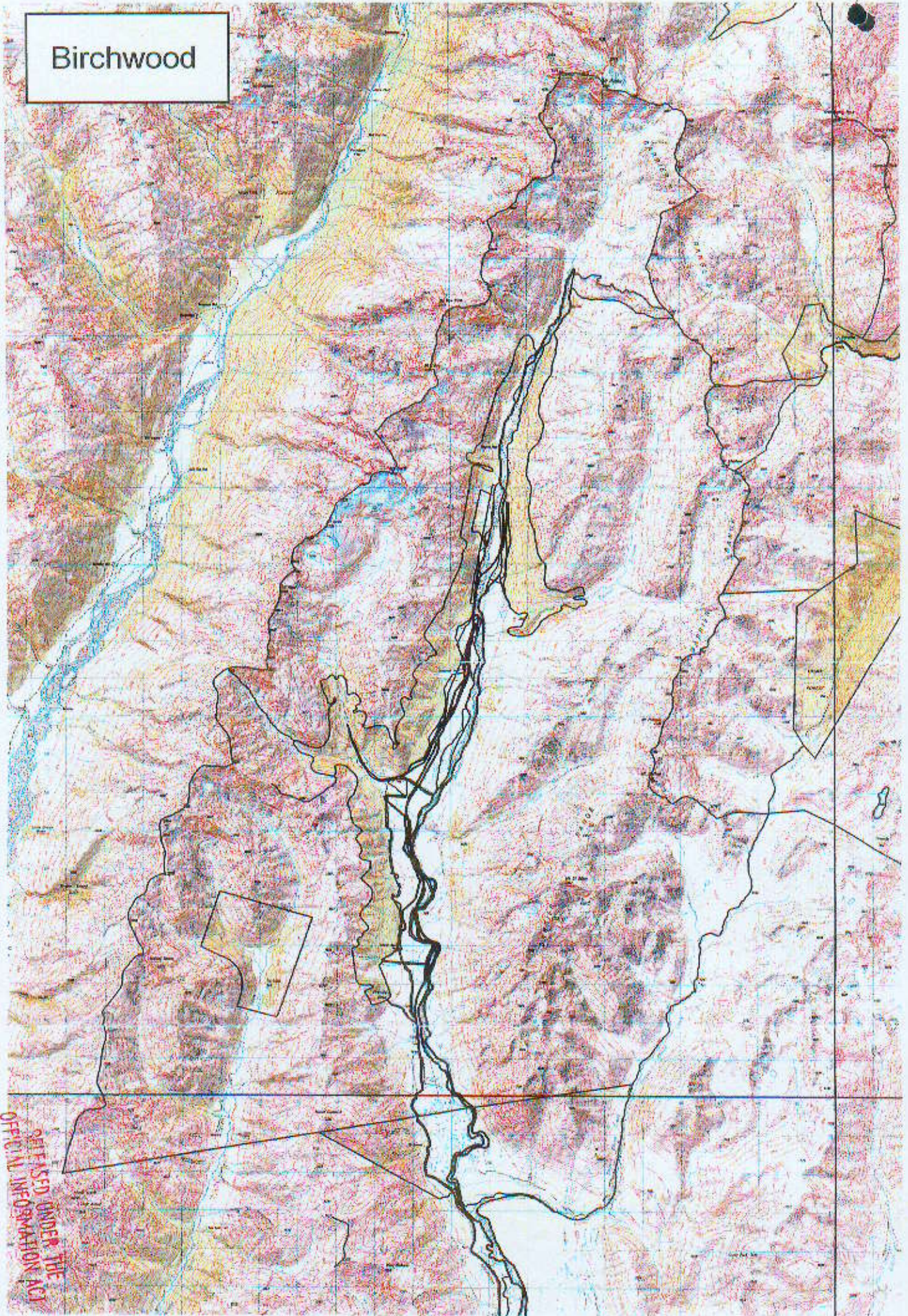
Plans attaching to the conservation resources report

These plans attach to and support the conservation resources report provided by the Department of Conservation.

They are released under the Official information Act 1982.

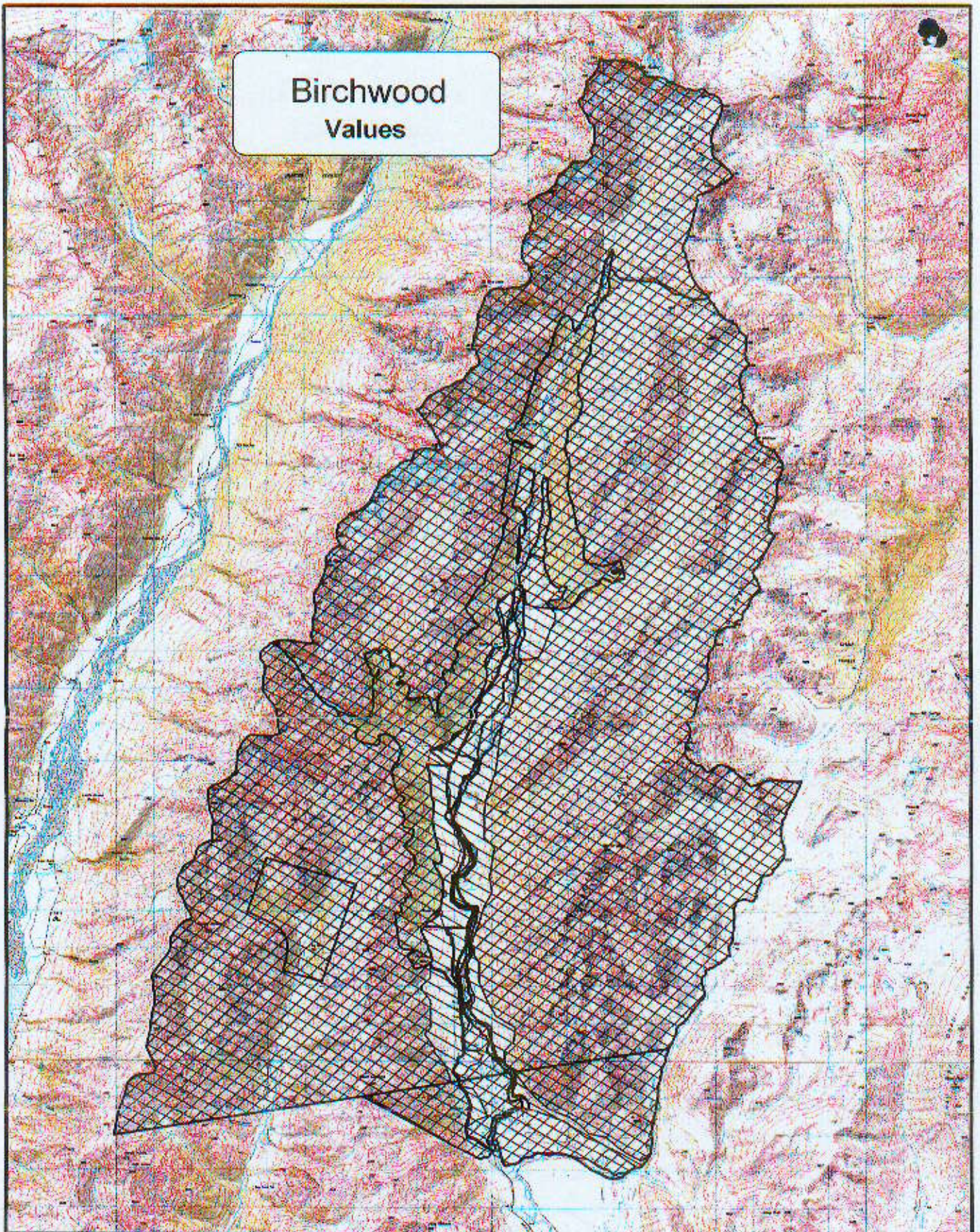
Copied October 2002



Birchwood



RECEIVED UNDER THE
OFFICIAL INFORMATION ACT

Birchwood Values



-  Birchwood
-  Landscape Values
-  Ecological Values

0.5 1 1.5 2 Kilometers



Map prepared: 5 March 1999
Topographical map sheet 1:50,000 NZMS 260 J39



OFFICIAL INFORMATION ACT
REQUESTS UNDER THE

IRISHMAN CREEK GORGE



LEGEND

- Fishman Creek Pastoral Lease
- Land Type Boundary (Iymn 1993) see text for code explanation
- Geosynclinal Unit
- Main Moraine Ridges
- Washboard Moraines
- Ice Contact Surface
- Ice Contact Terraces

Fig.

IRISHMAN CREEK PASTORAL LEASE

LANDFORMS