



Land Information  
New Zealand  
*Toitū te whenua*

## Crown Pastoral Land Tenure Review

Lease name : BLUE MOUNTAIN

Lease number : PT 031

## Substantive Proposal Designations Plan

A Designations Plan forms part of the Tenure Review Substantive Proposal. The attached plan is a copy of the Designations Plan included in the Substantive Proposal for the above review. The Substantive Proposal has been accepted by the Leaseholder.

A summary of the Substantive Proposal is available as part of a notice of acceptance document lodged for registration against the Landonline computer register of the leasehold Certificate of Title being **OT386/130**. The Notice of Acceptance is a public document searchable by licensed remote access to Landonline.

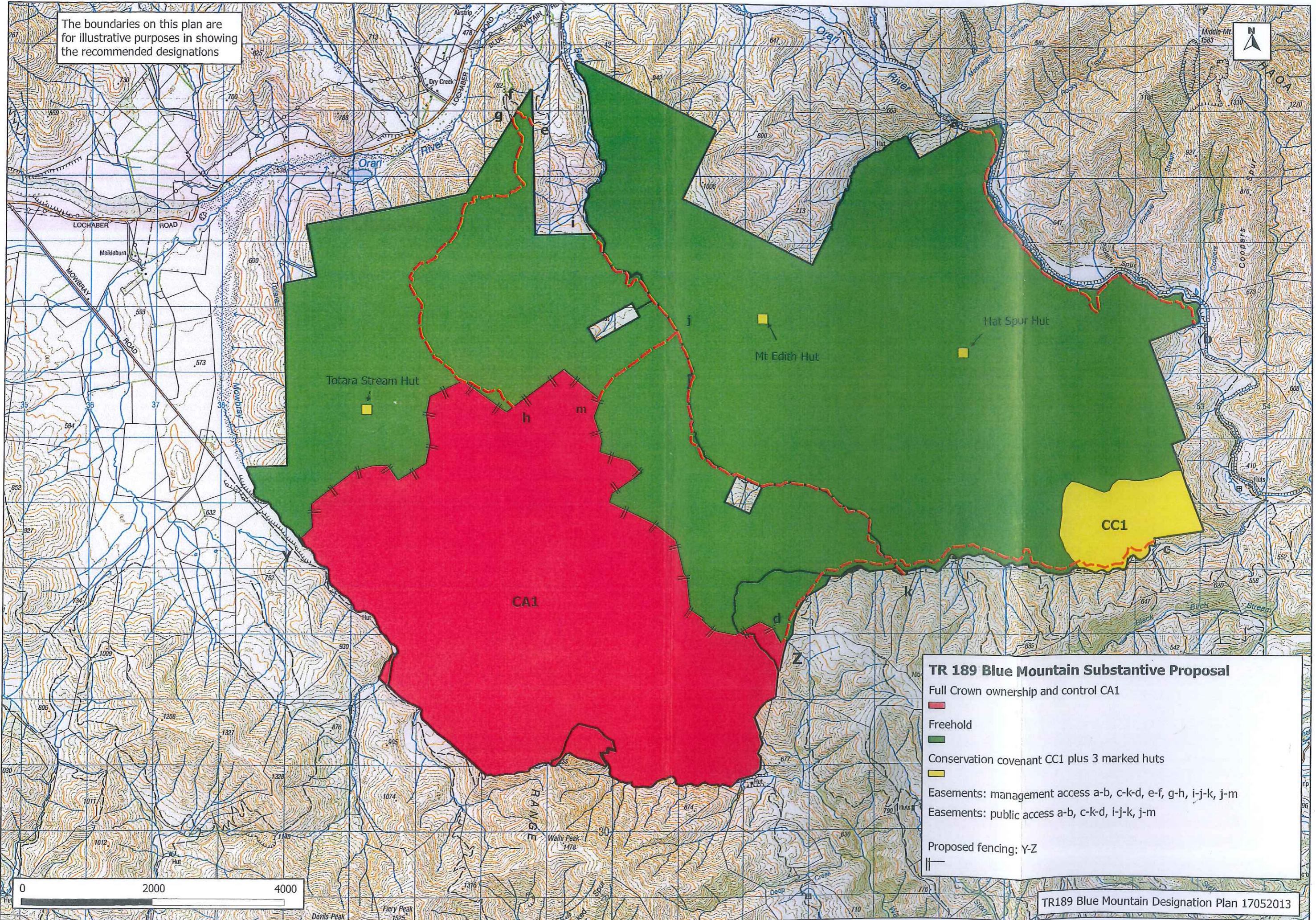
The report attached is released under the Official Information Act 1982.

July

14



The boundaries on this plan are for illustrative purposes in showing the recommended designations

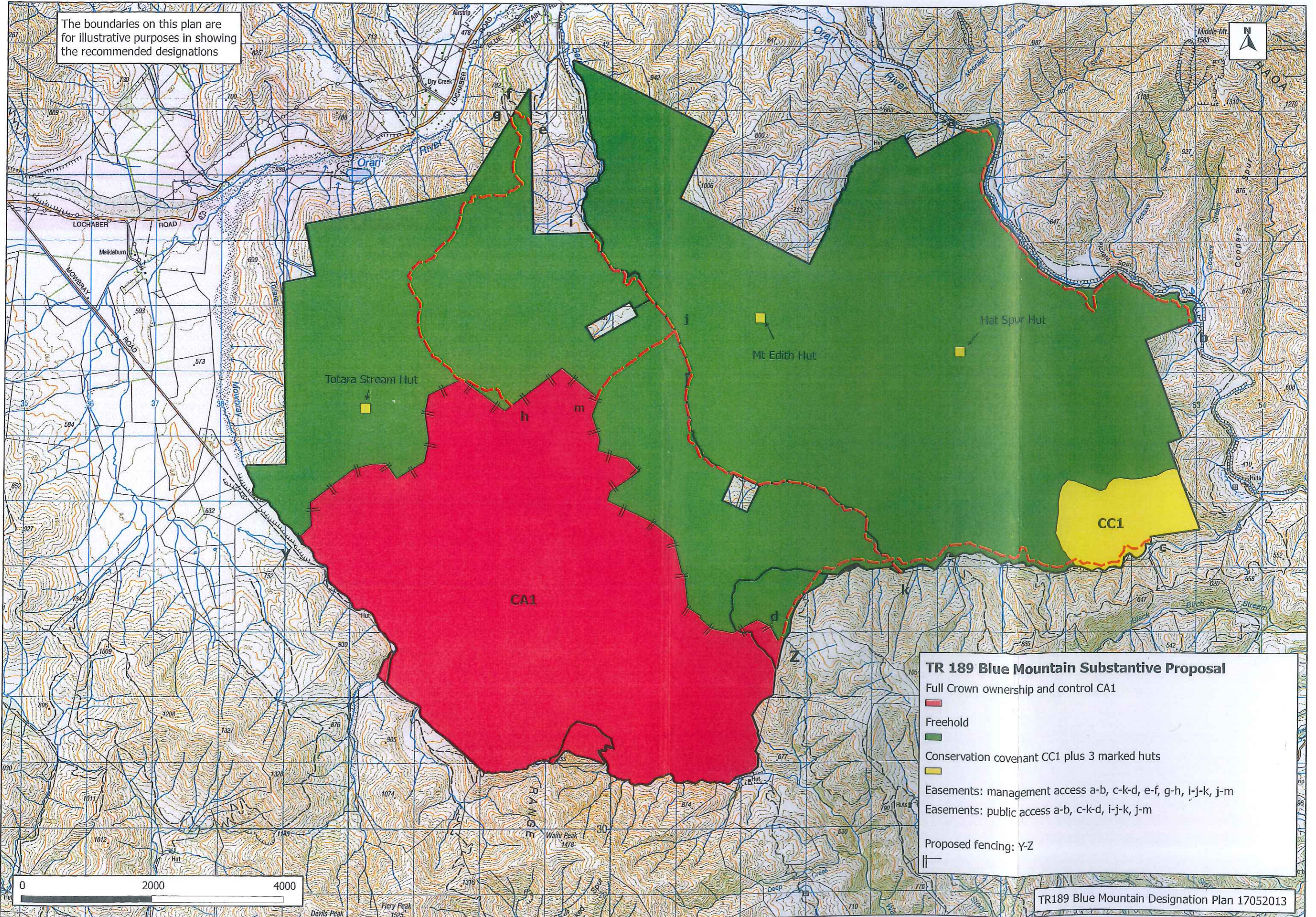


**TR 189 Blue Mountain Substantive Proposal**

- Full Crown ownership and control CA1
- Freehold
- Conservation covenant CC1 plus 3 marked huts
- Easements: management access a-b, c-k-d, e-f, g-h, i-j-k, j-m
- Easements: public access a-b, c-k-d, i-j-k, j-m
- Proposed fencing: Y-Z



The boundaries on this plan are for illustrative purposes in showing the recommended designations



**TR 189 Blue Mountain Substantive Proposal**

- Full Crown ownership and control CA1
- Freehold
- Conservation covenant CC1 plus 3 marked huts
- Easements: management access a-b, c-k-d, e-f, g-h, i-j-k, j-m
- Easements: public access a-b, c-k-d, i-j-k, j-m
- Proposed fencing: Y-Z

