

## **Crown Pastoral Land Tenure Review**

**Lease name : BRANCH CREEK**

**Lease number : PO 052**

### **Conservation Resources Report - Part 2**

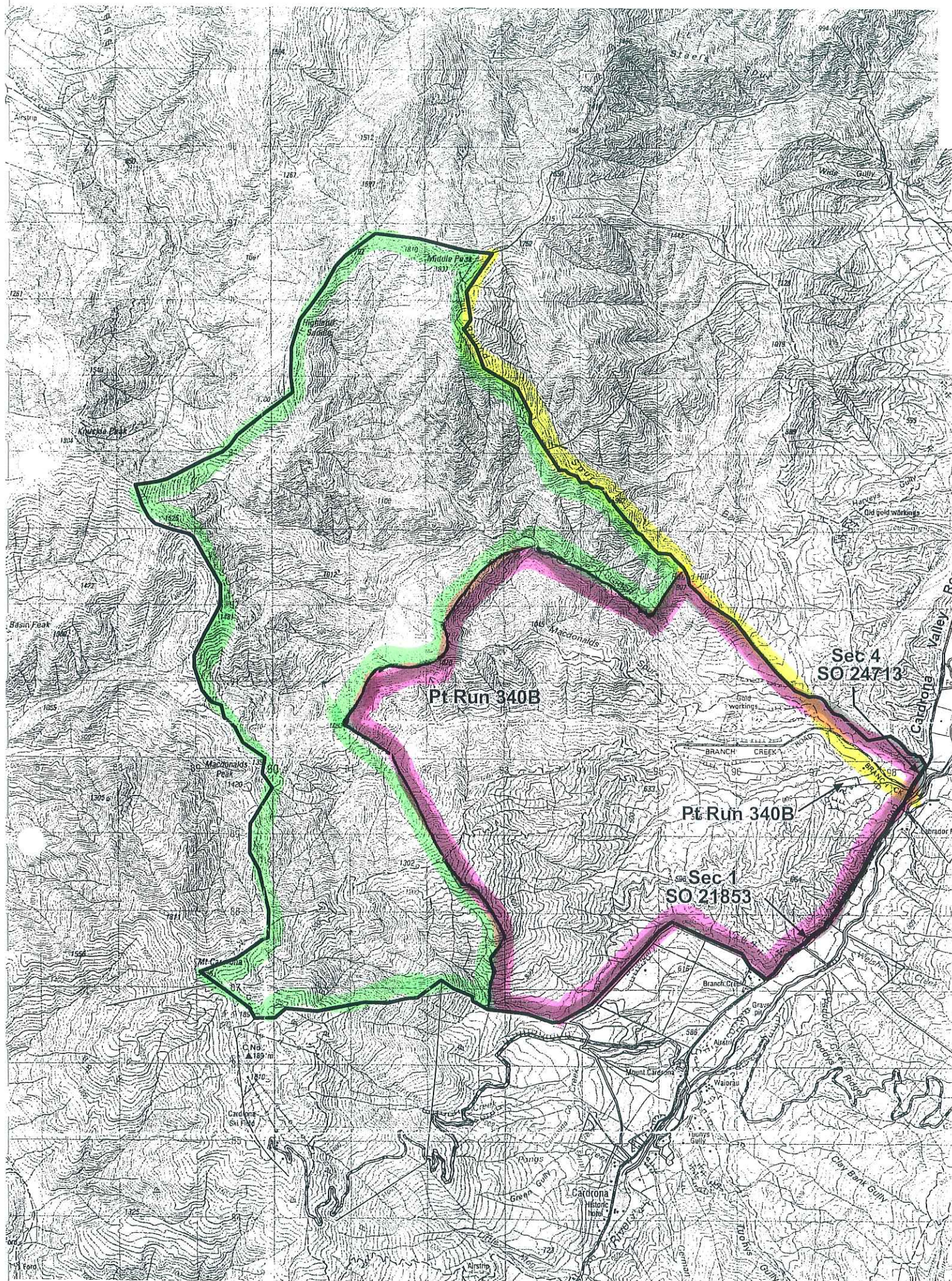
As part of the process of Tenure Review, advice on significant inherent values within the pastoral lease is provided by Department of Conservation officials in the form of a Conservation Resources Report. This report is the result of outdoor survey and inspection. It is a key piece of information for the development of a preliminary consultation document.

Note: Plans which form part of the Conservation Resources Report are published separately.

These documents are all released under the Official information Act 1982.

**July**

**06**



Map showing the preferred allocation of public conservation land and freehold land (green and red outlines respectively) and important recreational access routes (yellow)

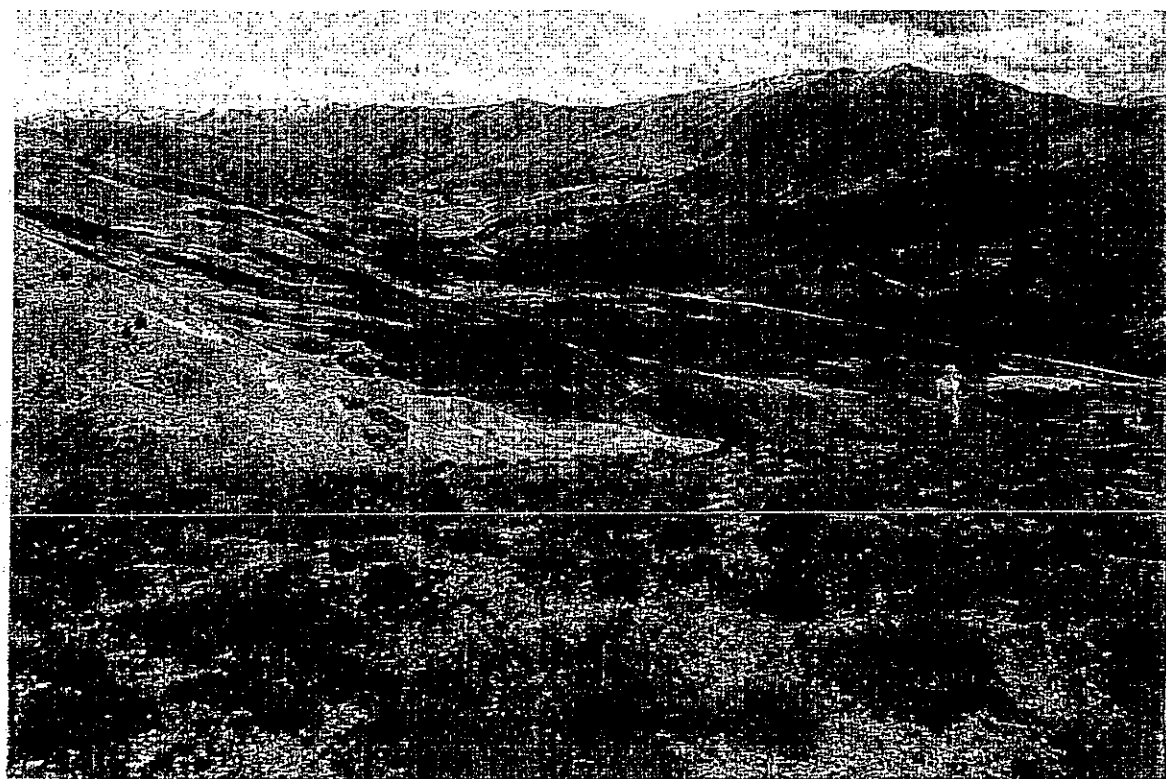


Fig. 1 This view is from Little Criffel at the north end of the Pisa Range, looking up the Cardrona Valley. The high, snow covered ground (skyline, right) includes the Cardrona Skifield, Mt Cardrona and Macdonalds Peak on the western boundary of Branch Creek pastoral lease. Branch Creek includes most of the ground in shadow on the far side of the valley and rises from about 500m at the homestead to 1,936m on Mt Cardrona.

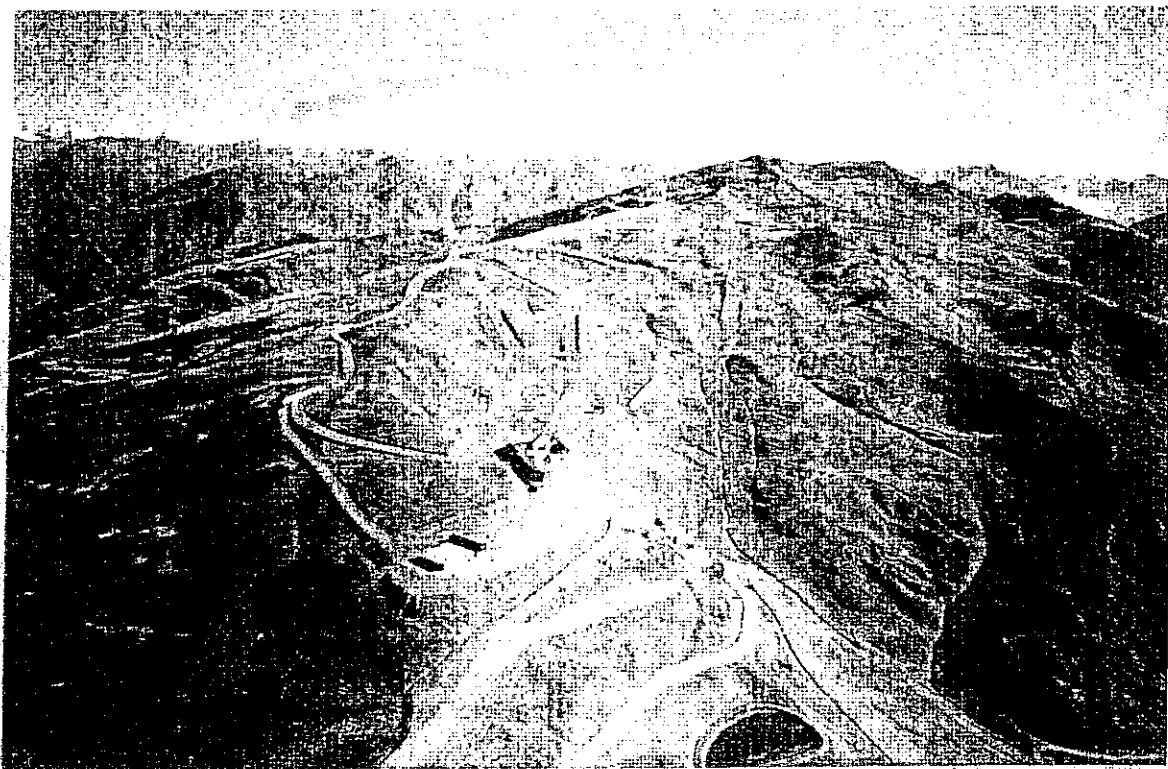


Fig. 2 The Cardrona Skifield is a popular family field which brings many recreational users to the valley. The base buildings are clearly seen in this view in which Branch Creek pastoral lease land is situated to the right (or north) of the skifield. This tenure review should consider the potential recreational use of pastoral lease land in the context of all other neighbouring opportunities.

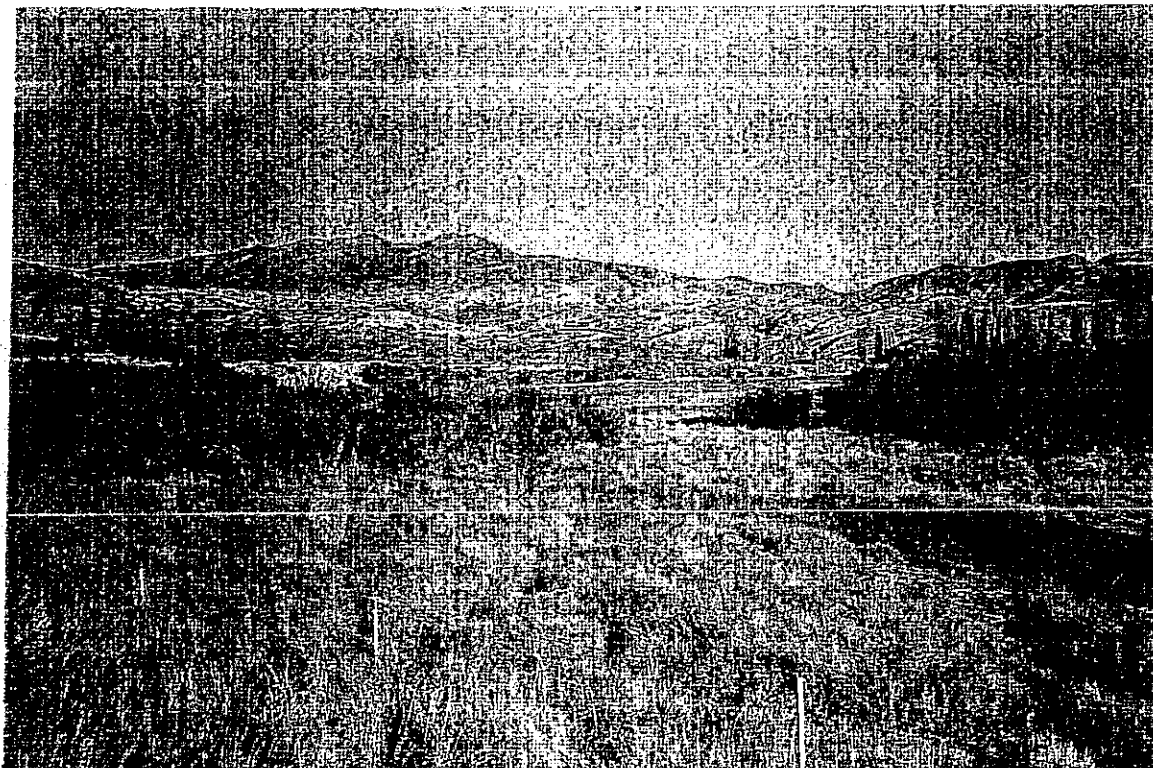


Fig. 3 Branch Creek pastoral lease covers about 6,000ha and includes some alluvial soils on the valley floor. In the middle distance are downlands on Pleistocene gravels which have been worked for gold in places, and in the distance can be seen the higher tussock grasslands extending up to Mt Cardrona (1,936m) and Macdonalds Peak (1,398m) which are situated near the middle of what has been called 'Cardrona Range'.



Fig. 4 Macdonalds Peak and the upper catchments of Boundary and Macdonalds Creeks, and Macdonalds Spur are central in this view. The high ground is characterised by Dunstan Steepland Soils, classified LUC Class VIIe, while the foreground shows LUC Class VI land on the downlands which are typical, but not actually part of Branch Creek pastoral lease. Class VI land is suitable to become freehold, because with appropriate maintenance it can be managed in a way that is ecologically sustainable.

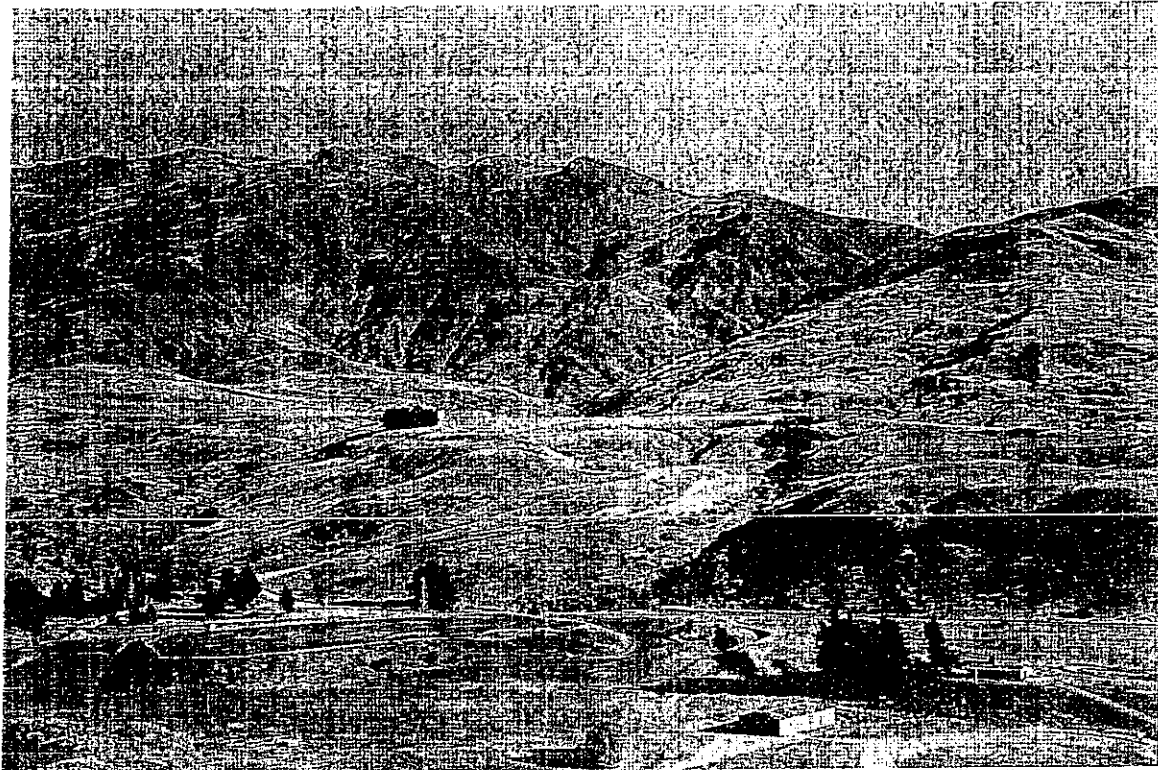


Fig. 5 This view shows an extensive area of Dunstan steep-land soils (LUC Class VIIe on the higher country above about 1,000m. These soils have serious limitations for pastoral use and are almost certainly not capable of ecologically sustainable pastoral use. The tussock grasslands do on the other hand have significant inherent values so such areas should be returned to full Crown ownership and control.

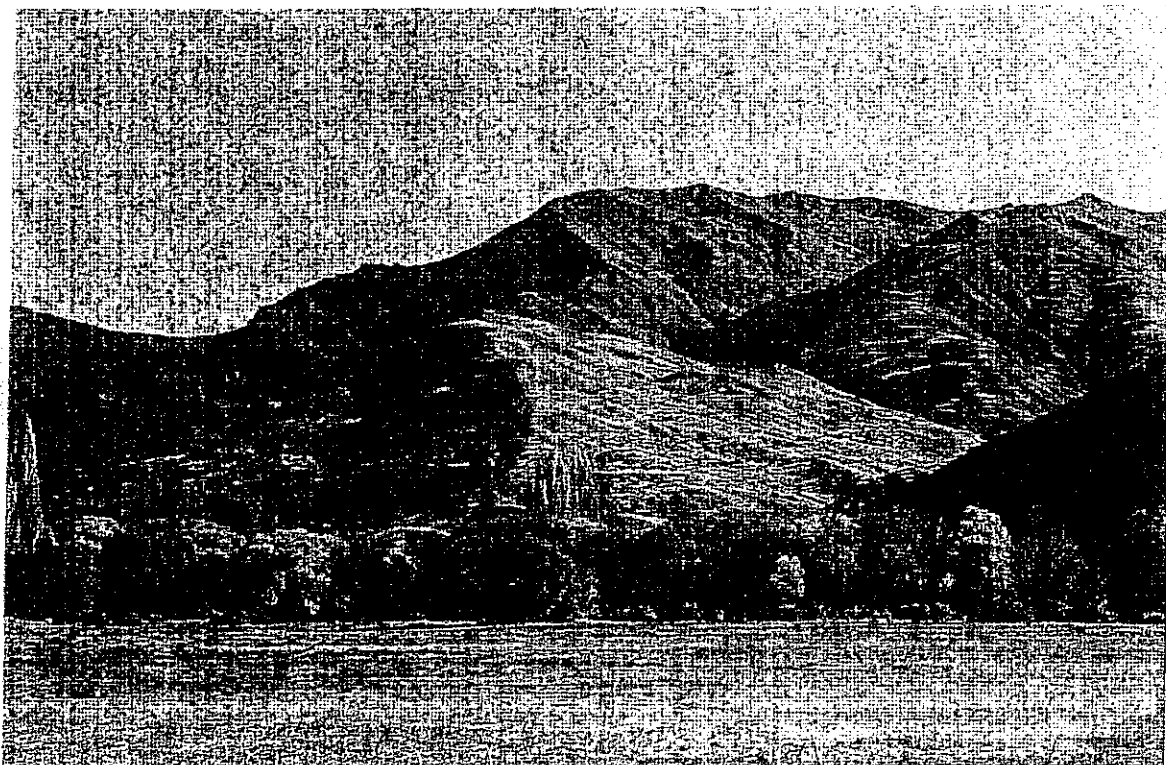


Fig. 6 This view from the Branch Creek Road near Branch Burn Bridge shows the Round Hill Spur leading directly to Middle Peak. This route, possibly in combination with the marginal strip along the creekbed, would provide good tramping access to the middle section of the 'Cardrona Range'.