

Crown Pastoral Land Tenure Review

Lease name : BRANCH CREEK

Lease number : PO 052

Conservation Resources Report - Part 3

As part of the process of Tenure Review, advice on significant inherent values within the pastoral lease is provided by Department of Conservation officials in the form of a Conservation Resources Report. This report is the result of outdoor survey and inspection. It is a key piece of information for the development of a preliminary consultation document.

Note: Plans which form part of the Conservation Resources Report are published separately.

These documents are all released under the Official information Act 1982.

July

06

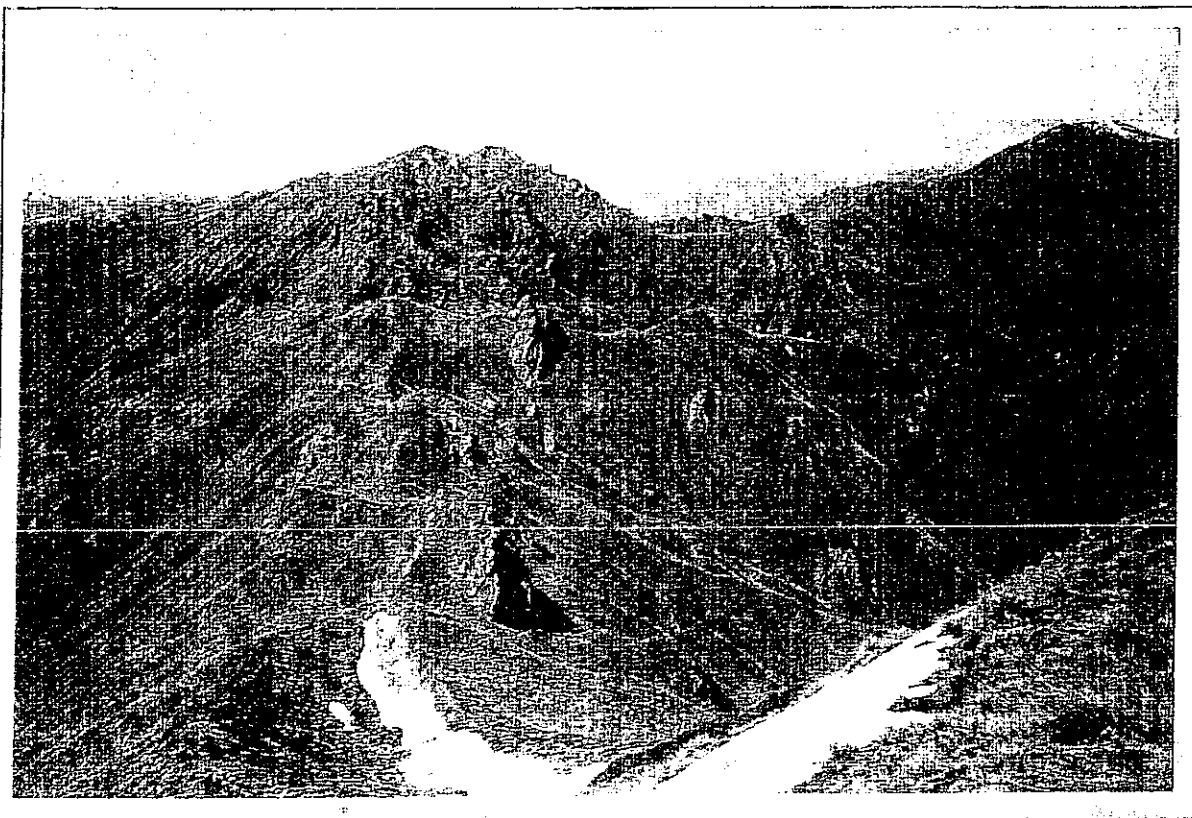


Fig. 7 Having gained the 'Cardrona Range' crest at Middle Peak (far right in this view from Roys Peak above Lake Wanaka) it is possible to traverse along the ridge to Mt Alpha (skyline, centre) and across to the top of the popular walk to Roys Peak. Although easily accessible, such trips offer both challenge and a sense of remoteness. New opportunities such as this are important as they increase the range of options available from increasingly busy tourist centres like Wanaka and Queenstown.



Fig. 8 Both Mt Alpha and Roys Peak offer superb views over Lake Wanaka and the Upper Clutha area and are a fitting reward for the effort expended in gaining and traversing the 'Cardrona Range'. Such trips are part of the developing network of new opportunities which is essential to meet the needs of both visitors and New Zealanders. Tenure review offers a unique chance to add to the existing limited range of options.

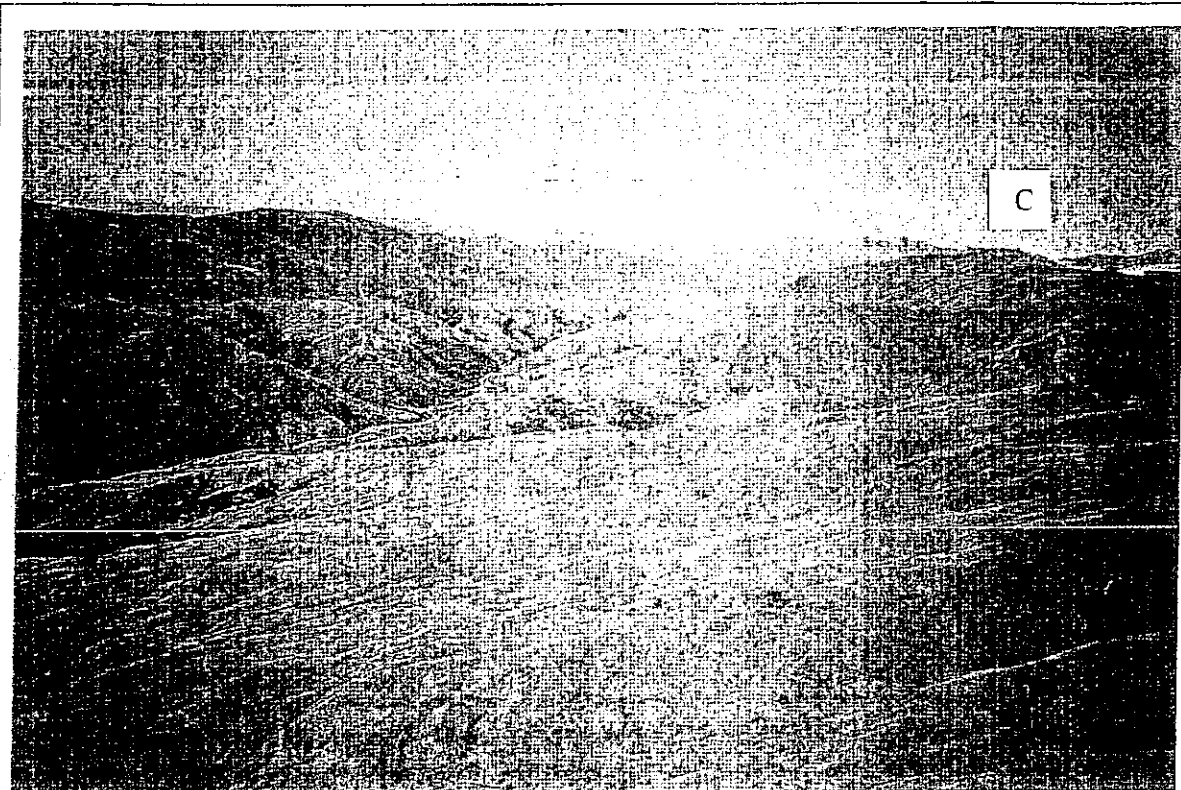


Fig. 9 This view shows the upper part of the Crown Range Road heading up the Cardrona valley (left of centre). Parallel to this is a recreational option to traverse southwards from Macdonalds Peak along the 'Cardrona Range' towards Crown Peak. This peak (C) can just be made out to the right in this view, beyond which can be seen the Remarkables. This illustrates the extent of vistas to be had from the little known 'Cardrona Range'



Fig. 10 Parts of the traverse south from Macdonalds Peak provide a true ridge crest experience, with views into the Cardrona Valley to the east and spectacular views into the valleys of the Soho and Golspie to the north. This illustrates another challenging and apparently remote experience which is also within easy reach of Queenstown. This trip could in time also become available to the public through tenure review if the wider context of each individual review is brought together within a recreational framework.

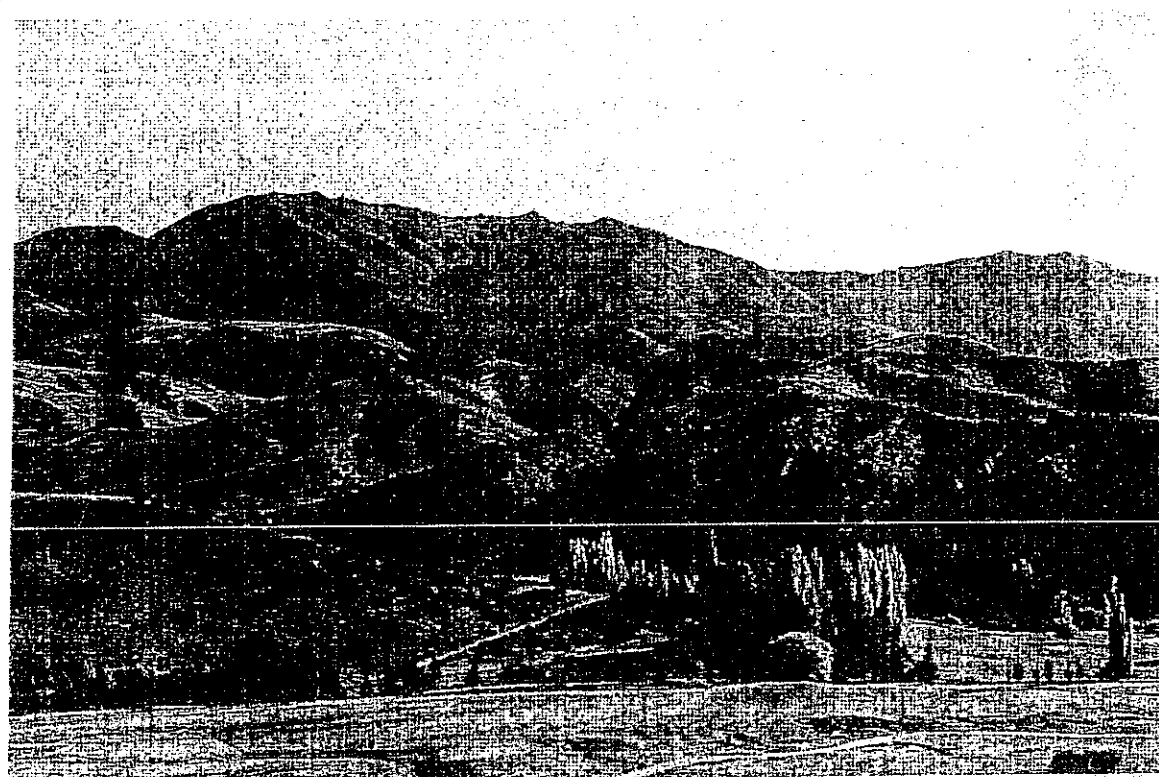


Fig. 11 There was extensive gold mining activity with sluicing in both Boundary Creek and Branch Burn valleys. Sluicings can be seen in the Pleistocene gravels on the right in this view. This sluicing was powered by water which was delivered from water races. The line of one such race is marked by a horizontal line of trees across the downland slopes (middle distance, left). The best of these goldmining relics should be protected as an Historic Reserve.

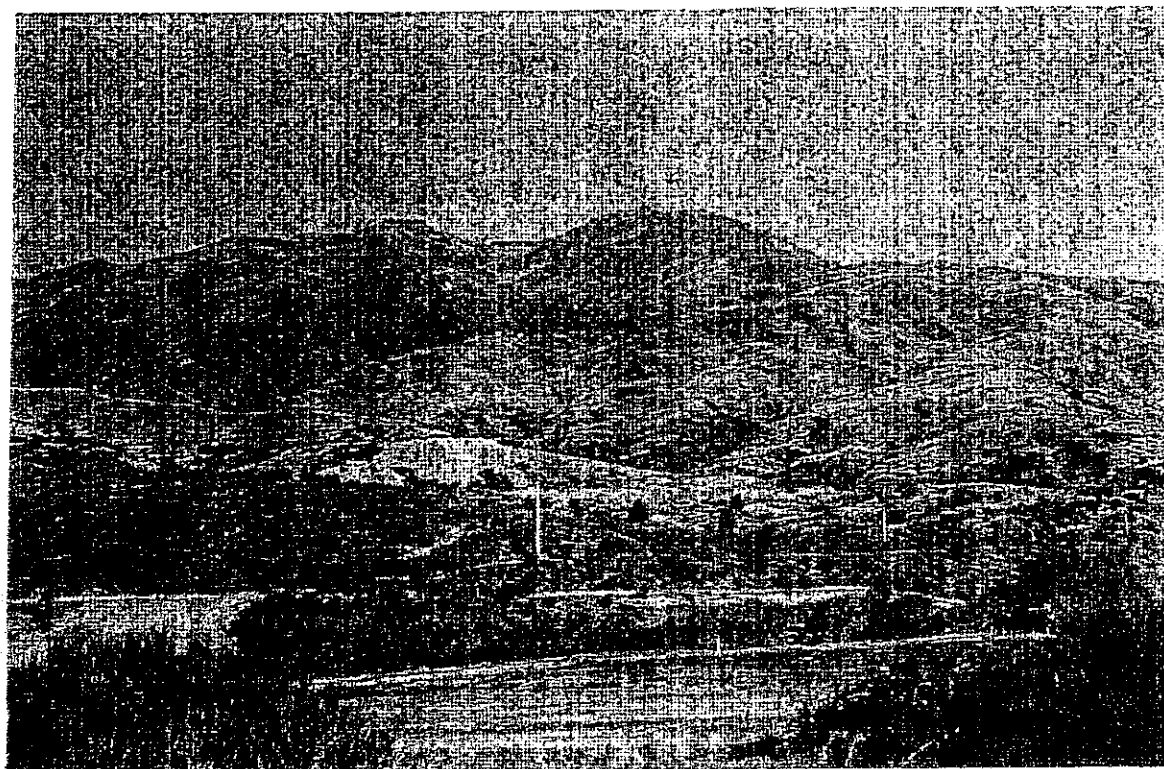


Fig. 12 Some of the goldmining remains can be clearly seen from the Cardrona Road. Quite extensive workings can be seen in the gravels beyond the power pole in the centre of this view. Although protection as Historic Reserve would be appropriate, continued sheep grazing could probably continue as this is unlikely to do much damage to the mining relics.



Fig. 13 The high country in the upper catchments of Macdonalds Creek and Branch Burn is not capable of sustainable pastoral use and is prone to erosion. It does however, have highly significant inherent natural and landscape values. This makes a fine setting for recreation and justifies the return of such landscape to full Crown ownership and control.

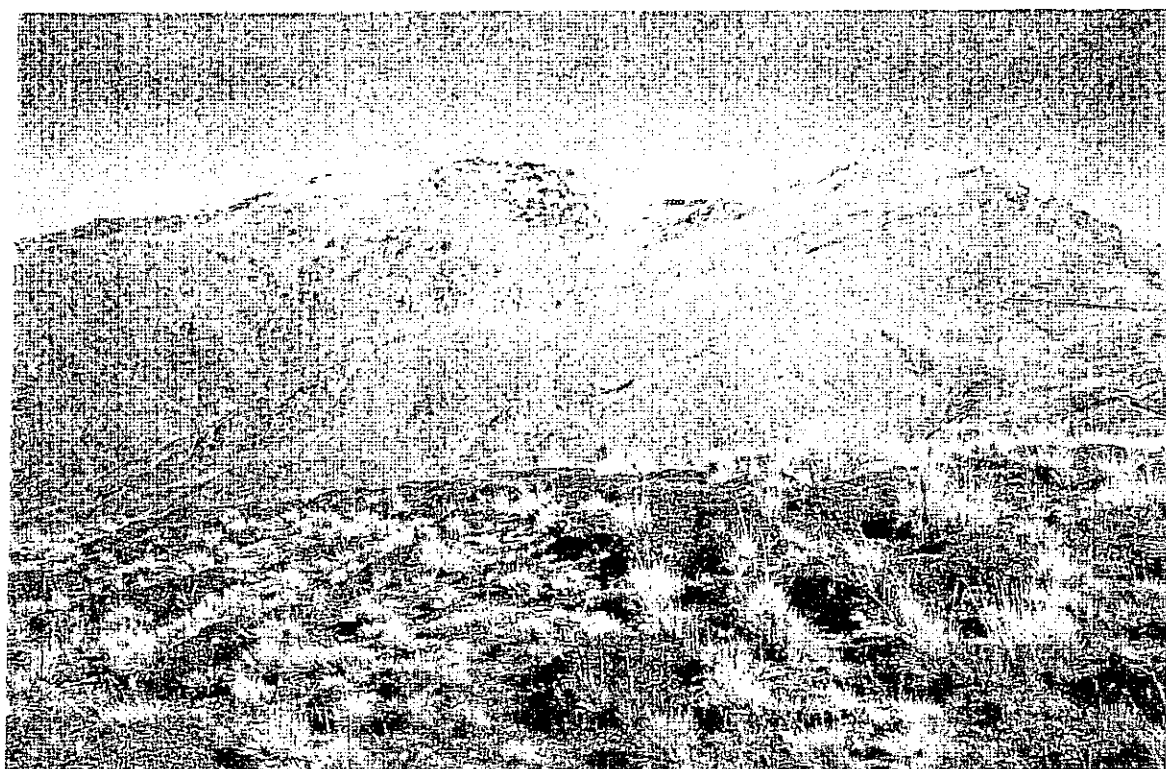


Fig. 14 The higher ground in the western and northern parts of the property stretches from about 1,000m to the crest of the 'Cardrona Range'. This area has very significant inherent value as tussock grassland, and sub-alpine herbfield and cushionfield at the highest altitudes. It should be returned to full Crown ownership and control to be managed for conservation and recreation purposes.

APPENDIX 2

**SOUTHERN LAKES BRANCH NEW ZEALAND DEERSTALKERS ASSOCIATION
SUBMISSION**

Stafford, Debbie Otago CO

From: Hans en Angela [biemond@xtra.co.nz]
Sent: Monday, 31 March 2003 11:11 p.m.
To: Deborah Stafford
Subject: Submission on tenure review in our local area

SUBMISSION PROPOSED TENURE REVIEW Lake Hawea station, Cloudy Peak, Glenary \Whitecomb \Garvie mountains Mt Albert Branch Creek, Two mile (Upper Manuherikua. Castle Dent.

General :So far big game hunters feel left out of this process (Tenure review) maybe because of our own doing otherwise what is exactly at stake has not been put out to enough affected people.

What we see at the moment is after the tenure process for a property is finished and the Doc signs go up is the first symbol on there is a no shooting the second a no dog .

Apparently without any consideration given to hunting opportunity,s Hunting is an recreational activitie enjoyed by many thousands of New Zealanders

We like to be taken serious and involved in this process were appropriate.

Access with firearms is our main concern and apart from places were dogs could be a hazard (Kiwi or Takahe)access for dogs as well ,dogs do increase the chance of success particularly hunting for pigs.

228 Lake Hawea station Historically been a good area for trophy red Stag still good bloodlines present access issues has Timaru creek got marginal strip .
public use of track from Johns Creek to breast Hill and along ridge crests would make the area more accessible

319 Mt Albert Historically Red deer hunting some chamois as well access should be along both sides of lake Wanaka would access other rivers as well (Albert Burn .Noteby and the Wilkin)

Castle Dent Pig Hunting some Red deer and Fallow deer as well Access currently along true left bank True right would provide better access.

52 Branch creek Red deer hunting access via branch creek

382 Two mile (upper Manuherikua) right of access required along formed bench from old manuherikua bridge.
Eastbranch Manuherikua legal access up need to be verified

12 Lower Cascade Red Deer hunting access via Cascade river ,old barn bay Cascade road

04 Cloudy Peak Pig hunting odd Red Deer Access via Ardgour road

Thanks very much for the opportunity to have some input in this process look forward to better communications in the future

Footnote As members of the NZDA we realise that numbers of game have to be kept at a level comparable with flora .I f managed properly we can be a tool to doing just that
at no cost to the taxpayer

sincerely Hans Biemond Secretary

Southern Lakes Branch nzda

Hans & Angela Biemond
Biemond Market Gardens
Earnscleugh Rd
RD 1
Alexandra 9181