

## **Crown Pastoral Land Tenure Review**

**Lease name : CAMBRIAN**

**Lease number : PO 375**

### **Plan attaching to the Conservation Resources Report - Values Map**

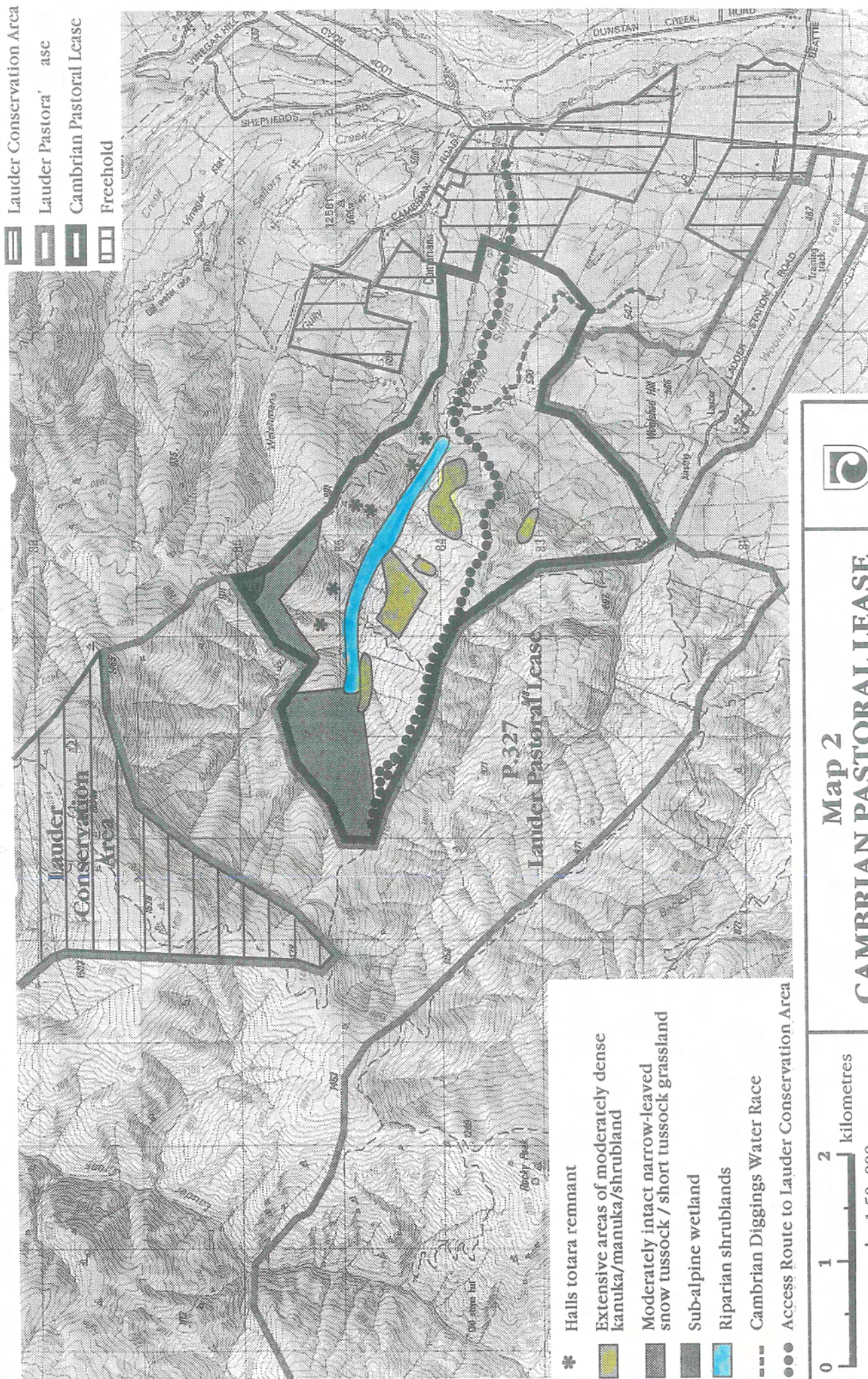
The following plan forms part of the Conservation Resources Report provided by the Department of Conservation.

It is released under the Official information Act 1982.

**May**

**07**





DEPARTMENT OF  
CONSERVATION  
TE PAPA ATAWHAI