

## **Crown Pastoral Land Tenure Review**

**Lease name : Camden**

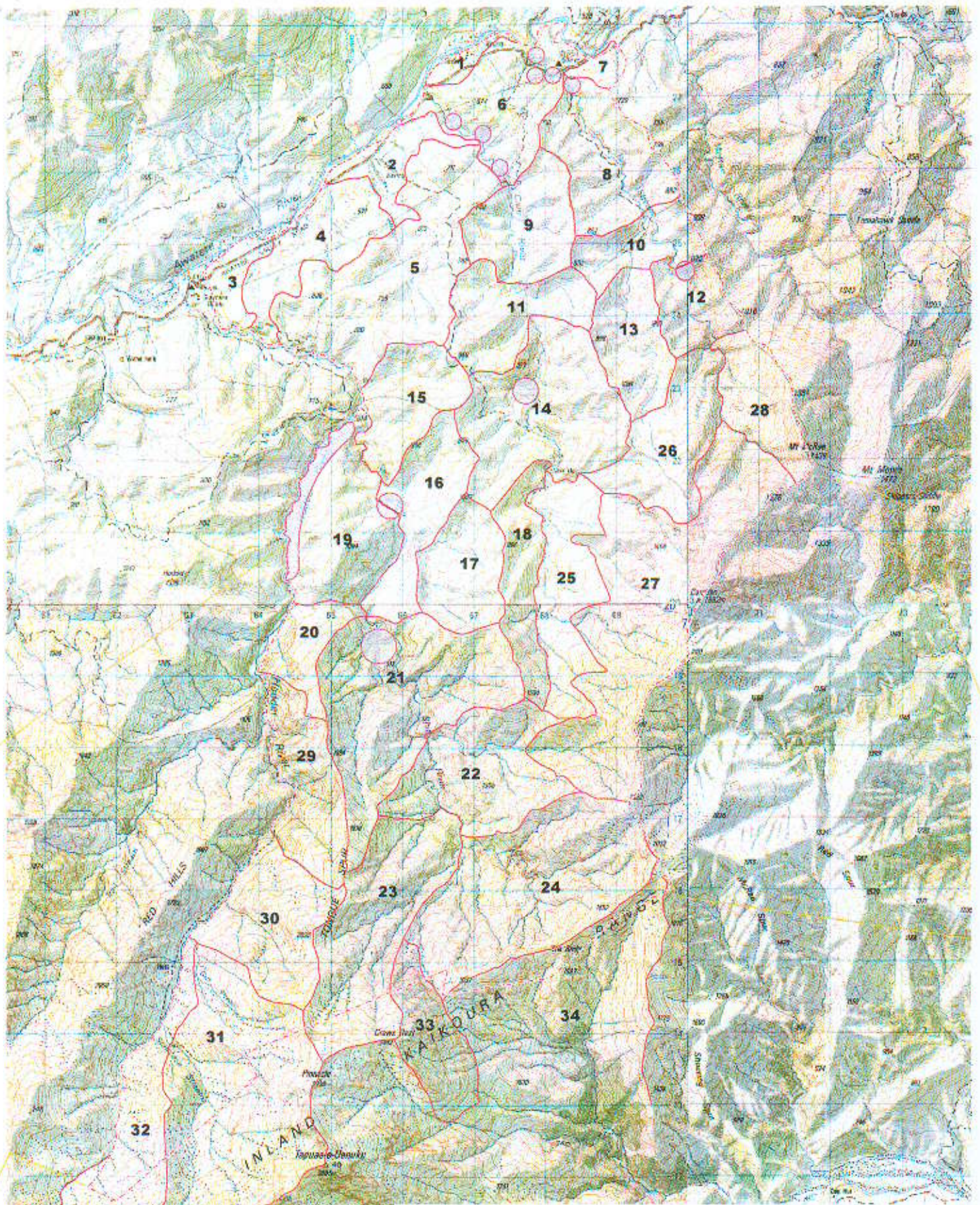
**Lease number : Pm 028**

### **Plans attaching to the conservation resources report**

These plans attach to and support the conservation resources report provided by the Department of Conservation.

They are released under the Official information Act 1982.

**Copied June 2003**



- Key**
- Boundary of leasehold
  - Landscape Units
  - Distinctive landscape feature

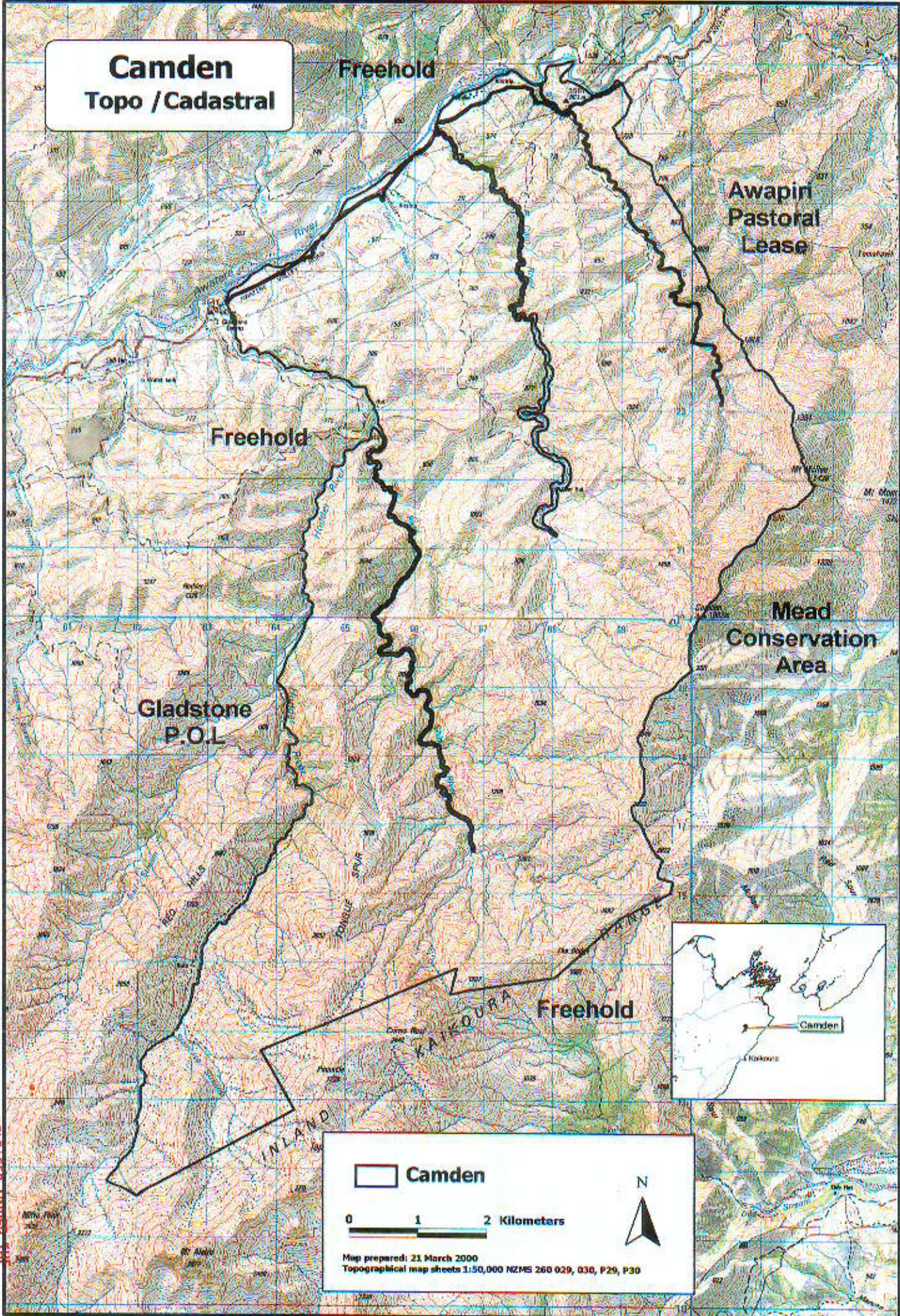
**Landscape Assessment  
Camden Pastoral Lease  
Figure 1**



**Landscape Units**

RELEASED UNDER THE  
OFFICIAL INFORMATION ACT

**Camden  
Topo / Cadastral**



 **Camden**

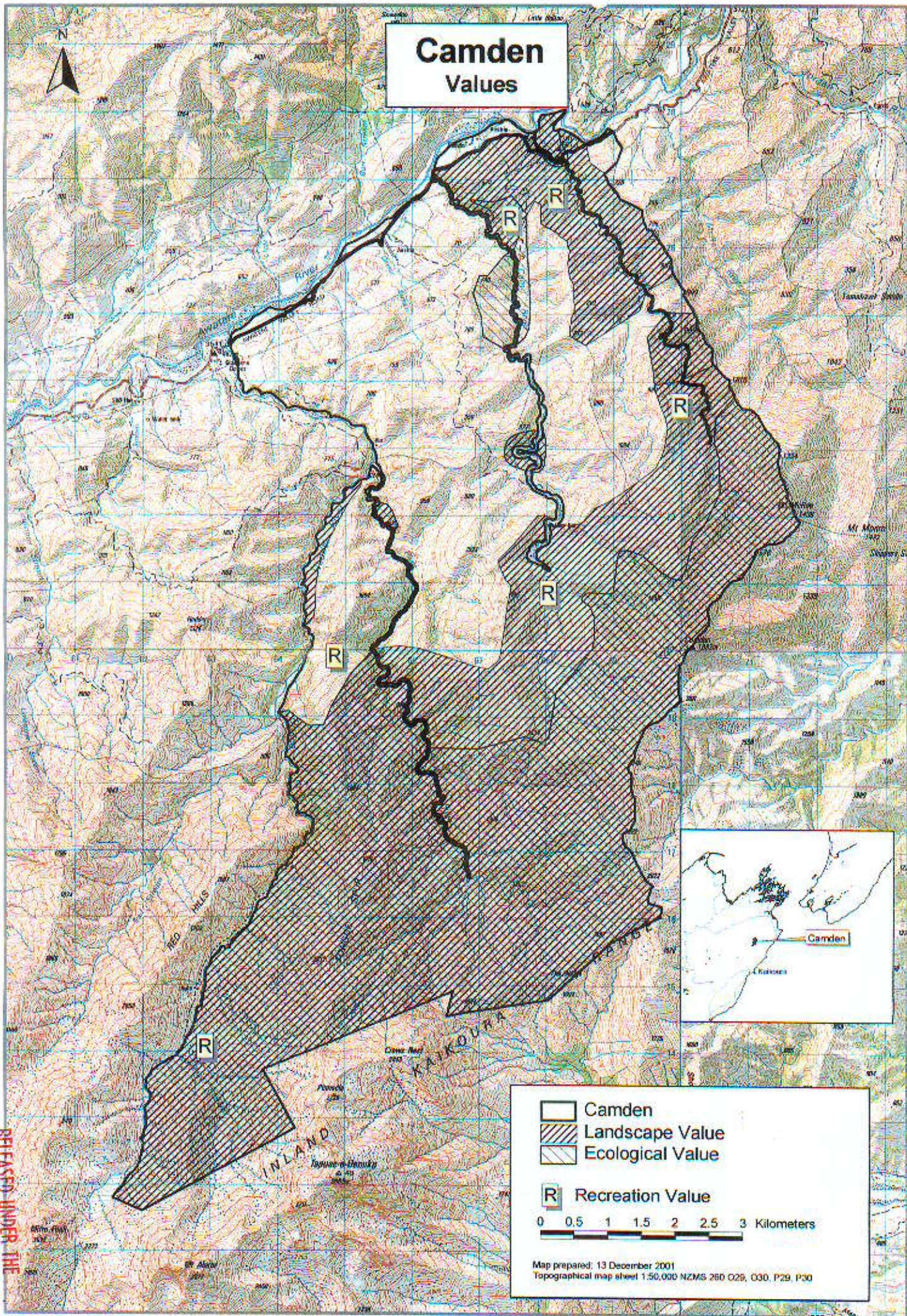
0 1 2 Kilometers



Map prepared: 21 March 2000  
Topographical map sheets 1:50,000 NZMS 260 029, 030, P29, P30

RELEASED UNDER THE  
OFFICIAL INFORMATION ACT

# Camden Values



RELEASED UNDER THE  
OFFICIAL INFORMATION ACT