

## **Crown Pastoral Land Tenure Review**

**Lease name : CARRICK STATION**

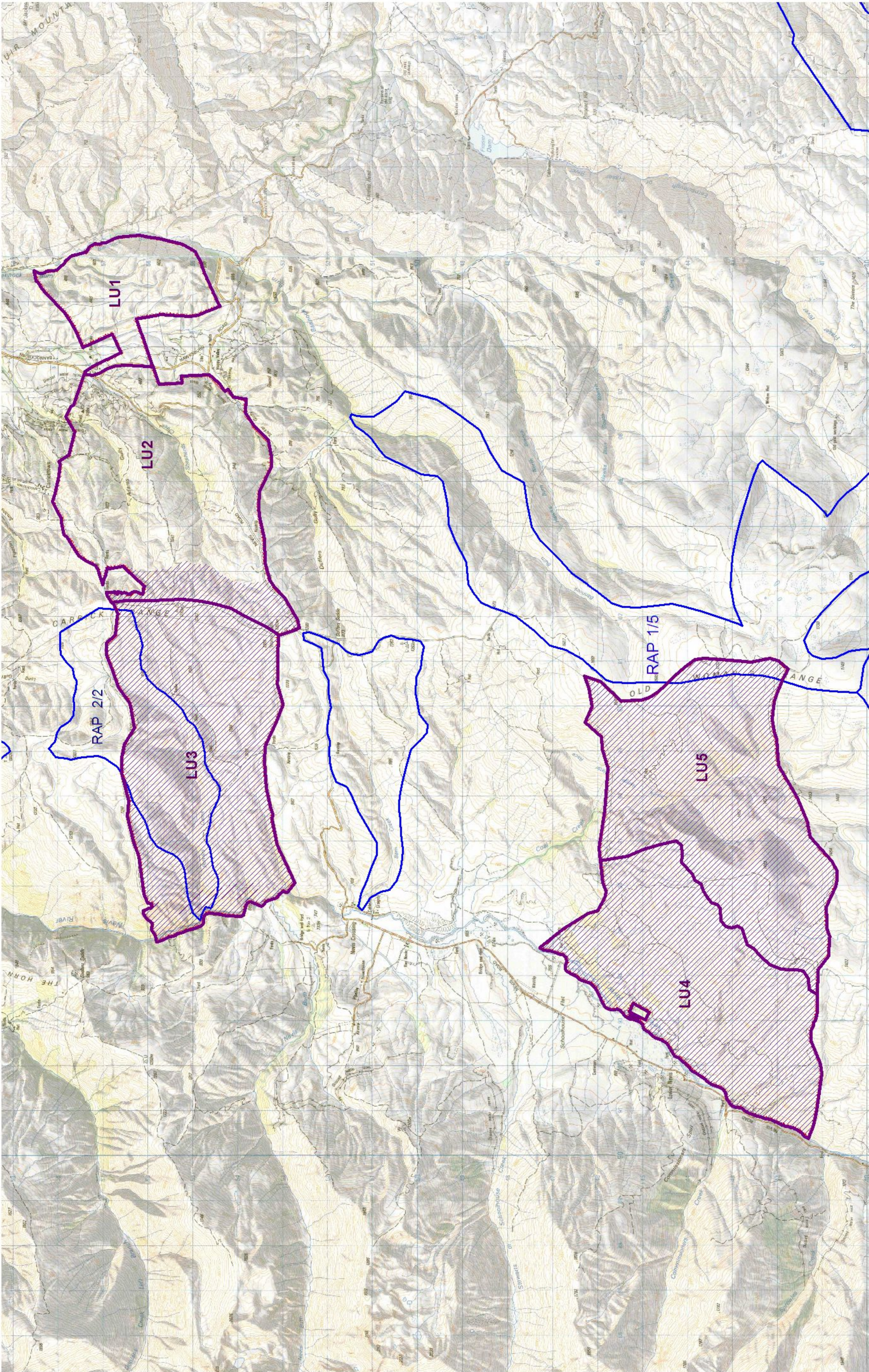
**Lease number : PO 357**

**Plans attaching to the  
Conservation Resources Report  
- Landscape Units Map**

These plans attach to and support the Conservation Resources Report provided by the Department of Conservation.

They are released under the Official information Act 1982.

**February 05**



- Significant landscape values
- Significant landscape values
- R A P s

4.2.2 Landscape units and Significant areas  
Carrick Pastoral Lease

