

Crown Pastoral Land Tenure Review

Lease name: CARRICK STATION

Lease number: PO 357

Fish & Game Report

As part of the process of Tenure Review Fish & Game councils may provide advice on significant inherent values within the pastoral lease, and the information may be incorporated in the Conservation Resources Report. The advice is part of the information gathered and assessed for the development of a preliminary consultation document.

The report attached is released under the Official Information Act 1982.

March

05



Carrick Station Crown Pastoral Lease

Resource Report prepared by John Hollows for the Otago Fish and Game Council

1. Introduction

The purpose of this report is to advise the Commissioner of Crown Lands on the sports fish and game values present on the land included in the Carrick Station Crown pastoral lease. The lease is being considered for land tenure review and disposal under the provisions of the Crown Pastoral Land Act. As well as habitat values the report covers angling and game bird hunting values and associated access issues.

Information for this report has been researched and prepared by Otago Fish and Game Council staff.

2. General Description

Carrick Station is a high-country property split into two distinct parcels of land. The larger portion is located between the Nevis River and Bannockburn Road. The smaller portion runs from the top of the Old Woman Range down to the Nevis Valley floor.

The property contains steep rolling hill country and a mixture of exotic and native grass species. Large proportions of the property contains native grasses over-sown with exotic grasses, while some river flat areas are more developed and contain predominantly exotic grasses.

Many of the small streams within the property are ephemeral or contain low flows during summer, limiting sports fish habitat values.

There appears to be Section 58 marginal strips in place on the Nevis River (Figure 1.), although these do not align with the current river path in many places.

3. Sports Fish Values

The Nevis River, is a recognised backcountry fishery noted for the quantity of large trout, and received 250 visits in 2001 (National Angler Survey (NAS)). The value this river is demonstrated in that the current Fish & Game regulations (2003-2004) define the Nevis River as fly-fishing water, where anglers are allowed to keep one fish per day only. The river also provides sports fish spawning and juvenile rearing habitat. Rivers such as the Nevis are highly valued by anglers as they provide a wilderness type angling experience that is becoming rare. The difficulty of accessing water in many places is part of the attraction of this river.

Statutory managers of freshwater sports fish, game birds and their habitats

Otago Region

Cnr Hanover & Harrow Sts, PO Box 76, Dunedin, New Zealand. Telephone (03) 477 9076 Facsimile (03) 477 0146

Most, Nevis River tributary streams, within the Carrick Lease property provide limited sports fish spawning and juvenile rearing habitat due to their steep native and ephemeral nature. However, some do contain sports fish habitat. This importance of spawning and juvenile recruitment habitat cannot be overstated as the Nevis River fishery needs to be self-sustaining, being isolated from the Kawarau River/Lake Dunstan.

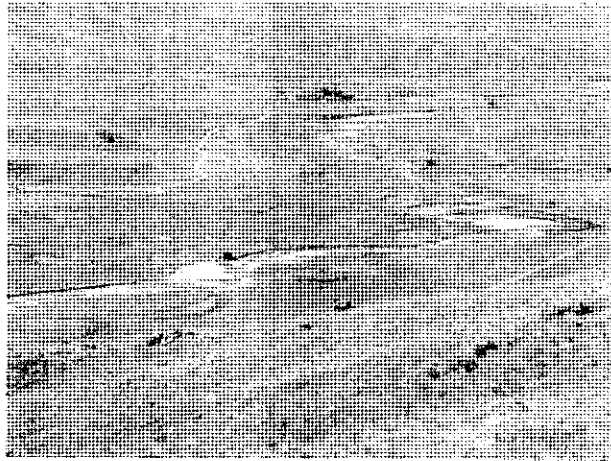


Figure 1. Nevis River looking downstream towards Schoolhouse Flat.

Shepherds Creek ceases to flow at time during summer, but has enough flow over winter to support sports fish spawning and juvenile recruitment. This creek is a source of fish for the Lake Dunstan fishery, the third most fished lake in Otago with 19872 visits annually (National angler Survey 2001).

4. Game Bird Values

Paradise shelducks (*Tadorna variegata*) were noted in places on Carrick Station. No information on the hunting of this species is available, but the property does provide some opportunities.

No Quail (*Lophortyx californicus*) or Chukor (*Alectoris chukar*) were observed during the survey, although the property contained an abundance of the habitat type favoured by the birds (Figures 2. & 3.). We understand that upland game bird hunting occurs on the property, with access at the discretion of the landowner discretion.

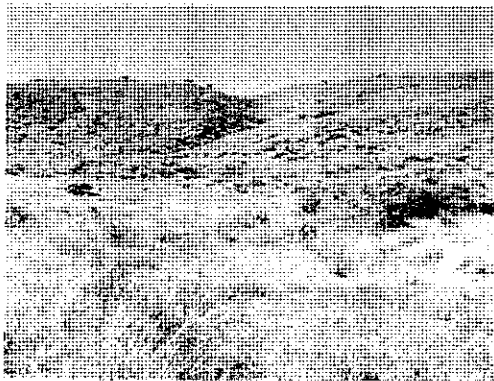


Figure 2. Densely covered sunny faces with open feeding areas containing suitable for California quail.



Figure 3. Open country habitat favoured by Chukor

5. Access

Access for game bird hunting is at the discretion of the landowner. We are not aware of any problems for access to the Lindis River for sports fishing, although this to is at the lease holders discretion.

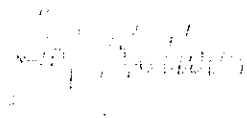
6. Fish & Game Perspective

Potters Creek, Shepherds Creek, the Nevis River, and any tributaries that qualify for Section 24 marginal strips require them to protect sports fishery values. Where Potters Creek and Shepherds Creek do not qualify for marginal strip protection they require covenant protection to protect the integrity of the water source.

The topography and altitude of the property suggests that the current habitat for upland game birds is unlikely to be altered to a degree that will impact on habitat values.

The current legal formed roads, unformed road reserves, and the marginal strip mechanisms outlined above should provide adequate access for recreational anglers and Fish & Game staff for sports fish management purposes.

Dated: April 1 2004.



John Hollows
Resource Officer