

Crown Pastoral Land Tenure Review

Lease name: CLENT HILLS

Lease number: PC 076

Fish & Game Report - Pt 2

As part of the process of Tenure Review Fish & Game councils may provide advice on significant inherent values within the pastoral lease, and the information may be incorporated in the Conservation Resources Report. The advice is part of the information gathered and assessed for the development of a preliminary consultation document.

The report attached is released under the Official Information Act 1982.

April

07

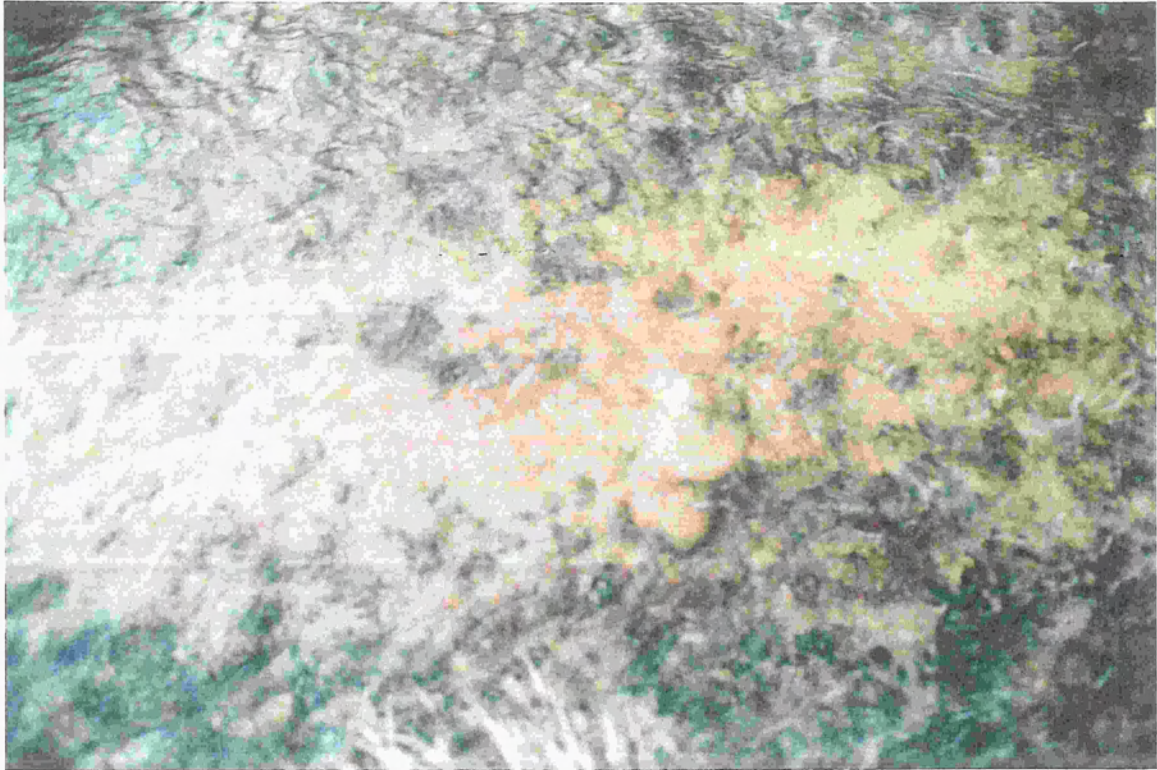


Figure 14: Silt deposition mid-channel in Gentleman Smith Stream approximately 200 m downstream from its junction with the unnamed stream diversion.



Figure 18: Stock trampling of the stream bank in the section of Gentleman Smith Stream subject to reduced flow by the diversion of the unnamed stream.