

## **Crown Pastoral Land Tenure Review**

**Lease name : CLOUDY PEAK**

**Lease number : PO 104**

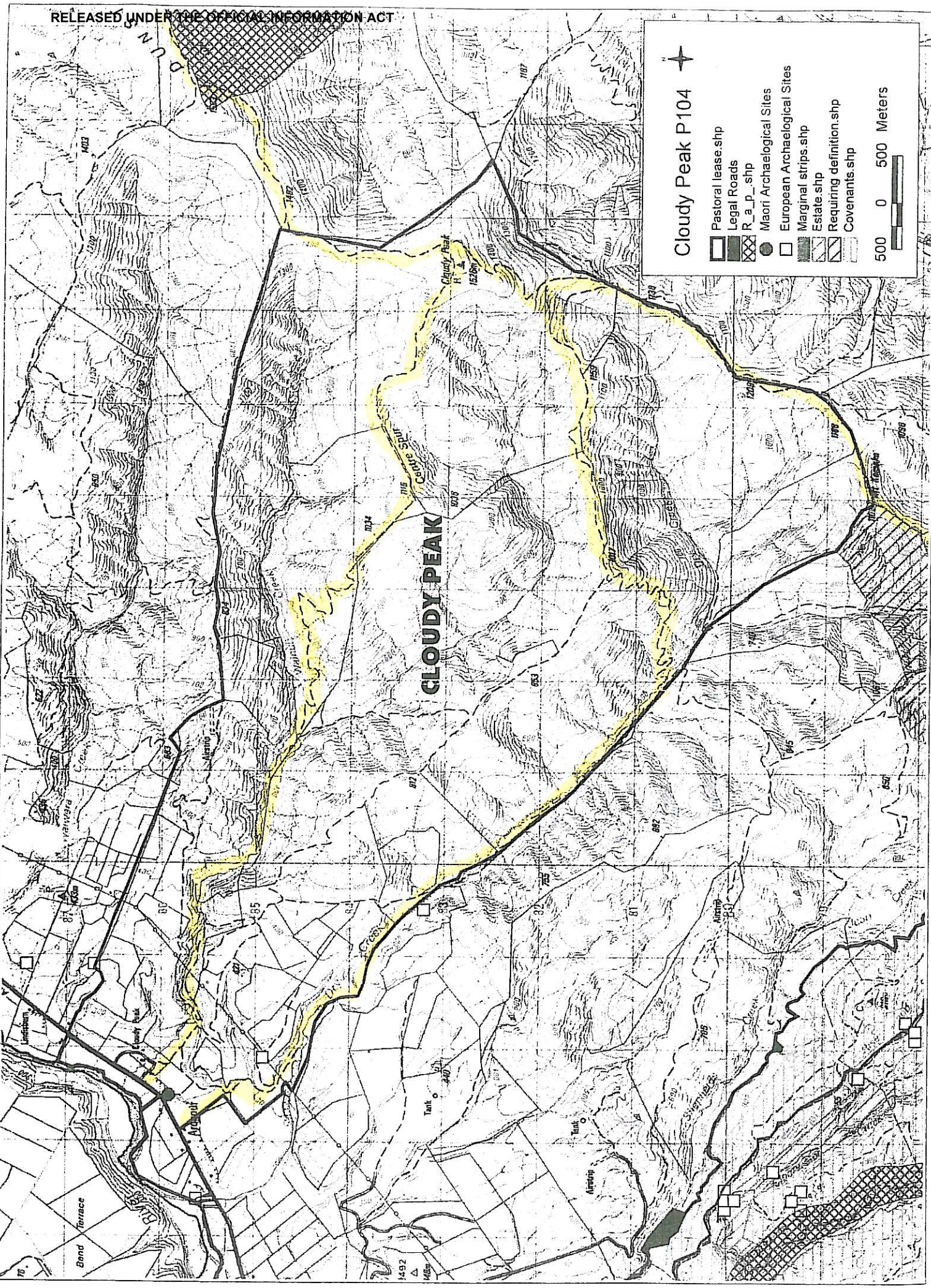
### **Conservation Resources Report - Part 3**

As part of the process of Tenure Review, advice on significant inherent values within the pastoral lease is provided by Department of Conservation officials in the form of a Conservation Resources Report. This report is the result of outdoor survey and inspection. It is a key piece of information for the development of a preliminary consultation document.

Note: Plans which form part of the Conservation Resources Report are published separately.

These documents are all released under the Official information Act 1982.

**February 06**



A map showing the important recreational access routes in yellow

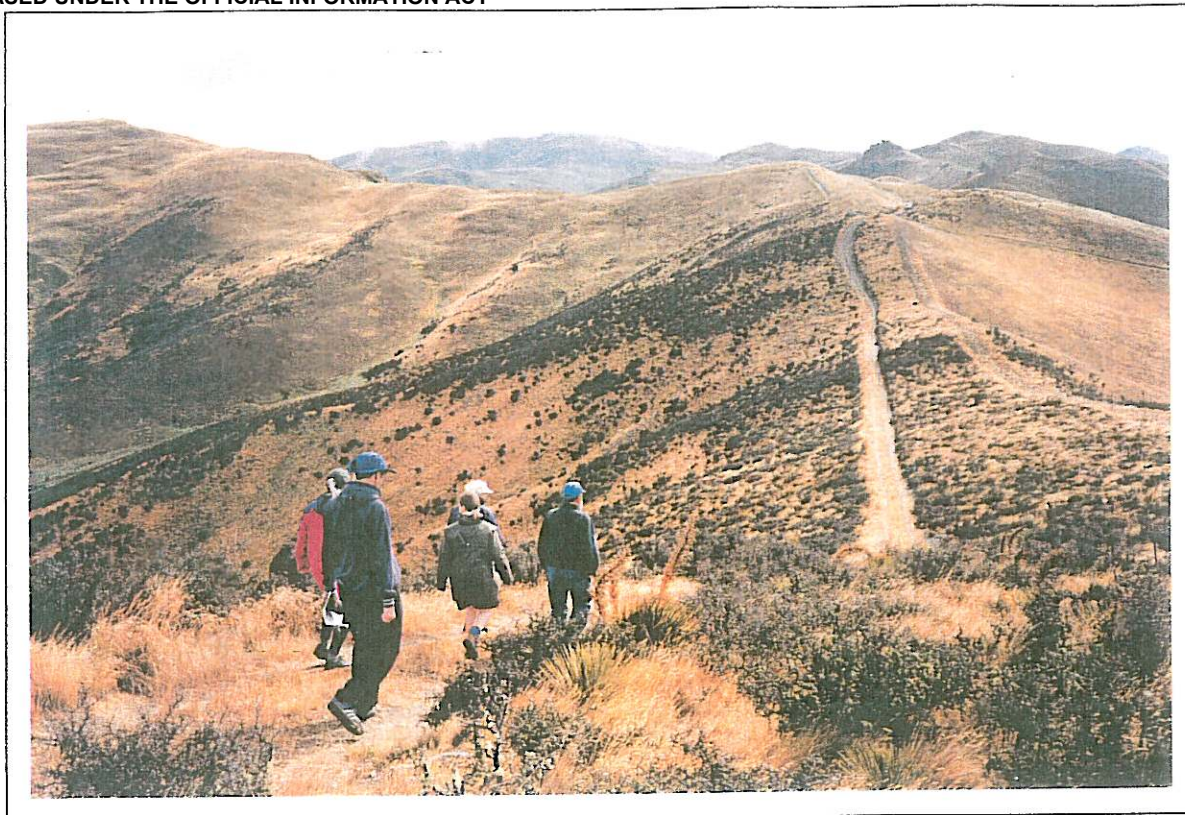


Fig.1 Walkers set out from Thomson Saddle, through the new conservation area which was formerly Ardgour pastoral lease, towards Mt Kamaka, the rocky knob in the distance and to the right of centre in this view. Beyond Mt Kamaka lies Cloudy Peak and the whole length of the Dunstan Mountains which provide a range of opportunities for recreation.



Fig. 2 Looking towards Dunstan Pass (the low saddle in the middle distance) which gives access to Dunstan Creek and St Bathans, with the St Bathans Range beyond. Public access to Dunstan Pass is emerging out of the reviews of the Lindis pastoral leases and continuous public access from Dunstan Pass to Thomsons Saddle, including crossing Cloudy Peak, would greatly enhance the recreational opportunities in the area.