

## **Crown Pastoral Land Tenure Review**

**Lease name : CLOUDY PEAK**

**Lease number : PO 104**

### **Conservation Resources Report - Part 4**

As part of the process of Tenure Review, advice on significant inherent values within the pastoral lease is provided by Department of Conservation officials in the form of a Conservation Resources Report. This report is the result of outdoor survey and inspection. It is a key piece of information for the development of a preliminary consultation document.

Note: Plans which form part of the Conservation Resources Report are published separately.

These documents are all released under the Official information Act 1982.

**February 06**



Fig. 3 Not all of the properties along the range are yet under review and one is in freehold ownership. Nevertheless, it is important that a broad view is taken of the overall outcomes as each lease is reviewed. Lack of a formal access easement across freehold land should not inhibit the securing of access as opportunities arise. Hopefully the gaps can be filled in later.



Fig. 4 Public use, on mountain bike, foot or horse, of the track along the back boundary of Cloudy Peak is the main issue in this tenure review. This view is looking south from near the summit of Cloudy Peak towards Mt Kamaka, the sharp rocky peak in shadow in the centre of this picture, which is situated on the boundary between Cloudy Peak and the former Ardour leasehold land, now conservation area.



Fig.5. Looking down the lower reaches of Dry Creek and the southern boundary of the property with the homestead among the trees at the extreme right of this picture, on the valley floor of the Lindis River. The lease includes about 500ha of terraces and lower rolling land which can be managed in a way that is ecologically sustainable and is therefore suitable for freeholding.



Fig. 6 A typical view of Cloudy Peak which is well named because of the persistent cloud cover on its summit. This view is looking up the right branch of Wainui Creek with Cloudy Peak obscured but just to the left of centre on the skyline. Note the contrast between the dry sunny faces with much scabweed and the greener, shady faces.



Fig. 7 Here, one of the Otago Goldfields Cavalcade Trails makes its way along the Dunstan tops between Cluden Pass and Cloudy Peak. This route is likely to become increasingly popular in future as traditional NZ trampers and outdoors people are displaced from places like National Parks and the increasingly well known 'Great Walks' which are becoming dominated by overseas visitors.

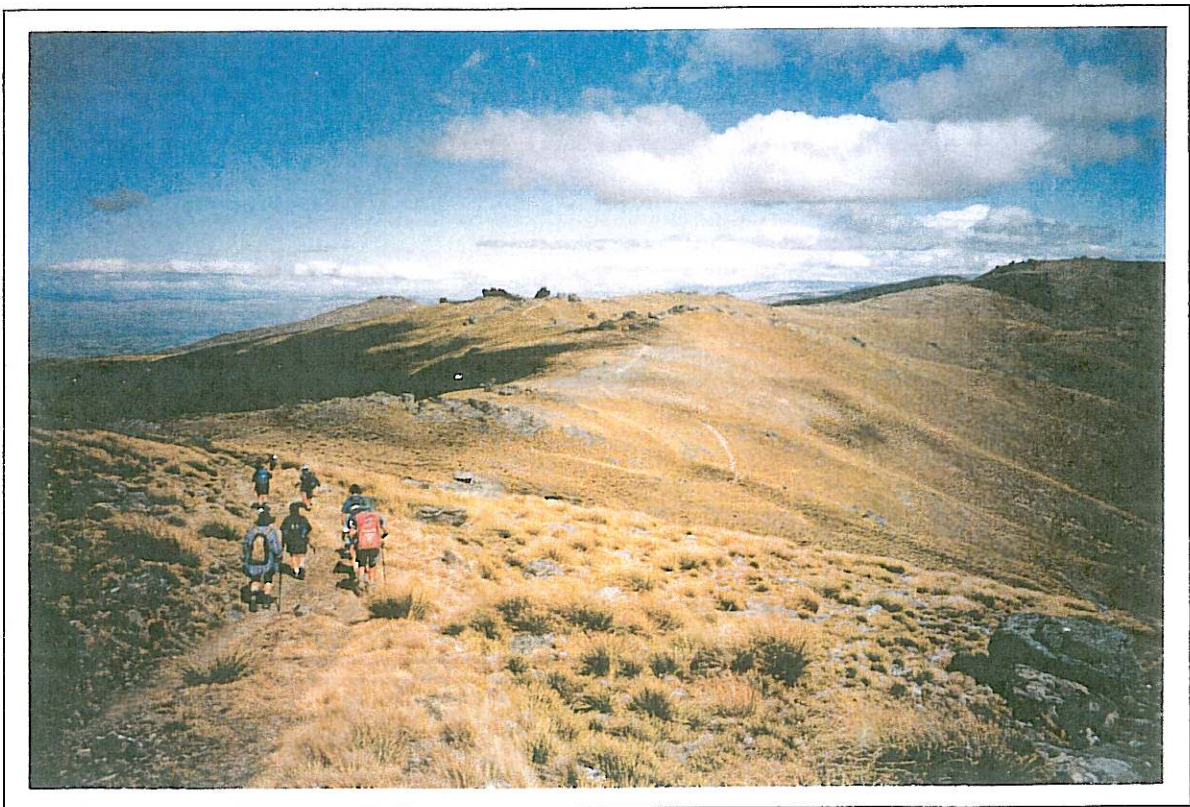


Fig. 8 From the Dunstan Tops there are expansive views to the Manuherikia and Central Otago, to the Upper Clutha and, on a fine day, as far away as Mt Aspiring and even Mt Cook.