

Crown Pastoral Land Tenure Review

Lease name : CLOUDY PEAK

Lease number : PO 104

Conservation Resources Report - Part 7

As part of the process of Tenure Review, advice on significant inherent values within the pastoral lease is provided by Department of Conservation officials in the form of a Conservation Resources Report. This report is the result of outdoor survey and inspection. It is a key piece of information for the development of a preliminary consultation document.

Note: Plans which form part of the Conservation Resources Report are published separately.

These documents are all released under the Official information Act 1982.

February 06

Proposed Conservation Area

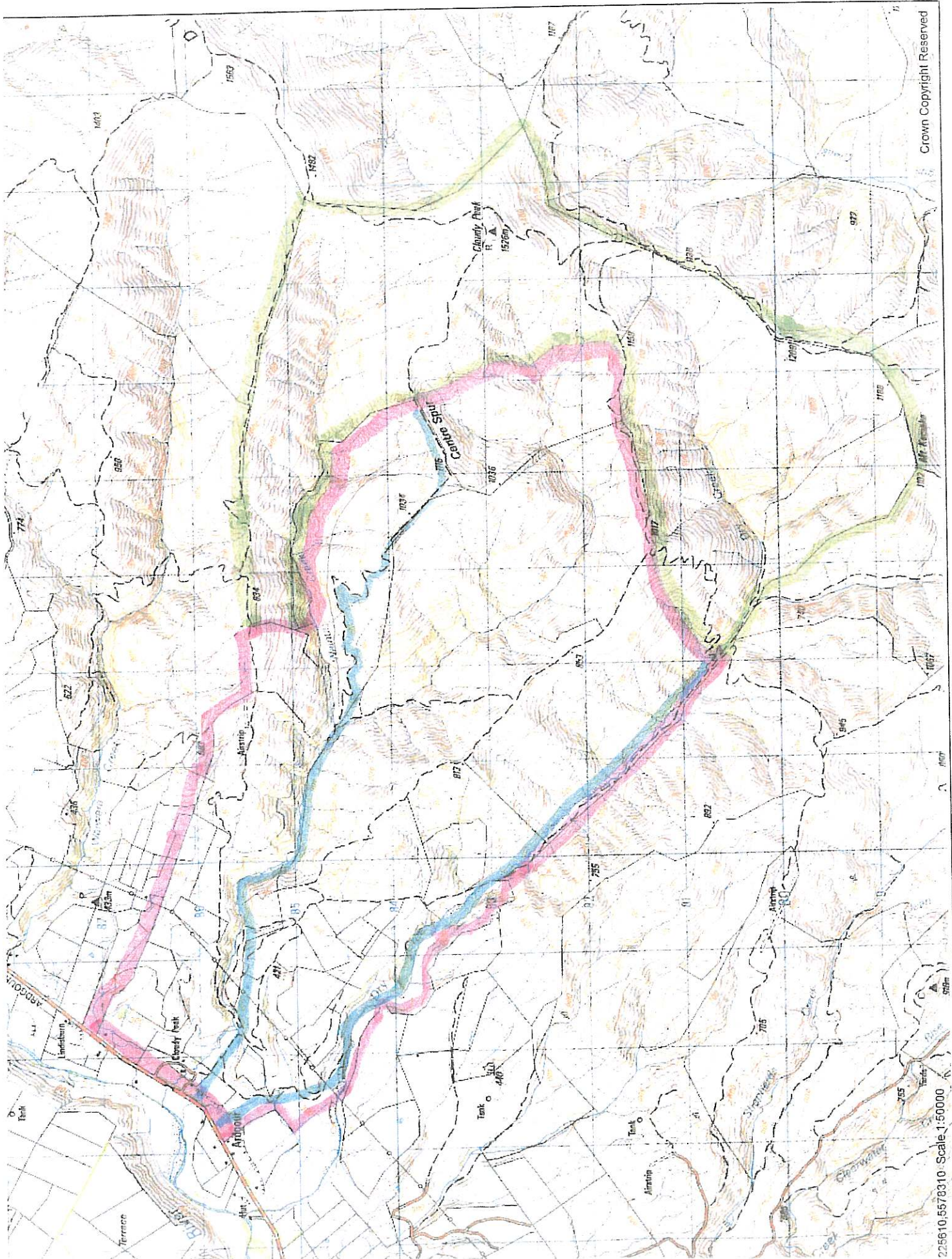


Proposed Access

Access



Possible Threshold



Crown Copyright Reserved



Photo (1) Dry Creek, showing density of *C. Odorata* and *Metagordi*



Photo (2) Head of Dry Creek, looking north east