

## **Crown Pastoral Land Tenure Review**

**Lease name: CLOUDY PEAK**

**Lease number: PO 104**

### **Fish & Game Report**

As part of the process of Tenure Review Fish & Game councils may provide advice on significant inherent values within the pastoral lease, and the information may be incorporated in the Conservation Resources Report. The advice is part of the information gathered and assessed for the development of a preliminary consultation document.

The report attached is released under the Official Information Act 1982.

**February 06**

DTZ NEW ZEALAND  
ALEXANDRA

- 1 OCT 2003

RECEIVED

## **Fish and Game Resources Report for the Cloudy Peak Pastoral Lease.**

Prepared by the  
Otago Fish and Game Council

### **Section One – Introduction**

#### *1.1 Purpose*

The purpose of this report is to advise the Commissioner of Crown Lands on the sports fish and game values present on the land included in the Cloudy Peak Crown pastoral lease. The lease is being considered for land tenure review and disposal under the provisions of the Crown Pastoral Land Act. As well as habitat values the report covers angling and hunting values and any associated access issues.

#### *1.2 Location*

Cloudy Peak Station is a triangular shaped parcel of land that is found on the true right hand side of the Dry Creek catchment and the whole of the Wainui Creek, both of which drain into the Lindis River opposite The Bend Terrace.

### **Section Two - General Resources Information**

#### *2.1 Sports Fisheries Habitat Values*

Wainui Creek and Dry Creek contain spawning, juvenile rearing, and some adult brown trout (*Salmo trutta*) habitat. The main values in these creeks would be for spawning and juvenile recruitment. The lower section of Wainui Creek and Dry Creek cease to flow for a period over summer, probably as a result of water extraction for agriculture.

#### *2.2 Sports Fisheries Recreation Values*

Waterways located within the Cloudy Peak property have limited recreational values.

#### *2.3 Gamebird Habitat Values*

The property provides good habitat for California quail (*Lophortyx californica brunneescens*). The habitat of most importance is the faces covered in briar, scrub and Matagouri around Wainui Creek and Dry Creek.

#### *2.4 Gamebird Recreational Values*

There is good California quail hunting on the Cloudy Peak property.

*Statutory managers of freshwater sports fish, game birds and their habitats*

**Otago Region**

Cnr Hanover & Harrow Sts, PO Box 76, Dunedin, New Zealand. Telephone (03) 477 9076 Facsimile (03) 477 0146

*2.5 Access*

Access is at the landowners discretion.

**Section Three - Fish and Game Perspective**

*3.1 Fisheries Habitat Views*

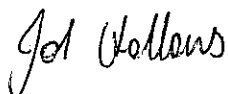
Wainui Creek, from the confluence of the Lindis River upstream to a point at approximately E2233060 N5584925 and a tributary of Wainui Creek, up to approximately E2231605 N5583995 requires marginal strip or covenant protection to protect fishery values.

*3.2 Game Habitat Views*

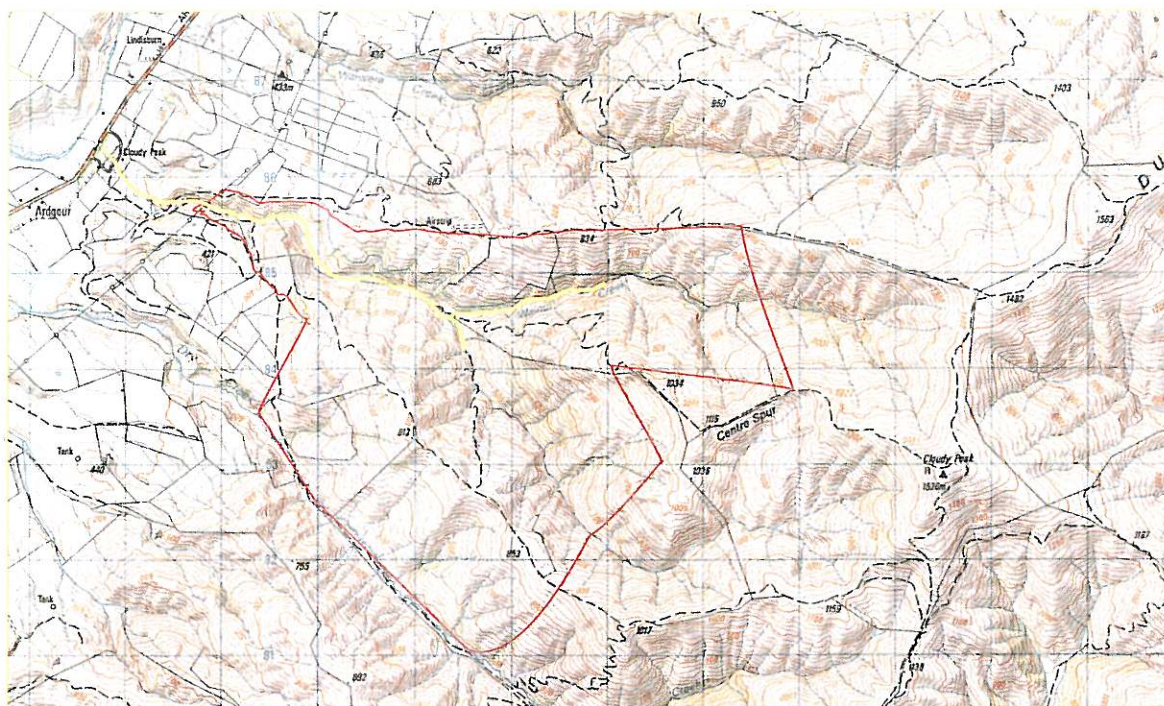
Portions of the Wainui Creek and Dry Creek require some form of covenant protection to preserve the California quail habitat. These sections of stream are highlighted in Figure 1.

Dated: 29 September 2003

Signed



John Hollows  
**Resource Officer**



**Figure 1.** Areas of Wainui Creek and Dry Creek containing sportsfishery (Yellow line) and California quail (Red line) habitat.