

## **Crown Pastoral Land Tenure Review**

**Lease name : CLUDEN STATION**

**Lease number : PO 213**

**Plans attaching to the  
Conservation Resources Report**

- Landscape Units Map &**
- Significant Ecological Values  
Map**

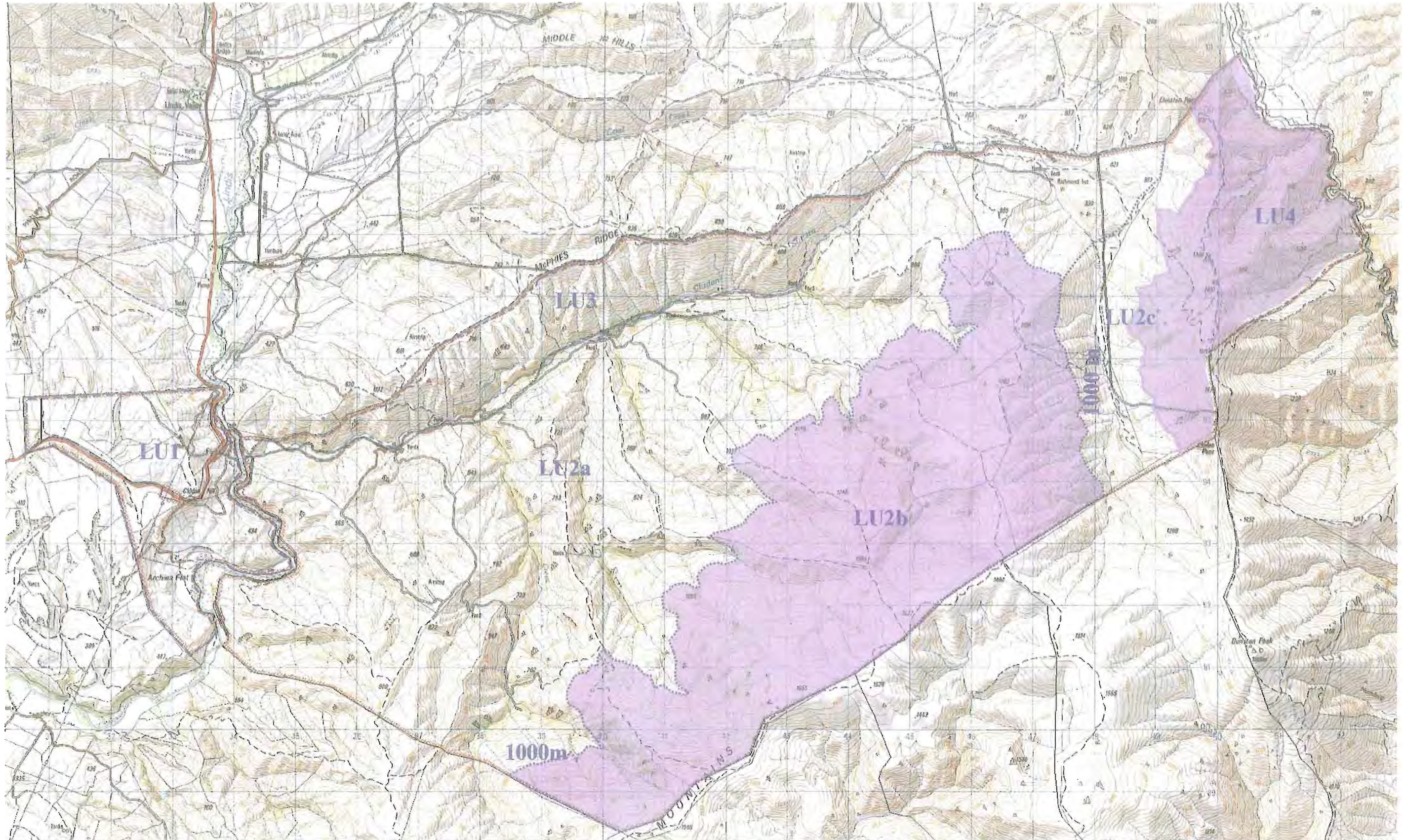
These plans attach to and support the conservation resources report provided by the Department of Conservation.

They are released under the Official information Act 1982.

**February 05**



### Map 4.2.2: Landscape Units and Significant Landscape Values- Cluden Pastoral Lease

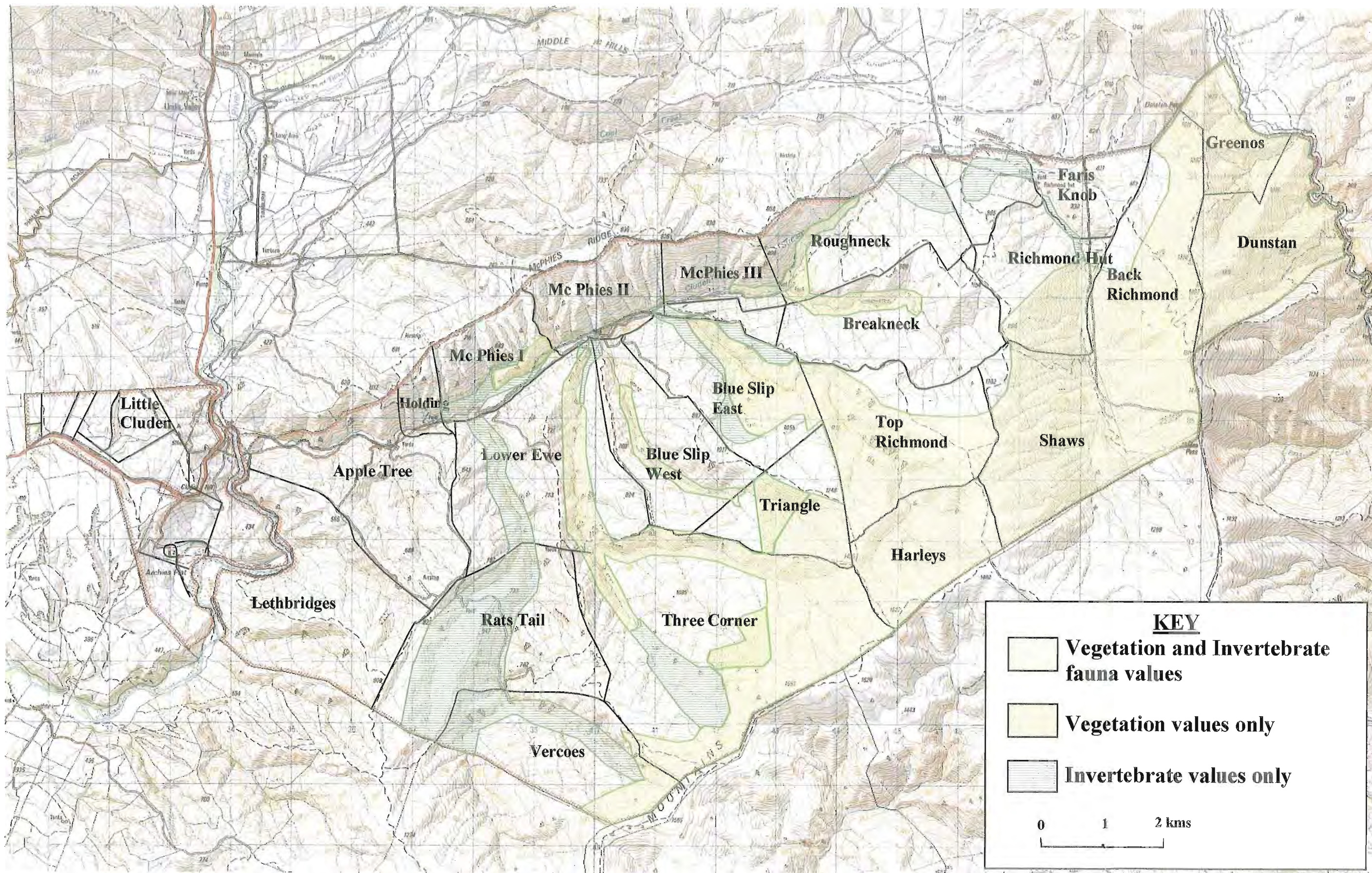


|                                                                                                                          |                                 |                        |
|--------------------------------------------------------------------------------------------------------------------------|---------------------------------|------------------------|
|  Landscape Unit boundary              | <b>KEY</b>                      |                        |
|  Landscape sub-unit boundary          | LU1 Little Cluden/Archie Flat   | LU2c Cluden – Richmond |
|  Areas of significant landscape value | LU2a Cluden – Lower & Mid       | LU3 McPhies Ridge      |
|                                                                                                                          | LU2b Cluden Upper Slope & Crest | LU4 Dunstan Creek      |

0 1 2 kms



### Map 4.2.3: Significant Ecological Values – Vegetation and Invertebrate Fauna- Cluden Pastoral Lease





Map 4.2.4: Significant Ecological (Fish and Lizard) and Recreation Values – Cluden Pastoral Lease

