

Crown Pastoral Land Tenure Review

Lease name : CLUDEN STATION

Lease number : PO 213

Conservation Resources Report - Part 3

As part of the process of Tenure Review, advice on significant inherent values within the pastoral lease is provided by Department of Conservation officials in the form of a Conservation Resources Report. This report is the result of outdoor survey and inspection. It is a key piece of information for the development of a preliminary consultation document.

Note: Plans which form part of the Conservation Resources Report are published separately.

These documents are all released under the Official information Act 1982.

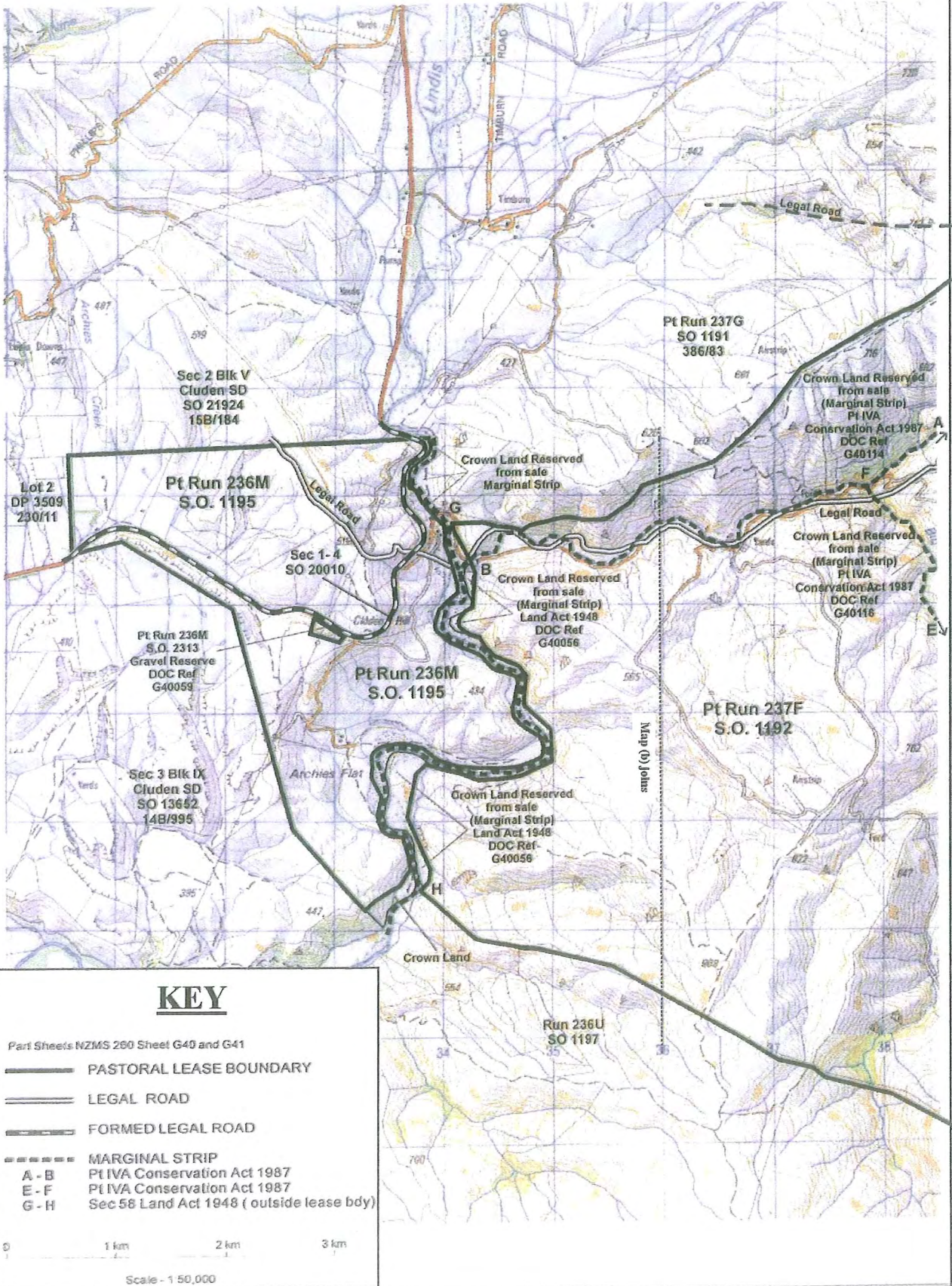
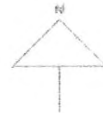
February

05

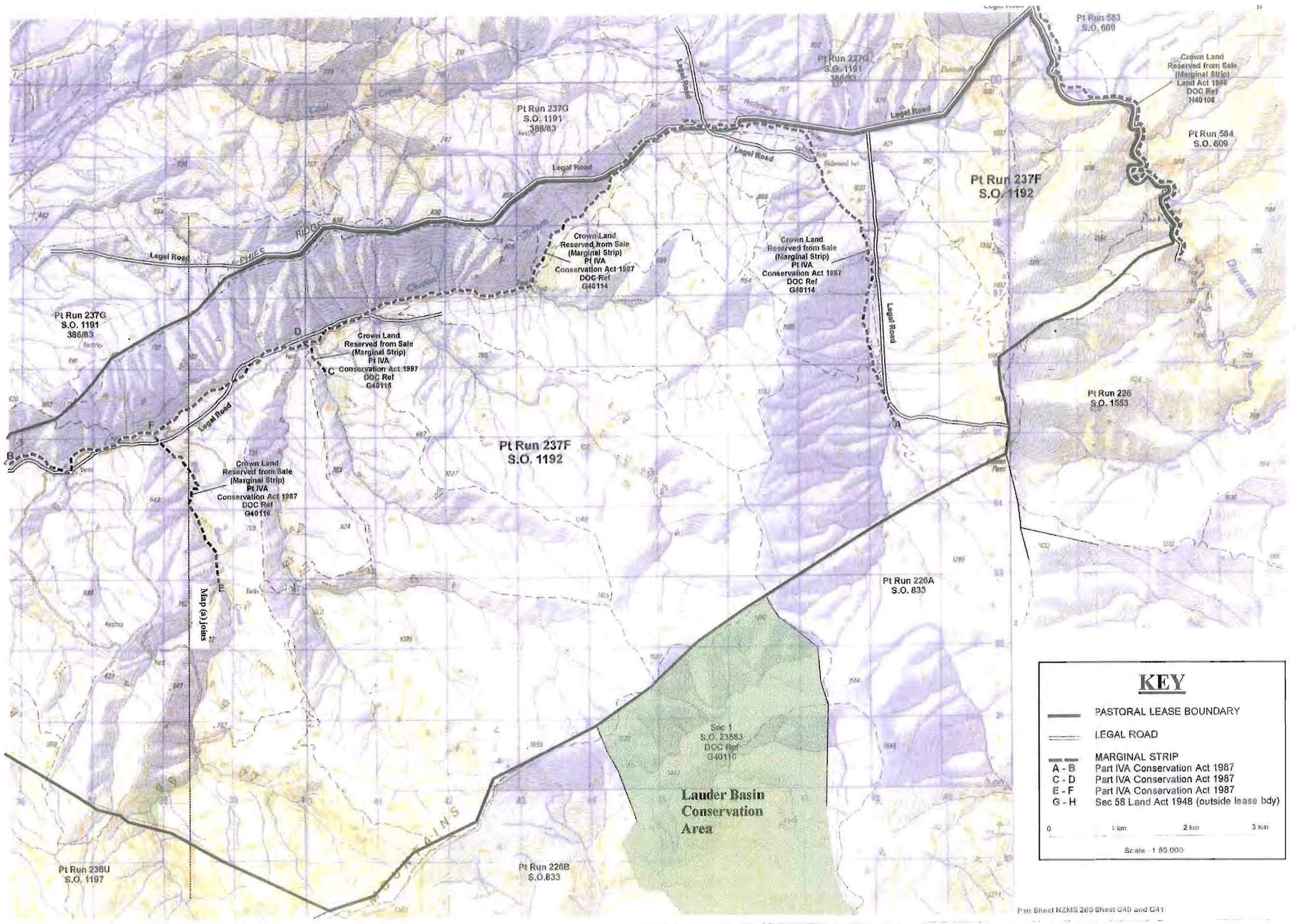
4.2 ILLUSTRATIVE MAPS

- 4.2.1a & b : Topo/Cadastral**
- 4.2.2: Values - Landscape units and Landscape values**
- 4.2.3: Values-Ecological (Vegetation and Invertebrate fauna)**
- 4.2.4: Values-Ecological (Freshwater fish and Lizards)/ Recreation**

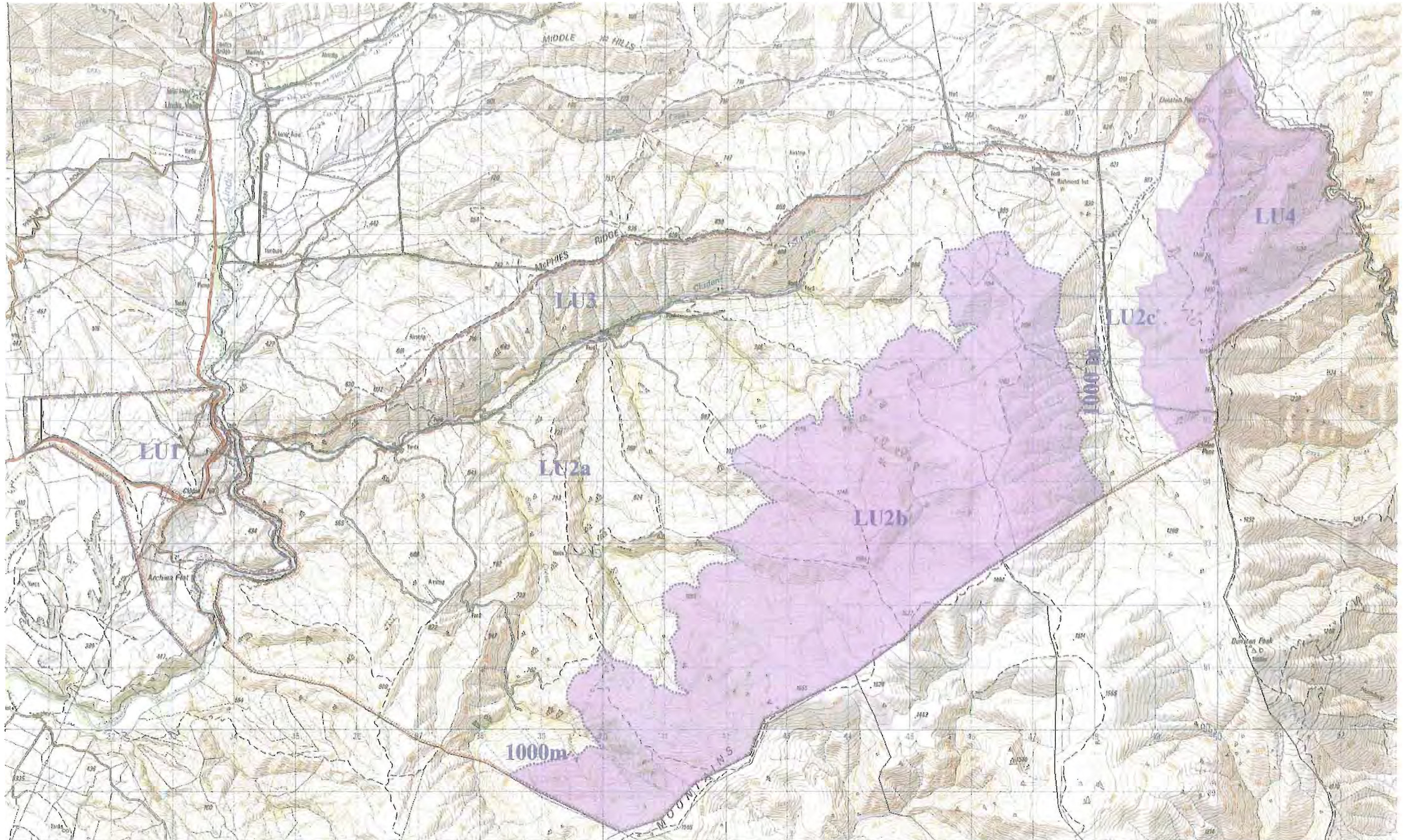
Map 4.2.1(a): Topocadastral – Cluden Pastoral Lease


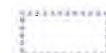



MAP 4.2.1(b): Topocadastral – Cluden Pastoral Lease



Map 4.2.2: Landscape Units and Significant Landscape Values- Cluden Pastoral Lease



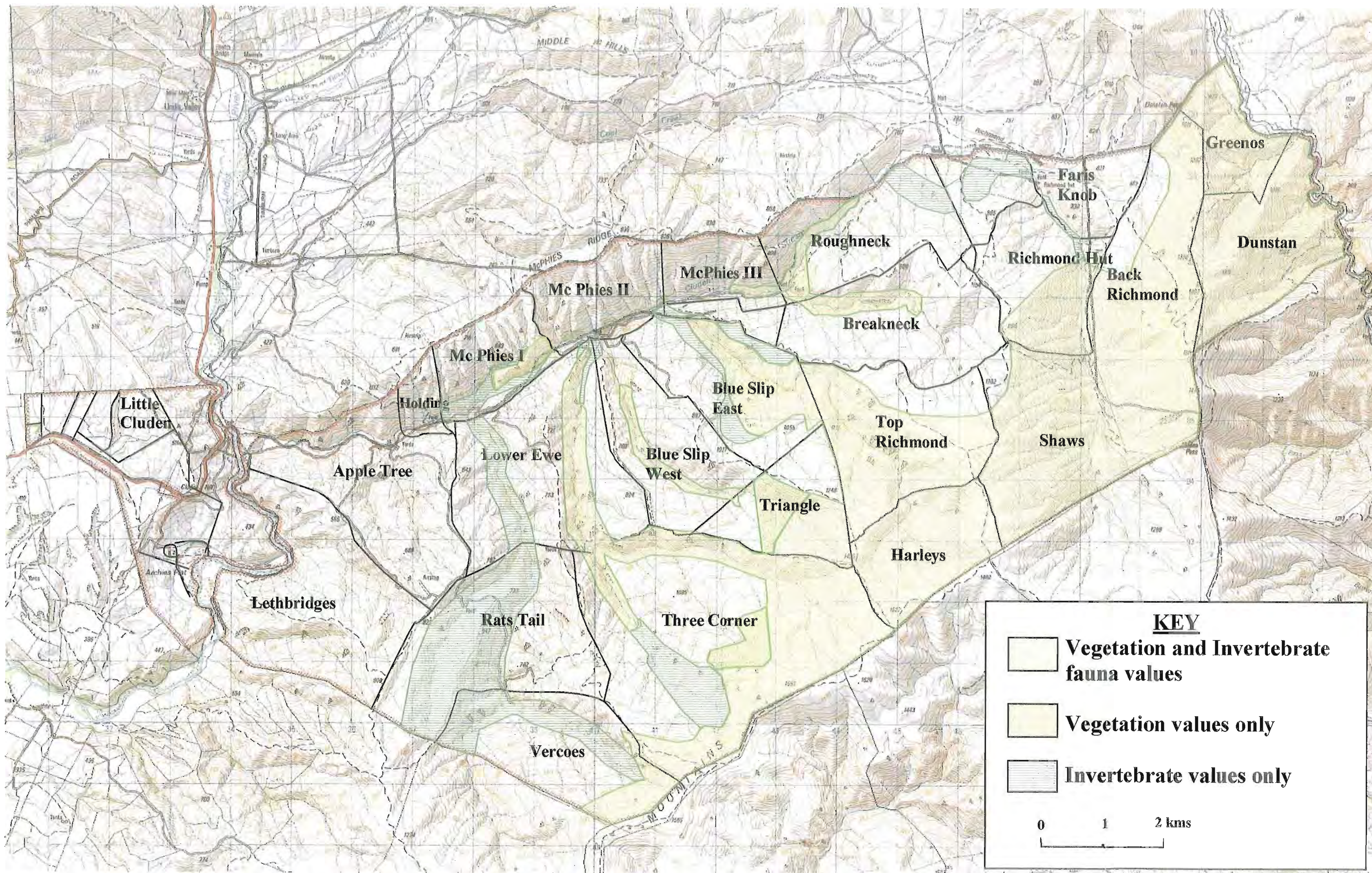
-  Landscape Unit boundary
-  Landscape sub-unit boundary
-  Areas of significant landscape value

KEY

- | | | | |
|------|----------------------------|------|-------------------|
| LU1 | Little Cluden/Archie Flat | LU2c | Cluden – Richmond |
| LU2a | Cluden – Lower & Mid | LU3 | McPhies Ridge |
| LU2b | Cluden Upper Slope & Crest | LU4 | Dunstan Creek |



Map 4.2.3: Significant Ecological Values – Vegetation and Invertebrate Fauna- Cluden Pastoral Lease



Map 4.2.4: Significant Ecological (Fish and Lizard) and Recreation Values – Cluden Pastoral Lease

