

## **Crown Pastoral Land Tenure Review**

**Lease name : CORONET PEAK**

**Lease number : PO 195**

### **Conservation Resources Report - Part 6**

As part of the process of Tenure Review, advice on significant inherent values within the pastoral lease is provided by Department of Conservation officials in the form of a Conservation Resources Report. This report is the result of outdoor survey and inspection. It is a key piece of information for the development of a preliminary consultation document.

Note: Plans which form part of the Conservation Resources Report are published separately.

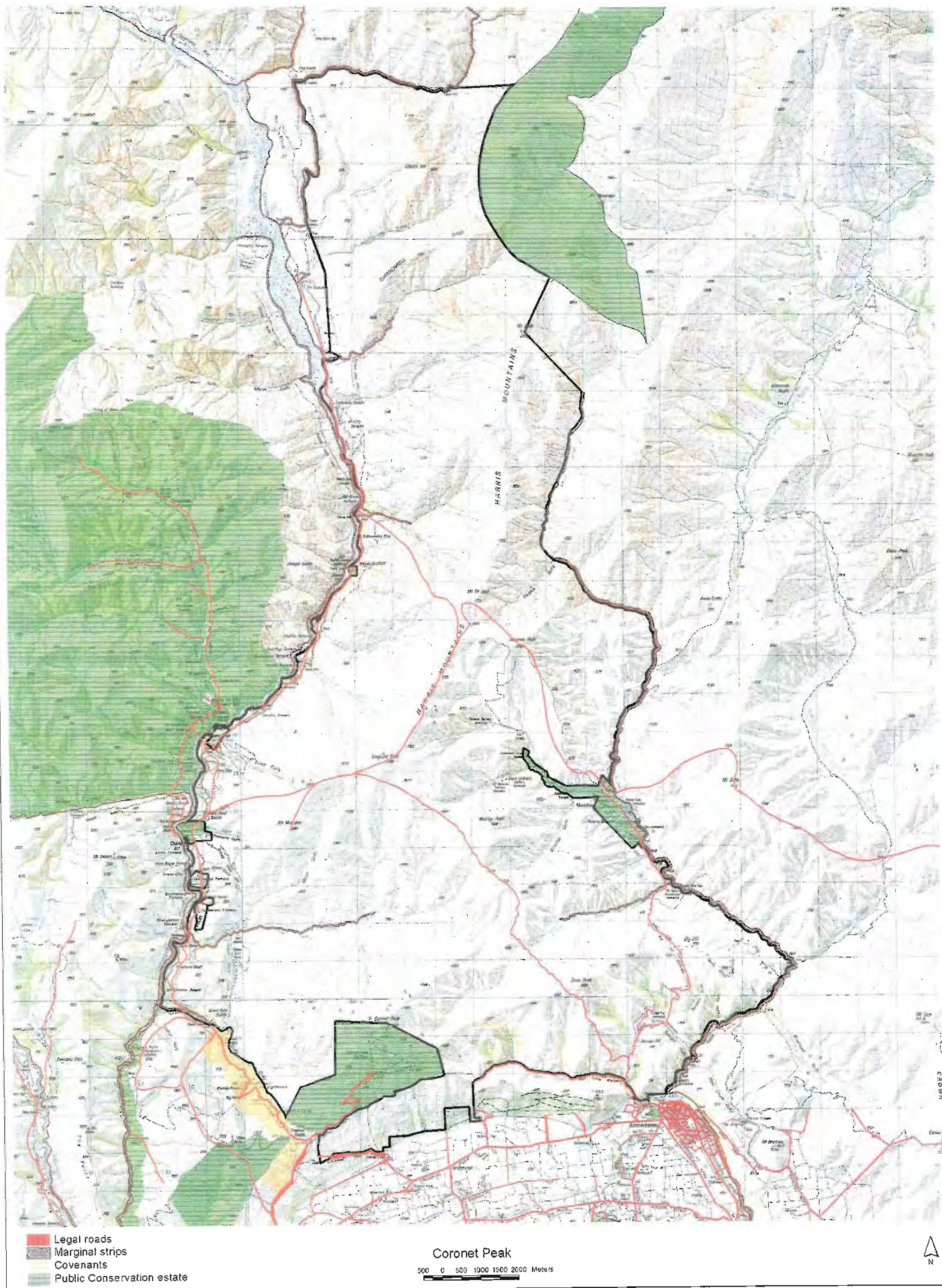
These documents are all released under the Official information Act 1982.

**January 06**

## **4.2 ILLUSTRATIVE MAPS**

- 4.2.1 Topo-cadastral**
- 4.2.2 Values – Landscape Units and Landscape Values**
- 4.2.3 Values – Botanical**
- 4.2.4 Values – Invertebrate Fauna**
- 4.2.5 Values – Historic**
- 4.2.6 Values – Recreation**

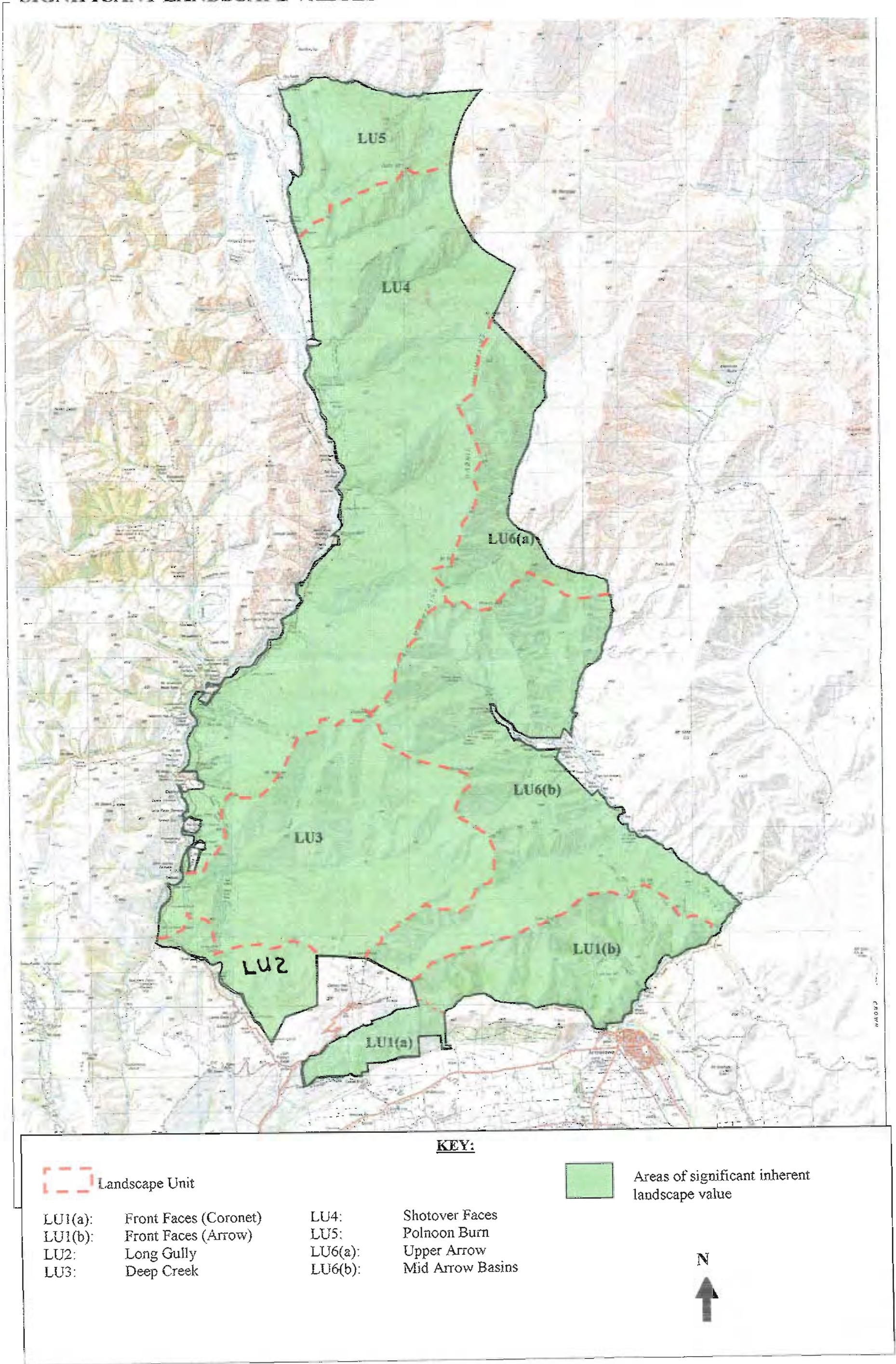




**MAP 4.2.1: TOPO/CADASTRAL – CORONET PEAK PASTORAL LEASE**

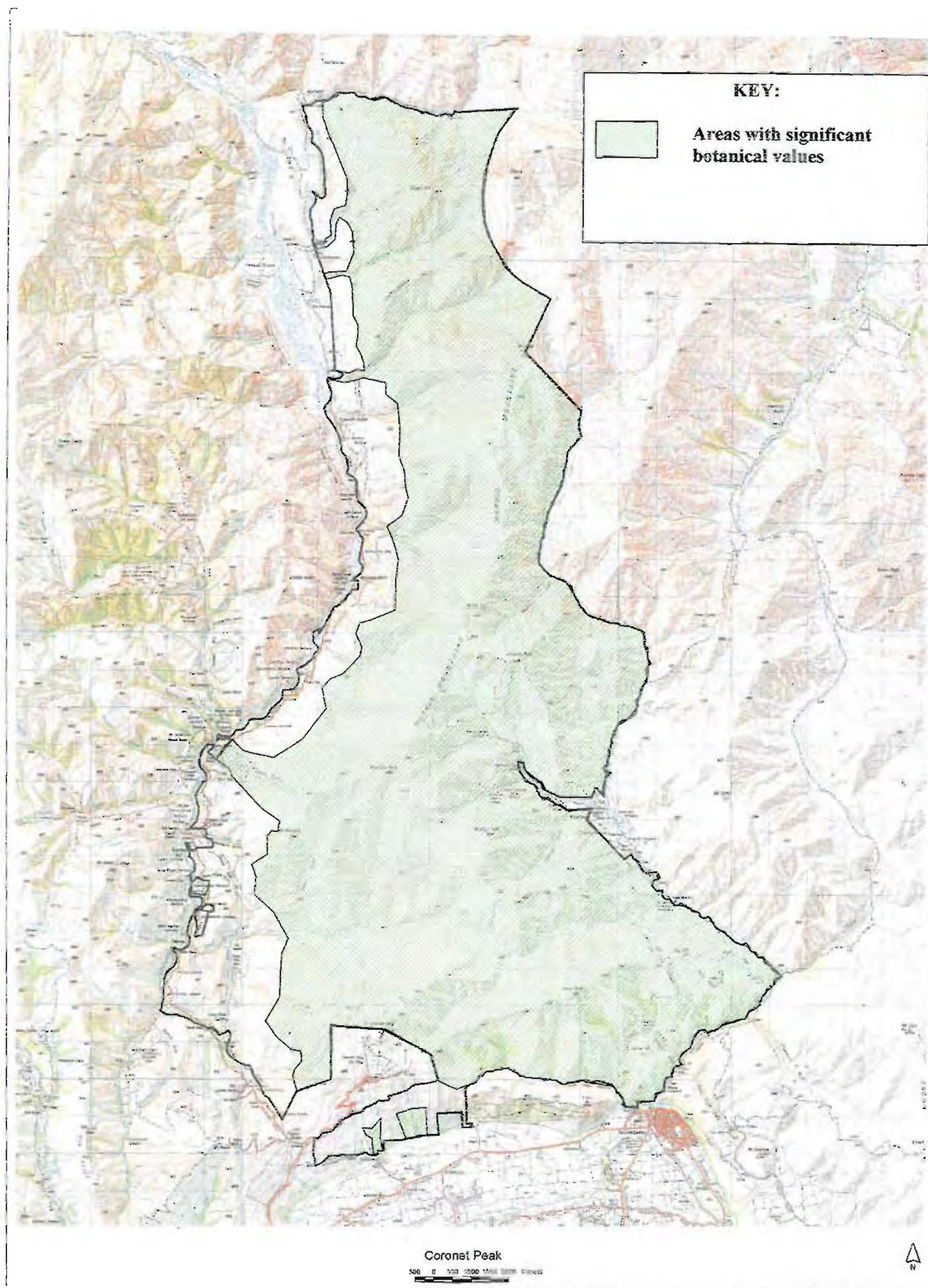


MAP 4.2.2: CORONET PEAK PASTORAL LEASE- LANDSCAPE UNITS AND SIGNIFICANT LANDSCAPE VALUES



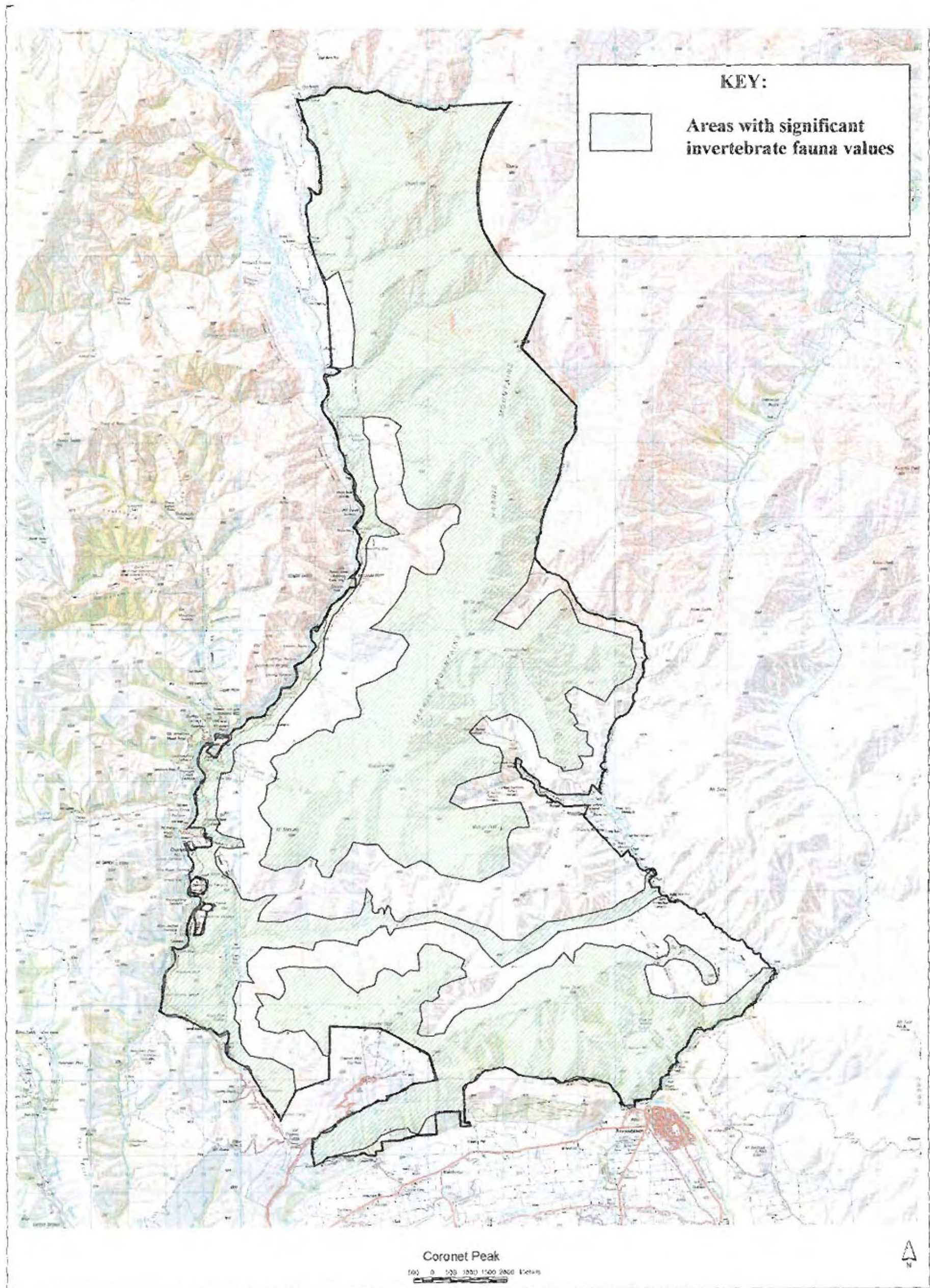


# MAP 4.2.3: CORONET PEAK PASTORAL LEASE- SIGNIFICANT BOTANICAL VALUES

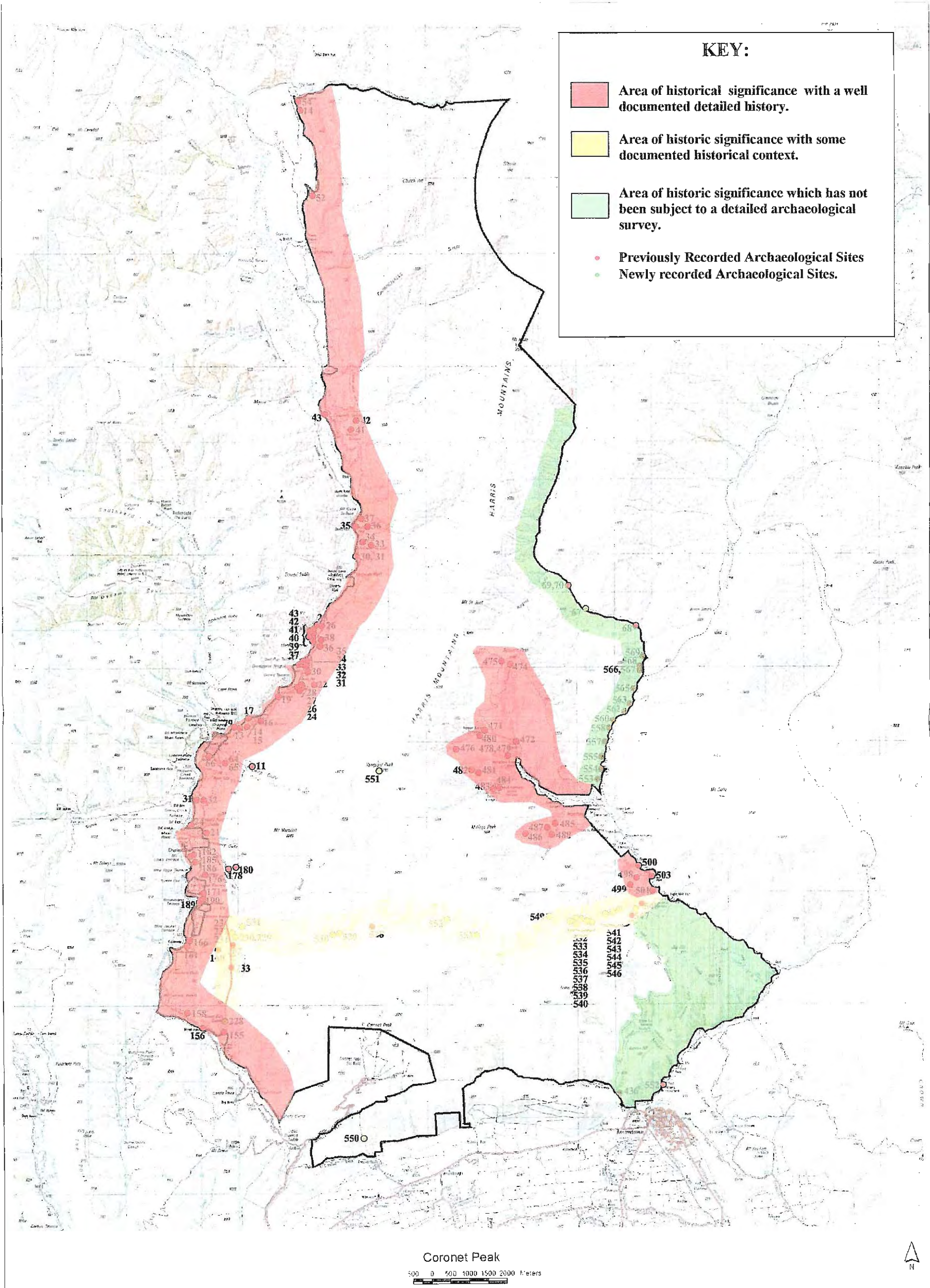




# MAP 4.2.4 CORONET PEAK PASTORAL LEASE: SIGNIFICANT INVERTEBRATE FAUNA VALUES







MAP 4.2.5: CORONET PEAK PASTORAL LEASE- SIGNIFICANT HISTORIC VALUES



# MAP 4.2.6: CORONET PEAK PASTORAL LEASE – SIGNIFICANT RECREATION VALUES

